



# FOREST RECREATION



# WORKING PLAN:



# DWELLINGUP DIVISION



D W E L L I N G U P   D I V I S I O N

R E C R E A T I O N   W O R K I N G   P L A N

March 1985

1. RECREATION RESOURCE MANAGEMENT OBJECTIVE, POLICIES & STRATEGIES

1.1 INTRODUCTION

The MANAGEMENT OBJECTIVE is the goal of recreation management. It is a broad statement of what the Division expects to achieve within known legal, economic and social constraints. It is aligned with Departmental and Regional objectives.

POLICY is the course of action to be taken to achieve the objective and specifies broadly what will be done by the Division.

A STRATEGY explains how the course of action, specified as policy, is intended to be achieved.

1.2 MANAGEMENT OBJECTIVE AND POLICIES

To provide for the planned development and maintenance of recreation opportunities on State Forest in Dwelling-up Division having regard to the best available information concerning community needs, resource capability and constraints to management.

1.2.1 General

1. Separate incompatible uses.
2. Provide facilities and sites for recreational pursuits as the demand is foreseen, locating these facilities and associated services so as to avoid degradation of the environment and protect recreation attributes of the locality.
3. Increase availability and diversity of recreational opportunities.
4. Redesign and develop existing areas and facilities to resolve existing conflicts and facilitate increased use.
5. Provide for and control camping and off-road vehicle activity.
6. Expand visitor education and interpretation programmes.
7. Liaise with other management authorities, through the Regional Superintendent, to jointly determine how recreational use can best be accommodated in the Division.
8. Maintain all Departmental recreation areas and facilities under Dwellingup Division control in a clean, workable and safe condition.

1.2.2 Specific Management Units

1. Manage the Darling Escarpment for non-motorised activities including nature study, bushwalking, picnickers, scenic viewing and rock climbing in selected locations.

2. Manage the Dissected River Valleys to avoid user conflicts and minimise environmental degradation.
3. Manage the lateritic Uplands to provide for a wide range of recreational pursuits and so as to present the concept of the "working forest".
4. Manage the Monadknocks for non-motorised low intensity activities which are compatible with flora and fauna conservation.
5. Manage the Eastern Woodlands intensively for recreation providing areas which offer a wide range of activities which can be undertaken at individual sites.
6. Manage Reservoirs in accordance with guidelines as communicated by the water authorities.
7. Manage Plantations for a wide variety of recreational pursuits and modified by the fire risk.
8. Manage Highways for forest education and interpretation giving close attention to conduct of all forest lands use activities.

### 1.3 STRATEGIES

#### 1.3.1 General

1. Resolve conflict between incompatible users through zoning to minimise both environmental and social conflicts.
2. Design and develop new and existing sites and facilities in accordance with plans approved by the Superintendent Northern Region and Recreation Specialist.
3. Consider all factors in site planning according to the Site Planning Checklist and specifications contained in the Recreation Operations Manual.
4. Design and mount maintenance programmes, including periodic inspection, and use of site Maintenance Checklists.
5. Tailor site maintenance schedules to cope with periods of heavy use.
6. Utilise Extension Services expertise in design construction and maintenance of all facilities and sites.
7. On appropriate sites provide for handicapped and invalid persons designing for comfortable and easy access to nominated areas which will be advertised and signposted.
8. Prepare maps, guides and directories to ensure forest visitors are fully informed about the recreation opportunities available to them.
9. Judicious use of signposting will accompany all developments using standards for sign design and construction prepared by Extension Services.

10. Contact with, and supply of information to, school and special interest groups will be actively maintained in the form of talks, displays and field trips.
11. Motorised recreation activities may only proceed following detailed hygiene planning.
12. Recreation planning within mining influence zones will have regard for
  - . public safety
  - . post mining public access needs
  - . identification and protection of recreational, historical and educational attractions prior to mining, and
  - . recreational use after rehabilitation.
13. Identify areas where tent camping facilities could be located and provide proper management of approved camping sites according to Extension Services advice and within guidelines contained in the Health Act 1911-1979 and Caravans and Camping Act.
14. Trial and trail bike activity will be confined to suitable areas selected so as to minimise damage to the environment and reduce conflict with other forest users.
15. Control of off-road vehicle activity, outside areas zoned specially for that use, will proceed via powers and guidelines contained in the Control of off-road Vehicles Act.
16. Patrols will be organised and conducted on weekends and holiday to foster positive contact with the recreating public and to disseminate explanatory information and answer enquiries.
17. Relevant conditions of the Bushfires Act will be enforced stringently at all recreation sites.
18. Staff will encourage organised recreation groups to use the forest and will maintain liaison with them.

#### 1.3.2 Specific Management Units

##### 1. Darling Escarpment

- (a) Restrict vehicular access.
- (b) Provide carefully designed picnic areas, look-outs and trail systems.
- (c) Provide selected areas for rock climbing zoned so as not to conflict with the more passive uses of this unit.
- (d) Produce flora, fauna and scenic guides to enhance forest visitors' awareness of this unit.

X 2. DISSECTED RIVER VALLEYS

- (a) Tightly control vehicular access.
- (b) Close existing tracks and access points where there are resulting in high levels of site disturbance.
- (c) Upgrade existing sites and provide new facilities designed to sustain high levels of recreation use.
- (d) Provide designated sites for tent and caravan camping. Such areas will include provision of toilet facilities.
- (e) Actively discourage all forms of off-road vehicle activity through sign-posting, patrols and provision of suitable areas in other management units.
- (f) Design walk trails and information displays which will centre on developed picnic sites.
- (g) Provide guides to the fauna, flora, landscape and land use conflicts of river valley systems.

3.

LATERITIC UPLANDS

- (a) Intensively manage and develop areas for a range of recreational activities including picnicking, bush-walking, back-pack camping and sight seeing subject to the approval of the relevant water supply authorities.
- (b) Develop a series of demonstration forest tours based on existing land use activities and including detailed hygiene planning.
- (c) Provide detailed guides to flora, fauna, landscape and land use conflicts characteristic of the uplands management unit.

4.

MONADKNOCKS

- (a) Exclude all road construction activity so as to discourage vehicular use and to minimise the problems of erosion and dieback spread.
- (b) Facilitate access on foot by providing recreation facilities at the base of the Monadnock chain.
- (c) Provide interpretative material at all sites.
- (d) Produce written guides to flora, fauna and landscape characteristics of this unit.

5.

EASTERN WOODLANDS

- (a) Develop sites suitable for tent camping, along with a network of interpretative trails and scenic drives.
- (b) Allocate specific areas for the use of trail/trial bikes and organised motor rallies.
- (c) Encourage public awareness of the eastern woodland through provision of published information and use of signs and map directories.

6.

#### RESERVOIRS

- (a) Work closely with the Metropolitan Water Authority, Public Works Department and Public Health Department in the planning of all forest recreation areas and facilities within active catchments.

7.

#### PLANTATIONS

- (a) Develop rating systems relating fire risk with recreation potential.
- (b) Allow for recreation uses where fire risk is low or buffer protection provided.
- (c) Initiate an effective public education and information programme which explains plantation management.

8.

#### HIGHWAYS

- (a) Ensure all activities involving removal of forest produce including gravel and rehabilitation of degraded areas are carried out according to landscape design and management guidelines provided by Extension Services.
- (b) Establish a comprehensive visitor information system which includes:
  - forest information bays
  - additional interpretative facilities at existing sites
  - co-ordinated approach to design and use of signs

## 2. RECREATION RESOURCE AND ITS USE

### 2.1 LOCATION AND DESCRIPTION

This plan includes all of Dwellingup Division and part of Harvey Division adjacent to the Murray River.

This area covers approximately 170000 ha. of forest and is situated between 60 km. and 120km. South South East of the Perth metropolitan area (Figure 1). Mandurah, a popular seaside resort, is 40 km. to the North West of Dwellingup.

The Western boundary of the Division is an irregular line running North-South along the Darling Scarp and adjoining private property. To the East, the Division borders large tracts of privately owned forest and smaller farm holdings. Several isolated forest blocks - Gyngoorda, Wandering, Marradong, Saddleback and Quindanning - are situated a few kilometres to the East of the main Divisional block. The Northern and Southern boundaries are the Jarrahdale and Harvey Divisions respectively.

Topography over most of the Division East of the Scarp is moderately undulating with occasional forested peaks - monadknocks. The dominant forest type is a mixture of jarrah (Eucalyptus marginata) and marri (Eucalyptus calophylla) which grades into more open wandoo (Eucalyptus wandoo) woodland further East.

Divisional Headquarters are located at Dwellingup, population 500, a historic timber town that was once a major centre for a number of satellite milltowns, several of which were destroyed in the 1961 fire.

The sealed Pinjarra-Williams Road passes through the town and permits easy access from Pinjarra to the West and Boddington to the East. A comprehensive forest road network exists, allowing access to all sections of the Division.

### 2.2 RECREATION MANAGEMENT UNITS

A variety of environments for recreation are offered by the Division. These range from steep, rocky slopes of the Darling Escarpment through to open Eastern woodlands. For the purposes of objective capability planning the plan area has been subdivided into recreation management units which are distinct and mappable.

5 "natural" and 3 "man-made" units have been identified within the plan area. Man-made units relate to major developments of regional importance such as highways and reservoirs. Natural units have been defined by the vegetation, landform and soil studies of Haxel (1975).



## 2.2.1 Natural Units

### 1. Darling Escarpment

Consists of the Western edge of the Darling Plateau which runs North-South and rises approximately 300 m. above the coastal plain.

Landform is characterised by steep slopes with little, if any, laterite and with the surface occupied mainly by exposed weathered or unweathered materials. Vegetation characteristically includes a large variety of flora with several features evident - dominance of wandoo, admixture of marri, occurrence of rare Eucalyptus laeliae and variety of both the floristic and structural composition of the vegetation.

### 2. Dissected River Valleys

Include river valleys slopes and floors running generally East-West which are steeply dissected where they meet the Darling Escarpment.

Land form surfaces represented include

- (a) Helena unit occupies deepest entrenchments; may have 200 m. relief and slopes of 30°; red and yellow earth dominate but also significant areas of red and yellow duplex soils overlying a rocky bed.
- (b) Murray unit occurs upstream from Helena unit; has relief of 90 - 120 m., slopes generally not greater than 15° and smoothly mantled by detritus from laterites and country rock; soils form a more uniform pattern consisting of same types as Helena surface.

Vegetation complexes characteristic of this unit include

- (a) Helena complex, medium - high rainfall; vegetation varies with soil depth; ranges from open forest jarrah - marri on lower slopes and valley floors to heath or shallow soils on upper slopes to herblands and lithic complex on granite rocks.
- (b) Murray complex, medium-high rainfall; vegetation dominated by open forest jarrah-marri on valley slopes and open forest jarrah-marri-blackbutt on lower slopes; along streams is fringing woodland of flooded gum Melaleuca raphiophylla.

*Eucalyptus ruchi's*

### 3. Lateritic Uplands

This unit is broadly undulating forested uplands of jarrah-marri which form the South Western portion of the Darling Plateau.

Landforms include

- (a) Dwellingup unit; uplands with elevation of 250-300m; is dominated by duricrust gravels and sands.
- (b) Yarragil unit; minor valleys, slopes and floors; narrow flat swampy floors with orange earth; smooth slopes with gravelly sands.

Vegetation complexes characteristic of this unit include:

- (a) Dwellingup-Hester complex, high rainfall - Central and South; open forest jarrah-marri localised patches tall open forest restricted in occurrence.
- (b) Yarragil complex (minimum development swamps) medium-high rainfall; mixture open forest jarrah-marri; admixtures of blackbutt and bullich.
- (c) Yarragil complex (maximum development swamps), medium-high rainfall; differs from previous complex in large areas of swamps; open forest jarrah-marri; admixture blackbutt; well defined second storey of *Banksia* on sandy soils; low, open woodland *Melaleuca preissiana* - *Banksia littoralis* on moist valley floors.
- (d) Swamp complex; vegetation range from low open woodland *M.preissiana* - *B.Littoralis* to sedge-lands on wetter soils.

### 5. Monadknocks

Chain of residual granite outcrops rising several hundred metres above the Darling Plateau.

Landform surface represented is the Cooke unit; mainly mantled by laterite but with some rock outcrop.

Vegetation complex represented in this unit is the Cooke Complex; vegetation varies with widely varying soil depth; ranges from lithic complex through herbfields, through heath, through low open forest of rock sheoak on shallow soils in the low rainfall areas; to woodlands of wandoo - marri and open forest of jarrah-marri on deeper soils.

### 6. Eastern Woodlands

Form a combination of broad valleys and low undulating divides.

Surfaces contained within this unit include

- (a) Dwellingup unit (described under laterite uplands).
- (b) Pindalup unit; minor valleys, slopes and floors; broader floors (cf Yarragil) and evidence of more stripping of the weathered mantle; slopes often show erosion scars, rock outcrop, may be discontinuous breakaways; lower slopes and floors dominated by duplex soils.
- (c) Coolakin unit; minor valleys; slopes extensively stripped, dominated by duplex soils but have much rock outcrop and shallow soils over rock; commonly lateritic breakaway around the perimeter.
- (d) Yalanbee unit; similar to Dwellingup unit but with lesser extent of fine gravels.
- (c) Michibin unit; valley slopes, minor relief with steep slopes and rock outcrop.

Vegetation complexes represented include:-

- (a) Dwellingup, Yalanbee, Hester complex, low-medium rainfall; open forest jarrah-marri.
- (b) Yalanbee, Dwellingup complex, low rainfall; mixture open forest jarrah-marri and woodland wandoo-marri.
- (c) Yalanbee complex, low rainfall; mainly supports woodland of wandoo-powderbark wandoo; overlaps with adjacent complexes by minor occurrences of woodland wandoo-marri and open forest jarrah-marri.
- (d) Pindalup, Yarragil complex, low-medium rainfall; mainly open woodland wandoo; some admixture marri, blackbutt and jarrah; some open forest jarrah-marri.
- (e) Coolakin complex, low rainfall; woodland wandoo; mixture jarrah, marri, blackbutt.
- (f) Michibin complex; woodland wandoo; York gum only in isolated patches mixed with wandoo.

### 2.2.2 Man-Made Units

#### 1. Reservoirs.

Major valley systems which have been impounded for domestic and industrial water supply.

#### 2. Plantations.

Isolated areas of forest land planted with Pinus pinaster and Pinus radiata mixing rehabilitation and arboreta.

#### 3. Highways.

Important regional roads and highways which traverse the plan area in State Forest and which serve as either existing or potential major public access routes.

### 2.3 MANAGEMENT ZONES

Recreation management units have been sub- } X

X 2.3 MANAGEMENT ZONES.

Recreation management units have been subdivided into management zones. Criteria used for subdivision of each unit are given below and were chosen to be generally compatible with the Hardwood Operations Control System and the Plantations Operation Control System.

Later in this Plan these zones will be grouped into Priority Zones.

1. Darling Escarpment  
Zoned by blocks
  - 1.1 Whittaker
  - 1.2 Turner
  - 1.3 Marrinup
  
2. Dissected River Valleys  
Zoned by stream name. Murray Valley further subdivided by block.
  - 2.1 North Dandalup R.
  - 2.2 Whittaker Mill
  - 2.3 Little Dandalup Ck.
  - 2.4 South Dandalup R.
  - 2.5 Oakley Brook
  - 2.6 Marrinup Brook
  - 2.7 Murray Valley - Teesdale/Park (West)
  - 2.8 Murray Valley - Park (East)
  - 2.9 Murray Valley - Holmes
  - 2.10 Murray Valley - Holyoake
  - 2.11 Murray Valley - Plavins
  - 2.12 Murray Valley - Nanga
  - 2.13 Murray Valley - Yarragil, Young, Howse, Pascoe
  - 2.14 Murray Valley - Keats, Federal, Tumlo, Chalk
  - 2.15 Murray Valley - Bell
  
3. Lateritic Uplands  
Zoned by block.
  - 3.1 Torrens, Wilson, Urbrae
  - 3.2 Whittaker
  - 3.3 Turner, Marrinup
  - 3.4 Teesdale
  - 3.5 Park
  - 3.6 O' Neill
  - 3.7 White, Scott, Banksiadale

- 3.8 Holyoake
- 3.9 Holmes
- 3.10 Plavins
- 3.11 Boonerring, Duncan, Cameron
- 3.12 Kennedy
- 3.13 Inglehope, Pindalup, Amphion
- 3.14 Wells, Hedges, Bomballa
- 3.15 Curara, Yarragil, Young, Hakea, Howse
- 3.16 Taree
- 3.17 Pascoe
- 4. Monadknocks  
Zoned by block
  - 4.1 Boonerring
  - 4.2 Duncan
  - 4.3 Gyngoorda
  - 4.4 Wells
  - 4.5 Saddleback
  - 4.6 George
- 5. Eastern Woodlands  
Zoned by block
  - 5.1 Boonerring
  - 5.2 Duncan, Cameron, Wells, Hedge, Bomballa
  - 5.3 Gyngoorda
  - 5.4 Wandering
  - 5.5 Marradong
  - 5.6 George, Hakea, Taree
  - 5.7 Saddleback, Quindanning
- 6. Reservoirs  
Zoned by dam name
  - 6.1 North Dandalup pipehead
  - 6.2 Banksiadale Dam
  - 6.3 South Dandalup Dam
  - 6.4 Oakley Dam
- 7. Plantations  
Zoned by plantation name, mine or arboreta
  - 7.1 Murray
  - 7.2 Turner
  - 7.3 Mine Rehabilitation
  - 7.4 Arboreta

8. Highways  
Zoned by road
- 8.1 Pinjarra - Williams Rd
  - 8.2 Del Park Rd
  - 8.3 Nanga Rd
  - 8.4 South West Highway
  - 8.5 River Rd
  - 8.6 Park Rd
  - 8.7 Murray Valley Rd
  - 8.8 Waroona Rd
  - 8.9 Stawell Rd
  - 8.10 North East Rd
  - 8.11 Albany Hwy
  - 8.12 North Rd
  - 8.13 Yarragil Form
  - 8.14 Murray Rd
  - 8.15 North Spur Road
  - 8.16 Scarp Rd

2.4 INVENTORY OF FOREST RECREATION SITES/FACILITIES/  
DEVELOPMENTS

MANAGEMENT UNIT / ZONE	SITE NAME	SITE TYPE	FEATURES	ACCESS	SIGNS	PARKING	TOILET SETS	PICNIC UNITS	CAMP SITES	WALK TRAILS
1. LARLING ESCARPMENT										
1.1 WHITTAKER.	GOLD MINE HILL	PICNIC, LOOKOUT	HISTORIC, SCENIC ROCK OUTCROPS	5TH WEST HWY WHITTAKER RD SCARP RD	1 APPROACH 1 SITE	5	-	3	-	-
1.2. TURNER.	-	-	-	-	-	-	-	-	-	-
1.3 MARRINUP	OARLEY DAM	PICNIC, LOOKOUT	HISTORIC, SCENIC ROCK OUTCROPS DAM + BRICK	ADRIAN RD SCARP RD	1 SITE	10	-	5	-	BIGBULMUN TRACK
2. DISSECTED RIVER VALLEY										
2.1 NORTH DANDALUP R.	-	-	-	-	-	-	-	-	-	BIGBULMUN TRACK
2.2 WHITTAKER MILL	-	-	-	-	-	-	-	-	-	BIGBULMUN TRACK
2.3 LITTLE DANDALUP CK.	-	-	-	-	-	-	-	-	-	BIGBULMUN TRACK
2.4 SOUTH DANDALUP R.	-	-	-	-	-	-	-	-	-	BIGBULMUN TRACK
2.5 OAKLEY BROOK	-	-	-	-	-	-	-	-	-	BIGBULMUN TRACK
2.6 MARRINUP BROOK	-	-	-	-	-	-	-	-	-	BIGBULMUN TRACK
2.7 TEESDALE / PARK	SCARP LOOKOUT	PICNIC, LOOKOUT	SCENIC, STEEP, VEGETATION	SCARP RD.	1 SITE	10	-	4	-	BIGBULMUN TRACK
	SCARP POOL	PICNIC, INFORMAL CAMPING	SCENIC, WATER VEGETATION	SCARP RD	-	15	1	4	-	BIGBULMUN TRACK
2.8 PARK	BADEN POWELL	PICNIC, INFORMAL CAMPING	SCENIC, WATER VEGETATION	MANGA RD PARK RD	2 SITE	20	1	4	-	-
2.9 HOLMES	-	-	-	-	-	-	-	-	-	BIGBULMUN TRACK
2.10 HOLYOAKE	-	-	-	-	-	-	-	-	-	-
2.11. PLAINS	ISLAND POOL	PICNIC, INFORMAL CAMPING	SCENIC, WATER VEGETATION	RIVER RD	1 SITE	20	1	6	-	-





MANAGEMENT UNIT / ZONE	SITE NAME	SITE TYPE	FEATURES	ACCESS	SIGNS	PARKING	TOILET SETS	PICNIC UNITS	CAMPSTES	WALK TRAILS.
3.13 INGLEHOPE, INDAWU AMPHION	INGLEHOPE ALLOPETHU	PICNIC, EDUCATIONAL	ALLOPETHU, JARRAH FOREST	INSTARIA - WILLIAMS RD	1 SITE	20	-	2	-	2
3.14 WELLS HEDGES BONGALA	-									-
3.15 CURRA, YARRA GIL YOUNG, MAKEA HOMER	-									-
3.16 TREE	-									-
3.17 PASCOE	-									-
4, MONADKMOCKI.										
4.1 BOONERLING	-									-
4.2 DUNLAN	-									-
4.3 GYNGOORNA	-									-
4.4 WELLS	-									-
4.5 SADDLEBACK	-									-
4.6 GEORGE	-									-
5. EASTERN WOODLANDS										
5.1 BOONERLING	-									-
5.2 DUNLAN, CAMERON, WELLS, HEDGES BONGALA	-									-
5.3 GYNGOORNA	-									-



2.5 FOREST RECREATION USE PATTERNS

2.5.1 Level of Use

Broadscale recreation planning requires detailed analysis of public use of the forest recreation resource.

Data on use patterns is available through forest visitor surveys carried out in 1972 and 1978. Additional information was obtained from a survey of local knowledge.

The estimated 1978 level of visitor use was 65000 visitor days per annum. Using a growth estimate of 7% annually, current visitor usage is assessed at 91000 visitor days per year.

By the year 2000 visitor days would number 248000 each year.

However these estimates do not take account of the level of use occurring in those areas controlled by other authorities e.g. South Dandalup Dam. Nor do they give an estimate of usage by recreation zones.

Local experience indicate 90% of visitor days are spent in zones where water is the main feature i.e. Murray River Valley, South Dandalup Dam, Oakley Dam. Usage estimates also fail to reflect undetected uses such as marron fishing.

2.5.2 Visitor Activities

Data on type and length of visit by recreationists to Dwellingup Division is indicated on Table 2.5.1. Note that one-day visits and overnight visits have equal weighting in this Division in contrast to both the Northern Region and State Forest as a whole.

Table 2.5.1 TYPE OF VISIT  
(percentage breakdown of responses)  
Source 1978 FVS.

Type of Visit	Administrative Unit		
	Dwellingup	Northern Region	State Forest
One day Trip	50	86	68
Overnight camping - (undeveloped)	35	8	13
Overnight camping - developed	8	3	6
Passing through on journey	2	3	8

Activities in which recreationists engage in during their stay in State Forest indicate preferences for major recreation resource features and zones, availability of facilities and existence of constraint on activity in certain areas.

Information detailed in Table 2.5.2 attests to the predominance of water-based, destination-orientated activities.

Table 2.5.2 VISITOR PARTICIPATION IN RECREATIONAL ACTIVITIES

(i) Reasons for visiting State Forest (percentage breakdown of responses)  
(ii) Activities which recreationists were observed engaged in (percentage of groups)  
Source 1978 FVS

(i) Reasons for Visit (ii) Activities observed	ADMINISTRATIVE UNIT		
	Dwellingup	Northern Region	State Forest
Destination-orientated activities			
Picnic/Barbecue	(i) 35 (ii) 42	(i) 57 (ii) 65	(i) 43 (ii) 51
Camping	(i) 1* (ii) 27	(ii) 7	(ii) 9
Solitude/Retreat	(i) 20	(i) 8	(i) 9
Swimming	(i) 5 (ii) 6	(i) 1 (ii) 1	(i) 2 (ii) 3
Marroning	(i) 4 (ii) 2	(i) 1 (ii) 1	(i) 2 (ii) 1
Relaxing/resting	(ii) 1	(ii) 1	(ii) 1
Travel-orientated activities			
Sightseeing/touring	(i) 7 (ii) 6	(i) 6 (ii) 6	(i) 12 (ii) 14
Boating/Canoeing	(i) 8 (ii) 5	(i) 2 (ii) 1	(i) 3 (ii) 2
Bushwalking	(i) 4 (ii) 1	(i) 3 (ii) 2	(i) 3 (ii) 3
Trail/trail bike riding	(i) 2 (ii) 1	(i) 2 (ii) 3	(i) 2 (ii) 2
Viewing flora & fauna	(i) 1 (ii) -	(i) 4 (ii) 1	(i) 4 (ii) 1

Other recreation activities utilizing forest areas but undetected by the 1978 survey are listed below:

1. Collecting firewood - increases each year with increasing popularity of wood for fuel.
2. Car rallies - (a) Large organized - 2 - 3 per year.  
(b) Small social club type - up to 5 per year.
3. Trail and enduro motor bike events - at least 2 per year.
4. School groups - up to 10 per year.
5. Army exercises - at least 1 request per year.
6. Hotham Valley Tourist Railway - at least 25 weekend trips to Dwellingup during winter/spring carrying 600 people per trip.

### 2.5.3 Future Use by Zones

Demands for future recreational use of State Forest in the Division is unknown. Growth estimates used by the Forests Department and System 6 enquiry will only be realised or exceeded depending on changes in the following factors as addressed by the Recreation Framework Plan

- (i) Population
- (ii) Technological and social factors leading to new patterns of work and leisure.
- (iii) Per capita disposable income levels and expenditure on leisure goods and services.
- (iv) Public interest/awareness of natural environments.
- (v) Recreation opportunities in non-forest areas and competing land use pressures.

Forest Department analysis of recreation demand indicates that a substantial increase in the level and diversity of recreation activity in the Division will occur.

Future usage by zones is likewise difficult to predict. It is likely that usage will continue to increase in order of importance for the following management zones.

1. Murray Valley - Teesdale/Park to Plavins/Nanga      Sightseeing, water-based activities, overnight camping, picnicking, bushwalking, usage by organised groups.

- |   |   |
|---|---|
| 2. Murray Valley - Yarragil/Keats to Pascoe/Chalk   | 4x4 touring and camping, water based activities. Less demand pressure than the before-mentioned Murray Valley Zone. |
| 4. Lateritic Uplands - Holyoake   | Increasing heavy usage of Dwellingup Railway Station by HVR patrons for picnicking and barbecues.                   |
| 5. South Dandalup Dam   | Sightseers, picnicking with progressive upgrading of Del Park Rd. Marroning (illegal).                              |
| 6. Highways - Pinjarra-Williams Rd, Del Park Rd, Nanga Rd, River Rd, Park Rd, Murray Valley Rd, Waroona Rd, Scarp Rd. | Access to Murray Valley zones.  |
| 7. Highways - Del Park Rd, Pinjarra-Williams Rd, Scarp Rd, North Spur Rd.   | Access to Darling Escarpment zones.   |
| 8. Highways - Pinjarra - Dwellingup Railway Line  | Hotham Valley Tourist Railway access to Dwellingup Station.   |
| 9. Murray Plantation  | Camping, sightseeing in association with river features.  |
| 10. Lateritic Uplands - Whittaker, Turner, Marrinup   | Bushwalking, picnicking, sightseeing, firewood collection.  |
| 11. Lateritic Uplands - Teesdale  | Trail/trial bike events, bushwalking.   |
| 12. Albany Highway  | Increased use for stopover by cars passing throughs..   |
| 13. Lateritic Uplands - Park  | Trail/trial bike events, sightseeing.   |
| 14. Lateritic uplands - Holmes  | Bushwalking, sightseeing.   |
| 15. Lateritic Uplands - Torrens, Urbrae   | Pig hunting, some sight seeing and firewood gathering.  |
| 16. Lateritic Uplands - Quarantined Zones.  | Pig hunting, access to marron resource.   |
| 17. Hamel Plantation and Nursery.   | Forest Park and Arboreta.   |

X 2.6 COMPARISON OF DEMAND AND SUPPLY

In order to adequately equate recreation demand (current and future) with supply of recreation opportunities and facilities accurate demand data is needed. In the previous section of

this plan mention was made of the lack of accurate and detailed demand information. Hence, consideration of demand and supply in this part of the working plan will be confined to those zones where conflict can be detected and under-supply is perceived.

#### 2.6.1 Murray Valley - Teesdale/Park to Plavins/Nanga.

##### (a) Picnic/BBQ

Facilities have been supplied at five managed locations.

Carrying capacity of all sites is exceeded on peak use days and has resulted in vandalism to site furniture, conflict between bona fide one-day visitors and overnight campers for space and facilities and environmental damage.

Toilet facilities are very heavily used at all these sites as is supplied firewood.

The sites listed in order of demand pressure are Scarp Pool, Baden Powell Water Spout, Island Pool and Nanga. and Scarp Pool Lookout.

##### (b) Overnight Camping

No managed camping areas have been supplied by the Department for use by the recreating public. However, as previously discussed, there is a very high demand for camping sites, parking areas, suitable access (both to the zone and to the river itself), rubbish collection, toilet facilities and cooking facilities.

This demand has been satisfied in part by laissez-faire creation of small campsites along the river bank resulting in a moderate level of river bank degradation. The remainder of campsite demand is provided by managed picnic sites with resultant conflict with one-day visitors and site crowding. It is perceived that approximately half of the camping demand can be catered for in relatively large (up to 20 camps) managed camping sites with facilities. However an equal number prefer "bush" camping in isolation and solitude.

Up to 200 campsites can be occupied on peak use days in December and January and during Easter.

Areas of concern include conflict with one-day visitors, aspect of personal hygiene, the spread-out nature of campsite wild removal of refuse, fire control problems, environmental degradation and road safety.

##### (c) Water-based activities.

Swimming, canoeing and marroning are not actively catered for through provision of sites and facilities. Demand for these activities

is high and is related to camping and picnicking sites throughout these zones.

The availability of suitable pools for swimming could be a limiting factor in the future.

Areas of concern include provision of suitable launching sites for canoes, safety aspects of swimmers and canoeists using the same zone and safety aspects of using the river for swimming and diving (logs, rocks, broken bottles, etc.)

Care needs to be taken to maintain the suitability of the resource i.e. Murray River.

(d) Sightseeing/Pleasure driving.

A two-way scenic drive of 35 km. was constructed in 1973 using River, Rd, Yarragil Form, Murray Rd and Pinjarra-Williams Rd. However, it has since deteriorated through lack of maintenance and adequate written information and publicity.

This route offers scenic views of the river and a variety of vegetation types and land-forms. Demand for this form of leisure activity is significant and currently supply of formal self-guiding tours is lacking.

Aspects of concern involve road safety, dieback hygiene and written information.

(e) Organised groups.

This zone is being increasingly used by organised groups as a suitable location for various activities - camping, survival courses, army exercises. To date, these groups have set up base camps at managed sites, mostly at Nanga and Scarp Pool. This can result in conflict with other user groups, especially those seeking relaxation and solitude. It appears that some degree of segregation could be used to ameliorate these effects.

(f) Trail Bikes.

Some of the recreating public do use trail bikes on State Forest whilst camping, in, or visiting, these zones. No sites or facilities have been provided by the Department and this activity is not managed for in this zone. Complaints have been received concerning this activity from neighbouring campers. It appears necessary to provide areas for this informal trail bike activity in areas adjacent to this area and institute active discouragement of trail bike use in the valley zones.

(g) Forest Information and Education.

No provision for education of the visiting



public, or supply of information, has been made to date. The demand for self-educating activities in relation to forestmanagement and ecology and land use issues can be expected to be high. Hence, inclusion of information boards, walk-trails and interpretation material at all managed sites would be worthwhile.

(h) Bushwalking.

Bushwalkers using this zone have been provided with the Murray Circuit of the Bibbulmun Track. This appears to be coping adequately with demand. However, conflict is occurring between walkers and destination-oriented users along the Murray River fireline in Park Block. Here, litter and destruction of vegetation and clear evidence of vehicular traffic detract from the walking experience. Action is needed to remove these influences from this area.

(i) Other.

2.6.2 Murray Valley - Yarragil/Keats to Pascoe/Chalk

(a) Picnic/BBQ

Demand for sites catering for one-day visits is much lower in this zone when compared with zones considered in section 2.6.1.

However, with increasing and continuing heavy usage of zones in the Western sections of the Murray Valley future use of this area for managed picnic sites is warranted. Some problems to be expected if sites are established in this area are increase of area for intensive fire detection, increase in maintenance costs due to distance from Dwellingup and Harvey and increase in costs of patrols.

(b) Overnight Camping.

A large demand exists for isolated camping sites in these zones. Along the Murray River Fireline (Dwellingup Division) 4WD touring and camping is practised. In Harvey Division, access by normal motor vehicles is afforded by North Junction Form, South Junction Form, Driver Road, Muddy Landing Road, Calana Form and a new road through to Tumlo Plantation. There has been no active management for camping in this area. Supply of sites is offered by uncontrolled or wild camping.

Aspects for concern echo those discussed in section 2.6.1 part (b).

Any active management in these areas will incur cost penalties due to remoteness.

(c) Water based activities.

Many water-based activities are associated with

overnight camping in these zones because of their remoteness. It is estimated that supply of the resource (Murray River) has not been exceeded by demand because of the lower levels of camping compared with zones to the West. However environmental effects at specific sites need to be monitored and managed to preserve the resource for future users.

(d) Sightseeing/Pleasure driving.

No formal tours have been constructed in these zones. 4WD vehicles use the Murray River fireline for bush touring and no development is warranted other than a check of road drainage. In Harvey Division the roads adjacent to the Murray River have a high suitability for scenic driving, if adequately upgraded. Increases in demand for this leisure activity are forecast for the future. Hence, provision of a self guiding tour using these roads in tandem with construction of formal picnic areas and managed campsites can be a future option.

(e) Bushwalking.

These zones could also provide satisfying walking experience in the future as long as planning through use zoning proceeds and the walking experience is maintained or heightened.

2.6.3 Lateritic Uplands - Holyoake (Dwellingup Railway Station).

(a) Picnic/BBQ.

Facilities are provided by the Hotham Valley Tourist Railway and the Forests Department at the Dwellingup Railway Station to cater for an estimated peak usage of 600 people each weekend for 25 weeks in Autumn, Winter and Spring. Demand for tables, BBQ's and bins is satisfied by current facilities. However, some effort needs to be made to influence HVTR to improve the standard of their site furniture to a level commensurate with the adjacent Department site. Growth in demand can also be satisfied by an increase in facilities at the Department site.

(b) Walking Trails.

Many patrons of the railway find they have little to do after finishing lunch, other than a walk through Dwellingup. Hence, provision of short interpretative walk trails taking people from the station to the forest surrounding Dwellingup could be warranted.

(c) Visitor Education and Information.

No provision is currently made for visitor information services or self-education. Demand has been seen as potentially high for those types of ancillary services. Information boards, guides, directories and pamphlets should be available.

(d) Sight seeing/Pleasure driving.

Dwellingup is an excellent location as a start for self-guiding tours. There are many scenic and historic sites and other points of interest. Currently, supply of scenic drives is zero. However, demand is high as evidenced by the number of visitors to this office requiring information. Consequently, it is suggested that the Railway Station picnic area be considered as the nucleus for all travel-oriented activities in State Forest around Dwellingup.

(e) Trail bike.

Trail bike usage is high in Dwellingup townsite, including the railway station and also at the old Holyoake town area. No facilities or management has been provided for these uses. However, proper use zoning should reduce conflict with passive recreationists by provision of approved areas and patrol for illegal activity in liaison with Murray Shire

2.6.4 Darling Escarpment - Marrinup, Whittaker

(a) Picnic/BBQ

Facilities are provided at two sites on the Darling Scarp at Oakley Dam and Gold Mine Hill. They are coping with current demand but with supply of a recreation directory to the general public in the near future demand will increase greatly. Hence, increase and supply is warranted and should be well-planned to conserve the scenic amenity of the sites. Further sites are available on the Scarp in Whittaker, Marrinup and Turner blocks but need careful consideration due to access problems.

(b) Camping

There is a moderate demand for camping at Oakley Dam which is satisfied by the current available space at this site. Many school groups and other users of the Bibbulmun Track use it for tent camping, however, caravan camping has also occurred.

Aspects of concern include site capability for this activity, personal hygiene and conflict with one-day visitors.

Camping facilities for Bibbulmun Track users are needed but caravan camping should be deterred.

(c) Bushwalking.

The Bibbulmun Track passes through the Marrinup zone of this unit and caters adequately for current and projected demand for long walks. However, many "Wild" trails have been worn by recreationists at both formal picnic areas. This demand needs to be satisfied by construction of short interpretative walk trails.

(d) Visitor Education and Information.

Comments are similar to Section 2.6.1 part (g) and Section 2.6.3. part (c).

(e) Rock Climbing.

Demand for this activity within the area of this plan is unknown.

Provisions of a well-planned area away from other passive activities should proceed to cater for the possibility of future demand.

2.6.5 South Dandalup Dam.

This recreation management zone has the site and facilities to cater adequately for current usage for the permitted activities.

This Department can become more involved in the South Dandalup Dam picnic site through provision of interpretative walk trails and visitor information.

2.6.6 Highways - Pinjarra-Williams Rd, Del Park Rd, Nanga Rd, River Rd, Park Rd, Murray Valley Rd, Waroona Rd, Scarp Rd.

Demand for use of these roads as access to the Murray Valley zones is extremely high and very likely to increase greatly. Supply is currently well catered for however aspects for concern include, road safety, and conditions, landscape considerations for operation in forest adjacent to these roads, lack of information bays and signposting and die-back hygiene problems.

2.6.7 Highways - Del Park Rd, Pinjarra-Williams Rd, Scarp Road, North Spur Rd.

Usage of these roads as access to the Lateritic Uplands and Darling Escarpment management units of the Western forest (including Dwellingup Township) is also high and likely to increase. Del Park Rd, especially, is certain to be under heavy use pressure with continuous upgrading to MRD highway standards.

Supply considerations of concern include road conditions, road safety, landscape considerations and lack of information bays.

2.6.8 Highways - Pinjarra-Dwellingup Railway Line.

Increased pressure of Hotham Valley Tourist Railway excursions in Dwellingup will mean continuing and increasing use of this line. The Department has a responsibility to ensure that the train trip experience is maintained through control of operations adjacent to the track. Some forest improvement and gravel pit rehabilitation works are necessary to improve scenic amenity.

2.6.9 Murray Plantation.

The plantation is under pressure for use for camping, pleasure driving, sightseeing and organised car rallies. This pressure will increase with the expansion of recreation demand in the Murray Valley zone. The plantation is not currently managed for recreation and no facilities or sites have been provided.

2.6.10 Lateritic Uplands - Whittaker, Turner, Marrinup.

The proximity of these zones to the coastal plain ensures continuing demand for areas of forest for activities including bush walking, picnicking, sightseeing, pleasure driving and fire wood collection.

Bushwalking is currently supplied by the Bibbulmun Track, however, improvements including overnight camping areas could be suitable.

Picnicking, sightseeing and pleasure driving are not catered for in these zones by the Department. Self-guided tours and suitable feature-oriented destination for picnics are necessary. Education of the visiting public or forest management and land use problems could be done based on tours, stopovers and walk trails.

Firewood collection is mostly difficult to police and dieback hygiene is lacking.

2.6.11 Lateritic Uplands - Teesdale.

Teesdale uplands zone is heavily used for organised trail and trial bike events.

This level of demand is likely to continue and expansion of activity should occur. The Department has applied management to this area in the past for this activity. Liaison with organised clubs has occurred. However, there is need to improve our efforts regarding organised bike events to adequately cater for demand and protect environmental values and other forest users.

Bushwalking is the other main use of this zone and is in heavy demand. The Bibbulmur Track is considered capable of satisfying current and future demand in this zone.

#### 2.6.12 Highways - Albany Highway.

There is heavy and increasing use of Albany highway by travellers passing through State Forest bound for other destinations.

In Dwellingup there is no F.D. input into parking bays on areas adjacent to State Forest. There is scope for provision of information boards and interpretative walk trails at selected locations. Thought should also be given to establishment of picnic areas in conjunction with the parking bays, although their remoteness will increase maintenance costs.

#### 2.6.13 Lateritic Uplands - Park.

This zone is heavily dieback affected and has been used in the past by trail bike enthusiasts. Some F.D. planning and management has occurred.

In the future this zone could be used to take trail bike demand pressure away from the adjacent Murray Valley zones. The other current use occurring in this area is sightseeing. No provision has been made for this activity.

#### 2.6.14 Lateritic Uplands - Holmes.

Bushwalking, sightseeing and pleasure driving are the main activities occurring in this zone.

The Murray circuit of the Bibbulmur Track is satisfying demand for walking tracks in this area although consideration needs to be given to restricting vehicle use of the track.

Aspects concerning sightseeing and pleasure driving were discussed in section 2.6.6.

#### 2.6.15 Lateritic Uplands - Torrens, Urbrae.

These areas are currently used for pig hunting, some firewood gathering and sightseeing. No Department input has been made

into these activities.

Provision could be made for extension of the self-guided tour network into these zones with picnic areas based on historic sites (old settlements, mill, etc.)

#### 2.6.16 Lateritic Uplands - Disease Risk Zones.

These are lateritic upland zones that have been proclaimed disease risk areas under the Forest Act Disease Regulations. These zones have been used illegally by pig hunters and as access to marron resources of the South Dandalup Dam and the Murray River. Demand for these activities is quite high, however, the Department does not sanction, or provide for, their conduct.

Following Cabinet approval of re-entry into quarantine for specific operations, public demand for use of quarantine for recreation activities may increase.

#### 2.6.17 Plantations - Hamel Plantation and Nursery.

Usage of Hamel for picnics and BBQ's is quite high, especially during despatch season. People coming to collect plants do spend time having a picnic lunch. However, there is no provision for this activity.

3.

WORKING PLAN

3.1 USE ZONING CONCEPT

The system of recreation management discussed in the Recreation Framework Plan is use zoning.

This system will be applied in this plan.

It involves allocating recreation activities sharing similar environmental and cultural requirements to designated management units or zones. The assignment of activities to specified areas is based on user needs, assessed recreation land use capabilities, and legislature, environmental and management constraints which currently exist.

To achieve adequate implementation of the zoning strategy 4 factors must be fulfilled:

- (i) allocation of activities to areas is realistic in providing environments user groups prefer.
- (ii) users are fully informed about why and where specified areas have been allocated.
- (iii) access and facilities are planned and located so as to encourage the type(s) of activities allocated to a specific area.
- (iv) activities allocated to a particular zone are compatible.

The compatibility relationships of various recreational pursuits in the plan area are summarised in Table .

3.2 DEVELOPMENT PROPOSALS

1. Darling Escarpment.

1.1 Whittaker

Allocated activities - nature study  
picnicking  
photography/painting  
bushwalking

Development location

1. Gold Mine Hill, Whittaker Road.

Features - scenic views, old gold mine, scarp vegetation

- Developments - (a) increase picnic units by two
- (b) walk trail loop
  - (c) track closure
  - (d) stabilisation/drainage of Whittaker Rd.
  - (e) signposting
  - (f) information board
  - (g) walk trail to Whittaker Mill
  - (i) written guide - ecology, history
  - (j) picnic site redesign



TABLE 3.1: RECREATION ACTIVITY COMPATIBILITY MATRIX

ACTIVITIES		DESTINATION-ORIENTED														TRAVEL-ORIENTED								
		Picnicking	Nature study	Photography/painting	Hunting	Tent camping	Caravan camping	Shooting (clubs)	Rock climbing	Swimming/wading	Canoeing/rowing	Sailing	Motor boating/skiing	Fishing	Marroning	Pleasure driving	Car rallying	Trail/trial bike riding	4 x 4 touring	Cycling	Bushwalking	Horseriding	Running/Jogging	Rogaining/Orienteering
DESTINATION-ORIENTED ACTIVITIES	Picnicking	-																						
	Nature study	C	-																					
	Photography/painting	C	C	-																				
	Hunting	I	I	M	-																			
	Tent camping	M	C	C	M	-																		
	Caravan camping	M	C	C	I	M	-																	
	Shooting (clubs)	I	I	M	I	I	I	-																
	Rock climbing	C	C	C	I	C	C	■	-															
	Swimming/wading	C	M	C	I	C	C	■	■	-														
	Canoeing/rowing	C	C	C	I	C	C	■	■	C	-													
	Sailing	C	C	C	I	C	C	■	■	C	M	-												
	Motor boating/skiing	C	M	C	I	C	C	■	■	M	M	M	-											
	Fishing	C	C	C	I	C	C	■	■	M	M	M	I	-										
	Marroning	C	C	C	I	C	C	■	■	M	M	M	I	C	-									
TRAVEL-ORIENTED ACTIVITIES	Pleasure driving	C	C	C	I	C	C	■	■	■	■	■	■	■	■	-								
	Car rallying	M	M	M	I	M	M	■	■	■	■	■	■	■	■	M	-							
	Trail/trial bike riding	I	M	M	I	I	I	I	■	■	■	■	■	I	I	I	M	-						
	4 x 4 touring	M	M	C	M	M	M	■	■	■	■	■	■	M	M	C	M	M	-					
	Cycling	C	C	C	I	C	C	■	■	■	■	■	■	■	■	C	M	I	M	-				
	Bushwalking	C	C	C	I	C	C	I	C	C	C	■	■	C	C	M	I	I	I	C	-			
	Horseriding	M	C	C	I	C	C	I	■	■	■	■	■	M	M	M	I	I	I	C	M	-		
	Running/jogging	C	C	C	I	C	C	I	■	■	■	■	■	■	■	M	I	I	M	C	C	M	-	
	Rogaining/orienteering	C	M	C	I	C	C	I	C	■	■	■	■	M	M	M	I	I	I	C	C	M	C	-

Legend: C = Compatible  
M = Compatible under management  
I = Incompatible  
■ = Not applicable (unlikely to compete for the same areas or resources)

1.2 Turner

Allocated activities - nature study  
photography/  
painting  
bushwalking

Development location - nil

Features - scenic views, solitude,  
extensive wandoo on scarp, rock outcrop  
scarp vegetation

Developments - (a) track closure  
(b) reserve for future  
use.

1.3 Marrinup

Allocated activities - nature study  
picnicking  
photography/  
painting  
bushwalking  
backpack camping  
only  
rock climbing  
orienteering

Development locations:

1. Oakley Dam

Features - old railway dam, scenic  
views, rock outcrops, scarp vegetat-  
ion.

Developments (a) increase picnic  
units by two  
(b) septic toilets  
(c) walk trail loop  
(d) information board-  
historical  
(e) written guide -  
ecology, history,  
Alcoa Pinjarra  
Refinery  
(f) track closure

2. Rock climbing area, Marrinup, West  
of Scarp Rd.

Features - suitable climbing area.

Developments - (a) prescribe  
environmental  
and management  
requirements  
(b) liaise with  
potential user  
groups

3. Bibbulmun Track

Developments - track closure to  
vehicles.

2. Dissected River Valleys

2.1 North Dandalup River

Allocated Activities - bushwalking,  
Bibbulmun Track  
only  
picnicking at  
MWA approved  
sites  
nature study  
photography/paint-  
ing

Development locations - N/A

Developments - (a) track closure - no  
vehicle access to  
Bibbulmun Track

2.2 Whittaker Mill

Allocated Activities - bushwalking  
picnicking  
nature study  
backpack camping  
orienteering/ ro-  
gaining

Development locations

1. Whittaker Mill Site and Settlement

Features - historical site, flat open  
area, water available

Developments - (a) track closure to  
Bibbulmun track  
(b) overnight camping  
area to service  
Bibbulmun track  
(c) 4 picnic units  
(d) site rehabilitation  
(e) vehicle parking  
(f) walk trail loops  
(g) walk trail to Gold  
Mine Hill  
(h) toilets  
(i) shelter for walkers  
(j) possible use as  
orienteering area.

2.3 Little Dandalup Creek

Allocated Activities - bushwalking,  
Bibbulmun Track  
only  
picnicking at MWA  
approved sites  
nature study  
photography/paint-  
ing.

Development locations

1. Huntly Settlement

Features - historical area, pine plot,  
swamp and jarrah vegetation

- Developments - (a) track closure  
(b) vehicle parking  
(c) 4 picnic units  
(d) toilets  
(e) information board -  
historical  
(f) walk trail loops  
(g) walk trail connected to  
Bibbulmun Track at Del  
Park Rd  
(h) written guides

2. Bibbulmun Track

Developments - track closure to vehicles

2.4 South Dandalup River

Allocated Activities - bushwalking on  
Bibbulmun Track only  
picnicking at MWA  
approved sites  
nature study  
photography/painting

Development locations

1. Bibbulmun Track

Developments (a) track closure to vehicles

2. MWA South Dandalup - Perth pipeline

Developments (a) rehabilitation/land-  
scaping

3. Del Park Rd bridge

Feature - South Dandalup River, river  
vegetation

Developments (a) 2 picnic units  
(b) walk trail loop  
(c) information board

2.5 Oakley Brook

Allocated Activities - bushwalking  
picnicking  
nature study  
backpack camping  
photography/painting

Development locations

1. Access to Oakley Dam

Developments (a) gravel, drain, grade,  
stabilise  
(b) light understorey veg-  
etation  
(c) plot silvicultural work

2. Oakley Brook - Scarp Rd waterpoint

Feature - river valley vegetation, water  
Developments (a) two picnic units  
(b) walk trail loop  
(c) walk trail to Oakley Dam  
(d) vehicle parking

3. Bibbulmun Track

Developments (a) track closure to vehicles

2.6 Marrinup Brook

Allocated Activities - pleasure driving  
sightseeing  
picnicking  
backpack camping  
nature study  
photography/painting

Development locations

1. Marrinup self-guided tour

Developments (a) construction of stopover  
and information bays  
according to prescription  
prepared by Extensions  
Branch

2. Marrinup Brook

Feature - perennial brook, river vegetation,  
rock outcrops

Developments - (a) vehicle parking  
(b) camping area landscaping  
(c) information board  
(d) Bibbulmun Track regis-  
tration station  
(e) two picnic units  
(f) walk trail to Marrinup  
Falls and Greys Rd

3. Bibbulmun Track

Developments (a) track closure to vehicles

4. Teesdale

Features - isolated gully, river vegetation

Developments (a) track closure  
(b) reserve for future use

2.7 Murray Valley - Teesdale/Park (West of Nanga  
Rd)

Allocated Activities - bushwalking  
nature study  
photographing/painting  
backpack camping  
swimming/wading

Development locations

1. Scarp Pool

Features - Murray river and vegetation,  
steep slopes

Developments (a) erosion works, batters,  
walls, fill  
(b) replace BBQ's  
(c) Two more picnic units  
(d) information board - Tees-  
dale MPA  
(e) control foot access along  
river bank  
(f) Bibbulmun Track backpack  
camping area  
(g) toilets (replace with  
WC's)

- (h) walk trail loops into MPA
- (i) walking bridge across Murray River
- (j) written information/guide

2. Scarp Lookout  
Features - scenic views, virgin jarrah, Teesdale, MPA.

- Developments
- (a) replace BBQs
  - (b) 2 more picnic units
  - (c) walk trail loops
  - (d) information board

3. Teesdale MPA

Developments (a) track closure in Teesdale Block

- (b) maintain Farley's Rd closed to vehicles
- (c) gate at northern end of Farley's Rd
- (d) track closure in Park Block
- (e) close Murray River fireline

4. Bibbulmun Track

Developments (a) track closure to vehicles

2.8 Murray Valley - Park (east of Nanga Road)

Allocated activities - bushwalking  
picnicking  
camping  
nature study  
photographing/painting  
swimming/wading  
canoeing  
marroning

Development locations

1. Toms Crossing - Murray Valley Rd & Park Rd  
Developments (a) close to vehicle access with gates

2. Baden Powell  
Features - river pool, rapids, pine plantation

- Developments
- (a) separate vehicle parking and pedestrian
  - (b) erosion control
  - (c) access control
  - (d) allow no camping on river bank
  - (e) install septic toilets

- (f) four more picnic units
- (g) replace BBQ's
- (h) information board
- (i) walk trail loop to southern side of river

3. Bobs Crossing

Feature - good access to river, river pool, river vegetation, flat

Developments (a) provide 30 tent sites south side of river upland of Murray Valley Road

- (b) six picnic units
- (c) septic toilets
- (d) information board
- (e) walk trail loops
- (f) close access to river (both sides) for camper<sup>s</sup>
- (g) construct canoe launching area
- (h) separate vehicles/ pedestrians

4. Area south side of river between Bobs Crossing and Nanga

Feature - flat, suitable for camping, river pool

Developments (a) provide 20 tent sites upland side of road

- (b) four picnic units
- (c) septic toilets
- (d) walk track to river - no vehicle access
- (e) canoe launch area
- (f) walk trail loops
- (g) information board
- (h) vehicle parking
- (i) separate pedestrian/ vehicles

5. Davies Brook (triangle between Park Rd and River Rd)

Features - flat, fresh running water, pines (shade), river vegetation, large pool

Developments (a) provide 20 camp sites in pines

- (b) fuel reduce pines
- (c) septic toilets
- (d) 4 picnic units
- (e) walk track to river
- (f) no camping within 20m of river or Davies Brook
- (g) information board
- (h) vehicle parking
- (i) separate pedestrians/vehicles

6. Small "wild" Campsites

- Developments (a) close these campsites
- (b) close access
- (c) rehabilitation
- (d) signs explaining rehabilitation

7. Murray-Yarragil Scenic Drive

Features - river vegetation, scenic views,  
vegetation changes, river views

- Developments (a) use River Road
- (b) signposting
- (c) information boards for stop-over
- (d) written guide

2.9 Murray Valley - Holmes

Allocated Activities - bushwalking  
nature study  
photography

Departmental locations

1. Davies Brook to Holyoake walk trail

Features - scenic views, vegetation changes,  
forest management examples

- Developments - (a) walk trail from Davies Brook along River Road to small fireline. Along fireline to Pinjarra-Williams Rd. From there to railway and along railway to Holyoake and Dwellingup.

2. Bibbulmun track

- Developments (a) track closure to vehicles

2.10 Murray Valley - Holyoake

Allocated activities - pleasure driving  
bushwalking  
nature study  
photography/painting

Development location

1. Holyoake self-guided tour

Features - excellent forest stand, vegetation,  
railway line

- Development (a) one-way self-guided tours from Dwellingup through Holyoake, along railway line returning to Dwellingup
- (b) written tour information
- (c) track closure
- (d) link to picnic site at Holyoake

2.11 Murray Valley - Plavins

Allocated activities - tent camping  
picnicking  
bushwalking  
pleasure driving  
nature study  
photographing/painting  
swimming/wading  
fishing  
marroning



Development locations

1. Plavins MPA

Features - Conservation MPA, high quality jarrah forest

Developments (a) track closure  
(b) written information guide

2. Small "wild" campsites

Developments (a) closure of campsite and access  
(b) rehabilitation  
(c) sign posting explaining rehabilitation

3. River Road camping area.

Features - flat, cleared (gravel pit, surrounding high quality jarrah forest, adjacent to river

Developments (a) 20 camp sites upland side of River Rd  
(b) revegetation/rehabilitation  
(c) vehicle parking and access  
(d) 4 picnic units  
(e) walk track to river  
(f) septic toilets  
(g) signposting  
(h) walk trail loops  
(i) canoe launching area  
(j) information board

4. Island Pool

Features - large river pool, scenic, river vegetation, small rapids

Developments (a) 30 camp sites upland side of River Rd  
(b) upgrade picnic area on river banks  
(c) septic toilets  
(d) vehicle access and parking  
(e) 4 new picnic units  
(f) information board  
(g) walk trail loops  
(h) track closure to south side of river  
(i) walking bridge  
(j) erosion control working

5. Yarragil Brook

Features - secluded, river vegetation, pools

Developments (a) 10 camp sites  
(b) septic toilets  
(c) track closure  
(d) 2 picnic units  
(e) no camping on river bank  
(f) walk trail loop  
(g) canoe launching area  
(h) erosion control

6. Murray - Yarragil - self-guided tour

Developments (a) information boards at stopovers  
(b) written guide

Allocated activities - picnicking  
nature study  
photography/painting  
camping - tent and caravan  
swimming/wading  
fishing  
marroning  
group camps

Departmental locations

1. Nanga adjacent to river

Features - close to river, river vegetation

- Developments - (a) 40 camp sites  
(b) no camping on river banks  
(c) septic toilets  
(d) 6 new picnic units  
(e) track closure  
(f) vehicle parking and access  
(g) erosion control  
(h) information board  
(i) walk trail loops  
(j) canoe launching area  
(k) access to river controlled

2. Nanga Mill

Features - relatively flat, suitable for camping, shade (pines), adjacent high quality forest, running potable water.

- Developments - (a) 200 camp sites  
(b) track closure/access control  
(c) vehicle parking  
(d) septic toilet pairs  
(e) information board - historical  
(f) walk trail loops  
(g) firewood  
(h) revegetation and rehabilitation  
(i) no camping close to Nanga Brook  
(j) 16 new picnic units  
(k) erosion control  
(l) 2 shelters in picnic areas

3. Nanga townsite

Features - flat, cleared, adjacent to potable water, river valley vegetation, high quality jarrah forest.

- Developments (a) 3 camping areas of 40 camp site size  
(b) 3 septic toilet pairs  
(c) 1 shelter  
(d) 4 picnic units at each site  
(e) walk trail loops  
(f) allocate these areas to large groups  
(g) revegetation  
(h) no camping within 20m of Nanga Brook

- (i) vehicle access and parking
  - (j) track closure
4. North Junction - South Junction self guided tour and camping areas.  
 Features - secluded, river vegetation large pools and rapids, historic ~~old~~ tramway formation, tramway bridge remains.
- Developments (a) self-guided tour  
 (b) camping/picnic areas at Christmas Creek and Dawn Creek  
 (c) historical guide - tramway logging
5. Small "wild" campsite  
 Developments (a) closure of campsites and access  
 (b) rehabilitation  
 (c) sign posting explaining rehabilitation
- 2.13 Murray Valley - Yarragil, Young, Howse, Pascoe  
 Allocated activities - 4x4 touring  
 camping - tent  
 picnicking  
 swimming/wading  
 fishing  
 marroning  
 canoeing  
 bushwalking
- Development locations
1. Murray River Fireline 4x4 tour  
 Features - 4x4 track, secluded, river vegetation, high quality forest, large pools and rapids  
 Developments - (a) 4x4 self-guided tour  
 (b) wild/primitive camping  
 (c) written guide on primitive camping
2. Pascoe walk trail  
 Features - remote, Conservation MPA buffer, high quality jarrah forest, river vegetation  
 Development (a) walk trail system linked to Long Gully Bridge picnic area
3. Long Gully Road self-guided tour  
 Features - vegetation transition, river views, high quality jarrah forest  
 Developments (a) self-guided tour from Long Gully Bridge to Hakea pines  
 (b) bridge upgrade  
 (c) stopover construction  
 (d) written tour guide
- 2.14 Murray Valley - Keats, Federal, Tumlo, Chalk  
 Allocated activities - pleasure driving  
 picnicking  
 camping  
 nature study  
 bushwalking  
 canoeing  
 swimming/wading  
 fishing  
 marroning

Development locations - the following are suitable sites but are under Harvey Division Control

1. Camping/picnicking - sites along South Junction Form, Drivers Rd touring ford, Muddy Landing Rd, Calona Form, newly constructed fireline, Tumlo pines, Long Gully Bridge
  2. Features - tramway bridge ruins, large pools, rapids, high quality jarrah forest
- 2.15 Murray Valley - Bell  
Allocated activities - bushwalking  
photography/painting  
nature study

No developments

### 3. LATERITIC UPLANDS

#### 3.1 Torrens, Wilson, Urbrae

Allocated activities - bushwalking,  
Bibbulmun Track only  
picnicking at MWA  
approved sites

Development locations

1. Huntly walk trail loops - see little Dandalup Creek

#### 3.2 Whittaker

Allocated activities (a) On Zone 1 catchment  
bushwalking  
Bibbulmun Track  
only  
picnicking at  
MWA approved  
sites

(b) Off Catchment  
bushwalking  
picnicking  
nature study  
photography/  
painting  
camping

Development locations

1. Bibbulmun Track (a) reroute more sections off tracks  
(b) track closure to vehicles
2. Whittaker Mill  
Developments (a) track closure  
(b) integrated walk trails with Whittaker Mill trail loops  
(c) walk trail to Gold Mine Hill

#### 3.3 Turner, Murrinup

Allocated activities (a) Zone 1 catchment  
bushwalking  
Bibbulmun Track  
only  
picnicking, MWA

- approved site
- (b) off Catchment
  - bushwalking
  - picnicking
  - nature study
  - photography/painting
  - orienteering
  - pleasure driving

Development locations

1. Marrinup self-guided tour
  - Developments (a) prescription written by Extensions Branch
2. Bibbulmun Track
  - Developments (a) track closure to vehicles
  - (b) reroute selected sections through bush
3. Orienteering Area
  - Developments (a) select area and demarcate
  - (b) write prescription and management guidelines
4. Marrinup Townsite
  - Features - historical, jarrah pole stands, vantage point for steam train
  - Developments (a) 6 picnic units
  - (b) walk trail loops
  - (c) information board
  - (d) toilets
  - (e) part of Marrinup Tour

3.4 Teesdale

- Allocated activities - bushwalking  
 picnicking  
 nature study  
 photography/painting  
 trail bikes

Development locations

1. Teesdale Trail bike area (West Teesdale)
  - Features - severely dieback affected forest, relatively flat
  - Developments - (a) select area and demarcate
  - (b) base camp area - 20 campsites
  - (c) toilets
  - (d) 4 picnic units
  - (e) signposting
  - (f) no access to creek gullies or firebreaks
  - (g) maintain 100m buffer with private property and Bibbulmun Track
2. Bibbulmun Track - Teesdale east
  - Developments (a) track closure to vehicles

- (b) reroute track through forest where appropriate (i.e. off vehicle tracks, roads)

### 3.5 Park

Allocated activities - bushwalking  
picnicking  
nature study  
photography/painting  
trail bike area

Development locations

#### 1. Park trail bike area

Features - severely dieback affected forest relatively flat

- Developments
- (a) select area and demarcate
  - (b) base camp at Nanga townsite
  - (c) no access to creek gullies
  - (d) 100m buffer with dissected river valleys and private property
  - (e) signposting
  - (f) written prescription and management guidelines

#### 2. Dwellingup - Waroona Scenic drive

Features - advanced dieback areas, vegetation transitions, softwood plantation forestry, scenic views

- Developments
- (a) stop overs with information boards
  - (b) written tour guide
  - (c) make feature of Stawell Rd dieback
  - (d) route to follow Nanga Rd Stawell Rd and Waroona Rd

### 3.6 O'Neill (Disease Risk Area)

Allocated activities - bushwalking  
picnicking  
nature study  
photography/painting  
pleasure driving

Development locations

#### 1. North East Road self guided tour

Developments - stopovers and information boards

#### 2. O'Neill Brook picnic area (North East Rd)

Features - attractive, steep sided brook which drains into Serpentine Dam, E.rudis stands, jarrah forest adjacent

- Developments -
- (a) 4 picnic units
  - (b) information board
  - (c) vehicle parking and access
  - (d) walk trail loops
  - (e) integrate with North-East Rd scenic drive

### 3.7 White, Scott, Banksiadale (Disease Risk Area)

Allocated activities (a) Catchment Zone 1  
pleasure driving (open  
road only)  
nature study  
photography/painting

Development locations

1. North East Road self-guided tour

Developments (a) stopovers and information boards  
(b) re-route North East Rd progressively

### 3.8 Holyoake

Allocated activities (a) Catchment Zone 1  
nature study  
photography/painting  
(b) Catchment Zone 3  
(i) Disease Risk Area  
bushwalking  
nature study  
photography/painting  
(ii) Non-quarantine  
bushwalking  
picnicking  
pleasure driving  
nature study  
orienteering

Development locations

1. Holyoake Townsite

Features - historic area, mill site, railway line, housing ruins, open, relatively flat, E.rudis stand, adjacent jarrah forest

Developments (a) liaison with Murray Shire  
(b) 6 picnic units  
(c) septic toilets  
(d) vehicle parking and access  
(e) information board  
(f) signposting  
(g) walk trail loops  
(h) Holmes walk trail

2. Holyoake self-guided tour

Developments (a) see section 3.2.2. Part(x)  
Murray Valley - Holyoake

3. Holyoake orienteering area

Developments (a) select area and demarcate  
(b) written prescription and management guidelines  
(c) use Holyoake picnic area as base

4. Dwellingup Railway Station

Features - railway station, Dwellingup townsite, Hotham Valley Tourist Railway Steam trains

Developments (a) 2 picnic units  
(b) childrens' playground  
(c) Railway Station museum  
(d) walk trail loops into surrounding forest  
(e) information board  
(f) start point for Marrinup, Holyoake tours

- (g) written guides and information
- (h) liaise with HVTR and Westrail regarding landscape of Railway Station

### 3.9 Holmes

Allocated activities - bushwalking  
nature study  
photographing/  
painting

Development locations

#### 1. Holmes walk trail

Developments (a) see Section 3.2.2.  
Part (ix)

(b) interpretative  
material

#### 2. Bibbulmun Track

Developments (a) track closure to  
vehicles

(b) reroute appropriate  
sections through  
forest

### 3.10 Plavins (Disease Risk Areas)

Allocated activities - nature study  
photography/paint-  
ing  
bush walking

Development locations

#### 1. Plavins walk trail system

Developments - (a) integrated walk  
trail system with  
Island Pool picnic/  
camping area.

(b) track closure to  
vehicles

#### 2. Plavins Conservation MPA

Developments (a) Access closure to  
vehicles

### 3.11 Boonerring, Duncan, Cameron (Disease Risk Area)

Allocated activities (a) Catchment Zone 1  
nil

(b) Catchment Zone 2  
bushwalking  
nature study  
photography/paint-  
ing  
pleasure driving

Development locations

#### 1. Pindalup - Windsor self-guided tour

Developments (a) Dieback policy 7 point  
test

(b) rerouting of upland  
road sections

(c) stopovers and informati<sup>n</sup>  
boards

(d) track closure

### 3.12 Kennedy (Disease Risk Area)

Allocated activities (a) Catchment Zone 1  
Nil



- (b) Catchment Zone 2
  - picnicking
  - bushwalking
  - nature study
  - photography/painting
  - pleasure driving

Development locations

1. Pindalup - Windsor self-guided tour  
Developments - see Section 3.2.3. Part (xi)
2. Duncans Pines

Features - flat, pine plot providing shade,  
adjacent jarrah forest

- Developments
- (a) 4 picnic units
  - (b) information board
  - (c) vehicle access and parking
  - (d) walk trail logs
  - (e) integrate with Pindalup-Windsor tour
  - (f) track closure

3.13 Inglehope, Pindalup, Amphion (Disease Risk Area)

Allocated activities - picnicking  
pleasure driving  
bushwalking  
nature study  
photography/painting

Development locations

1. Inglehope Arboretum

Features - arboretum, surrounding high  
quality jarrah forest, old  
sleeper cutters camp

- Developments
- (a) old arboretum - Cadet training area
  - (b) 4 new picnic units
  - (c) toilets
  - (d) information shelter
  - (e) walk trail loops
  - (f) upgrade and redesign
  - (g) new tour guide

2. Inglehope - Chadoora self-guided tour

Features - high quality jarrah pole stand,  
railway, small private property  
block, active forest management

- Developments
- (a) stopovers
  - (b) information boards
  - (c) written tour guide

3.14 Wells, Hedges, Bombala

Allocated activities - bushwalking  
nature study  
photography/painting  
pleasure driving

Development locations

1. Pindalup - Windsor tour  
Developments - see Section 3.2.3. Part(xi)
2. Wells tour

Features - road to Mt. Wells and Wells  
Fire tower

- Developments (a) road upgrading
- (b) track closure to vehicles
- (c) sign positing

3. Waraming

Features - old rail siding, forest settlement and spot mill

- Developments (a) 4 picnic units
- (b) toilets
- (c) information board
- (d) walk trail loops
- (e) vehicle access and parking
- (f) integrate with Pindalup-Windsor tour

3.15 Curara, Yarragil, Young, Hakea, Howse

Allocated activities - pleasure driving  
bushwalking  
nature study  
photography/painting

Development locations

1. Murray-Yarragil tour

- Developments (a) see Section 3.2.2. Part (viii)
- (b) stopovers
- (c) information boards
- (d) reroute and upgrade Yarragil Form

3.16 Taree

Allocated activities - bushwalking  
nature study  
photography/painting

Development locations

No developments

3.17 Pascoe

Allocated activities - bushwalking  
nature study  
photography/painting

Development locations

1. Pascoe walk trail system

Features - steep, high quality jarrah forest, views of Murray River

- Developments (a) walk trails integrated with Long Gully Bridge picnic area.
- (b) trail guides

4 MONADKNOCKS

4.1 Boonerring

Allocated activities - bushwalking  
nature study  
photography/painting

Development locations -

1. Boonerring Hill

Features - Monadnock vegetation, scenic views

- Developments (a) walk trail systems integrated with Boonerring picnic area.

- (b) track closure to vehicles
  - (c) lookout (inconspicuous)
- 2. Monadnock bush walking track
  - Features - monadnock vegetation, scenic views
  - Developments (a) walking track through Bonerring, Duncan and Wells Monadnock zones terminating at Mt. Wells
- 4.2 Duncan
  - Allocated activities - bushwalking  
backpack camping  
nature study  
photography/painting
  - Development locations
    - 1. Monadnock bushwalking track  
see above Section 3.2.4. Part 1
- 4.3 Gyngoorda
  - Allocated activities - bushwalking  
nature study  
photography/painting
  - Development locations
    - 1. Bannister Hill
      - Features - jarrah-wandoo forest, monadnock vegetation, scenic views
      - Developments (a) walk trail and lookout linked to Gyngoorda picnic area in Gyngoorda Eastern woodland zone.
      - (b) interpretive material concerning Gyngoorda MPA and monadnock vegetation
- 4.4 Wells
  - Allocated activities - pleasure driving  
bushwalking  
picnicking  
nature study  
photography/painting
  - Development locations
    - 1. Wells tour  
see section 3.2.3. Part XIV
    - 2. Mt. Wells
      - Features - scenic views, FD firetower
      - Developments (a) 2 picnic units
      - (b) lookout facilities
      - (c) walk trail loops
      - (d) Monadnock bush walking track terminal
      - (e) information board
      - (f) written guides
- 4.5 Saddleback
  - Allocated activities - bushwalking  
picnicking  
camping  
pleasure driving  
nature study  
photography/painting
  - Development locations - Nil
  - Objective - Conduct a broad scale investigation into

recreation and mining in Saddle-back Block.

Write a long term development plan for the post-mining phase.

#### 4.6 George

Allocated activities - pleasure driving  
picnicking  
bushwalking  
nature study  
photography/painting

Development locations

##### 1. George Hill

Features - jarrah forest ecosystem,  
scenic views, FD fire tower

Developments (a) 2 picnic units  
(b) walk trail loops  
(c) use of tower as look-out  
(d) terminal for George Tower  
(e) information board

### 5. EASTERN WOODLANDS

#### 5.1 Boonerring

Allocated activities - picnicking  
bushwalking  
nature study  
photography/painting

Development locations

##### 1. Boonerring picnic area

Features - close to Boonerring Monadnock.

Developments (a) 5 picnic units  
(b) walk trail to Boonerring Hill  
(c) walk trail loops  
(d) toilets  
(e) information board  
(f) guide/brochure  
(g) terminal for Monadnock Bushwalking Track  
(h) vehicle parking and access

#### 5.2 Duncan, Cameron, Wells, Hedges, Bombala

Allocated activities - bushwalking  
backpack camping  
nature study  
photography/painting

Development location

##### 1. Monadnock bushwalking track

See Section 3.2.4. Part 1

#### 5.3 Gyngoorda

Allocated activities - bushwalking  
picnicking  
nature study  
photography/painting

Development location

##### 1. Gyngoorda picnic area

Features - high quality eastern jarrah and Wandoo stand, eastern vegetation

- types, good access to Bannister Hill
- Developments (a) 6 picnic units  
(b) toilets  
(c) walk trail loops  
(d) walk trail to Bannister Hill  
(see section 3.2.4. Part III)  
(e) information board  
(f) guide/brochure  
(g) vehicle parking and access

#### 5.4 Wandering

Allocated activities - bushwalking  
photography/painting  
nature study

Development locations

##### 1. Wandering MPA (Flora, fauna and landscape)

- Development (a) track closure  
(b) rubbish removal  
(c) signposting  
(d) Management plan

#### 5.5 Murrumbidgee

Allocated activities - bushwalking  
nature study  
photography/painting  
picnicking  
trail bikes  
horse riding

Development locations

##### 1. Murrumbidgee Forest Park

Developments - Conduct broad scale investigation into suitability of Murrumbidgee Block as a forest park catering for many users. Check suitability of development as

(a) walking trails  
(b) picnic areas  
(c) trail bike areas  
(d) horse riding area  
(e) orienteering areas  
(f) nature study/conservation zones

#### 5.6 George, Hakea, Taree

Allocated activities - pleasure driving  
bushwalking  
picnicking  
nature study  
photography/painting

Development locations

##### 1. George Road tour.

Features - high quality low rainfall jarrah forest, arboretum, George Hill

- Developments - (a) link George arboretum and George Hill  
(b) stopovers and information boards  
(c) arboretum walk trails and information shelter



### 3.3 Priority Schedule

The following schedule indicates the priority for developments within Dwellingup Division.

It is ranked from highest priority first to the lowest pressure for development and is referenced to Section 2.3 (Management Zones) and Section 3.3 (Proposed Developments)

TABLE  
 PRIORITY SCHEDULE FOR PROPOSED DEVELOPMENTS

Priority	Ranking	Zone Numbers
	1	2.7, 3.4, 2.8, 7.1, 2.11, 2.12
	2	3.8
	3	1.3, 2.5, 2.6, 3.3, 7.2, 7.3.
	4	2.9, 2.10, 3.8, 3.9, 1.1, 2.2 3.2.
	5	3.4, 3.5.
	6	3.13
	7	4.3, 5.3
	8	3.11, 4.1, 5.1
	9	3.11, 4.2, 5.2
	10	3.12, 3.14, 4.4, 5.2
	11	5.5
	12	5.4
	13	4.5, 5.7
	14	2.13
	15	2.13, 3.17, 5.6
	16	2.14, 2.15
	17	4.16, 5.6
	18	3.15
	19	3.6
	A	1.1, 2.1, 2.3, 2.4, 3.2, 3.3
	B	3.1, 3.7

A - Bibbulmun Track Only - Priority 1

B - No developments



### 3.4 FIVE YEAR WORKS PROGRAMME

Year	Developments
1983/84	Scarp Pool Scarp Lookout Baden Powell Murray Plantation Plavins MPA Teesdale MPA Island Pool Nanga - river Nanga Brook Mill Bibbulmun Track - Teesdale, Park, Holmes
1984/84	Bobs Crossing Murray Valley Campsite River Rd Campsite Yarragil Brook Nanga Townsite Davies Brook Dwellingup Railway Station Murray-Yarragil Scenic Drive
1985/86	Dwellingup Railway Station River Rehabilitation - Wild Camping Areas Oakley Dam Bibbulmun Track - Turner, Marrinup Marrinup Self-guided tour Marrinup Brook Marrinup Townsite Oakley Brook
1986/87	Davies Brook - Holyoake walk track Holyoake self-guided tour Gold Mine Hill Whittaker Mill Bibbulmun Track - Whittaker Holyoake Townsite MWA - South Dandalup Dam Teesdale ORV area
1987/88	Park ORV area Inglehope Arboretum Inglehope - Chadora self-guided tour Gyngoorda MPA Bannister Hill walk track Gyngoorda picnic area

#### 4. IMPLEMENTATION

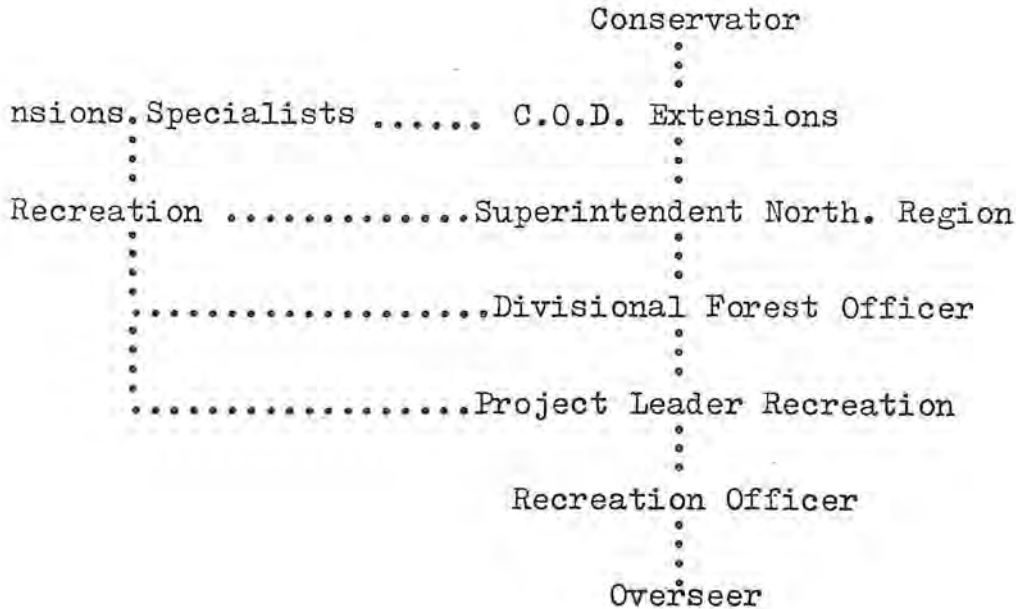
##### 4.1 Recording and Control

Recreation Officer will maintain records of recreation developments within the HOCS or POCS systems with duplicate copies forwarded to Kelmscott I & P.

This record will be indexed to all job prescriptions, specifications, site designs and standards to be followed.

## 4.2 RECREATION RESPONSIBILITIES

### 4.2.1 Recreation Chain-of-Command



### 4.2.2 Divisional Forest Officer

Responsible to Superintendent for the overall organisation and direction of the recreation development and maintenance programmes.

Controls expenditure on recreation.  
Integrates the recreation development and maintenance programmes into the annual Divisional works programme.

Reviews the performance of the Recreation Project Group at frequent intervals.

### 4.2.3 Project Leader Recreation

Responsible to the Divisional Forest Officer for all aspects of the recreation programme.

Prepares job prescriptions, specifications, site designs, standards etc. according to Extensions Branch guidelines (Recreation Operations Manual).

Prepares recreation development and maintenance programmes on a 5 year basis.

Submits annual estimates to the DFO for approval and submission to SHQ.

Reviews the performance of the Recreation Officer and Overseer regularly.

Ensures maintenance of standards in all aspects of the recreation programme.

#### 4.2.4 Recreation Officer

Responsible to the Project Leader Recreation for implementation of the recreation programme in the field.

Assists Project Leader Recreation in preparation of job prescriptions, specifications, site designs standards etc.

Implements job control procedures in the field for the overseer to maintain.

#### 4.2.5 Overseer

Responsible to the Recreation Officer for supervision of all recreation works.

Maintains standards on all works.

Ensures adequate job control.

Assists in the development of new techniques and methods.

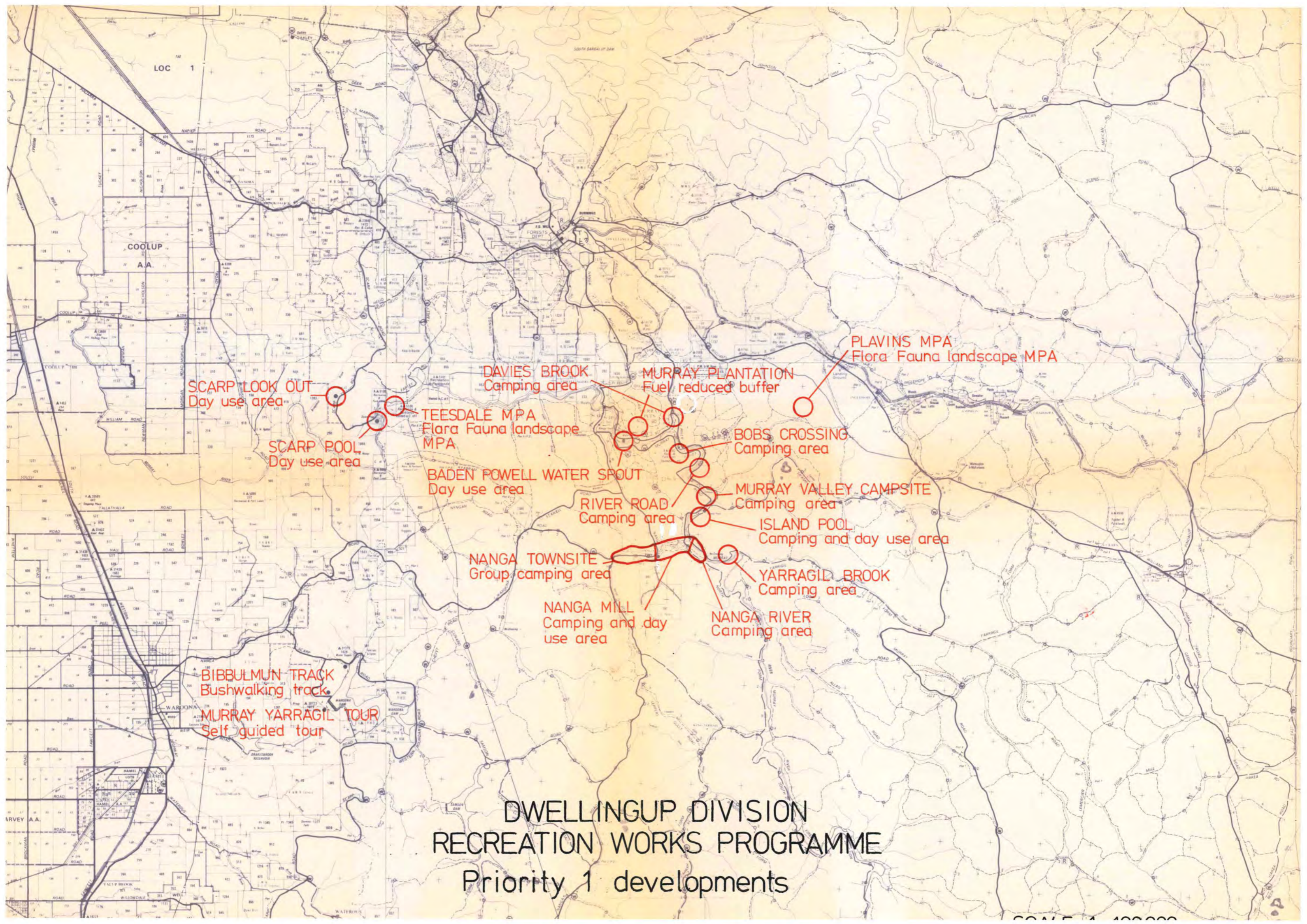
### 4.3 MAINTENANCE PROGRAMMES

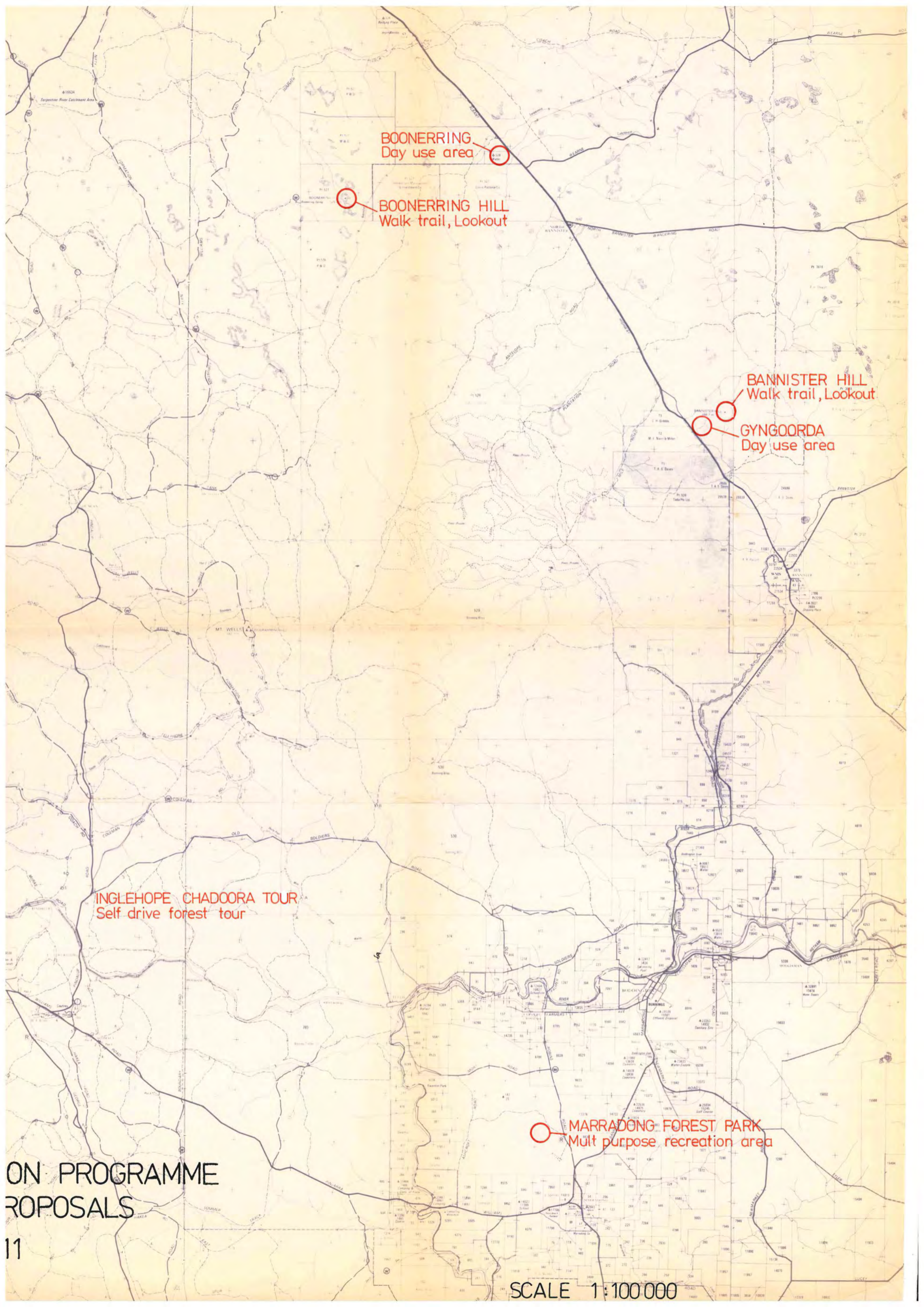
The following maintenance programmes will be designed, standards and prescriptions prepared and schedules written.

- (i) Maintenance Inspections
- (ii) Rubbish Removal
- (iii) Firewood Supply
- (iv) Damage Repair
- (v) Hazard Reduction (Fire)
- (vi) Erosion control
- (vii) Access Maintenance
- (viii) Toilet maintenance

### 4.4 PLAN REVIEW

The Divisional Plan will be reviewed annually when yearly budgets and works programmes are being developed. The Recreation Project Group will be responsible for plan review.





BOONERRIG  
Day use area

BOONERRIG HILL  
Walk trail, Lookout

BANNISTER HILL  
Walk trail, Lookout

GYNGOORDA  
Day use area

INGLEHOPE CHADOORA TOUR  
Self drive forest tour

MARRADONG FOREST PARK  
Mult purpose recreation area

ON PROGRAMME  
PROPOSALS

GOLD MINE HILL  
Day use area

WHITTAKER MILL  
Day use area Camping area

MARRINUP TOUR  
Self drive forest tour

OAKLEY DAM  
Day use area

OAKLEY BROOK  
Day use area

MARRINUP BROOK  
Day use area

MARRINUP SIDING  
Day use area, Back pack camping

HOLYOAKE MILL  
Day use area

TEESDALE TRAIL BIKE AREA  
Trail bike and O.R.V. area

DWELLINGUP RAILWAY  
Day use area

DAVIES WALK TRAIL  
Walk trail

INGLEHOPE PARK  
Day use area

PARK TRAIL BIKE AREA  
Trail bike and O.R.V. area

DWELLINGUP  
DEVELOPMENT