

RECEIVED  
DUPLICATE  
15 MAY 1992

Minister's Office

---

# LEEUVIN-NATURALISTE NATIONAL PARK

---

## CAVE PERMIT SYSTEM



DEPARTMENT OF CONSERVATION  
AND LAND MANAGEMENT

---

# LEEWIN-NATURALISTE NATIONAL PARK

---

## CAVE PERMIT SYSTEM

This document will apply for the  
period of the current management plan,  
1989 - 1999,  
unless earlier revised.



DEPARTMENT OF CONSERVATION  
AND LAND MANAGEMENT

# CONTENTS

	Page
1. Introduction ... ..	1
2. Cave Classifications ... ..	2
3. Access: Adventure Caves ... ..	3
4. Access: Restricted Access Caves ... ..	6
5. Appendices:	
I Membership of Cave Advisory Committee for the Leeuwin-Naturaliste National Park ... ..	10
II Contacts for Cavers ... ..	11
III Summary of Cave Classifications within the Leeuwin-Naturaliste National Park ... ..	12
IV Flow Charts for Caving within the Leeuwin-Naturaliste National Park ... ..	13
V Lists of Adventure Caves and Restricted Access Caves ...	14
VI Self-Accreditation Form for Trip Leader Status: Adventure Caves Class II and III ... ..	15
VII Application for a Cave Permit ... ..	17
VIII A Cave Permit Form ... ..	19
IX Finders Rights - defined ... ..	21

# 1. INTRODUCTION

---

This document describes the cave classification and permit system for access to caves in the Leeuwin Naturaliste National Park (LNNP). The introduction of a permit system was recommended in the LNNP management plan which was approved by the Minister for the Environment in February, 1989. No details of the cave permit system were available for public comment during the drafting of the management plan, however, these were later released in a draft of the permit system in November 1990.

Over 200 copies of the draft were sent to interested individuals and groups. About 100 copies were distributed from a number of outlets.

Thirty-one submissions to the original draft were received. A separate summary of public submissions is available showing all the issues raised and whether they resulted in changes to the draft.

CALM's objectives in introducing a cave permit system are to:

- \* Improve cave safety. All adventure caves will have information provided on site relevant to caving generally and to each cave specifically where necessary.
- \* Comply with the recommendation in the LNNP management plan regarding the introduction of a permit system.
- \* Improve cave conservation by classifying most of the caves as having restricted access. Access into restricted caves requires the guidance of an approved trip leader to ensure that cave trips are taken in a responsible and safe manner. A trip leader is not required for Adventure Caves Classes I and IV.
- \* Educate users on all aspects of caves by:
  - installing information signs
  - providing guided adventure cave tours
  - ensuring trip leaders conform to standards
  - providing detailed information to interested people on the cave permit system.
- \* Raise revenue on a user pay basis. Use the monies raised to rehabilitate caves and to research and monitor caves in the Park.
- \* Obtain information on the number of people using the various types of caves by:
  - recording the number of permits issued
  - providing log books (registers) at cave entrances
  - installing monitoring devices within the caves
  - analysing returns from concessions
  - monitoring tourist cave returns.

The recommendations and systems outlined in this document will be in place for the period of the management plan, unless earlier revised. It is envisaged that as the system develops caves may be added to or deleted from the various categories and this may require this document to be revised. The trip leader status for access to restricted caves (see Appendix VI for details on how to get trip leader status) has been a most difficult system to put in place. If an improved trip leader approval system can be devised then the two systems currently being used will be

reviewed. Classifications within the Restricted Access Caves may also be reviewed before this plan expires.

## 2. CAVE CLASSIFICATION

---

Caves within the Leeuwin Naturalise ridge are classified in three broad categories. They are:

- \* Tourist Caves
- \* Adventure Caves
- \* Restricted Access Caves

Each category has different access guidelines. This plan focuses on access to Adventure and Restricted caves.

- **Tourist Caves**

These commercial caves are on land vested with the local tourist bureaux. The bureaux are responsible for the daily management of Mammoth, Lake, Jewel, and Yallingup caves.

- **Adventure Caves Class I**

These caves are suitable for inexperienced people wanting to undertake a caving experience at their own discretion and pace. The caves selected for this purpose are based on their historic high use, and their relative safety, including safe entry and easy passages.

Entrance to this category is free (apart from general park entry fees) provided the users' register is signed and safety rules are followed. Donations will be encouraged to assist with the maintenance of each cave.

- **Adventure Caves Class II**

These caves are non-vertical caves that offer more of a challenge than the Class I caves. People wishing to enter these caves can only do so with an approved trip leader and an entry permit. A fee applies for entry to this category of cave.

- **Adventure Caves Class III**

These caves are vertical entry caves. Approved trip leaders competent in roping and ladder techniques must accompany groups. A cave entry permit is required and a fee must be paid.

- **Adventure Caves Class IV**

These caves are commercially managed, leased by private parties for a fixed term under strict conditions governing acceptable management practices. Entry to caves in this category do not require a permit from CALM. However, approval is required from the commercial operator.

- **Restricted Access Class I - Wild Caves.**

This category includes the majority of caves. At the present time (May 1992) most are poorly documented or cannot readily be classified in other categories. All newly discovered caves or extensions to known caves will be initially placed in this category. The

management objective for this category is to investigate all of the caves' values so that future re-classification is based on detailed resource knowledge.

- **Restricted Access Class II - Dangerous Caves.**

These caves are known to be hazardous. Access to some of these caves may be banned to protect human life. Access to others will only be to very skilled people who have a good reason for entry.

- **Restricted Access Class III - Reference Caves.**

This category protects relatively undisturbed caves that will act as baseline sites for monitoring. Reference caves will represent wider classes of sites.

- **Restricted Access Class IV - Scientific Caves.**

Caves in this category are set aside because of their special relevance to scientific study.

- **Restricted Access Class V - Wilderness Caves.**

These caves are not open for use under the permit system because they have passages longer than 5km in length, are infrequently visited, have very limited track markings and have delicate or unusual formations.

- **Restricted Access Class A - Locked Caves.**

These caves are listed separately because they require special approval to gain access. All locked caves are accessible only if a trip is approved by the Caves Access Committee (CAC). The CAC comprises two members of the two speleological clubs affiliated with the Australian Speleological Federation (ASF) and a CALM representative. Locked caves can belong to any of the category of caves listed, which would then be designated Class IA, IIA, etc.

### 3. ACCESS

---

#### ADVENTURE CAVES CLASS I

##### Objectives

- Provide safe caving experiences for beginners.
- Provide access to caves for groups of up to 20 people.
- Ensure the values of the caves are maintained.
- Provide a unique recreation experience.

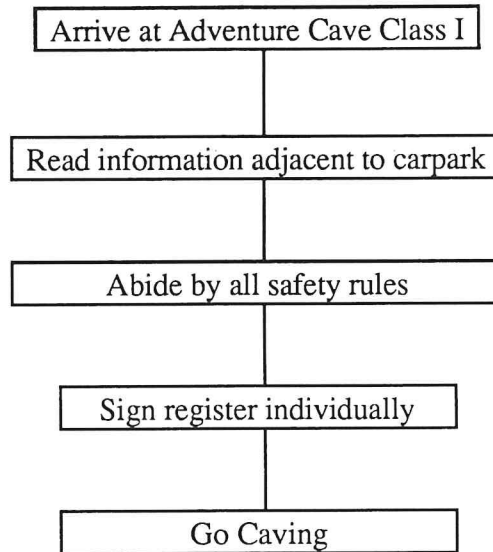
##### Access

- Sign the users' register at the entrance of a cave.
- Free entry.

## Management

- Display safety standards at all cave entrances.
- Display the rules of entry at entrances.
- Monitor visitor impacts to detect cave deterioration.
- Install donation boxes at cave entrances to raise revenue for cave management and research.

## Procedure



For caves in this category see Appendix V, page 14.

## ADVENTURE CAVES CLASS II AND III

### Objectives

- Provide the public with the opportunity for aesthetic appreciation of caves in this category.
- Provide access to caves that are more testing than those chosen in category Adventure Caves Class I.
- Provide a safe caving experience.
- Raise revenue for ongoing maintenance and research.
- Control the number of users to maintain cave values.

### Access

- Permits to enter caves in this category are available from the Margaret River Tourist Bureau.
- All cave tours (trips) need an authorised trip leader.
- Sign register at entrance of caves.

### Fees

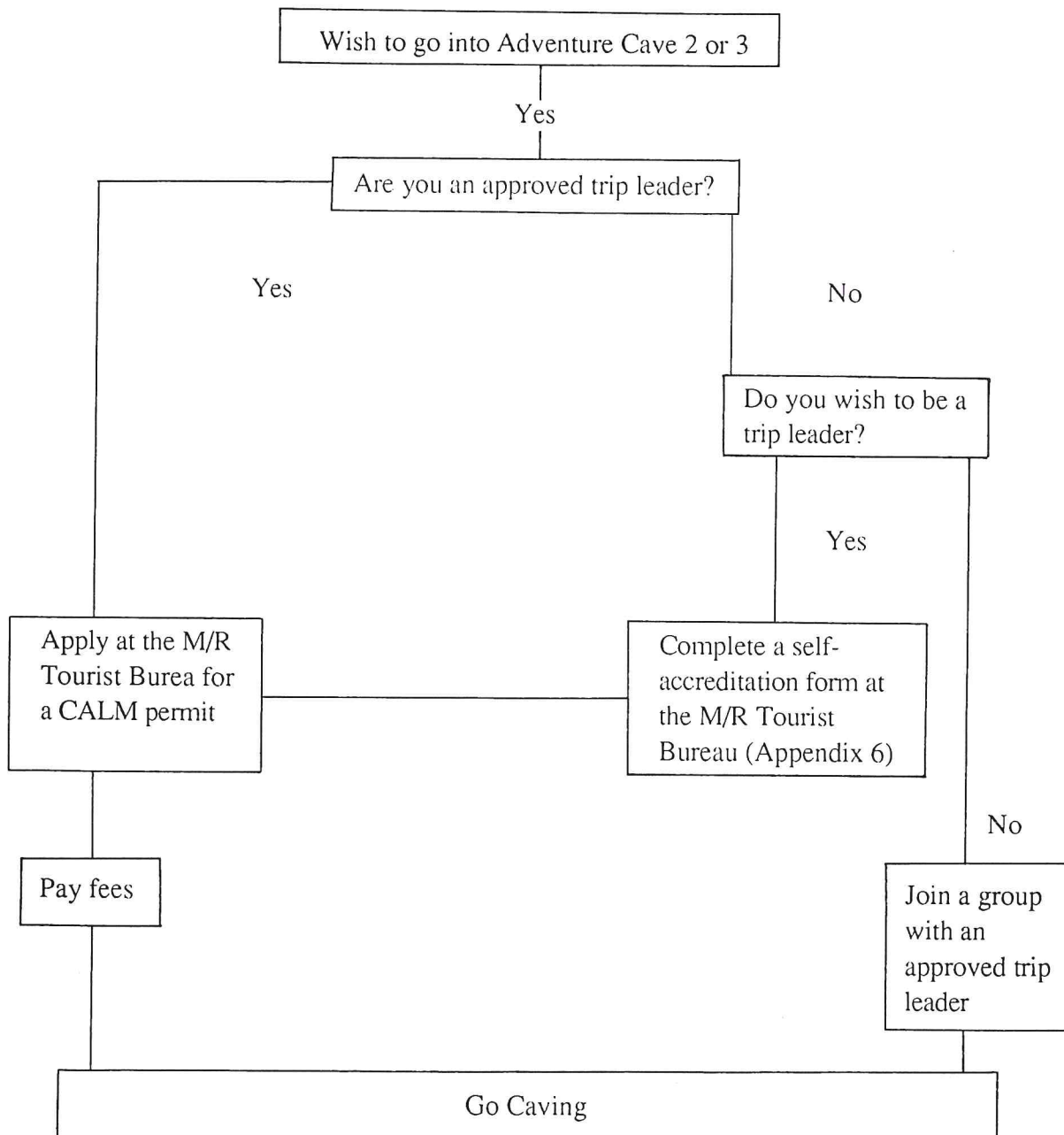
Fees of \$2 a head for each visit to each cave are payable in advance to the Margaret River Tourist Bureau. Alternative arrangements can be made for commercial operators.

- Fees of \$1 a head for each visit to each cave is payable if bookings are made two weeks in advance to ensure the availability of a particular cave.
- A non-refundable deposit of \$5 is payable when booking in advance which is deducted from the cost of the visit. The balance must be paid on or before the day of the trip.

## Management

- Bookings and the issuing of permits is administered by the Margaret River Tourist Bureau.
- Make trip leader accreditation available on request. (See appendix V1).
- Install notices at the entrances of caves in this category to remind people that a permit is needed before entering.
- Display safety standards at cave entrances.
- Monitor visitor impacts and cave deterioration.
- Review access to caves that are subject to deterioration.

## Procedure



For caves listed in this category see Appendix V, page 14.



## ADVENTURE CAVE CLASS IV

*(At the time of the release of this document no caves have been classified as Class IV)*

### Objectives

- Provide recreation opportunities and aesthetic appreciation of caves in controlled groups.
- Raise revenue for cave rehabilitation.
- Provide better protection to heavily used adventure caves.
- Increase user awareness of the values of caves.

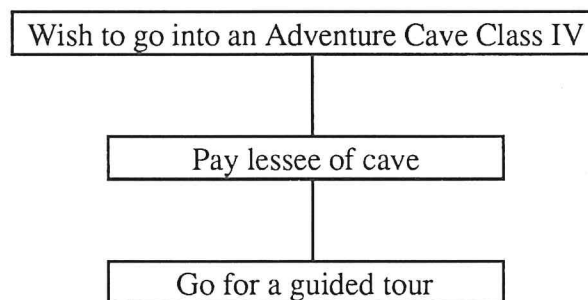
### Access

- Available to any individual or group under the guidance of the lessee.
- Pay a fee to the lessee.

### Management

- Use funds received from the lessee to rehabilitate Class IV caves.
- Evaluate the benefits or otherwise of the lease when it expires. Consider -
  - Positive and negative impacts on any leased cave
  - Negative impacts on other caves as a result of leased caves not being open to the public
  - Public response to the leasing of caves.

### Procedure



## 4. ACCESS: RESTRICTED ACCESS CAVES CLASS I-V

---

### Objectives

- Reserve caves that are representative of the various types of caves found in LNNP.
- Ensure that visits to caves listed as restricted access are under the guidance of experienced speleologists.

### Access

Restricted access caves are either locked or unlocked caves; both require an entry permit. Currently no fee applies to enter these caves.

## **Management**

### **A. Locked Caves**

Some of the restricted access caves have been locked for a variety of reasons, largely by speleological clubs. The existing system for access requires an application to the Cave Access Committee (CAC) with a trip proposal. The trip leader needs to lodge a \$5 application fee with the CAC to cover costs. The CAC recommends to CALM whether a permit should or should not be issued.

An approved trip leader is a person who is either a member of a WA Speleological Club affiliated with ASF or is an individual member of ASF.

An approved trip is one where at least three CAC members approved a proposed trip. The trip leader is evaluated by his peers based on their knowledge of his experience, his ability to organise a trip, and whether the trip satisfies the purpose for which the cave has been allocated.

Access to locked caves is restricted to a handful of trips each year. Records of all trips are kept by CALM as are details of why the trips were undertaken and any results.

Locked caves cover all categories and are indicated by an asterisk on any listing (see Appendix V, page 14). The CAC for the LNNP is preparing a policy for CALM's endorsement on when a cave should be locked. Historically caves have been locked on an opportunistic basis. The status of all locked caves will be reviewed.

### **B. Unlocked Caves**

Unlocked restricted access caves are available to any groups who have an approved trip leader.

An approved trip leader for the category is similar to locked caves, or is someone who has successfully completed a written and practical course set up by CALM through the CAC.

A trip leader will be an experienced person who is interested in taking groups through a cave for a specific purpose.

## **TRIP LEADER TESTING**

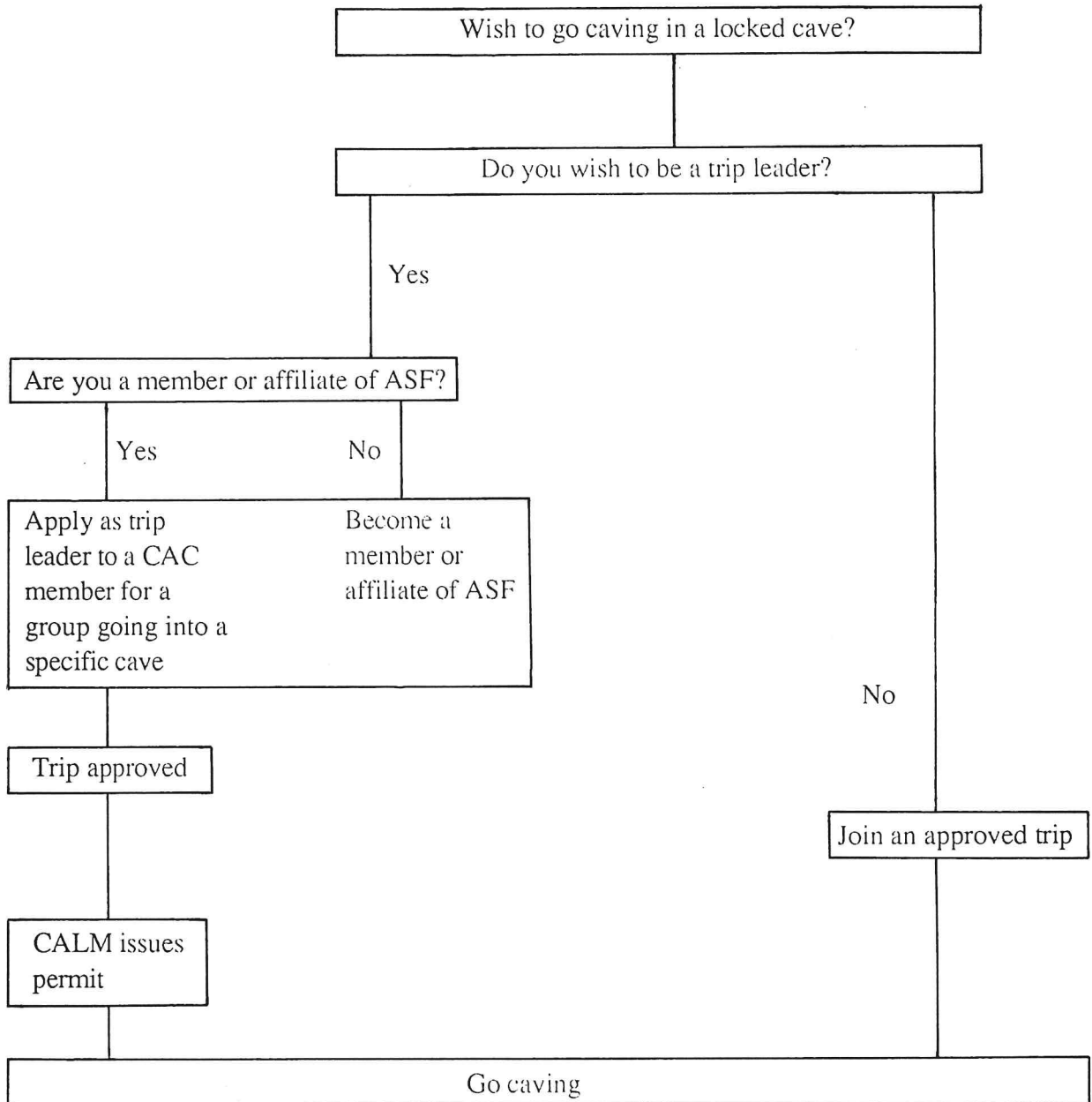
**Theory:** Applicants will be asked to complete one of several alternative papers designed to test the depth of knowledge, safety, and other matters. Theory tests will be run by CALM three times a year. Guidelines on the scope of these tests will be available on request.

**Practical:** Persons who successfully complete the theory paper will need to complete practical task for an examining panel, drawn from a wide source of experienced WA cavers. Membership of the Examining Panel will be rotated periodically but selected by the Cave Advisory Committee for the Leeuwin-Naturaliste National Park on behalf of CALM.

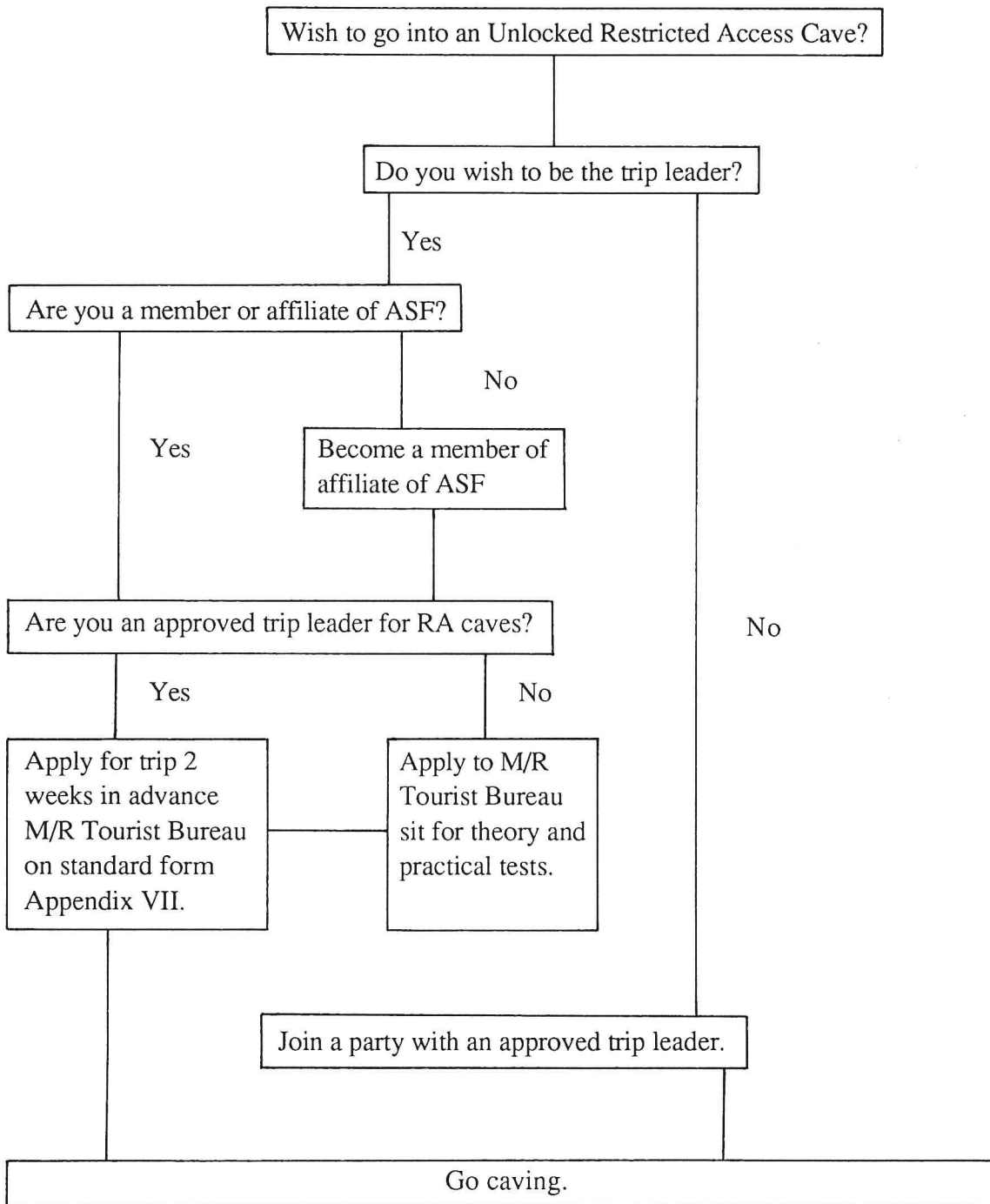
Persons under 18 years old will not be granted trip leader status. Approved trip leaders for R.A. category need to apply to the Margaret River Tourist Bureau for access.

An annual fee is payable to CALM by each speleological club at the rate of \$20 per club.

## PROCEDURE A. LOCKED CAVES



**PROCEDURE B. UNLOCKED CAVES**



## APPENDIX I. CAVE MANAGEMENT COMMITTEE

(As at May 1992. Members of Advisory Committee must retire every three years but can nominate for another term)

Mr Neil Taylor  
North Boyanup Road  
BUNBURY WA 6230  
Home Phone No. (097) 55 2189  
Work Phone No. (097) 25 4300  
Fax No. (097) 25 4351

CALM  
Secretary/Chairman

Mr Rob Klok  
C/- CALM  
MARGARET RIVER WA 6285  
Home Phone No. (097) 55 5324  
Work Phone No. (097) 57 2322  
Fax No. (097) 52 1135

Cave Ranger LNNP

Mr Norm Poulter  
PO Box 120  
NEDLANDS WA 6009  
Home Phone No. (09) 276 2495  
Work Phone No. (09) 380 2766  
Fax Electron Microscopy Centre (09) 380 1014

Member of SRG WA

Mr Rauleigh Webb  
428 Charles Street  
NORTH PERTH WA 6006  
Home Phone No. (09) 386 7782  
Work Phone No. (09) 333 4444  
Fax No. (09) 333 4499

Member of WASG

Mr Keith Tritton  
Manager, Tourist Bureau Margaret River  
PO Box 171  
MARGARET RIVER WA 6285  
Home Phone No. (097) 57 2338  
Work Phone No. (097) 57 2147

Manager, Margaret River  
Tourist Bureau

Terry Hewett  
862 Hay St  
PERTH WA 6000  
Work Phone No. (09) 322 4555

Commercial Operator

Peter Wood  
RMB 100  
KARRIDALE WA 6288  
Home Phone No. (097) 58 5555

Local Caver

John Cugley  
15 Montreal Rd  
MIDLAND WA 6056  
Home Phone No. (09) 274 6591

Scout Association

Murray Thomas  
8 Aston Court  
CARINE WA 6020  
Home Phone No. (09) 388 3834

School Groups

**Caving Emergencies**

Margaret River Police Station - (097) 57 2222

Conservation and Land Management (CALM)

Busselton District Office	Tel: (097) 52 1677	During normal
Margaret River Office	Tel: (097) 57 2322	business hours.
Cave Ranger (Rob Klok)	Tel: (097) 55 5324	During normal hours or emergencies.

**Information Contacts**

Margaret River Tourist Bureau Tel: (097) 57 2911  
(For Permit Bookings) Fax: (097) 57 3287

Australian Speleological Federation Inc.  
PO Box 388  
BROADWAY WA 6007

Speleological Research Group of WA  
PO Box 120  
NEDLANDS WA 6009  
Tel: (09) 276 2495

West. Australian Speleological Sub-Group  
c/- Keith Tritton  
PO Box 171  
MARGARET RIVER WA 6285

Environmental Protection Authority - Cave Working Group.  
Contact EPA Perth - (09) 222 7000

Australian Cave and Karst Management Association (ACKMA)  
c/- Keith Tritton, Margaret River Tourist Bureau.

Cave Access Committee (Note: this is the current membership as at May 1992):

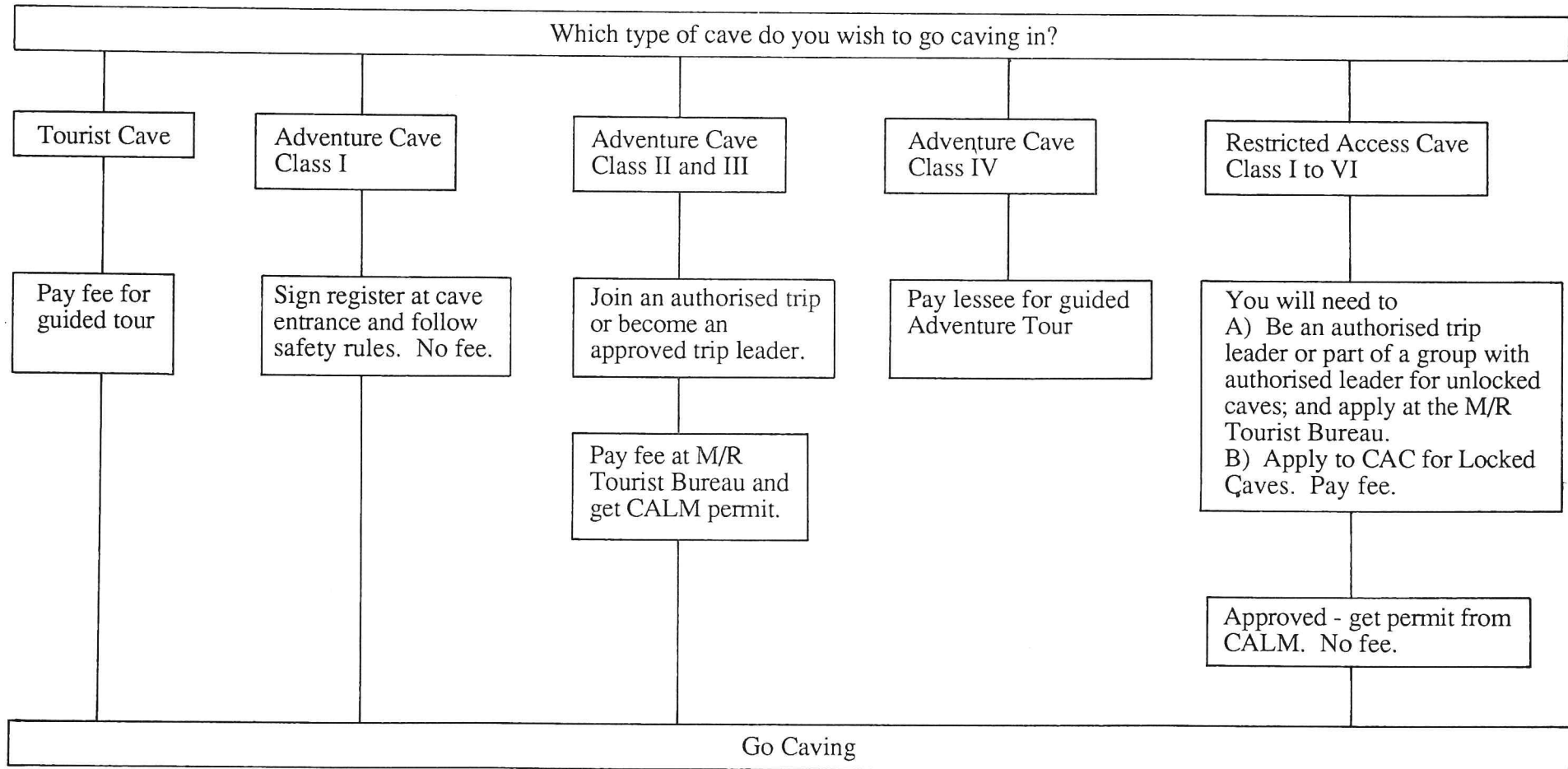
1. Mr Lindsay Hatcher (Chairman) (09) 445 2464
2. Norm Poulter (09) 276 2495
3. John Laurence Norris Drive, Forrestfield
4. Barry Tibbenham (09) 478 3596
5. Rob Klok c/- CALM, Margaret River (097) 57 2322 or  
Home in emergencies (097) 55 5324

Classification of Caves	CALM Permit Required	Leadership Requirements	Obtaining Leadership	Entry Fees \$	Access by Commercial Operators	CALM Auth. Trip Leader Required
Tourist Caves	No			Set by Tourist Bureau	Yes	No
Adventure Caves Class I	Yes Self Registration Permit completed by user at cave entrance	Recommended that an experienced caver lead the group	No requirements	Donation box on site encouraging \$2/head. No formal fees	Yes CALM charges commercial operators an annual licence fee	No
Adventure Caves Class II and III *	Yes Cave permit if by application to Margaret River Tourist Bureau	Approved trip leader required for each group	Apply at Margaret River Tourist Bureau for Accreditation Form	\$2/head/cave discounted to \$1/head/cave if booked 2 weeks in advance	Yes (Providing group sizes are abided by and CALM permit obtained)	Yes
Adventure Caves Class IV	No Concessionaire approves of users, subject to leave conditions	Yes Provided by lessee	Yes Provided by lessee	Set by Concessionaire ***	Yes	Yes
Restricted Access Class I - V	Yes Permit issued by CALM if approved by CAC	Approved trip leader required for all RA Caves	Apply at Margaret River Tourist Bureau	None at this point in time **	No	Yes

- \* Persons applying for a permit into these caves are required to do so two weeks in advance. Applications can be in person or in writing. The permit will be sent out by mail only if correct payment has been made in advance. All correspondence must be through the Margaret River Tourist Bureau. Caves can be booked on the day provided the higher fee is paid.
- \*\* Entry into the Restricted Access Caves Class I to V must be with approved trip leader.
- \*\*\* CALM approves fee schedule set by concessionaire.

APPENDIX IV.

FLOW CHARTS FOR CAVING WITHIN THE LNNP





## APPENDIX V. ADVENTURE CAVES

	Max. No. People/Trip	Max No. Trips/Week
Adventure Caves Class I		
Tunnel Cave	20	No Limit
Giants Cave	20	No Limit
Northcote Grotto Cave	20	No Limit
Calgardup Cave	20	No Limit
Adventure Caves Class II		
Golgotha Cave	10	4
Nannup Cave	6	2
Block Cave	6	2
Quinninup Lake Cave	6	1
Mordang Dar Cave	6	2
Terrible Cave	10	2
Adventure Caves Class III		
Brides Cave	20	10
Mill Cave	10	2
W.I. 16	20	10
Dingo Cave	6	2
Arumvale Pipe	6	4
Blackboy Hollow Cave *	6	4

Note: \* Indicates locked cave, key will need to be collected once permit paid for.

### RESTRICTED ACCESS CAVES (Examples only)

Restricted Access Class I	W.I. 69 Cave
Restricted Access Class II	Bulldozer Cave
Restricted Access Class III	Oops-it-Hurt Cave
Restricted Access Class IV	Devil's Lair Cave
Restricted Access Class V	Easter Cave

**APPENDIX VI. ADVENTURE CAVES TRIP LEADER**

No fee is attached to this application

	YES	NO	YEARS
I have been a member of a caving party in adventure caves before .... (See over)	.....	.....	.....
I have led trips into adventure caves before..(See over)	.....	.....	.....
I have a current First Aid Certificate Type ..... Year Obtained..... State.....	.....	.....	.....
I am aware of hazards to be found in caves such as loose rocks, CO <sub>2</sub> , complex passages etc, and that cave entrance can be especially dangerous.	.....	.....	
I am aware that I will be responsible for the well being of any cave that I or my party visit and including decoration, fauna and its habitat and keeping to marked or obvious trails where applicable.	.....	.....	
I am aware of what procedures should be followed in the case of an injury to a member of a party that I am leading.	.....	.....	
I am aware that I should notify a reliable person to raise the alarm if I or my party fail to return by a prescribed time from a nominated cave.	.....	.....	
I agree that I and my party will abide by any conditions of entry to caves that may be imposed by CALM from time to time.	.....	.....	
I have the necessary equipment and training to safely conduct trips into vertical entrance caves. (See over)	.....	.....	

SIGNED: ..... DATE: ..... Trip Leader  
 No: ..... Horizontal / Vertical

NAME (please print): ..... AGE: .....

ADDRESS: .....

**CAVE TRIP LEADER - carry on all authorised trips**

NAME: ..... Trip Leader  
 No:..... Horizontal / Vertical

ADDRESS: .....

Administrative enquiries: Weekdays 9am - 5pm, R Klok, CALM  
 via Margaret River Office - (097) 57 2322

Administrative enquiries: Weekends 9am - 5pm,  
 Margaret River Tourist Bureau Inc. (097) 57 2911

Emergencies: Margaret River Police - (097) 57 2222

## TRIP LEADER SELF-ACCREDITATION

1. I have been a member/leader of a caving party in adventure caves before.  
Where have you gained caving experience?

.....  
.....

2. I have led trips into adventure caves before.  
How long have you been leading trips and where in WA? .....

3. I have the necessary equipment and training to safely conduct trips into vertical entrance caves.  
How much training have you received relating to caving ladders and from whom?

.....  
.....

How much training have you received relating to abseiling (or SRT) and from whom?

.....  
.....

What vertical equipment do you possess or have access to?

.....  
.....

Issued by the Margaret River Tourist Bureau on behalf of the Department of Conservation and Land Management, Queens Street, Busselton WA 6280.

Speleological information enquiries.	
Australian Speleological Federation Inc.	PO Box 388, Broadway WA 6007
Speleological Research Group W.A.	PO Box 120, Nedlands WA 6009 Tel. (09) 276 2495
West. Aust. Speleological Group Inc.	PO Box 67, Nedlands WA 6009 Tel. (09) 386 7782
West. Aust. Speleological Sub-Group	c/- Keith Tritton PO Box 171, Margaret River WA 6285 Tel. (097) 57 2911

**APPENDIX VII. APPLICATION FOR A CAVE PERMIT**

Margaret River Tourist Bureau

Office: Tel: (097) 57 2911

**A. General Information**

- 1. This application form is for Adventure Caves Class II and III, and unlocked Restricted Access Caves.
- 2. This application only applies to Caves within the Leeuwin Naturaliste National Park.
- 3. The Margaret River Tourist Bureau issues Permits on behalf of CALM.
- 4. Fees are non-refundable.

**B. Applicant Details**

Trip Leader Details (must be 18 years old plus)

Trip Leader (Please include name and address, telephone no., affiliation, commercial operator and D.O.B. Must be 18 years or older).

NAME: .....

ADDRESS: .....

TEL: .....

COMMERCIAL OPERATOR: YES / NO D.O.B.: / /

CLUB / AFFILIATION:

.....

Names of other Party Members (Asterisk Co-leaders)

Experience Level Rating (see below)

.....

.....

.....

.....

.....

Experience Level Rating

0 First caving trip

1 Some local experience

2 Extensive local experience

3 Extensive WA experience

4 Experience in other States

5 International and WA experience

6 Only International experience

Person to Contact in Emergency (Name, address and telephone)

.....  
.....

**C. Destination(s)**

Cave Name(s)	Trip Date	Time (am/pm)
--------------	-----------	--------------

.....	.....	.....
.....	.....	.....
.....	.....	.....
.....	.....	.....
.....	.....	.....

**D Statistics**

1. How did you find out about the Permit System?

.....

2. Briefly describe the purpose of your visit.

.....

3. Any other comments.

.....

**APPENDIX VIII**

**CAVE PERMIT  
LEEUEWIN NATURALISTE NATIONAL PARK**

**IMPORTANT**

- Notes: 1. This permit should be carried by the trip leader on his/her person at all times. The bottom section should be torn off and displayed on the dash of the trip leaders vehicle. (Please fill in vehicles in party just prior to going caving).
2. This form is validated when signed on behalf of CALM by the Tourist Bureau.
3. Please read the permit conditions (overleaf) carefully before signing this permit.

Cave Locations:      1   2   3   4   5   6

Permitted Cave: .....

Number in Party: .....

Date Entry: .....

AM/PM .....

Trip Leader: (Name and Address) .....

.....

Fee:      \$.....

Permit Number: [A.C. 20001 or A.C. 20001 or R.A. (1234 or 5) 0001] .....

Signed for Executive Director : .....      Date:      /      /

=====

Permit Number: .....

**ALL VEHICLES IN THE PARTY**

MAKE	COLOUR	REGISTRATION
.....	.....	.....
.....	.....	.....
.....	.....	.....
.....	.....	.....

## CONDITIONS OF ENTRY

1. Maximum and minimum numbers to be observed.  
Maximum numbers vary (see below) but minimum number is three.
2. A minimum of two reliable light sources per person and the main source of light should be of adequate duration for the cave to be entered.
3. Clothing and footwear should be robust. Helmets are to be worn.
4. Cave formations must not be handled.
5. Any damage in the cave should be reported to the Busselton CALM Office (telephone (097) 52 1677) or the Margaret River Tourist Bureau (telephone (097) 57 2911).
6. Follow obvious or marked trails at all time.
7. Trip leaders are responsible for ensuring fees are paid for all members in the party and that the group conduct their trip in a responsible manner.
8. Special conditions:

## APPENDIX IX.

## FINDERS RIGHTS

Finders Rights were queried in several of the public submissions received. The Cave Advisory Committee thought the issue important enough to include it in an appendix.

Finders Rights cover both the finding of a new cave or finding a new extension to a known cave.

"Rights" have been extended to finders in the hope they will impart the knowledge to CALM as the managing authority as soon as the discovery is made. There can be NO legal claim to discoverers but CALM will acknowledge finders rights and abide by the following guidelines.

1. Finders will be given adequate time to explore new sites before the decision is made to place the cave/extension into the Restricted Access Class I Category.
2. Finders are asked to minimize cave impacts by ensuring:
  - Initial entry is made only if the correct gear and personnel are present.
  - The exploratory party is kept small (maximum four people).
  - Correct equipment and personnel.
  - Mapping must be done concurrently with exploration and track marking.

Finders are reminded that all impacts will be solely attributed to them.

CALM is keen to protect the Rights of the cave and will require regular progress reports on the exploration of new sites.