

West Cape Howe National Park

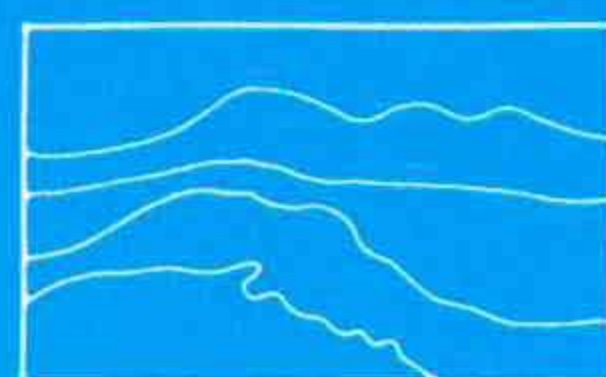
Analysis of Public Submissions



MANAGEMENT PLAN No 28



Department of Conservation
and Land Management



National Parks and Nature
Conservation Authority

WEST CAPE HOWE NATIONAL PARK

ANALYSIS OF PUBLIC SUBMISSIONS TO THE DRAFT MANAGEMENT PLAN

1994

Compiled by Ian Herford

Department of Conservation and Land Management
for
The National Parks and Nature Conservation Authority
Western Australia

PRINTED ON RECYCLED PAPER

CONTENTS

	Page
BACKGROUND	v
NUMBER AND ORIGIN OF SUBMISSIONS RECEIVED	v
REVIEW PROCESS	vi
ELEMENTS OF ANALYSIS TABLE	vi
COMMENTS ON THE DRAFT PLAN...	1
GENERAL COMMENTS	1
KEY ISSUES	2
INTRODUCTION	-
1. Overview	2
2. Regional Context	2
3. Community Involvement in the Draft Plan	2
PRINCIPAL MANAGEMENT DIRECTIONS	-
4. Role of National Parks	3
5. Management Goals for West Cape Howe National Park	3
6. Land Tenure and Park Boundaries	3
7. Zoning	4
CONSERVATION	-
8. Climate	5
9. Geology, Landforms and Soils	5
10. Hydrology	6
11. Landscape	6
12. Flora and Vegetation	7
13. Fauna	7
14. Marine Resources	9
15. Fire	9
16. Plant Disease	14
17. Weeds	16
18. Feral Animals	17
19. Rehabilitation	17
20. Aboriginal History and Cultural Resources	18
21. European History and Cultural Resources	18

	Page
RECREATION	18
22. Attractions and Existing Use	19
23. Access	19
24. Day Use	24
24.1. Sightseeing and Photography	24
24.2. Picnicking	25
25. Camping	25
26. Nature Observation	31
27. Water-Based Recreation	31
27.1. Recreational Fishing	31
27.2. Surfing	32
27.3. Boating	32
27.4. Diving	33
28. Adventure Activities	33
28.1. Bushwalking	33
28.2. Rock-climbing	36
28.3. Hang Gliding	37
29. Model Aeroplane Use	38
30. Motorised Recreation	38
31. Horse Riding	39
32. Pets	43
33. Recreational Facilities	44
34. Visitor Safety	48
 COMMUNITY RELATIONS	 49
35. Information, Education and Interpretation	49
36. Educational Groups	50
37. Liaison and Community Involvement	50
 COMMERCIAL AND OTHER USE	 -
38. Commercial Visitor Services	51
39. Commercial Fishing	51
40. Gravel and Industrial Minerals	56
41. Mineral and Petroleum Resource Development	57
42. Other Commercial Resource Utilisation	58
43. Group Training	58
 RESEARCH AND MONITORING	 -
44. Research and Monitoring.	58

	Page
IMPLEMENTATION	59
45. Management Priorities	59
46. Staffing	59
47. Funding	60
 REVISION	 -
48. Term of this Plan	61
49. Evaluation	62
50. Updating	62
 REFERENCES	 -
 APPENDIX 1 - LIST OF SUBMITTORS	 63

BACKGROUND

This document summarises submissions to the Draft Management Plan (DMP) for West Cape Howe National Park. The Draft Plan was released for public comment on August 22nd, 1992, by the Chairman of the National Parks and Nature Conservation Authority, Professor Arthur McComb. The Plan was available for comment for a period of three months to November 1992 (including a one month extension), however if the Department had been notified before the closing date, late submissions were accepted. All submissions have been summarised and changes made to the Plan where appropriate.

The Plan was distributed to Government agencies, tertiary institutions, conservation and recreation groups, Local Authorities, and individuals. In addition, copies of the Plan were available for purchase from Departmental offices and were available for viewing at public libraries, the offices of the Town of Albany and the Shires of Albany and Denmark and offices of the Department.

After release of the Plan, advertisements were placed in the Government Gazette as well as local and state newspapers, advising that the Plan was available for public comment. In addition, articles featuring aspects of the Plan appeared in several newspapers and television and radio coverage was given to the Plan. Letters advising of the Plan's availability were also sent direct to numerous individuals and organisations.

NUMBER AND ORIGIN OF SUBMISSIONS RECEIVED

A total of 66 submissions was received. All of these were substantive submissions.

A breakdown of submissions is as follows:

Origin	Number	Percent
Community - individuals	26	39
Community - clubs or organisations	19	29
Government Agencies	10	15
Industry/business	4	6
CALM staff	7	11
Total	66	100

A list of submitters to the West Cape Howe National Park Draft Plan is given in Appendix 1.

REVIEW PROCESS

Submissions to the West Cape Howe National Park Draft Plan were reviewed in three stages:

- (A) As submissions generally commented on more than one Section of the Draft Plan, the comments were summarised and allocated to the relevant Sections of the Plan.
- (B) The summarised comments were analysed according to a set of criteria.
 1. The Draft Management Plan was amended if a submission:
 - (a) provided additional resource information of direct relevance to management;
 - (b) provided additional information on affected groups of direct relevance to management;
 - (c) indicated a change in (or clarified) Government legislation, management commitment or management policy;
 - (d) proposed strategies that would better achieve management goals and objectives; or
 - (e) indicated omissions, inaccuracies or a lack of clarity.
 2. The Draft Management Plan was not amended if a submission:
 - (a) clearly supported the draft proposals;
 - (b) offered a neutral statement or no change was sought;
 - (c) addressed issues beyond the scope of the Plan;
 - (d) made points which were already in the Plan or or were considered during Plan preparation;
 - (e) was strongly opposed to other submissions with the existing recommendations providing a preferred management option; or
 - (f) contributed options which were not feasible (generally due to conflict with existing legislation, or Government or Departmental policy).

The analysis process is illustrated in Figure 1 which also indicates what action was taken in cases where the comment did not lead to a change in the Plan, i.e. criteria 2(a), 2(b), 2(c), 2(d), 2(e), and 2(f).

- (C) The DMP was amended where necessary. Minor editorial changes were also made.

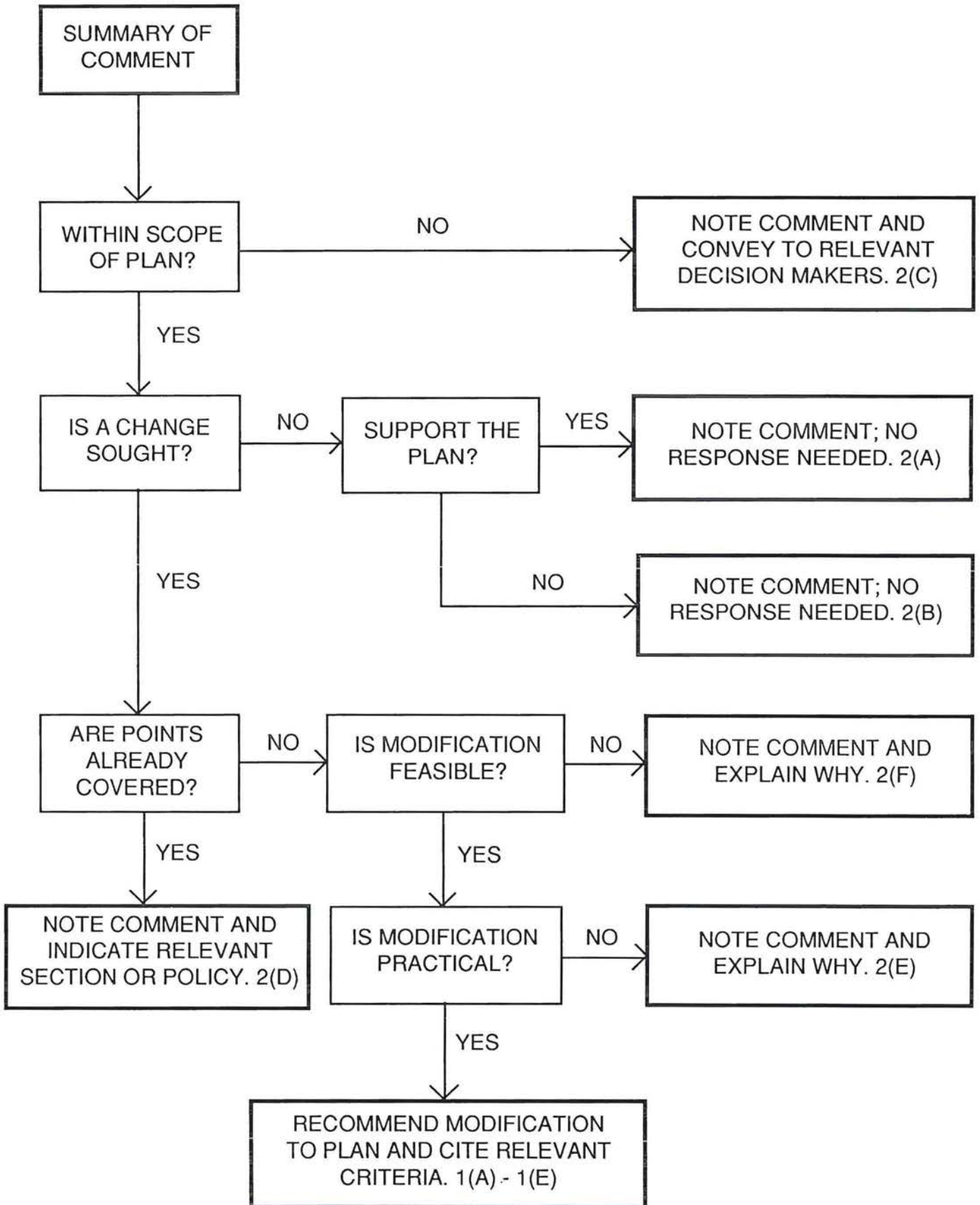
ELEMENTS OF ANALYSIS TABLE

The Analysis Table in this document contains:

- The number of different comments made about each Section of the Draft Plan;
- The number of submissions received making each comment;
- A summary of each comment made on the Draft Plan;
- An indication of what action was taken in the Final Plan, or a discussion on why the comment did not result in an amendment in the Final Plan;
- An indication whether or not the comment resulted in an amendment to the Final Plan;
- The criterion (abbreviated as "Crit." in the Table) by which each comment was assessed.

FIGURE 1

ANALYSIS PROCESS



No	Number of Submissions and Summary of Comment on Draft Management Plan (DMP)	Discussion / Action Taken in Final Management Plan (FMP)	Am- end?	Cr- it.
	General Comments			
1	1 Complimented CALM on the preparation of the DMP which will help to resolve some long-standing problems.		No	2b
2	1 Supported the findings of the DMP.		No	2a
3	4 Complimented the quality of the DMP.		No	2a
4	2 Commended the comprehensive and thorough nature of the Plan.		No	2b
5	2 Suggested CALM consider a refundable deposit on return of a Draft Management Plan with a submission.	Copies of Draft Plans are made available for inspection at no cost at CALM offices and public libraries.	No	2c
6	1 Believed the Plan to be well presented and thorough and supported its proposals.		No	2a
7	2 Believed the Plan to be an excellent document.		No	2b
8	1 Supported in principle the need to establish guidelines to ensure the Park is preserved for future generations and commended CALM on its open approach in seeking public comment.		No	2b
9	1 Expressed the view that CALM has a very difficult job and on the whole, does have the interests of the environment, the community and the future in mind.		No	2b
10	1 Would like to see the Park protected but also available for continued sensible use.	The Actions in the Plan are designed to achieve such a balance.	No	2d
11	1 Maintained that without management on the scale proposed in the DMP there is little point in WCH remaining a national park.	This is addressed under <i>Implementation</i>	No	2d
12	1 Found the DMP to be a well prepared document and agreed with the majority of its recommendations.		No	2a
13	1 Found the DMP to be a considered approach to management of the Park and generally supported its recommendations, particularly those which aim to maintain or enhance wilderness values.		No	2a
14	1 Was impressed by the detail in the Plan and felt that all aspects of management had been covered.		No	2b
15	1 Found the Plan to be an encouraging and comprehensive document.		No	2b
16	1 Welcomed the release of the DMP.		No	2b

No	Number of Submissions and Summary of Comment on Draft Management Plan (DMP)		Discussion / Action Taken in Final Management Plan (FMP)	Am- end?	Cr- it.
17	1	Believed WCHNP can and should be managed in a manner benefiting flora, fauna and the recreational requirements of humans.	See Comment 10, this Section.	No	2d
18	1	Strongly supported the general tenor of the DMP and stated that it fits well into the network of other national parks in the surrounding area.		No	2a
19	1	Found the layout of the document easy to follow and the linking of recommendations to the CALM South Coast Regional Plan logical and valuable.		No	2b
Key Issues					
1	1	Found the omission of the proposed coastal footpath from this Section surprising as it is a major enterprise with substantial dieback risks.	Specific mention of the proposed path has been added to <i>Key Issues</i> .	Yes	1e
1. Overview					
1	3	Agreed with the statements in this Section.		No	2a
2. Regional Context					
1	2	Agreed with the statements in this Section.		No	2a
2	1	Had some difficulty matching some of the proposals in the DMP with the "low key" objective for the Park.	The term "low key" has been clarified in the text.	Yes	1e
3	1	Pointed out that national parks rarely fall into neat categories as suggested in the Regional Management Plan, there being a number of exceptions to the level of development in the different park "types". The submission suggested that the planning in the DMP has been constrained by the "Type B" guidelines ("low key or intermediate parks").	See Comment 2, this Section.	Yes	1e
4	2	Strongly supported the "low key", minimum facility, minimum impact theme in the Park.		No	2a
3. Community Involvement in the Draft Management Plan					
1	1	Expressed pleasure with the outcome of the workshop held in 1989.		No	2b
2	2	Agreed with the statements in this Section.		No	2a

No	Number of Submissions and Summary of Comment on Draft Management Plan (DMP)	Discussion / Action Taken in Final Management Plan (FMP)	Am-end?	Cr-it.
3	1 Stated that while there were reasonably comprehensive attempts to seek community input, public perceptions of the integrity of the plan will be poor because: <ul style="list-style-type: none"> • only three people comprise the planning team, • there was no Advisory Committee, and • no visitor survey was undertaken. 	The user groups for WCHNP were clearly identified through the process of community consultation described here. "One to one" contact between users and the planning team was seen as the most effective method of obtaining community input in this Plan.	No	2d
4	1 Expressed concern that the planning team would also review public submissions without the assistance of an Advisory Committee.	As with all plans the public submissions will be reviewed by both CALM staff and the NPNCA which is composed of community representatives. The analysis of public submissions will be released as a public document with the Final Plan. See also Comment 3, this Section.	No	2c 2d
	4. Role of National Parks			
1	3 Agreed with the statements in this Section.		No	2a
	5. Management Goals for WCHNP			
1	4 Agreed with the stated goals for the Park.		No	2a
2	1 Supported the conservation goal in this Section.		No	2a
	6. Land Tenure and Park Boundaries			
1	1 Pointed out that the Regional Rural Strategy prepared as part of the Albany Regional Planning Study states that the extension of WCHNP along the coast will be investigated during future CALM planning exercises.	This proposal, put forward by the Department of Planning and Urban Development, will be considered as part of the review of the CALM South Coast Regional Management Plan scheduled for 2002.	No	2c
2	7 Agreed with the recommendations in this Section.		No	2a
3	1 Agreed in principle to the addition of more land for conservation but expressed concern about management problems which would result from the irregular Park boundary. The suggestion was made that these be jointly managed by CALM, Albany Shire and local landowners.	The boundary changes proposed here will enhance the conservation value of the Park without leading to significant management problems. Albany Shire and local landowners will be included in the liaison indicated in FMP Action 5 of this Section.	No	2d
4	1 Found Figure 2 difficult to read and suggested this format not be used in the final plan.	This Figure has been improved in the Final Plan.	Yes	1e
5	3 Supported the addition of blocks A and C to the Park.		No	2a

No	Number of Submissions and Summary of Comment on Draft Management Plan (DMP)	Discussion / Action Taken in Final Management Plan (FMP)	Amend?	Crit.
6	1 Supported the addition of Block C to the Park, stating that it is a fire hazard and needs good firebreaks.	Fire management of Block C (Loc. 3423) is addressed in <i>Fire</i> .	No	2a 2d
7	2 Suggested that if Block B cannot be added to the Park, it should be upgraded to an A Class reserve and managed in sympathy with the Park .	Block B (Loc. 7565) was not proposed for inclusion in the Park because of its low conservation values. Its future status and management will be discussed with Albany Shire.	No	2c 2d
8	1 Disagreed with DMP Rec. 3 suggesting that management control of Blocks A, B and C should be with the Shire of Albany.	There appears to be general support for the addition of Blocks A and C (Locs. 252 and 3423) to the Park in other submissions. CALM will hold further discussions with the Shire of Albany on this issue.	No	2e
9	1 Supported the objective of sympathetic management of adjoining lands and incorporation of other appropriate lands. The submission supported the addition of Block C to the Park but suggested instead of spending money on the purchase of Block A, consideration should be given to purchasing Lot 40 and the lower half of Lot 47 as they contain significant landscape features and forest areas and provide a more favourable boundary configuration.	Block A (Loc. 252) is Crown land and would not require the expenditure of funds for purchase. The possibility of the purchase of private land for addition to the Park has been added to the Final Plan but could only be considered at a fair price from a willing seller. However, funds for land purchases are limited and subject to State-wide priorities.	Yes	1d
	7. Zoning			
1	3 Agreed with the recommendations in this Section.		No	2a
2	1 Agreed with DMP Recs. 1 and 2 in this Section.		No	2a
3	1 Sought clarification of DMP Rec. 3. The submission indicated that it would be supportive if the recommendation meant, for example, separation of horses and vehicle traffic and of walkers and vehicles. It maintained that Figure 3 required a legend for access types.	FMP Action 3 in this Section has been clarified. Specific comments on access by different users are contained in the relevant Sections of the Plan. The legend on Figure 3 has been expanded to indicate access provisions.	Yes	1e
4	1 Suggested zoning is subjective.	The text has been modified to acknowledge this point.	Yes	1e
5	1 Pointed out that it is not only fishermen who need access to the Cape and that sightseers must also be considered in the proposed zones. Fee collection, the submission added, should also be considered.	These issues are addressed in <i>Recreation and Implementation</i> .	No	2d
6	1 Supported the two zone classification but expressed concern about its implementation. The submission believed a "natural environment" zone to be unsuitable for 4WD vehicles and horses.	The small area and configuration of WCHNP as well as management requirements mean that it is not feasible to designate a wilderness area. Access in the Natural Environment Zone will be reviewed at the end of the life of this Plan as indicated in <i>Updating</i> .	No	2d

No	Number of Submissions and Summary of Comment on Draft Management Plan (DMP)		Discussion / Action Taken in Final Management Plan (FMP)	Am- end?	Cr- it.
7	1	Felt that a legend on Figure 3 would help clarify roads, tracks and paths.	The legend on Figure 3 has been expanded to indicate access provisions.	Yes	1e
8. Climate					
1	1	Expressed concern about the possible impacts of DMP Rec. 6.	As any changes are unpredictable, the Plan cannot address this issue in more detail.	No	2d
2	3	Agreed with the recommendations in this Section.		No	2a
3	1	Suggested that DMP Rec. 1 should read "Locate and design management tracks..."	Mention of management tracks has been added to the text, though FMP Action 1 refers to all tracks.	Yes	1e
4	1	Believed DMP Rec. 3 to be of particular management importance.		No	2a
5	3	Sought a change in DMP Rec. 3 to remove the word "warm" as dieback disease can spread in moist soil of any temperature.	The FMP Action has been modified to acknowledge this fact.	Yes	1e
6	1	Agreed with DMP Recs. 1-4 and 6.		No	2a
7	1	Queried whether DMP Rec. 5 referred to pre-suppression activities and stated that fire suppression obviously relates to prevailing conditions.	The FMP Action refers to both pre-suppression and suppression activities. This has been clarified.	Yes	1e
8	1	Supported DMP Rec. 3 in this Section.		No	2a
9	1	Agreed with DMP Rec. 1 in this Section.		No	2a
9. Geology, Landforms and Soils					
1	1	Suggested that the source document for Figure 4, "Geology and Erosion Potential" be acknowledged.	This has been added.	Yes	1e
2	6	Agreed with the recommendations in this Section.		No	2a
3	1	Found Figure 4 difficult to interpret because of the amount of information presented.	The Figure has been simplified by the removal of information on erosion potential. This is now covered in the text.	Yes	1e
4	1	Expressed concern about dieback status and potential spread in the implementation of DMP Rec. 2.	This issue is covered in the Actions in <i>Plant Disease</i> and <i>Access</i> .	No	2d

No	Number of Submissions and Summary of Comment on Draft Management Plan (DMP)	Discussion / Action Taken in Final Management Plan (FMP)	Amend?	Crit.
5	1 Sought the preservation of Dunsy Head as it is.	The Actions in the Plan are designed to protect the natural values of the Park.	No	2d
6	1 Agreed with DMP Rec. 3, but wanted tracks to various parts of the cliff top open or capable of being opened for safety and rescue purposes.	The Plan proposes 4WD access close to the cliffs at several locations linked by foot paths, as indicated in <i>Access</i> . This will provide adequate access in emergencies. Degraded tracks will be closed and rehabilitated as indicated in <i>Rehabilitation</i> and <i>Access</i> .	No	2d
7	2 Supported DMP Rec. 2 in this Section.		No	2a
8	1 Agreed with DMP Rec. 4 in this Section.		No	2a
9	1 Found Figure 4 confusing, pointing out that the "erosion potential" is not really defined and bears little resemblance to some of the impacts actually seen in the Park.	See Comment 3, this Section.	Yes	1e
	10. Hydrology			
1	5 Agreed with the recommendations in this Section.		No	2a
2	1 Agreed with DMP Recs. 1-3.		No	2a
3	1 Queried how DMP Rec. 4 will be implemented and by whom.	A separate Research Plan will be developed to detail the nature of the work to be undertaken. As indicated in <i>Research and Monitoring</i> , such work could be carried out by CALM staff, volunteers and others (e.g. tertiary institutions).	No No	2c 2d
4	1 Agreed with DMP Rec. 2 in this Section.		No	2a
	11. Landscape			
1	6 Agreed with the recommendations in this Section.		No	2a
2	1 Maintained that the canopied views within the karri forest at the Park entrance are magnificent and argued that no human alteration by the provision of parking areas or information boards should be allowed there.	Any developments in the area would be carefully integrated into the landscape as indicated in FMP Actions 1 and 2 of this Section.	No	2d
3	1 Agreed with DMP Recs. 1, 2 and 5 in this Section.		No	2a

No	Number of Submissions and Summary of Comment on Draft Management Plan (DMP)	Discussion / Action Taken in Final Management Plan (FMP)	Am- end?	Cr- it.
4	1 Agreed with DMP Rec. 3 where this is possible.		No	2a
5	1 Suggested DMP Rec. 6 be deleted as it is too subjective.	Landscape assessment, using CALM's Visual Resource Management system, is based on principles of design and extensive perception research. The elements listed are essential considerations in development proposals.	No	2d
6	1 Queried whether DMP Rec. 7 refers to all neighbours, believing that the recommendation may not be relevant in all cases.	FMP Action 7 has been modified to clarify its intent.	Yes	1e
7	1 Expressed concern about dieback disease status and potential spread in implementation of DMP Rec. 5.	This issue is covered in <i>Plant Disease and Access</i> .	No	2d
8	2 Agreed with DMP Rec. 5 in this Section.		No	2a
	12. Flora and Vegetation			
1	7 Agreed with the recommendations in this Section.		No	2a
2	1 Sought the immediate initiation of a flora survey for those areas to be patch burnt early in the life of the Plan.	The Park flora and its distribution are already well documented. When resources permit, further survey work will be undertaken as indicated in FMP Action 1(ii).	No	2d
3	1 Pointed out that DMP Rec. 1(i) needs commitment from CALM's Science and Information Division, that responsibility for DMP Rec. 1(ii) must be determined and that DMP Rec. 1(iv) needs commitment from the WA Threatened Species and Communities Unit.	Assistance from CALM staff outside the Region will be required in the implementation of many Actions as indicated in FMP <i>Staffing</i> Action 2.	No	2d
4	1 Stressed that as the karri forest is the only one of its kind in the Shire of Albany and is a spectacular entrance to the Park, it must be managed to maintain it in a healthy state.	The special significance of the Karri forest at the Park entrance is acknowledged elsewhere in the Plan (see for example, <i>Landscape</i>).	No	2d
	13. Fauna			
1	1 Pointed out the existence of another reference covering vertebrate fauna of coastal areas between Busselton and Albany.	The background information to this Section and Table 5 have been amended to include this reference.	Yes	1a

No	Number of Submissions and Summary of Comment on Draft Management Plan (DMP)	Discussion / Action Taken in Final Management Plan (FMP)	Am-end?	Cr-it.
2	1 Questioned the number of vertebrate groups listed in Table 5. In particular, 21 frog species was identified as being too high.	As indicated in the background information, the main source of vertebrate fauna data was a report by Christensen <i>et al</i> (1985). The data reported were from a faunal zone much more extensive than WCHNP itself. Some of the species occurring in the zone may not have been identified within the boundaries of the Park. This has been clarified in a footnote to Table 5.	Yes	1e
3	6 Agreed with the recommendations in this Section.		No	2a
4	1 Mentioned that during late December/January, Golden Gates Beach and the Steps used to be frequented by moulting Fiordland Penguins which took shelter among the rocks on these beaches.	This information will be taken into consideration in Park management activities.	No	2b
5	1 Advised that the limestone ridge between the end of Golden Road and the Lake William Road used to be frequented by Peregrine Falcons.	See Comment 4, this Section.	No	2b
6	1 Mentioned that the eastern end of Lake William was formerly occupied by a tall grove of cedar (<i>Agonis juniperina</i>), much frequented in summer by White-tailed Black Cockatoos.	See Comment 4, this Section.	No	2b
7	1 Advised that the area to the north and east of the Shelley Beach lookout Road used to be frequented by a population of ring-tailed possums. These have disappeared following increased use of the Lookout Road but are believed to persist nearby.	See Comment 4, this Section.	No	2b
8	1 Pointed out the existence of an as yet unnamed trapdoor spider between Shelley and Dingo beaches.	See Comment 4, this Section.	No	2b
9	1 Argued that in view of the existence of eight fauna species declared rare or likely to become extinct or in need of special protection, a comprehensive terrestrial fauna survey should be conducted before the fire management plan or Park zoning are determined.	Ongoing fauna surveys will be conducted as resources permit as indicated in this Section. Changes to management practices in the light of findings are covered by FMP Action 3.	No	2d
10	1 Sought the immediate initiation of a fauna survey for those areas to be patch burnt early in the life of the Plan.	See Comment 9, this Section.	No	2d
11	1 Agreed with DMP Recs. 1-3 and 6 in this Section.		No	2a
12	1 Agreed with DMP Rec. 4 where this is possible within the constraint of not risking broader values.	The FMP Action has been modified to clarify this point.	Yes	1d
13	1 Agreed with DMP Rec. 5 where it is consistent with Departmental priorities.	All such proposals are fully considered within the Department.	No	2a

No	Number of Submissions and Summary of Comment on Draft Management Plan (DMP)	Discussion / Action Taken in Final Management Plan (FMP)	Amend?	Cr- it.
14	1 Pointed out that DMP Recs. 1(i) and 1(ii) need commitment from CALM's Science and Information Division.	Assistance from CALM staff outside the Region will be required in the implementation of many Actions as indicated in FMP <i>Staffing</i> Action 2.	No	2d
15	1 Suggested that priority for DMP Recs. 1(iii) and 1(iv) will be determined at the District, Regional and Departmental level.	All Actions in this Plan are subject to the allocation of priorities as resources permit as indicated in <i>Management Priorities</i> .	No	2d
16	1 Stated that ground parrots (or possibly rock parrots) while not plentiful, can be seen in groups of up to ten from Cosy Corner to Torbay Inlet and for some distance inland. The submission suggested they nest mainly on islands due to feral animal predation on the mainland.	The birds referred to are rock parrots.	No	2b
17	1 Suggested a recommendation covering invertebrate research.	The Actions in this Section include all fauna.	No	2d
14. Marine Resources				
1	7 Agreed with the recommendations in this Section.		No	2a
2	1 Pointed out that DMP Rec. 1(ii) will be covered by a plan for the Albany area.		No	2b
3	1 Queried whether DMP Rec. 1(iv) will be implemented within the life of this Plan.	The timing of implementation of this FMP Action will be depend on many factors outside the scope of this Plan.	No	2c
4	1 Did not wish to see the waters off WCHNP declared a marine park as it is already a proclaimed fishing zone between Forsyth Bluff and Torbay Head and would affect the livelihood of commercial fishers.	The background information to this Section has been amended to indicate that there are various categories of marine reserve, some of which accommodate commercial fishing.	Yes	1e
5	1 Stressed the importance of monitoring marine fauna to ensure the sustainability of populations.	The monitoring of areas outside the Park is beyond the scope of this Plan.	No	2c
6	1 Advocated that Dunsy Head be set aside as a marine park and protected from spearfishing and shell collection.	This is being addressed in a State-wide review of marine reserves.	No	2c
15. Fire				
1	1 Pointed out that the Bush Fires Board will require a five year Operational Fire Management Plan addressing the recommendations in this Section. In addition, the annual works program achieved is to be presented to the Board and Shire Bush Fire Advisory Committee prior to each fire season.	Information will be presented to the Bush Fires Board and Shire Bush Fire Advisory Committee in accordance with Departmental Policies.	No	2c

No	Number of Submissions and Summary of Comment on Draft Management Plan (DMP)	Discussion / Action Taken in Final Management Plan (FMP)	Amend?	Crit.
2	1 Suggested that DMP Rec. 13 should include a caution on the risk of dieback disease spread during prescribed burning operations.	Mention of dieback disease has been added to the FMP Action.	Yes	1a
3	4 Agreed with the recommendations in this Section.		No	2a
4	1 Suggested that the fuel reduction regime recommendation needs to specify how the initial "free-edge" and "patch burns" will be achieved.	These matters are the subject of detailed prescriptions prepared for each burn.	No	2c
5	1 Advised that two fires are known to have been caused by lightning in the Park since 1971.	The background information in this Section has been amended.	Yes	1e
6	1 Suggested that the three rare fauna species mentioned under "Assets within the Park" may be significantly impacted in the short term after large scale fires in the Park.	Mention of this fact has been added to the Section. The Actions in this Section are designed to minimise the likelihood of large scale wildfires in the Park.	Yes	1a
7	1 Agreed with DMP Recs. 1, 2, 4-6, 8, 9, 11-13 in this Section.		No	2a
8	1 Believed that DMP Rec. 3 may be difficult to achieve.	The principles referred to will be accommodated to the greatest extent possible. This has been clarified in the FMP Action.	Yes	1e
9	1 Agreed with DMP Rec. 7 but suggested that campfire debris should be removed from the beach.	The FMP Action has been amended to indicate that containers are to be used for beach fires and debris removed.	Yes	1e
10	1 Supported DMP Rec. 10 if there is a permanent ranger presence in the Park.	The appointment of a permanent ranger is a high priority as indicated in FMP <i>Staffing</i> Action 1.	No	2d
11	1 Sought the addition of two recommendations to this Section. <ul style="list-style-type: none"> • "Carry out all prescribed burning according to conditions set by an approved prescription." • "Develop a prescribed burning program based on the recommendations of this Plan. Review the Plan annually and present the results to the relevant Bushfires Advisory Committee meeting." 	These matters are covered by Departmental Policies.	No	2c
12	2 Disagreed with the inclusion of the karri forest at the Park's eastern entrance within the proposed fuel reduction strip as karri is so limited in this area.	The proposed northern boundary buffer has been modified to minimise impact on the karri whilst ensuring adequate protection. (See Figure 6).	Yes	1d
13	2 Felt that the fuel reduced buffer on the northern boundary of the Park should be burnt equally on each side of the boundary and that costs should be equally shared with Park neighbours.	Sharing of responsibility and resources are covered in FMP Action 1(v) of this Section.	No	2d
14	1 Maintained that the fire hazards associated with the karri at the eastern entrance deserve special attention.	See Comment 12, this Section.	Yes	1d

No	Number of Submissions and Summary of Comment on Draft Management Plan (DMP)	Discussion / Action Taken in Final Management Plan (FMP)	Amend?	Cr- it.
15	1 Argued that "patch burning" should not be used until more research has been done into methods of controlling this dangerous practice.	All prescribed burning operations entail some risk. This will be considered when detailed prescriptions are drawn up.	No	2c
16	1 Sought the provision of firewood or gas barbecues to prevent damage caused by firewood collection in the Park.	Gas barbecues will be provided at Shelley and Dunsy Beach (see <i>Picnicking</i>). Fire wood must be brought in where fires are permitted. FMP Action 6 of this Section has been modified to make this clear.	No Yes	2d 1e
17	1 Expressed reservations about "patch burning" as it is difficult to implement and often results in uncontrolled fires.	See Comment 15, this Section.	No	2c
18	1 Argued that Spring burns should not be considered due to ample evidence of adverse effects on plant diversity.	This possibility is covered in FMP Action 1(ix) of this Section.	No	2d
19	1 Maintained that further research is needed into the impacts of fire upon the Park ecosystems before any burns are implemented.	Research must take place concurrently with management as indicated in FMP Action 1(ix).	No	2d
20	10 Disagreed with DMP Rec. 6 allowing campfires in the Park. The following reasons were given in submissions (also DMP <i>Camping</i> Rec. 12) <ul style="list-style-type: none"> • firewood gathering leads to destruction of vegetation • increased risk of wildfires • most people will not bring in wood • the demand for containers outstrips supply at busy periods • the potential destruction of flora and fauna from wildfires • most wildfires in the Park have started from campfires • the risk of campfires not being properly under control increases yearly with increased visitor numbers • the initial capital expenditure of installing gas barbecues would be offset in the longer term • the risk of weeds and dieback disease being brought in on firewood • difficulties associated with regulating unauthorised campfires • it is harder to withdraw a privilege than to say "No" at the outset. 	CALM recognises that management problems can result from irresponsible use of campfires in national parks, but is keen to maintain the traditional campfire as part of the bush camping experience. Accordingly, fires are to be permitted on a trial basis at designated campgrounds (except Shelley Beach) in CALM approved containers (such as half 44 gallon drums). Campers must bring their own wood free of soil and seeds and a suitable container and containers and debris must be removed after use. The trial will be monitored for 12 months and extended or abandoned depending on the level of damage determined. The FMP Actions have been amended to indicate this.	Yes	1e

No	Number of Submissions and Summary of Comment on Draft Management Plan (DMP)	Discussion / Action Taken in Final Management Plan (FMP)	Am-end?	Cr-it.
21	4 Disagreed with DMP Rec. 7 allowing beach fires in the Park. The following reasons were given in submissions (also DMP <i>Recreational Fishing</i> Rec. 7) <ul style="list-style-type: none"> • firewood gathering can lead to the destruction of vegetation • most wildfires in the Park have started from campfires • beach fires are impossible to monitor. 	CALM recognises that management problems can result from irresponsible use of beach fires in national parks, but is keen to provide the option for Park users where possible. Accordingly beach fires are to be permitted on Bornholm Beach in CALM approved containers (such as half 44 gallon drums) on a trial basis. Wood free of soil and seeds and a suitable container must be brought into the Park and containers and debris must be removed after use. The trial will be monitored for 12 months and extended or abandoned depending on the impacts determined. Beach fires will not be permitted on other beaches in the Park. The FMP Actions have been amended to indicate this.	Yes	1e
22	1 Objected to the concept of prescribed burns in national parks. The submission accepted that damage can result from severe wildfires but argued that if parts of the Park can burn 3 times in 10 years as stated, then prescribed burns every 5 years will not stop wildfires. Concern was expressed that access requirements for prescribed burning pose a risk of dieback disease spread and suggested minimal prescribed burning on the Park boundary only.	Prescribed burning is considered an essential component of management in order to protect both the Park's resources and its visitors as well as the neighbours. As indicated in FMP Action 1(ix) the impacts of prescribed burning will be monitored and changes made to procedures in the light of findings. FMP Action 15 has been modified to stress the need for dieback hygiene in prescribed burning operations.	No Yes	2d 1a
23	1 Supported DMP Rec. 10 in this Section.		No	2a
24	1 Urged continuing research on the impacts of fire on flora and fauna and adaptation of fire management in the light of research findings and weather conditions.	These matters are covered in FMP Action 1(ix) of this Section.	No	2d
25	1 Agreed with DMP Rec. 2 in this Section.		No	2a
26	1 Supported the No Planned Fire Regime for the given area.		No	2a
27	1 Disagreed with the Fuel Reduction Regime proposed, suggesting this is contrary to the Park's conservation goals. The submission suggested the buffer be created on neighbouring private property.	Where possible, such arrangements will be negotiated with Park neighbours. This has been clarified in FMP Action 10.	Yes	1d
28	1 Pointed out that the Park has no northern firebreak at this time and expressed concern about fires coming out of the Park.	This situation is addressed by the Actions in this Section.	No	2d
29	2 Wished to see more effort put into liaison with Park neighbours to establish fire protection measures on private lands where possible, rather than in the Park.	See Comment 27, this Section.	Yes	1d

No	Number of Submissions and Summary of Comment on Draft Management Plan (DMP)	Discussion / Action Taken in Final Management Plan (FMP)	Am- end?	Cr- it.
30	2 Expressed concern at the large percentage of the karri forest contained within the proposed fire buffer and suggested that fire breaks and buffers be located in private lands to the north of the karri block.	See Comment 12, this Section.	Yes	1d
31	1 Supported the concept of patch burning and stressed the importance of monitoring and refinement.		No	2a
32	1 Expressed concern that no intervals were specified between fires in the patch burning and fuel reduction regimes and recommended increased research and monitoring of effects.	Intervals will vary depending on research results, fuel accumulation rates etc. Research and monitoring are covered by FMP Action 1(ix) in this Section.	No No	2f 2d
33	1 Suggested the installation of gas barbecues at Shelley Beach and encouragement of the use of suitable portable stoves.	These suggestions are covered by FMP <i>Picnicking</i> Action 2 and by FMP Actions 8 and 9 in this Section.	No	2d
34	1 Agreed with DMP Rec. 10 in this Section.		No	2a
35	1 Expressed concerns about burning practices, timing and frequency of burns and the effectiveness of and ability to control "patch burns". The submission recommended further research before the fire management plan is finished.	See Comments 15 and 19, this Section.	No	2c 2d
36	1 Felt that CALM carries out prescribed burns at the wrong time. Instead of burning when wildlife have just had their young, it was suggested that prescribed burning be carried out just after the first rains.	Research into the impacts of fire will form the basis of changes in procedures as indicated in FMP Action 1(ix) of this Section.	No	2d
37	1 Expressed concern about the possible continuation of prescribed burns at five yearly intervals into the future, suggesting in the longer term that 10-15 year intervals would be more acceptable. The submission cited regeneration of flora, the maintenance of fauna habitat and aesthetic considerations as the basis for this belief.	See Comment 36, this Section.	No	2d
38	1 Suggested consideration be given to leaving an unburnt buffer zone around Lake William as it is one of the few summer water points for fauna in the Park.	Lake William is contained within an area not proposed for prescribed burning during the life of this Plan. The situation will be reviewed then as indicated in <i>Updating</i> .	No	2d
39	1 Pointed out that in Figure 6, the northern fuel reduced buffer is shown as 500-600 metres wide, while in the text, it is described as approximately 200-400 metres only.	The buffer, as indicated in the text, is to be 200-400 metres wide. Figure 6 has been modified in the Final Plan.	Yes	1e

No	Number of Submissions and Summary of Comment on Draft Management Plan (DMP)	Discussion / Action Taken in Final Management Plan (FMP)	Amend?	Crit.
40	1 Observed that the fuel reduced buffer appears to contain Block C, Block A, the karri near the main Park entry and the area around Moates Lagoon. The submission maintained that this seems inappropriate when values are considered and suggested that more detailed fire protection plans be developed for areas along the northern boundary which have high conservation or landscape value.	The proposed northern boundary buffer has been modified to minimise impact on the karri trees while ensuring adequate protection. Detailed prescriptions are prepared for all burns.	Yes No	1d 2c
41	1 Strongly supported DMP Recs. 6 and 7 in this Section, suggesting that they demonstrate a balance between maintaining the quality of camping and reducing the risk of harming the environment. The submission argued that research into ways of facilitating the use of wood free of seeds and soil, perhaps by specifically designed dispensers, should be a CALM priority.	See Comments 20 and 21, this Section.	Yes	1e
	16. Plant Disease			
1	5 Agreed with the recommendations in this Section.		No	2a
2	1 Advocated an increase in dieback education signs in the Park and the development of a program for screening all materials brought in for construction etc. in the Park.	These ideas are addressed by the Actions in this Section.	No	2d
3	1 Supported DMP Recs. 1- 6 and 8 -12.		No	2a
4	1 Pointed out that dieback disease can be spread in its dormant state and become active in another area when weather conditions are favourable.	This information has been included in the background to this Section.	Yes	1a
5	2 Supported DMP Rec. 5.		No	2a
6	1 Queried the inclusion of "intensification" and "other plant diseases" in the first objective for this Section.	The objectives have been reorganised to acknowledge the fact that plant diseases other than dieback may necessitate different management approaches.	Yes	1a
7	1 Pointed out that susceptibility classes in Table 8 do not relate to Figure 7 and suggested that the percentage of the Park affected should be excluded from the Table.	Table 8 has been deleted from the Final Plan.	Yes	1e
8	1 Agreed with DMP Recs. 1, 4-7 and 10-13.		No	2a
9	1 Believed that DMP Recs. 1(ix), 2, 8 and 9 will require the presence of a permanent ranger and that DMP Rec. 2 should be amended to read "Improve all access routes..." etc.	The appointment of a permanent ranger is a high priority indicated in FMP <i>Staffing</i> Action 1. FMP Action 2 has been amended to clarify the need to improve some access routes.	No Yes	2d 1e

No	Number of Submissions and Summary of Comment on Draft Management Plan (DMP)	Discussion / Action Taken in Final Management Plan (FMP)	Amend?	Crit.
10	1 Suggested that DMP Rec. 3 be changed to read "Seek to contain the small Pc infections beside the Dingo Beach track with phosphorous acid or other treatment..." etc.	The FMP Action has been amended along these lines.	Yes	1e
11	1 Stressed that education of Park users (DMP Rec. 11) should be a high priority.	All Actions in this Plan are subject to the allocation of priorities as resources permit as indicated in <i>Management Priorities</i> .	No	2d
12	1 Believed DMP Rec. 2 to be difficult to implement.	The FMP Action has been amended to indicate it will be implemented as far as resources permit.	Yes	1e
13	1 Suggested that the words "with provisions for limiting dieback disease spread from the area" be added to DMP Rec. 4.	The FMP Action has been amended along these lines.	Yes	1d
14	1 Pointed out that <i>Phytophthora cryptogea</i> was isolated from a dead <i>Xanthorrhoea priessii</i> not a dead banksia as stated in the draft.	This has been corrected in the Final Plan.	Yes	1e
15	1 Strongly supported action to stop the further spread of dieback disease including closure and upgrading of roads.		No	2a
16	1 Agreed with DMP Rec. 4 and suggested that special steps be taken to prevent access by motor cycles.	This will be done as far as possible.	No	2a
17	1 Supported DMP Recs. 1, 2, 6, 7, 8, 9, 10, 11, 12 in this Section.		No	2a
18	1 Pointed out that not only vegetation but also dependent fauna would be affected by dieback disease.	Mention of this fact has been added to the background information.	Yes	1e
19	1 Urged that prevention of dieback spread be given a high priority in terms of research, resources, planning and enforcement.	See Comment 11, this Section.	No	2d
20	1 Strongly supported DMP Rec. 3 but believed the access track needs to be upgraded and stabilised in a way which minimises dieback spread. The submission felt information about the disease should be provided at such points.	The track to Dingo Beach is proposed for upgrading as indicated in <i>Access</i> . Provision of information is covered by FMP Action 1(v) of this Section.	No	2d
21	1 Disagreed with DMP Rec. 4, recommending closure of foot access to Lake William unless the track is stabilised to ensure dieback disease is not spread. The submission suggested that information is important to support such track closures.	All foot access routes are proposed to be stabilised as indicated in <i>Access</i> . Provision of information is covered by FMP Action 1(v) of this Section.	No	2d
22	1 Agreed with DMP Rec. 2 in this Section.		No	2a
23	1 Agreed with DMP Recs. 3, 4, 5 and 6 in this Section.		No	2a

No	Number of Submissions and Summary of Comment on Draft Management Plan (DMP)	Discussion / Action Taken in Final Management Plan (FMP)	Amend?	Crit.
24	1 Considered that the judicious use of fire would stop the natural spread of dieback disease.	Research results do not support this contention.	No	2f
25	1 Supported the objectives in this Section.		No	2a
26	1 Stressed the need for a permanent ranger presence in the Park in the implementation of DMP Recs. 1(i), 7 and 9.	The appointment of a permanent ranger is a high priority as indicated in FMP <i>Staffing</i> Action 1.	No	2d
27	1 Cautioned against allowing high public visitor use periods to override the implementation of DMP Rec. 1(iii).	This FMP Action will be implemented at all times.	No	2d
28	1 Suggested the inclusion of the Shire and other Government agencies in the implementation of DMP Rec. 1(v).	An FMP Action stressing this ongoing need has been added.	Yes	1d
29	1 Sought consideration of aerial application of phosphorous acid in implementing DMP Rec. 1(vii).	This will be considered in the implementation of the FMP Action.	No	2d
30	1 Supported all efforts to restrict the spread of dieback disease.		No	2a
31	1 Suggested a darker stipple be used on Figure 7 as dieback disease areas are not clear.	The clarity of Figure 7 has been improved in the Final Plan.	Yes	1e
32	2 Pointed out that Table 8 and Figure 7 do not match and suggested the Table be deleted or redrafted.	See Comment 7, this Section.	Yes	1e
33	1 Sought the inclusion of Blocks C and A in Figure 7.	These blocks have been added in the Final Plan.	Yes	1e
	17. Weeds			
1	7 Agreed with the recommendations in this Section.		No	2a
2	1 Agreed with DMP Recs. 1-4 and 6.		No	2a
3	1 Suggested that eradication may not be possible and pointed out that Blackberry is now off the list of species to be eradicated.	FMP Action 5 has been amended to indicate that blackberry should be controlled and if possible eradicated.	Yes	1a
4	1 Disagreed with DMP Rec. 4 preferring to see buffalo and kikuyu eradicated at Dunskey Beach and replaced with <i>Dichondra repens</i> .	Introduced grasses will be replaced with natives if practicable. This has been added to the FMP Action.	Yes	1d
5	1 Expressed the view that weed control would best be done by hand, using volunteers.	This is covered in FMP Action 6.	No	2d

No	Number of Submissions and Summary of Comment on Draft Management Plan (DMP)	Discussion / Action Taken in Final Management Plan (FMP)	Amend?	Crit.
6	1 Suggested that weed control should be an immediate priority and sought mention of the pasture weed invasion in the northern buffer zone. The submission suggested that this area be monitored and the weeds controlled with herbicide, thus reducing weeds and increasing the effectiveness of the buffer.	All Actions in this Plan are subject to the allocation of priorities as resources permit as indicated in <i>Management Priorities</i> . Control of weeds in the northern buffer zone is covered by the Actions in this Section.	No	2d
7	1 Sought urgent action on weed control, particularly in recently rehabilitated areas.	All Actions in this Plan are subject to the allocation of priorities as resources permit as indicated in <i>Management Priorities</i> .	No	2d
	18. Feral Animals			
1	6 Agreed with the recommendations in this Section.		No	2a
	19. Rehabilitation			
1	6 Agreed with the recommendations in this Section.		No	2a
2	1 Sought amendment of DMP Rec. 8 so that liaison with the Shire of Albany is over the rehabilitation of any area previously used for extraction of road making materials. The submission stated that WCHNP is not a gravel pit.	As indicated in the Draft Plan, the Shire of Albany has requested access to road-making materials from an area within the Park. Liaison between CALM and the Shire over this issue will be essential to ensure protection of the Park. Rehabilitation of the area previously used for extraction of road-making materials will be in accordance with the Actions in this Section. Liaison with the Shire over this issue is ongoing.	No	2d
3	1 Maintained that DMP Recs. 5 and 7 duplicated DMP Rec. 1(i).	FMP Action 1(i) refers to surveys while FMP Actions 5 and 7 detail the rehabilitation guidelines.	No	2b
4	1 Supported DMP Rec. 10 in this Section.		No	2a
5	1 Suggested that irresponsible 4WD users be put to work on rehabilitation projects rather than fined.	This idea will be considered.	No	2b
6	2 Agreed with DMP Rec. 3 in this Section.		No	2a
7	1 Supported DMP Rec. 7 in this Section and offered local volunteer assistance in its implementation.	Volunteer assistance is most welcome.	No	2a
8	1 Supported the rehabilitation work proposed in the Park and expressed the hope that this would be a funded, ongoing concern.	Resources for implementation of Actions are covered in <i>Staffing and Funding</i> .	No	2d

No	Number of Submissions and Summary of Comment on Draft Management Plan (DMP)	Discussion / Action Taken in Final Management Plan (FMP)	Amend?	Cr- it.
	20. Aboriginal History and Cultural Resources			
1	6 Agreed with the recommendations in this Section.		No	2a
2	1 Maintained that in order to ensure that Aboriginal sites are considered in all management actions, CALM should lobby for the appointment of an Aboriginal Sites Department Officer to be based in Albany.	Such possibilities are currently being considered by the WA Museum.	No	2c
	21. European History and Cultural Resources			
1	5 Agreed with the recommendations in this Section.		No	2a
2	1 Questioned the relevance of DMP Recs. 1(i) and 1(iv) and asked whether there are any historic sites in the Park.	No sites have been designated at present but further research may indicate the existence of sites.	No	2d
3	1 Agreed with DMP Recs. 2 and 3 in this Section.		No	2a
4	1 Recommended changing the road name from Hortins Road to Shelley Beach Road as this is how it is known locally.	After discussions with staff of Albany Shire, it has been agreed to seek to retain the name "Hortin" as far south as the junction with Coombes Road. From this point south, it is to be recommended to the State Nomenclature Committee that the road be renamed "Shelley Beach" Road. The Plan has been amended along these lines.	Yes	1b
5	1 Provided background information on a shipwreck off the coast of WCHNP and suggested the wreck be marked on site and information provided in literature on the subject in line with DMP Recs. 1(i) to 1 (iv).	Mention of the wreck has been added to this Section. The appropriateness and practicality of marking and advertising the wreck will be discussed with the WA Maritime Museum.	Yes	1a
	Recreation (General)			
1	1 Supported the introduction of Codes of Conduct for all activities in the Park.		No	2a
2	1 Expressed the view that the DMP does not address the potential for new uses of the Park.	FMP Action 4 in this Section covers potential new users of the Park. A comment covering new uses has also been added in the background information.	Yes	1e
3	1 Believed many good improvements are proposed in the Recreation Chapter while trying to stay "low key" but suggested that overall, much of this is just upgrading the "status quo".		No	2b

No	Number of Submissions and Summary of Comment on Draft Management Plan (DMP)	Discussion / Action Taken in Final Management Plan (FMP)	Amend?	Cr-it.
	22. Attractions and Existing Use			
1	7 Agreed with the recommendations in this Section.		No	2a
2	1 Agreed with DMP Rec. 2 in this Section and suggested that alternatives to rerouting be considered where possible.	As indicated in <i>Access</i> , rerouting of access tracks will only be considered where existing alignments are unsatisfactory	No	2d
3	1 Disagreed with DMP Rec. 3 as the Park has a major fishing industry, allows camping, has permanent structures and accommodates 4WD vehicles.	The features mentioned are not seen as inconsistent with this FMP Action.	No	2d
4	1 Agreed with DMP Rec. 2 in this Section.		No	2a
5	1 Found DMP Rec. 3 ambiguous as provision of facilities often reduces impacts.	The Plan seeks to balance the provision of facilities with likely impacts.	No	2d
6	1 Stated with respect to the availability of alternative opportunities (DMP Rec. 4), that coastal fishing is allowed and access provided in all south coast national parks.	This FMP Action addresses potential new uses for the Park.	No	2b
	23. Access			
1	2 Supported improvement in and control of access in the Park.		No	2a

No	Number of Submissions and Summary of Comment on Draft Management Plan (DMP)	Discussion / Action Taken in Final Management Plan (FMP)	Am-end?	Cr-it.
2	<p>6 Argued for the provision of 2WD access rather than 4WD access throughout the Park. The following reasons were given in submissions:</p> <ul style="list-style-type: none"> • public safety • rescue/recovery from hazardous sports • wildfires and fire protection • disease protection and prevention of spread of infections • provision of access for eco-tourism to enable financial return to be made from efficient management • minimising of patrol and servicing costs in the Park • prevention of further degradation by 4WD vehicles • temporary improvements to 4WD access are costly • 4WD access supports the recreational enjoyment of privileged minority groups instead of allowing enjoyment of the area by all • 4WD tracks require continual maintenance • "less than responsible" visitors are attracted to 4WD tracks • development of a high tourism profile to the Park • provision of 4WD access in the Park runs counter to the Principal Management Directions and the recommendations in the Conservation Chapter of the Plan • 4WD tracks lead to the introduction of weeds • 2WD access to the State's southern most point will enable more people to experience the Cape area and provide revenue opportunities • continual use of a long 4WD track could jeopardise the health and safety of staff • 4WD tracks could be provided to other points throughout the Cape area • the tourism industry is often supply rather than demand led and improved access could stimulate a considerable increase in visitor levels • very few of the visitors to Albany arrive in a 4WD vehicle, preventing most visitors from seeing the best coastal scenery along the South Coast • Albany needs to encourage tourists • national parks are supposed to encourage people to view and appreciate areas of scenic significance • the project could attract Main Roads Department tourist road funding • retired visitors, the largest tourist group in Australia (and increasing), cannot withstand four wheel driving • the Plan will be in force for 10 years and that is too long to restrict this important tourist destination to the chosen few • it is CALM's duty to provide access and facilities for public recreation • 4WDs get 50% or more of the Park's recreation zone (and elsewhere) while those in 2WDs are generally denied access • the current system puts pressure on the Shelley Beach area. 	<p>There is a wide range of community opinion on this issue as indicated by comments on this Section of the Plan. As discussed in <i>Regional Context</i>, the South Coast Regional Management Plan (1992-2002) assigns WCHNP to the "low key" or intermediate category. Provision of 2WD access throughout the Park is seen as inconsistent with this fundamental philosophy and would unnecessarily duplicate access provided in nearby Torndirrup National Park (designated as a Park with existing or potential major site or facility developments). WCHNP cannot be considered in isolation.</p> <p>2WD access is proposed to Shelley Beach and to a terminus point on the ridge above Dingo Beach (although this was unclear on Figure 8 of the DMP), as indicated in this Section. Consideration will be given to upgrading the Lake William Road to a 2WD access during the life of this Plan if warranted by usage levels. The Section has been amended to indicate this possibility.</p> <p>FMP Action 2 of <i>Commercial Visitor Services</i> also proposes the licensing of a 4WD tour operator enabling access for all throughout the Park.</p> <p>2WD access will be reviewed at the end of the life of this Plan as indicated in <i>Updating</i>.</p>	<p>No</p> <p>Yes</p>	<p>2d 2e 2f</p> <p>1b</p>

No	Number of Submissions and Summary of Comment on Draft Management Plan (DMP)	Discussion / Action Taken in Final Management Plan (FMP)	Amend?	Cr- it.
3	1 Expressed concern that the proposed path from the end of Golden Road to Lake William Road traverses an area which used to be frequented by Peregrine falcons and that the combination of heavy use of Lake William Road and the path would almost certainly prevent the return of these birds which have been absent for some time.	This information will be used in choosing a suitable alignment for the proposed path. FMP General Action 2 has been modified to indicate that flora and fauna occurrences will influence access alignment.	Yes	1a
4	1 Suggested the proposed path around Lake William be designed to ensure it does not impact on the nearby area at the eastern end of the Lake which is the only known breeding site in the Park for the patchily distributed frog <i>Helieioporus inornatus</i> .	See Comment 3, this Section.	Yes	1a
5	1 Suggested that the proposed footpath between Dingo and Shelley Beaches should avoid an area inhabited by an as yet unnamed species of trapdoor spider.	See Comment 3, this Section.	Yes	1a
6	1 Agreed with the recommendations in this Section.		No	2a
7	1 Expressed the view that access to Shelley and Bornholm Beaches should be for professional fishers only and that this should be signposted.	Both Shelley and Bornholm beaches are popular recreation areas as indicated in numerous submissions throughout this document.	No	2c
8	1 Sought an additional recommendation that all roads would be continually upgraded.	Maintenance will be at the highest standard possible for each class of road in the Park. This has been clarified in FMP General Action 2 in this Section.	Yes	1e
9	1 Agreed with General Recommendations 1-4.		No	2a
10	1 Recommended that the section of Lake William Road from Hortins Road to "Back Beach" be converted to 2WD access.	Consideration will be given to upgrading the Lake William Road to a 2WD access during the life of this Plan if warranted by usage levels. The Section has been amended to indicate this possibility.	Yes	1b
11	1 Agreed with DMP General Rec. 1 except in the case of foot access.	Proposals for foot access have been modified in the light of comments received (see <i>Bushwalking</i>).	Yes	1a
12	1 Agreed with General Recommendations 2-4.		No	2a
13	2 Disagreed with the provision of access to Bornholm Beach (General DMP Rec. 4) due to erosion of the sand hills.	The possibility of stabilising this access will be investigated. The condition of the track will be monitored during the life of the Plan and continued access will be evaluated on the basis of findings. FMP <i>Access</i> Action 4 has been amended to reflect this. As indicated in FMP <i>Motorised Recreation</i> Action 5, education of users will also take place. The whole issue of vehicle access to Bornholm Beach will be evaluated when the Plan is reviewed at the end of its life, as indicated in <i>Updating</i> .	Yes	1e

No	Number of Submissions and Summary of Comment on Draft Management Plan (DMP)	Discussion / Action Taken in Final Management Plan (FMP)	Am-end?	Cr-it.
14	1 Supported proposals to design tracks to combat erosion, minimise effects on groundwater, provide for safe driving and give suitable evacuation routes. The submission stressed the importance of proper track maintenance.	Tracks are to be maintained as indicated throughout the Plan.	No	2a 2d
15	1 Stated that any proposal to provide 2WD access to the Cape area would be opposed.	See Comment 2, this Section.	No	2a
16	1 Agreed that access to "Back Beach" should be for 4WD vehicles only to alleviate possible congestion.		No	2a
17	1 Agreed that all tracks south and west of Shelley Beach should be for 4WD access only.		No	2a
18	1 Indicated that vehicle access to the high point overlooking Dingo Beach would be advantageous to hang gliders but accepted that if this could lead to the spread of dieback disease, then the track should be closed.	Vehicle access is to be brought back from the existing "lookout point" above Dingo Beach due to problems of erosion and potential dieback risk.	No	2a
19	2 Generally supported the proposed system of access as outlined in Figure 8.		No	2a
20	2 Recommended that vehicle access to the WCH area be stopped and the area rehabilitated.	There is a wide range of community opinion on this issue as indicated in the submissions on this Section of the Plan. Rationalisation of 4WD access on the Cape is seen as the most realistic option. See also Comment 2, this Section.	No	2e
21	1 Expressed reservations about the system of tracks proposed for the Park as many of them pass through areas infected with dieback disease.	As indicated in FMP General Action 2 of this Section and in numerous other Actions in the Plan, Park management will ensure minimisation of the risk of further dieback spread. The situation will be closely monitored throughout the life of the Plan and changes to access made if necessary as indicated in FMP <i>Plant Disease</i> Action 11.	No	2d
22	3 Supported the objective in this Section.		No	2a
23	1 Voiced concern about the extent of resources required to maintain tracks in order to minimise dieback disease spread and erosion and to prevent users from making new tracks.	Resources to implement the Actions in this Plan will be sought as indicated in <i>Implementation</i> . The techniques being used for track stabilisation require minimal resources.	No	2d
24	1 Strongly supported DMP General Rec. 3.		No	2a
25	1 Disagreed with the provision of vehicle access to Bornholm Beach (DMP General Rec. 4) and recommended its immediate closure due to its degraded state and its location at the "wilderness" end of the Park.	See Comment 13, this Section.	Yes	1e

No	Number of Submissions and Summary of Comment on Draft Management Plan (DMP)	Discussion / Action Taken in Final Management Plan (FMP)	Am-end?	Crit.
26	1 Suggested bituminising sections of Lake William and Shepherds Lagoon Road to reduce dieback disease spread.	These tracks are to be upgraded and stabilised as indicated in this Section. The use of bitumen is unlikely to be necessary with techniques such as rubber belting and with current stabilisation proving very effective.	No	2d
27	1 Sought continuation of existing vehicle access to the cliffs from Golden Gates Beach to Torbay Head and from Shelley Beach to Forsyth Bluff for emergency evacuation of rock climbers.	The Plan proposes 4WD access close to the cliffs at several locations linked by foot paths as indicated in this Section. This will provide adequate access in emergencies. Degraded tracks will be closed and rehabilitated as indicated in this Section and in <i>Rehabilitation</i> .	No	2d
28	1 Pointed to the damage done by 4WD vehicles in the Park and suggested that access tracks be monitored and closed if necessary.	The Actions in this and other Sections of the Plan make provision for such management.	No	2d
29	1 Argued that movement of vehicles within the Park should be carefully controlled and areas likely to suffer erosion closed off.	See Comment 28, this Section.	No	2d
30	1 Disagreed with provision of vehicle access to Dunskey Beach, suggesting foot access only be provided.	New techniques being used in the Park are enabling the stabilisation of this track. Unstable alignments in the vicinity will be closed as indicated throughout the Plan.	No	2d
31	1 Suggested that caravans should not be allowed in WCHNP.	Caravans will be permitted into the terminus carpark to be developed on the ridge above Dingo Beach (once the access has been upgraded) and to the Shelley Beach lookout area. For reasons of safety and lack of adequate turning space, Shelley Beach will be closed to caravans. An Action clarifying these arrangements has been added to <i>Motorised Recreation</i> .	Yes	1b
32	2 Agreed with DMP General Rec. 3 in this Section.		No	2a
33	1 Believed that by-pass tracks could be of benefit in areas where the main track could sustain damage from continued use.	Once the main tracks in the Park have been stabilised, there will be no requirement for by-pass tracks. However, provision will be made for vehicle passing at suitable locations. This has been clarified in the text and in an amendment to FMP General Action 3.	Yes	1e
34	1 Maintained that vehicle access close to the destination causes less damage than a footpath from which people will stray. The submission sought vehicle access to all major fishing spots.	The Plan proposes terminus carparks at numerous sites around the coast linked by foot access. This provides access to locations all around the coast.	No	2d

No	Number of Submissions and Summary of Comment on Draft Management Plan (DMP)	Discussion / Action Taken in Final Management Plan (FMP)	Amend?	Crit.
35	1 Applauded the provision of access for the disabled and suggested beach access should be provided at both Cosy Corner and Shelley Beaches.	Access suitable for the disabled will be provided to the beach at Shelley Beach but cannot be taken onto the sand due to beach instability. Cosy Corner is outside WCHNP but is the subject of a master development plan by the Shire. The suggestion will be brought to their attention.	No	2f 2c
36	1 Argued that maintenance of vehicle access to cliff areas is important to facilitate rescue and evacuation in the event of a climbing accident and urged consultation with climbers on this issue.	Climbers were consulted on this issue during preparation of the Draft Plan. See also Comment 27, this Section.	No	2d
37	1 Maintained that there is an urgent need to upgrade vehicle access at Shepherds Lagoon and Torbay Beach Roads as there are extensive wet areas where the roads enter the Park causing potential for dieback disease spread.	The Actions in this Section of the Plan make provision for these tracks to be upgraded.	No	2d
38	1 Complimented the work done in stabilising 4WD tracks with cement and conveyor belting.		No	2b
39	1 Maintained that 4WD vehicles should not be permitted in the natural environment zone except for management purposes.	Limited 4WD vehicle access is seen as consistent with the Natural Environment Zone as indicated in <i>Zoning</i> , Table 2. See also Comment 13, this Section.	No Yes	2d 1e
40	1 Expressed concern about possible spread of dieback disease from Shepherds Lagoon Road and the proposed bridle trail. The submission suggested that if these tracks are not needed for management purposes, they should be closed and rehabilitated. Restriction of pedestrian access here and around Lake William was also suggested.	See Comment 21, this Section.	No	2d
41	1 Stressed that any footpath in the vicinity of Lake William must be positioned to ensure that it does not disturb the Aboriginal site located there.	This need is recognised in FMP <i>Aboriginal History and Cultural Resources</i> Action 1(i).	No	2d
	24. Day Use			
1	2 Agreed with the recommendations in this Section.		No	2a
2	1 Agreed with DMP Recs. 1 and 3 in this Section and considered them to be a high priority from a tourism perspective.		No	2a
	24.1 Sightseeing and Photography			
1	8 Agreed with the recommendations in this Section.		No	2a

No	Number of Submissions and Summary of Comment on Draft Management Plan (DMP)	Discussion / Action Taken in Final Management Plan (FMP)	Amend?	Crit.
2	1 Expressed concern about dieback status and potential for disease spread in the implementation of DMP Rec. 1.	This issue is covered by the Actions in <i>Plant Disease</i> and <i>Access</i> .	No	2d
3	1 Agreed strongly that the cliffs in the Park are spectacular and it is an excellent area for sightseeing and photography.		No	2a
4	3 Agreed with DMP Rec. 1 in this Section.		No	2a
	24.2 Picnicking			
1	8 Agreed with the recommendations in this Section.		No	2a
	25. Camping			
1	1 Sought deletion of DMP Rec. 1(i) as it contradicts the objective of providing low impact camping.	While there is a range of camping opportunities in the area of WCHNP, it is agreed that a number of these are outside the Park. The Rec. has not been included in the FMP and the issue of facilities for the disabled included elsewhere.	Yes	1e
2	1 Offered assistance with the implementation of DMP Rec. 8 and requested to be able to use the rebuilt shack as a headquarters for a local fishing club with the understanding that it would be for the benefit of all Park users.	Since the release of the Draft Plan, the cabin referred to has collapsed due to its age and the effects of vandalism and has been removed. FMP Action 8 has been modified to encompass the provision of new cabin camping on the site. This could only be possible with the assistance of community groups, however the accommodation will be the property of CALM and available to all users.	Yes	1d
3	1 Agreed with DMP Recs. 1-5 and 7-15 in this Section.		No	2a
4	2 Agreed with the recommendations in this Section.		No	2a
5	1 Put the view that the camping recommendations should not be pursued at this time and that emphasis should be placed on management presence and upgrading of access.	All Actions in this Plan are subject to the allocation of priorities as resources permit as indicated in <i>Management Priorities</i> .	No	2d
6	1 Agreed with DMP Recs. 2, 3, 9, 11, 14 and 15.		No	2a

No	Number of Submissions and Summary of Comment on Draft Management Plan (DMP)	Discussion / Action Taken in Final Management Plan (FMP)	Am-end?	Cr-it.
7	1 Believed DMP Rec. 4 to be impossible to monitor without a resident ranger.	Reference to a permit system has been removed due to changes to this FMP Action. The appointment of a permanent ranger is a high priority as indicated in FMP <i>Staffing</i> Action 1.	Yes No	1b 2d
8	1 Predicted possible conflict over implementation of DMP Rec. 5, particularly if friends of the commercial fishers use their camping facilities.	FMP Action 4 has been modified to indicate that priority use of the site by commercial fishers will be subject to strict conditions.	Yes	1d
9	14 Disagreed with DMP Rec. 6. The following reasons were given in submissions: <ul style="list-style-type: none"> • continued use of the gravel area at West Cape Howe should be permitted • the development would have a devastating impact on the natural beauty of the area and would spoil its wilderness feel • resting in vehicles and use of the Dunsky shack are suitable alternatives • there is insufficient demand to warrant all the camping areas proposed • camping in the area of the Cape should be concentrated at Dunsky Beach • toilet facilities are not required in the area • flexibility in camping arrangements should be maintained • enforced camping at the proposed site would lead to inconvenience and increased vehicle usage • the proposal would concentrate too many people in one area to the detriment of the Park generally • creation of a new site is inconsistent with other recommendations in the DMP such as the consideration of the special needs of wilderness users • the vegetation in the area is very fragile and already needs rehabilitation • vegetation may be damaged by firewood collection • the exposed nature of the area makes it unsuitable for camping • backpack camping is permitted in the Park, catering for people who walk in • a toilet can be located in the area without the need to develop a campground • if the road to the Cape is upgraded to 2WD standard, there would be no need for a special site for the small user group • camping facilities are available outside the Park • a single campsite would create the need for a toilet facility where none exists now • a single campsite would require climbers to go back and forth between camping and climbing areas increasing foot and vehicle traffic and inconveniencing climbers • a single campsite would isolate climbers from their possessions and increase problems of theft • current use by climbers is very low and impacts are low • creation of a site will lead to a change in visitor use, attracting more general visitors • creation of a specific site will lead to a focussed management requirement with the introduction of at least minimal facilities and more ranger presence. 	The proposal to construct a Cape camp will not be pursued at this time. Camping in the vicinity of the Cape will be permitted at Dunsky Beach. Consideration will also be given to the designation of a backpack camping area (or areas) on the Cape in line with FMP Action 3 in <i>Bushwalking</i> . This situation will be monitored and if a clear need for an alternative campsite arises, development of a low impact, concealed campground, back from the coast will be considered.	Yes	1b

No	Number of Submissions and Summary of Comment on Draft Management Plan (DMP)	Discussion / Action Taken in Final Management Plan (FMP)	Amend?	Cr- it.
10	1 Believed camping on the scale proposed in the Plan is out of proportion with the size of the Park and that is should be phased out.	Low impact camping only is proposed in the Plan and is widely supported in other submissions.	No	2e
11	1 Saw potential for conflict of the implementation of DMP Rec. 8, especially if the builders attempt to claim sole ownership.	See Comment 2, this Section.	Yes	1d
12	1 Expressed the view that the camping suggested in DMP Rec. 10 could be located in private land adjoining the Park.	The sites proposed are along paths to be developed close to the coast.	No	2f
13	1 Believed that degradation due to campfires is a forgone conclusion and thus DMP Rec. 13 is unnecessary.	CALM recognises that management problems can result from irresponsible use of campfires in National Parks, but is keen to maintain the traditional campfire as part of the bush camping experience. Accordingly, fires are to be permitted on a trial basis in fireplaces which will be provided at designated campgrounds except Shelley Beach. Wood will be provided by the Department when resources permit. Otherwise, campers must bring their own wood free of soil and seeds. The trial will be monitored for 12 months and extended or abandoned depending on the level of damage determined. FMP Action 12 has been amended to indicate this.	Yes	1e
14	1 Sought the addition of the words "low impact" before "camping area" in DMP Rec. 6.	FMP Action 6 has been reworded along these lines.	Yes	1d
15	1 Suggested two possible alternatives to the closure of Shelley Beach to camping: <ul style="list-style-type: none"> • the site have a camping number limit • the camping area be closed during peak periods such as at Easter and near Christmas, but open for camping during off-peak periods. The first option was preferred as campers are able to render immediate assistance should a hang glider pilot be injured at the site.	In response to the submissions received, FMP Action 3 has been modified to indicate that a limited number of campsites are to be made available at Shelley Beach. Self-registration facilities are to be provided at the site. When these sites are full, campers will be directed to alternative areas in the vicinity of WCHNP. Impacts at the the site will be monitored during the life of this Plan and modifications made to this arrangement if necessary.	Yes	1b
16	1 Felt that DMP Rec. 6 should be implemented discreetly and that the campground should be limited in capacity.	See Comment 9, this Section.	Yes	1b
17	1 Expressed concern about dieback disease status and potential for disease spread in the implementation of DMP Rec. 14.	No paths will be constructed unless this can be achieved without significant risk of dieback disease spread (see FMP <i>Access</i> General Action 2). Path sections will be constructed in priority order. This has been clarified in the Final Plan.	No Yes	2d 1d

No	Number of Submissions and Summary of Comment on Draft Management Plan (DMP)	Discussion / Action Taken in Final Management Plan (FMP)	Am- end?	Cr- it.
18	<p>1 Recommended that all parts of DMP Rec. 1 be deleted for the following reasons:</p> <ul style="list-style-type: none"> • 1(i) is too broad • 1(ii) is only viable if 2WD access is provided to the Cape area • 1(iii) would increase the risk of wildfire and cause damage to vegetation • 1(iv) should be incorporated in DMP Rec. 2 • 1(v) is covered in Section 35, <i>Information, Education and Interpretation</i>. 	<p>Rec. 1(i) has not been included in the FMP. (See Comment 1, this Section).</p> <p>FMP Action 1(ii) is seen as a reasonable expectation as in CALM campgrounds throughout the State.</p> <p>FMP Action 1(iii) - See Comment 13, this Section.</p> <p>FMP Action 1(iv) - The Shire of Albany is not the only potential manager of camping opportunities in the area as indicated in the text.</p> <p>FMP Action 1(v) - Information strategies appear throughout the Plan.</p>	<p>Yes</p> <p>No</p> <p>Yes</p> <p>No</p> <p>No</p>	<p>1e</p> <p>2d</p> <p>1e</p> <p>2d</p> <p>2d</p>
19	<p>1 Expressed the view that DMP Rec. 3 discriminates against the general public as the commercial fishing camp is permitted and because it is the only 2WD accessible camping area in the Park.</p>	<p>See Comment 15, this Section.</p>	<p>Yes</p>	<p>1b</p>
20	<p>1 Disagreed with DMP Rec. 8 on the grounds that the hut would cause conflict amongst users. The submission also pointed out that the current structure is in very poor condition and suggested it be demolished and removed.</p>	<p>See Comment 2, this Section.</p>	<p>Yes</p>	<p>1d</p>
21	<p>1 Maintained that DMP Rec. 11 should be deleted as it is open to abuse of camping fees.</p>	<p>As costs directly attributable to this activity will be minimal, they will be covered by the proposed Park entry fee (see <i>Funding</i>).</p>	<p>No</p>	<p>2d</p>
22	<p>1 Suggested that DMP Rec. 13 be deleted in view of objections to DMP Rec. 12.</p>	<p>See Comment 13, this Section.</p>	<p>Yes</p>	<p>1e</p>
23	<p>1 Agreed with DMP Rec. 3 in this Section and considered it a high priority.</p>	<p>The modifications to this FMP Action (see Comment 15, this Section) will leave adequate space for day use activities at Shelley Beach.</p>	<p>Yes</p>	<p>1b</p>
24	<p>1 Disagreed with DMP Rec. 5 in this Section on the grounds of overcrowding, site degradation, visual impact and conflict with day use recreation and suggested the commercial fishing camp be relocated.</p>	<p>Alternative locations for the fisher's camp are not available as fishing activity is based off Shelley Beach.</p> <p>See also Comment 8, this Section.</p>	<p>No</p> <p>Yes</p>	<p>2f</p> <p>1d</p>
25	<p>1 Expressed the view that the Shelley Beach area used to be crowded with campers but that this has diminished since the opening of the Torbay View Motel.</p>	<p>Over the ten year life of this Plan, significant increases in visitor numbers are anticipated. Campers are recognised as distinct from those who prefer to stay in motels.</p>	<p>No</p>	<p>2d</p>

No	Number of Submissions and Summary of Comment on Draft Management Plan (DMP)	Discussion / Action Taken in Final Management Plan (FMP)	Amend?	Cr- it.
26	1 Pointed out that the rubbish bins at Shelley Beach have been removed and suggested they be replaced.	Bins will be provided at campgrounds if required. An FMP Action has been added to make this clear.	Yes	1e
27	1 Disagreed with DMP Rec. 3, maintaining that the site is only crowded on 2 or 3 weekends per year and could be closed when full at these times. The submission also predicted a drop in the use of Shelley Beach for camping once the other opportunities are developed in the Park.	See Comment 15, this Section.	Yes	1b
28	1 Expressed the view that camping at Shelley Beach is necessary so that assistance can be given by people in the camp to any hang gliding pilot in trouble.	See Comment 15, this Section.	Yes	1b
29	1 Objected to DMP Rec. 3 as the site is special because of its closeness to features such as the freshwater spring and the Lookout and because of the absence of dogs. The submission argued that there is no evidence of unacceptable environmental impact due to camping at the site and suggested that if a permit system can be introduced as an interim measure, it can be made permanent.	See Comment 15, this Section.	Yes	1b
30	1 Supported DMP Rec. 2 and suggested it would relieve pressure on the Shelley Beach site, which it was felt could be expanded without unacceptable environmental impact.	Work has commenced with the Shire of Albany on a Master Development Plan for the Cosy Corner site. See also Comment 15, this Section.	No Yes	2a 1b
31	1 Disagreed with DMP Rec. 5, maintaining that commercial fishing activity is less acceptable in a national park than recreational uses. The submission argued that commercial fishing be banned from the Park.	The Actions in this Plan are designed to minimise any negative interactions between commercial fishers and other Park users.	No	2d
32	1 Agreed with DMP Rec. 14 in this Section.		No	2a
33	1 Disagreed with DMP Rec. 1(i) seeking provision for disabled and group camping only.	See Comment 1, this Section.	Yes	1e
34	1 Believed DMP Rec. 13 should be implemented even if campfires are not permitted.	Vegetation in the Park will be monitored as indicated in FMP <i>Research and Monitoring</i> General Actions 2 and 4 and other Actions in the Plan.	No	2d
35	1 Sought a high priority for DMP Rec. 15.	See Comment 5, this Section.	No	2d
36	1 Disagreed with provision for "overnight resting" at Bornholm Beach on the grounds of objection to vehicle access to that area.	Vehicle access to Bornholm Beach will be permitted subject to conditions as outlined in Comment 13, <i>Access</i> in this document.	Yes	1e

No	Number of Submissions and Summary of Comment on Draft Management Plan (DMP)	Discussion / Action Taken in Final Management Plan (FMP)	Am-end?	Cr-it.
37	1 Disagreed with DMP Rec. 3 on the grounds of equity between commercial fishers and Park visitors. The submission suggested that 1 or 2 sites should be available with the excess camping at Cosy Corner.	See Comment 15, this Section.	Yes	1b
38	1 Disagreed with DMP Rec. 8 as shacks are an eyesore. An information shelter was preferred.	A new cabin is proposed for construction at Dunsy Beach. This will be subject to conditions as outlined in <i>Landscape</i> . Provision of information is included in the concept plan for the site. See also Comment 2, this Section.	Yes Yes	1d 1d
39	1 Agreed with DMP Recs. 6 and 9 in this Section.		No	2a
40	2 Believed camping in WCHNP should be limited to backpack camping but maintained that if facilities were to be provided, this should only happen after the appointment of a permanent ranger.	See Comment 10, this Section. The appointment of a permanent ranger is a high priority as indicated in FMP <i>Staffing</i> Action 1.	No No	2e 2d
41	2 Supported DMP Rec. 9 in this Section.		No	2a
42	1 Sought exclusion of camping from the WCH area.	See Comment 10, this Section.	No	2e
43	1 Maintained that camping should only be allowed at Dunsy and Bornholm Beaches and at Cosy Corner.	Camping is proposed at these sites. See also Comments 9 and 15, this Section.	No Yes	2d 1b
44	1 Agreed with DMP Recs. 3 and 5 in this Section.		No	2a
45	1 Suggested that camping should be restricted to tents and overnight sleeping in vehicles other than at Cosy Corner and Shelley Beach.	The Actions in this Section make provision for these suggestions.	No	2d
46	1 Disagreed with DMP Rec. 3, suggesting that open fireplaces and gas barbecues be provided at Shelley Beach.	See Comment 15, this Section. Gas barbecues only are to be provided at Shelley Beach as indicated in <i>Picnicking</i> . A new FMP Action clarifying this has been added to the Section. See also Comment 13, this Section.	Yes Yes	1b 1e
47	1 Sought provision for camping and open fires at Dunsy Beach.	Provision for this is included in the Actions. See Comment 13, this Section.	Yes	1e

No	Number of Submissions and Summary of Comment on Draft Management Plan (DMP)		Discussion / Action Taken in Final Management Plan (FMP)	Amend?	Crit.
48	1	Proposed limited and controlled camping at Shelley and Dunsy Beach with toilets provided.	The amended Actions in this Section make provision for these suggestions.	Yes	1b
49	1	Agreed with DMP Rec. 2 in this Section.		No	2a
50	1	Expressed the view that if problems persist with camping in the area of the Cape, then further restriction on all user groups must be applied and suggested spreading the load over peak periods.	See Comment 9, this Section.	Yes	1b
51	1	Suggested the designation of a camping zone to the east of the currently used exposed area on the Cape, where vegetation cover is better, rather than establishment of a campground.	See Comment 9, this Section.	Yes	1b
52	1	Agreed with DMP Rec. 14 but expressed concern about dieback disease spread and the availability of resources for path maintenance.	See Comments 5 and 17, this Section.	No Yes	2d 1d
53	1	Agreed with DMP Rec. 15 in this Section.		No	2a
		63. Nature Observation			
1	6	Agreed with the recommendations in this Section.		No	2a
2	1	Agreed with DMP Rec. 3 in this Section.		No	2a
		27. Water-Based Recreation (General)			
1	6	Agreed with the recommendations in this Section.		No	2a
		27.1 Recreational Fishing			
1	3	Disagreed that vehicles commonly drive onto Dunsy Beach.	The background information has been amended to indicate this fact.	Yes	1e
2	2	Agreed with DMP Rec. 3 in this Section.		No	2a
3	2	Agreed with the recommendations in this Section.		No	2a
4	1	Suggested provision of a fishing platform for the disabled at Cosy Corner and/or Shelley Beach.	Such a platform is not considered feasible at Shelley Beach due to beach instability. The suggestion for Cosy Corner will be brought to the attention of the Shire of Albany in which the area is vested.	No No	2f 2c

No	Number of Submissions and Summary of Comment on Draft Management Plan (DMP)	Discussion / Action Taken in Final Management Plan (FMP)	Amend?	Crit.
	27.2 Surfing			
1	6 Agreed with the recommendations in this Section.		No	2a
2	1 Agreed with DMP Rec. 1 in this Section.		No	2a
3	1 Pointed out that other areas of the Park may have some use and that popularity of sites could change.	Access to other sites is detailed in <i>Access</i> . The background information has been modified to indicate the potential for a change in the popularity of surfing sites and a new FMP Action added to cover this possibility.	Yes	1b
	27.3 Boating			
1	6 Agreed with the recommendations in this Section.		No	2a
2	1 Sought the deletion of DMP Recs. 1 and 2 as they do not come within the scope of the Plan or CALM's operations or liability.	These FMP Actions have been modified to indicate that legal jurisdiction is not with CALM.	Yes	1e
3	1 Queried whether DMP Rec. 1 was within CALM's jurisdiction at present and whether the Department has the capability to monitor mooring facilities.	See Comment 2, this Section.	Yes	1e
4	1 Urged caution in implementing DMP Recs. 1 and 2 to ensure that no liability for such facilities falls on CALM.	See Comment 2, this Section.	Yes	1e
5	1 Disagreed with DMP Rec. 1 as there are plenty of sandy patches in which to drop anchor at Dunskey Beach without damaging the reefs. The submission also pointed out that the mooring may interfere with commercial fishing operations and that CALM has no jurisdiction beyond low water mark.	Damage to reefs is known to be occurring off Dunskey Beach despite the existence of sandy patches. The Fisheries Department would be consulted before any mooring facility was considered. This has been clarified in FMP Actions 1 and 2.	No Yes	2d 1b
6	1 Requested that any plan to implement DMP Rec. 1 should also be brought to the attention of the Fisheries Department and commercial fishers.	The Fisheries Department has been included in FMP Action 1.	Yes	1b
7	1 Suggested DMP Rec. 1 be deleted as it is not CALM's role. Liability concerns were also raised.	See Comment 2, this Section.	Yes	1e
8	1 Disagreed with the provision of mooring or launching facilities at Dunskey Beach, suggesting these be allocated at Hartmans Beach.	The basis for the FMP Action is damage to the reef off Shelley Beach. This suggestion will be brought to the attention of the Department of Marine and Harbours.	No	2c

No	Number of Submissions and Summary of Comment on Draft Management Plan (DMP)	Discussion / Action Taken in Final Management Plan (FMP)	Am- end?	Cr- it.
	27.4 Diving			
1	1 Maintained that DMP Rec. 4 is not within CALM's operations or liability.	Under the Wildlife Conservation Act, CALM has responsibility for protection of wildlife on all lands and waters in WA.	No	2d
2	4 Agreed with the recommendations in this Section.		No	2a
3	1 Expressed confusion about the proposals in this Section and queried whether CALM has the resources and legislative power to accomplish them.	All Actions in this Plan are subject to the allocation of priorities as resources permit as indicated in <i>Management Priorities</i> .	No	2d
4	1 Believed DMP Rec. 7 to be already implemented under National Park regulations.	The FMP Action is enabled by National Park Regulations but must be implemented in the Park.	No	2d
5	1 Agreed with DMP Rec. 2 in this Section.		No	2a
6	1 Felt that spearfishing should not be permitted.	Although CALM has the power to ban the carrying of spearguns on land within the National Park, the banning of spearfishing is not within CALM's jurisdiction. The issue will be discussed with the Departments of Marine and Harbours and Fisheries.	No	2c
7	1 Agreed with DMP Recs. 2 and 4 in this Section.		No	2a
8	1 Disagreed with DMP Rec. 5 in this Section as this may encourage irresponsible groups to camp at Dunsy Beach.	This FMP Action has been amended to indicate that supply of a portable toilet will not be essential after installation of the toilet proposed for the site.	Yes	1b
9	1 Agreed with all diving activities.		No	2a
	28. Adventure Activities			
1	9 Agreed with the recommendations in this Section.		No	2a
2	2 Maintained that this is a growing segment of the tourism market which has economic benefits for Albany.	This is recognised by CALM and is accommodated in the Plan.	No	2d
	28.1 Bushwalking			
1	1 Considered the proposed footpaths appropriate for the Park but sought greater involvement from local bushwalkers in future management plans.	Bushwalkers were involved in the preparation of this Plan. CALM will continue to involve user groups in future planning exercises.	No	2d

No	Number of Submissions and Summary of Comment on Draft Management Plan (DMP)	Discussion / Action Taken in Final Management Plan (FMP)	Am-end?	Crit.
2	7 Agreed with the recommendations in this Section.		No	2a
3	1 Agreed with DMP Recs. 1 and 4-6 in this Section.		No	2a
4	1 Believed a permanent ranger is necessary for implementation of DMP Rec. 2.	Appointment of a permanent ranger is a high priority as indicated in FMP <i>Staffing</i> Action 1.	No	2d
5	1 Argued that DMP Rec. 3 should only be implemented when recreational pressures suggest a need.	These sites will be designated as part of the footpath planning exercise but will only be developed as required. This has been clarified in the FMP Action.	Yes	1e
6	1 Identified the following problems with DMP Rec. 2: <ul style="list-style-type: none"> • the status of dieback in areas to be traversed is unsure • path construction and/or use may spread dieback disease • except for the Shelley to Dunskey Beach section, the path is not warranted at this stage. 	No paths will be constructed unless this can be achieved without significant risk of dieback disease spread (see FMP <i>Access</i> General Action 2). Path sections will be constructed in priority order subject to resources and maintenance capability. This has been clarified in the Final Plan.	No Yes	2d 1d
7	2 Suggested that the proposed foot access to Lake William should be well defined and if feasible, boardwalks should be built over low lying wet areas to prevent the further spread of dieback disease.	A range of path construction and surfacing techniques will be used to minimise environmental risks such as dieback spread. This has been clarified in FMP Action 4.	Yes	1d
8	1 Expressed concern about the proposed foot access to Lake William as it was felt the area should remain untouched. The submission stated that the area is a possible refuge for the ground parrot and for other rare fauna and flora.	Biological surveys will be conducted before any path construction takes place. FMP <i>Access</i> General Action 2 has been modified to emphasise that flora and fauna will be considered in all access development and maintenance operations.	Yes	1d
9	1 Supported the provision of a track along the cliffs to Bornholm Beach.		No	2a
10	2 Agreed with DMP Rec. 2 in this Section.		No	2a
11	1 Maintained that care should be taken in the implementation of DMP Rec. 4 to ensure that carparks are limited in number and visually unobtrusive.	This concern is shared by CALM as indicated in <i>Landscape</i> .	No	2d
12	1 Suggested that the present road route to Lake William be used for foot access.	The current road alignment is flooded for much of the year and would be unsuitable for foot access. The alignment shown on Figure 8 is considered more suitable.	No	2f
13	1 Supported DMP Rec. 2 in this Section.		No	2a

No	Number of Submissions and Summary of Comment on Draft Management Plan (DMP)	Discussion / Action Taken in Final Management Plan (FMP)	Amend?	Crit.
14	2 Sought changes to DMP Rec. 2 to stress the need to ensure that dieback disease is not spread by path construction, maintenance or use.	FMP Action 4 has been reworded along these lines.	Yes	1d
15	1 Suggested amendment of DMP Rec. 2 to include provision of boot cleaning stations and free draining path surfaces to ensure dieback disease is not spread by path use.	An FMP Action concerning boot cleaning equipment has been added to this Section.	Yes	1d
16	1 Agreed with DMP Rec. 2 and offered local volunteer assistance with its implementation.	The assistance of volunteers will be welcome as indicated in <i>Liaison and Community Involvement</i> .	No	2a
17	1 Considered the proposed coastal footpath to be a major enterprise with substantial dieback risks. The submission considered that the tracks from Shelley Beach to Dunsy Beach, and from Cosy Corner to Forsyth Bluff to be acceptable as these are low hazard sites, but urged that proposed sections from Dingo Beach to Shelley Beach and from Dunsy Beach to the western end of the Park not proceed at this stage. The submission suggested this situation could be reviewed in five years time.	See Comment 6, this Section.	Yes	1d
18	1 Commended the proposed paths (querying whether these already existed), but criticised them for being haphazard and not taking advantage of magnificent coastal landscapes. The submission included plans suggesting alternative paths and rehabilitation of excess tracks.	The proposed paths do not exist yet. Extensive field investigations and stereoscopic air photographic work were used to develop the proposed alignments. Factors including topography, drainage, vegetation, soil cover, soil type and vista points were used. The proposed alternative would appear to be unconstructable. Excess tracks are to be rehabilitated as detailed in <i>Rehabilitation</i> .	No	2d
19	1 Believed the proposed path network to be over ambitious within the life of the Plan.	The path sections will be constructed in priority order as resources and maintenance capabilities permit. This has been clarified in the Final Plan.	Yes	1d
20	1 Suggested closure of the footpath between Shelley Beach and the Lookout on the basis of the steep gradient, low use and likely lower use once camping moves from Shelley Beach.	As indicated in the Draft Plan (Figures 9 and 10), the feasibility of stabilising a path between Shelley Beach and the lookout is to be investigated. The need to consider resources and maintenance capabilities has been highlighted in the Final Plan. See also Comment 15, in <i>Camping</i> .	No Yes	2d 1e
21	1 Expressed the view that the installation of any new paths should be only cautiously advanced in the first few years of the Plan to allow concentration on stabilisation and rehabilitation of existing access routes and other sites.	See Comment 19, this Section.	Yes	1d

No	Number of Submissions and Summary of Comment on Draft Management Plan (DMP)	Discussion / Action Taken in Final Management Plan (FMP)	Amend?	Crit.
22	1 Doubted the need for back pack campsites in the Park due to the small distances involved. The submission suggested the recommendation be qualified by "If necessary..." or "Consider...".	See Comment 5, this Section.	Yes	1e
	28.2 Rock Climbing			
1	3 Agreed with the recommendations in this Section.		No	2a
2	1 Sought the addition of the words "low impact" before "camping area" in DMP Rec. 2.	The proposal to construct a Cape camp will not be pursued at this time. Camping in the vicinity of the Cape will be permitted at Dunsy Beach only. This situation will be monitored and if a clear need for an alternative campsite arises, development of a low impact, concealed campsite, back from the coast will be considered.	Yes	1b
3	1 Agreed with DMP Recs. 1 and 2 in this Section.		No	2a
4	1 Felt that access to the viewing points mentioned in DMP Rec. 3 should be on foot only with parking well removed from the cliff face.	This FMP Action has been relocated to <i>Sightseeing and Photography</i> . A designated vista point is proposed to ensure visitors do not endanger climbers. Access will be on foot. This has been clarified in the FMP Action.	Yes	1e
5	3 Disagreed with DMP Rec. 3 in the Section. The following reasons were given in submissions: <ul style="list-style-type: none"> • the erection of any kind of viewing platform would be at odds with the Park's wilderness values • the proposal would encourage irresponsible behaviour and put climbers at risk • climbing is not a spectator sport • there are already natural viewing sites at the top of the Carousel Area and the Black Wall • non-climbing spectators are not causing any problems at present. 	See Comment 4, this Section.	Yes	1e
6	1 Disagreed that permanent anchor points can be seen from the top of the cliffs and argued that the discreet and sensible placement of fixed protection is a part of climbing. The submission also maintained that no marking of climbing routes takes place at WCHNP.	A new FMP Action has been added requiring all climbers to observe the WA Code of Climbing Ethics. This has strict guidelines on such issues.	Yes	1e
7	2 Agreed with DMP Rec. 1 in this Section.		No	2a
8	1 Believed that the placement of permanent anchor points at the designated cliff areas of WCHNP should not be permitted for the life of this Plan.	See Comment 6, this Section.	Yes	1e
9	1 Agreed with DMP Recs. 1 and 3 in this Section.		No	2a

No	Number of Submissions and Summary of Comment on Draft Management Plan (DMP)	Discussion / Action Taken in Final Management Plan (FMP)	Amend?	Cr- it.
10	1 Argued that DMP Rec. 3 should be sensitively implemented if at all. The submission maintained that management actions should "play down" climbing activities due to potential safety problems with spectators.	See Comment 4, this Section.	Yes	1e
	28.3 Hang Gliding			
1	4 Agreed with the recommendations in this Section.		No	2a
2	3 Maintained that as the sport is well regulated by the Hang Gliding Association of WA, that a CALM permit system is not warranted (DMP Rec. 1).	In view of serious problems evident with the draft proposal for Shelley Beach lookout, the Final Plan has been modified to allow for priority use of this site by hang gliders at certain times. As regulation of access to the National Park is the responsibility of CALM and in order to make the arrangement work, a permit system will be essential to protect the safety of hang gliders and other Park users. An alternative carpark and foot access to the lookout are proposed for use at times when hang gliders are using the site.	Yes	1b
3	1 Suggested that an advanced booking system should be used for hang gliders.	See Comment 2, this Section.	Yes	1b
4	2 Agreed with DMP Rec. 2 in this Section.		No	2a
5	1 Agreed with DMP Rec. 1 in this Section.	See Comment 2, this Section.	Yes	1b
6	1 Believed that the only time a permit should be considered is for commercial operations using the Park for schools, instruction, joy rides etc.	See Comment 2, this Section.	Yes	1b
7	1 Agreed with DMP Rec. 5 in this Section suggesting that directional signs for spectators would help ensure the safety of hang gliders during landing.	It is still proposed to provide such areas. See Comment 2, this Section.	Yes	1b
8	1 Queried why hang gliders, but not rock climbers are required to obtain a permit (DMP Rec. 1) and pointed out the difficulty of regulation. Planning of the site was seen as the answer to prevent degradation, unless there is a major competition.	See Comment 2, this Section.	Yes	1b
9	1 Agreed with DMP Recs. 3, 5 and 6 in this Section.	See Comment 2, this Section.	Yes No	1b 2a
10	1 Expressed concern about DMP Rec. 3 in this Section stressing that any hang glider launching ramp would have to be totally unobtrusive, particularly when viewed from Shelley Beach.	The intention was to designate a launching area. This has been clarified in the FMP Action.	Yes	1e

No	Number of Submissions and Summary of Comment on Draft Management Plan (DMP)	Discussion / Action Taken in Final Management Plan (FMP)	Am-end?	Cr-it.
11	1 Maintained that DMP Rec. 5 would require care and close liaison with hang gliders whose needs should take precedence over the general public at this site.	See Comment 2, this Section.	Yes	1b
	29. Model Aeroplane Use			
1	1 Stated that the Shelley Beach lookout is used for flying model aircraft every weekend of the summer and expressed the view that there should be no restrictions on flying. The submitter believed that very little use of Shelley Beach lookout was made by hang gliders during that period.	As indicated in <i>Hang Gliding</i> , in view of serious problems evident with the draft proposal for Shelley Beach lookout, the Final Plan has been modified to allow for priority use of this site by hang gliders at certain times. The lookout will be available for use by aero modellers when not in use by hang gliders. Back Beach will be available for model aeroplane use at all times. These arrangements have been clarified in the Final Plan.	Yes	1b
2	1 Sought access for model aeroplane flying to the south-west facing slope at the end of Lake William Road (the site referred to as "Back Beach" by the hang gliders).	This site will be available for model aeroplane use at all times. An FMP Action has been added to indicate this.	Yes	1b
3	1 Disagreed with DMP Rec. 2 on the grounds that it would cause unnecessary paperwork for CALM and would also be time consuming for users.	In view of the priority use of Shelley Beach lookout by hang gliders, the requirement for aero modellers to obtain a permit has been dropped. The site will be available for their use when not being used by hang gliders.	Yes	1b
4	1 Suggested that model aeroplane use is attractive to Park visitors and supported the provision of parking for spectators at Shelley Beach lookout.		No	2a
5	1 Supported DMP Rec. 3.		No	2a
6	1 Maintained that there is no conflict between model aeroplane users and hang gliders as they "stay out of each others way".	Hang glider pilots have disagreed with this view on safety grounds. See Comment 1, this Section.	Yes	1b
7	6 Agreed with the recommendations in this Section.		No	2a
	30. Motorised Recreation			
1	2 Suggested the addition of a recommendation to read "Minimise damage to tracks by 4WD vehicles by monitoring tyre pressures and reducing to the recommended pressure".	As indicated in FMP Action 1(iv), CALM's preferred approach is through driver education rather than enforcement.	No	2d
2	4 Agreed with the recommendations in this Section.		No	2a
3	1 Agreed with DMP Recs. 1(i), 1(ii), 1(iii) and 3.		No	2a

No	Number of Submissions and Summary of Comment on Draft Management Plan (DMP)		Discussion / Action Taken in Final Management Plan (FMP)	Amend?	Cr. it.
4	1	Suggested that the word "stabilisation" be added after "realignment" in DMP Rec. 3.	This change has been made.	Yes	1d
5	1	Suggested the issue of infringement notices for over-inflation of tyres.	See Comment 1, this Section.	No	2d
6	2	Believed that the use of motor cycles in the Park should be restricted due to damage caused to 4WD tracks.	Road registered motor cycles have access to all public roads in the Park.	No	2d
7	2	Agreed with DMP Recs. 1(i), 1(ii), 1(iii) and 3 in this Section.		No	2a
8	1	Strongly disagreed with the promotion and facilitation of motorised access in the Park as it is inconsistent with the "minimum impact" style of recreation.	CALM's "Recreation, Tourism and Visitor Services Policy" is predicated on the notion of equity for users within reasonable constraints. This Plan attempts to balance the needs of a wide range of user groups. The Park zoning scheme includes significant vehicle free areas (see <i>Zoning</i>).	No	2f
9	1	Agreed with DMP Rec. 2 in this Section.		No	2a
1	22	<p>31. Horse Riding</p> <p>Supported Proposal 1 to disallow horse riding in WCHNP. The following reasons were given in submissions:</p> <ul style="list-style-type: none"> • walkers are put at risk by horses on the same trail • it is dangerous for horses and vehicles to use the same track • horses hooves "cut up" sensitive soil surfaces leading to erosion • horses can access (and therefore cause damage to) more of the Park than can 4WD vehicles • there are alternative areas for horse riding along the coast nearby • horses trample and browse native vegetation • horses introduce nutrients and have the potential to spread soil-borne fungal pathogens such as dieback • horses can introduce and spread weeds both in their droppings and on their coats • horse riders will not always feed their animals on a seed free diet before bringing them into the Park • the proposed trail into WCHNP has existing dieback infections at both ends • rangers are put at risk when they have to confront horse riders who have left authorised trails • usage of firebreaks reduces their trafficability by vehicles, which could lead to dangerous situations during fire fighting operations and increase the likelihood of accidents. • the probable expansion of horse riding with time will lead to greater stress on management resources as well as increasing environmental impacts 	See Comment, next page.		

No	Number of Submissions and Summary of Comment on Draft Management Plan (DMP)	Discussion / Action Taken in Final Management Plan (FMP)	Am- end?	Cr- it.
1 (Co nti nue d)	22 <ul style="list-style-type: none"> • access for horses would contravene the stated role of National Parks • controls would be difficult to implement • horses would cause increased threats to rare fauna species due to introduced weeds, erosion and disease • the recommended trail is an incursion into the proposed natural environment zone • the Park is too small • high levels of Park use already displease some users and the addition of another activity would annoy further • the status of flora and fauna has not been determined for the Park • riding in WCHNP would set a precedent for riding to be permitted in other parks. • horses impact on other Park visitors • hardened surfaces cannot be provided to stop erosion by horses • horse trails can redirect drainage and cause water erosion as well as exposing soil to wind erosion • horse trails can interrupt the water supply to plants further downslope • horse manure adversely alters the composition of the soil and provides opportunities for flies to breed • aesthetically, the presence of horse manure may be unappealing to Park users • feral communities (such as mice, rabbits, cats and foxes) can build up around introduced plants and encourage parasites and disease into the Park • introduction of weeds by horses increases fire risks • horse riders can damage vegetation higher in the canopy than other users (e.g. by braking off horse whips) • the noise of horse and rider and the smell of the horse disrupts the ecosystem • horses are not part of the WA natural environment and have no place in the conservation estate • horse trails require constant maintenance • horses hooves cut through root material • horses can spread diseases other than dieback • allowing horse riding, which is incompatible with the preservation of the environment, would mean national parks would not be meeting the high standard demanded by the community. 	<p>There is a wide range of community opinion on this issue as indicated in the submissions on this Section. Proposal 2 has been adopted in the Final Plan subject to strict conditions. The following changes have been made to the Actions:</p> <ul style="list-style-type: none"> • FMP Action 5 indicates that horse riding will be banned from the Park in the event that unacceptable environmental impacts occur. • FMP Actions 2 and 3 indicate that a single trail will be designated. • FMP Action 4 indicates that a code of ethics will be mandatory. <p>In addition, the background information to this Section has been expanded to provide detail on the kinds of management techniques to be used in order to minimise environmental impacts from horse riding in the Park.</p>	Yes	1a 1b 1d 1e

No	Number of Submissions and Summary of Comment on Draft Management Plan (DMP)	Discussion / Action Taken in Final Management Plan (FMP)	Am- end?	Cr- it.
2	<p>11 Supported Proposal 2 to allow horse riding in WCHNP. The following reasons were given in submissions:</p> <ul style="list-style-type: none"> • there should be equitable access to the Park for all user groups • this Management Plan will become the model for others and thus it is essential that we "get it right" from the start • horses are regarded as authorised vehicles allowable on the road system and should be given the same access as other vehicles • school groups, road construction, vehicles and native animals also lead to the spread of dieback disease often to a greater extent than horses • the majority of seed species found in horse manure will not grow on the south coast without artificial fertiliser • a number of horse riders have used WCHNP for many years without detracting from the aesthetic beauty of the Park area • most horse owners have a far greater understanding and knowledge of nature and the environment than many other Park users and thus have greater concern and appreciation for areas set aside for recreation • 4WD vehicles and motor bikes cause greater degradation of sand tracks than horses and yet these uses are provided for • provision for horse riders will have to be made eventually • horses have not caused erosion in the Park in 50 years of use • there is no evidence that horses introduce weeds on the south coast through their droppings • many people with a disability that does not allow them to walk the area can do so on the back of a horse • horses hooves are self cleaning due to flexure of the hoof (unlike walking boots) • fewer horse riders than 4WD vehicles use the Park • horse riders in the Park stay on the trails as it is quite hazardous to ride through the low scrub • as horse riders only use the Park for a day, the horses do not graze or trample the vegetation and no feed is brought into the Park • local horses are fed on local pasture only, not grains. As kangaroos also feed on pasture and then return to the Park, horse droppings would not introduce any new weed seeds • eskies with beer in them cannot be carried on the back of a horse, but can in a 4WD • potential safety conflicts are a long way off given present levels of use • if horses are confined to designated paths, the level of seed germination may be manageable. 	See Comment 1, this Section.	Yes	1a 1b 1d 1e
3	1 Agreed in principle with the proposal to allow horse riding in the Park.	See Comment 1, this Section.	Yes	1a 1b 1d 1e

No	Number of Submissions and Summary of Comment on Draft Management Plan (DMP)	Discussion / Action Taken in Final Management Plan (FMP)	Am-end?	Cr-it.
4	1 Argued that there is no point in declaring national parks if the rules are too restrictive, but agreed that unimpeded access to horse riders was an unrealistic expectation given the need to preserve native bushland, and believed a compromise must be reached.	The Actions in this Section are designed to achieve this end. See Comment 1, this Section.	Yes	1a 1b 1d 1e
5	1 Sought liaison with horse riding organisations in the implementation of DMP Rec. 6.	The need for involvement of equestrian groups in monitoring has been added to FMP Action 2.	Yes	1d
6	1 Believed that because CALM employees rarely ride and frequently drive 4WD vehicles, they tend to have a biased view.	CALM discusses management proposals with user groups including horse riders.	No	2d
7	1 Sought trails for use by walkers and riders only throughout WCHNP.	CALM's "Recreation, Tourism and Visitor Services Policy" is predicated on the notion of equity for users within reasonable constraints. This Plan attempts to balance the needs on a wide range of user groups. The Park zoning scheme includes significant vehicle free areas (see <i>Zoning</i>).	No	2f
8	1 Maintained that horses should be allowed on designated 4WD tracks.	See Comment 1, this Section.	Yes	1a 1b 1d 1e
9	1 Believed the use of horses in the Park should be restricted as much as possible due to damage to tracks and the spread of weed seeds.	See Comment 1, this Section.	Yes	1a 1b 1d 1e
10	1 Queried who would define "environmentally acceptable and compatible" in DMP Rec. 1(i).	Such decisions are based on discussions with a wide range of community groups for example, through the planning process.	No	1b
11	1 Found DMP Rec. 2 to be unacceptable on the grounds that horse riders are taxpayers.	CALM's "Recreation, Tourism and Visitor Services Policy" embraces the "User Pays" principle where possible. It is unlikely that the proposed works could be funded from Park budgets.	No	2f
12	1 Agreed with DMP Recs. 3 and 4 in this Section.		No	2a
13	1 Argued that DMP Rec. 5 is totally impractical and that there is no evidence to suggest that horses have spread weeds in parks.	There is a wide range of community opinion on this issue as indicated in the submissions to this Section, however, the Rec. has not been included in the FMP as it is felt that such issues should be dealt with in the code of ethics for horse riders.	Yes	1b

No	Number of Submissions and Summary of Comment on Draft Management Plan (DMP)	Discussion / Action Taken in Final Management Plan (FMP)	Amend?	Cr- it.
14	1 Accepted that 4WD vehicles contribute to weed dispersal and off-track damage to an equal if not greater extent than horses.		No	2b
15	1 Had problems accepting horses in the "Natural Environment" Zone and maintained if horses were to be allowed, a suitable trail should be found in the Recreation Zone.	Alternatives were considered in the planning process but the proposed alignment is considered to be the best available from both user and management perspectives.	No	2f
16	1 Felt that the proposed bridle trail was an excellent track but requested that the track to Lowlands Beach also remain open for horses as it provides access to horse riding areas to the west of WCHNP. The submission argued that if the track is closed, riders at the Bornholm end of the Park would have only one trail to ride on.	As indicated in the submissions on this Section, there is a wide range of community views on this issue. The western end of the Natural Environment Zone is to be maintained both vehicle and horse free.	No	2e
17	1 Sought access to Hortins Road and Shelley Beach for horse riders, suggesting this is no less safe than other roads on which horses are ridden.	It is CALM's responsibility to provide safe access for users. This cannot be accommodated on the section of Shelley Beach Road within the Park.	No	2f
18	1 Requested liaison between local horse riders and the NPNCA about education and care of the Park with regards to horse riding and conservation.	The comments made on this Section will be referred to the NPNCA.	No	2c
19	1 Believed it would be impossible to police Proposal 2, DMP Rec. 5.	See Comment 13, this Section.	Yes	1b
20	1 Suggested that horse riding trails and walking tracks could be combined.	Bushwalking groups have expressed a strong preference for separate trails as indicated in Comment 1, this Section and other parts of this document.	No	2e
21	1 Stated that most equestrians would be satisfied with 2-3 hours in the Park alleviating the need for tethering and watering points (DMP Rec. 2) or to bring food in (DMP Rec. 5).	Equestrian groups are to be involved in the implementation of FMP Action 2, as indicated. See also Comment 13, this Section.	No Yes	2d 1b
22	1 Pointed out that horses are very susceptible to sudden changes in their grain rations, making DMP Rec. 5 impractical except for horses on very low grain rations.	See Comment 13, this Section.	Yes	1b
23	1 Strongly supported Proposal 2, DMP Rec. 2.		No	2a
32. Pets				
1	9 Agreed with the recommendations in this Section.		No	2a

No	Number of Submissions and Summary of Comment on Draft Management Plan (DMP)	Discussion / Action Taken in Final Management Plan (FMP)	Am-end?	Cr-it.
	33. Recreational Facilities			
1	1 Expressed concern about the provision of increased access and parking facilities in the vicinity of Golden Beach and the Steps as these beaches have in the past been frequented by moulting Fiordland Penguins. It was suggested that if these birds still come ashore, then special management provisions will be required.	This information will be used in choosing suitable carpark sites and access alignments. A General Action has been added to this Section to highlight the need to consider flora and fauna occurrences in the siting of recreational facilities.	Yes	1a
2	1 Cautioned that WCHNP is a small area not suitable for development or it will resemble Torndirrup NP and lose the "low key" image being promoted.	The Actions in this Plan are designed to avoid this possibility as indicated in <i>Regional Context</i> and <i>Zoning</i> .	No	2d
3	1 Offered the assistance of hang gliders in the development of a concept plan for the "Back Beach" area.	The assistance of such groups welcomed and is integral to the implementation of this Plan as indicated in <i>Liaison and Community Involvement</i> .	No	2d
4	3 Agreed with DMP General Recs. 1-3.		No	2a
5	1 Maintained that all carparks should be as unobtrusive as possible.	This is the intention as indicated in <i>Landscape</i> .	No	2d
6	1 Expressed the view that the greatest destruction at Shelley Beach has not been from camping but from CALM's clearing of the creek west of the road.	The "clearing" referred to was to remove weeds (including the declared Arum Lily) from the site in accordance with Agriculture Protection Board requirements and the Actions in <i>Weeds</i> .	No	2d
7	1 Stressed the need for flexibility as visitor numbers can change dramatically over 10 years.	This is recognised in FMP General Action 4.	No	2d
8	1 Suggested CALM seek advise from local fishermen about the redevelopment of Shelley Beach.	Local fishers were consulted a number of times in the preparation of the Site Development Concept Plan. This liaison is ongoing.	No	2d
	Fig 9. Shelley Beach Concept Plan			
1	2 Sought the following changes to Fig 9: <ul style="list-style-type: none"> • angle parking for ease of vehicle access • no provision for buses or long vehicles. 	Figure 9 is a concept plan only and this has been clarified in the text. Detailed development plans will be produced prior to any construction. Details such as angle parking will be considered at that time. Buses and long vehicles cannot be accommodated due to site restrictions.	Yes No	1e 2c 2d

No	Number of Submissions and Summary of Comment on Draft Management Plan (DMP)	Discussion / Action Taken in Final Management Plan (FMP)	Amend?	Cr- it.
2	2 Maintained that Fig 9 may need some adjustments to cope with peak usage.	There is a limited area available for development and thus site capacity may be exceeded at some times. This has been clarified in the background information. The Plan makes maximum use of the area available for vehicles and pedestrians.	Yes	1e
3	1 Stated that the proposed toilet at Shelley Beach would have to be a sealed vault type as it is located too close to the creek.	The toilet shown exists on site at present. A self-composting toilet will be installed when resources permit. This has been clarified in Figure 9.	Yes	1e
4	3 Believed the proposed toilet to be too close to the stream which is used for drinking water.	See Comment 3, this Section.	Yes	1e
5	1 Recommended that the two parking bays allocated for expansion be developed along with the 14 other bays and that additional parking bays be considered to accommodate peak usage periods.	See Comment 2, this Section.	Yes	1e
6	1 Maintained that the provision of small picnic areas at this site will lead to destruction of vegetation and preferred enlargement of the main recreation area.	The small spaces shown on the plan are already cleared. Development will be adapted to the site to minimise vegetation disturbance.	No	2d
7	1 Suggested rehabilitation of the creek west of the road.	Rehabilitation following removal of weeds from this site will be in accordance with the Actions in <i>Rehabilitation</i> .	No	2d
8	1 Disagreed with relocation of the fish loading bay for the following reasons: <ul style="list-style-type: none"> • the current bay is close to the creek for ease of washing fish and equipment • the banks of the existing bay are stabilised by kikuyu grass which stops erosion by the sea and wind • the new bay faces the prevailing weather • relocation of the bay would necessitate the clearing of bush which is hard to establish in this area • the area of the new site would have to be larger than that shown to allow sufficient turning space. 	Figure 9 is a concept plan only and this has been clarified in the text. The current fish loading bay impinges upon the limited space available for recreational facilities. Detailed development plans will be produced in liaison with the commercial fishers at the site prior to any construction.	Yes No	1e 2c
9	1 Provided an alternative concept plan.	The ideas in this plan will be considered in the production of the detailed development plan for the site.	No	2c
10	1 Maintained that insufficient parking is provided in this concept plan and suggested parking be extended towards the fisher's camp.	See Comment 2, this Section.	Yes	1e

No	Number of Submissions and Summary of Comment on Draft Management Plan (DMP)	Discussion / Action Taken in Final Management Plan (FMP)	Am-end?	Cr-it.
11	1 Believed the path to the lookout is not needed and should be closed.	A pedestrian link between Shelley Beach and the Lookout is considered desirable as it would provide a link to the Bruce Tarbotton walk and the proposed coastal path. Demand for this link is to be assessed. As indicated in Figures 2 and 10, it will only be developed if feasible and within the constraints of resources and maintenance capability.	No	2d
12	1 Cautioned against developing too close to the beach due to possible storm damage.	The concept plan has been designed to maximise set-back from the beach within site constraints.	No	2d
Fig 10. Shelley Beach Lookout Concept Plan				
1	1 Sought to increase the area available for landing hang gliders at Shelley Beach lookout by moving the carpark further down the hill. Insufficient landing area was seen as a potential danger to spectators.	In view of the serious problems evident with the draft proposals for Shelley Beach lookout, the Final Plan has been modified to allow for priority use of this site by hang gliders at certain times. An alternative carpark and foot access to the lookout are proposed for use at times when hang gliders are using the site.	Yes	1b
2	1 Sought to increase the area available for landing of model aeroplanes at Shelley Beach lookout by moving the carpark further down the hill.	The proposals for this site have been modified as indicated in Comment 1, this Section. Reduced provision for cars will increase the landing area available at the lookout which will be available for aero modellers when not in use by hang gliders.	Yes	1b
3	1 Made the following comment on Fig 10: <ul style="list-style-type: none"> • the access road is unsuitable for long vehicles, there being no indication of the intention to upgrade the road • hang gliders will have to land over parked vehicles, a situation which has already led to accidents • the information panel will impair landings by hang gliders. 	See Comment 1, this Section. The information will be provided in a manner which does not compromise hang glider safety as indicated in FMP <i>Hang Gliding</i> Action 8.	Yes No	1b 2d
4	1 Maintained that the extension of car parking on the south side of the hill as proposed would dangerously interfere with air flow over the hill and increase the risk of collision with vehicles. Extension of the car park west towards the toilet was proposed.	See Comment 1, this Section.	Yes	1b
5	1 Preferred a limestone pad to a launch ramp as variable wind directions require different launch points.	The intention was to designate a launching area. This has been clarified in the Final Plan and will be discussed with hang gliders in the production of a detailed site development plan.	Yes	1e
6	1 Argued that there is insufficient space for hang gliders to land and asked whether angle parking had been considered.	See Comment 1, this Section.	Yes	1b

No	Number of Submissions and Summary of Comment on Draft Management Plan (DMP)	Discussion / Action Taken in Final Management Plan (FMP)	Amend?	Cr- it.
7	1 Maintained that Fig 10 may need some adjustments to cope with peak usage.	See Comment 1, this Section.	Yes	1b
8	3 Believed the concept plan to be impractical as more area needs to be allocated for hang gliders to operate in safety.	See Comment 1, this Section.	Yes	1b
9	1 Made the following points: <ul style="list-style-type: none"> • access would be difficult for the mixture of vehicles proposed • angle parking would be preferable • there are conflicts of space and area caused by different recreational pursuits • siting of facilities needs to be reviewed to obtain the best mix for long term use. 	See Comment 1, this Section.	Yes	1b
10	1 Suggested that any plantings in the vicinity should be kept low as gliders occasionally overshoot the normal landing area.	This suggestion will be incorporated in any rehabilitation prescriptions for the area.	No	2c
11	1 Sought a change in the location of the proposed information board.	See Comment 3, this Section.	No	2d
12	1 Agreed with the location of the western lookout and suggested it would need to be defined by low logs embedded in the ground. The submission argued that the eastern lookout is in a dangerous position and that only the western lookout should be developed.	Figure 10 is a concept plan only and this has been clarified in the text. Detailed development plans will be produced in liaison with hang gliders prior to any construction.	Yes No	1e 2c
13	1 Supported the provision of a hang glider ramp as it would result in a smaller area of vegetation being walked on. The submission provided suggested ramp designs and offered assistance with funding of the ramp.	See Comment 5, this Section.	Yes	1e
14	1 Argued that the access road is unsuitable for long vehicles and coaches.	Long vehicles will be accommodated at an alternative carpark to be constructed. See also Comment 1, this Section.	Yes	1b
15	1 Sought a larger area for the landing of hang gliders to reduce accident possibility.	See Comment 1, this Section.	Yes	1b
16	3 Provided a modified concept plan for the site.	See Comment 1, this Section.	Yes	1b
17	1 Disagreed with the provision of a launching ramp at the site, maintaining that it would greatly limit take-off possibilities and present a hazard to hang gliders. The submission argued that take-off areas are only used for 4 months of the year and so "stand up well".	See Comment 5, this Section.	Yes	1e

No	Number of Submissions and Summary of Comment on Draft Management Plan (DMP)	Discussion / Action Taken in Final Management Plan (FMP)	Amend?	Crit.
	Fig 11. Dunskey Beach Concept Plan			
1	1 Maintained that Figure 11 may need some adjustments to cope with peak usage.	The site has a finite capacity but there is some scope for expansion if there is a demand. However, site capacity may still be exceeded at some times. This has been clarified in the text.	Yes	1e
2	4 Stated that the area of the proposed toilet is wet in winter and suggested it be relocated.	Figure 11 is a concept plan only and this has been clarified in the text. The location of the wet area will be considered when a detailed site development plan is produced.	Yes No	1e 2c
3	3 Argued that the proposed location of the beach access steps is unstable and would be liable to erosion and storm damage.	Access from the carpark to the beach is an integral part of the concept for the site. The exact location and construction techniques will be determined on site to maximise stability.	No	2d 2c
4	2 Suggested angle parking is required for access.	This suggestion will be considered in the production of a detailed site development plan for the area.	No	2c
5	1 Expressed the view that this carpark should be deleted unless 2WD access to Dunskey Beach is established due to the potential for damage to sand tracks caused by construction equipment.	Light equipment and hand tools only will be used in the construction work at this site.	No	2d
	34. Visitor Safety			
1	4 Agreed with the recommendations in this Section.		No	2a
2	4 Disagreed with DMP Rec. 3 suggesting that alternatives be considered to allow retention of the trees.	Increasing volumes of traffic and the paramount requirements of safety leave no feasible alternative to this proposal.	No	2f
3	1 Stated that a permanent ranger is required to implement these recommendations.	The appointment of a permanent ranger is a high priority as indicated in FMP <i>Staffing</i> Action 1.	No	2d
4	1 Queried what standards CALM will apply in implementation of DMP Rec. 4.	Existing roads and tracks are to be used for evacuation purposes. The FMP Action has been amended to make this clear.	Yes	1e
5	1 Maintained that potential dangers mentioned in DMP Rec. 6 need to be defined in relation to recommended speeds etc.	Factors such as recommended speeds will be considered in the detailed analysis required to implement the FMP Action.	No	2c
6	1 Pointed to safety problems when vehicles meet on the Bornholm track.	This will be considered in the implementation of FMP Action 6.	No	2d

No	Number of Submissions and Summary of Comment on Draft Management Plan (DMP)	Discussion / Action Taken in Final Management Plan (FMP)	Am-end?	Cr-it.
7	1 Suggested the addition of a recommendation such as "The Department will liaise with user groups and the local SES in order to ensure the establishment of a suitable emergency rescue plan".	A document covering this need already exists as indicated in the background to this Section.	No	2d
8	1 Queried the availability of specialised rescue equipment.	Rescue equipment is the responsibility of the SES although CALM maintains some equipment at Torndirrup NP. This has been clarified in the background information.	Yes	1e
9	1 Agreed with DMP Recs. 1(i) and 1(ii) in this Section and urged the involvement of climbers in the development of safety plans. The submission stated support for any initiatives to develop climber registration facilities.	Liaison with user groups including climbers is ongoing as indicated in <i>Liaison and Community Involvement</i> .	No	2d
10	2 Agreed with DMP Rec. 6 in this Section.		No	2a
11	1 Agreed with DMP Rec. 4 in this Section.		No	2a
12	1 Hoped that CALM would not erect steel cages to stop people falling off cliffs.	Any safety measures will be "low key" in keeping with the overall concept for the Park.	No	2d
13	1 Suggested that Hortins Road should have prominent signs warning of its narrowness and the possibility of oncoming traffic.	Mention of road safety signs has been added to FMP Action 6. Safety signs are currently in place on Shelley Beach Road.	Yes	1d
	Community Relations (General)			
1	1 Was particularly impressed with this Chapter.		No	2a
2	1 Sought a high priority for the recommendations in this Chapter.	All Actions in this Plan are subject to the allocation of priorities as resources permit as indicated in <i>Management Priorities</i> .	No	2d
	35. Information, Education and Interpretation			
1	8 Agreed with the recommendations in this Section.		No	2a
2	1 Recommended that brown and white tourist signs directing people to WCHNP be installed on South Coast Highway and Lower Denmark Road.	The installation of such signs is likely to lead to a significant increase in traffic in the Park and will therefore only be considered in the implementation of FMP Action 2 once facilities have been developed to provide for increased numbers of visitors.	No	2d

No	Number of Submissions and Summary of Comment on Draft Management Plan (DMP)	Discussion / Action Taken in Final Management Plan (FMP)	Am- end?	Cr- it.
3	1 Agreed with the recommendations in this Section provided there is a permanent ranger and sufficient budget for the Park.	The appointment of a permanent ranger is a high priority as indicated in FMP <i>Staffing</i> Action 1. The need for resources is addressed in <i>Funding</i> .	No	2d
4	1 Saw a need for unobtrusive interpretative facilities.	All facilities proposed are to be developed in a "low key" manner as indicated throughout this Plan.	No	2d
5	1 Suggested a cleared area be established at the Park entrance to accommodate an information board displaying Park rules and a fire warning board.	A low key entry station and information display is proposed on Shelley Beach Road as indicated in Figure 8.	No	2d
	36. Educational Groups			
1	7 Agreed with the recommendations in this Section.		No	2a
2	1 Sought the provision to educational groups of information on dieback hygiene for both walkers and vehicles.	Actions covering the provision of information on dieback disease are located in <i>Plant Disease</i> .	No	2d
3	1 Suggested the addition of a recommendation such as "Draw up guidelines which differentiate between educational groups and commercial operators involved in offering environmental education packages". Concern was expressed that commercial operators are avoiding fees by claiming to run educational tours.	This Section refers to bona fide educational uses only.	No	2d
	37. Liaison and Community Involvement			
1	1 Sought a continuing role for local bushwalkers in the evolution of the Park plan.	Liaison with all user groups is ongoing, as indicated in this Section.	No	2d
2	7 Agreed with the recommendations in this Section.		No	2a
3	1 Sought more opportunity for community involvement in Park management.	The Actions in this Section are designed to ensure continuing community involvement.	No	2d
4	1 Offered assistance from commercial fishers with maintenance of camping and picnic areas.	The assistance of Park users will be welcome as indicated in this Section.	No	2d
5	1 Offered the assistance of rock climbers in the implementation of the Plan and expressed a desire to formalise contacts and open lines of communication on issues of common concern.	See Comments 1 and 4, this Section.	No	2d
6	1 Supported increased liaison between CALM and specific user groups.	See Comment 1, this Section.	No	2d

No	Number of Submissions and Summary of Comment on Draft Management Plan (DMP)	Discussion / Action Taken in Final Management Plan (FMP)	Am-end?	Cr-it.
7	1 Pointed out that although rangers should control activities within the Park, this must be done in a friendly, non-aggressive manner resulting in the public's voluntary co-operation.	The training of staff in interpersonal skills is an ongoing commitment, however CALM's preferred approach is by education rather than enforcement.	No	2d
8	1 Stressed that there is a continuing need for close liaison between CALM and local Noongar people.	See Comment 1, this Section.	No	2d
9	1 Stated that CALM should seek the assistance of Noongar people in Park management activities.	See Comment 4, this Section.	No	2d
38. Commercial Visitor Services				
1	5 Agreed with the recommendations in this Section.		No	2a
2	1 Queried whether DMP Rec. 1(i) is being implemented at present and also sought clarification of the status of Woodbury Boston Environmental School in this regard.	Progressive implementation of this FMP Action has been occurring for some time.	No	2a
		The activities of Woodbury Boston School are covered under <i>Educational Groups</i> .	No	2d
3	1 Suggested that a special licence for an operator in WCHNP would raise suspicion that the reason that Park roads were 4WD only was to enable a special deal to be given to the right person.	Any such licence, or licences will be open for public tender according to Government Policy. The FMP Action has been amended to indicate the possibility of more than one operator being licensed.	Yes	1e
39. Commercial Fishing				
1	6 Agreed with the recommendations in this Section.		No	2a
2	1 Suggested that allowing a commercial fishing camp at Shelley Beach but not public camping would cause friction and that ways to minimise this should be sought.	In response to the submissions received, this proposal has been modified to provide for a limited number of campsites at Shelley Beach. See FMP <i>Camping</i> Action 3. Impacts at the the site will be monitored during the life of this Plan and modifications made to this arrangement if necessary.	Yes	1b
3	1 Put the view that commercial fishing should be allowed to continue but will lead to conflict.	The Actions for redevelopment of the Shelley Beach site are designed to minimise potential conflict.	No	2d
4	2 Queried the situation with other large vehicles with respect to DMP Rec. 6.	No other large commercial vehicles will be permitted access beyond Shelley Beach lookout. This has been clarified in <i>Access</i> .	Yes	1e

No	Number of Submissions and Summary of Comment on Draft Management Plan (DMP)	Discussion / Action Taken in Final Management Plan (FMP)	Am-end?	Cr- it.
5	1 Agreed with DMP Rec. 6 in this Section and suggested that maximum speed restrictions also apply.	Fish trucks will be subject to the same speed restrictions as other vehicles on the road as governed by the Road Traffic Act.	No	2c
6	1 Disagreed with DMP Rec. 1(ii) on the grounds that access is via a public road and other users do not require a permit.	The requirement for a permit is Government Policy.	No	2c
7	1 Sought clarification of the conditions mentioned in DMP Rec. 1(iii).	This FMP Action is adapted from the South Coast Regional Management Plan. Further detail is provided in FMP Action 3, Figure 9 and the sections on <i>Camping and Recreational Facilities</i> .	No	2d
8	1 Argued that DMP Rec. 3 is unnecessary as all the required equipment already fits in the available space.	The FMP Action is designed to provide management directions for the next 10 years as indicated in <i>Term of this Plan</i> .	No	2d
9	1 Agreed with DMP Rec. 4 provided it is on the seaward side of the road and suggested a transportable lookout structure be built and removed at the end of each fishing season.	The bay is proposed for location on the seaward side of the road. This has been clarified in the FMP Action. A detailed site plan for the proposed lookout will be developed in conjunction with the commercial fishers.	Yes No	1e 2c
10	1 Disagreed with DMP Rec. 5 as fishing at the northern end of the beach is rare and does not interfere with other users. The submission stated that the fishing is a tourist attraction, not a menace.	Although it may be uncommon, the landing of fish at the northern end of Shelley Beach does have potential to conflict with other Park users and should be discouraged. The tourist attraction of commercial fishing is recognised in this Section.	No	2d
11	1 Maintained that recreational campers are more acceptable in a national park than commercial fishers and that commercial fishing should be banned in the Park.	Limited camping for recreational users of the Park is to be provided at Shelley Beach. See Comment 2, this Section.	Yes	1b
12	1 Disagreed with DMP Rec. 1(ii) as commercial fishers opened up the area and are carrying on a traditional occupation.	See Comment 6, this Section.	No	2c
13	1 Disagreed with DMP Rec. 1(iii) as it is a Proclaimed Fishing Zone.	As the fishing camp is located within the National Park, it is essential that its negative impact on the Park environment and on other visitors be minimised.	No	2f
14	1 Suggested that as there are other endorsements for fishing in the area, there could be a diverse group of fisheries operating there.	Due to site constraints, CALM will oppose the establishment of any further commercial fishing enterprises based in the Park as indicated in FMP Action 7.	No	2d
15	1 Stated that the Fisheries Department controls fishing in marine parks.	There are currently no marine parks in this area.	No	2c

No	Number of Submissions and Summary of Comment on Draft Management Plan (DMP)	Discussion / Action Taken in Final Management Plan (FMP)	Am-end?	Cr-it.
16	1 Stated the commercial fishing can occur at any time of the year, not just in the peak season.	This is true, but the allocation of priority to this use is restricted to the period from 15 February to 30 April. This has been clarified in the text.	Yes	1e
17	1 Opposed DMP Rec. 6 unless other commercial vehicles have to do the same.	See Comment 4, this Section.	Yes	1e
18	1 Agreed with DMP Rec. 2 in this Section.		No	2a
19	1 Suggested that DMP Rec. 1(iv) is the responsibility of the Fisheries Department.	This is acknowledged in the background information and the Rec. omitted from the FMP.	No	2d
20	1 Expressed concern about CALM's liability in the event of an accident with respect to DMP Rec. 6.	FMP Action 6 is designed to limit the chance of an accident occurring. CALM's liability may increase without this provision.	No	2d
21	1 Pointed out with respect to DMP Rec. 7 that CALM can oppose the granting of salmon beach endorsements.	The FMP Action refers to any new commercial fishing operations proposed to utilise a base in the Park and has been reworded accordingly.	Yes	1e
22	1 Stated that there are at least 20 licensed estuarine fishers entitled to fish WCHNP.	A number of Actions in this Section are designed to minimise the impact of commercial fishing on the Park and its visitors.	No	2d
23	1 Maintained that no licence should be issued for commercial fishing at Shelley Beach or in any national park.	FMP Action 7 indicates that CALM would oppose the granting of any new licence based in WCHNP. Other Parks are outside the scope of this Plan.	No No	2d 2c
24	1 Suggested the addition of background information defining the framework of management for commercial fisheries in the Park.	Such background is provided in the Department's Policy on "Access for Commercial Fishing through CALM Lands". This has been clarified in the text.	Yes	1e
25	1 Found the objective too negatively phrased and suggestive of conflict. Alternative wording was proposed.	There is a wide range of community opinion on the issue of commercial fishing based in National Parks as indicated in submissions to this Section. The objective indicates the potential for positive and negative outcomes.	No	2e
26	1 Pointed out the existence of two other licensed herring fishers in the Park and suggested these be noted even though they have not conducted operations as yet.	These have been mentioned in the background information.	Yes	1b

No	Number of Submissions and Summary of Comment on Draft Management Plan (DMP)	Discussion / Action Taken in Final Management Plan (FMP)	Amend?	Crit.
27	1 Pointed out that on infrequent occasions through the salmon "back run", fish are available for capture well after May and are opportunistically fished.	This fact has been added to the text. See also Comment 16, this Section.	Yes	1e
28	1 Disagreed that the commercial fisher's camp detracts from the aesthetics of the Shelley Beach site, maintaining that in the context of the history and culture of the south coast, it is aesthetically very pleasing. The submission argued that the camp is entirely consistent with the purpose of a national park which aims to preserve "any feature of archaeological, historical or scientific interest".	There is a wide range of community opinion on this issue as indicated in the submissions on this Section.	No	2e
29	1 Maintained that the presence of the fishers and their operations enhance the experience of visitors to the Park and suggested this be noted in the Plan.	This is acknowledged in both the background information to this Section and in FMP Action 9.	No	2d
30	1 Agreed that Shelley Beach is a popular recreation site during Easter and the March long weekend and suggested the allocation of additional rangers at these times.	The allocation of rangers is outside the scope of this Plan.	No	2c
31	1 Found the phrase "it leads to...potential competition with recreational fishers and other visitors" unclear. The submission pointed out that both commercial and recreational fishers are subject to catch allocations determined by the Minister for Fisheries on the basis of fairly apportioning salmon catches.	The statement refers to general overcrowding at the site.	No	2d
32	1 Pointed out that minor vandalism of fishing equipment has occurred only four times in the last 20 years and suggested this be mentioned.	Vandalism was mentioned in the DMP background information however, information on the frequency has been added.	Yes	1b
33	1 Argued that the interest to visitors of the commercial fishing operation is actual, not potential.	The word "potential" has been deleted.	Yes	1e
34	2 Mentioned the existence of a Draft Policy on access for commercial fishing through CALM managed lands.	The background information has been amended to include mention of this document, now in final form.	Yes	1e
35	1 Agreed with DMP Rec. 1(i) and suggested a dispute resolution mechanism be adopted but anticipated that most problems could be solved by discussions between the two parties.	Such issues are covered by the Department's Policy on "Access for Commercial Fishing through CALM Lands". This has been mentioned in the text.	Yes	1e
36	1 Agreed with DMP Recs. 1(ii), 1(iii) and 8 in this Section.		No	2a
37	1 Pointed out that commercial fishing occurs on waters adjacent to the Park, not in it and suggested the Plan make reference to the Report of the Recreational Fishing Advisory Committee Working Group in this regard.	Mention of the Report has been added to the background information of <i>Recreational Fishing</i> .	Yes	1e

No	Number of Submissions and Summary of Comment on Draft Management Plan (DMP)	Discussion / Action Taken in Final Management Plan (FMP)	Am-end?	Cr- it.
38	1 Suggested that implementation of DMP Rec. 2 be discussed with the commercial fishers themselves and that their offer of assistance with maintenance of the Shelley Beach site be acknowledged in the Plan.	FMP Action 2 was discussed with the commercial fishers prior to release of the Draft Plan. Liaison with all user groups is ongoing as indicated in <i>Liaison and Community Involvement</i> . As indicated in this document, numerous offers of assistance have been made and are welcome but not separately acknowledged in the Plan.	No No	2d 2c
39	1 Agreed with DMP Rec. 3 but favoured the use of the word "managing" rather than "restricting". The submission urged consultation with the commercial fishers in implementation of the recommendation.	The FMP Action has been reworded along these lines. As indicated in the FMP Action, the commercial fishers will be involved in its implementation.	Yes No	1d 2d
40	1 Agreed with DMP Rec. 4 provided it is on the seaward side of the road.	The bay is proposed for location on the seaward side of the road. This has been clarified in the FMP Action.	Yes	1e
41	1 Disagreed with DMP Rec. 5 as fish are only infrequently captured at the northern end of the beach.	Although it may be uncommon, the landing of fish at the northern end of Shelley Beach does have potential to conflict with other Park users and should be discouraged.	No	2d
42	1 Questioned the need for DMP Rec. 6 given that it is standard practice.	The FMP Action refers to making this a formal requirement on the permit to transport the catch through the Park.	No	2d
43	1 Did not support DMP Rec. 7, arguing that new proposals should be judged on their merits. The submission suggested this be done through consultation between CALM, Fisheries Department and the WA Fishing Industry Council, but accepted that CALM and the NPNC have the final say.	The FMP Action referred to proposals involving a base in the National Park. Proposals involving day use only would be considered on their merits as suggested. This has been clarified in FMP Action 7 and in a new FMP Action added to the Section.	Yes	1b
44	1 Maintained that the commercial fishers have benefited the Park by maintaining the Shelley Beach site and acting as "unofficial rangers" and this should be acknowledged in the Plan.	Numerous community groups have performed volunteer work in the Park. Acknowledgment of their contribution has been added to <i>Liaison and Community Involvement</i> .	Yes	1b
45	1 Included background information on commercial fishing on the south coast.	The information provided will be retained for reference by CALM staff.	No	2c
46	1 Sought assurance that implementation of DMP Rec. 4 would provide a satisfactory view for commercial fishers.	See Comment 40, this Section.	Yes	1e
47	1 Expressed the view that it will not always be practical to land catches at the southern end of Shelley Beach (DMP Rec. 5) and this should not be an accepted "code of practice".	See Comment 41, this Section.	No	2d

No	Number of Submissions and Summary of Comment on Draft Management Plan (DMP)	Discussion / Action Taken in Final Management Plan (FMP)	Amend?	Crit.
48	1 Found DMP Rec. 7 unclear and suggested it be rephrased. The submission pointed to the difference between waters adjacent to the Park under Fisheries Department jurisdiction and where no access controls currently apply for commercial fishers, and the Park itself where access is controlled by a permit. DMP Rec. 7 was not accepted as it was felt that the case for access restrictions on commercial fishers has not been adequately and objectively assessed in the DMP.	See Comment 43, this Section.	Yes	1b
	40. Gravel and Industrial Minerals			
1	1 Supported the balanced approach taken in this Section.		No	2a
2	5 Agreed with the recommendations in this Section.		No	2a
3	1 Sought deletion of DMP Rec. 5 and substitution of the words "Disallow access to any road-making materials in the Park except for management purposes". The submission stated that to do otherwise would be counter to the stated role of national parks.	As indicated in the Draft Plan, the Shire of Albany has requested access to road-making materials from an area within the Park. Liaison between CALM and the Shire over this issue will be essential to ensure protection of the Park.	No	2d
4	1 Agreed with DMP Rec. 2 in this Section.		No	2a
5	1 Disagreed with DMP Rec. 5, suggesting that no exploitation of gravel or other industrial minerals by the Shire or other outside interest should take place in the Park.	See Comment 3, this Section.	Yes	1b
6	2 Sought a ban on gravel extraction.	See Comment 3, this Section.	Yes	1b
7	3 Agreed with DMP Rec. 6 in this Section.		No	2a
8	1 Argued that there should be no further gravel extraction in WCHNP for the following reasons: <ul style="list-style-type: none"> • it would contribute to the spread of dieback disease as no hygiene measures are fool proof • revegetation after extraction never recreates a comparable ecosystem, at best minimising the visual impact. 	See Comment 3, this Section. Actions in this Section and in <i>Plant Diseases and Rehabilitation</i> cover the points raised.	Yes No	1b 2d
9	1 Agreed with DMP Rec. 6 because it would reduce dieback spread and has long term benefits in terms of maintenance costs.		No	2a
10	1 Disagreed with the extraction of gravel in the Park for any reason, stating that supplies should be obtained from outside the Park.	See Comment 3, this Section. Wherever practicable, supplies will be obtained from outside the Park, as indicated in FMP Action 2.	Yes No	1b 2d

No	Number of Submissions and Summary of Comment on Draft Management Plan (DMP)	Discussion / Action Taken in Final Management Plan (FMP)	Amend?	Cr. it.
11	1 Disagreed with the objective of minimising the impact of extraction on the grounds that no extraction should be allowed in the Park. The submission argued for the use of gravel from outside the Park with particular attention to dieback disease hygiene principles.	See Comment 10, this Section. Actions in this Section and in <i>Plant Diseases</i> cover the concerns raised about dieback disease.	Yes No	1b 2d
12	1 Agreed with DMP Recs. 2, 4 and 6.		No	2a
13	1 Disagreed with DMP Recs. 1, 3 and 5		No	2b
14	1 Agreed with DMP Rec. 6 in this Section.		No	2a
15	2 Opposed the notion of allowing the Shire of Albany access to road making materials. The following reasons were given in the submissions: <ul style="list-style-type: none"> • WCHNP is a small area and any reduction in area would be to its detriment • the area being considered for extraction is highly visible from both Lower Denmark Road and Lowlands Beach Road • such an area would be difficult to manage • the proposed area would have to be excised from the Park under Government policy • gravel supplies are available outside the Park. • under Government policy, the Shire is not entitled to access for road making materials • strong local opposition has been expressed previously on this issue 	See Comment 3, this Section.	No	2d
	41. Mineral and Petroleum Resource Development			
1	1 Supported the balanced approach taken in this Section.		No	2a
2	7 Agreed with the recommendations in this Section.		No	2a
3	4 Sought a ban on mining in the Park.	Government Policy determines the issue of mining in National Parks and Nature Reserves as indicated in this Section.	No	2c
4	2 Argued that there should be no mining in WCHNP. The following reasons were given in the submissions: <ul style="list-style-type: none"> • national parks represent only a minute portion of the State's land area • mining would contribute to the spread of dieback disease as no hygiene measures are fool proof • revegetation after extraction never recreates a comparable ecosystem, at best minimising the visual impact • it is in complete contradiction to the DMP's conservation goals. 	See Comment 3, this Section.	No	2c
5	1 Agreed with the objective in this Section in the light of current Government policy.		No	2a

No	Number of Submissions and Summary of Comment on Draft Management Plan (DMP)	Discussion / Action Taken in Final Management Plan (FMP)	Amend?	Crit.
6	1 Stated that there should be no mining or exploration in any national parks or nature reserves.	See Comment 3, this Section.	No	2c
	42. Other Commercial Resource Utilisation			
1	6 Agreed with the recommendations in this Section.		No	2a
2	1 Expressed the view that the Park is too small to allow such activity.	This concern is covered by FMP Action 2 in this Section.	No	2d
	43. Group Training			
1	6 Agreed with the recommendations in this Section.		No	2a
2	1 Found that the Plan provides a good balance between group training, public use and conservation requirements.		No	2a
3	1 Believed the Park should be closed to military training due to its impacts.	The Actions in this Section are designed to ensure that any impacts are kept within acceptable limits.	No	2d
	44. Research and Monitoring			
1	7 Agreed with the recommendations in this Section.		No	2a
2	1 Agreed with the General Recommendations in this Section.		No	2a
3	1 Offered the assistance of climbers in the monitoring of management practices.	This offer is welcomed.	No	2b
4	1 Expressed the view that there needs to be ongoing research particularly on fire, vehicle impact, rehabilitation, weeds, dieback disease, marine fauna and the impact of walkers.	These needs are recognised in the Actions in this Section.	No	2d
5	1 Expected the Final Plan to more clearly delineate management objectives and areas of responsibility.	Management objectives are stated in the relevant Sections of this Plan. Responsibilities will be allocated in the detailed implementation program to be developed for the Plan.	No No	2d 2c
6	1 Agreed with DMP Rec. 3 in this Section and suggested the involvement of educational institutions in this field as well.	Educational institutions will be involved where appropriate.	No	2a

No	Number of Submissions and Summary of Comment on Draft Management Plan (DMP)	Discussion / Action Taken in Final Management Plan (FMP)	Amend?	Crit.
	Implementation (General)			
1	1 Suggested that implementation of management plans could be "fast tracked" as for resource development projects.	All Actions in this Plan are subject to the allocation of priorities as resources permit as indicated in <i>Management Priorities</i> .	No	2d
	45. Management Priorities			
1	7 Agreed with the recommendations in this Section.		No	2a
2	1 Pointed out that there are 456 recommendations in this Plan but no priorities are given. The submission suggested recommendations be prioritised into groups from simple and cheap to implement through to difficult and costly.	Priorities will be allocated to all Actions in the Plan and implementation will take place as resources permit as indicated in this Section.	No	2d
	46. Staffing			
1	1 Sought a change in DMP Rec. 1 to read "Initiate the immediate appointment..."	Staffing levels are set by Government and Departmental Policies. The Region recognises the appointment of a permanent ranger to be a high priority as indicated in this Section.	No	2c
2	2 Expressed the opinion that a resident ranger is not required at this point in time.	This is a view not shared on submissions throughout this document. A ranger is seen as essential to enable effective management of the Park and to co-ordinate implementation of this Plan.	No	2e
3	1 Argued that further development of access and recreational and camping facilities should be preceded by the appointment of a full-time resident ranger.	Appointment of a permanent ranger is a high priority as indicated in this Section. See also Comment 1, this Section.	No No	2d 2c
4	1 Sought the appointment of a full-time resident ranger as a priority.	See Comment 3, this Section.	No	2d 2c
5	2 Maintained that the location of ranger facilities should be determined in the Plan.	The nature and locations of ranger facilities will be determined according to the Actions in this Plan.	No	2c
6	1 Agreed with the recommendations in this Section but felt that the Plan does not seem to emphasise this aspect sufficiently.		No	2a
7	3 Agreed with the recommendations in this Section.		No	2a

No	Number of Submissions and Summary of Comment on Draft Management Plan (DMP)	Discussion / Action Taken in Final Management Plan (FMP)	Am-end?	Cr-it.
8	4 Supported DMP Rec. 1 in this Section.		No	2a
9	1 Believed a full time ranger to be essential to stop visitors making random 4WD tracks in the bush.	See Comment 3, this Section.	No	2d 2c
10	1 Felt a permanent ranger to be essential for control of irresponsible 4WD use, fire prevention and litter control.	See Comment 3, this Section.	No	2d 2c
11	1 Argued that appointment of a full time ranger should be the number 1 priority of the DMP.	See Comment 3, this Section.	No	2d 2c
12	1 Agreed with the objective in this Section.		No	2a
13	1 Maintained that a number of key recommendations in the DMP will not be successfully implemented and overseen without the immediate deployment of a full time ranger.	See Comment 3, this Section.	No	2d 2c
14	1 Indicated there is an immediate need for a permanent ranger based in WCHNP.	See Comment 3, this Section.	No	2d 2c
15	1 Stressed the need for a permanent ranger presence based in or near the Park and with sufficient resources to adequately manage it.	See Comment 3, this Section. Adequate resources will be sought as indicated in <i>Funding</i> .	No	2d 2c
16	1 Expressed the view that although Shelley Beach is a small site, it is only infrequently congested and suggested the allocation of additional rangers at those times to manage visitors' activities.	The allocation of rangers is outside the scope of this Plan.	No	2c
	47. Funding			
1	1 Anticipated that the introduction of entry fees would severely impact a number of local bushwalkers and requested the consideration of alternative options for frequent Park users.	The Departmental proposes to make an annual pass available for frequent users.	No	2c
2	7 Agreed with the recommendations in this Section.		No	2a
3	1 Expressed the view that the DMP does not sufficiently cover possibilities for revenue earning in the Park.	Other revenue earning possibilities are covered in FMP Action 3.	No	2d
4	2 Agreed with DMP Recs. 1, 2, 4 and 5 in this Section.		No	2a
5	2 Opposed DMP Rec. 3 on the grounds that there would be insufficient revenue raised.	Whatever revenue is raised can be used to improve and maintain Park facilities and services as indicated in this Section.	No	2d

No	Number of Submissions and Summary of Comment on Draft Management Plan (DMP)	Discussion / Action Taken in Final Management Plan (FMP)	Amend?	Crit.
6	1 Expressed the view that volunteers would be harder to obtain if fees were introduced.		No	2c
7	1 Agreed with DMP Recs. 1 and 2 in this Section.		No	2a
8	1 Maintained that funds collected in implementing DMP Rec. 3 should be used to assist in the improvement and maintenance of Park facilities and services.	This is the intention as indicated in the FMP Action.	No	2d
9	3 Maintained that more funds would be required to accomplish the objectives outlined in the DMP.	This fact is recognised in this Section.	No	2d
10	1 Suggested a fee be introduced for use of the Bruce Tarbotton Memorial Trail from the Shelley Beach lookout, to offset maintenance costs.	Maintenance of this path will be assisted by revenue from entry fees.	No	2d
11	1 Disagreed with DMP Rec. 3 in this Section until facilities in the Park are improved.	Fee collection will enable the improvement of facilities as indicated in the FMP Action.	No	2d
12	1 Maintained that as Hortins Road was built by commercial fishers and is maintained with Main Roads Department money, there is no justification for charging users for its upkeep.	Fees raised will be used for maintenance of all roads, tracks and facilities in the Park.	No	2d
13	1 Argued that the commercial fishers should not have to pay camping fees as it was fishers who opened up the area and it is a traditional occupation.	Camping fees are used to offset the cost of facility maintenance. All users are asked to contribute as dictated by the principle of equity.	No	2f
14	1 Agreed with DMP Rec. 3 seeking contributions to maintenance costs from all user groups.		No	2a
15	1 Agreed with the objectives in this Section.		No	2a
16	1 Believed that due to the sensitive nature of WCHNP, it is important that the Plan be implemented as soon as possible with necessary funding.	All Actions in this Plan are subject to the allocation of priorities as resources permit as indicated in <i>Management Priorities</i> .	No	2d
17	1 Emphasised that adequate funding is required to staff, manage and monitor the Park.	Adequate funding will be sought as indicated in this Section.	No	2d
18	1 Sought an amendment to this Section to make it clear that such funds would not totally offset management costs.	The background information and FMP Action 3 have been amended to clarify this point.	Yes	1e
	48. Term of this Plan			
1	2 Agreed with the statements in this Section.		No	2a

No	Number of Submissions and Summary of Comment on Draft Management Plan (DMP)	Discussion / Action Taken in Final Management Plan (FMP)	Am-end?	Cr-it.
	49. Evaluation			
1	2 Agreed with the statements in this Section.		No	2a
	50. Updating			
1	2 Agreed with the statements in this Section.		No	2a
2	1 Pointed out that Bornholm Beach is a popular recreational fishing area and maintained that 4WD access onto and along the beach is essential.	4WD access to Bornholm Beach is proposed in this Plan. The review will involve consultation with user groups. This has been clarified in the text.	Yes	1e

APPENDIX 1

ALPHABETICAL LIST OF SUBMITTORS

Albany Angling Club
Albany Bushwalkers
Albany District - CALM
Albany Equestrian Centre
Albany Model Aero Club
Batini, Frank - CALM
Bornholm Riding Club
Bush Fires Board
Climbing Association of Western Australia
Commercial Fishermen (Shelley Beach)
Conservation Council
Cooper, Margaret
Cuthbert, Lawrence
Davidson, Doreen
Defence Centre - Perth
Denmark Riding and Pony Club
Department of Minerals and Energy
Department of Planning and Urban Development
Devine, Mavis and colleagues
Emery, Sonia
Fisheries Department
Grant, Malcom - CALM
Great Southern Development Authority
Hamilton, R A
Hang Gliding Association of WA
Harrison, Tony
Hart, Chris - CALM
Hart, Mary
King River Horse and Pony Club
Leach, Peter
Madden, Barbara
Main, Bert and Barbara
Miscellaneous Workers Division, LHMU
Mountaineering Association of the South Coast
Nash, Ms M

Palm, J
Parr, Lewis
Passmore, Terry - CALM
Payne, Joan
Pemberton, R W and J A
Perth Bushwalkers
Pony Club Association of WA. Great Southern Zone
Rokich, Alan
Sharples, Russ
Shiner, Fred
Shire of Albany
South Coast Licensed Fishermen's Association
South Coast Region - CALM
South Coast Weekenders Angling Club
Southern Aboriginal Corporation
Swainson, Betty
Tullett, Margaret
Udinga, Paul - CALM
Valleau, Danuta
Wajon, Dr J E
Warnock, Lloyd
Watson, Giz
Watson, Professor and Mrs David
West Cape Howe National Park Association
Western Australian Fishing Industry Council
Western Australian Maritime Museum
Western Australian Museum
Western Australian Recreation and Sportfishing Council
Western Australian Tourism Commission
White, Gillian
Wilderness Society