

ANALYSIS OF PUBLIC SUBMISSIONS

Rowles Lagoon Draft Management Plan

INTRODUCTION

This document is an analysis of public submissions to the draft management plan for Rowles Lagoon, which comprises Rowles Lagoon Conservation Park and Clear and Muddy Lakes Nature Reserve in the Goldfields of Western Australia.

The Rowles Lagoon draft management plan was released for public comment on 22 October 1999 for a period of just over two months to 7 January 2000. A total of 12 public submissions was received. All submissions have been summarised and changes have been made to the management plan where appropriate. Comments have been detailed to the section of the draft management plan to which they refer.

Following the release of the draft management plan, advertisements were placed in local and Statewide newspapers advising that the draft management plan was available for comment. The draft management plan was distributed to State Government departments, tertiary institutions, recreation and conservation groups, local authorities, libraries and numerous individuals who expressed interest during the preparation of the draft. Copies of the draft management plan were available for perusal at CALM and local government offices. The plan was also available for purchase from local CALM offices.

ANALYSIS OF PUBLIC SUBMISSIONS

Method of Analysis

The public submissions to the Rowles Lagoon draft management plan were analysed according to the process depicted in Figure 1. More specifically:

- All comments were collated according to the section of the draft management plan they addressed.
- Each comment was assessed using the following criteria:
 1. The draft management plan *was* amended if the submission:
 - (a) provided additional resource information of direct relevance to management;
 - (b) provided additional information on affected user groups of direct relevance to management;
 - (c) indicated a change in (or clarified) Government legislation, management commitment or management policy;
 - (d) proposed strategies that would better achieve management goals and objectives; or
 - (e) indicated omissions, inaccuracies or a lack of clarity.
 2. The draft management plan was *not* amended if:
 - (a) there was clear support for the draft proposals;

- (b) a neutral statement was offered or no change was sought;
 - (c) the submission addressed issues beyond the scope of the plan;
 - (d) the submission made points which were already in the plan, or had been considered during plan preparation;
 - (e) existing strategies and recommendations appear to be the most practical, where submissions are in conflict with others or where resources are limited;
 - (f) the submission contributed options which were not feasible (generally due to conflict with existing legislation, or Government or departmental policy).
- The draft management plan was reviewed and amended where necessary. Minor editorial changes referred to in the submissions were also made.

Comments made in submissions have been assessed entirely on the cogency of points raised. No subjective weighting has been given to any submission for reasons of its origin or any other factor which would give cause to elevate the importance of any submission above another.

Number and Origin of Submissions

The number and origin of submissions are listed below:

	Number	Percentage
Individuals	10	83.4
Community Groups	1	8.3
Local Government	1	8.3
TOTAL	12	100.0

A list of the submitters to the Rowles Lagoon draft management plan is given at the back of this document.

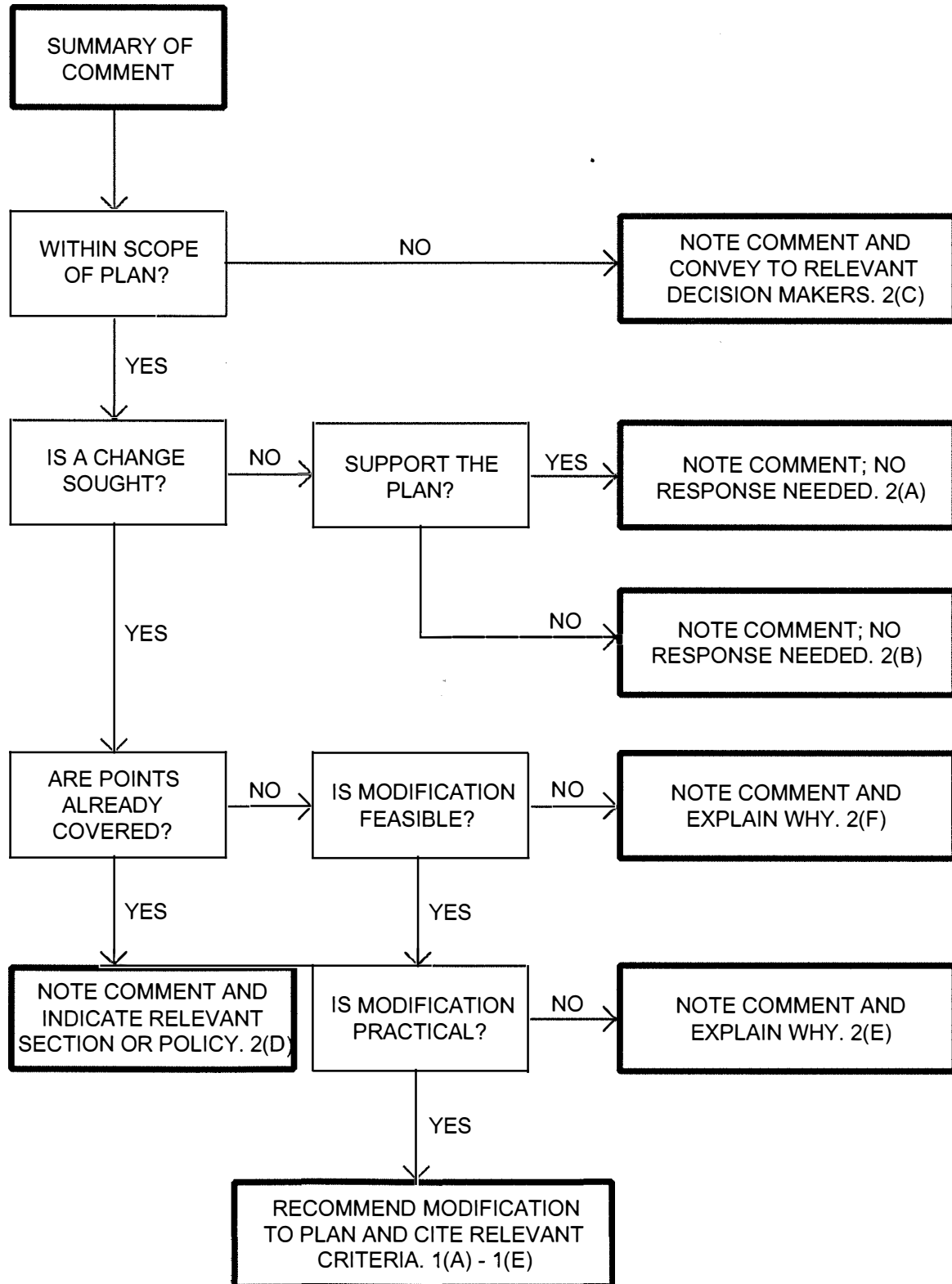
ANALYSIS TABLE

The analysis table contains:

- The number of different comments made about each section of the draft management plan;
- A summary of each comment made on the draft management plan;
- The number of submissions making each comment (in brackets in cases where the same comment was made in more than one submission);
- An indication of what action was taken in reviewing the draft management plan, or a discussion of why the comment did not result in an amendment to the draft management plan;
- An indication whether or not the comment resulted in an amendment to the draft management plan; and
- The criteria by which each comment was assessed.

Figure 1.

ANALYSIS PROCESS



SUBMISSION COMMENTS (Number of Submissions)	DISCUSSION/ACTION TAKEN	PLAN AMENDED
General Comments 1 submission.		
1. Expressed general support for recommendations in the plan. (1)	Support for draft management plan.	No 2(a)
INTRODUCTION 1 submission.		
1. Has the Ramsar status of Rowles been assessed, if so what is it? (1)	No. Ramsar status has not been assessed.	No 2(d)
LAND USE MANAGEMENT 1 submission.		
1. Support for inclusion of Canegrass Lagoon into the Reserve. (1)	Support for draft management plan.	No 2(a)
MANAGEMENT FOR CONSERVATION 1 submission.		
1. Support for control of feral animals and weeds. (1)	Support for draft management plan.	No 2(a)
2. Expressed concern over wildfires and need for management access. (1)	Comment noted.	No 2(d)
3. Expressed concern over mining impacts particularly water extraction. (1)	Comment noted.	No 2(d)
MANAGEMENT FOR RECREATION AND TOURISM 11 submissions.		
1. Opposed to proposal to prohibit water skiing. (9)	The final plan has been amended to accommodate water-skiing subject to regulation by Department of Transport and CALM.	Yes 1(b)
2. Support the proposal to prohibit water skiing. (2)	See comment above.	Yes 1(b)
3. Recognition that greater safety measures are required for water skiing. (3)	See comment above.	Yes 1(b)
4. Draws attention to fact that DOT have presence in Kalgoorlie/Boulder. (2)	See comment above.	Yes 1(b)
5. Supports prohibition of jet skis only. (1)	CALM will negotiate with DOT on this point.	Yes 1(b)
COMMUNITY RELATIONS 8 submissions.		
1. Expressed wish to be involved in management of water activities. (5)	The final plan has been amended to accommodate user involvement in water activities management.	Yes 1(b)
2. Support for interpretation plan with Aboriginal theme. (1)	Aboriginal themes will be included in interpretation planning.	Yes 1(b)
3. Supports Management Committee. (2)	CALM is already committed to this.	No 2(d)
4. Management Committee should be broadly based and take catchment approach. (1)	See comment above.	No 2(d)
5. Supports 'Friends' Group. (1)	See comment above.	No 2(d)
6. Expressed interest in volunteer activities. (1)	See comment above.	No 2(d)

Submitters to the Draft Management Plan

Individuals

Birney, M.
Chapman, A.
Clarke, P.
Craig, P. and Boase, C.
Daws, D.
Grill, J. (MLA)
Mitchell, R.
Phelan, K.
Sambo, D. & E.
Smith, G. (MLC)

Community Groups

Goldfields Naturalists' Club

Local Government

Shire of Coolgardie