

Fire and Fauna in Purnululu (Bungle Bungle) National Park

Thalie Partridge, Macquarie University

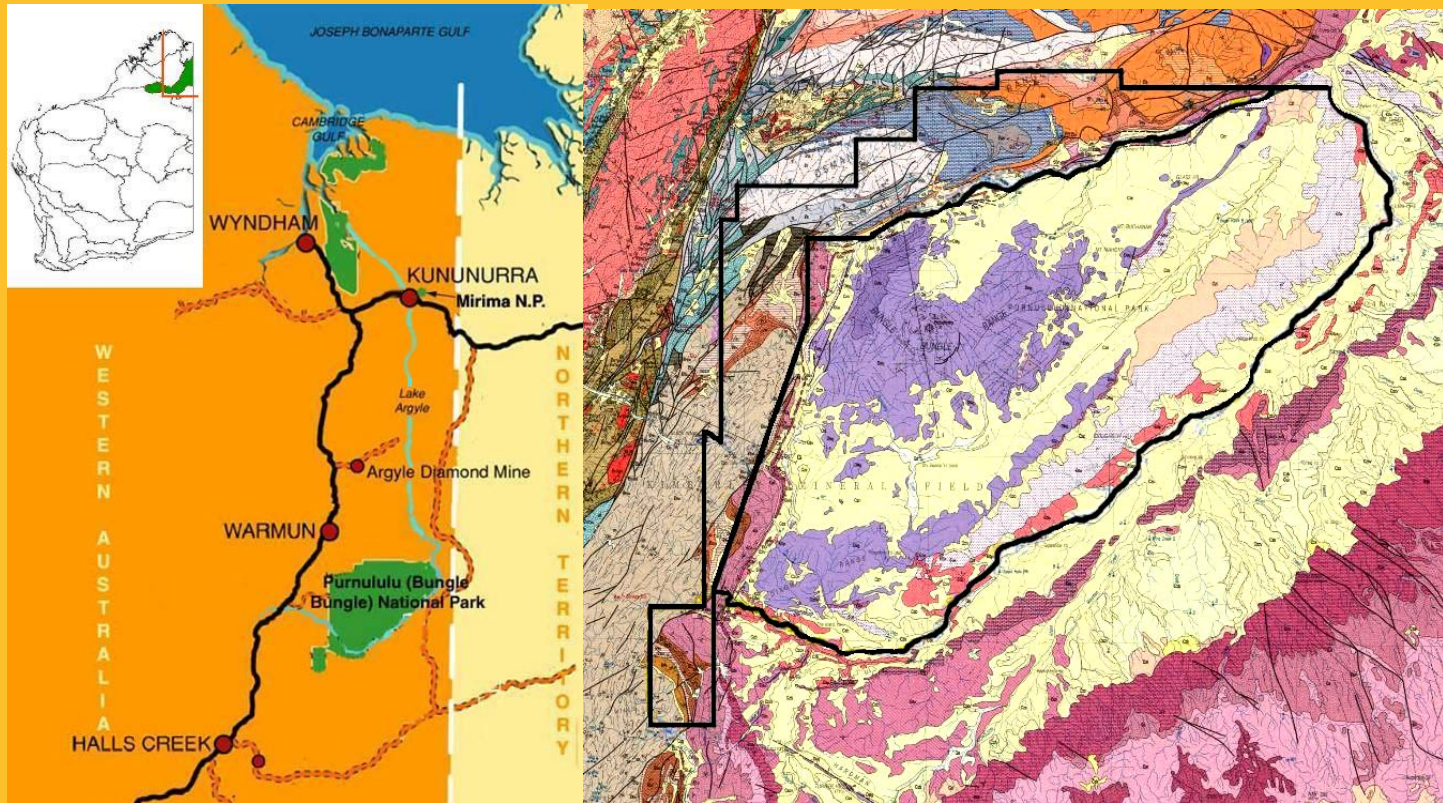


The effect of fire?
– THEY GET BURNT



Purnululu (Bungle Bungle) National Park and Conservation Reserve

- Ord-Victoria Plains Bioregion
- 500-700mm
- 300 000 ha
- Unique geology

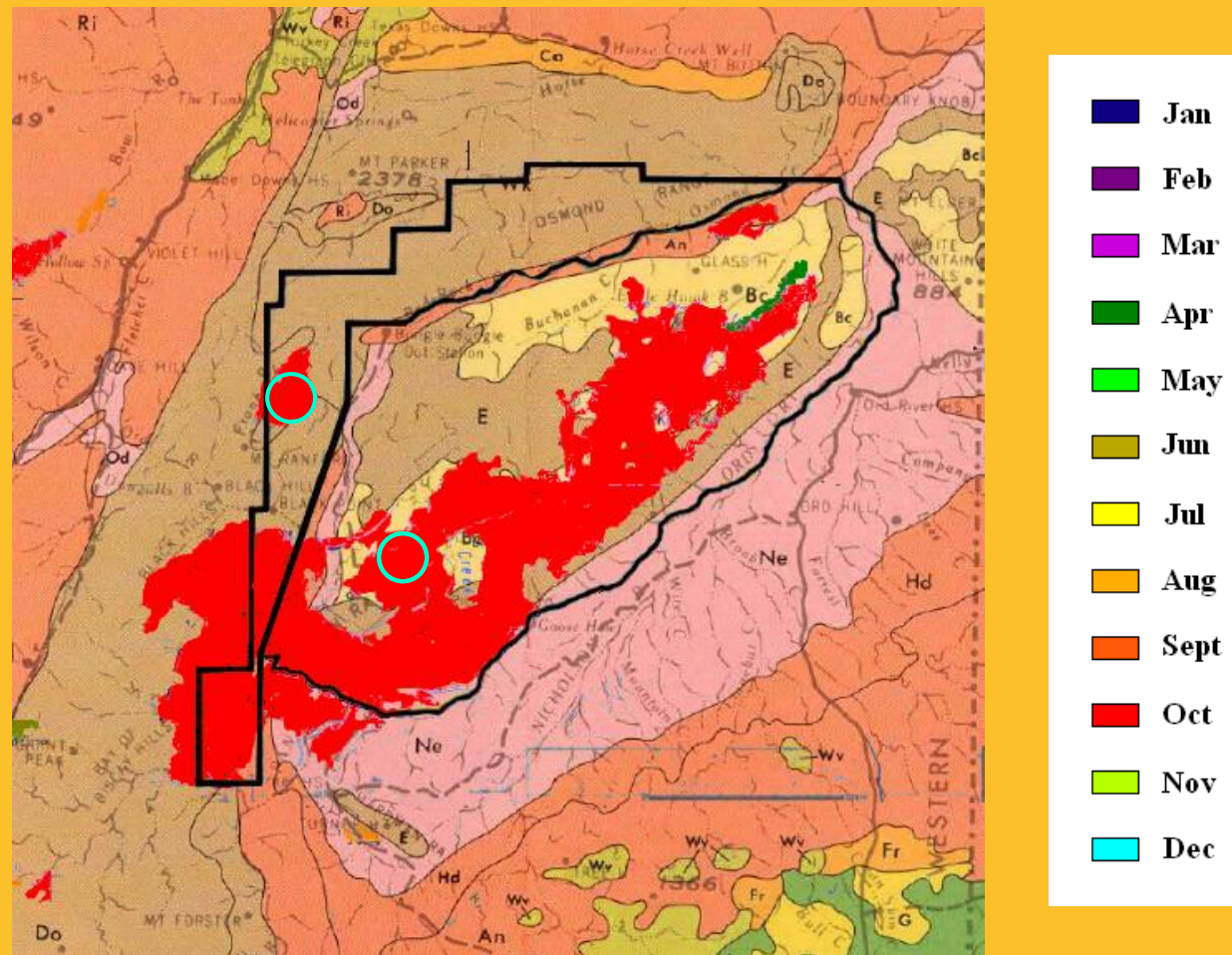


Management

- Traditional
- Pastoral
- Conservation/
Tourism



FIRES in the park



From Department of Lands Information, WA and the North Australian Fire Information Website

Effect of fire on fauna?

- Are habitat preferences of terrestrial vertebrates related to the habitat structure determined by a fire event?
- Is the availability and type of ground cover important?
- What are the habitat requirements of two rodents, *Pseudomys desertor*, *P. nanus*?

Field methods

– Site selection

- Two habitats: Wickham Uplands, Buchanan Sandplain
- Two fire types: Recently Burnt, > 4 yrs since Fire (unburnt)
- 4 sites within each fire type, transect 150m



Field Methods

- general habitat: percentage ground cover
- habitat utilised by fauna: trap locations

location of radio-tracked rodents



Field Methods

– Trapping

- eliott/pitfall/cage
- 6 trap nights
- end of wet and dry

– Radio tracking

- two species
- day/night/sunset/
sunrise locations

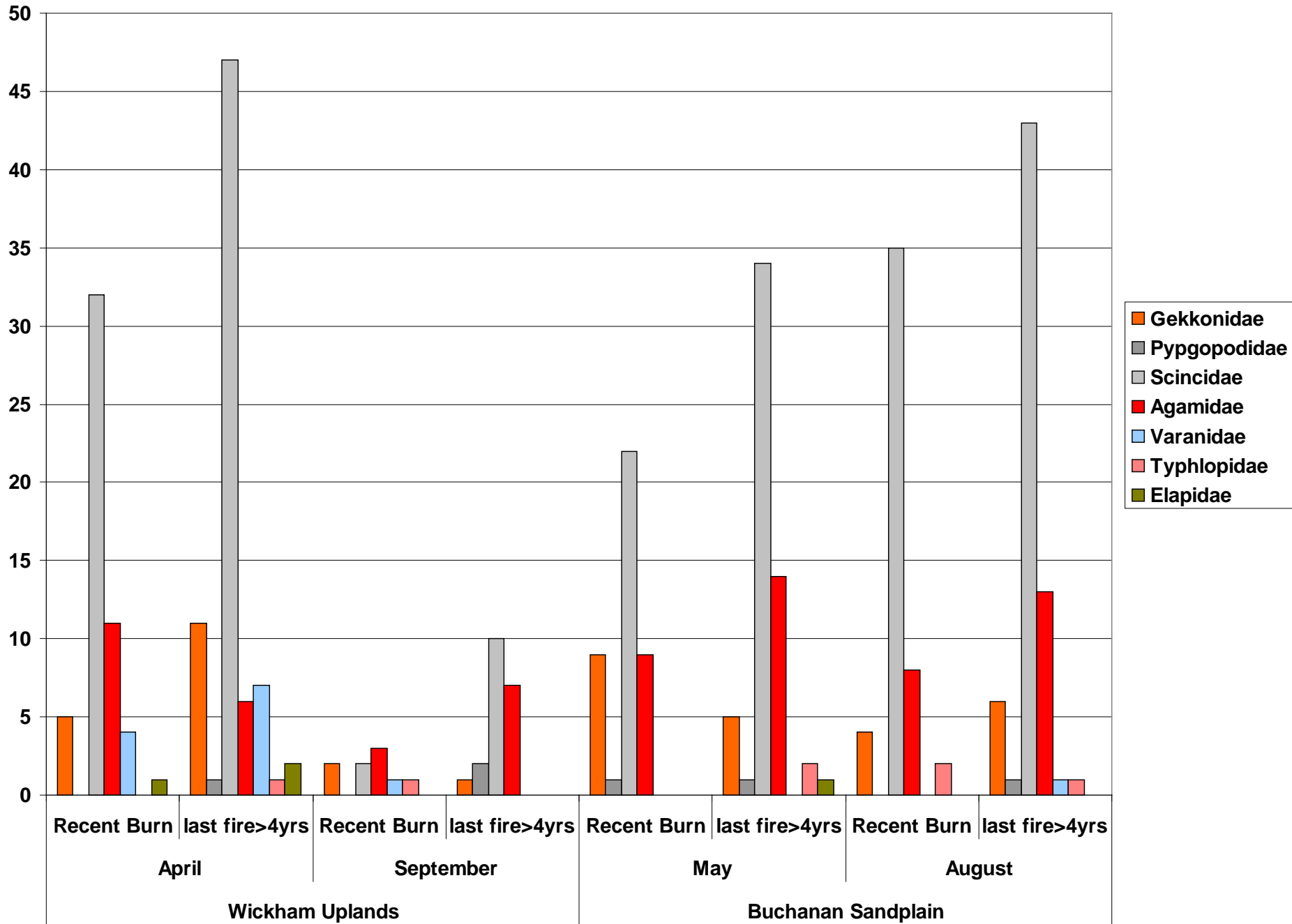


Preliminary Results

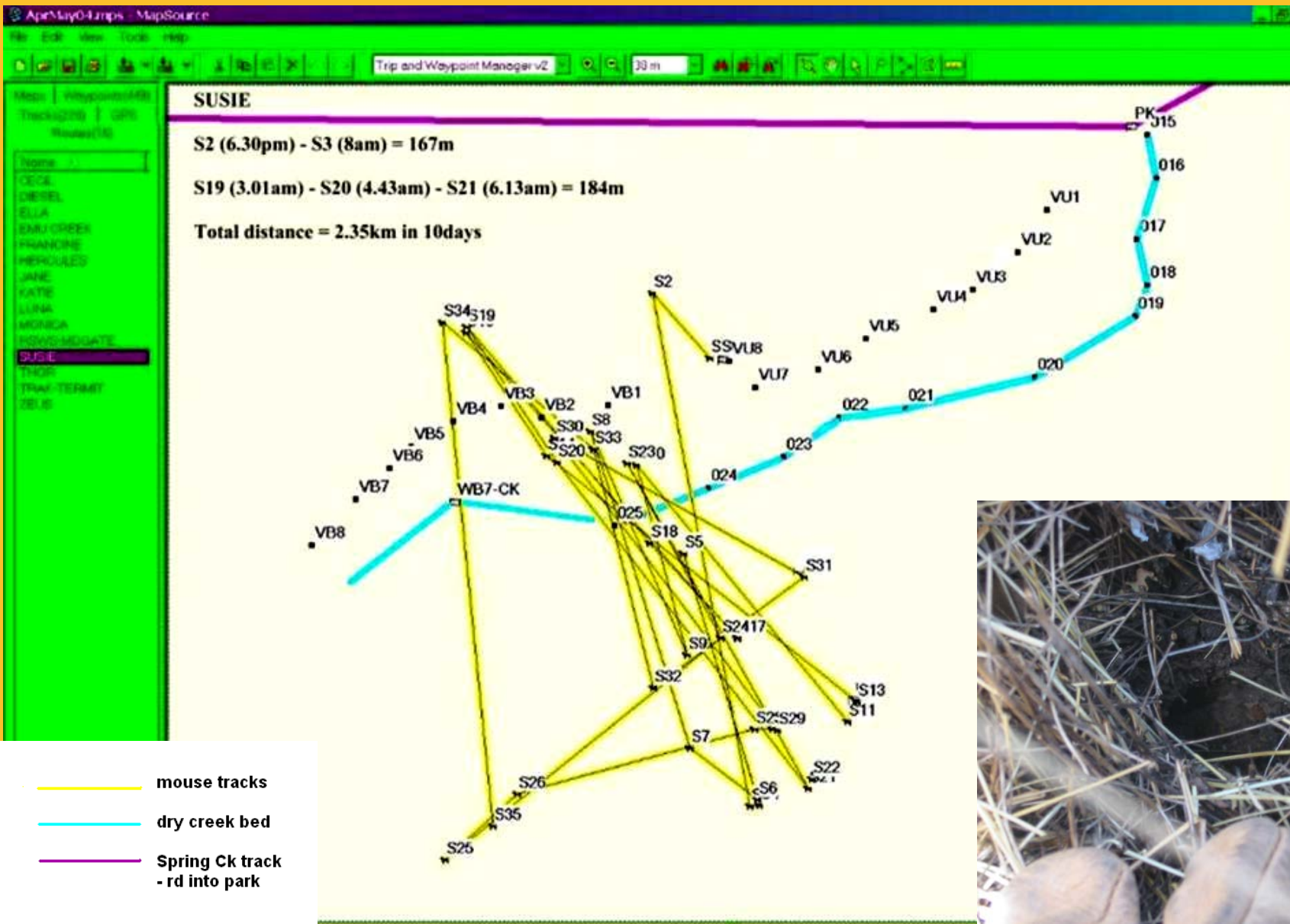
– 5 New Species Records

- > 42 Reptile species
- > 7 Mammal species
- 1 Feral Cat





Radio-tracking



Diet



Conclusions

- Key Results
- Fire Management Plan
- Education
- Resources
- Monitoring



Acknowledgements

- Jim Kohen and Tony Start
- Macquarie University
- CALM - Lindsay Brown, Allan Thompson
- Jaru, Kija people of Purnululu.
- Australian Geographic
- Volunteers

