

Perth  
Urban  
Bushland  
Fungi

# Fungi of Wongan Hills and Rica Erickson Nature Reserve

*Written and produced by*

**Neale L. Bougher, Roz Hart,  
Sarah de Bueger & Brett Glossop**

*Department of Environment and Conservation – Perth Urban Bushland Fungi Project*



*Foray group at Mt O'Brien, Wongan Hills*



*Back at the Caravan Park, examining fungi*



*Gathercole Nature Reserve fungi survey*



*Wandoo bushland at Rica Erickson Nature Reserve*

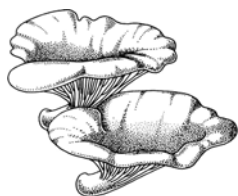
**PUBF Website : [www.fungiperth.org.au](http://www.fungiperth.org.au)**



Department of  
Environment and Conservation







Perth  
Urban  
Bushland  
Fungi

# Fungi of Wongan Hills and Rica Erickson Nature Reserve

*Written and produced by*  
**Neale L. Bougher, Roz Hart,  
Sarah de Bueger & Brett Glossop**

*Department of Environment and Conservation (DEC) – Perth Urban Bushland Fungi Project*

Advice about the identity of the fungi was provided by Dr Neale Bougher, Mycologist. Organisational and technical support was provided by officers on the PUBF project - Roz Hart, Sarah de Bueger, and Brett Glossop.

Photos and field assistance by PUBF participants

© November 2008

**This report may be quoted as:** Bougher, N.L., Hart, R., De Bueger, S., and Glossop, B. (2008). Fungi of Wongan Hills and Rica Erickson Nature Reserve. Perth Urban Bushland Fungi Project.

---

**PUBF Website : [www.fungiperth.org.au](http://www.fungiperth.org.au)**

This report presents data resulting from a Perth Urban Bushland Fungi (PUBF) Project event held jointly with the WA Naturalists' Club, on the long weekend of 31 May to 2 June 2008 at Wongan Hills, about 190 km north-east of Perth in the Western Australian wheatbelt. A brief survey was also undertaken for the first time at Rica Erickson Nature Reserve, located about 60 km south-west of Wongan Hills. This report incorporates records of fungi from the Wongan Hills area prior to 2008. A total of twenty-eight people participated in the weekend event. Thirteen people collected fungi with PUBF in the Wongan Hills area on 31 May 2008. Unfortunately it was very dry and although rain had fallen close by, the Wongan Hills themselves and the surrounding farms were very dry. Next day, 1 June, at the recommendation of local people, the group visited the Gathercole Nature Reserve to the east of the town where it had rained more recently. Twenty one people assisted PUBF in this fungi survey. With the assistance of the PUBF Fungi Leaders, the fungi collected were sorted and some were vouchered for permanent lodgement at the Western Australian Herbarium. Mycologist Neale Bougher identified the fungi and talked about their features and their roles in helping to keep bushlands healthy. On 2 June, twelve people stopped at the Rica Erickson Nature Reserve, encouraged by recent reports of substantial rainfall at the reserve and opportunistically recorded the fungi seen there.



## **The Wongan Hills, and Rica Erickson Nature Reserve**

The Wongan Hills constitute one of the largest and most valuable areas of remnant natural vegetation in the Western Australian wheatbelt. The flat-topped hills are close to the town of Wongan Hills, about 190 km north-east of Perth in the northern wheatbelt of Western Australia (see Maps 1 and 2). The hills have escaped most of the extensive clearing for broad-acre cropping and grazing that has swept across the now salinity-plagued surrounding plains. The hills, lateritic breakaways, and gullies of the Wongan Hills support a diverse variety of native plants, animals and fungi (Kenneally, 1977). There are a number of small isolated remnant patches of natural vegetation on the plains surrounding the Wongan Hills. Gathercole Nature Reserve is one such reserve situated about 6 km to the east of the Wongan Hills township and is dominated by exposed granite outcrops and associated areas of fringing vegetation (Map 2). The areas which were surveyed are shown in Aerial Photos 1 and 2.

The Rica Erickson Nature Reserve is located about 60 km south-west of Wongan Hills, and about 15 kilometres west of Calingiri (see Map 3). The reserve was named in honour of Rica Erickson in 1996, and covers 124 hectares of various types of natural vegetation, including wandoo woodland. The area which was surveyed is shown in Aerial Photo 3.

This survey in 2008 is the second survey of fungi at Wongan Hills. The first survey was undertaken by the Western Australian Naturalists' Club in 1974-1975 at three sites in the Wongan Hills. Fungi had not been surveyed at Rica Erickson Nature Reserve prior to 2008.

## **Fungi of Wongan Hills and Rica Erickson Nature Reserve**

During the two surveys in the Wongan Hills area (Mount O'Brien and Gathercole Nature Reserve) a total of 17 records representing 11 different fungi species were recorded, and 8 collections were vouchered into the DEC Western Australian Herbarium (Tables 1 - 4). Two further records of other fungi species were made in other sites near Wongan Hills, bringing the total species to 13 (Table 5):

At Mount O'Brien in the Wongan Hills, 9 records representing 6 fungi species were obtained, whereas 8 records representing 8 fungi species were obtained at Gathercole Reserve. *Phellinus* sp., *Phaeotrametes decipiens*, *Pycnoporus coccineus* and *Tulostoma* sp. were recorded at both locations.

The inaugural survey at Rica Erickson Reserve yielded a total of 19 records, representing 18 different fungi species (Table 6). This survey was done opportunistically, so there was unfortunately no opportunity to voucher specimens.

The records from the surveys in 2008 include genera of decomposer fungi such as *Clitocybe*, *Phaeotrametes*, and *Trichaptum*, and beneficial mycorrhizal fungi belonging to genera such as *Amanita*, *Inocybe*, and *Laccaria*. Some of the fungi recorded in this survey remain unidentified pending further collections or more detailed comparative analyses. Many of the fungi could only be identified to genus level. This is because detailed taxonomic examinations are yet to be completed, or perhaps some are undescribed species.

Far more fungi are likely to occur at Wongan Hills and Rica Erickson Nature Reserve than the 31 species recorded in this survey. Prior to the current report, the Western Australian Herbarium had a total of 28 collections of fungi from the Wongan Hills area (see Table 7), 13 of which are microfungi, and 15 macrofungi (representing 12 species). These include two species of native truffle fungi (fungi that produce fruit bodies below the ground) in the genus *Reddellomyces*, and one introduced truffle – *Rhizopogon roseolus* which is associated with pines. A Western Australian Naturalists' Club regional survey undertaken in 1974 and 1975 reported fungi from three sites in the Wongan Hills – Monks Well (31 records), Drummonds Gully (11) and Mount Rupert (15) (Kenneally 1977). Some of the fungi from this survey were likely to have been found at more than

one of the three sites, and it is estimated that the records represent about 41 different fungi species (Table 8). One of the species is an introduced fungus – *Suillus* sp. associated with pines. Significantly, the 1974-1975 list includes many fleshy fungi that were not observed during the 2008 surveys, such as *Boletus*, *Melanoleuca*, *Russula*, and *Ramaria*. Only 2 of the fungi from the 1974-1975 survey can be confidently matched to the collections from 2008 – *Panus fasciatus* and *Pycnoporus coccineus*. About 7 other fungi may also have been found in both surveys but this is not possible to verify because few of the fungi recorded from the 1974-1975 survey appear to have been vouchered in a herbarium. Only 2 vouchers of macrofungi in the WA Herbarium correspond (fungus name, date, and location) to the 1974-1975 survey - both are vouchered as *Geastrum* sp. One other macrofungus voucher in the WA Herbarium corresponds to the 1974-1975 survey. However it is labelled *Calvatia candida*, and that name is not listed in Kenneally (1977). It may possibly match the listed “*Bovista*”.

The 2008 survey yielded less fungi than expected due to prevailing dry weather conditions at the time. All of the fungi that were observed during the survey at Mount O’Brien in the Wongan Hills have tough, persistent fruit bodies, and none were fleshy types. This indicates how dry conditions were at the time of survey. Fleshy fungi respond to rainfall and rapidly emerge. Their fruit bodies usually do not persist for long after rainfall. At Gathercole Nature Reserve, where there had been recent rainfall, some fleshy fungi were observed. The fleshy fungi were almost exclusively in the moist areas that receive water run-off from granite outcrops. This highlights the significance of retaining granite outcrops and associated vegetation in the Western Australian wheatbelt for encouraging the survival of many native fungi species. The mean annual rainfall for Wongan Hills town is 390 mm with a winter pattern, but the prospect of reduced rainfall and long periods of drought in the wheatbelt brought about by climate change emphasises the value of granite outcrops as refuges for native fungi.

Management and general interest in biodiversity of the Western Australian wheatbelt (as with other parts of Western Australia) in the past has primarily focussed on flora and fauna conservation, and this will probably continue to be the case. However, Flora, Fauna and Fungi need to be considered together for future management of wheatbelt ecosystems (see Fungibank at [www.fungibank.csiro.au](http://www.fungibank.csiro.au)). Fungi have crucial ecological roles for maintaining bushland health, including linkages between the 3 F’s. An increased level of knowledge about the fungi present in the Wongan Hills and surrounding areas and at Rica Erickson Reserve, is required as a basis for documenting and understanding the occurrence and role of the fungi present, in order to assist in the future management of the bushland’s Flora and Fauna.

## **References**

- Bougher, N.L (2007) Perth Urban Bushland Fungi Field Book. Perth Urban Bushland Fungi , Perth, Western Australia (self managed format linked to [www.fungiperth.org.au](http://www.fungiperth.org.au)).
- Kenneally, K.F. (1977). The Flora. *In* The Natural History of the Wongan Hills. Western Australian Naturalists’ Club, Perth

**Table 1: Wongan Hills: Mount O'Brien Bushland Fungi List: 31 May**

**Life Mode Key:** M = Mycorrhizal, S = Saprotrophic (Decomposer), S/P = Saprotrophic and Parasitic. Life Mode allocation is based on probability only, as many fungi have not been tested.

**Field Book Page #** refers to the Perth Urban Bushland Fungi Field Book which is available for downloading from the project website at [www.fungiperth.org.au](http://www.fungiperth.org.au)

**Fungimap Target:** refers to species that have been selected by the Australia-wide mapping project, Fungimap, for collecting detailed records to be compiled into distribution maps. See Fungimap on-line at [www.rbg.vic.gov.au/fungimap](http://www.rbg.vic.gov.au/fungimap) and the book *Fungi Down Under* by Grey, P. and Grey, E (2005).

Scientific Name	Common Name	Form	Habitat	Life Mode	Fungimap Target	Field Book Page #	Specimen ID
<i>Geastrum</i> sp.		earthstar	litter/ground	S			3551 3554 3556
<i>Phaeotrametes decipiens</i>	<b>Lavender-pored Bracket Fungus</b>	bracket	dead wood	S		N-5	3557
<i>Phellinus</i> sp.		bracket	dead wood	S			3550 3555
<i>Pycnoporus coccineus</i>	<b>Scarlet Bracket Fungus</b>	bracket	dead wood	S		N-8	3553
<i>Trichaptum</i> sp.		bracket	dead wood				3549
<i>Tulostoma</i> sp.		puffball	litter/ground				3552

**Table 2: Permanent Vouchered Specimens (Mount O'Brien Bushland)**

Five of the fungi collected during this event were deposited into the Western Australian Herbarium fungi collection with the following details:

<i>Geastrum</i> sp.	<b>Voucher ID:</b> E9103	<b>Specimen ID:</b> 3554
<i>Geastrum</i> sp.	<b>Voucher ID:</b> E9104	<b>Specimen ID:</b> 3556
<i>Phaeotrametes decipiens</i>	<b>Voucher ID:</b> E9105	<b>Specimen ID:</b> 3557
<i>Trichaptum</i> sp.	<b>Voucher ID:</b> E9101	<b>Specimen ID:</b> 3549
<i>Tulostoma</i> sp.	<b>Voucher ID:</b> E9102	<b>Specimen ID:</b> 3552

**Table 3: Wongan Hills: Gathercole Nature Reserve Fungi List: 1 June 2008**

**Life Mode Key:** M = Mycorrhizal, S = Saprotrophic (Decomposer), S/P = Saprotrophic and Parasitic. Life Mode allocation is based on probability only, as many fungi have not been tested.

**Field Book Page #** refers to the Perth Urban Bushland Fungi Field Book which is available for downloading from the project website at [www.fungiperth.org.au](http://www.fungiperth.org.au)

**Fungimap Target:** refers to species that have been selected by the Australia-wide mapping project, Fungimap, for collecting detailed records to be compiled into distribution maps. See Fungimap on-line at [www.rbgs.vic.gov.au/fungimap](http://www.rbgs.vic.gov.au/fungimap) and the book *Fungi Down Under* by Grey, P. and Grey, E (2005).

Scientific Name	Common Name	Form	Habitat	Life Mode	F map	Page Num	Speci. ID
<i>Phaeotrametes decipiens</i>	Lavender-pored Bracket Fungus	bracket	dead wood	S		N-5	3564
<i>Phellinus</i> sp.		bracket	dead wood	S			3559
<i>Poronia erici</i>	Dung Buttons	button	dung	S	Yes	D-1	3560
<i>Psathyrella</i> sp.		mushroom	litter/ground	S			3563
<i>Puccinia myrsiphilli</i>		rust	bridal creeper	P			3562
<i>Pycnoporus coccineus</i>	Scarlet Bracket Fungus	bracket	dead wood	S		N-8	3558
<i>Tubaria</i> sp.		mushroom	litter/ground	S			3565
Undetermined Agaric		mushroom	litter/ground	?			3561

**Table 4 : Permanent Vouchered Specimens**

Three of the fungi collected during this event were deposited into the Western Australian Herbarium fungi collection with the following details:

<i>Phaeotrametes decipiens</i>	<b>Voucher ID:</b> E9110	<b>Specimen ID:</b> 3564
<i>Psathyrella</i> sp.	<b>Voucher ID:</b> E9109	<b>Specimen ID:</b> 3563
Undetermined Agaric	<b>Voucher ID:</b> E9108	<b>Specimen ID:</b> 3561

**Table 5 : Permanent Vouchered Specimens from other areas of Wongan Hills**

<i>Bovista</i> sp.	<b>Voucher ID:</b> E9106	Elphin Nature Reserve
<i>Panus fasciatus</i>	<b>Voucher ID:</b> E9107	Christmas Rock Track

Note: There are no specimen IDs for these two fungi as they were collected opportunistically.



**Table 6: Rica Erickson Nature Reserve Fungi List: 2 June**

**Life Mode Key:** M = Mycorrhizal, S = Saprotrophic (Decomposer), S/P = Saprotrophic and Parasitic. Life Mode allocation is based on probability only, as many fungi have not been tested.

**Field Book Page #** refers to the Perth Urban Bushland Fungi Field Book which is available for downloading from the project website at [www.fungiperth.org.au](http://www.fungiperth.org.au)

**Fungimap Target:** refers to species that have been selected by the Australia-wide mapping project, Fungimap, for collecting detailed records to be compiled into distribution maps. See Fungimap on-line at [www.rbq.vic.gov.au/fungimap](http://www.rbq.vic.gov.au/fungimap) and the book *Fungi Down Under* by Grey, P. and Grey, E (2005).

Scientific Name	Common Name	Form	Habitat	Life Mode	Fungimap Target	Field Book Page #	Specimen ID
<i>Agaricus</i> sp.		mushroom	litter/ground	S			3566
<i>Amanita</i> sp.		mushroom	litter/ground	M			3576, 3581
<i>Amanita xanthocephala</i>	Yellow Headed Amanita	mushroom	litter/ground	M	Yes		3568
<i>Clitocybe semiocculata</i>	Shy Funnel Cap	shell	dead wood	S		J-4	3580
<i>Crepidotus nephrodes</i>		shell	dead wood	S			3578
<i>Entoloma</i> sp.		mushroom	litter/underground	S			3567
<i>Inocybe arenacolens</i>		mushroom	litter/ground				3575
<i>Laccaria</i> sp.		mushroom	litter/ground	M			3572
<i>Lichenomphalia</i> sp.		mushroom	litter/ground	S			3584
<i>Lycoperdon</i> sp.		puffball	litter/ground	S			3583
<i>Mycena</i> sp. grey		mushroom	litter/ground	S			3569
<i>Mycena</i> sp. cream		mushroom	litter/ground	S			3571
<i>Phellinus</i> sp.		bracket	dead wood	S			3574
<i>Psathyrella</i> sp.		mushroom	litter/ground	S			3573
<i>Psilocybe coprophila</i>		mushroom	dung	S			3570
<i>Tubaria</i> sp.		mushroom	litter/ground	S			3579
<i>Tulostoma</i> sp.		puffball	litter/ground				3582
Undetermined Bolete		mushroom	litter/ground	M		R-3	3577

**Table 7: Wongan Hills: Fungi vouchers held at the Western Australian Herbarium, prior to the current report**

Microfungi are indicated in smaller type.

GENUS	SPECIES	DATE	LOCATION	WA HERBARIUM ACC. No.
<i>Aecidium</i>	<i>sp.</i>	27/01/1995	Wongan Hills, near Lake Ninan	PERTH 3801527
<i>Aecidium</i>	<i>sp.</i>	15/06/1974	Monks Well Gully, Wongan Hills	PERTH 966312
<i>Alternaria</i>	<i>sp.</i>	8/10/1996	300 m along railway to S of Calingiri Road crossing, Wongan Hills	PERTH 4176081
<i>Calostoma</i>	<i>sp.</i>	7/10/1992	2 km N of Wongan Hills	PERTH 1444840
<i>Calostoma</i>	<i>sp.</i>	28/06/1970	Agricultural Research Station, Wongan Hills	PERTH 956724
<i>Calvatia</i>	<i>candida</i>	16/06/1974	Wongan Hills	PERTH 958840
<i>Cladosporium</i>	<i>sp.</i>	25/11/1992	Lake Hinds, near Wongan Hills	PERTH 2340607
<i>Cochliobolus</i>	<i>victoriae</i>	/01/1956	Wongan Hills Research Station	PERTH 808237
<i>Fusarium</i>	<i>acuminatum</i>	/ /1960	Wongan Hills	PERTH 826782
<i>Fusarium</i>	<i>solani</i>	/ /1960	Wongan Hills	PERTH 826790
<i>Geastrum</i>	<i>sp.</i>	13/07/1975	Wongan Hills	PERTH 959456
<i>Geastrum</i>	<i>sp.</i>	5/06/1977	Monks Well Gully, Mt Rupert station, Wongan Hills	PERTH 959367
<i>Geastrum</i>	<i>sp.</i>	14/07/1975	Monks Well, Wongan Hills	PERTH 959928
<i>Hypoxylon</i>	<i>serpens</i>	21/04/1974	Wongan Hills	PERTH 744506
<i>Leptosphaeria</i>	<i>nodorum</i>	/10/1950	Wongan Hills Research Station	PERTH 779202
<i>Lycoperdon</i>	<i>sp.</i>		Conway's property Dunmoor"	PERTH 962511
<i>Phellinus</i>	<i>rimosus</i>		Monks Well Gully, Wongan Hills	PERTH 939935
<i>Podaxis</i>	<i>pistillaris</i>	/05/1971	Wongan Hills, 8 miles W of Burakin	PERTH 956740
<i>Psathyrella</i>	<i>sp.</i>	29/06/1983	Conway's property, on edge of Wongan Hills, approx. 200 km NE of Perth.	PERTH 916161
<i>Puccinia</i>	<i>recondita</i>	4/09/1924	Wongan Hills	PERTH 823597
<i>Puccinia</i>	<i>ursinae</i>	16/06/1974	Monks Well Gully, Wongan Hills	PERTH 965685
<i>Reddellomyces</i>	<i>magnisporus</i>	2/08/1987	Lake Hinds near Wongon Hills	PERTH 7599536
<i>Reddellomyces</i>	<i>westraliensis</i>	15/07/1987	Lake Hinds, near Wongan Hills	PERTH 7599234
<i>Rhizopogon</i>	<i>roseolus</i>	13/08/1980	Wongan Hills	PERTH 959901
<i>Tricholoma</i>	<i>sp.</i>	14/09/1983	Below translator tower in the Wongan Hills, 13.5 km NE of township of Wongan Hills on Piawaning Road	PERTH 915726
<i>Urocystis</i>	<i>tritici</i>	/11/1965	Wongan Hills Research Station	PERTH 966843
<i>Uromyces</i>	<i>striatus</i>	26/06/2003	Wongan Hills Research Station	PERTH 6234410
<i>Uromycladium</i>	<i>tepperianum</i>	5/09/1924	Wongan Hills	PERTH 794112

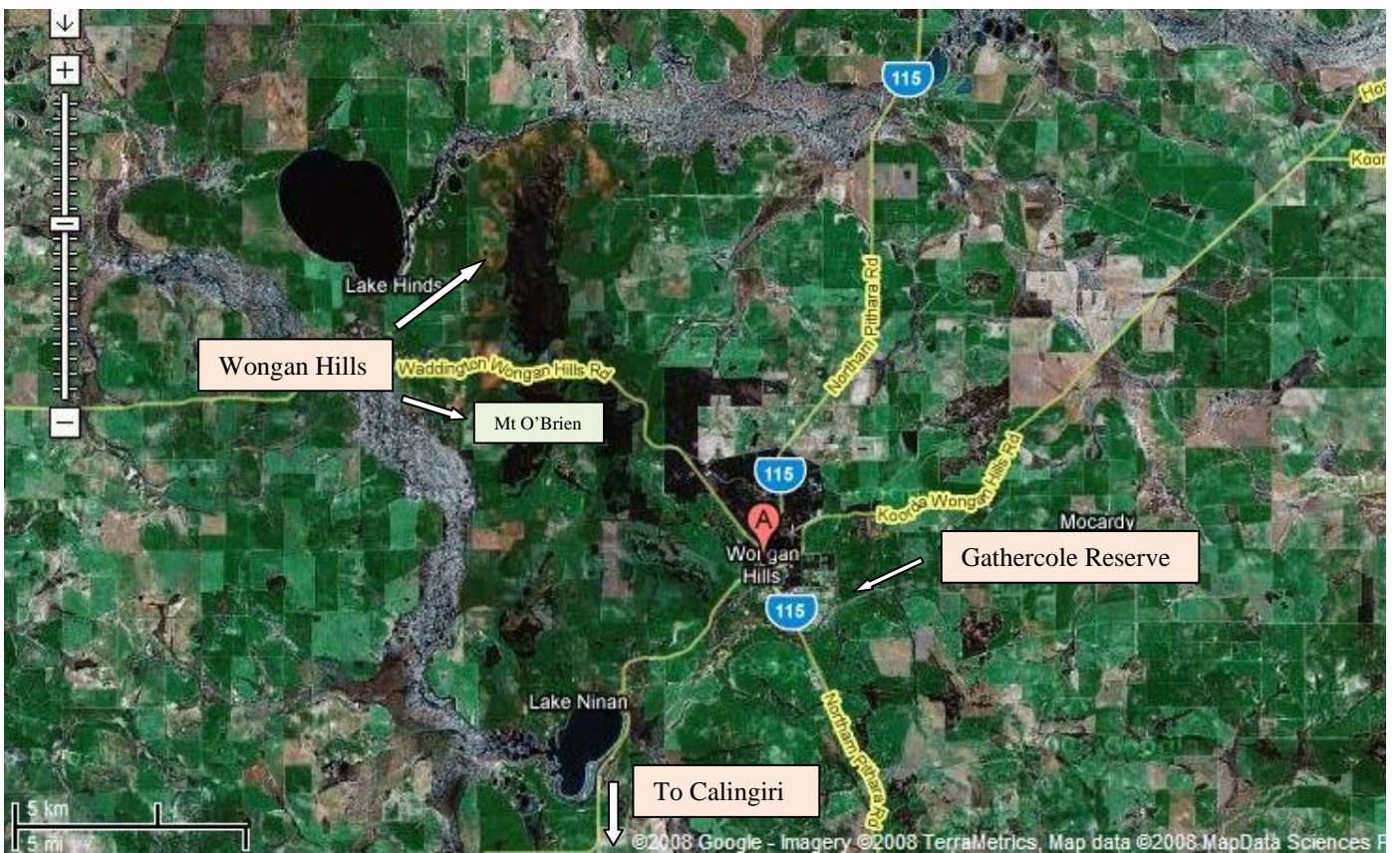
**Table 8: Fungi recorded at Wongan Hills during a Western Australian Naturalists' Club regional survey in 1974 & 1975** (Data extracted from Kenneally, 1977).

Also indicated if the same species as recorded in the 1970's was recorded in 2008.

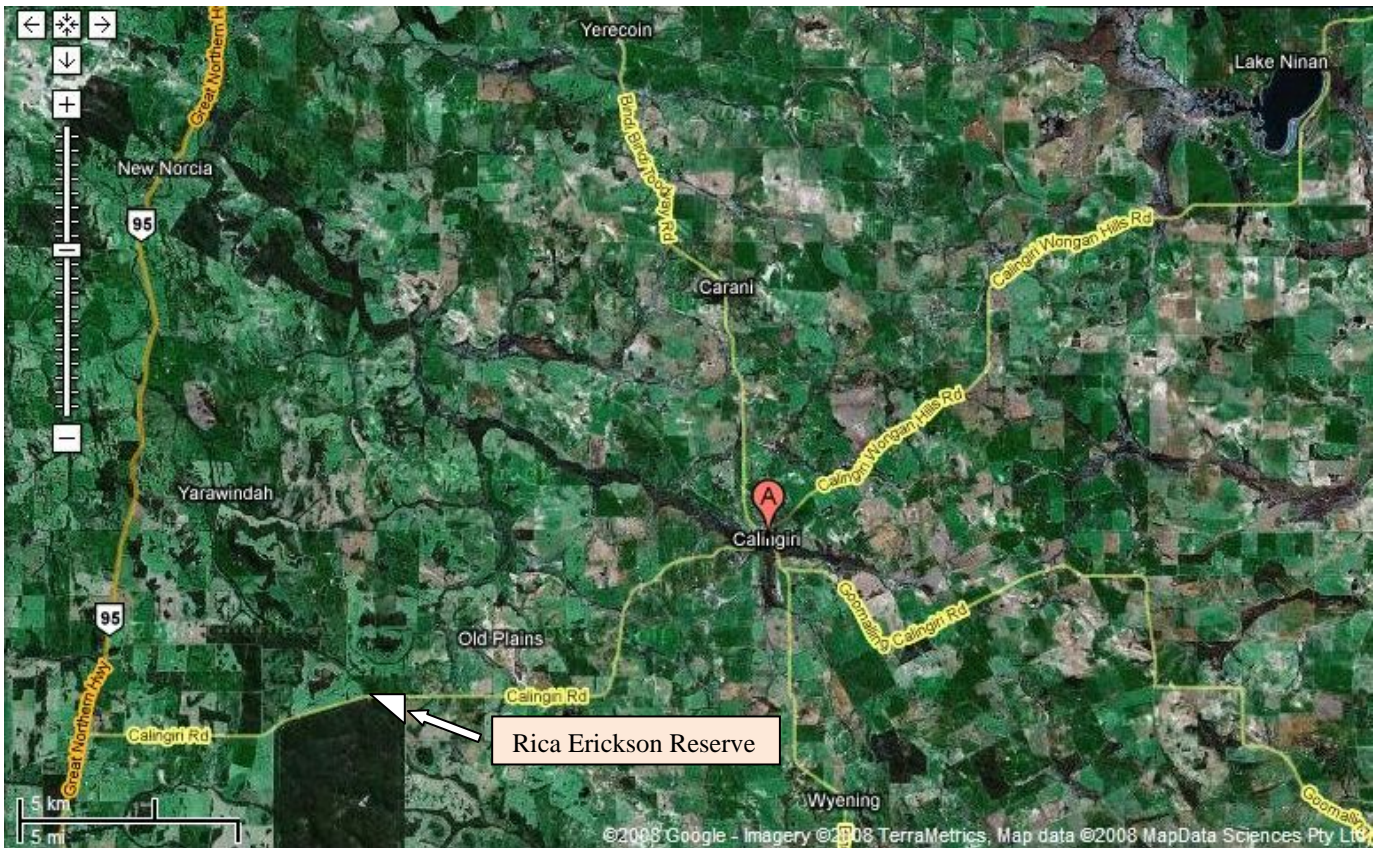
Fungus	Location	Also recorded in 2008?
<i>Agaricus</i> sp.	Monks Well	maybe
<i>Amanita</i> sp.	Monks Well + Drummonds Gully	maybe
<i>Boletus pallidus</i>	Monks Well	no
<i>Boletus</i> sp.	Monks Well + Drummonds Gully	no
<i>Bovista</i> sp.	Monks Well	maybe
<i>Clitocybe</i> sp.	Drummonds Gully + Mt Rupert	maybe
<i>Clitocybe</i> sp. A	Monks Well	maybe
<i>Clitocybe</i> sp. B	Monks Well	maybe
<i>Collybia</i> spp.	Monks Well	no
<i>Coltricia oblectans</i>	Monks Well	no
<i>Coprinus</i> spp.	Monks Well	no
<i>Cortinarius radicans</i>	Monks Well + Drummonds Gully	no
<i>Cortinarius</i> sp.	Monks Well + Drummonds Gully + Mt Rupert	no
<i>Crepidotus mollis</i>	Monks Well	no
<i>Geastrum</i> sp.	Monks Well + Mt Rupert	maybe
<i>Hexagonia</i> sp.	Mt Rupert	no
<i>Inocybe</i> spp.	Mt Rupert	no
<i>Lepiota procera</i>	Monks Well	no
<i>Lycoperdon</i> sp.	Monks Well	no
<i>Marasmius</i> sp.	Drummonds Gully	no
<i>Melanoleuca melaleuca</i>	Monks Well	no
<i>Melanoleuca</i> sp.	Mt Rupert	no
<i>Panaeolus</i> spp.	Monks Well + Mt Rupert	no
<i>Panus fasciatus</i>	Monks Well + Mt Rupert	yes
<i>Paxillus</i> sp.	Drummonds Gully	no
<i>Peziza vesiculosa</i>	Monks Well	no
<i>Phellinus</i> sp.	Monks Well + Mt Rupert	maybe
<i>Phylloporus bella</i>	Monks Well + Mt Rupert	no
<i>Pisolithus</i> sp.	Monks Well	no
<i>Pleurotus</i> sp.	Drummonds Gully	no
<i>Poronia punctata</i>	Mt Rupert	no
<i>Pycnoporus coccineus</i>	Monks Well + Mt Rupert	yes
<i>Ramaria</i> sp.	Monks Well	no
<i>Russula erumpens</i>	Monks Well + Mt Rupert	no
<i>Russula</i> sp.	Mt Rupert	no
<i>Stropharia</i> sp.	Monks Well	no
<i>Suillus</i> sp.	Drummonds Gully	no
<i>Thelephora "infundibuliformis"</i>	Drummonds Gully	no
<i>Tremella mesenterica</i>	Mt Rupert	no
<i>Tulostoma brumale</i>	Drummonds Gully	no
<i>Volvariella gloiocephala</i>	Monks Well	no



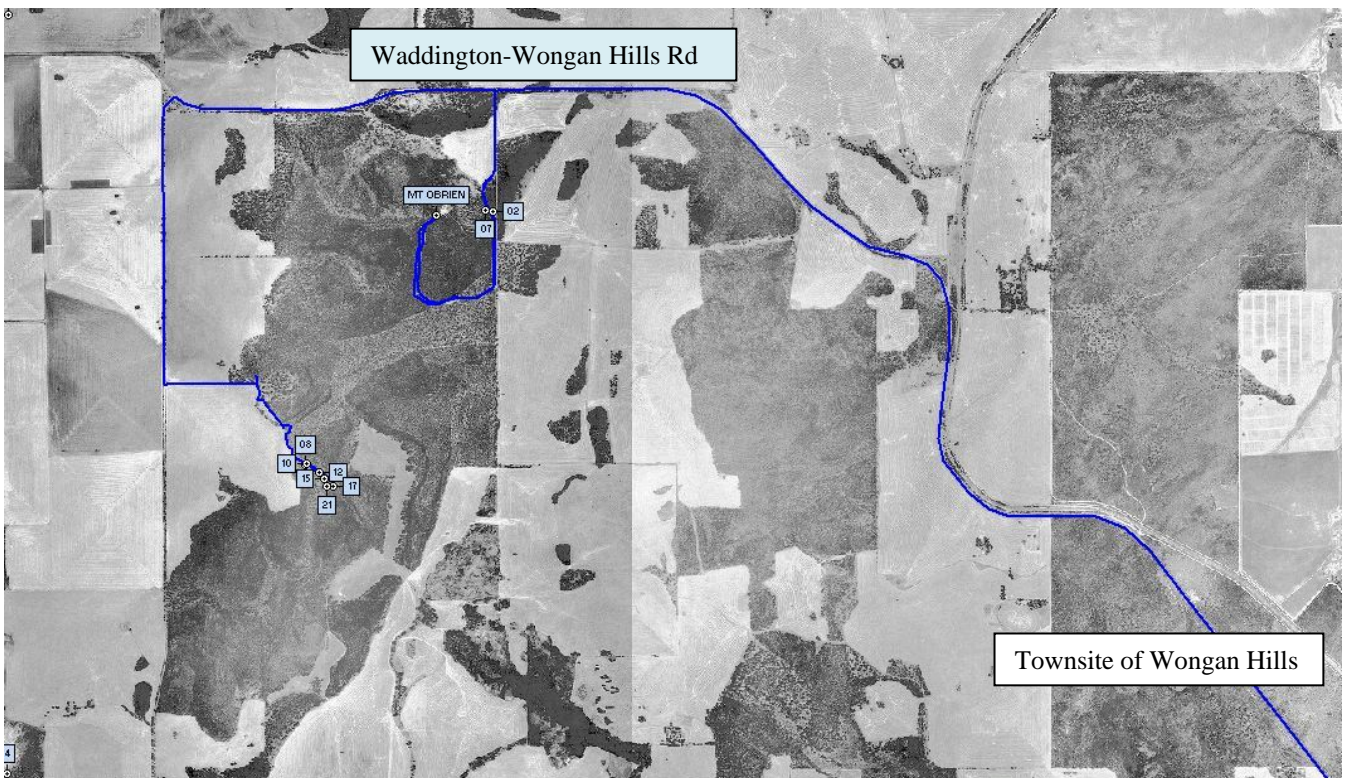
**Map1:** South west of Western Australia showing the location of Wongan Hills



**Map 2:** Google Map showing location of Wongan Hills and Gathercole Reserve in relation to the town of Wongan Hills



**Map 3:** Google Map showing the location of the Rica Erickson Reserve in relation to the nearest town, Calingiri.



Aerial photo 1 showing the blue track of the survey site in the hills around Wongan Hills, 31 May 2008.

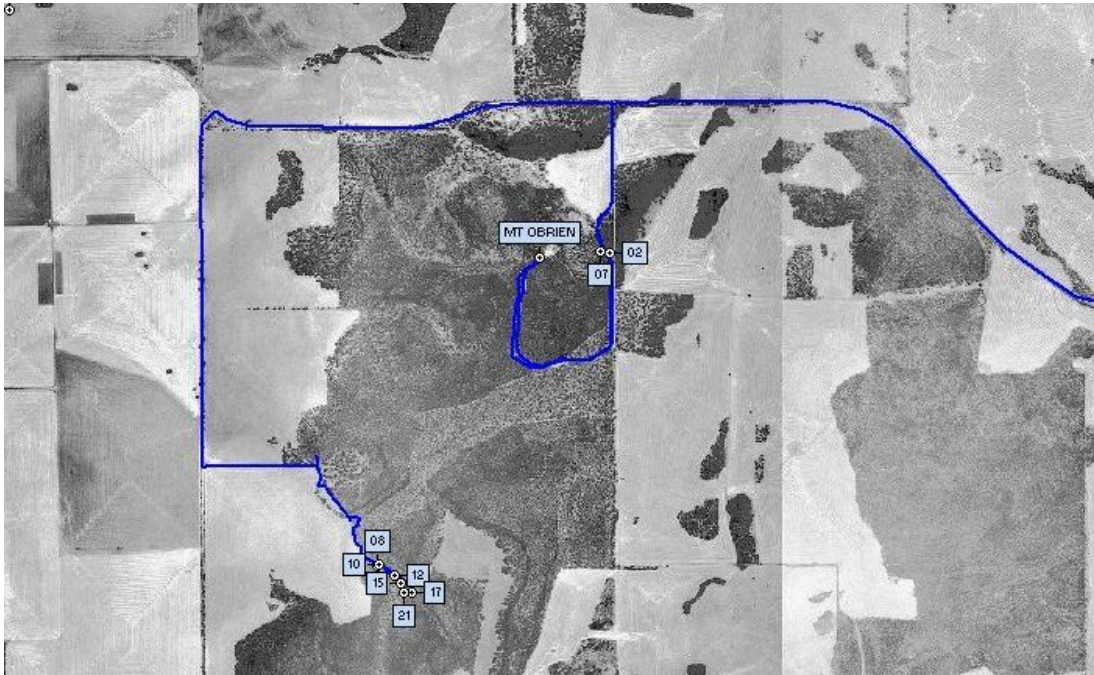


Aerial photo 2 showing the yellow track of the survey site at Gathercole Reserve, 1 June 2008.












Aerial photo 3 showing the yellow track of the survey site at the Rica Erickson Reserve, 2 June 2008.

**Georeferenced Track and Photos** Mt O'Brien Fungi walk, Wongan Hills, 31 May 2008.



The numbers on the coloured dots in the fungi photos correspond to the collecting number and usually **do not** match the photo number. It is the **photo number** preceding the fungus name that correlates with the site on the map above.

<p><b>Event: Wongan Hills - Mt O'Brien Date: 31/05/2008</b>                  Group Number: 231 Leader Neale Bougher, Photographer: Roz Hart</p>	
	<p><b>02 <i>Trichaptum</i> sp.</b></p> <p style="text-align: right;">Specimen ID: 3549</p> <p>Growing at the base of dead eucalypt in woodland.                  Latitude: 30° 50' 10.4"South Longitude: 116° 38' 35"East                  31/05/2008 Image: WH80_231RH02                  Vouchered WA Herbarium: <b>E9101</b></p>
	<p><b>07 <i>Phellinus</i> sp.</b></p> <p style="text-align: right;">Specimen ID: 3550</p> <p>On stump, persistent on rough bark.                  Latitude: 30° 50' 10.4"South Longitude: 116° 38' 35"East                  31/05/2008 Image: WH80_231RH07</p>
	<p><b>08 <i>Geastrum</i> sp.</b></p> <p style="text-align: right;">Specimen ID: 3551</p> <p>Growing in ironstone-loam roadside in open melaleuca woodland.                  Latitude: 30° 51' 2.5"South Longitude: 116° 37' 50"East                  31/05/2008 Image: WH80_231RH08</p>

	<p>10 <i>Tulostoma</i> sp. <span style="float: right;"><b>Stalked Puffball</b></span>                      Specimen ID: 3552                      Growing on the roadside in ironstone-loam next to open melaleuca woodland.                      Latitude: 30° 51' 2.5"South Longitude: 116° 37' 50"East                      31/05/2008 Image: WH80_231RH10                      Vouchered WA Herbarium: <b>E9102</b></p>
	<p>12 <i>Pycnoporus coccineus</i> <span style="float: right;"><b>Scarlet Bracket Fungus</b></span>                      Specimen ID: 3553                      Growing on dead wandoo in open woodland.                      Latitude: 30° 51' 4.3"South Longitude: 116° 37' 53"East                      31/05/2008 Image: WH80_231RH12</p>
	<p>13 <i>Geastrum</i> sp. <span style="float: right;">Specimen ID: 3554</span>                      Growing in ironstone-loam by roadside near woodland.                      Latitude: 30° 51' 4.8"South Longitude: 116° 37' 54.4"East                      31/05/2008 Image: WH80_231RH13                      Vouchered WA Herbarium: <b>E9103</b></p>
	<p>15 <i>Phellinus</i> sp. <span style="float: right;">Specimen ID: 3555</span>                      Growing on living <i>Allocasuarina campestris</i> in allocasuarina woodland.                      Latitude: 30° 51' 5.5"South Longitude: 116° 37' 54.3"East                      31/05/2008 Image: WH80_231RH15</p>
	<p>17 <i>Geastrum</i> sp. <span style="float: right;">Specimen ID: 3556</span>                      Growing in ironstone-loam in allocasuarina woodland.                      Latitude: 30° 51' 4.8"South Longitude: 116° 37' 56.4"East                      31/05/2008 Image: WH80_231RH17                      Vouchered WA Herbarium: <b>E9104</b></p>
	<p>21 <i>Phaeotrametes decipiens</i> <span style="float: right;"><b>Lavender-pored Bracket Fungus</b></span>                      Specimen ID: 3557                      On dead wood (possibly <i>Allocasuarina campestris</i>) in woodland.                      Latitude: 30° 51' 7"South Longitude: 116° 37' 54.5"East                      31/05/2008 Image: WH80_231RH21                      Vouchered WA Herbarium: <b>E9105</b></p>



## Georeferenced Track and Photos

Gathercole Nature Reserve Fungi walk, Wongan Hills, 1 June 2008.



The numbers on the coloured dots in the fungi photos correspond to the collecting number and usually **do not** match the photo number. It is the **photo number** preceding the fungus name that correlates with the site on the map above.

**Event: Wongan Hills - Gathercole Nature Reserve Date: 1/06/2008**

Group Number: 232 Leader Neale Bougher  
Photographer: Roz Hart



**04 *Pycnoporus coccineus* Scarlet Bracket Fungus**

Specimen ID: 3558

Growing on burnt and dead *Melaleuca* sp. in open forest of melaleuca and *Hakea petiolaris*.

Latitude: 30° 54' 47.4"South Longitude: 116° 47' 50.8"East

1/06/2008

Image: WH82\_231RH04



**06 *Phellinus* sp.**





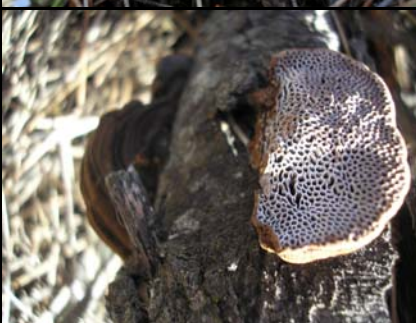

Specimen ID: 3559

Growing on living *Allocasuarina campestris* in open forest.

Latitude: 30° 54' 46.4"South Longitude: 116° 47' 49.8"East

1/06/2008

Image: WH82\_232RH06

	<p>08 <i>Poronia erici</i> <span style="float: right;"><b>Dung Buttons</b></span>                      Specimen ID: 3560                      On kangaroo dung amongst litter in allocasuarina woodland.                      Latitude: 30° 54' 46.8"South Longitude: 116° 47' 49.7"East                      1/06/2008 <b>Fungimap Target</b> Image: WH82_232RH08</p>
	<p>10 <b>Undetermined Agaric</b> <span style="float: right;">Specimen ID: 3561</span>                      Growing in sandy gritty litter in woodland.                      Latitude: 30° 54' 48.1"South Longitude: 116° 47' 51"East                      1/06/2008 Image: WH82_232RH10                      Vouchered WA Herbarium: <b>E9108</b></p>
	<p>14 <i>Puccinia myrsiphilli</i> <span style="float: right;">Specimen ID: 3562</span>                      On branch of living wattle in woodland.                      Latitude: 30° 54' 48.1"South Longitude: 116° 47' 51"East                      1/06/2008 Image: WH82_232RH14</p>
	<p>16 <i>Psathyrella</i> sp. <span style="float: right;">Specimen ID: 3563</span>                      Growing in sandy soil beneath allocasuarina in woodland.                      Latitude: 30° 54' 45.8"South Longitude: 116° 47' 50.1"East                      1/06/2008 Image: WH82_232RH16                      Vouchered WA Herbarium: <b>E9109</b></p>
	<p>18 <i>Phaeotrametes decipiens</i> <span style="float: right;"><b>Lavender-pored Bracket Fungus</b></span>                      Specimen ID: 3564                      On dead wood in allocasuarina woodland.                      Latitude: 30° 54' 45.8"South Longitude: 116° 47' 51"East                      1/06/2008 Image: WH82_232RH18                      Vouchered WA Herbarium: <b>E9110</b></p>
	<p>26 <i>Tubaria</i> sp. <span style="float: right;">Specimen ID: 3565</span>                      Amongst litter attached to allocasuarina needles in woodland.                      Latitude: 30° 54' 45.8"South Longitude: 116° 47' 50.1"East                      1/06/2008 Image: WH82_232RH26</p>

## Georeferenced Track and Photos

Rica Erickson Nature Reserve Fungi walk, 2 June 2008.



The numbers on the coloured dots in the fungi photos correspond to the collecting number and usually **do not** match the photo number. It is the **photo number** preceding the fungus name that correlates with the site on the map above.

**Event: Wongan Hills – Rica Erickson Reserve Date: 1/06/2008**

Group Number: 233 Leader Roz Hart

Photographer: Roz Hart



10 *Entoloma* sp.

Specimen ID: 3567

Growing in sandy-gravel near myrtaceae plants (possibly *Calothamnus* sp.).

Latitude: 31° 8' 42.1"South Longitude: 116° 17' 43.7"East

1/06/2008

Image: RE81\_233RH10



14 *Amanita xanthocephala* **Yellow Headed Amanita**

Specimen ID: 3568


Growing in loamy sand under *Nuytsia floribunda*.

Latitude: 31° 8' 41.7"South Longitude: 116° 17' 43.8"East




1/06/2008

**Fungimap Target**

Image: RE81\_233RH14

	<p><b>15 <i>Mycena</i> sp. grey</b></p> <p style="text-align: right;">Specimen ID: 3569</p> <p>Growing in sandy loam under <i>Nuytsia floribunda</i>.          Latitude: 31° 8' 41.8"South Longitude: 116° 17' 43.8"East          1/06/2008 <span style="float: right;">Image: RE81_233RH15</span></p>
	<p><b>17 <i>Psilocybe coprophila</i></b></p> <p style="text-align: right;">Specimen ID: 3570</p> <p>On kangaroo dung in woodland.          Latitude: 31° 8' 42.1"South Longitude: 116° 17' 43.9"East          1/06/2008 <span style="float: right;">Image: RE81_233RH17</span></p>
	<p><b>23 <i>Mycena</i> sp. cream</b></p> <p style="text-align: right;">Specimen ID: 3571</p> <p>Amongst litter in <i>Nuytsia floribunda</i> woodland.          Latitude: 31° 8' 42.1"South Longitude: 116° 17' 43.9"East          1/06/2008 <span style="float: right;">Image: RE81_233RH23</span></p>
	<p><b>25 <i>Psathyrella</i> sp.</b></p> <p style="text-align: right;">Specimen ID: 3573</p> <p>Growing in loamy-sand in woodland.          Latitude: 31° 8' 42.1"South Longitude: 116° 17' 43.9"East          1/06/2008 <span style="float: right;">Image: RE81_233RH25</span></p>
	<p><b>26 <i>Phellinus</i> sp.</b></p> <p style="text-align: right;">Specimen ID: 3574</p> <p>Growing on dead marri in <i>Nuytsia floribunda</i> woodland.          Latitude: 31° 8' 41.9"South Longitude: 116° 17' 43.7"East          1/06/2008 <span style="float: right;">Image: RE81_233RH26</span></p>
	<p><b>27 <i>Inocybe arenacolens</i></b></p> <p style="text-align: right;">Specimen ID: 3575</p> <p>Growing on loamy sand in <i>Nuytsia floribunda</i> woodland.          Latitude: 31° 8' 41.8"South Longitude: 116° 17' 44.5"East          1/06/2008 <span style="float: right;">Image: RE81_233RH27</span></p>

	<p><b>29 <i>Amanita</i> sp.</b></p> <p style="text-align: right;">Specimen ID: 3576</p> <p>Growing on loamy sand in degraded open <i>Eucalyptus wandoo-Corymbia calophylla</i> (wandoo-marri) woodland.                  Latitude: 31° 8' 42.5"South Longitude: 116° 17' 44.3"East                  1/06/2008 <span style="float: right;">Image: RE81_233RH29</span></p>
	<p><b>33 <i>Undetermined Bolete</i></b></p> <p style="text-align: right;">Specimen ID: 3577</p> <p>Growing in sandy-gravel in degraded <i>Eucalyptus wandoo-Corymbia calophylla</i> (wandoo-marri) woodland.                  Latitude: 31° 8' 43.7"South Longitude: 116° 17' 45.7"East                  1/06/2008 <span style="float: right;">Image: RE81_233RH33</span></p>
	<p><b>34 <i>Crepidotus nephrodes</i></b></p> <p style="text-align: right;">Specimen ID: 3578</p> <p>On dead marri in degraded <i>Eucalyptus wandoo-Corymbia calophylla</i> (wandoo-marri) woodland.                  Latitude: 31° 8' 43.7"South Longitude: 116° 17' 44.7"East                  1/06/2008 <span style="float: right;">Image: RE81_233RH34</span></p>
	<p><b>39 <i>Tubaria</i> sp.</b></p> <p style="text-align: right;">Specimen ID: 3579</p> <p>On dead marri bark amongst litter in degraded <i>Eucalyptus wandoo-Corymbia calophylla</i> (wandoo-marri) woodland.                  Latitude: 31° 8' 43.7"South Longitude: 116° 17' 44.7"East                  1/06/2008 <span style="float: right;">Image: RE81_233RH39</span></p>
	<p><b>41 <i>Clitocybe semiocculta</i></b> <span style="float: right;"><b>Shy Funnel Cap</b></span></p> <p style="text-align: right;">Specimen ID: 3580</p> <p>On dead marri bark in degraded <i>Eucalyptus wandoo-Corymbia calophylla</i> (wandoo-marri) woodland.                  Latitude: 31° 8' 43.7"South Longitude: 116° 17' 44.7"East                  1/06/2008 <span style="float: right;">Image: RE81_233RH41</span></p>
	<p><b>44 <i>Amanita</i> sp.</b></p> <p style="text-align: right;">Specimen ID: 3581</p> <p>Growing in loamy-sand amongst litter in degraded <i>Eucalyptus wandoo-Corymbia calophylla</i> (wandoo-marri) woodland.                  Latitude: 31° 8' 43.7"South Longitude: 116° 17' 44.7"East                  1/06/2008 <span style="float: right;">Image: RE81_233RH44</span></p>

	<p><b>47 <i>Tulostoma</i> sp.</b> <span style="float: right;"><b>Stalked Puffball</b></span>                  Specimen ID: 3582                  Growing in yellow gravelly-sand in degraded <i>Eucalyptus wandoo-Corymbia calophylla</i> (wandoo-marri) woodland.                  Latitude: 31° 8' 43.7"South Longitude: 116° 17' 45.2"East                  1/06/2008 <span style="float: right;">Image: RE81_233RH47</span></p>
	<p><b>51 <i>Lycoperdon</i> sp.</b> <span style="float: right;"><b>Puffball</b></span>                  Specimen ID: 3583                  Growing in yellow gravelly-sand in degraded <i>Eucalyptus wandoo-Corymbia calophylla</i> (wandoo-marri) woodland.                  Latitude: 31° 8' 44.4"South Longitude: 116° 17' 46.2"East                  1/06/2008 <span style="float: right;">Image: RE81_233RH51</span></p>
	<p><b>54 <i>Lichenomphalia</i> sp.</b> <span style="float: right;">Specimen ID: 3584</span>                  Growing in yellow gravelly-sand in degraded <i>Eucalyptus wandoo-Corymbia calophylla</i> (wandoo-marri) woodland.                  Latitude: 31° 8' 44.4"South Longitude: 116° 17' 46.2"East                  1/06/2008 <span style="float: right;">Image: RE81_233RH54</span></p>