

Examples of woylie skin and fur conditions associated with declines in the Upper Warren populations

September 2009

Adrian Wayne, Marika Maxwell

Ph: +61 (0)8 9771 7992; Mb: 0427 755 165;

Email: adrian.wayne@dec.wa.gov.au

Prelude

Skin and fur conditions have been associated with the woylie declines within the Upper Warren region (Perup and Kingston populations). This is in contrast to the stable, apparently healthy Karakamia population. Some examples are provided here, including the descriptive format used for recording them. Comments and feedback are welcome.

Coding legend

Descriptor:

- **FL** Fur loss
- **Sc** Scabs – dry
- **W** Wounds
- **Mo** Moist
- **D** Discharge
- **B** Blood
- **Br** Bruising
- **FK** Flaky skin, dry
- **R** Skin reddening / inflammation
- **FR** Fur regrowth (inc. % regrown)
- **H** Hyperkeratosis (skin thickening)
- **C** Cloudy eye

Abnormality Code:

- None
- 1** Mild
- 2** Moderate
- 3** Severe
- X** Not examined

Time Scale:

- C** Chronic
- A** Acute (new / recent)
- Sr** Scar
- TD** Trap damage / injury
- T** Treatment (e. g. Betadine applied)

Body and coat condition comparison



Good body condition (BC-4);
Good coat condition (CC-4)



Poor body condition (BC-2); Poor coat
condition (CC-2); Mild fur loss (FL1)

Ectoparasite count / load



Ectoparasite count (EC) = sum of fixed ectoparasites on both ears.

Ectoparasite load = estimated burden (counted 1-10, then multiples of 10 or 100 dependent on quantity), according to location on body, for all ectoparasite groups (ticks, fleas, lice, lice eggs, mites)



Ectoparasite count (EC) = 50+

Ectoparasite load (Heavy)

Ticks	53	Ears (50+), Neck (3)
Lice	10	Abdomen / rump
Lice eggs	200+	Rump / tail base

NB: only ticks in view (Example only)

Fur loss, scabbing

(Ectoparasite related)



Throat / chest – Moderate fur loss (FL2);
Severe scabbing (Sc3)

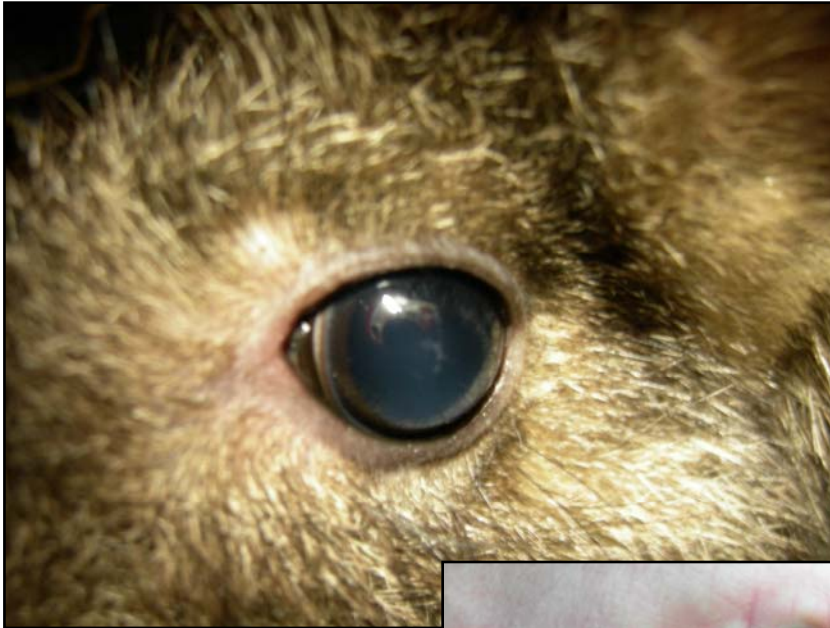


Mouth / chin – Moderate scabbing (Sc2)



Throat – Mild fur loss (FL1); Mild
scabbing (Sc1)

Eye (periocular) conditions



Normal
- No abnormality



Mild fur loss (FL1)



Mild scabbing and
fur loss (Sc1, FL1)

Eye condition continued...



Moderate scabbing and fur loss (Sc2; FL2)



Severe scabbing (Sc3); Mod. fur loss (FL2)



Severe scabbing and fur loss (Sc3, FL3)



Severe scabbing and fur loss (Sc3, FL3)

Eye condition continued...



Ectoparasites - ticks



Papilloma growth

Lesions and scabbing around mouth



Severe scabbing (Sc3); Moderate fur loss (FL2)

Back and rump fur loss and skin abnormalities (anterior of animal at top of image)



Severe fur loss (FL3); Moderate scabbing (Sc2); Mild flaky skin (FK1)

Skin conditions



Severe flaky skin (FK3)



Mild flaky skin (FK1) – note tail shaved for blood sampling



Skin condition – reddish blotches (R)

Skin scabbing & scratches



Moderate scabbing and fur loss (Sc2, FL2). Multiple scratches.



Mild scabbing and fur loss – (Sc1, FL1)



Fur regrowth – $\frac{1}{2}$ length

Tail – skin thickening, fur loss



Normal - No abnormality



Severe fur loss (FL3); Mild scabbing, fresh (Sc1)



Mild hyperkeratosis (H1)

Tail condition continued...



Mild fur loss and flaky skin (FL1, FK1)



Moderate fur loss and hyperkeratosis (FL2, H2)



Severe fur loss and hyperkeratosis (FL3, H3)



Severe fur loss and hyperkeratosis (FL3, H3), mild scabbing (fresh) (Sc1)

Incidental: Abscesses/Granulomas – (not associated with declines)



Incidental: Other abnormalities



Cyst in pouch

Protrusion of cloaca



Trapping injuries



Head trap damage (TD) - Moderate fur loss and scabbing (FL2, Sc2). Acute.



Broken claw – trap damage (TD)
Severe wound, moderate blood (W3, B2). Acute.

Routine Field Health Check Form

ROUTINE FIELD HEALTH CHECK

Site Name: _____ Survey Type: Grid / Transect / Other
 Date: _____ Survey Point: _____
 Ear Tags/Implant: _____ Species: _____
 Handler: _____ Recorder: _____
 Sample Label: WC _____

Body System Abnormalities

[Multiple combinations of Descriptor x Abnormality Code e.g. Eyes = FL2, Sc1]

Descriptor:	Abnormality Code:	Time Scale:
FL Fur loss	- None	C Chronic
Sc Scabs – dry	1 Mild	A Acute (new / recent)
W Wounds	2 Moderate	
Mo Moist	3 Severe	
D Discharge	X Not examined	Comments: Include extent of abnormality
B Blood		where applicable - Use dimensions (mm).
Br Bruising		Describe abnormality in comments if not clear from
FK Flaky skin, dry		descriptor code. Eg. Fracture/ dislocation, structural
R Skin reddening / inflammation		abnormality.
FR Fur regrowth (inc. % regrown)		
H Hyperkeratosis (skin thickening)		
TD Trap damage / injury		

Body System	Descriptor / Abnormality Code	Time Scale	Comments	Photo
Head				
Eyes				
Ears				
Mouth				
Teeth				
Nose				
Throat / neck				
Collar cond.				
Fore Limbs				
Chest				
Abdomen				
Pouch				
Testes				
Cloaca				
Back/shoulders				
Hind Limbs				
Rump				
Tail				
Respiratory				
Neurological				
Strength				

Physical examination findings: (please elaborate on comments above)

Ectoparasites – Overall ectoparasite load (circle) - none / light / moderate / heavy

[Body count (increments of 10); size/development stage (larvae/nymph/adult)]

	Count	Sampled Y/N	Development Stage	Location on body
Ticks				
Fleas				
Lice				
Louse eggs				
Mites				

Pictorial depiction of body abnormalities: **Please draw where applicable.**

