



# *Shire of Mundaring*

## **Regional Planning and Bush Fires**

### **2002 Fire in South-Western Australian Ecosystems: Impacts and Management**

**April 2002**

**Prepared by:**

**Mick McCarthy**

**Executive Manager Environmental Services  
Eastern Metropolitan Regional Council**

**Bruce Telfer**

**Chief Bush Fire Control Officer  
Shire of Mundaring**



# *Regional Planning and Bushfires*

## **Existing System**

- **Shire of Mundaring has a wide range of land uses**
- **Fire planning is approached from both a Regional perspective and on an individual property basis**
- **Regional approach adopted for:**
  - **education**
  - **community liaison**
  - **application of standards and regulations**



# *Regional Planning and Bushfires*

## **Difficulties of Regional Fire Planning**

- **Multiplicity of land managers, ranging from residential properties to government agencies**
- **Varying objectives and available resources of land managers**
- **Different forecasting districts within the Shire**



# *Regional Planning and Bushfires*

## **Role of the Shire**

- **Chief Bush Fire Control Officer**
  - **Coordination of the VBFB**
  - **Preparation and distribution of information**
  - **Community liaison and education**
  - **Advice on subdivisions**



# *Regional Planning and Bushfires*

## **Fire and Subdivisions**

- **Comment early in the subdivision process**
- **Multidiscipline team approach**
- **Strata developments through to major subdivisions**
- **Education and understanding of fire management throughout the team**
- **Balancing issues of fire management with bushland protection through a consultative process**



# *Regional Planning and Bushfires*

## **Specific subdivision issues**

- **Strategic firebreaks on large subdivisions**
  - located in discussion with developer
  - integrated in the design of the development
  - management responsibilities determined
- **Property specific fire control measures still required**
- **Requirements placed on as conditions of development**



# *Regional Planning and Bushfires*

## **Specific subdivision issues (cont'd)**

- **Access in and out of development**
- **Fuel loads**
- **Strategic placement of building envelopes**
- **Access to water supply**
- **Fire breaks and fire access tracks**



Strategic planning of road transport to provide multiple access routes (i.e. traffic permeability)

6 m wide strategic fire break

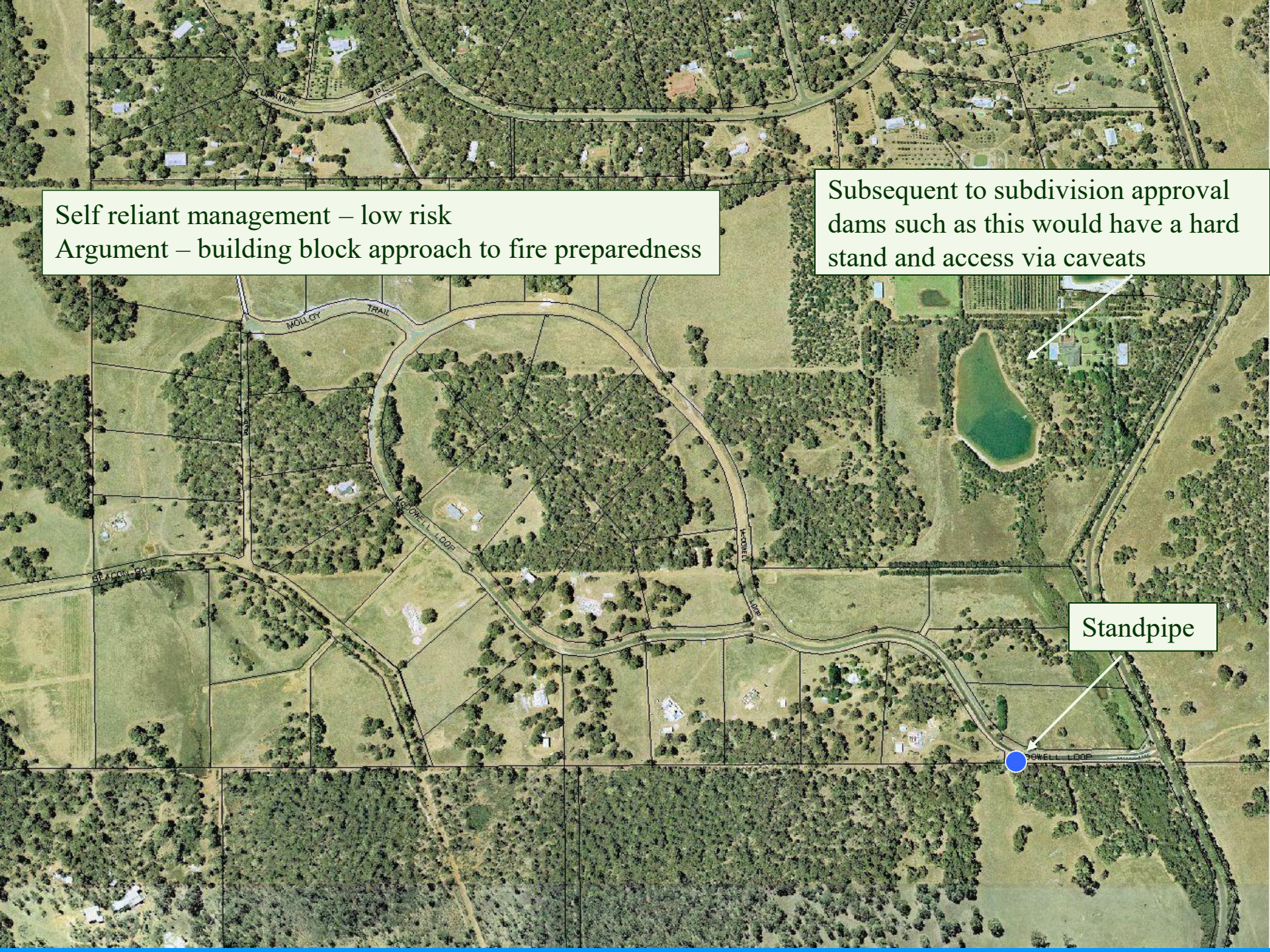
- Gates on all dividing fences to provide access
- Shared maintenance (Shire/Individual)
- Cost sharing
- Whole of property has to comply (perimeter or alternative method)



Self reliant management – low risk  
Argument – building block approach to fire preparedness

Subsequent to subdivision approval  
dams such as this would have a hard  
stand and access via caveats

Standpipe







# *Regional Planning and Bushfires*

## **Property Specific Controls**

- **Critical aspect of fire preparedness**
- **Each land manager must be responsible**
- **Control measures can be customised to the individual property**
- **Costs are borne by all landowners**
- **Minimises the risk to whole of community**



# *Regional Planning and Bushfires*

## **Fire Management and Bushland Protection**

- **Balance vegetation protection against fire control**
- **Legislative measures take priority**
- **Vegetation protected through:**
  - **firebreaks installed around significant vegetation**
  - **minimise size of building envelopes**
  - **locate access-ways appropriately**
  - **clear around buildings not whole building envelope**



# *Regional Planning and Bushfires*

## **Education, Liaison & Co-ordination**

- **Most effective at a regional level**
- **Coordination of VBFB and links with FESA**
- **Sharing of resources and information**
- **Shire produces a range of educational material**
- **Summer 2002/03 - no burning of garden refuse during prohibited season**





# *Regional Planning and Bushfires*

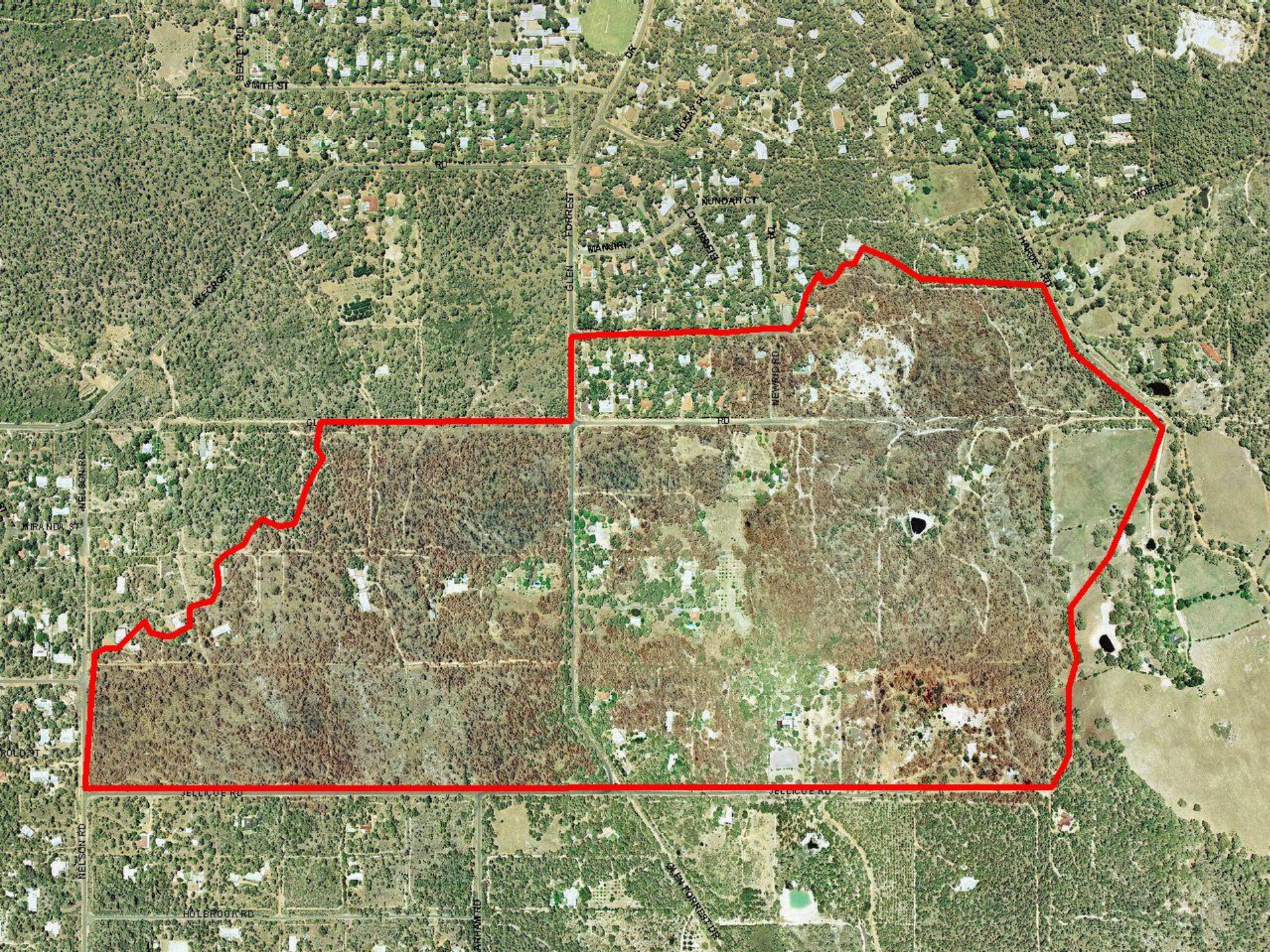
## **Second Speaker**

**Bruce Telfer**

**Chief Bush Fire Control Officer**











# *Regional Planning and Bushfires*

## **Firebreak Alternatives - Residential**

- **Properties of less than 3000m<sup>2</sup>**
- **Substantially cleared**
- **Contain a dwelling**
- **Maintain grass on property at 5cm or less in lieu of firebreak**



TO ALL MUNDARING SHIRE  
RATEPAYERS AND HOUSEHOLDERS  
2001/2002

# FIREBREAK NOTICE

---

FAILURE  
TO MAINTAIN  
A 3 METRE  
FIREBREAK AS PER  
FIREBREAK ORDER  
WILL RESULT  
IN A  
\$100 PENALTY



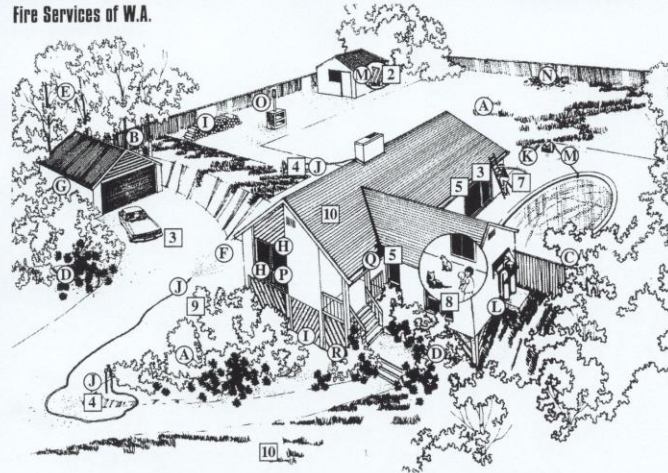
YOUR LEGAL RESPONSIBILITIES  
AND FIRE SAFETY INFORMATION INSIDE



# Regional Planning and Bushfires

## BUSH FIRE - are you prepared?

Fire Services of W.A.



### Long term fire precautions

Have a plan.

If possible, create a 20 metre 'fuel free' zone around your property.

'Spark proof' your house.

- A. Reduce fuel by proper landscaping.
- B. Use smooth-barked trees and prune lower branches.
- C. Clear overhanging trees and shrubs from close to house.
- D. Plant low-flammability shrubs.
- E. Plant a wind-break.
- F. Enclose all eaves.
- G. Fill ends of corrugated roofing.
- H. Fit wire screens to doors, windows, roof vents.
- I. Enclose under-floor space; shift woodpile away from house.
- J. Install taps at strategic places, with long hoses.
- K. Have a stand-by water pump.
- L. Ensure LPG safety valves face away from building.

### Pre-summer checklist

- M. Check firefighting equipment (including standby pump).
- N. Clear fences of rubbish and undergrowth.
- O. Check spark arrester on incinerator.
- P. Check all screens: doors, windows, roof vents.
- Q. Ensure roof is in good condition and gutters are cleared of leaves and rubbish.
- R. See that under-floor area is fully protected.

Dial 000 if a bush fire approaches.

Hang this poster in a prominent place in your home or garage.

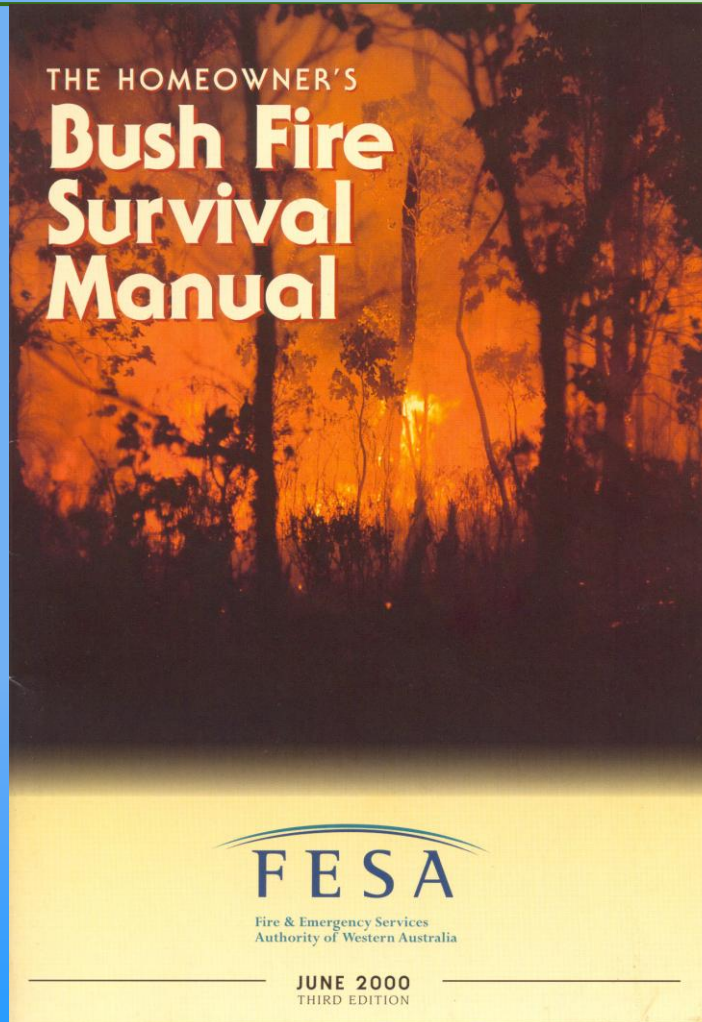
**FESA**  
Fire & Emergency Services Authority  
of Western Australia

### When a bush fire approaches

- 1. Dial 000.
- 2. Fill knapsack sprays and buckets; assemble firefighting equipment.
- 3. Place ladder and hose to protect roof; take car out of garage.
- 4. Attach hoses to taps; check standby pump.
- 5. Clear gutters of rubbish; fill with water.
- 6. Call roll; check children at school.
- 7. Dress in protective clothing.
- 8. Keep small children, nervous people and pets inside; responsible older children could help in some way.
- 9. Wet down house and nearby shrubbery; refill gutters.
- 10. Watch lawn and roof for small fires.
- 11. Follow fire officer's instructions.
- 12. Watch for heat stress.



# *Regional Planning and Bushfires*







# *Regional Planning and Bushfires*

## **Alternative Firebreaks**

- **Controlled burning**
- **Appropriate chemical treatment**
- **Grazing**
- **Physical material removal (maintained)**
- **Use of natural features**
- **Discrete zoning of vegetation**
- **Irrigation systems**





# *Regional Planning and Bushfires*

## **Compliance**

- **Approximately 13,500 rated properties in Mundaring**
- **Inspections (1st December 2001 to 8th March 2002)**
- **4033 properties inspected**
- **259 re-inspected**
- **174 ten day warning letters**
- **70 infringements**



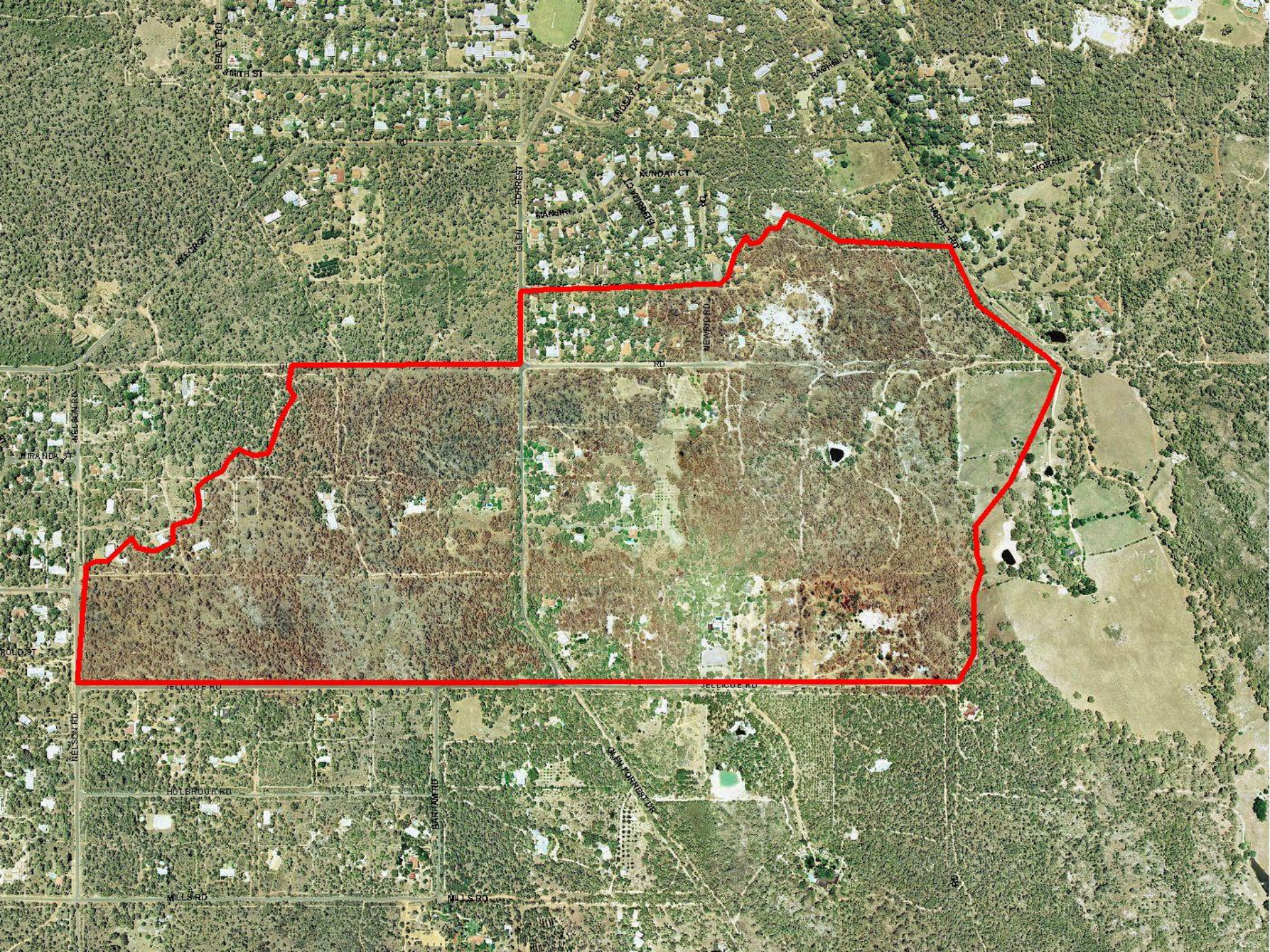




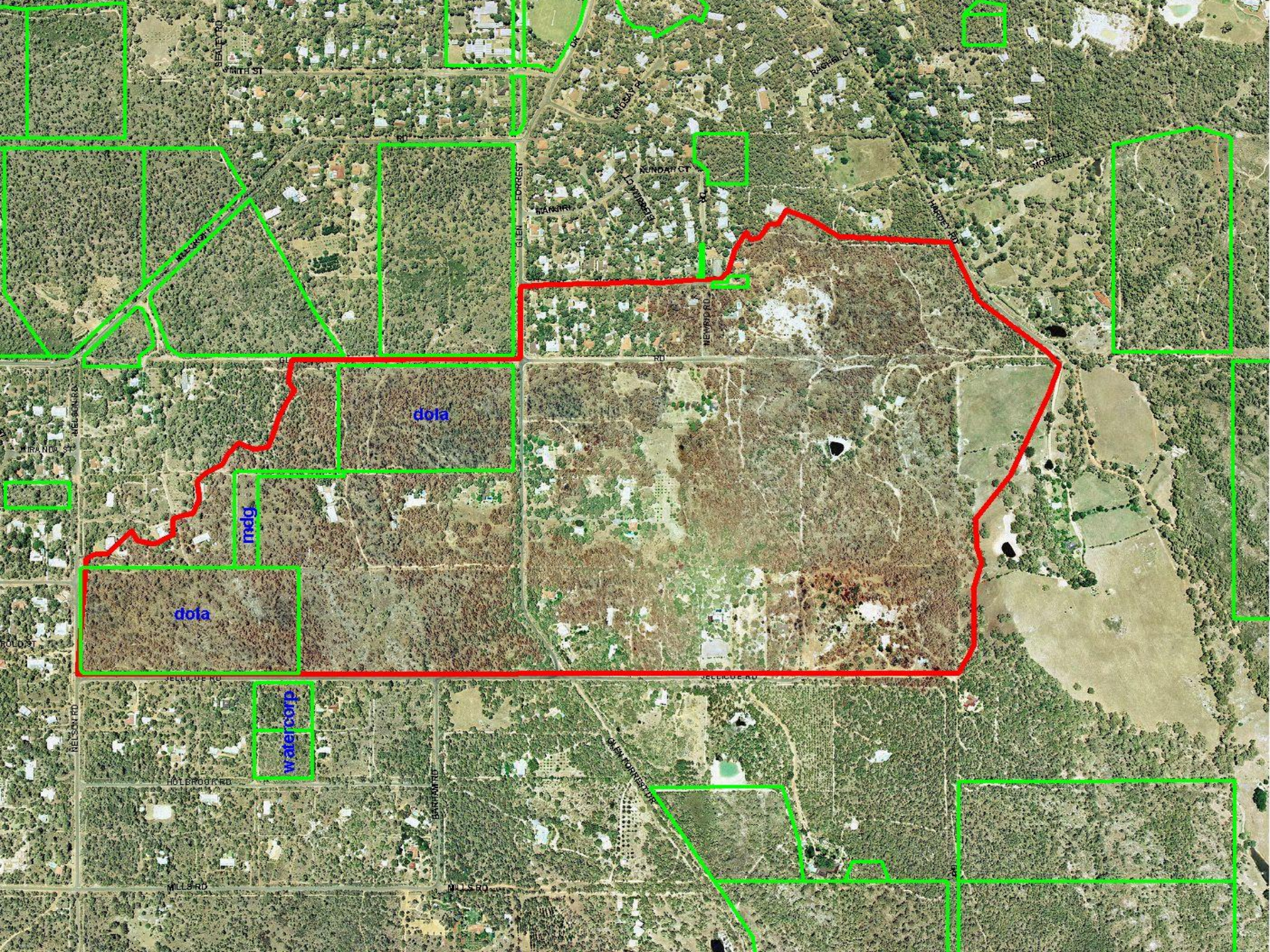
















# *Regional Planning and Bushfires*

## **Rural/Urban Bushfire Threat Analysis**

- **For areas containing bush and communities**
- **Analyse hazards, risks and values to determine threat**
- **Community is a significant part of the process**
- **Weighting given to components**
- **Score out of 300**





# *Regional Planning and Bushfires*

## **Conclusions**

- **The Shire is a diverse locality**
- **Regional fire planning is most suited to liaison, education, coordination and training**
- **Importance of placing appropriate conditions on subdivisions during planning stages**



# *Regional Planning and Bushfires*

## **Conclusions (cont'd)**

- **Fire preparedness is critical at the individual landholder level**
- **Strategic firebreaks are only part of the solution and should not be relied upon**
- **Mundaring is using areas previously burnt to create low hazard areas to reduce future threat**



# *Regional Planning and Bushfires*

## **Conclusions (cont'd)**

- **Low hazard areas used as “safe zones”**
- **Seek a balance between fire control and bush preservation**
- **Continue to work with the community**