

Aborigines, settlers and native animals: Outline of a zoological history of south-west Western Australia

Ian Abbott

Department of Conservation and Land Management

Presentation to the Royal Western Australian Historical Society

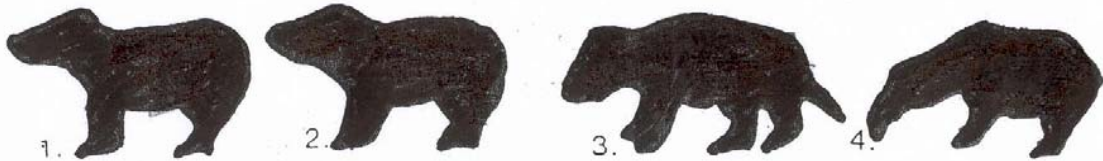
21 May 2003



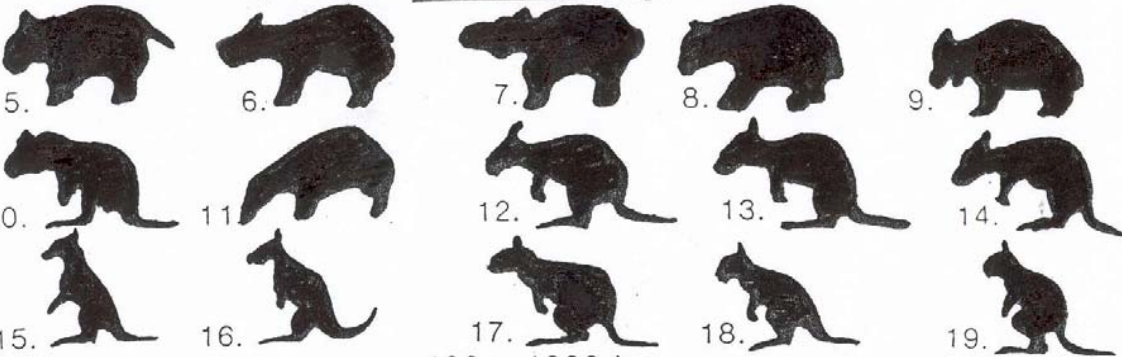
Period I:

50 000 years BP to 1826

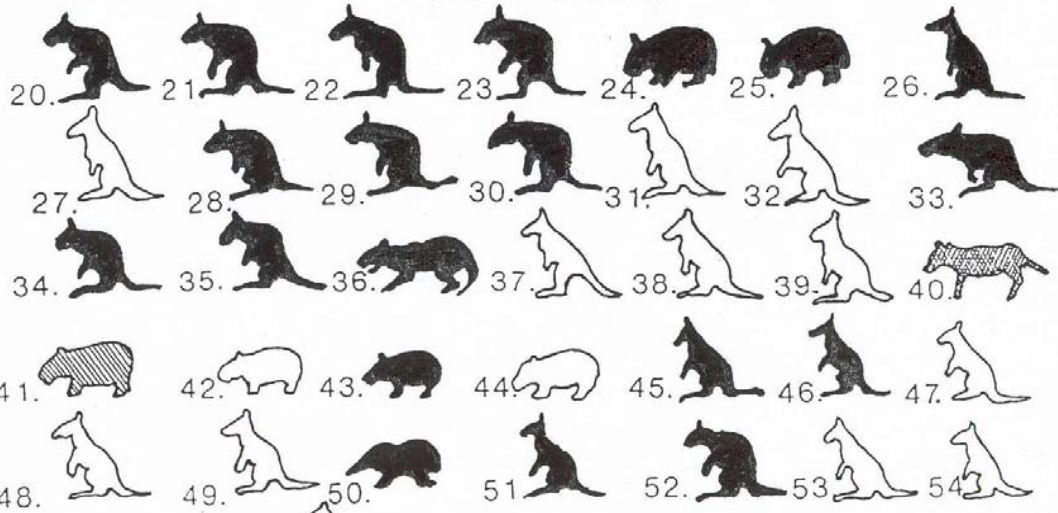




1000 - 2000 kg.



100 - 1000 kg.



10 - 100 kg.

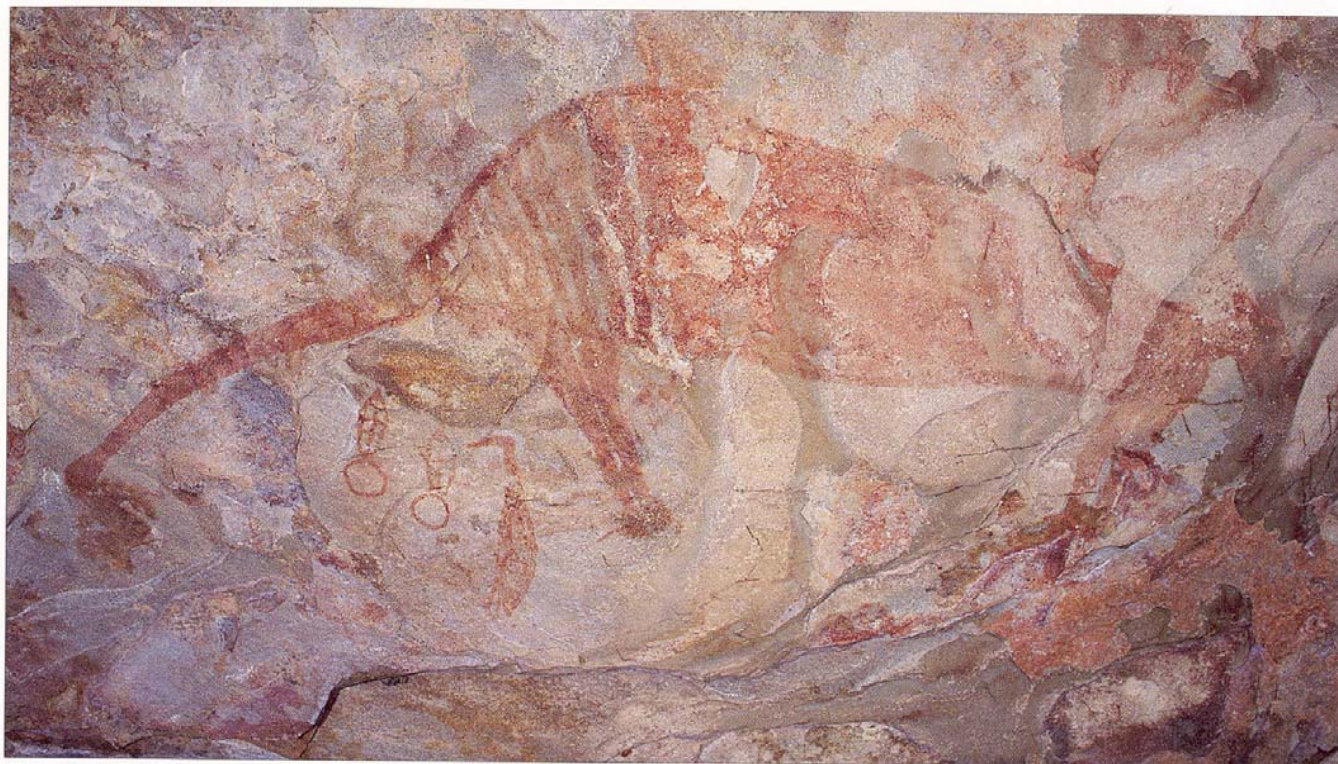


Plate 580

Plate 580/Fig 654

Thylacine depictions continue into more recent art periods, such as this 450x1350mm example from the Clothes Peg Figure Period. While having unmistakable stylistic features of that period, such as head, legs and 'squared' neck, it incorporates all the basic characteristics, including the tufted tail-tip.

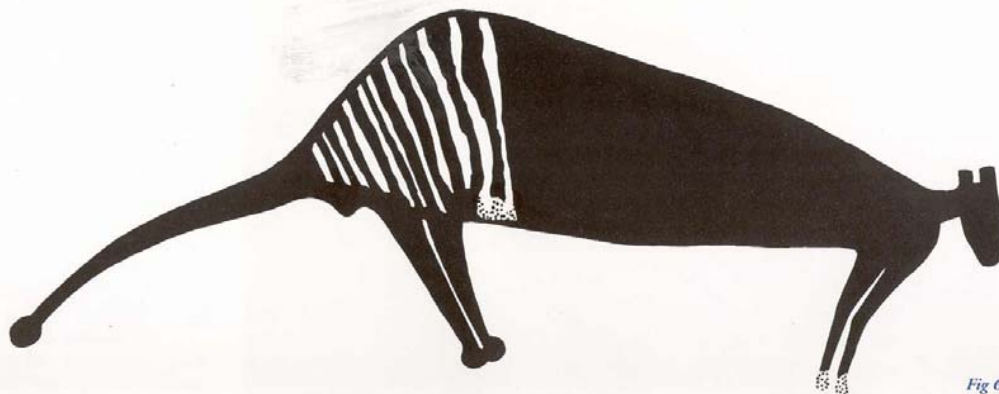
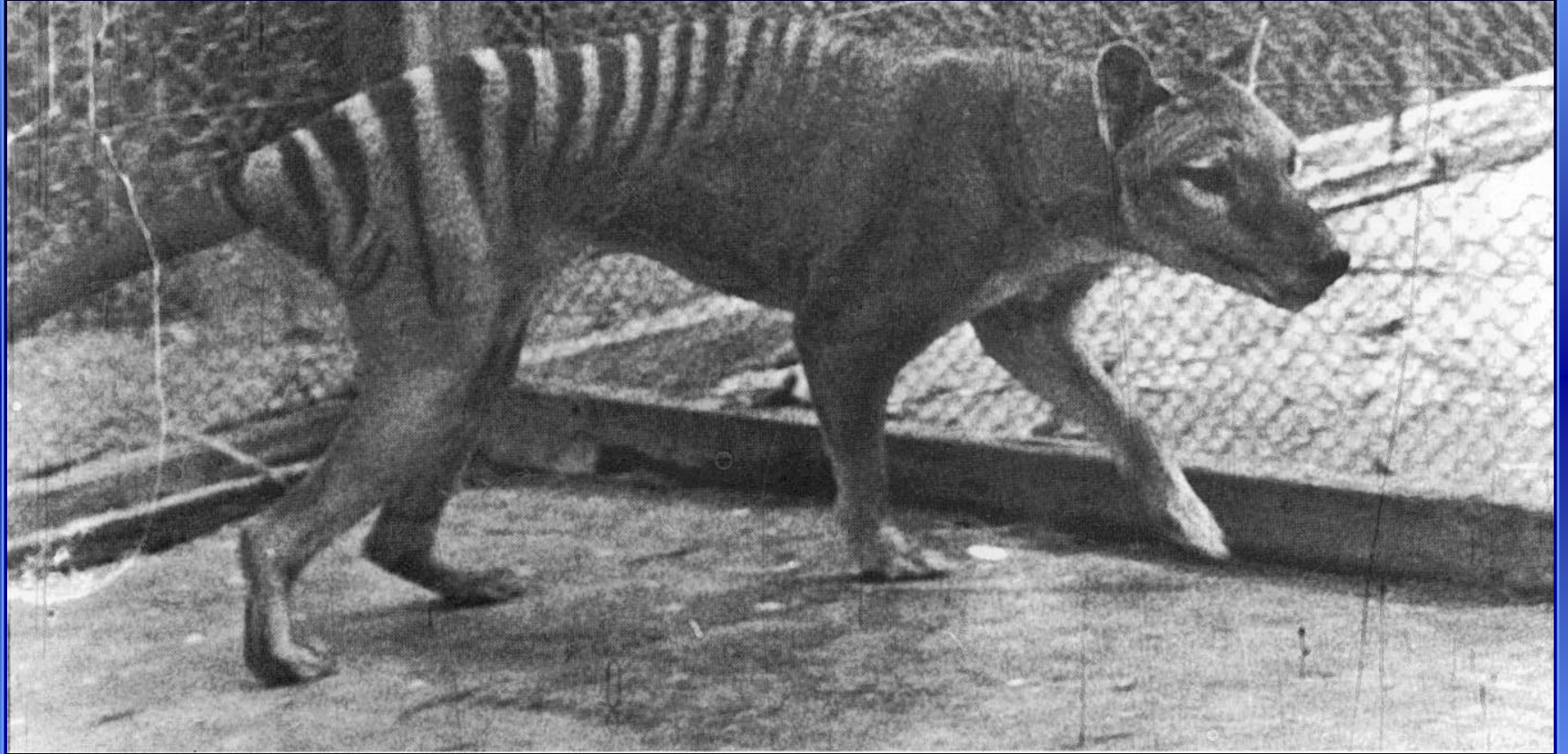
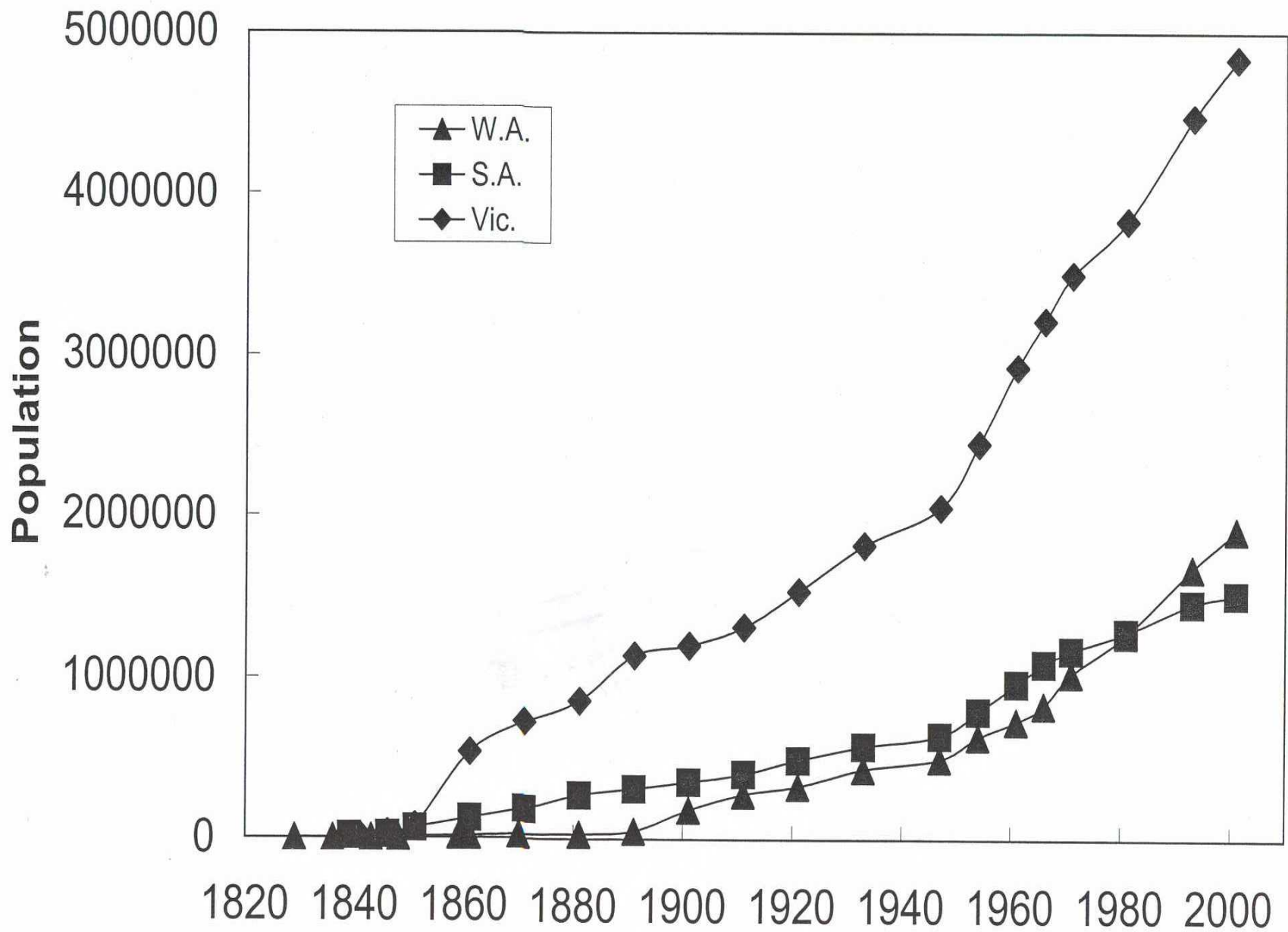


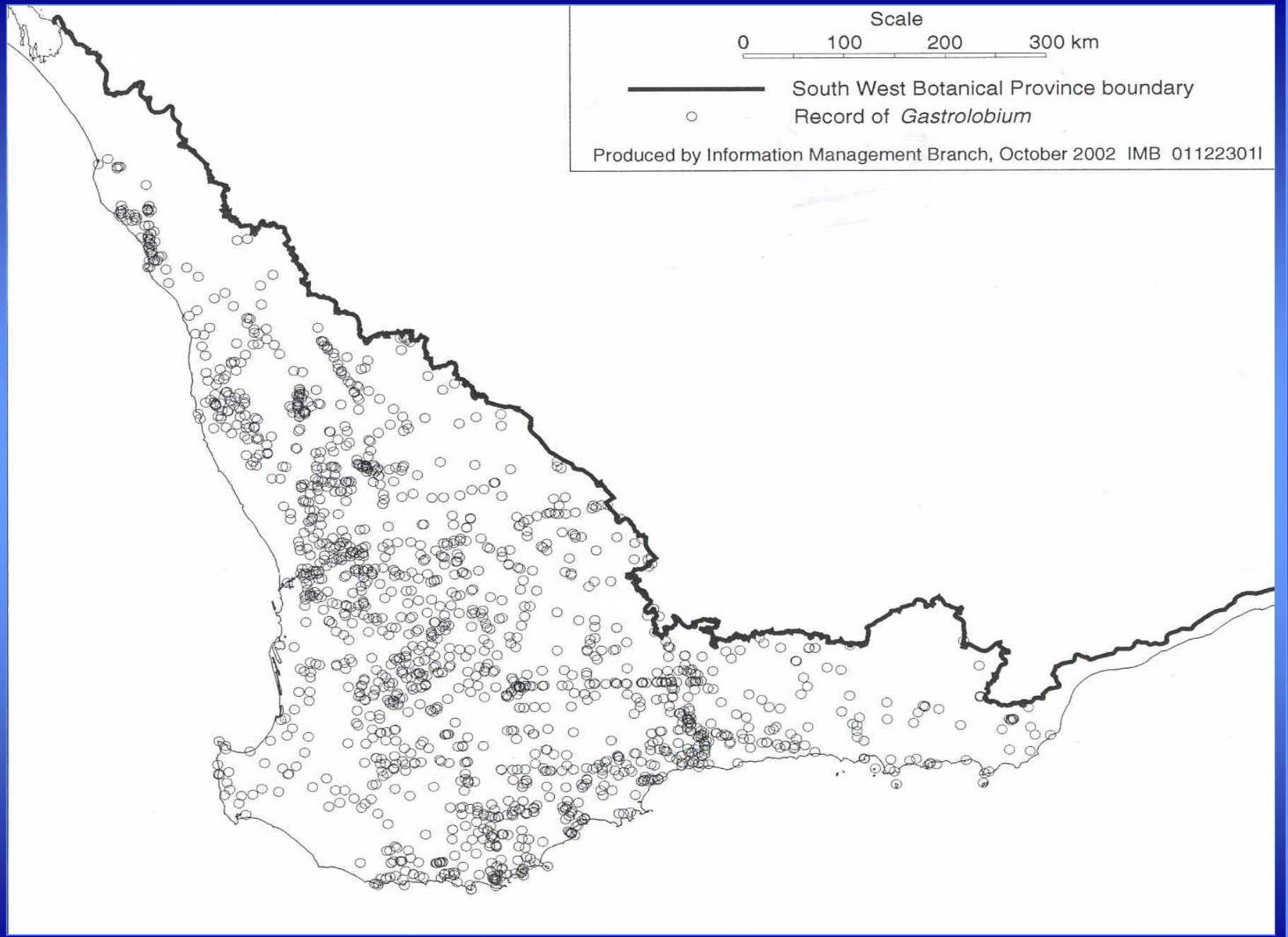
Fig 654



Period II:

1826 to 1892





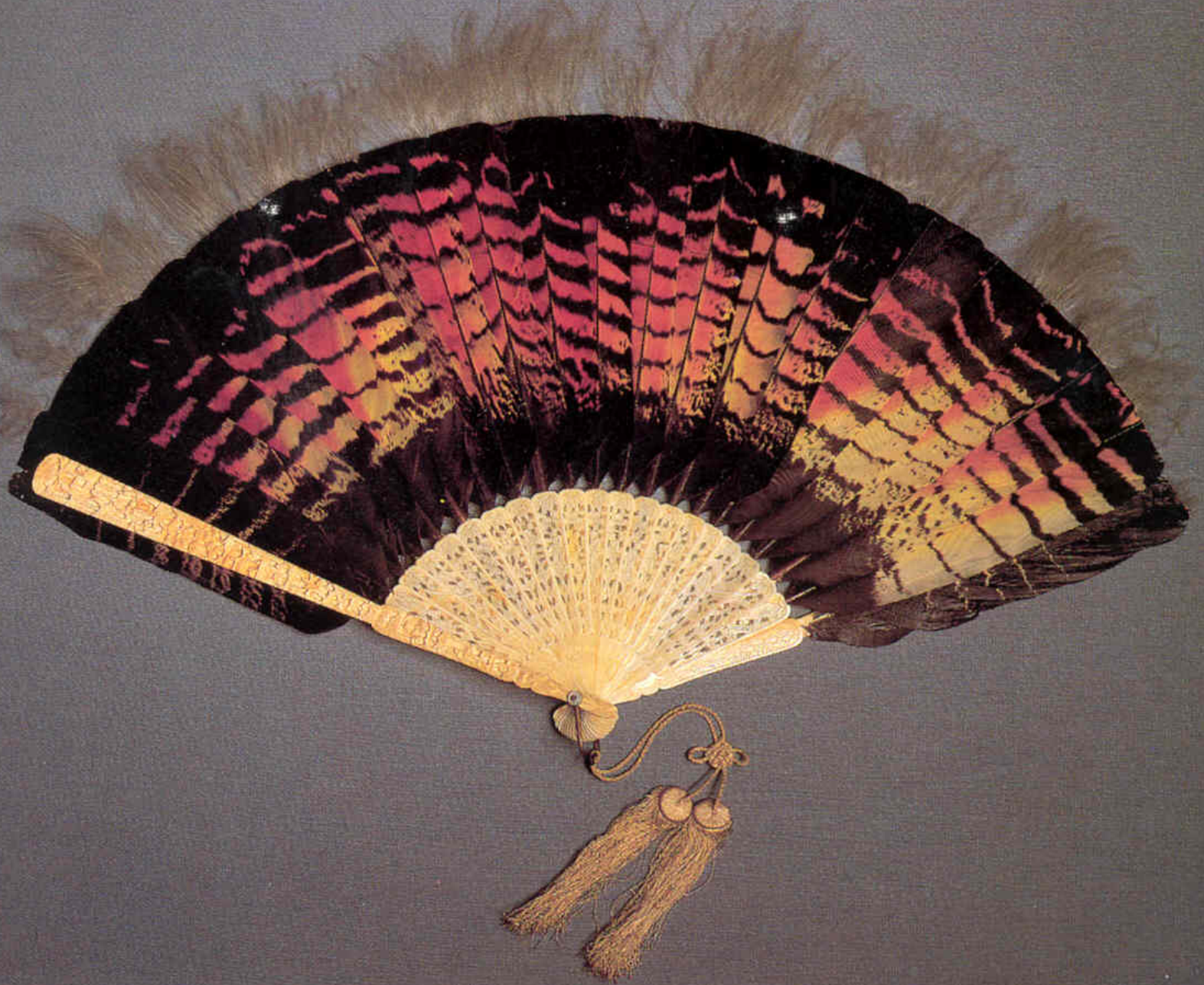












Period III:

1893 to 1914

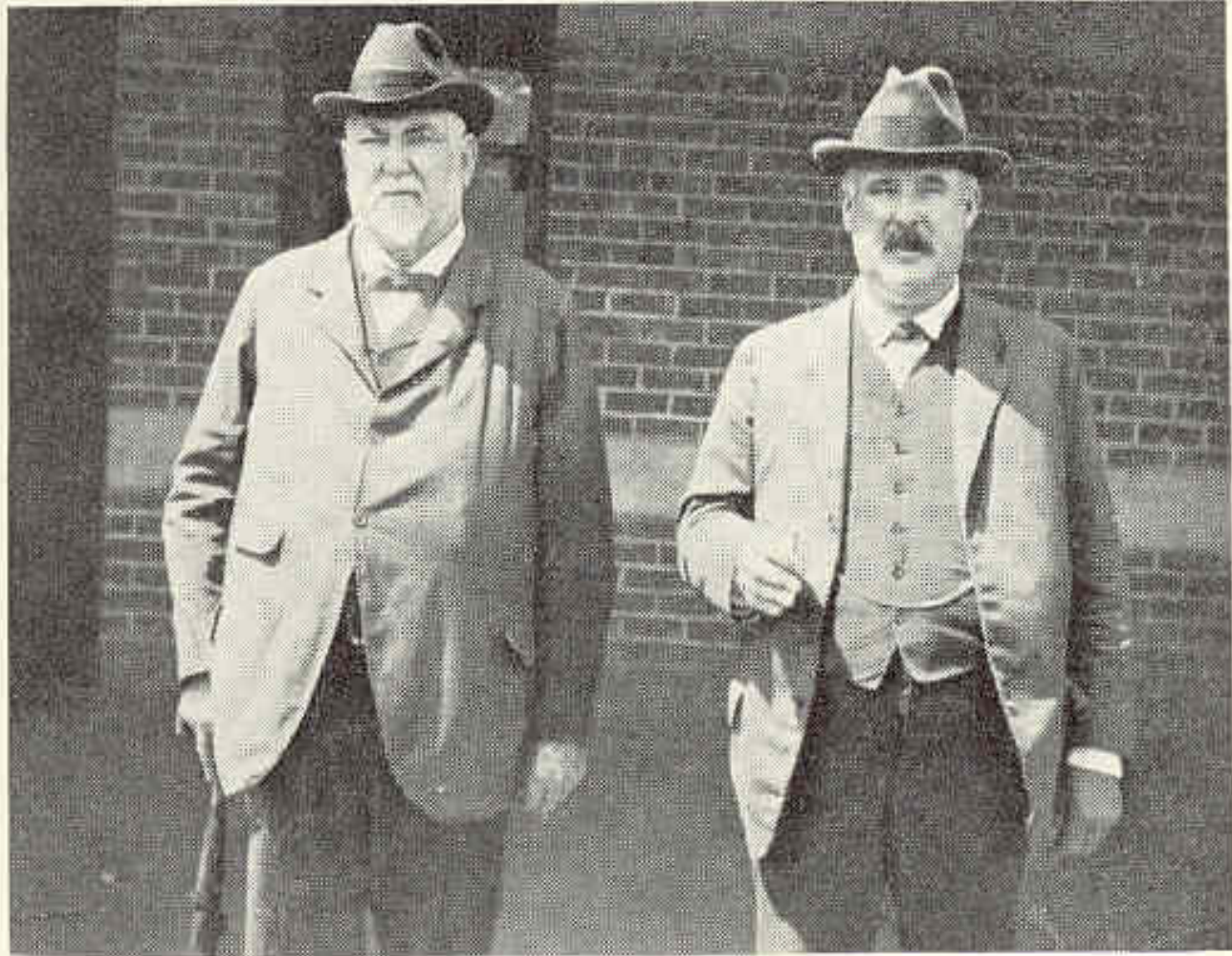








An early Collie camp after a kangaroo hunt



Sir John Forrest and James Mitchell, *c.* 1916

Western Australia Lacks Population

TO
ATTRACT SETTLERS

WESTERN AUSTRALIA
OFFERS

Land of Good Quality.
Plenty of Land for all Comers.

Financial Assistance by the
Agricultural Bank.

Loans from £25 to £2,000
Maximum.

Assisted Passages from
Great Britain
For Farmers and Farm Labourers.

Regular Rainfall Seasons.
Glorious Climate.

Practically only two Seasons—
Spring and Summer.
No long, cold, dreary winter months.



March, 1914.



Period IV:

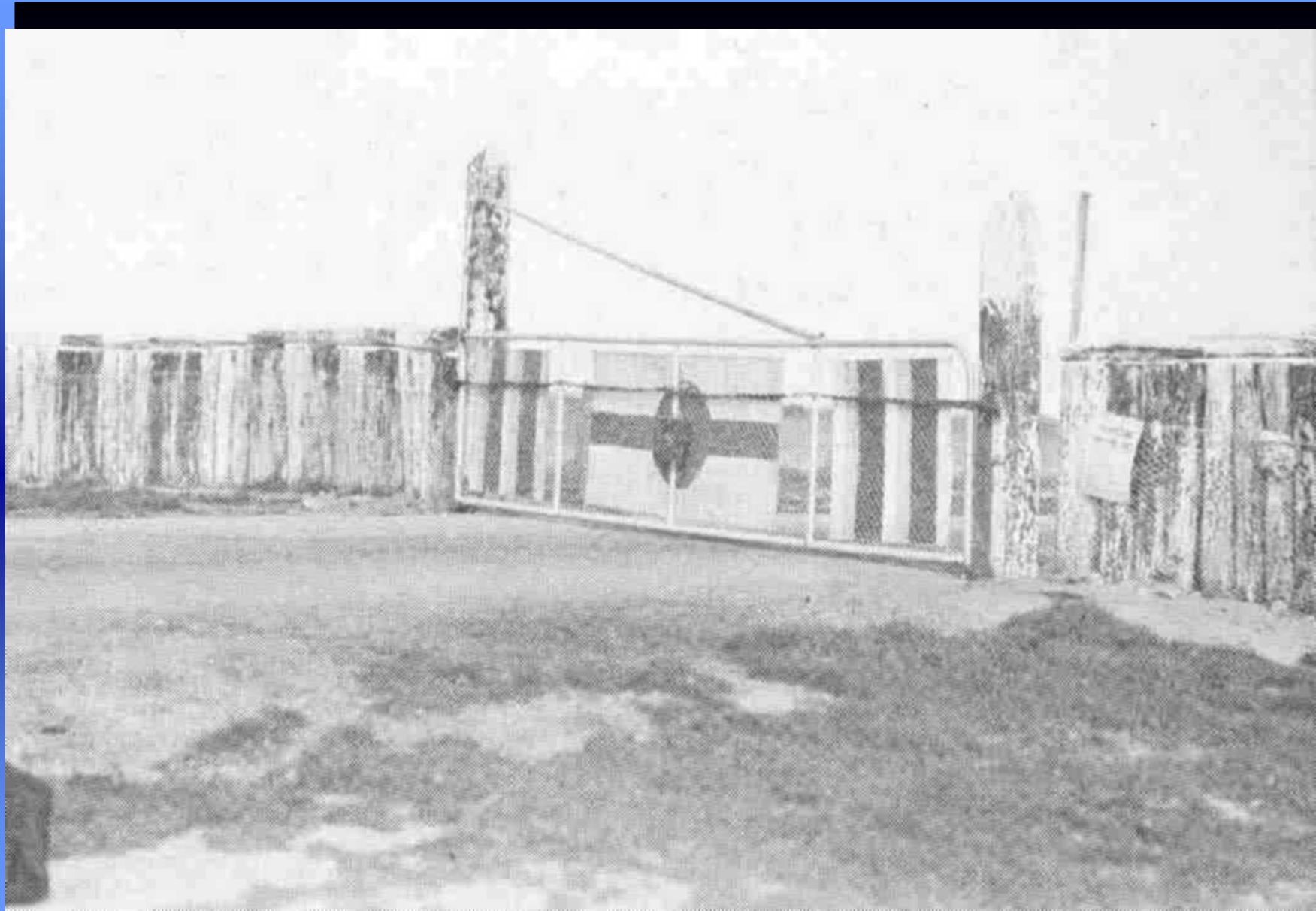
1915 to 1950



Clearing land by the "Forest Devil" on the Great Southern Railway.







Overnight...

KILL THEM WITH

GRIM



the 100% KILL
Phosphorus
RABBIT
POISON



Recommended by the
Department of Agriculture
and stocked by
all Road Boards
throughout
rural Western
Australia.

Manufactured by

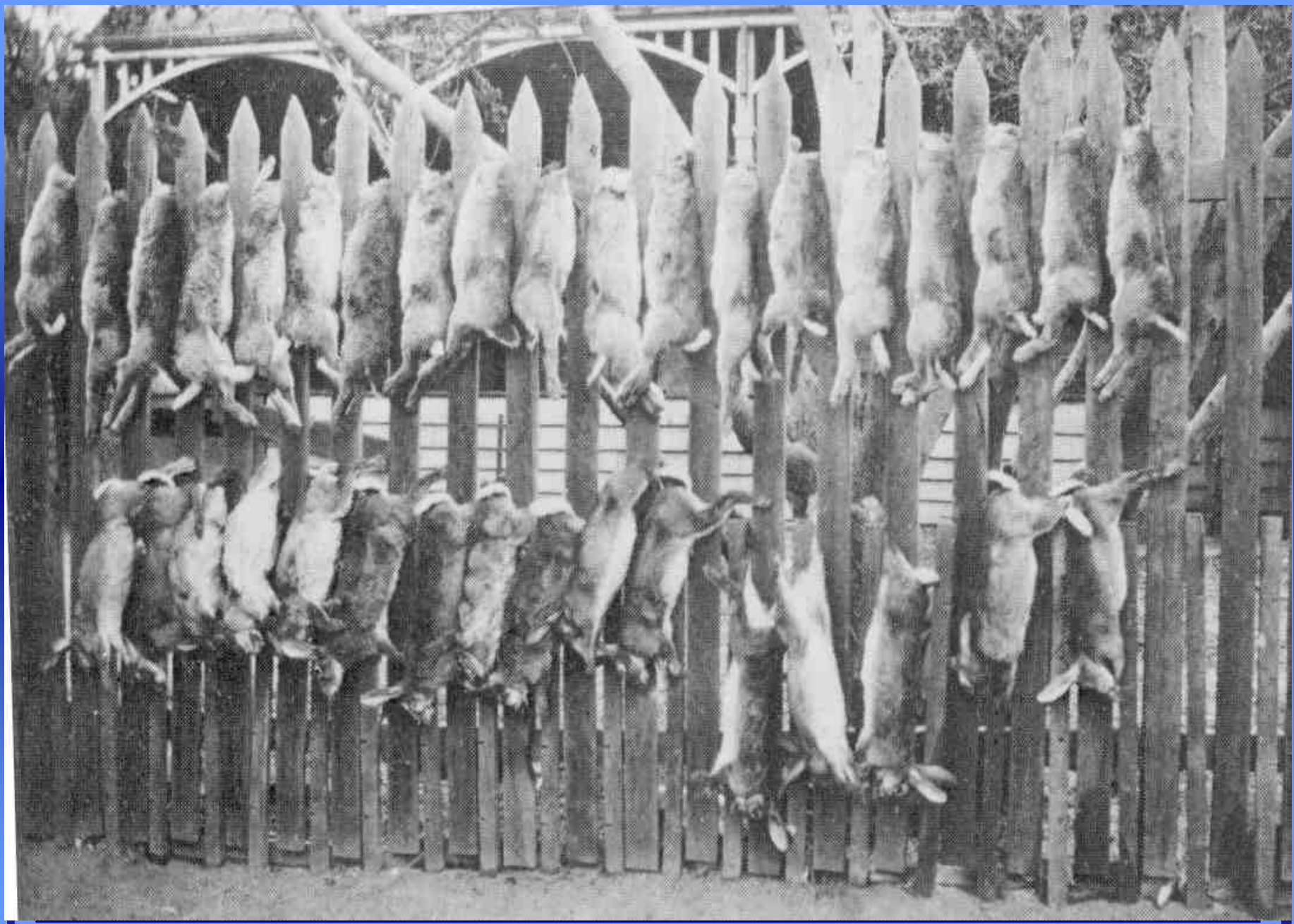


FELTON GRIMWADE & BICKFORD LTD.

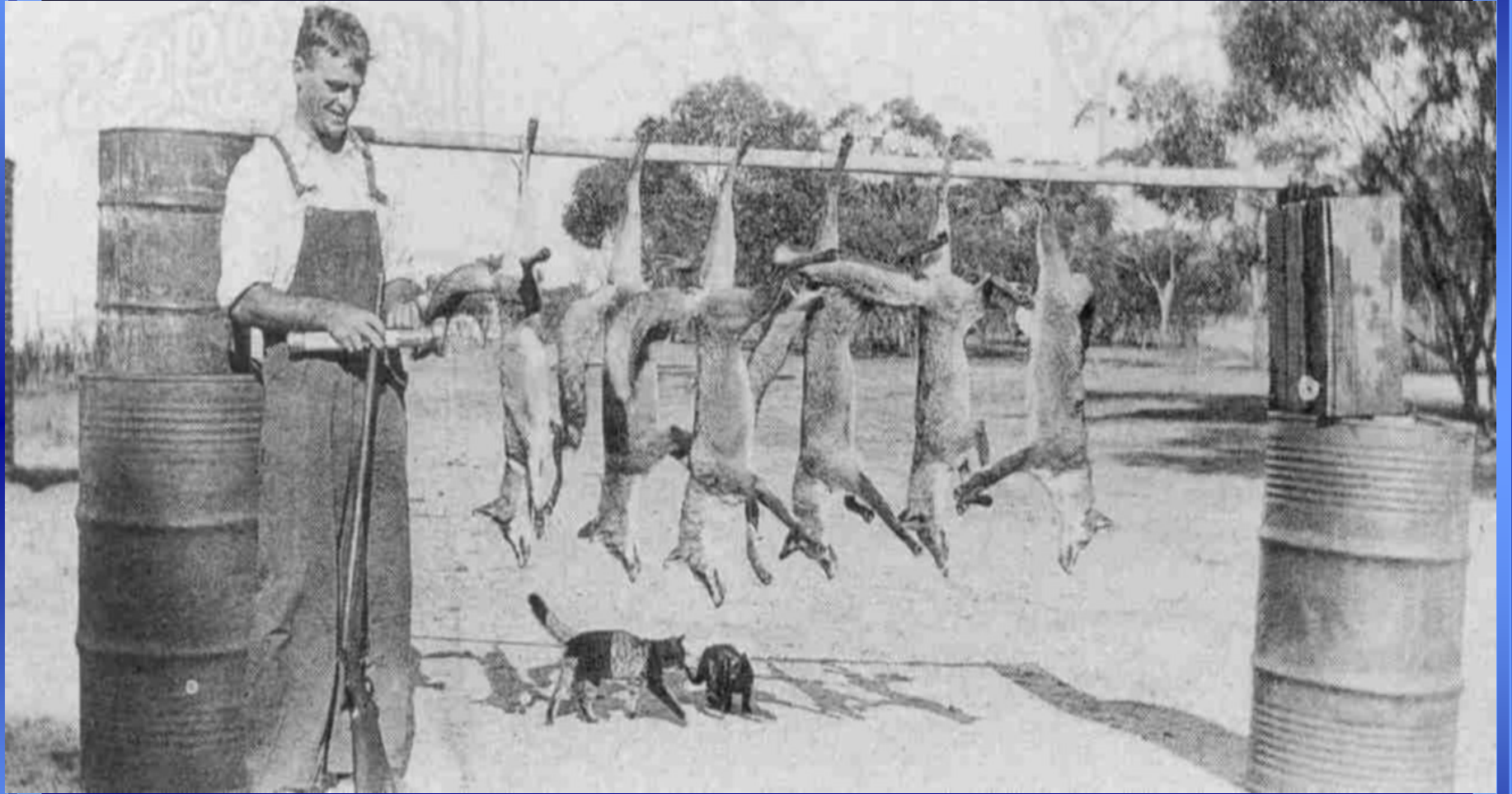
PERTH, W.A.



A cartload of poisoned rabbits (drawn by a horse named Scot) on Morning Valley, W.B. Eva's property at Nalya, in the early 1950s. The metal tyne at the rear of the cart dug a furrow into which oats poisoned with strychnine and molasses was dropped. The rampaging rabbits were free-fed oats for two nights, fed nothing on the third night—then offered the poison trail on the fourth.









Period V:

1951 to 1990





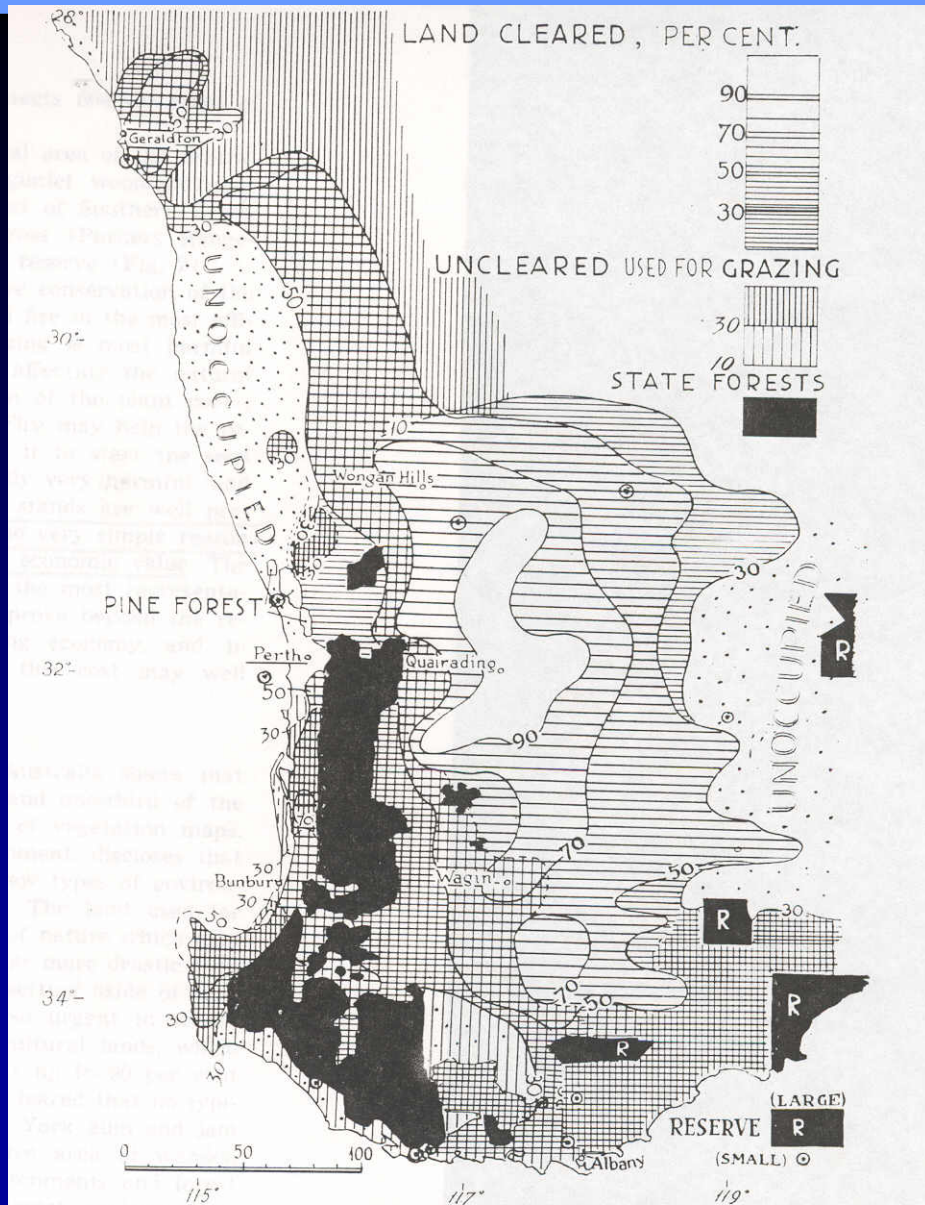
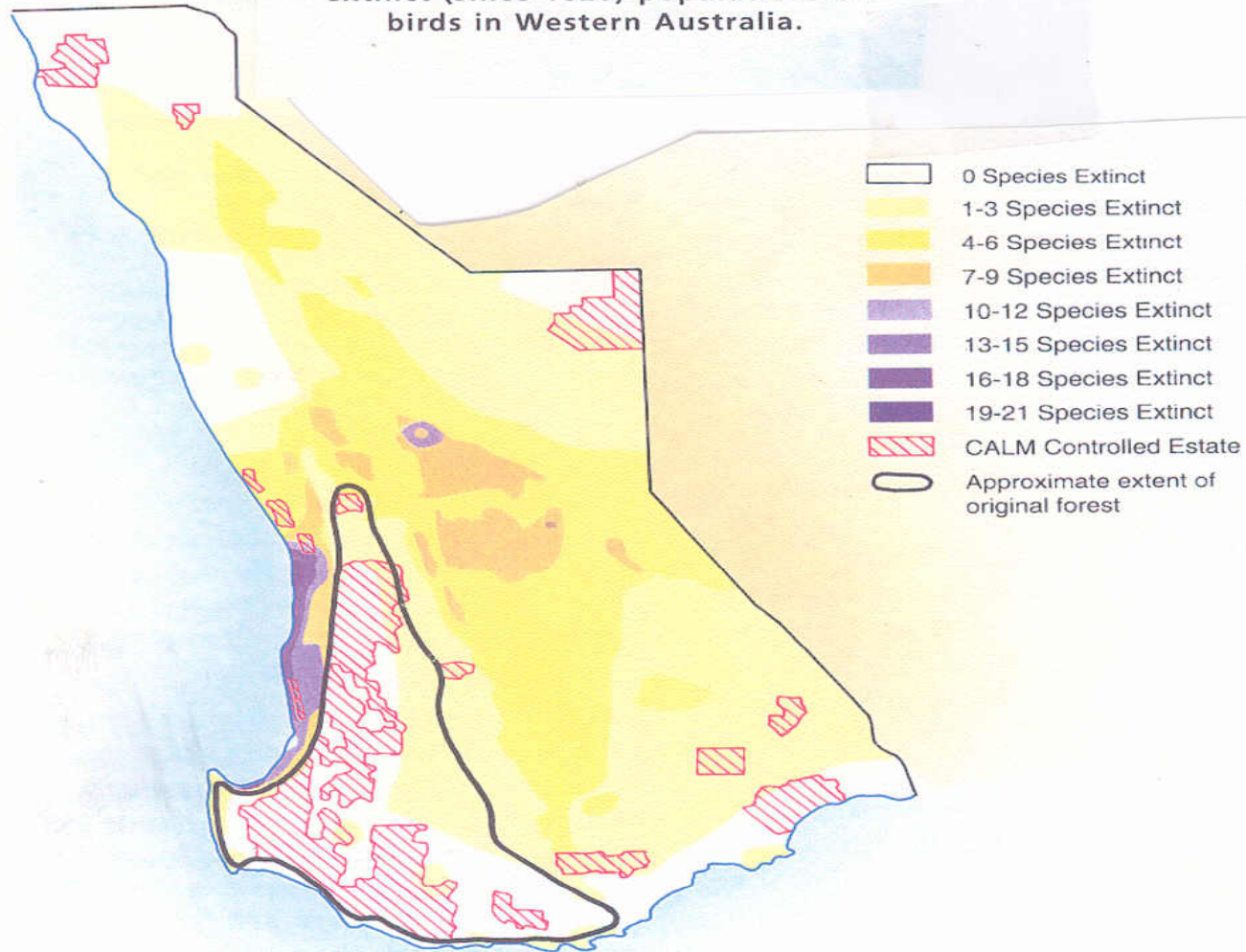


Fig. 2.—Modification of the natural environment in the agricultural areas.

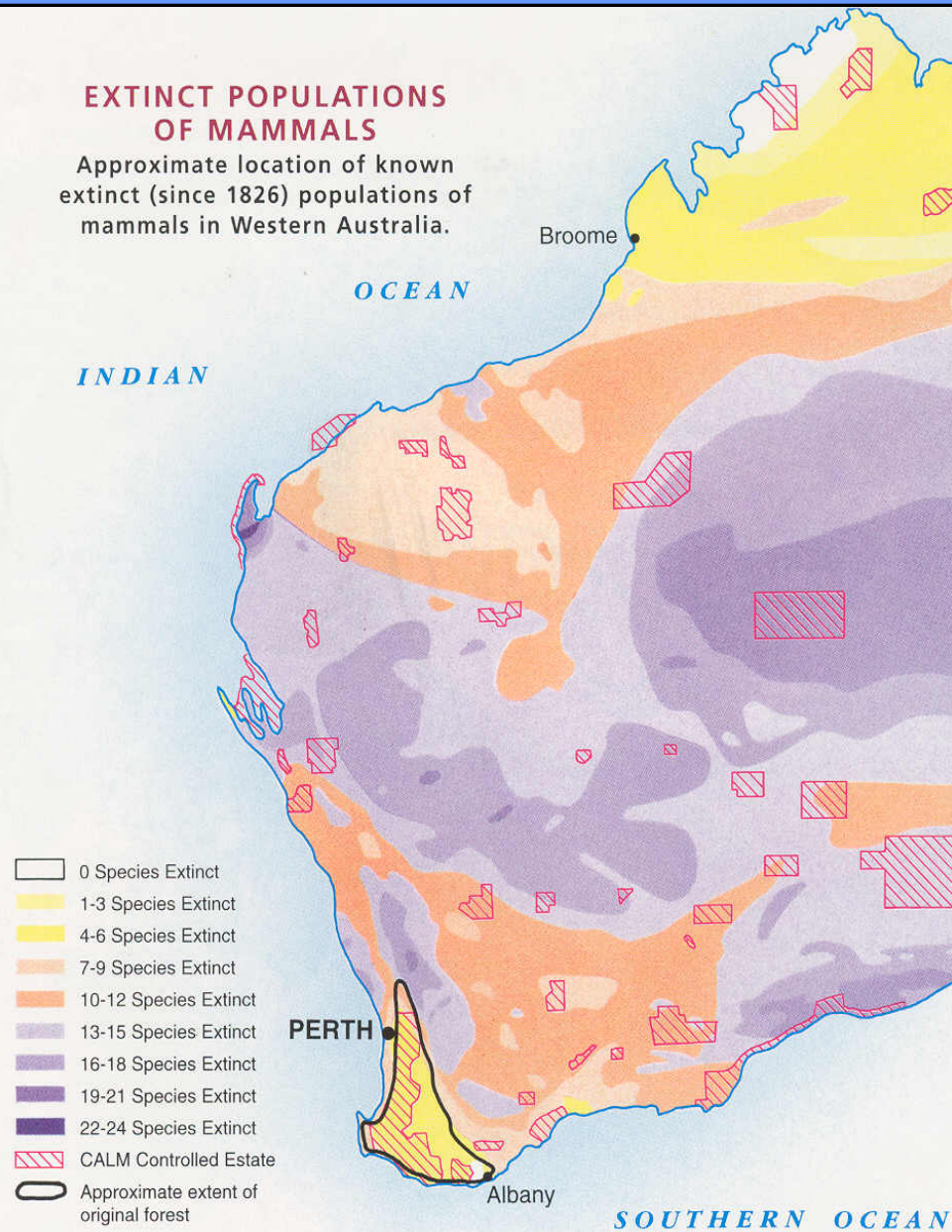
EXTINCTIONS OF BIRD POPULATIONS

Approximate location of known extinct (since 1826) populations of birds in Western Australia.



EXTINCT POPULATIONS OF MAMMALS

Approximate location of known
extinct (since 1826) populations of
mammals in Western Australia.



Period VI:

1991 to 2003

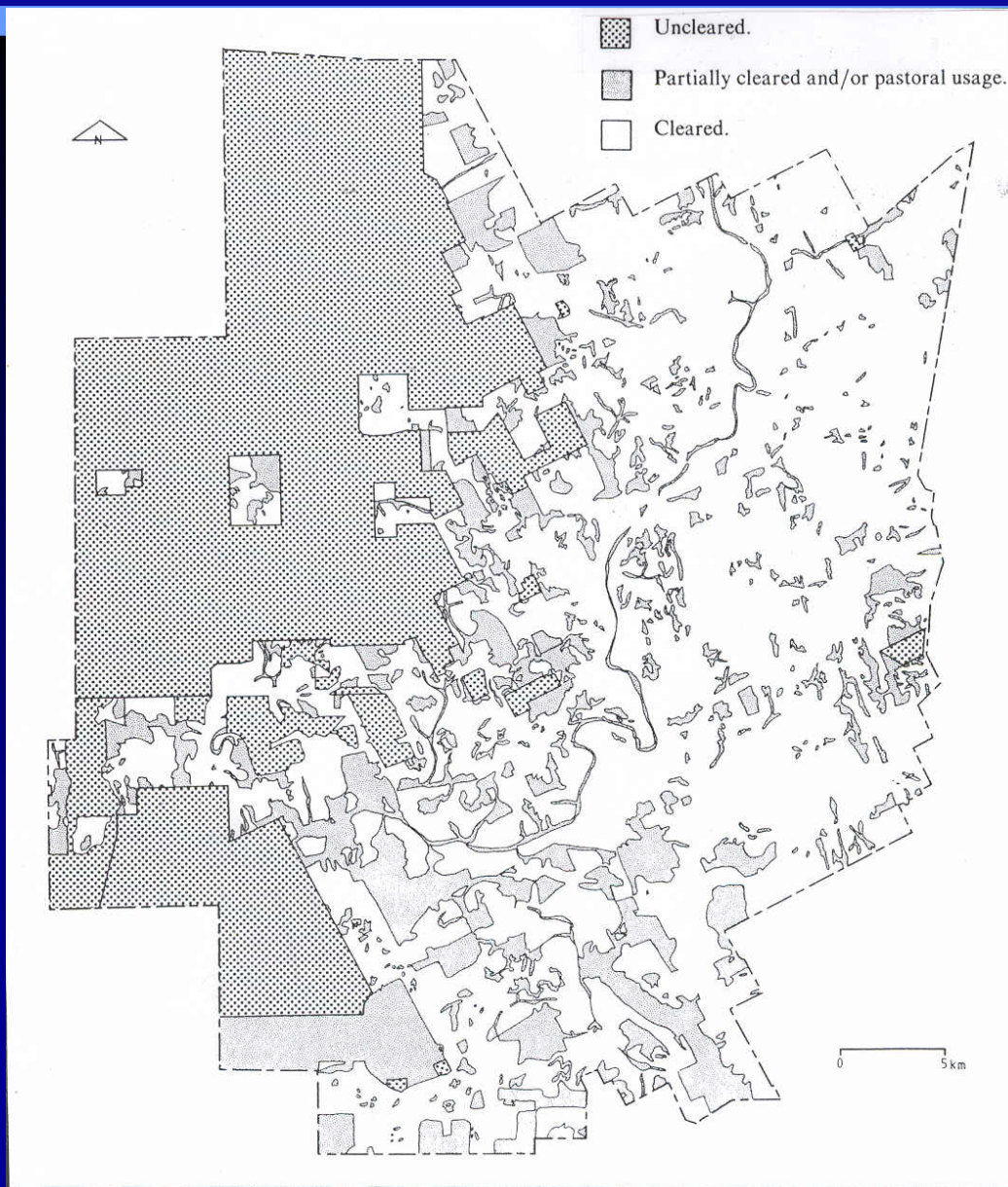
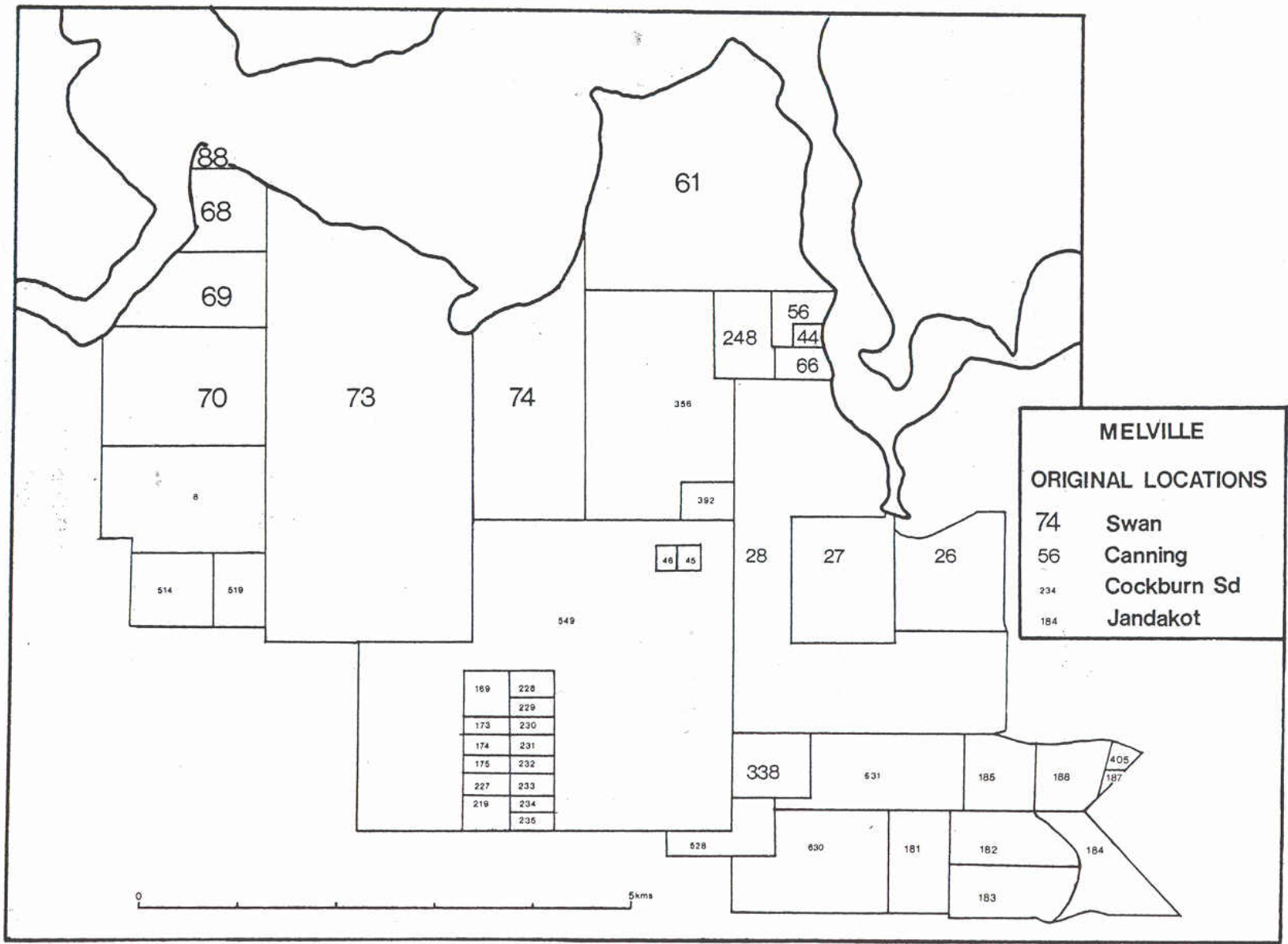


Figure 30. Pattern of land clearing in the Shire of Toodyay: 1980.



88

68

69

70

73

74

61

248

56

44

66

356

392

46

45

28

27

26

514

519

549

169

228

229

173

230

174

231

175

232

227

233

219

234

235

338

531

185

188

405

187

528

530

181

182

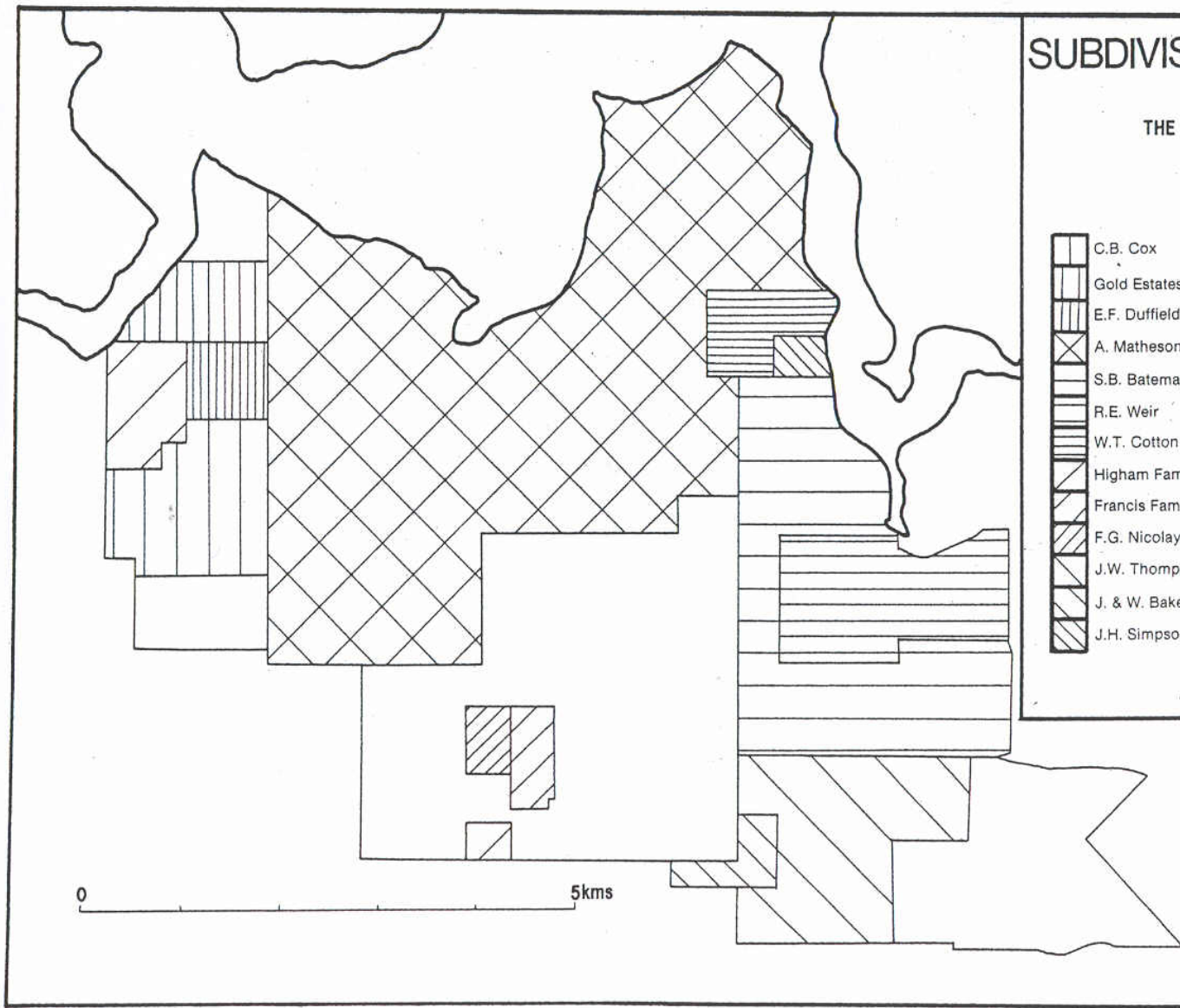
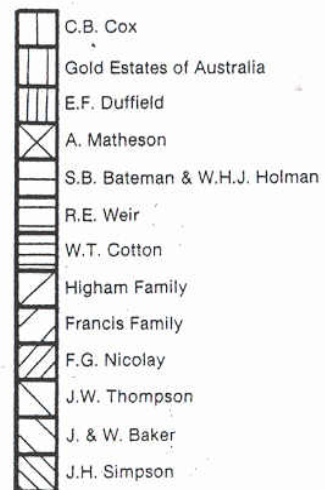
184

183







SUBDIVISION 1892-1927

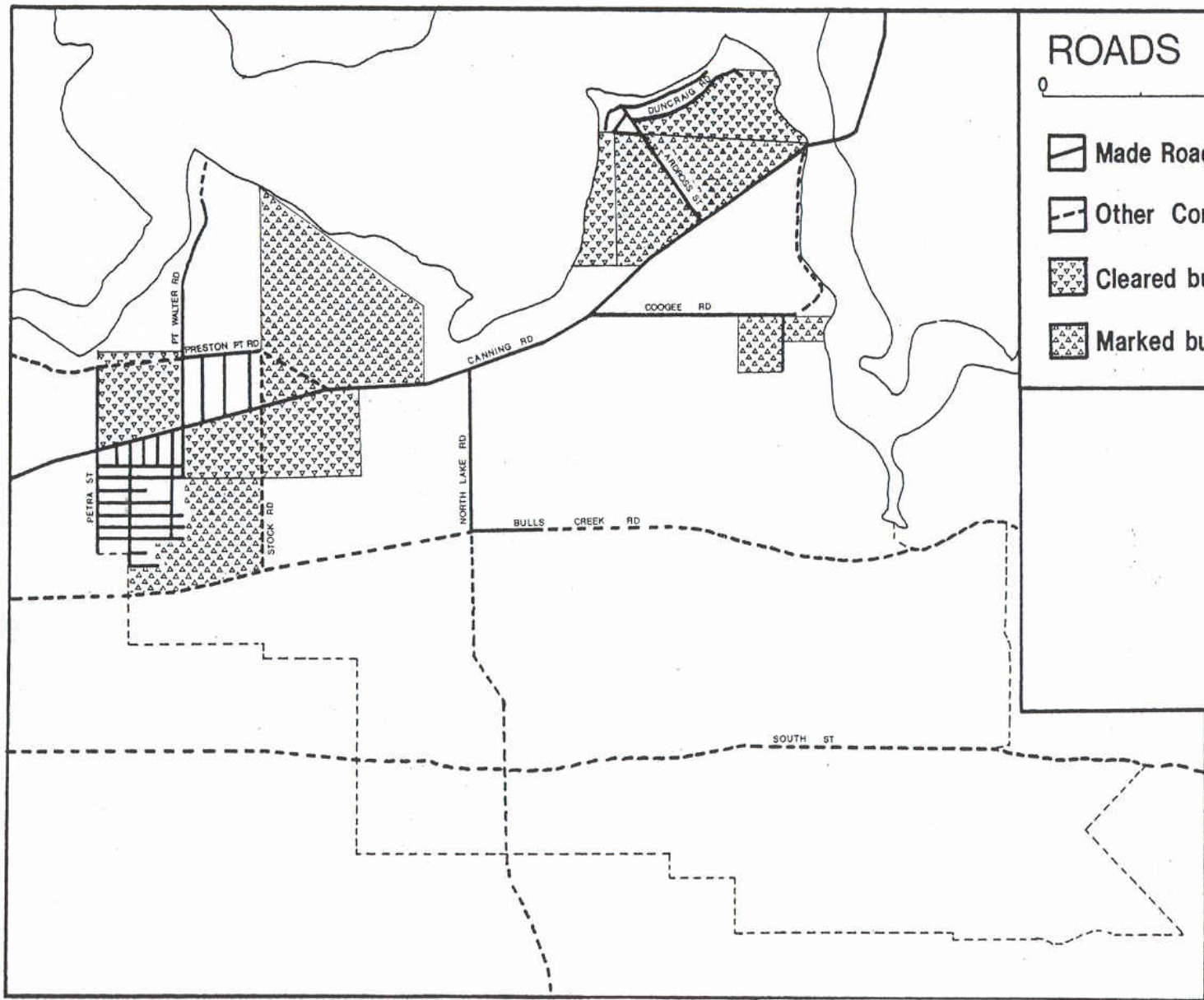
THE MAIN LANDOWNERS

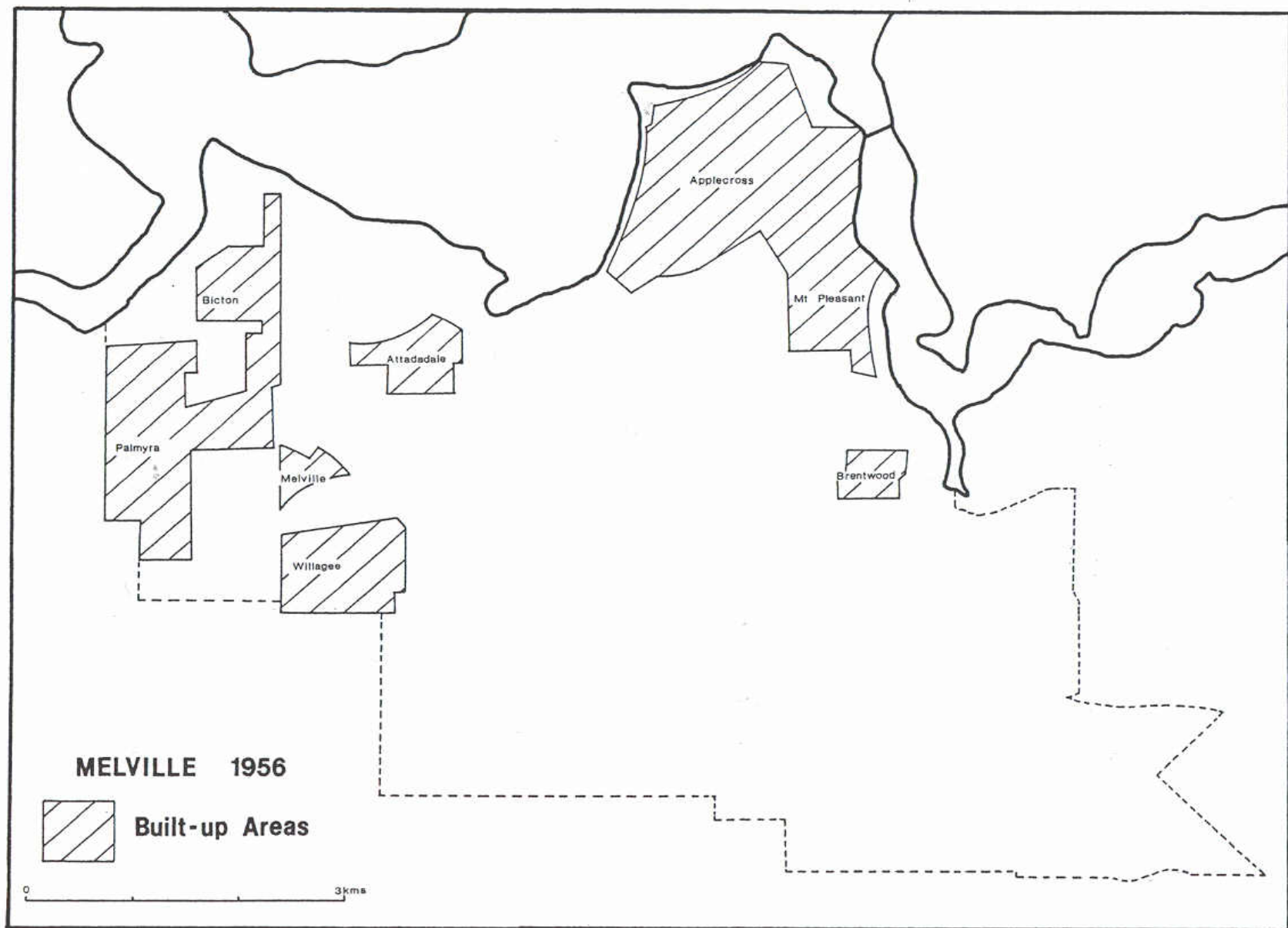


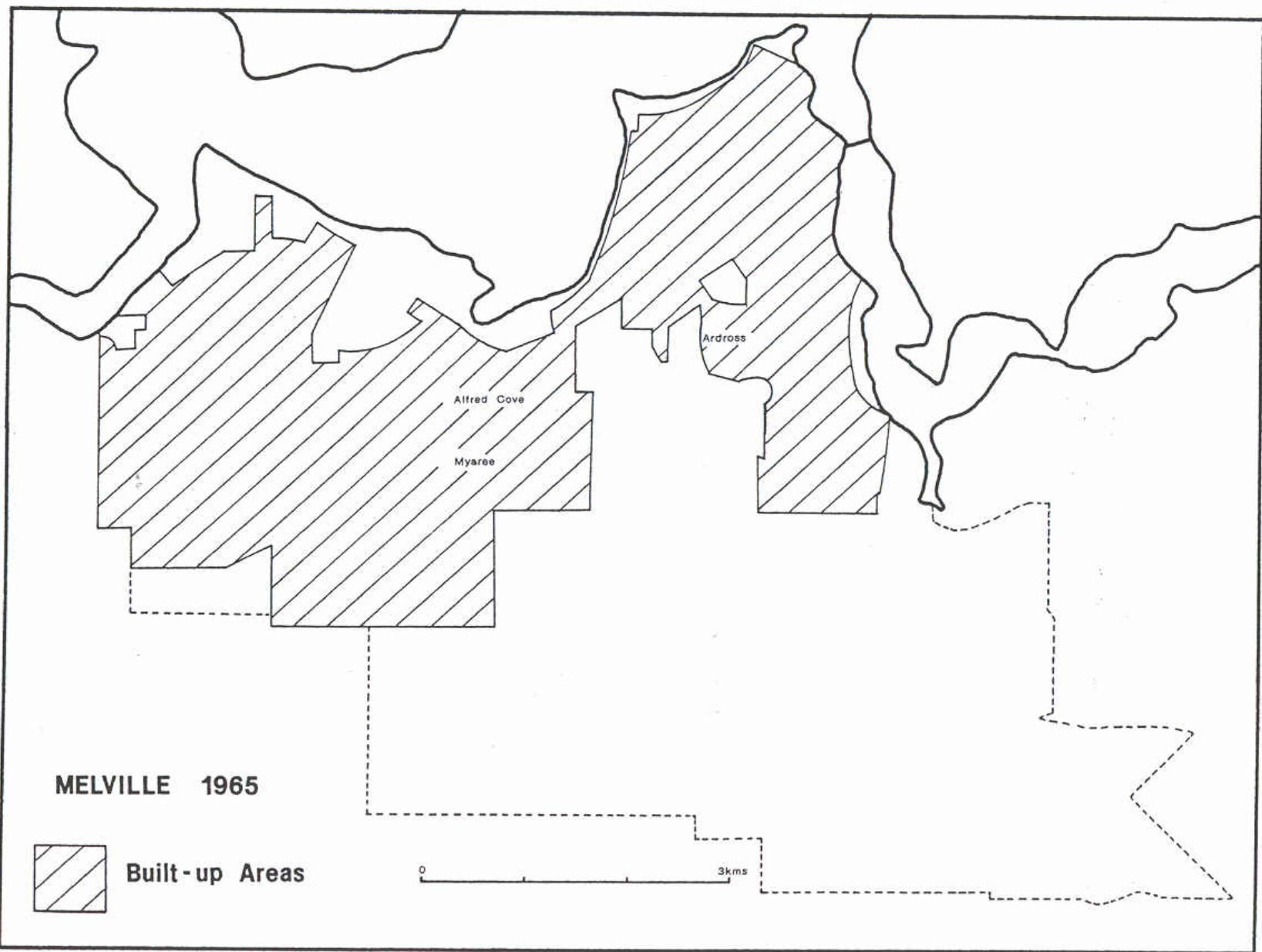
ROADS 1919

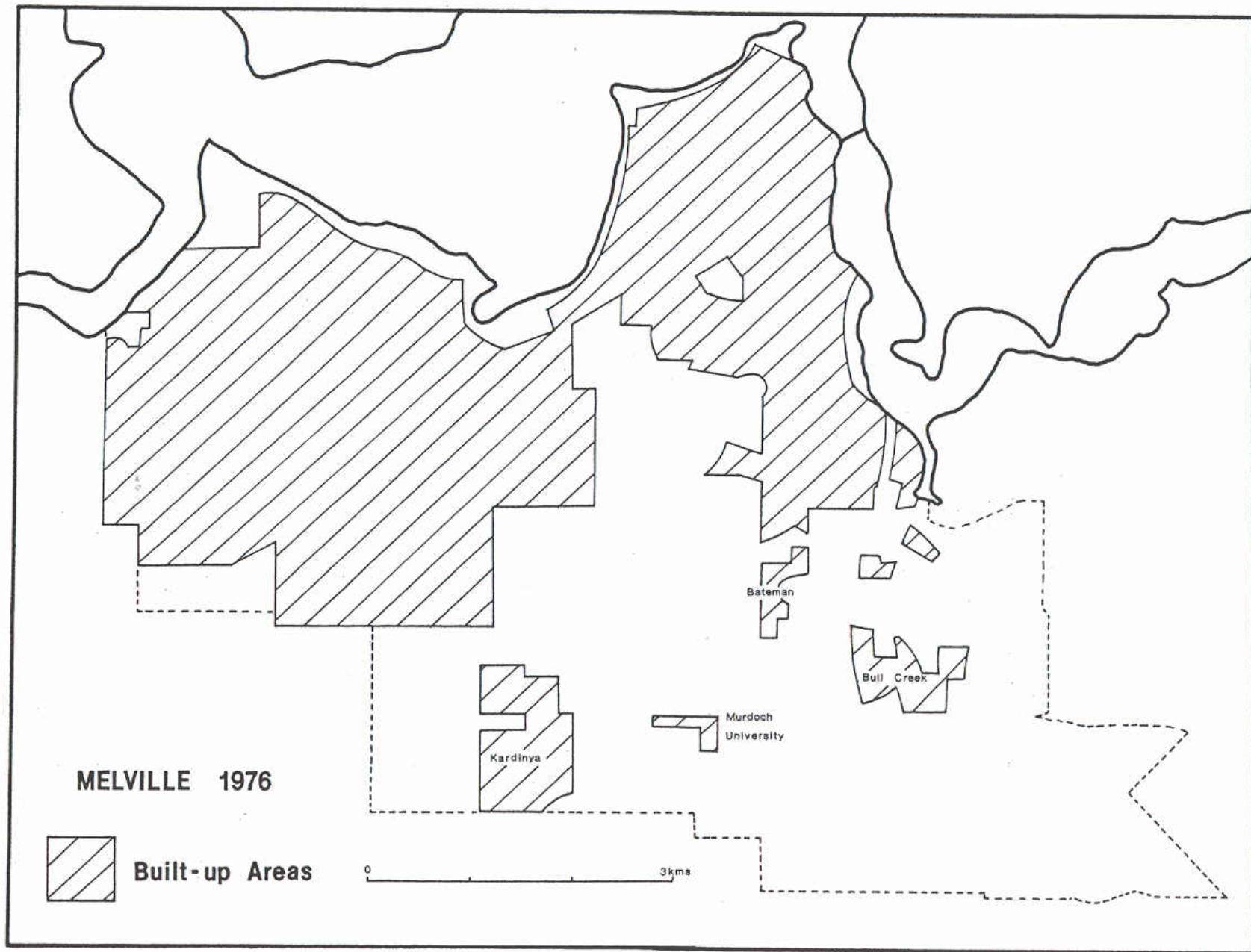
0 3kms

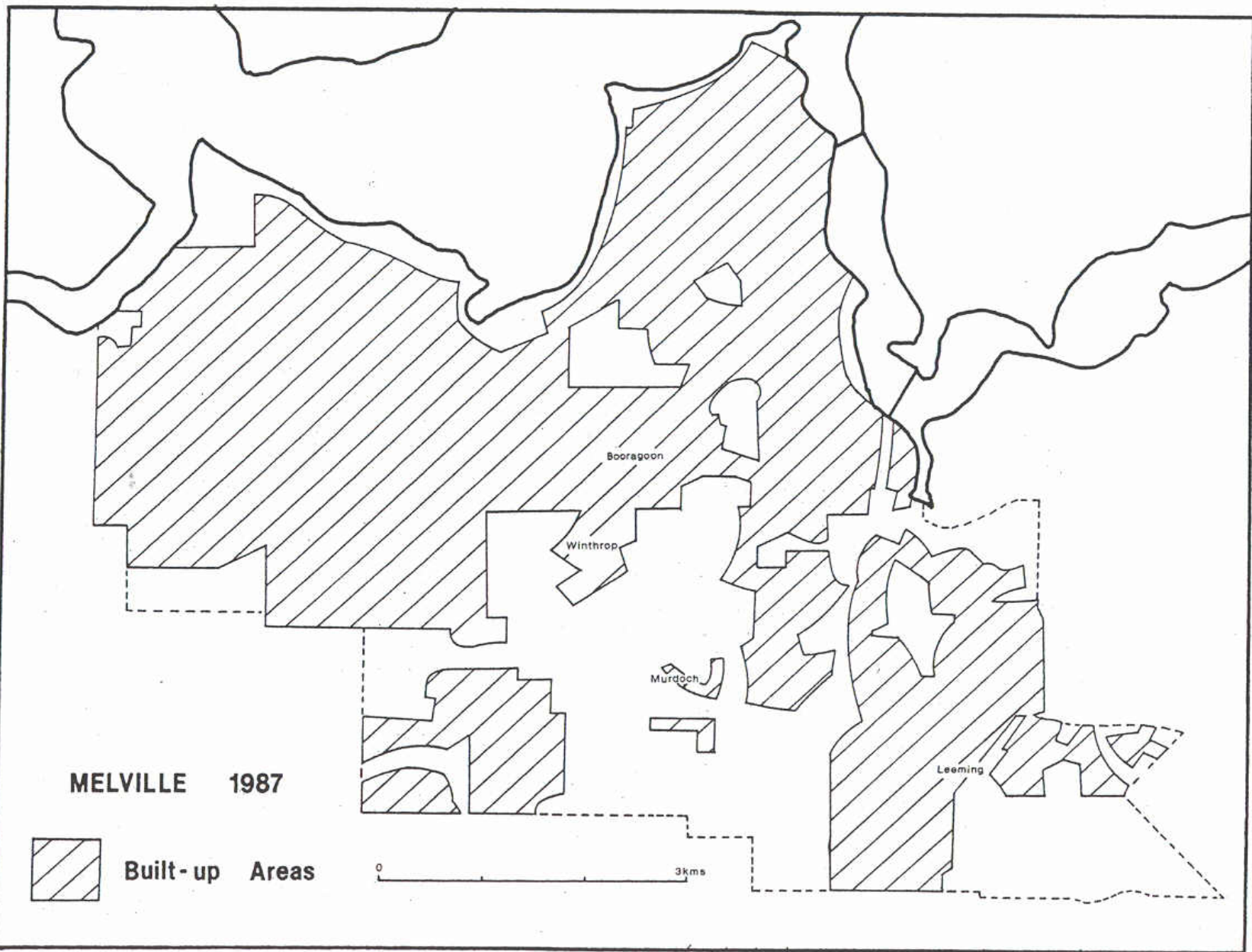
-  Made Roads
-  Other Connectors
-  Cleared but Unmade
-  Marked but Uncleared

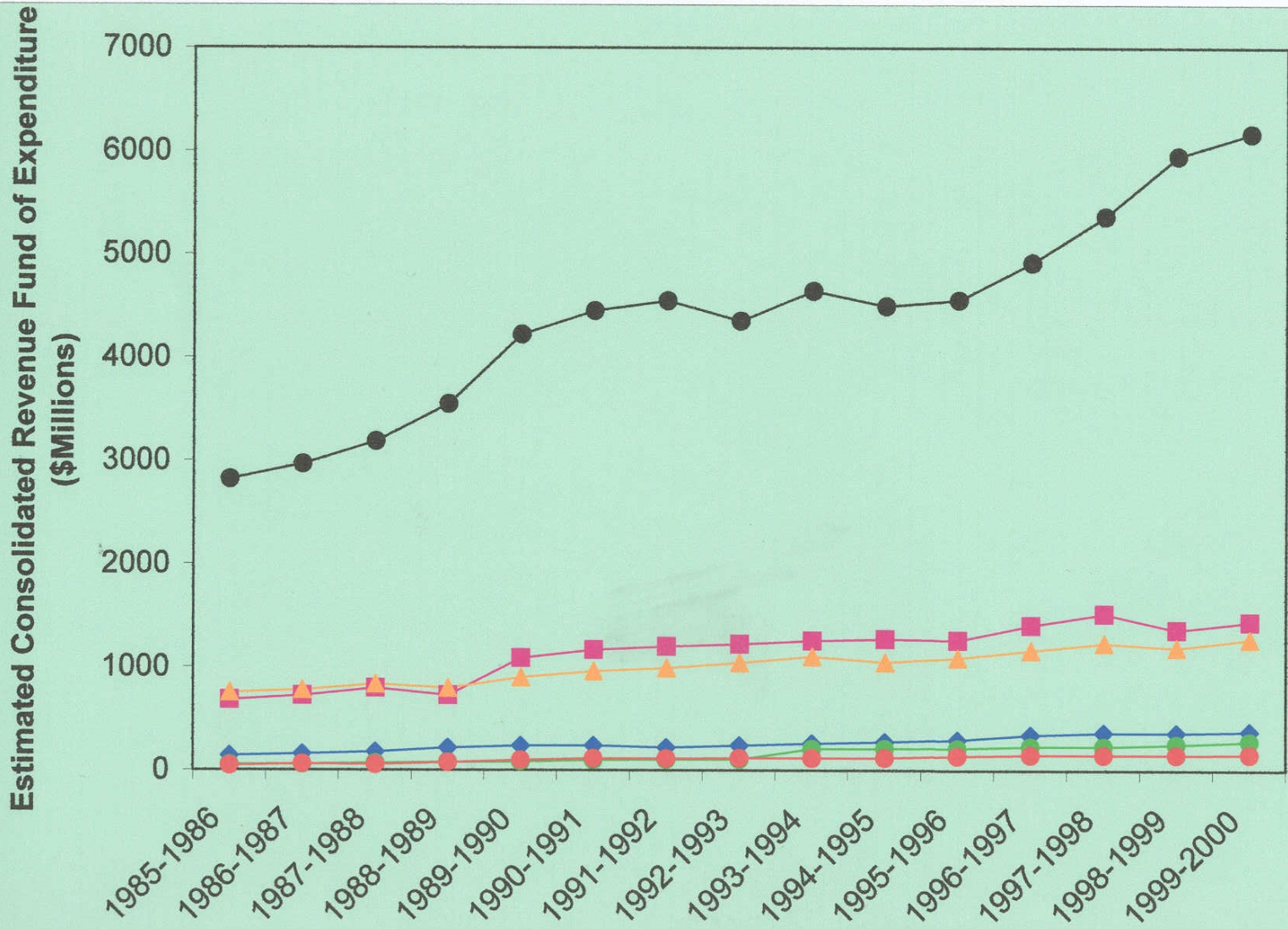












- Total CRF
- Health
- ▲ Education
- ◆ Police
- Prisons
- DCLM