

# Goongarrie Credo

Recreation Master Plan **FINAL DRAFT**



Department of Environment and Conservation  
Prepared by the Recreation and Landscape Unit and the Goldfields Region

August 2011



Department of  
**Environment and Conservation**

*Our environment, our future*



## Table of Contents

<b>1</b>	<b>INTRODUCTION .....</b>	<b>4</b>
<b>2</b>	<b>EXECUTIVE SUMMARY .....</b>	<b>5</b>
<b>3</b>	<b>BACKGROUND .....</b>	<b>11</b>
3.1	Study area .....	11
3.2	Location plan .....	11
3.3	Regional context .....	12
	Former Pastoral Station Acquisition .....	12
	Proximity to Regional centres/major towns .....	12
	Tourism network .....	12
	Mining, History and Attractions .....	13
	Great Western Woodlands .....	13
	Aboriginal History and Joint Management .....	14
3.4	Recreation planning history .....	14
	Documents to date .....	14
	Document review/comments .....	15
	Work to date .....	15
	Need for integrated planning .....	15
3.5	Statement of management philosophy .....	16
3.6	Management goals .....	16
3.7	Consultation/community stakeholders .....	17
<b>4</b>	<b>MASTER PLAN AIMS .....</b>	<b>19</b>
4.1	Vision statement .....	19
4.2	Aims/Objectives .....	19
4.3	Desired outcomes .....	19
<b>5</b>	<b>SITE ANALYSIS .....</b>	<b>21</b>
5.1	General biophysical factors and landscape character for Goldfields Region .....	21
5.2	Site analysis detail for Goongarrie and Credo .....	22
	Goongarrie .....	22
<b>6</b>	<b>VISITOR ANALYSIS .....</b>	<b>25</b>
6.1	General visitation factors for the Goldfields Region .....	25
	Goldfields Visitor Experience .....	25
	Changing trends .....	25
	Predicted Visitation Increase .....	25
	Visitor Type .....	26
	Methods of Travel and Demographic .....	27
	Catering for Future Visitors .....	27

<b>7</b>	<b>ISSUES .....</b>	<b>28</b>
<b>8</b>	<b>OPPORTUNITIES AND CONSTRAINTS .....</b>	<b>29</b>
<b>8.1</b>	<b>Opportunities .....</b>	<b>29</b>
	Goongarrie .....	29
	Credo .....	29
	Link between Goongarrie and Credo.....	29
	Links to DEC managed recreation sites: .....	30
	Links to the Great Western Woodlands strategy.....	30
<b>8.2</b>	<b>Constraints.....</b>	<b>30</b>
<b>9</b>	<b>RECOMMENDATIONS .....</b>	<b>31</b>
<b>9.1</b>	<b>Recreation Zones.....</b>	<b>31</b>
<b>9.2</b>	<b>Directions for Zones.....</b>	<b>31</b>
	Zone A: Homestead Precinct .....	31
	Zone B: Half day trip – Recreation sites and short drive circuit.....	33
	Zone C: Full day trip - 4WD circuit.....	35
<b>9.3</b>	<b>Activities and Facilities .....</b>	<b>36</b>
	Vehicular access .....	36
	Camping facilities.....	37
	Camp fires .....	38
	Campground Host accommodation .....	38
	Caretaker accommodation .....	38
	Field Study Centre.....	39
	Homestead precinct facilities and maintenance.....	39
	Day use areas .....	39
	Small structures .....	40
	Walk trails.....	40
	Cycle tracks .....	41
	Visitor Risk Management.....	41
	Management of Cultural Heritage (historic structures/relics) .....	41
	Information and Interpretation.....	42
<b>10</b>	<b>IMPLEMENTATION.....</b>	<b>43</b>
<b>10.1</b>	<b>Research and further information gathering.....</b>	<b>43</b>
<b>10.2</b>	<b>Further consultation required .....</b>	<b>43</b>
<b>10.3</b>	<b>Project staging and priorities .....</b>	<b>43</b>
<b>10.4</b>	<b>Co-ordination .....</b>	<b>47</b>
<b>10.5</b>	<b>Funding resourcing .....</b>	<b>47</b>
	<b>APPENDICES .....</b>	<b>48</b>
	<b>APPENDIX A: Extent of Conservation Reserves as at October 1992 .....</b>	<b>48</b>
	<b>APPENDIX B: Promotion of Former Pastoral Station Facilities .....</b>	<b>49</b>
	<b>APPENDIX C: Rowles Lagoon Conservation Park - Master Plan .....</b>	<b>50</b>

## **MAPS AND PLANS**

<b>Drawing 1</b>	<b>Contextual Plan: Goldfields Reserves and Trail Network near Kalgoorlie</b>
<b>Drawing 2</b>	<b>Recreation Zones</b>
<b>Drawing 3</b>	<b>Analysis, Opportunities and Constraints - Goongarrie</b>
<b>Drawing 4</b>	<b>Analysis, Opportunities and Constraints - Credo</b>
<b>Drawing 5</b>	<b>Goongarrie Homestead Precinct</b>
<b>Drawing 6</b>	<b>Credo Homestead Precinct</b>

## **1 INTRODUCTION**

This document provides a review of recreation at Goongarrie and Credo former pastoral stations and was initiated by the Goldfields Region to give focus and guidance on existing and future recreation developments and opportunities.

An extensive site visit and review of Goongarrie and Credo infrastructure, visitor services and opportunities was conducted in November 2009 by Department of Environment and Conservation (DEC) Goldfields A/Regional PVS Leader and staff from the Recreation and Landscape Unit in DEC Kensington.

The purpose of this Recreation Master Plan is to provide a conceptual framework for development of recreational activities and opportunities throughout Goongarrie and Credo in accordance with DEC's management goals and priorities.

The Recreation Master Plan will aim to -

- Assess current recreation and tourism facilities and services, identify opportunities and constraints.
- Identify management goals and priorities and assist with determining appropriate management strategies to conserve landscape values and cultural heritage.
- Provide a planning framework to strategically guide future recreation redevelopment work and facilitate discussions with stakeholder groups.
- Establish priorities for capital works and the required actions to complete them.

## 2 EXECUTIVE SUMMARY

Key issues apparent at Goongarrie and Credo, along with proposed key actions, are outlined in the following.

### Goldfields Region Strategic Visitor Services Plan

A Visitor Services Plan is required to direct and foster a cohesive approach to planning recreation, communications and tourism services in the Goldfields Region, addressing many issues raised in this report.

- Develop a Goldfields Region Visitor Services Plan.

### Predicted Visitation Increase

Pressure on DEC managed estate (and other Regional infrastructure) is likely to increase. This is due to an expected increase in visitor numbers influenced by regional promotion and marketing, road improvements, nature-based tourism, outback tourism and self-drive touring promotion. An understanding of visitation levels and site capacity is required for planning future site development and assessing the potential for commercial licences.

- Expand the social research and RECDATA program to better understand future growth in the area and possible changes in visitor access and demographics. Improve frequency and reliability of data collected.

### Change in Methods of Travel & Demographics

A large proportion of visitors still travel in small groups on self-contained 4WD outback trips/tours. However, the advent of key sealed roads in the Region has seen a noticeable increase in caravans and larger vehicles accompanied by a shift in visitor demographic. Short term/express visits to key sites are becoming more common for tourists from regional centres. Commercial coach tours may increase as road improvements continue.

Improved GPS technology and mapping software gives visitors the means to venture off-road in remote landscapes. It is likely that an increased proportion of visitors will undertake these activities and some may not be properly prepared or may be overly reliant on technology.

Because of increased accessibility to the Region, visitors of varying abilities can now access remote sites with rugged and difficult terrain, in extreme climates. Some visitors place themselves and others at risk in order to experience these landscapes. This broader spectrum of visitors creates the need for improved comfort, convenience, access, facilities, range of experiences and safety.

- Ensure future site planning and design caters for an increase in visitor numbers, a change in method of travel and the abilities of visitors whilst still providing characteristically Goldfields recreation opportunities.

### Consistent Quality and Cohesion in Site Presentation

The quality of sites varies across the Region from newly constructed and redeveloped sites to ones in need of upgrades and improvements. The quality of presentation impacts on visitor perception and experience and 'sets the tone' for a site which may ultimately influence visitor behaviour. A consistently high level of site responsive design, sympathetic to the individual character of the site, is desired across the Region.

- Provide and maintain recreation areas, facilities and services to a consistently high standard and ensure compliance with set standards.
- Ensure development is sympathetic to the individual character of the site to prevent loss of outback/historic appeal.

- Develop a consistent language for recreation site planning and design that visitors understand and recognise. Implement a consistent style of management, orientation and interpretation signs in accordance with DEC standards.
- Develop an appropriate range of materials and construction details for consistent use at sites.

#### 4WD/Outback Culture

Wide open spaces, sparse vegetation, hard ground, GPS technology and a lack of management presence generally gives 4WD users unrestricted access to the Goldfields landscape. Visitors enjoy the freedom and the opportunity to drive right up to an attraction or camp almost anywhere.

With increasing visitor numbers, undefined vehicle movement and uncontrolled visitor access is now causing noticeable environmental degradation. At recreation sites, a lack of definition to parking areas and camp sites is causing damage to vegetation and soil compaction. Beyond developed sites, management of vehicles and uncontrolled camping and prospecting activity is a challenge for Regional Staff operating in a vast area with limited resources. These issues need to be addressed for environmental protection and visitor safety.

- Develop strategies/measures for managing vehicles in an open landscape and address through site planning and design where possible at recreation sites.
- Increase management presence at recreation sites and appoint campground hosts to assist at busy sites.
- Consider management strategies to address uncontrolled camping and prospecting activities occurring on DEC managed estate outside designated recreation sites. Increase staff monitoring and reporting of activities. Where pressure points occur, consider providing campground facilities at the location in question or at a suitable site nearby.
- Undertake community education to improve understanding and appreciation of the natural environment and develop partnerships with community groups (e.g. Amalgamated Prospectors and Leaseholders Association (APLA), natural resource management and 4WD clubs) to assist with management and protection.

#### Consistent Quality and Cohesion in Site Management

The remote nature of the Goldfields and the extreme climate coupled with the dynamic seasonality ensures a difficult and challenging work environment. Site management varies between sites and where possible should be standardised across the Region.

- Appoint volunteer campground hosts at busy recreation sites such as the homesteads to assist with site management by providing information, managing visitors, increasing security, managing/reporting visitor risks, undertaking maintenance and collecting camping fees and visitor feedback. Provide effective training and management of hosts to ensure consistent quality of service.
- Use site design and signage, in accordance with DEC standards, to assist with site management.
- Review and determine the best campground booking system to better manage groups and campers.
- Engage volunteer/community/stakeholder groups to assist with maintenance and monitoring of remote sites and tracks.

#### Homestead Precinct Facilities and Maintenance

Ageing homestead buildings require constant care and maintenance and are demanding of limited staff and financial resources. Provision of services such as power, sewerage management and water is costly to the Department.

- Develop a sustainable approach to maintenance of ageing homestead buildings and infrastructure.

- Apply for adequate capital funding applications and include ongoing maintenance items in capital works program. Allocate adequate staff resources.
- Conduct regular maintenance assessments to assist with planning resource allocations.
- Ensure high quality workmanship and materials for maintenance work undertaken, and compliance with standards and heritage guidelines.
- Develop sustainable strategies for providing power and water services at former stations.
- Ensure homestead brochures clearly define facilities, standards and services available to visitors.

#### Management of Cultural Heritage (historic structures/relics)

The mining/pastoral/wood line cultural heritage which attracts many visitors to the Goldfields former stations includes old buildings, derelict corrugated iron structures, rusted machinery parts, debris, stock yards, mine shafts, railway formations and history, dams and wells. Although of interest, some of these items pose risks to visitor safety and can detract from site presentation. The integrity of a historic precinct can be compromised by the introduction of contemporary elements.

- Undertake a process that identifies and assesses pastoral cultural heritage to provide management and interpretation direction for protection of cultural heritage values.
- Assess and manage visitor risk associated with cultural heritage artefacts.
- Remove unnecessary debris which is not of cultural or heritage value.
- Develop a sensitive approach to preserving and building alongside historic elements while preventing the loss of outback/historic appeal through inappropriate or over development.
- Interpret cultural heritage values.

#### Visitor Risk Issues

Visitor risks will need to be managed in respect to a change in visitor type whilst maintaining the inherent quality of the feature/ landscape.

- Adopt DEC policy and develop strategies for managing risk e.g. mine shafts and wells. Liaise with other agencies and tourism industry groups to ensure visitors are receiving consistent messages regarding visitor risks.
- Conduct on-going visitor risk assessments including structural assessments of buildings.
- Manage visitor risks through site design and on-ground management of facilities and visitors with the aid of campground hosts.
- Ensure high quality travel documents and maps are available to visitors with necessary safety warnings. Provide essential signing at key road junctions and hazard areas.

#### Recreation Opportunities

Traditional recreation opportunities exist to varying degrees at the homesteads, including camping, day use areas and walk trails. The improvement of existing facilities and exploration of alternative opportunities such as new mountain bike trails, interpretive walk trails, day use areas, interpretation centres, self guided history drive trails and 4WD day circuits with historical/environmental themes could occur to value add to visitor experience.

- Improve existing facilities and investigate alternative recreation opportunities that allow visitors to engage with the landscape and also value add to their experience of the Goldfields.
- Incorporate 'Access for More' principles to cater for visitors with disabilities.
- Liaise with other agencies during planning to ensure that recreational developments are complementary to those planned by other agencies and that management objectives are not compromised by lack of co-operation or joint planning.<sup>1</sup>

---

<sup>1</sup> DEC (1994) *Goldfields Region: Regional Management Plan 1994-2004*, pg 86



### Great Western Woodlands

In November 2010 the Biodiversity and Cultural Conservation Strategy for the Great Western Woodlands (GWW)<sup>2</sup> was finalised and released. It addresses all strategic aspects of land use and management within the GWW including the need for more recreation site development and opportunities.

The majority of Credo falls within the GWW and there are opportunities to incorporate and achieve strategies for research, education, interpretation, tourism and recreation within the planning and development for these sites. Credo has the potential to become a major GWW field study centre and research site for the GWW with development of appropriate interpretation, education, research facilities, accommodation and long term study sites.

- Ensure that the GWW strategies are considered and incorporated into master plans, developments and specific site planning.

### Land Use Activities

Non-recreation activities occurring in the vicinity of, or on, the former station lands may include mining and exploration, forest products harvesting and the pastoral business of neighbouring properties.

- Ensure that consultation with relevant neighbours, local government, State Departments and stakeholder groups occurs and that recreation proposals are cognisant of current and proposed land use activities to avoid potential land use conflict and/or visitor risks.

### Campground Host Accommodation

Campground hosts make a valuable contribution to site management and need to be located strategically on site to be fully effective. Provision of suitable accommodation with private, comfortable facilities is important for morale and retention in these positions.

- Provide a designated area for campground host accommodation in a location which is conducive to the role of the hosts.
- Ensure facilities allow privacy and comfort to promote the retention of volunteer staff in remote locations.

### Caretaker accommodation

Full time resident caretakers at Credo assist with site management and maintenance. Accommodation is currently provided in the homestead building which is also used by visiting DEC staff and researchers. Provision of suitable accommodation with private, comfortable facilities is important for morale and retention in these positions.

Future plans for a new field study centre with accommodation facilities for DEC staff may also cater for caretakers.

- Provide a designated area for caretaker accommodation which is compatible with long term planning for staff accommodation and field study centre plans.
- Review homestead building facilities and upgrade staff accommodation as required.

### Field Study Centre

Proposals for a Great Western Woodlands field study centre at Credo will include a research centre and accommodation facilities. The field study centre will provide an opportunity to promote the GWW as a distinct area with high conservation values worthy of protection in accordance with the GWW strategy.<sup>3</sup>

---

<sup>2</sup> DEC (2010) *A Biodiversity and Cultural Conservation Strategy for the Great Western Woodlands*

<sup>3</sup> DEC (2010) *A Biodiversity and Cultural Conservation Strategy for the Great Western Woodlands*

- Develop a field study centre with research and staff accommodation and facilities which promotes GWW values and allows operation of GWW core functions.

#### Indigenous Representation

Traditional Owners have involvement in park management and operations, and provide key connections to land and direction for future planning and management.

- Maintain strong working relationships with Aboriginal community groups and progress joint management initiatives.
- Aim to improve visitor awareness of Aboriginal culture through interpretation where appropriate.

#### Interpretation and Communication

An effective visitor communication plan is essential to ensure safe use of the lands and facilities, to assist with the challenges of visitor management and to help conserve natural and cultural values.

- Develop an integrated visitor communication plan.
- Liaise with relevant agencies and tourism industry groups to ensure consistent information is released.
- Provide up to date information on DEC website, including details of recreation sites and activities, road conditions, events, 4WD trail locations and 'Access for More' sites for visitors with disabilities.
- Investigate on-line booking system to better manage visitor groups and campers.

#### Staging and priorities – Goongarrie and Credo

Note: For more detail refer to tables in section **10.3 Project planning and funding**

Stage	Location	Actions
<b>GOONGARRIE</b>		
<b>Stage 1 Works</b>	Zone A: Homestead Precinct	<ul style="list-style-type: none"> <li>▪ Undertake structural assessment and site planning and design</li> <li>▪ Construct access roads and parking areas</li> <li>▪ Install rehabilitation measures</li> <li>▪ Carry out building repairs</li> <li>▪ Install new furniture and signs</li> <li>▪ Install visitor information centre and day use facilities</li> <li>▪ Upgrade existing 4km walk trail, install signs</li> </ul>
	Zone B: Recreation Sites and Short Drive Circuit	<ul style="list-style-type: none"> <li>▪ Upgrade southern access road and T junction, signpost</li> <li>▪ Install information lay-by near Goldfields Hwy turn-off</li> </ul>
<b>Stage 2 Works</b>	Zone A: Homestead Precinct	<ul style="list-style-type: none"> <li>▪ Undertake site planning and design</li> <li>▪ Install circulation paths, signage and historic precinct interpretation</li> <li>▪ Provide campground host accommodation</li> <li>▪ Construct campgrounds and facilities</li> <li>▪ Construct cycle trail, signs and interpretation</li> </ul>
	Zone B: Recreation Sites and Short Drive Circuit	<ul style="list-style-type: none"> <li>▪ Upgrade northern access road and T junction, signpost</li> <li>▪ Install information lay-by near Goldfields Hwy turn-off</li> </ul>
<b>All Stages/ Stage 3 wks</b>	Zone B: Recreation Sites and Short Drive Circuit	<ul style="list-style-type: none"> <li>▪ Plan and construct recreation sites, walk trails, self-drive trail routes, stops/points of interest, interpretation and signage</li> </ul>
<b>All Stages/ Stage 4 wks</b>	Zone C: 4WD Circuit	<ul style="list-style-type: none"> <li>▪ Plan and construct 4WD trail routes, stops/points of interest and interpretation and signage</li> </ul>

Stage	Location	Actions
<b>CREDO</b>		
<b>Stage 1 Works</b>	Zone A: Homestead Precinct	<ul style="list-style-type: none"> <li>▪ Undertake structural assessment and site planning and design</li> <li>▪ Construct access roads and parking areas</li> <li>▪ Undertake rehabilitation measures</li> <li>▪ Upgrade shearing shed area into day use and interpretation node</li> <li>▪ Install circulation paths, signage and historic precinct interpretation</li> <li>▪ Upgrade homestead building and staff and caretaker accommodation</li> </ul>
	Zone B: Recreation Sites and Short Drive Circuit	<ul style="list-style-type: none"> <li>▪ Upgrade access road and T junction, signpost</li> <li>▪ Install information lay-by near Coolgardie North Rd turn-off</li> </ul>
<b>Stage 2 Works</b>	Zone A: Homestead Precinct	<ul style="list-style-type: none"> <li>▪ Undertake site planning and design</li> <li>▪ Construct campgrounds and facilities</li> <li>▪ Upgrade Shearers' Quarters buildings</li> </ul>
<b>Stage 3 Works</b>	Zone A: Homestead Precinct	<ul style="list-style-type: none"> <li>▪ Undertake site planning and design</li> <li>▪ Construct the field study centre research facilities and accommodation</li> <li>▪ Construct walk/cycle trail, signs and interpretation - western section</li> </ul>
<b>All Stages/ Stage 4 wks</b>	Zone B: Recreation Sites and Short Drive Circuit	<ul style="list-style-type: none"> <li>▪ Plan and construct recreation sites , walk trails including eastern section of walk/cycle trail, self-drive trail routes, stops/points of interest, interpretation and signage</li> </ul>
<b>All Stages/ Stage 5 wks</b>	Zone C: 4WD Circuit	<ul style="list-style-type: none"> <li>▪ Plan and construct 4WD trail routes, stops/points of interest, interpretation and signage</li> </ul>

### 3 BACKGROUND

#### 3.1 Study area

The study area includes:

- 100,686ha Goongarrie former station and homestead
- 212,126ha Credo former station and homestead

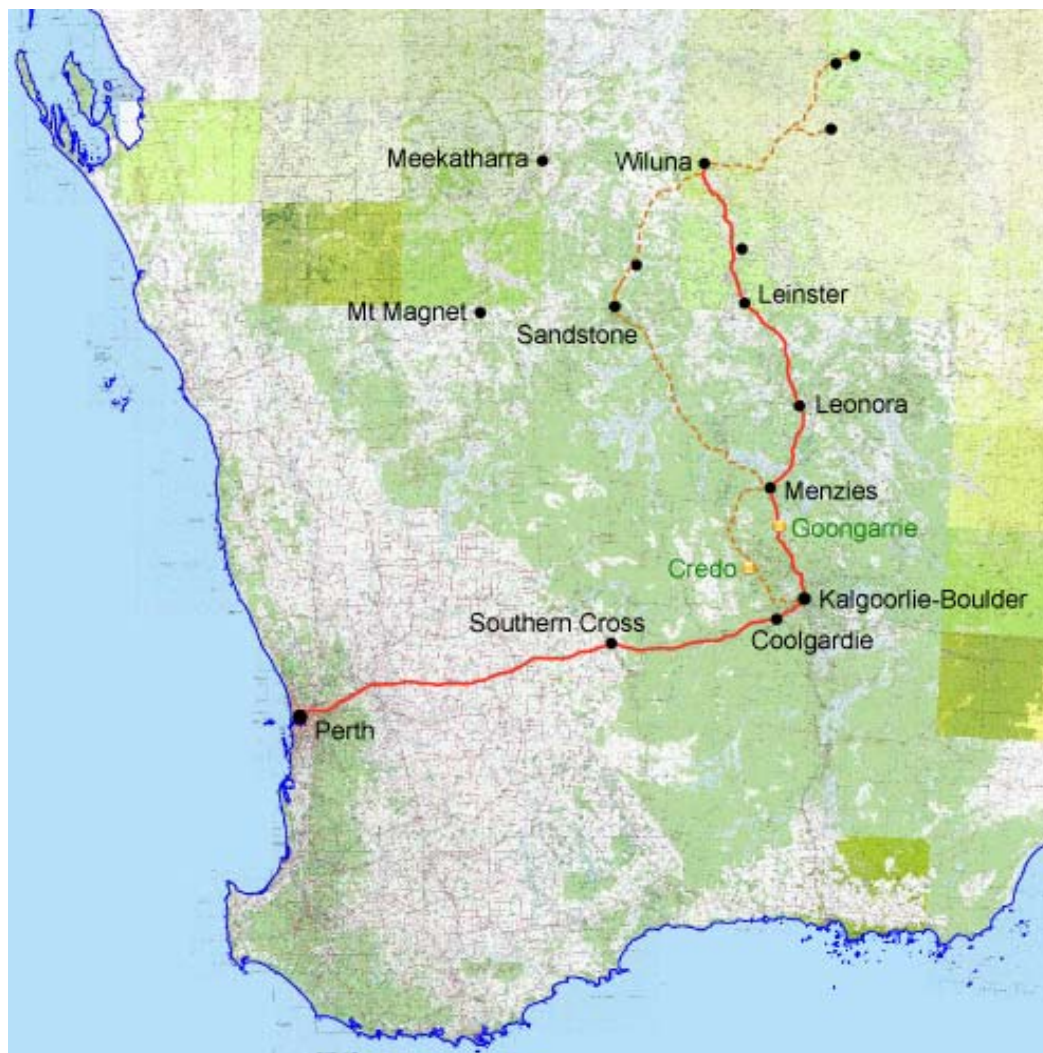
The study area also takes into account:

- Relationships/links with other attractions in the area including National Parks, Nature Reserves, Conservation Parks, recreational sites, former stations, nearby towns and historic sites.
- Proximity to major thoroughfares and 2WD/4WD self-drive adventure trails - the self-drive market is an important component of tourism in the Region, location near and links to well promoted routes can have a significant impact on visitation.
- Land use activity in the study area and surrounds, particularly pastoral, exploration and mining - any planning needs to be cognisant of current and future proposals.

#### 3.2 Location plan

The locations of Goongarrie and Credo former stations, DEC managed estate, recreation sites, local town centres and popular tourism routes around Kalgoorlie are shown in **Drawing 1** "Contextual Plan: Goldfields Reserves and Trail Network near Kalgoorlie".

Map of south west of Western Australia showing Goongarrie and Credo former pastoral stations:



### 3.3 Regional context

#### Former Pastoral Station Acquisition

In recent years (1989-2007), DEC acquired a number of former pastoral stations throughout the Goldfields Region in an expansion of the existing reserves system. The Goldfields Region: Regional Management Plan 1994-2004 identifies the aim of the conservation reserves system to build up conservation estate of poorly represented biological sub-regions through purchase of pastoral leases, in particular within the eucalypt woodlands and mulga woodlands.

Goongarrie was purchased by DEC in 1995 under the Sandalwood Conservation and Regeneration Program as a representative conservation area with high conservation and landscape values. Its eastern boundary adjoins Goongarrie National Park, created in 1978 primarily as a representative area to conserve diverse flora and fauna in the mulga-eucalypt woodland transition zone.

Credo, purchased by DEC in 2007 as a conservation reserve as part of the CAR (Comprehensive, Adequate and Representative) conservation reserve system, incorporates Rowles Lagoon Conservation Park (404 ha, gazetted 1986) and Clear and Muddy Lakes Nature Reserve (1926 ha, gazetted 1981), both valued fresh water wetlands. Credo forms part of the extensive 80,500ha catchment area for these wetlands.

Goongarrie and Credo are both representative of the Coolgardie (eucalypt dominated) and Murchison (mulga/acacia dominated) biogeographic regions. DEC manages Goongarrie and Credo (currently UCL) as proposed Conservation Parks in accordance with the Conservation and Land Management Act 1984.

The western half of the Goldfields, previously deficient in conservation reserves (see **Appendix A**), now has a number of existing and proposed reserves being managed by DEC including former leasehold, Conservation Parks, National Parks and Nature Reserves. Goongarrie and Credo feature as part of this newly established network of reserves, which provide valuable conservation estate and new recreation opportunities. The extent of recent additions to the reserves system can be seen by comparing the 1992 map shown in **Appendix A** with **Drawing 1** showing the current reserves under DEC management.

#### Proximity to Regional centres/major towns

Goongarrie and Credo receive relatively high visitation compared to other sites in the Goldfields due to their proximity to major population centres such as Kalgoorlie, Boulder, Coolgardie and Kambalda and the smaller town of Menzies.

Goongarrie is located 90km north of Kalgoorlie via the Goldfields Highway, a 1 hour drive. Credo is located 73km north of Coolgardie via Coolgardie North Road, a 1 hour drive from Coolgardie and 1.5 hours drive from Kalgoorlie. Credo can also be accessed via Ora Banda. Many local visitors stay at Goongarrie and Credo for weekend camping, bush workshops and events.

Kalgoorlie is the 'Gateway Centre' for visitors to the Goldfields and a service hub providing information, maps, brochures, accommodation, tours, bookings and supplies. The Regional DEC office is located in Kalgoorlie. Tourists on self-drive adventures in the Goldfields will generally spend some time in Kalgoorlie and head out on routes which are likely to pass by Credo and Goongarrie.

#### Tourism network

Goongarrie extends east and west of the Goldfields Highway, the primary north-south access road from Kalgoorlie to Wiluna and one of the few sealed arterial roads in the Region. The Goldfields Highway is a major tourism thoroughfare and sections are incorporated in self-drive adventure trail itineraries such as the *Golden Quest Discovery Trail (GQDT)* and further north the *Leonora Loop Trails*. Credo, located just off Coolgardie North Road, also lies along the route of the *GQDT* and the *Golden Quest Green Trail (GQGT)*. Both Goongarrie and Credo receive a number of visitors from these self-drive trails looking for day-use facilities or an overnight stop.

While the majority of visitors to these former stations still travel from local Regional centres for weekend camping and/or special events, the self-drive market is steadily growing. Apart from the well promoted *GQDT*, other self drive trails feeding into the Goldfields include the *Gunbarrel Highway* and *Canning Stock Route* from the northeast via Wiluna, *Gascoyne/Murchison Miners Pathway* and *Kingsford Smith Mail Run* linking from the northwest via Sandstone and Meekatharra respectively, the *Anne Beadell Highway* from the east via Laverton, the *Golden Pipeline Drive Trail* from the Perth Hills in the west via Coolgardie and Kalgoorlie and the *Holland Track* from the southwest (near Hyden) arriving in Coolgardie. The *Outback Way* from Winton in Queensland to Laverton (approximately 360km NNE of Kalgoorlie), is also expected to bring flow-on effects to northern Goldfields tourism. Some of these routes are shown on **Drawing 1**.

Recent DEC visitor statistics for the Goldfields Region note a slow and steady increase in visitation to sites such as Goongarrie and Credo as facilities improve and with promotion of the sites and the self-drive market. Goongarrie and Credo are well located with access to a range of attractions, activities, reserves and existing and potential recreation sites in the area. Surrounded by an established road network and positioned on the routes of increasingly popular 2WD and 4WD self-drive trails, it is expected that with more promotion and marketing a steady flow of visitors will be arriving at the homesteads and recreation sites of Goongarrie and Credo in the foreseeable future.

#### Mining, History and Attractions

The gold and nickel mining industry is the principal economic base for much of the Region with most operations located in the central and northern Goldfields. Present day mining operations and mining history form a key visitor attraction in the Goldfields and include features such as historic sites, towns, buildings, museums, mine tours and prospecting. The diversity and extent of mining history is best accessed by road and can be experienced in towns, via coach tours, 2WD drive trails and throughout remote areas of the Goldfields where 4WD exploration, tours and self-drive visitors will encounter numerous relics, artefacts, wells and mines.

The *GQDT*, an attraction in its own right, is the primary mining history self-drive trail and passes by Goongarrie and Credo homesteads. Specific *GQDT* sites on the former stations include Rowles Lagoon, Ularring and the Goongarrie town site (railway cottages on Goldfields Hwy). The recently developed *Golden Quest Green Trail* which visits locations with outstanding environmental, historical and cultural values also has a site at Rowles Lagoon.

For visitors looking for a taste of the Goldfields pastoral history, the former station homesteads have plenty to offer with numerous relics, old rusting machinery parts and vehicles, rustic station buildings and structures including the old shearing shed and stock yards at Credo and the machinery shed at Goongarrie.

Other attractions in the vicinity include the historic wood lines in the south and to the west of Credo, Goongarrie National Park, Lake Goongarrie, Ularring Rock, mining towns such as Ora Banda, the Ora Banda Hotel, abandoned town sites like Callion, Siberia and Davyhurst with old cemeteries, Lake Ballard to the north, lone graves and 4WD trails.

#### Great Western Woodlands

There is increasing interest in the GWW with promotion, campaigns and recognition of the values and uniqueness of the area. The majority of Credo falls within the Great Western Woodlands (GWW). Strategies outlined in the recently released Biodiversity and Cultural Conservation Strategy for the Great Western Woodlands<sup>4</sup> will impact on planning and need to be incorporated into site development. Credo especially has great potential for incorporating specific aspects around interpretation, education and research (field study centre).

---

<sup>4</sup> DEC (2010) *A Biodiversity and Cultural Conservation Strategy for the Great Western Woodlands*

### Aboriginal History and Joint Management

Aboriginal history is not well recorded for Goongarrie and Credo former stations however both stations are important to Aboriginal people and there is an interest in future joint management.

Aboriginal people lived in the Goongarrie area and it is likely large granite outcrops, such as Deadman's Soak, were important water catchments. The reserves have many important Aboriginal sites, including the adjacent Adelong Station managed by the Menzies Aboriginal Corporation.

Goongarrie has three registered sites with five native title claims over the area managed by the Goldfields Land and Sea Council (GLSC). Goongarrie reserve and the adjoining Goongarrie National Park have a preliminary joint management steering committee to progress joint management.

At Credo, evidence of Aboriginal people living on the land, hunting and gathering indicates a strong connection with the former station lands. Significant rock holes have been identified and Ularring Rock was an important water catchment area. Aboriginal people lived and camped at Rowles Lagoon for many years before the arrival of early settlers and in later years many worked at Credo as station hands.

Credo has four registered sites, which include mythological and water sources, with four native title claims over the area managed by the GLSC. Past joint management discussions have been held regarding the development of recreation facilities at Rowles Lagoon. In April 2008, a joint management discussion for Credo addressed management of the homestead, possible Aboriginal camp sites and processes for development of a steering committee or working group leading to a Park Council. These processes will continue under the memorandum of understanding with the GLSC.<sup>5</sup>

### **3.4 Recreation planning history**

#### Documents to date

Current recreation planning is guided by the "Goldfields Region: Regional Management Plan 1994-2004", Section 15 "Recreation and Tourism" which outlines general principles, policy guidelines and strategy.<sup>6</sup>

Recreation master planning and visitor services planning have not been conducted for former station properties in the Goldfields Region. There are, however, a number of studies and projects which provide direction and are a useful reference source.

Related documents prepared to date include (but are not limited to) -

- DEC (2009) *Goldfields Region Visitor Statistics Report (VISTAT) 2008/09*. Report prepared by Fety, L. and Pearce, K.
- DEC (2009) *Inventory of Tourism Assets and Opportunities of DEC Rangeland Properties and the Goldfields Region of Western Australia*.
- DEC (2008) *Lorna Glen and Earahedy: PVS Research and Operations Facilities - Development Planning*. Report prepared by Kealley, I.
- DEC (2010) *Goldfields Parks and Visitor Services (PVS) Field Visit Report, April 2009*. Report prepared by Wharton, S.
- DEC *Goongarrie Camping and Day Use: Site Development Plans*, prepared April 2007
- DEC *Rowles Lagoon Conservation Park: Site Development Plans*, prepared January 2003
- DEC (1994) *Goldfields Region: Regional Management Plan 1994-2004*. Management Plan No. 27.

<sup>5</sup> DEC (2009) *Inventory of Tourism Assets and Opportunities of DEC Rangeland Properties and the Goldfields Region of Western Australia*, pg 25

<sup>6</sup> DEC (1994) *Goldfields Region: Regional Management Plan 1994-2004*, pg 82-87

- DEC (2000) *Rowles Lagoon Conservation Park and Clear and Muddy Lakes Nature Reserve Management Plan 2000-2010*.
- DEC (2005) *Goldfields Region Operations Plan 2005/06*
- DEC (2010) *Parks and Visitor Services Strategic Plan 2010/11 – 12/13 – Goldfields Region*. Draft Report.
- DEC (2010) *Biodiversity and Cultural Conservation Strategy for the Great Western Woodlands*.
- Legislative Assembly Economics and Industry Standing Committee (2009) *Inquiry into the Provision, Use and Regulation of Caravan Parks (and Camping Grounds) in Western Australia*.
- Legislative Assembly Economics and Industry Standing Committee (2010) *Inquiry into DEC's management of former pastoral leases*.
- DEC (2003) *PVS Opportunities in the Rangelands: A Brief Report on the May 2003 Visit to the Northern Goldfields*. Report prepared by Schmidt, W.

#### Document review/comments

The Vistat Report and the Inventory of Tourism Assets provide valuable background information and an inventory of existing/current facilities, visitor statistics, trends and data collection methods/deficiencies.

The Goldfields PVS Field Visit Report, April 2009 followed a Parks and Visitor Services field trip to several former Goldfields pastoral stations including Goongarrie and Credo. The field trip considered management issues faced by Regional staff and a basis for assessing possible development potential for each of the former stations. The report identifies site issues, opportunities and constraints and considerations for future actions. A key recommendation identified in the document was the preparation of a Recreation Master Plan for Goongarrie and Credo former stations.

The Goongarrie Camping and Day Use Site Development Plans, prepared April 2007, focus on development of facilities around the homestead precinct at Goongarrie and have been partially implemented. These plans were reviewed during this Recreation Master Planning process.

#### Work to date

Since the acquisition of Goongarrie in 1995 and Credo in 2007, extensive work has been undertaken by DEC Regional staff with a focus on decommissioning the pastoral leases leading to management of the areas as future conservation parks. It has also involved major clean-ups, repairs and developing and maintaining infrastructure. Site redevelopment work at Credo since handover in mid 2007 has been limited to upgrade of existing infrastructure (solar hybrid power system, dam and rain water, homestead and shearer's quarters' buildings). Goongarrie has a much longer history of works since 1995 involving upgrading of bore and rain water supply, a portable generator power system, all buildings, roads, a walk trail and simple camping sites.

#### Need for integrated planning

Current visitation levels to Goongarrie and Credo are relatively high for the Goldfields and expected to increase. Although the homesteads have been well maintained to date, within the constraints of resources, the current incremental needs based response to maintenance and upgrade is costly. Management issues have emerged and the existing facilities need coordinated and major upgrading to ensure the protection of heritage and environmental values, visitor safety and enjoyment.

The Vistat Report notes that previous site development in the Region has been well received<sup>7</sup>. Recent visitor survey forms for Goongarrie report that visitors like the "remote feel" and "simple site facilities and originality" of Goongarrie. The report acknowledges that "increased PVS sites local to Kalgoorlie-Boulder, improved roads and interpretation services will enhance visitor experiences and enjoyment"<sup>8</sup>.

---

<sup>7</sup> DEC (2009) *Goldfields Region Visitor Statistics Report (VISTAT) 2008/09*, pg 8

<sup>8</sup> Ibid., pg 24



There is a need for a cohesive approach to planning recreation, communications and tourism services in the Goldfields Region. This Master Plan is intended to be compatible and complementary to future visitor services planning.

The planning process will need to –

- Establish a clear understanding of what is to be achieved.
- Ensure that key stakeholders are involved and that community interests are represented.
- Consider all views and information in developing the plan.
- Be cognisant of the broader planning, tourism and management issues that have Regional implications beyond Goongarrie and Credo.

### **3.5 Statement of management philosophy**

DEC is committed to responsible management of recreation and tourism on more than 27 million hectares of the State's lands and waters. Development planning is guided by The CALM Act (1984), Policy Statement No. 18 - Recreation, Tourism and Visitor Services, October 2006 and the Parks and Visitor Services (PVS) Strategy 2007 - 2011.

The Department's Vision and Mission stated in the DEC Corporate Plan 2007-2009 (pg 1) are as follows -

Our Vision

*A healthy, diverse and well-managed Western Australian environment*

Our Mission

*Working with the community, we will ensure that Western Australia's environment is valued, protected and conserved, for its intrinsic value, and for the appreciation and benefit of present and future generations.*

The main objectives outlined in the Corporate Plan 2007-2009 are -

1. Conserving biodiversity
2. Managing natural resources and promoting environmentally sustainable practices
3. Leading climate change actions
4. Creating a world class parks system
5. Implementing sustainable forest management
6. Preventing pollution and remediating contamination
7. Maintaining community involvement and support
8. Improving the way we do business

DEC's Policy Statement 18 states -

The objective of the Parks and Visitor Services (PVS) Service of DEC is:

*To provide world-class recreation and tourism opportunities, services and facilities for visitors to the public conservation estate while maintaining in perpetuity Western Australia's natural and cultural heritage.*

### **3.6 Management goals**

The management goals for Goongarrie and Credo are -

- Manage the proposed reserves as multiple use proposed conservation parks for all values and undertake all necessary land management works.
- Maintain and develop specific recreation and tourism uses of the areas, specifically the developed homestead precincts.
- Maintain the 'remote feel' and 'pastoral character' of the homestead precincts.
- Use the developed homestead precincts for recreation, education, interpretation, group activities and eco-education opportunities.
- Develop zoned recreation and tourism use.
- Progress research to support all aspect of management and land use.

### 3.7 Consultation/community stakeholders

A number of other agencies are involved in the planning and provision of outdoor recreation opportunities in the Region. As stated in the Goldfields Management Plan -

"It is recognised that there is a need to plan with local authorities and State Government Departments to ensure that recreational developments are complementary to those planned by other agencies and that management objectives are not compromised by lack of co-operation or joint planning."<sup>9</sup>

The importance of commercial and community consultation and involvement is also highlighted -

"Similarly, consultation is required with groups having commercial interests to ensure recreation developments and information services are compatible with management objectives." .... "User groups such as local clubs, State associations and community interest groups should have their aspirations represented in the planning and management of recreation resources. A considerable contribution to ongoing planning and management of recreation on Departmental land can be achieved through effective liaison with such bodies."<sup>10</sup>

Staff within the Goldfields Region work with traditional owners in many DEC managed reserves to help protect natural and cultural values of the area and to ensure traditional practices are still maintained. Consultation with Aboriginal people during the planning process and development of joint management strategies is an important priority for land management. The existing MoU with the GLSC will continue to be used as the primary means of progressing interaction with Aboriginal groups.

Volunteers have a lot to offer in terms of skills, support and management assistance and the development of partnerships with volunteers groups is desirable. The opportunities provided by volunteer involvement are acknowledged in the Goldfields Management Plan -

"Volunteer activities are of value to DEC not only because the Department's work capabilities and skills base are expanded at minimal cost, but also because such activities build communication links and understanding between the department and the community."<sup>11</sup>

Potential stakeholders with an interest in the future planning of Goongarrie and Credo are as follows -

#### Indigenous

Goldfields Land and Sea Council

Native Title Claimants and various family groups

#### Tourism

Mid West Development Commission (for links towards Sandstone)

Goldfields-Esperance Development Commission

Tourism WA – Regional Manager and Product Development Manager

Golden Outback

Golden Quest Discovery Trail

DEC Tourism Branch

Commercial interests/tourism operators

#### Government

DEC – Departmental head office and branches

---

<sup>9</sup> DEC (1994) *Goldfields Region: Regional Management Plan 1994-2004*, pg 86

<sup>10</sup> Ibid., pg 87

<sup>11</sup> Ibid., pg 90

Shires of Coolgardie and Menzies, City of Kalgoorlie-Boulder  
Department of Mines and Petroleum (DMP)  
Department of Indigenous Affairs (DIA)  
Forests Products Commission

Wetland Management (Rowles Lagoon)

Environment Australia <sup>12</sup>  
Ramsar Convention Bureau <sup>13</sup>

Commercial

Amalgamated Prospectors and Leaseholders Association (APLA)  
Mining and exploration companies and representative bodies (e.g. Chamber of Minerals and Energy of WA)  
Forest produce harvesters and commercial producers licence holders  
Neighbours (e.g. pastoral leaseholders) to DEC managed estate and UCL

Community

Great Western Woodlands coalition  
Wilderness Society (for GWW)  
Track Care WA  
Goldfields Naturalist Club  
NRM groups, conservation volunteers  
Volunteers, campground hosts, caretakers  
Community committees, service clubs and businesses  
Schools, colleges and universities  
WA 4WD Drive Association  
Eastern Goldfields Historical Society

---

<sup>12</sup> DEC (2000) *Rowles Lagoon Conservation Park and Clear and Muddy Lakes Nature Reserve Management Plan 2000-2010*, pg 1

<sup>13</sup> *Ibid.*, pg 1

## 4 MASTER PLAN AIMS

### 4.1 Vision statement

Visitors to Goongarrie and Credo will have the opportunity to experience the remoteness of the outback, vast open spaces, spectacular night skies, silence, theatrical landscapes, vibrant colours, geological features and land systems, subtle shifts in vegetation composition, unique eucalypt woodlands and acacia (mulga) woodlands, colourful spring wildflowers, salt lakes, clay pans and diverse indigenous and non-indigenous cultural heritage.

The vision for recreation and tourism use at Goongarrie and Credo is based on the principles of valuing, protecting and conserving the Western Australian environment as stated in the DEC mission statement and is in accordance with the DEC PVS Strategy 2007-2011 vision for recreation and tourism which states –

“The principles on which this strategy is based should ensure that the public not only enjoys and appreciates the natural environment but also helps to manage and protect it.”<sup>14</sup>

Goongarrie and Credo will offer a range of recreation, tourism, educational and nature-based activities. Opportunities will be provided for visitors to experience the landscape first hand and to learn about the values of the places they are visiting. Facilities provided will be planned and managed in such a way as to cater for appropriate recreation activities while conserving surrounding landscape values, cultural heritage and the character of the sites.

Interactive opportunities such as interpretation create memorable and personable experiences which motivate people to a greater understanding and care of the environment. An emphasis on these opportunities will enable visitors to learn about the Goldfields landscape and cultural heritage. It is anticipated that visitors will experience and enjoy this unique part of Western Australia and leave with a better understanding of conservation of natural area biodiversity, respect for the landscape and its cultural history, and an appreciation of management issues and plans.

### 4.2 Aims/Objectives

The Recreation Master Plan will aim to -

- Provide a planning framework to strategically guide future recreation redevelopment work and facilitate discussions with stakeholder groups.
- Assess current recreation and tourism opportunities, services and facilities.
- Identify site issues and provide proposed actions.
- Identify site and 'park' constraints and provide options for future development.
- Provide planning and design recommendations from broad scale strategic planning issues to site design and the provision of information and interpretation facilities.
- Identify management goals and priorities and assist with determining appropriate management strategies to conserve landscape values and cultural heritage.
- Establish priorities and actions for capital works.

### 4.3 Desired outcomes

- A range of recreation, tourism and education opportunities will be provided throughout Goongarrie and Credo.
- Recreation and tourism will be ecologically sustainable and consistent with land management objectives.
- Facilities, activities and services will be of a consistently high quality and meet visitor needs, while preserving landscape/cultural values and the outback experience.
- Frequent opportunities for non-vehicle based activities such as walking and cycling will be provided in accordance with 'Healthy Parks, Healthy People' strategies.

<sup>14</sup> DEC (2006) *Parks and Visitor Services Strategy 2007-2011*, pg 7

- Numerous interactive opportunities will be provided to create memorable visitor experiences to motivate greater understanding and care of the environment, cultural heritage and encourage support for conservation and management initiatives.
- Visitors with disabilities will be catered for and access to facilities/features made available where practical.
- Visitor risks will be managed.
- Successful partnerships will be developed between management and stakeholder groups.
- Joint management initiatives with Traditional Owners will be successfully implemented.

## 5 SITE ANALYSIS

### 5.1 General biophysical factors and landscape character for Goldfields Region

The DEC Goldfields Region covers 34.3% of WA and comprises an area of approximately 84 million hectares. DEC Goldfields Region manages 8.6 million ha of conservation reserves including National Parks, Conservation Parks, Nature Reserves, Timber Reserves, State Forest and former Pastoral Leases, and is also responsible for fire preparedness, weed and feral animal control on 40 million hectares of Unallocated Crown Land.

Most destinations outside major Regional centres are classed as remote and visitors to the Goldfields need to be well prepared for the challenges of the harsh climate and arid landscape with its exposed, rugged terrain. Travel routes in the Region are predominantly gravel roads which are generally in good condition but can be affected by rain or prolonged dry spells.

Temperatures range from -3°C to 45°C with hot, dry summers and mild winters. The average rainfall ranges from 150-300mm per annum. "There is a climatic gradient from a winter rainfall regime of approximately 300 mm per annum in the south west to an unseasonal regime of approximately 150 mm in the northern Nullarbor area. The contribution to rainfall of cyclonic influences, particularly rain bearing depressions, increases to the north of the region."<sup>15</sup>

"Geographically the western half of the region comprises Pre-cambrian granites, gneisses and greenstones or erosional remnants, e.g. breakaways and sandplains of these components. Gentle topography is characteristic with minor topographic relief offered by low hills and ranges of banded ironstone and greenstone in the Yilgarn." Tertiary limestones and other marine sediments of the Nullarbor karst occur to the east and the red sandplains and dunes of the desert further north. "Major ancient drainage lines and lakebeds of Tertiary age are interspersed with other landforms throughout the Goldfields."<sup>16</sup>

"Soils reflect geology with red-brown earthy loams in the south west, shallow calcareous loams on the Nullarbor, red siliceous sands in the desert and brown sandy clay loams over much of the Mulga woodlands."<sup>17</sup>

"Flora and fauna are determined by climatic and geological gradients within the region as well as more recent land use practices."<sup>18</sup> Vegetation, although dependent on soil type, is characterised by a dominance of eucalypt woodlands in the Coolgardie biogeographic region and acacia (mulga) woodlands and shrub lands in the Murchison biogeographic region. The vegetation cover has been impacted by the history of pastoral activity prior to DEC management of the former stations.

Between 1890 and 1960 an estimated 30 million tonne of timber were removed from 3.5 million hectares of Eucalypt and Mulga woodland for use as fuel and in the mining industry. The trees have regenerated prolifically and much of the inland eucalypt forest seen today is regrowth 50-100 years old. Timber was hauled in from the bush on narrow gauge railways called wood lines. Formations for the wood lines can still be seen in some parts and are of historic interest.

The Landscape Character Types relevant to the study area are Kalgoorlie Plains and Meekatharra Plateau Landscape Character Types. Kalgoorlie Plains corresponds approximately with the Coolgardie biogeographic region and Meekatharra Plateau with the Murchison biogeographic region. For further detail relating to Landscape Character refer to Reading the Remote.<sup>19</sup>

<sup>15</sup> DEC (1994) *Goldfields Region: Regional Management Plan 1994-2004*, pg 14

<sup>16</sup> Ibid., pg 14

<sup>17</sup> Ibid., pg 14

<sup>18</sup> Ibid., pg 14

<sup>19</sup> CALM (1994) *Reading the Remote: Landscape Characters of Western Australia*, pg 66-73, 90-99

## 5.2 Site analysis detail for Goongarrie and Credo

Summaries of site details for Goongarrie and Credo follow.

### Goongarrie

#### *Topography/landform*

- Ancient, eroded landscape typified by gently undulating plains with rock outcrops, rugged low ranges and breakaways.<sup>20</sup>
- Geological features and many land systems include granite sheets, breakaways, greenstone hills, sand dunes and salt lakes.

#### *Flora/fauna*

- The Goongarrie reserves and surrounding area is located in the transition zone between the Coolgardie (eucalypt dominated) and Murchison (acacia dominated) biogeographic regions. To the east, Goongarrie Station abuts Goongarrie National Park; both have rich and diverse plant and animal life.

#### *Heritage values*

- Goongarrie reserves have a rich cultural history with many important Aboriginal sites including the adjacent Adelong Station managed by Menzies Aboriginal Corporation, rock holes, graves, watering points and a long history of prospecting, mineral exploration, mining and sandalwood harvesting.
- Goongarrie was the first important gold find after Coolgardie with the gold rush peak during the 1890s. At its height the town had 112 houses.
- By the early 1900's the Goongarrie mines had failed. It continued to be a railway centre until 1928. Three remaining historic railway cottages are an attraction on the *Golden Quest Discovery Trail*.
- The Goongarrie Station pastoral lease was taken up to run sheep in 1924 but never fully developed because of difficulty in establishing water points.
- In 1995 Goongarrie Station was purchased by CALM (now DEC) to expand existing conservation reserves. DEC now manages Goongarrie as a proposed Conservation Park.
- Mining still occurs in the area.

#### *Access*

- The homestead is located 14 km west of the Goldfields Highway (sealed), approximately 90 km north of Kalgoorlie.
- The main access is via an unsealed 2WD grade road providing access in most weather.
- There is a secondary access road from further north on the Goldfields Hwy near Comet Vale. This road is also an unsealed 2WD grade road (in dry conditions only).
- Alternative homestead access via 4WD tracks from the west.
- Access to parts of Goongarrie former station beyond the homestead precinct is via DEC management tracks (maintained, 4WD grade).

#### *Existing Facilities*

- Goongarrie homestead complex has 3 main accommodation buildings (Homestead, Sandalwood Camp and Shearers' Cottage) and facilities. All buildings have tables, wood BBQs, bore water supply, rainwater, showers, some furniture, provisions for electricity (BYO generator) and toilets.
- Other facilities include a generator shed, machinery shed, stock yards, picnic tables and fire rings in informal camping overflow and a marked 4 km walk trail with brochure.
- Infrastructure includes reticulated bore water, rainwater tanks, hot water system, facilities for portable generator plug in, septic systems and soak wells.
- The homestead facilities provide an excellent group venue for bush workshops, corporate training, bush conferences, meetings, educational camps, school excursions.
- Facilities in the homestead precinct are managed by seasonal campground hosts, not present during summer.

<sup>20</sup> CALM (1994) *Reading the Remote: Landscape Characters of Western Australia*, pg 91

- Camping fees apply; bookings through DEC Kalgoorlie office.

#### *Activities*

- 4WD trips, touring/self-drive trails, history, a base for prospecting where permitted, bush walking, bird watching, astronomy/star watching, cycling, camping, nature study, workshops, group and special events.
- Local attractions include Lake Goongarrie, historic causeway at Lake Goongarrie, mining/pastoral history, Comet Vale town site (established 1898, abandoned 1951), Comet Vale hills and old mine workings, abandoned Goongarrie town site including Railway Cottages (GQDT Site 5) and four graves, as well as Deadman's Soak and a lonely grave to the east near Goongarrie NP. Goongarrie Hill offers views across the salt lakes including Lake Goongarrie. Adelong Dunes to the north as a 4WD day trip.

#### *Credo*

##### *Topography/landform*

- The Coolgardie bioregion has a characteristically gentle topography with the terrain interrupted by many long shallow salt lakes and conspicuous hills and low ranges.<sup>21</sup>
- The Credo area is generally flat with breakaways, broad drainage lines, generally loamy soil, small lakes and clay pans, low greenstone hills and granites. It forms part of the extensive water catchment area for Rowles Lagoon and Clear and Muddy Lakes which is estimated to be over 80,500 ha.
- Rowles Lagoon is the largest natural freshwater wetland in the Coolgardie bioregion and is listed in the "Directory of Important Wetlands in Australia" and managed in accordance with Ramsar guidelines.

##### *Flora/fauna*

- Credo (like Goongarrie) is located in the transition zone between the Coolgardie (eucalypt dominated) and Murchison (acacia dominated) biogeographic regions.
- Credo contains 20 vegetation types (associations). Prominent vegetation includes low woodland of acacia, extensive eucalypt woodlands and scrub heath.

##### *Heritage values*

- Aboriginal registered sites include mythological and water source sites. Rowles Lagoon and Ularring Rock were important sites to Aboriginal people before the arrival of settlers.
- In the 1880's the area flourished as a gold producing area. A number of small towns were developed including Davyhurst, Callion, Mulwarrie, Mulline and Ularring Rock which became a regular stopping point for Cobb and Co services from Coolgardie.
- Credo was later established as a sheep station although pastoral activity was low. The station was mostly destocked 10 years ago and purchased by DEC in 2007 as a proposed conservation reserve.
- Credo incorporates valued freshwater wetlands at Rowles Lagoon Conservation Park (404ha) and Clear and Muddy Lakes Nature Reserve (1926ha) and associated catchment areas.
- DEC now manages Credo as a proposed Conservation Park. Aboriginal traditional owners are interested to participate in joint management.
- There are numerous mining leases on Credo and prospecting activity is widespread.
- Sandalwood harvesting did occur on the station. Sandalwood management for conservation and regeneration will continue in the future.

##### *Access*

- The homestead is located 1 km west of Coolgardie North Road (unsealed, 2WD), approximately 73km north of Coolgardie.
- The main access is via an unsealed 2WD grade road/driveway.
- Alternative homestead access is via 4WD tracks from the south and west.
- Access to parts of Credo former station beyond the homestead precinct is via DEC management tracks (maintained, 4WD grade) and historic wood lines tracks (not maintained, 4WD).

<sup>21</sup> CALM (1994) *Reading the Remote: Landscape Characters of Western Australia*, pg 67



#### *Existing Facilities*

- Homestead building with facilities (used by caretakers), old Shearers' Quarters donga, toilet/shower donga, camp kitchen donga, BBQ, fire rings, tables, rainwater tanks, shearing shed and yard.
- Infrastructure includes hybrid solar/diesel 240v power, sheds, windmills, dam water supply system, dams and air strip.
- The homestead precinct provides a suitable venue for camping groups and bush workshops.
- Informal camping facilities are located a short distance from the homestead at the Shearers Quarters.
- Day use and camping facilities nearby at Rowles Lagoon including a gazetted water ski area when sufficient water levels allow.
- Facilities in the homestead precinct are managed by caretakers (present all year).
- Camping fees apply; bookings through DEC Kalgoorlie office.

#### *Activities*

- 4WD trips, touring/self-drive trails, day use, camping, yabbie fishing at dams, group activities and special events and a base for other activities like prospecting where permitted.
- Rowles Lagoon has boating/water skiing (when water level permits), swimming, canoeing, bird watching, bush walking, picnics and camping
- Local attractions include mining/pastoral history, old town sites, Ora Banda, Ularring Rock (*GQDT* Site 21), Rowles Lagoon (*GQDT* Site 23), wetlands, old soaks and wells, eucalypt woodlands, wood line trails and the Gus Luck Track.

## 6 VISITOR ANALYSIS

### 6.1 General visitation factors for the Goldfields Region

#### Goldfields Visitor Experience

Kalgoorlie-Boulder is a 'Gateway Centre' for visitors to the Goldfields and introduces visitors to the mining and pioneer heritage which are an integral part of the Goldfields experience. Kalgoorlie-Boulder is often promoted as Australia's gold capital, steeped in history. As well as being a modern outback regional centre visitors are attracted by the City's gold rush past with evidence of the City's harsh beginnings, its frontier town streetscape with wide streets and grand public buildings, by Kalgoorlie-Boulder being a working mining town and present day operations at the super pit.

Beyond the major centres, Tourism WA's promotion of the Goldfields (referred to as the "Golden Outback") identifies iconic holiday experiences such as historical/mining, nature-based and outback. Visitors encounter constant reminders of mining and pastoral history, outback towns representing "the real Australia", Coolgardie's attractive historic buildings, ghost towns, gold rush history, the chance to make a fortune from metal detecting alluvial gold, dramatic landscapes, wildflowers, the unique Great Western Woodlands, the bush feeling of remoteness, isolation, vast open spaces, silence, camping under the stars and the opportunity to experience Aboriginal art and culture.

Visitors to DEC managed estate in the Goldfields Region can experience the landscape through activities such as camping, 4WD touring, nature study/appreciation, bird watching and wildflower viewing. The Region has 16 formal recreation sites which include day use and camping areas, homestead stays and the Kalgoorlie Arboretum.

#### Changing trends

Although many of the Goldfields attractions will endure regardless, the nature of experience being sought and expectation of visitors seem to be changing as reflected in the following -

"Tourism in Western Australia is maturing and changing. Visitors to Australia are becoming older, often on repeat visits, are more experienced and are seeking more involvement and first hand experiences – they are often explorers, not viewers. Domestic visitors are often searching for the 'soul' of their country and are venturing away from the coastal fringe. Most have a desire to touch and feel the natural world, authenticity is a pre-requisite. Many are seeking destinations which offer remoteness, ruggedness, wilderness experiences and opportunities to become more aware of scenic, environmental, historical and spiritual values in the natural and cultural landscapes of WA."<sup>22</sup>

In the 2008/09 financial year the DEC Goldfields Region reserves attracted 166,000 visitors. Statistics indicate that a large proportion of visitors to the Region, around 89%, are domestic from interstate or within Western Australia. The desire for remote locations and outback experiences requires visitors to be well prepared, self-contained and equipped with appropriate camping gear.<sup>23</sup>

#### Predicted Visitation Increase

The Vistat Report notes that the trend for visitation to the Goldfields reserves has been a steady increase at popular reserves and constant visitation at remote reserves.<sup>24</sup> A 10% rise in visitation to the Region is predicted by 2012/2013.<sup>25</sup> A greater increase in visitors is anticipated if facilities are developed, marketed and promoted.

<sup>22</sup> CALM (2005) *Burringurrah Conservation Area – Recreation and Tourism Master Plan*, pg 1

<sup>23</sup> DEC (2009) *Inventory of Tourism Assets and Opportunities of DEC Rangeland Properties and the Goldfields Region of Western Australia*, pg 33-34

<sup>24</sup> DEC (2009) *Goldfields Region Visitor Statistics Report (VISTAT) 2008/09*, pg 23

<sup>25</sup> *Ibid.*, pg 24

Contributing factors include -

- Increased popularity of outback, cultural, nature based and eco tourism is resulting in more people travelling to remote areas.
- Mining development has improved access to remote areas and road sealing by Main Roads is enhancing existing access for caravans and 2WD vehicles.
- Promotion and information dissemination via websites, 4WD clubs and published articles - a larger number of 4WDs with campers and caravans are travelling throughout remote Western Australia.
- There appears to have been a small increase in the number of commercial tour operators venturing into the Goldfields outback offering tag-a-long 4WD tours and coach based trips.
- Self-drive adventures throughout the region increasingly attract 2WD visitors and 4WD clubs and enthusiasts. These include the *Golden Quest Discovery Trail (GQDT)* (2WD), *Golden Quest Green Trail (GQGT)* (2WD), *Golden Pipeline Drive Trail* (2WD), *Miners Pathway* (4WD), *Canning Stock Route* (4WD), *Gunbarrel Highway* (4WD), *Holland Track* (4WD) and *Granite and Woodlands Discovery Trail* (2WD).

#### *Goongarrie*

- Estimated annual visitation to Goongarrie homestead is 1400 people with projected visitation by 2012 reaching 2000 people.
- High recreation use relative to other Goldfields sites due to location (proximity to Kalgoorlie and GQDT), development and promotion.
- The trend is expected to increase as access to the homestead from the north is developed and signposted, further development of the site occurs, attractions such as the GQDT are expanded and promotion expands.

#### *Credo*

- Estimated annual visitation to Credo homestead is 1500 people with projected visitation by 2012 reaching 3000 people.
- High recreation use relative to other Goldfields sites due to proximity to Coolgardie and Kalgoorlie and nearby attractions such as Rowles Lagoon, the GQDT and GQGT.
- Visitation is expected to diversify and increase as conservation projects help to restore the ecosystem to a natural state and the homestead site is developed with full time caretakers in an expanded role. Promotion, marketing, developments around the Great Western Woodlands strategy and increased research and use of the field study centre will also contribute to increased visitor numbers.

#### Visitor Type

The visitor type to the Goldfields Region reserves varies. The reserves located within a 2 hour drive from Coolgardie and Kalgoorlie (such as Goongarrie and Credo) receive day visitors and weekend camping groups, while visitors to the former pastoral stations to the north are predominantly 4WD groups and outback tour operators, along with prospectors and fossickers.

#### *Goongarrie*

The Goongarrie homestead attracts group events, locals camping and people travelling along the Goldfields Highway. With only 1 hour travelling time, many people from Kalgoorlie day visit or camp at Goongarrie for the weekend. The facilities are ideal for groups or weekend functions. Tourists can visit for a rest stop or overnight camp and experience the old station buildings. The Vistat Report notes that "the use of seasonal campground hosts since 2002 has encouraged travellers and opportunistic visitors to stay and has increased camping revenue".<sup>26</sup>

#### *Credo*

Credo offers recreation activities and facilities for local day visitors, camping, historians and as a base for prospectors and 4WD tour groups. Visitors can stay at the homestead site for a rest stop or overnight camp

<sup>26</sup> DEC (2009) *Goldfields Region Visitor Statistics Report (VISTAT) 2008/09*, pg 28

and experience the old station buildings. Visitors include workshop groups, e.g. art groups, locals/family groups for weekend camping and travellers from Coolgardie North Road.

Nearby Rowles Lagoon caters for local camping groups and water skiers when water levels permit, although visitation has decreased in the past 5 years as the lagoon has dried out. Tourists from Coolgardie and Kalgoorlie can visit Rowles Lagoon for a nature based experience, especially bird watching and the unique wetland.

#### *Goongarrie and Credo*

Goongarrie and Credo are both located on the route of the popular self-drive *Golden Quest Discovery Trail* and receive passing trade/drive-by visitors looking for day use facilities or an overnight stop. The new *Golden Quest Green Trail* visits Rowles Lagoon near Credo homestead.

#### Methods of Travel and Demographic

A large proportion of visitors to the Region travel in small groups on self-contained 4WD outback trips/tours, however the advent of sealed roads in the Region has seen a noticeable increase in caravans, motor homes and larger vehicles accompanied by a shift in visitor demographic. Short term/express visits to key sites such as Lake Ballard are also becoming more common for people (predominantly tourists) visiting from regional centres and towns. Although the level of commercial tours offering coach based trips remains fairly low, it is possible that an increase in this type of travel will be seen as the sites develop to cater for them and road improvements continue.

It is possible that the new demographic of visitors may be less prepared or able to respond to the challenges of the landscape (remote, exposed, rugged terrain, climate, wet unsealed roads) and could potentially place themselves at greater risk, particularly when age and physical abilities are factored in.

#### *Goongarrie and Credo*

Visitors to Goongarrie and Credo reflect the travel methods and demographic of the Region in general, however currently there are a greater proportion of locals from Kalgoorlie/Coolgardie for group events and weekend camping due to the shorter travel times to these destinations.

#### Catering for Future Visitors

Although the majority of visitors to Goongarrie and Credo have traditionally been locals from Coolgardie and Kalgoorlie on camping weekends, outback tourism and the self-drive market are steadily gaining popularity. The increased range in visitor demographic, expectation and methods of travel accompanying the current tourism market translates to a growing demand for improved comfort, convenience, access, facilities and range of visitor experiences and activities. These factors, along with growing visitor numbers, are placing increasing pressure on DEC managed estate, recreation facilities and infrastructure.

Considering the expected demand for a spectrum of recreation and tourism facilities in the Region, it is essential that a solid framework and foundation be prepared to guide immediate and future development and management of recreation and tourism facilities and services. This is of particular importance for sites such as Goongarrie and Credo which are close to the major Regional centres of Kalgoorlie and Coolgardie and experience higher relative visitation.

## 7 ISSUES

Key issues for Goongarrie and Credo former stations (some of which have broader relevance throughout the Region) include -

- Sustainable maintenance of ageing homestead buildings and infrastructure.
- Provision of services such as power and water at homesteads and management of costs.
- Management of cultural heritage including structural integrity of ageing buildings while preventing the loss of outback/ historic appeal through inappropriate or over development.
- Management of staff and financial resource allocations to remote sites.
- Effective engagement, training and management of volunteer campground hosts and caretakers and provision of suitable accommodation and facilities.
- Joint management with local Aboriginal groups.
- Catering for predicted increases in visitor numbers.
- Management of uncontrolled camping.
- Management of both legal and illegal prospecting activity and associated camping and access.
- Management of vehicles in open landscape and environmental protection.
- Lack of definition to roads, parking areas and camp sites.
- Incremental maintenance, inconsistent use of materials and construction methods.
- Directional, orientation, interpretation signage, information, brochures and maps inadequate and /or inconsistent.
- Management of visitor risks and hazards
- Vistat data collected for sites needs to be reliable and accurate.

A summary of Key Issues and Key Actions is outlined in the Executive Summary. For further detail see following section 9 "Master Plan Development Directions and Recommendations".

## 8 OPPORTUNITIES AND CONSTRAINTS

### 8.1 Opportunities

Goongarrie and Credo both have high conservation and landscape values with rich and diverse flora and fauna, distinctive landscape elements and cultural heritage attractions. With many features of interest and attraction to a diverse range of recreationists and tourists, they bring exciting new recreation opportunities to the Region.

#### Goongarrie

- Excellent group venue for bush workshops, corporate camps, bush conferences, meetings, educational groups and school excursions (camps, bio-surveys and eco-education).
- Opportunity to make the homestead a bookings only accommodation node and establish new day use sites elsewhere, closer to the Goldfields Highway.
- Potential for tourism for 4WD clubs, astronomy clubs, bird watching and specific purpose groups.
- Homestead located 14km from *GQDT* route on Goldfields Highway, potential for links with existing drive trail products and regional tourism events.
- Self-drive adventures and outback tourism are becoming very popular.
- Historical and natural attractions provide ample interpretation opportunities – themes include Aboriginal, pioneer, mining, railway, pastoral, salt lakes/clay pans, woodlands, flora and fauna.
- Opportunities to form half day and full day drive circuits from the homestead visiting natural and historical attractions.

#### Credo

- Major links to the Great Western Woodlands and located within the GWW with considerable potential as a state, national and international field study centre for GWW research and research based use, development and study sites.
- Potential to be developed as a group venue for bush workshops, corporate camps, conferences, meetings, educational groups and school excursions (camps, bio-surveys).
- The recently retired Shearing Shed has potential to be developed as the homestead day use area with interpretation and an interpretive walk trail through the surrounding stock yards.
- Potential for tourism for 4WD clubs, prospecting groups, bird watching groups.
- Homestead precinct is located on route of *GQDT* and *GQGT*, potential for links with existing drive trail products and regional tourism events.
- Self-drive adventures and outback tourism are becoming very popular.
- Opportunity to link Rowles Lagoon, a wetland attraction and developed day use area with water skiing and bird watching facilities, to nearby Credo homestead.
- Historical and natural attractions provide ample interpretation opportunities – themes include Aboriginal, pioneer, mining, wood lines, pastoral, wetland/catchment, woodlands/flora, fauna.
- Opportunities to link attractions to form half day and full day drive circuits from the homestead with interpretation themes such as woodlands, wood lines, mining history, pastoral history and wetlands.
- Due to its proximity to Coolgardie, Kalgoorlie, Rowles Lagoon, location on *GQDT* and *GQGT* routes, station history and attractions, Credo is considered to have potential for a Commercial Tour Operator licence/lease.
- Aboriginal joint management opportunities and indigenous tourism products potential.

#### Link between Goongarrie and Credo

A portion of the historic Gus Luck Track passes through Goongarrie and Credo following what is thought to be an old stage coach route. The track from Southern Cross passes via Yellowdine, Darrine and Jaurdi to a point along Coolgardie North Road between Credo and Davyhurst. Beyond this point there is conjecture regarding the remaining route and final destination; several alternatives including through Wangine Soak, Siberia to Goongarrie and Menzies have been proposed over the years.

There is an opportunity to incorporate Credo and Goongarrie homesteads into this historic route by creating a detour to Credo homestead and Rowles Lagoon, then rejoining the track at Callion or Siberia, continuing to Goongarrie homestead and linking back to the Goldfields Hwy at Goongarrie abandoned town site.

Further research is required to determine suitable 4WD tracks and the historic alignment of the Gus Luck Track. The primary aim is to create a strong link between the two homesteads. Visitors would need to be experienced with 4WD touring and highly self-sufficient.

Links to DEC managed recreation sites:

The expansion of the reserves system in the western half of the Goldfields has created a network of DEC managed reserves providing valuable conservation estate and new recreation opportunities.

There are opportunities throughout this area to develop a range of 4WD circuits of varying duration strengthening links between DEC managed reserves and recreation sites. A number of circuit themes could be promoted including granite and woodlands, mining history (including wood lines), pastoral history/homesteads and wetland/catchment. Goongarrie and Credo homesteads could be incorporated into the circuits as overnight stops.

Possible sites nearer to Goongarrie and Credo which could be linked by drive circuits include Wallaroo Rock Conservation Park (CP), Jaurdi former station (proposed CP) and homestead and Goongarrie National Park (NP). Further afield are Cave Hill, Burra Rock, Victoria Rock, Boondi Rock, Boorabbin NP, the existing and proposed Goldfields Woodlands NP and CP, Mt Manning Nature Reserve and CP and Mt Elvire proposed CP.

Links to the Great Western Woodlands strategy

Due to accessibility and the diverse range of vegetation types found at Credo, the homestead precinct is considered a favourable location for a field study centre for Great Western Woodlands research staff.

In accordance with the Great Western Woodlands strategy<sup>27</sup>, there are opportunities to promote the Great Western Woodlands as a distinct area with high conservation values worthy of protection. This could occur around Credo generally and through operations at the proposed field study centre.

Refer to the GWW strategy for further detail.

## **8.2 Constraints**

- High capital costs to upgrade or construct facilities in remote areas.
- DEC Goldfields Region has limited staff and financial resources for management and maintenance.
- Long travel distances to recreation sites in remote areas make management challenging.
- Old homestead buildings require constant maintenance which is expensive and time consuming.
- Tourist expectations of accommodation standards may not correspond with what is on offer at the homesteads.
- The 4WD/outback culture can generate an expectation (for some visitors) of unrestricted vehicle access and the freedom to drive right up to an attraction or camp almost anywhere.
- Lack of accurate and reliable visitor statistics data creates uncertainty in the planning and site design process.
- Limits of catering for changing demographics and implications for providing facilities are yet to be investigated.
- Visitor risks and hazards are numerous and in remote locations.
- Protection of cultural heritage.

---

<sup>27</sup> DEC (2010) *A Biodiversity and Cultural Conservation Strategy for the Great Western Woodlands*, pg 24-29

## 9 RECOMMENDATIONS

### 9.1 Recreation Zones

A series of planning zones are proposed that radiate from each of the homestead precincts and offer a differing concentration of visitor experience, level of facilities and management. The proposed zoning is represented in **Drawing 2 "Recreation Zones"**.

In Zone A, the homestead precincts at Goongarrie and Credo are proposed as primary visitor nodes with a concentration of accommodation and associated facilities to cater for visitors and events. Management presence will be provided by seasonal campground hosts at Goongarrie and caretakers at Credo.

Zone B, the next zone beyond the homestead precinct, is proposed to provide access to an additional range of activities and attractions which are not available at the homestead precinct. The focus is on short drives to key locations for day use to give visitors the opportunity to get out of their vehicles and experience the landscape and cultural features first hand. It is anticipated that attractions in this zone can be visited during a half-day trip outing from the homestead.

Zone C, the broadest zone, is intended for visitors to explore in 4WD with the aid of GPS technology and detailed maps with minimal facilities and management requirements. Visitors will experience the outback remoteness and authentic historical sites with minimal/no suggestion of present day living. It is expected that visitors will need a full day out from the homestead to explore tracks in this zone.

Recreation experiences for the remainder of the former stations have not been proposed in this master plan, as the initial priority has been to concentrate facilities in accessible areas which are visited regularly by the public within a reasonable range for management. Future planning proposals may investigate options to develop recreation sites in remote parts of the former stations however this is expected to be some years away and beyond the scope of this master planning exercise.

### 9.2 Directions for Zones

#### Zone A: Homestead Precinct

##### *Goongarrie*

At Goongarrie homestead precinct visitors will experience a taste of former station life in the outback. The appealing authentic character and history of the old homestead buildings and the informal relaxed ambience will be maintained for visitors to explore and enjoy in their own time. Interpretation will be provided to allow visitors the opportunity to learn about the history of station operations and land use, and to provide glimpses of past pioneering and gold rush days in the area.

The homestead precinct buildings will provide accommodation and the machinery shed an outdoor venue for workshops and events. Vehicle based camping will be upgraded to cater for increasing numbers of visitors.

The homestead precinct walk trails will provide an opportunity to enjoy the cultural heritage, wide open spaces and sense of remoteness and isolation at Goongarrie first hand. A short drive from the homestead precinct visitors will find historic sites and experience areas of high scenic value in the surrounding area with salt lakes, clay pans and eucalypt and acacia woodlands.

##### *Credo*

Credo homestead precinct also gives visitors a taste of former station life, although from a more recent time period and in a contrasting setting to Goongarrie. Surrounded by spectacular eucalypt woodlands visitors will be able to enjoy the peaceful, quiet atmosphere at Credo with opportunities to explore the old station buildings including a recently retired shearing shed. Interpretation will provide stories of the station's pastoral history and its future conservation as part of the GWW.

A day use area and interpretation node will be developed around the old shearing shed, and vehicle based camping provided within walking distance of the homestead. A proposed field study centre for GWW research will also be located in the homestead precinct.



Through the development of walk trails visitors will be able to enjoy the high scenic values in the surrounding area which include a variety of vegetation types, predominantly eucalypt woodlands and an extensive wetland system featuring Rowles Lagoon. Historic attractions and towns such as Ora Banda and Siberia are a short drive from the homestead.

Refer to **Drawing 5** "Goongarrie Homestead Precinct" and **Drawing 6** "Credo Homestead Precinct" for Zone A recommendations.

Item	Issue	Recommendation	Location
A1	<ul style="list-style-type: none"> <li>Accommodation buildings are old and basic</li> </ul>	<ul style="list-style-type: none"> <li>Maintain buildings for campers, educational and group opportunities and staff as required</li> <li>Manage visitor expectations in relation to accommodation standard with up to date pre-visit information</li> </ul>	Goongarrie & Credo
A2	<ul style="list-style-type: none"> <li>There is no designated day use area, visitors end up using camp facilities</li> </ul>	<ul style="list-style-type: none"> <li>Undertake site planning and design, separate day use and camping facilities, provide day use facilities at and around the Shearing Shed (following repairs)</li> </ul>	Credo
A3	<ul style="list-style-type: none"> <li>Day use is limited due to distance off Goldfields Hwy and there is no designated day use area</li> </ul>	<ul style="list-style-type: none"> <li>Undertake site planning and design, separate day use and camping facilities, investigate suitable day use sites around the homestead precinct, or</li> <li>Consider removing day use facilities altogether and develop the homestead precinct for overnight camping and as a camp/venue for groups and event and investigate alternative day use sites closer to the Goldfields Hwy</li> </ul>	Goongarrie
A4	<ul style="list-style-type: none"> <li>Insufficient definition to roads, parking areas and camp sites is causing vegetation damage and soil compaction</li> <li>Management of 4WD vehicles in open landscape is difficult</li> </ul>	<ul style="list-style-type: none"> <li>Address through site design</li> <li>Provide definition to roads, parking areas and camp sites to assist with managing vehicles and protection of vegetation</li> </ul>	Goongarrie & Credo
A5	<ul style="list-style-type: none"> <li>Vehicle based campground facilities/sites are insufficient and not separated from day use and homestead building facilities</li> </ul>	<ul style="list-style-type: none"> <li>Provide campground facilities in a designated vehicle based camping area</li> <li>Investigate upgrading or providing new camping loops</li> </ul>	Goongarrie & Credo
A6	<ul style="list-style-type: none"> <li>Increasing numbers of visitors and a greater proportion of caravans, camp trailers and motor homes</li> </ul>	<ul style="list-style-type: none"> <li>Expand the social research and RECDATA program to better understand future visitation trends</li> <li>Cater for long vehicles in site design</li> </ul>	Goongarrie & Credo
A7	<ul style="list-style-type: none"> <li>Antisocial behaviour can occur, generally local campers from nearby towns</li> </ul>	<ul style="list-style-type: none"> <li>Investigate compatibility of visitor types</li> <li>Address through site design</li> <li>Maintain management presence</li> </ul>	Goongarrie & Credo
A8	<ul style="list-style-type: none"> <li>Campground hosts use facilities at Sandalwood Camp making it unavailable for visitors</li> </ul>	<ul style="list-style-type: none"> <li>Provide a designated area for campground host accommodation with private, comfortable facilities, in a location which is conducive to the role of the hosts</li> </ul>	Goongarrie
A9	<ul style="list-style-type: none"> <li>Homestead, occupied by full time caretakers, needs upgrading to acceptable standards and additions to cater for caretakers, DEC staff and researchers</li> </ul>	<ul style="list-style-type: none"> <li>Maintain and upgrade the homestead within heritage guidelines</li> <li>Plan additional facilities to cater for staff, research and caretaker accommodation and provide research facilities (field study centre) on site to meet GWW strategies and opportunities</li> </ul>	Credo

A10	<ul style="list-style-type: none"> <li>Provision of power and water at homestead sites is costly to the Department</li> </ul>	<ul style="list-style-type: none"> <li>Manage power and water services so that costs are sustainable</li> <li>Ensure homestead precinct brochures clearly define facilities and services available to visitors</li> </ul>	Goongarrie & Credo
A11	<ul style="list-style-type: none"> <li>The ageing homestead precinct buildings require constant maintenance which is demanding of limited staff and financial resources</li> <li>Limited resources and high capital costs of construction in remote areas have lead to an incremental approach to site development and maintenance</li> </ul>	<ul style="list-style-type: none"> <li>Undertake planning to identify priorities and staging for works, as set out in this document</li> <li>Apply for adequate capital funding and special grant applications and include ongoing maintenance items in capital works program</li> <li>Allocate adequate staff resources to works projects and ongoing maintenance</li> <li>Conduct regular assessments to assist with planning resource allocations</li> <li>Engage volunteers where possible to supplement Departmental resources</li> </ul>	Goongarrie & Credo
A12	<ul style="list-style-type: none"> <li>Quality of site presentation is impacted by a mixture of building styles and materials</li> </ul>	<ul style="list-style-type: none"> <li>Develop a range of standard materials and constructions details to improve consistency</li> <li>Ensure high quality materials, workmanship and compliance with standards</li> </ul>	Goongarrie & Credo
A13	<ul style="list-style-type: none"> <li>Visitor risks associated with historic relics, old machinery parts and ageing buildings eg. asbestos, structural stability</li> </ul>	<ul style="list-style-type: none"> <li>Manage visitor risks through regular assessments including building structures</li> <li>Address visitor risk management in site design</li> <li>Remove rubbish and debris</li> </ul>	Goongarrie & Credo
A14	<ul style="list-style-type: none"> <li>Inappropriate or over development could result in a loss of character and outback/historic appeal</li> </ul>	<ul style="list-style-type: none"> <li>Protect cultural heritage through careful and appropriate site design and interpretation</li> </ul>	Goongarrie & Credo
A15	<ul style="list-style-type: none"> <li>Limited recreation opportunities and activities around the homestead precinct</li> </ul>	<ul style="list-style-type: none"> <li>Investigate opportunities for additional interpretive walk and cycle trails around the homestead precincts</li> <li>Consider additional activities such as astronomy nights, art workshops, bird watching and eco-tourism and eco-education</li> <li>Investigate possible links with drive trail products and regional tourism events</li> </ul>	Goongarrie & Credo
A16	<ul style="list-style-type: none"> <li>Existing facilities do not cater for wheelchair access</li> </ul>	<ul style="list-style-type: none"> <li>Provide appropriate levels of access for people with disabilities</li> </ul>	Goongarrie & Credo
A17	<ul style="list-style-type: none"> <li>Lack of visitor information, orientation and interpretive signage, pre-visit maps, brochures, online bookings and website information.</li> </ul>	<ul style="list-style-type: none"> <li>Develop a visitor communication plan</li> <li>Provide up to date information on DEC website including details of recreation sites, activities, events, 4WD trail locations and 'Access for More' sites for visitors with disabilities</li> <li>Investigate on-line booking system to better manage visitor groups and campers</li> </ul>	Goongarrie & Credo

#### Zone B: Half day trip – Recreation sites and short drive circuit

##### *Goongarrie*

Within a short drive from the homestead (Zone B) visitors can explore a number of historic attractions around Goongarrie and Comet Vale abandoned town sties, and experience natural features such as Lake Goongarrie salt lake, Comet Vale hills and eucalypt woodlands.

New recreation sites and activities have been proposed for this zone, including a potential day use area (relocated from Goongarrie homestead) and interpretive historic and nature based walk trails.

It is proposed that the existing and proposed sites be incorporated into a self-guided short drive circuit from the homestead with interpretation at key features and the proposed day use area doubling as a rest stop for Goldfields Highway traffic. Visitors will be able to enjoy a half-day outing from the homestead with opportunities for walks and to learn about the local history and landscape values.

#### *Credo*

Within a short drive from the homestead (Zone B) visitors can experience a number of wetland/catchment and natural features such as Rowles Lagoon, Clear and Muddy Lakes, Carnage Lake, Canegrass Lagoon and unique eucalypt woodlands. Rowles Lagoon is a popular recreation site offering activities such as bird-watching, camping and water skiing when water levels permit. There are also nearby 4WD tracks accessing surrounding areas of high scenic value.

New recreation sites and activities have been proposed for this zone, including a minor day use area at Rowles Lagoon with access to bird-watching areas and a walk/cycle trail link between Rowles Lagoon and the homestead precinct.

It is proposed that the existing and proposed sites be incorporated into a self-guided short 4WD circuit with interpretation at key features, linking a range of activities and attractions which are not available at the homestead precinct. Visitors will be able to enjoy a half-day outing from the homestead with opportunities for walks, recreation activities, picnicking, 4WD trails through parts of the former station and to learn about the local history, wetlands and landscape values.

Refer to **Drawing 3 "Goongarrie Master Plan"** and **Drawing 4 "Credo Master Plan"** for Zone B recommendations.

Item	Issue	Recommendation	Location
B1	<ul style="list-style-type: none"> <li>Limited recreation opportunities within short range of the homestead</li> </ul>	<ul style="list-style-type: none"> <li>Investigate opportunities for new recreation sites and activities within Zone B</li> <li>Provide appropriate levels of access for people with disabilities</li> </ul>	Goongarrie & Credo
		<ul style="list-style-type: none"> <li>Consider lookout at Goongarrie Hill with views over the salt lake and clay pans</li> <li>Investigate a short self-guided history walk around the old Goongarrie town site</li> </ul>	Goongarrie
		<ul style="list-style-type: none"> <li>Investigate interpretive walk/cycle trail between homestead and Rowles Lagoon</li> <li>Investigate additional day use areas and bush camping sites</li> </ul>	Credo
B2	<ul style="list-style-type: none"> <li>No day use stops along Goongarrie section of Goldfields Hwy, or recreation access to Lake Goongarrie</li> </ul>	<ul style="list-style-type: none"> <li>Investigate locations for a day use site between the Goldfields Highway and Lake Goongarrie with views of the lake and a lake side walk; near the Goongarrie town site or in the Comet Vale area</li> </ul>	Goongarrie
B3	<ul style="list-style-type: none"> <li>No formalised links between attractions and limited/no interpretation provided</li> </ul>	<ul style="list-style-type: none"> <li>Incorporate attractions into half-day drive circuit with interpretation stops</li> <li>Provide entry station information bays near highway turn-offs</li> </ul>	Goongarrie & Credo
B4	<ul style="list-style-type: none"> <li>Little reference to Aboriginal history and culture</li> </ul>	<ul style="list-style-type: none"> <li>Investigate opportunities for Aboriginal cultural stories to be interpreted in liaison with local Aboriginal groups</li> </ul>	Goongarrie & Credo
B5	<ul style="list-style-type: none"> <li>Visitor risks associated with past land use activities - mining/exploration/pastoral</li> </ul>	<ul style="list-style-type: none"> <li>Assess visitor risks at proposed sites and manage in accordance with DEC policy and</li> </ul>	Goongarrie & Credo

		Goldfields Region strategies	
B6	<ul style="list-style-type: none"> <li>User conflicts exist between passive recreation use including bird watchers and water skiers at Rowles Lagoon</li> </ul>	<ul style="list-style-type: none"> <li>Investigate alternative bird watching sites and/or separating facilities and sites for active and passive use</li> <li>Review water skiing and power boat use in accordance with management plan<sup>28</sup></li> </ul> <p><i>Note: Refer <b>Appendix C</b> for 2003 Rowles Lagoon Master Plan</i></p>	Credo
B7	<ul style="list-style-type: none"> <li>Antisocial behaviour and off road vehicle use at Rowles Lagoon</li> </ul>	<ul style="list-style-type: none"> <li>Address through site design and increased management presence</li> </ul>	Credo
B8	<ul style="list-style-type: none"> <li>Land use activities such as mining and exploration may conflict with recreation proposals</li> </ul>	<ul style="list-style-type: none"> <li>Confirm current and proposed land use activities and plan and design to avoid potential conflict</li> </ul>	Goongarrie & Credo
B9	<ul style="list-style-type: none"> <li>T junctions at turn-offs to homesteads from main roads are currently unsafe</li> </ul>	<ul style="list-style-type: none"> <li>Undertake road works to provide safe access in consultation with Main Roads and local Shires, upgrade highway signage</li> </ul>	Goongarrie & Credo
B10	<ul style="list-style-type: none"> <li>Aboriginal traditional owners would like joint management involvement and a bush camp site near Clear and Muddy Lakes NR</li> </ul>	<ul style="list-style-type: none"> <li>Facilitate advancement of joint management process</li> <li>Investigate bush camp sites and determine appropriateness with the management plan</li> </ul>	Credo

#### Zone C: Full day trip - 4WD circuit

##### *Goongarrie*

Visitors can experience the outback remoteness and scenic values in the Goongarrie reserves and surrounding area exploring existing 4WD tracks which traverse the varied landscape encountering occasional remote historic sites.

Features include historic sites (Deadman's Soak and a lonely grave) at Goongarrie National Park, salt lakes and clay pans along Pianto Road, the historic causeway at Lake Goongarrie, subtle changes in vegetation complexes and a variety of eucalypt woodlands.

It is proposed that a 4WD circuit be identified that can be completed during a day outing from the homestead precinct. To maintain the remote experience and because there are numerous opportunities for 4WD exploring in the Goldfields, DEC will not actively promote the circuit and the current track classification will be maintained. Locations of features could be noted on Goongarrie brochure maps, leaving visitors to determine their own travel route via existing designated tracks. This zone would remain largely undeveloped creating a journey into the past with little or no suggestion of present day living, intended for adventurous visitors who want to spend time exploring the area with the aid of GPS technology or detailed maps.

##### *Credo*

Visitors can experience the outback remoteness, scenic values, cultural and landscape heritage in the Credo reserves and surrounding area by exploring the existing network of 4WD tracks accessible from the homestead precinct.

Numerous historical and natural features are located throughout the area including possible sections of the historic Gus Luck Track, wells, soaks and rock holes, granite rock outcrops, mines, wood lines, dams, woodlands, a diverse range of vegetation types and wetland-catchment features.

It is proposed that several 4WD circuits be identified, each with a distinct interpretation theme, forming a range of 4WD day trip options out from the homestead. To maintain the remote experience, DEC will not

<sup>28</sup> DEC (2000) *Rowles Lagoon Conservation Park and Clear and Muddy Lakes Nature Reserve Management Plan 2000-2010*, pg 22-23

actively promote the circuit and the current track classification will be maintained. Circuit routes and features could be noted on Credo brochure maps, with estimated times and track classifications, leaving visitors to determine their own itinerary via existing designated tracks. From a recreation perspective, this zone could remain largely undeveloped with minimal facilities, intended for adventurous visitors who want to spend time exploring the area.

Conceptual trail circuits have been identified on **Drawing 2 "Recreation Zones"**. These trails need further refinement.

Item	Issue	Recommendation	Location
C1	<ul style="list-style-type: none"> <li>No formalised links between attractions and limited or no interpretation provided</li> </ul>	<ul style="list-style-type: none"> <li>Incorporate attractions into 4WD drive circuits with interpretation stops</li> </ul>	Goongarrie & Credo
		<ul style="list-style-type: none"> <li>Investigate 4WD trail routes</li> <li>Create 4WD trail routes with distinct interpretation themes e.g. historical, pastoral, mining, wood lines, woodlands, vegetation communities and wetland-catchment</li> </ul>	Credo and Goongarrie
		<ul style="list-style-type: none"> <li>Co-ordinate development of 4WD trail network with 4WD clubs, Track Care WA and 4WD commercial tour operators. Select routes to complement existing 4WD trail network, e.g. "4WD Days in the Eastern Goldfields" and 2WD/4WD self-drive trails</li> </ul>	Credo and Goongarrie
C2	<ul style="list-style-type: none"> <li>Limited staff and financial resources and long travel distances mean that management visits to remote sites are infrequent</li> </ul>	<ul style="list-style-type: none"> <li>Provide minimal recreation infrastructure to reduce maintenance demands</li> <li>Develop partnerships with Traditional Owners and encourage joint management initiatives</li> </ul>	Goongarrie & Credo
C3	<ul style="list-style-type: none"> <li>Some visitors might feel that built structures in remote destinations detracts from the experience</li> </ul>	<ul style="list-style-type: none"> <li>Investigate alternative media for providing interpretation, e.g. electronic formats to correspond with GPS waypoints, 4WD trail brochure or trail CD/notes (hire from homestead)</li> </ul>	Goongarrie & Credo
C4	<ul style="list-style-type: none"> <li>Remote areas present greater risks to visitor safety including rugged, exposed landscapes and changeable road conditions</li> </ul>	<ul style="list-style-type: none"> <li>Manage visitor risk in accordance with DEC policy and Goldfields Region strategies</li> <li>Provide road condition updates, detailed information and quality maps to ensure visitors are well prepared</li> </ul>	Goongarrie & Credo
C5	<ul style="list-style-type: none"> <li>Remote roads and tracks are generally not well sign posted</li> </ul>	<ul style="list-style-type: none"> <li>Provide essential directional signs at key intersections</li> </ul>	Goongarrie & Credo
C6	<ul style="list-style-type: none"> <li>Due to the prevalence and remoteness of hazards and visitor risks, e.g. mine shafts and wells, installing warning signs at each location is impractical</li> </ul>	<ul style="list-style-type: none"> <li>Assess visitor risks at proposed sites and manage in accordance with DEC policy</li> <li>Develop strategies for managing risk situations specific to the Goldfields Region</li> </ul>	Goongarrie & Credo

### 9.3 Activities and Facilities

#### Vehicular access

Road maintenance is a costly, on-going commitment in the Goldfields Region. At the former stations the standard of maintenance and delineation of roads and tracks is variable. Unmarked junctions, diversions, a lack of maps and loss of track definition cause confusion and could result in safety risks to unprepared visitors.

*The aim is to maintain a road system to feature sites to a standard suited to visitor and staff needs, manage risks and provide detailed and up to date road information.*

### Recommendations

- 2WD access – Unsealed road access to homestead precincts and developed recreation sites in Zone B to be maintained at 2WD grade.
- 4WD access – 4WD day circuits will consist of unmaintained tracks and maintained DEC management tracks. Identify circuit routes and interpretation stops and install essential signing at key road junctions and hazard areas.
- Improve highway signage at main T-junctions to homesteads and provide entry station information bays on access roads (close to highway) for visitor orientation.
- Discuss planning proposals for 4WD circuit routes with 4WD groups such as Track Care WA, WA 4WD Association and commercial tour operators in the area. Link in with existing circuits and co-ordinate maps and publications.
- Provide updates on road conditions at accommodation nodes and as required.
- Ensure visitor communications include information on track classifications and notes on trip preparation, planning and safe travel.
- Close and rehabilitate existing tracks that are not required for visitor access or management purposes, particularly in Zones A and B.
- Consider ongoing track safety monitoring, obtain additional feedback from hosts, visitors and tour operators.

### Camping facilities

A lack of camp site definition at homestead sites is causing soil compaction and damage to vegetation. Increasing numbers of visitors have caravans, motor homes and camp trailers. When weekend functions or events occur there is a lack of space for parking and camping, limited sites for groups and a lack of organisation. Antisocial behaviour is occurring at homestead sites (normally locals from nearby towns on camping weekends). Uncontrolled camping is occurring at locations beyond the homestead precincts.

*The aim of improving or providing new campgrounds is to satisfy environmental protection, demands for a variety of sites and to cater for peak periods with overflow camp sites. Defined, numbered sites will assist with implementation of a booking system.*

### Recommendations

- Provide defined group and individual sites, catering for long vehicles. Develop design guidelines and standard details to define sites and use consistently.
- Provide basic facilities including circulation paths, information, toilets and kitchen/BBQ in accordance with DEC design standards.
- Provide additional camping loops which can be opened during peak periods.
- Provide remote bush camping with limited facilities and walk tracks as required
- Use site design to manage antisocial behaviour; minimise opportunistic vandalism, provide well spaced sites and separate loops for group camping. Ensure high standard of site presentation to set the desired tone for the site and maintain management presence.
- Engage campground hosts to provide supervision and assist with management of antisocial behaviour.
- Determine a booking system to better manage visitor groups and campers, investigate on-line options. A booking system may reduce the occurrence of antisocial behaviour often linked with opportunistic visitors.
- Prohibit camping outside designated areas. Consider management strategies to address uncontrolled camping occurring on DEC managed estate outside designated recreation sites. Increase staff monitoring and reporting of activities. Where pressure points occur, consider providing campground facilities at the locations in question or at a suitable site nearby.

### Camp fires

Camp fires are no longer an essential requirement for bush camping as visitors to remote parks carry gas cookers, however camp fires remain an important social focal point.

Collection of dead and dying vegetation in natural environments removes an important component of the overall ecology which provides habitat for native animals. Damage to standing vegetation and lack of ground wood in and around designated campgrounds is the inevitable result where fire wood gathering occurs.

*The objective is to generally restrict and manage open camp fires to reduce the risk of bushfires and minimise vegetation damage caused by fire wood collection, while providing an opportunity for visitors to enjoy the experience of gathering around a camp fire in a supervised location.*

### Recommendations

- Design communal camp fires into designated campground locations where firewood is supplied and then only in designated fireplaces, i.e. within homestead precincts at camp kitchen locations.
- Consider supervision or lighting of communal fire by campground hosts at agreed times in suitable conditions, inform visitors on arrival.
- Discourage the use of fires as part of the visitor communication plan.

### Campground Host accommodation

Campground hosts make a valuable contribution to site management providing supervision, information to visitors, assisting with visitor management, reporting visitor risks, increasing security, maintaining facilities and collecting camping fees and visitor feedback. Provision of suitable accommodation with private, comfortable facilities is important for morale and retention in these positions.

At Goongarrie, host accommodation is currently at the Sandalwood Camp making it unavailable for visitors. The site does not cater for the needs of self contained campground hosts. There are currently no campground hosts posted at Credo.

*The aim is to provide a designated area for campground host accommodation with private, comfortable facilities, in a location which is conducive to the role of the hosts.*

### Recommendations

- Determine a suitable location for campground host accommodation within the homestead precinct, which is convenient for duties such as providing information to visitors, supervision and maintenance of facilities as part of the site planning process.
- Provide facilities for hosts which are comfortable and allow privacy.

### Caretaker accommodation

Caretakers assist with site management, providing information to visitors and maintenance of facilities. Provision of suitable accommodation with private comfortable facilities is important for morale and retention in these positions.

At Credo, the full-time resident caretakers occupy the homestead building which is also available to DEC staff and researchers; this arrangement is expected to continue into the future. Caretakers sometimes prefer an on-site caravan for accommodation, using the homestead facilities for convenience. There are no caretakers at Goongarrie.

*The aim is to develop a designated area for caretaker accommodation with private, comfortable facilities, which is compatible with long term planning for staff accommodation.*

#### Recommendations

- Provide a designated area for caretaker accommodation which is compatible with long term planning for staff accommodation and field study centre plans. Consider long term use of homestead building.
- Review homestead building facilities and upgrade accommodation for DEC staff and caretakers as required.

#### Field Study Centre

A field study centre and accommodation facilities have been proposed at Credo as part of the Great Western Woodlands Strategy. The field study centre will provide an opportunity to promote the GWW as a distinct area with high conservation values worthy of protection in accordance with the GWW strategy.<sup>29</sup>

*The aim is to develop a field study centre with research and staff accommodation facilities, which promotes GWW values.*

#### Recommendations

- Investigate suitable locations for the field study centre at Credo.
- Consider long term planning for staff, research and caretaker accommodation.
- Plan, design and construct a GWW field study centre and expand associated accommodation.

#### Homestead precinct facilities and maintenance

Ageing homestead buildings require constant care and maintenance and are demanding of limited staff and financial resources. The high capital costs of construction in remote areas have led to an incremental approach to site development and maintenance. The standard of the homestead accommodation buildings is very basic, with rudimentary furniture and bedding which may not meet with visitor expectations.

Provision of power and water services at homestead sites is costly to the Department. Unmanaged caravan access to power at Credo has resulted in expensive bills for the hybrid solar diesel generator.

*The aim is to maintain basic homestead precinct facilities for visitors and staff where applicable, meet visitor expectations and develop sustainable strategies for maintaining homestead buildings and infrastructure.*

#### Recommendations

- Apply for adequate capital funding applications and include ongoing maintenance items in capital works program.
- Allocate adequate staff resources to works projects and ongoing maintenance.
- Conduct regular assessments to assist with planning resource allocations.
- Ensure high quality workmanship and materials for maintenance work undertaken, and compliance with standards and heritage guidelines.
- Engage volunteers where possible to supplement Departmental resources.
- Develop sustainable strategies for providing power and water services at former stations.
- Review rules for allowing caravans access to power at homesteads and pass-on costs to visitors as required.
- Manage visitor expectations; ensure pre-visit homestead information clearly define facilities, standards and services available to visitors.
- Determine a booking system to better manage visitor groups and campers, investigate on-line options.

#### Day use areas

Designated day use areas are currently not provided at the homestead precincts and day visitors are sharing facilities with campers. Facilities do not cater for visitor needs and do not meet required standards. Beyond homestead precincts, additional day use sites and activities would improve visitor experience.

---

<sup>29</sup> DEC (2010) *A Biodiversity and Cultural Conservation Strategy for the Great Western Woodlands*, pg 24-29



*The aim is to provide high quality day use facilities that cater for a range of visitor needs, separate from camping facilities, and to provide additional activities to improve visitor experience and understanding of the landscape and cultural values.*

#### Recommendations

- Separate day use areas from camping facilities to minimise potential user conflicts and investigate new sites if required.
- Investigate suitable sites for additional day use facilities and activities catering for a range of visitor needs.
- Provide high quality day use facilities; include facilities such as defined parking areas with collector paths (class 2), picnic tables, toilets and interpretation in accordance with DEC design standards.
- Consider standard details for furniture such as bollards, wheel stops, picnic tables, sign structures and fencing to be used consistently at all recreation sites.
- Provide bush walking track (class 4) beyond main recreation site with interpretation as required.
- Provide appropriate levels of access for people with disabilities to facilities including allocated parking bays, toilet facilities, picnic area, information display and site feature where practical.

#### Small structures

Existing small structures such as information shelters, picnic tables, shelters, camp kitchens, barbecues, toilets and ablutions are an ad hoc collection of designs and materials, not meeting DEC design standards.

*The aim is to provide a standard range of high quality structures for use at camping and day use sites, which have an aesthetic in keeping with the cultural heritage and character of the homestead precincts.*

#### Recommendations

- Consider appropriate materials and standard construction details.
- In consultation with DEC Recreation and Landscape Unit, establish a range of standard small structures for use at Goongarrie and Credo.
- Develop a sensitive approach to building alongside historic elements while preventing the loss of outback/historic appeal through inappropriate or over development.

#### Walk trails

There is a need for a range of new walk trails to suit visitor needs and enhance visitor experience at the homestead precincts and nearby recreation sites. Existing homestead tracks between facilities are undefined leading to vegetation damage. Parking areas at the homesteads are also undefined and do not have collector paths for pedestrians which is a visitor safety issue. At homestead precincts, recreation sites and rest stops facilities are limited; there are opportunities to improve the range of interpretive walk trails on offer.

*The aim is to provide a range of walking opportunities to suit diverse visitor preferences and fitness levels, address visitor safety issues and protect natural vegetation. In response to the Healthy Parks Healthy People initiative aim to encourage walking by providing a walk trail at every recreation/rest stop, giving visitors a chance to exercise after long hours of driving.*

#### Recommendations

- Provide defined circulation paths between facilities at homesteads. Install temporary fencing as an interim measure to allow vegetation to regenerate.
- Install collector paths with all new parking areas.
- Consider the level of accessibility in accordance with the Walking Track Classification system.
- Assess opportunities for new interpretive walking tracks to provide a broad spectrum of experiences and cater for a range of visitor fitness levels.
- Establish walk trail classification in relation to visitor management setting.

### Cycle tracks

Cycling is an additional (and increasingly popular) recreation activity which is currently not provided for at the homestead precincts. It is a great way for visitors to explore the landscape and increasing numbers of visitors have bikes with them. There are opportunities to develop cycle tracks as the ground surface is suitably hard in dry conditions.

*The aim is to provide a range of cycling opportunities to suit diverse visitor preferences and fitness levels, to enhance visitor experience and enjoyment.*

### Recommendations

- Assess opportunities for cycling tracks at the homestead precincts and links to nearby features, with the aim to provide a broad spectrum of experiences for visitors.
- Consider sharing trails to create dual use interpretive paths for walking and cycling.
- Establish cycle trail classification in relation to visitor management setting.

### Visitor Risk Management

Travel in the Goldfields poses significant visitor risks due to climate, remote rugged exposed landscape, minimal management presence, long distance from support services, unreliable communications, unmarked road junctions, unmaintained/undefined tracks, unpredictable seasonal weather, changeable road conditions, bushfire and hazards such as mines shafts, quarries, wells and mining/exploration activity. Cultural heritage in the form of historic relics, artefacts and dilapidated structures around homesteads is a key visitor attraction, however also a risk to visitor safety.

Due to the prevalence and remoteness of potential risks, attempting to warn visitors with 'Hazard' signs at the site of every risk is impractical.

*The aim is to develop a consistent approach to managing visitor risks using methods which do not detract from landscape and cultural values and are practical from a management/maintenance perspective.*

### Recommendations

- Adopt DEC policy and develop strategies for managing risk e.g. mine shafts and wells. Liaise with other agencies and tourism industry groups to ensure visitors are receiving consistent messages regarding visitor risks.
- Conduct on-going visitor risk assessments including structural assessments of buildings. Encourage reporting of risks by public, volunteers, campground hosts, caretakers, tour operators etc.
- Manage visitor risks through site design and on-ground management of facilities and visitors with the aid of campground hosts.
- Install interpretation and signage to highlight visitor risks and hazards as required.
- Provide essential signing at key road junctions and hazard areas.
- Provide updates on road conditions at accommodation nodes and as required.
- Ensure high quality travel documents and maps are available to visitors with necessary safety warnings.

### Management of Cultural Heritage (historic structures/relics)

The mining/pastoral/wood line cultural heritage which attracts many visitors to the Goldfields former stations includes old buildings, derelict corrugated iron structures, rusted machinery parts, debris, stock yards, mine shafts, railway formations and history, dams and wells. Although of interest, some of these items pose risks to visitor safety and can detract from site presentation. The integrity of a historic precinct can be compromised by the introduction of contemporary elements.

*The aim is to maintain and protect cultural heritage in accordance with heritage guidelines and to manage visitor risks and recreation development sensitively to preserve outback/historic appeal.*

#### Recommendations

- Undertake a process that identifies and assesses pastoral cultural heritage to provide management and interpretation direction for protection of cultural heritage values.
- Assess and manage visitor risk associated with cultural heritage artefacts.
- Remove unnecessary debris which is not of cultural or heritage value.
- Develop a sensitive approach to preserving and building alongside historic elements while preventing the loss of outback/historic appeal through inappropriate or over development.
- Interpret cultural heritage values.

#### Information and Interpretation

Current visitor communication including pre-visit brochures, pamphlets, maps, information, interpretation, orientation and directional signage needs to be upgraded to meet DEC standards. Additional visitor information and interpretation would improve visitor services and experience.

Entry stations are not present at either of the former stations and visitor information is via notices or campground hosts/caretakers.

*The aim is to develop a communications plan and provide visitors with appropriate, high quality information to improve safety, understanding, appreciation and enjoyment of Goongarrie and Credo and to communicate management messages.*

#### Recommendations

- Prepare a communications plan for Goongarrie and Credo. Liaise with other agencies and tourism industry groups to ensure visitors are receiving consistent information.
- Ensure high quality travel documents and maps are available to visitors with necessary safety warnings.
- Ensure all signs are in accordance with DEC sign standards.
- Provide entry stations with visitor information and orientation signage at highway turnoffs.
- Provide essential signing at key road junctions and hazard areas.
- Use interpretation to assist with visitor management and to promote visitor safety.
- Install signage to highlight visitor risks as required.
- Interpret conservation and cultural heritage values.
- Investigate opportunities for Aboriginal cultural stories to be interpreted in liaison with local Aboriginal groups.

## 10 IMPLEMENTATION

### 10.1 Research and further information gathering

#### Visitor statistics (Vistat)

Current Vistat data suffers due to factors such as insufficient monitoring frequency and unreliable or inaccurate data collection. Data for Credo has been limited in the past to estimated trends determined after several staff visits. More accurate Vistat data will assist the recreation master planning process and future site planning and design.

- Improve methods of data collection to improve accuracy and reliability.
- Collect suitable data to plan development of recreation sites and accommodate future increases in visitor numbers.
- Train and utilise camp ground hosts and caretakers to collect data and visitor feedback.

#### Visitor needs and expectations

The visitor demographic is changing however it is yet to be determined how this will impact on provision of recreational services and activities.

- Investigate visitor needs in relation to improved facilities, comfort, convenience and range of activities.

#### 4WD circuits

Further research is required to determine the historic alignment of the Gus Luck Track and identify suitable tracks for 4WD circuits. Liaise with 4WD groups such as Track Care WA and commercial tour operators in the area to plan routes and co-ordinate trail networks.

### 10.2 Further consultation required

#### Joint management

- Continue discussions with local Aboriginal groups and the GLSC through the MoU to further develop joint management initiatives and to progress from steering committees and working groups to a Park Council.
- Liaise with Aboriginal groups to identify bush camp sites and develop interpretation material.

#### Integrated Regional Planning

- Discussions with relevant stakeholders to be conducted during planning process and as required.

### 10.3 Project staging and priorities

Stage	Location	Actions
<b>GOONGARRIE</b>		
<b>Stage 1 Works</b>	Zone A: Homestead Precinct	<b>PLANNING</b> <ul style="list-style-type: none"> <li>▪ Undertake structural assessment – homestead buildings and machinery shed</li> <li>▪ Undertake site planning and design; identify staff and visitor zones, historic precinct, review road alignments, investigate suitable day use and camping locations, consider campground host location</li> <li>▪ Prepare concepts, opinions of probable costs, undertake consultation as required</li> <li>▪ Prepare site development plan and interpretation material</li> </ul>
		<b>ACCESS ROADS and CAR PARKS</b> <ul style="list-style-type: none"> <li>▪ Construct access roads and parking areas to existing homestead buildings and machinery shed</li> <li>▪ Install parking area, collector paths, bollards, wheel stops, signage</li> </ul>

Stage	Location	Actions
		<ul style="list-style-type: none"> <li>Install protective fencing, road closures, ripping and rehabilitation</li> </ul> <p>GENERAL INFRASTRUCTURE AND DAY USE</p> <ul style="list-style-type: none"> <li>Upgrade and repair homestead buildings and machinery shed</li> <li>Install new furniture – replace old picnic tables at homestead buildings as required</li> <li>Standardise signs and interpretation throughout the site</li> <li>Construct interpretation and visitor information centre at machinery shed venue. Provide outdoor gathering area with picnic table seating</li> <li>Install day use area facilities as required</li> </ul> <p><i>Note: Inclusion of day use area at homestead precinct to be determined during site planning stage, day use may be relocated to alternative site near Goldfields Highway.</i></p> <p>TRACKS AND TRAILS</p> <ul style="list-style-type: none"> <li>Upgrade existing 4km walk trail, install trail head and markers</li> </ul>
	Zone B: Recreation Sites and Short Drive Circuit	<p>ROAD WORKS and SIGNAGE</p> <ul style="list-style-type: none"> <li>Complete upgrade of access road to all weather standard including highway T junction at southern access near Goongarrie town site</li> <li>Standardise signs from highway and throughout Zone B</li> <li>Install vehicle lay-by with information station on access road near Goldfields Hwy turn-off</li> </ul>
<b>Stage 2 Works</b>	Zone A: Homestead Precinct	<p>PLANNING</p> <ul style="list-style-type: none"> <li>Undertake additional site planning and design as required</li> <li>Prepare concepts, opinions of probable costs and documentation</li> </ul> <p>GENERAL INFRASTRUCTURE</p> <ul style="list-style-type: none"> <li>Install circulation paths, signage and historic precinct interpretation</li> <li>Provide campground host accommodation</li> </ul> <p>CAMPING LOOPS</p> <ul style="list-style-type: none"> <li>Construct camping loop access roads and signage</li> <li>Construct camp site bays including picnic tables and mulga rails</li> <li>Install protective fencing, road closures, ripping and rehabilitation</li> <li>Install circulation paths and signage</li> <li>Campground facilities – construct camp shelter, toilets, new picnic tables and communal camp fire</li> </ul> <p>TRACKS AND TRAILS</p> <ul style="list-style-type: none"> <li>Construct cycle trail, install trail head, markers and interpretation</li> </ul>
	Zone B: Recreation Sites and Short Drive Circuit	<p>ROAD WORKS and SIGNAGE</p> <ul style="list-style-type: none"> <li>Complete upgrade of secondary access road from Comet Vale to all weather standard including highway T junction</li> <li>Standardise signs from highway and throughout Zone B</li> <li>Install vehicle lay-by with information station on access road near Goldfields Hwy turn-off</li> </ul>
	<b>All Stages/ Stage 3 Works</b>	<p>PLANNING</p> <ul style="list-style-type: none"> <li>Investigate possible recreation sites – day use area and lookout</li> </ul>

Stage	Location	Actions
		<ul style="list-style-type: none"> <li>▪ Determine route for self-drive history trail</li> <li>▪ Define stops for viewing/points of interest</li> <li>▪ Investigate route for historical interpretive walk trail at old Goongarrie town site and railway siding</li> <li>▪ Prepare concepts, opinions of probable costs and documentation</li> </ul> <p>ZONE B RECREATION FACILITIES</p> <ul style="list-style-type: none"> <li>▪ Construct new day use area</li> <li>▪ Construct new lookout</li> <li>▪ Construct interpretation stops and history walk trail</li> <li>▪ Install interpretation</li> </ul>
<b>All Stages/ Stage 4 Works</b>	Zone C: 4WD Circuit	<p>PLANNING</p> <ul style="list-style-type: none"> <li>▪ Determine 4WD circuit routes and links to the Gus Luck track and Credo</li> <li>▪ Define stops for viewing/points of interest</li> <li>▪ Assess visitor risks – along route and at stops</li> <li>▪ Prepare concepts, probable costs and documentation</li> <li>▪ Investigate alternative media for interpretation</li> </ul> <p>ZONE C 4WD CIRCUIT FACILITIES</p> <ul style="list-style-type: none"> <li>▪ Construct interpretation stops</li> <li>▪ Implement interpretation</li> </ul>
<b>CREDO</b>		
<b>Stage 1 Works</b>	Zone A: Homestead Precinct	<p>PLANNING</p> <ul style="list-style-type: none"> <li>▪ Structural assessment – shearing shed and other homestead buildings</li> <li>▪ Review existing homestead building planning and staff and caretaker accommodation</li> <li>▪ Undertake site planning and design; consider future use of buildings, identify staff and visitor zones, historic precinct, review road alignments, investigate suitable day use and camping locations</li> <li>▪ Prepare concepts, opinions of probable costs, undertake consultation as required</li> <li>▪ Prepare site development plan and interpretation material</li> </ul> <p>ACCESS ROADS and CAR PARKS</p> <ul style="list-style-type: none"> <li>▪ Construct access roads and parking areas to existing homestead buildings and shearing shed</li> <li>▪ Install parking area, collector paths, bollards, wheel stops, signage</li> <li>▪ Install protective fencing, road closures, ripping and rehabilitation</li> </ul> <p>DAY USE</p> <ul style="list-style-type: none"> <li>▪ Shearing shed repairs and upgrade for day use</li> <li>▪ Day use facilities - install new toilet, furniture and visitor information</li> <li>▪ Shearing shed – install interpretation node and interpretive walk</li> </ul> <p>GENERAL INFRASTRUCTURE</p> <ul style="list-style-type: none"> <li>▪ Install circulation paths, signage and historic precinct interpretation</li> </ul> <p>HOMESTEAD BUILDING and CARETAKER ACCOMMODATION</p>

Stage	Location	Actions
		<ul style="list-style-type: none"> <li>Upgrade homestead building and accommodation facilities</li> </ul>
	Zone B: Recreation Sites and Short Drive Circuit	<p>ROAD WORKS and SIGNAGE</p> <ul style="list-style-type: none"> <li>Upgrade access road and establish a T junction at Coolgardie North Rd</li> <li>Standardise signs from highway and throughout Zone B</li> <li>Install vehicle lay-by with information station on access road near Coolgardie North Road turn-off</li> </ul>
<b>Stage 2 Works</b>	Zone A: Homestead Precinct	<p>PLANNING</p> <ul style="list-style-type: none"> <li>Undertake additional site planning and design as required</li> <li>Review existing Shearers' Quarters buildings and consider long term use</li> <li>Prepare concepts, probable costs and documentation</li> </ul> <p>CAMPING LOOPS</p> <ul style="list-style-type: none"> <li>Construct camping loop access roads and signage</li> <li>Construct camp site bays including picnic tables and mulga rails</li> <li>Install protective fencing, road closures and ripping</li> <li>Campground facilities – construct toilets, circulation paths, walk trail to homestead and signage</li> </ul> <p>SHEARERS' QUARTERS CAMP</p> <ul style="list-style-type: none"> <li>Upgrade buildings and facilities</li> </ul>
<b>Stage 3 Works</b>	Zone A: Homestead Precinct	<p>PLANNING</p> <ul style="list-style-type: none"> <li>Undertake additional site planning and design as required</li> <li>Review planning for staff accommodation and long term use of homestead building</li> <li>Prepare concepts, probable costs and documentation</li> </ul> <p>FIELD STUDY CENTRE and RESEARCH ACCOMMODATION</p> <ul style="list-style-type: none"> <li>Construct field study centre research and accommodation facilities</li> </ul> <p>TRACKS AND TRAILS</p> <ul style="list-style-type: none"> <li>Construct walk/cycle trail, install trail head, markers and interpretation (west side only of Coolgardie North Rd)</li> </ul>
<b>All Stages/ Stage 4 Works</b>	Zone B: Recreation Sites and Short Drive Circuit	<p>PLANNING</p> <ul style="list-style-type: none"> <li>Investigate possible recreation sites – additional day use area and interpretive walk trails/ bird hides around Rowles Lagoon</li> <li>Review road access</li> <li>Determine route for walk/cycle trail between Credo homestead and Rowles Lagoon day use area</li> <li>Determine route for self-drive trail</li> <li>Define stops for viewing/points of interest</li> <li>Prepare concepts, opinions of probable costs and documentation</li> </ul> <p>ZONE B RECREATION FACILITIES</p> <ul style="list-style-type: none"> <li>Construct amendments to road access</li> <li>Construct new day use area</li> <li>Investigate bush camping site for Aboriginal cultural purposes</li> <li>Construct walk/cycle trail, install trail head and markers (east side of Coolgardie North Rd)</li> <li>Construct interpretation stops</li> <li>Install interpretation</li> </ul>

Stage	Location	Actions
<b>All Stages/ Stage 5 Works</b>	Zone C: 4WD Circuit	<p>PLANNING</p> <ul style="list-style-type: none"> <li>▪ Determine 4WD circuit routes and links to Gus Luck Track and Goongarrie</li> <li>▪ Define stops for viewing/points of interest</li> <li>▪ Assess visitor risks – along route and at stops</li> <li>▪ Prepare concepts, opinions of probable costs and documentation</li> <li>▪ Investigate alternative media for interpretation</li> </ul> <p>ZONE C 4WD CIRCUIT FACILITIES</p> <ul style="list-style-type: none"> <li>▪ Close off old roads and rehabilitate</li> <li>▪ Design and construct interpretation stops</li> <li>▪ Implement interpretation</li> </ul>

*Note: Proposed Staging and Priorities for Goongarrie and Credo dependent on outcomes of site investigations for new recreation sites, possible trail routes and Goldfields Region management decisions such as whether to include day use at Goongarrie homestead or relocate.*

#### 10.4 Co-ordination

Co-ordinate the development of Goongarrie and Credo Zones A-C with the following Regional projects:

Goongarrie -

- Undertake road works to provide safe access from the Goldfields Highway at Goongarrie town site and Comet Vale, co-ordinate with Main Roads.

Credo -

- Undertake road works to provide safe access from Coolgardie North Road at homestead turnoff and all weather access across to Rowles Lagoon. Co-ordinate with Shire of Coolgardie as required.
- Site remediation and upgrade of facilities at Rowles Lagoon.

*Note: Site Development Plan to be updated.*

Goongarrie and Credo –

- Prepare a communications plan.
- Liaise with other agencies and industry groups to ensure consistent visitor information is provided.
- Review Vistat Report suggestions for promotion and marketing in section "Promotion of Former Pastoral Station Facilities" (see **Appendix B**).

General –

- Liaise with relevant agencies/departments/organisations to ensure protection of cultural heritage and nature conservation values.

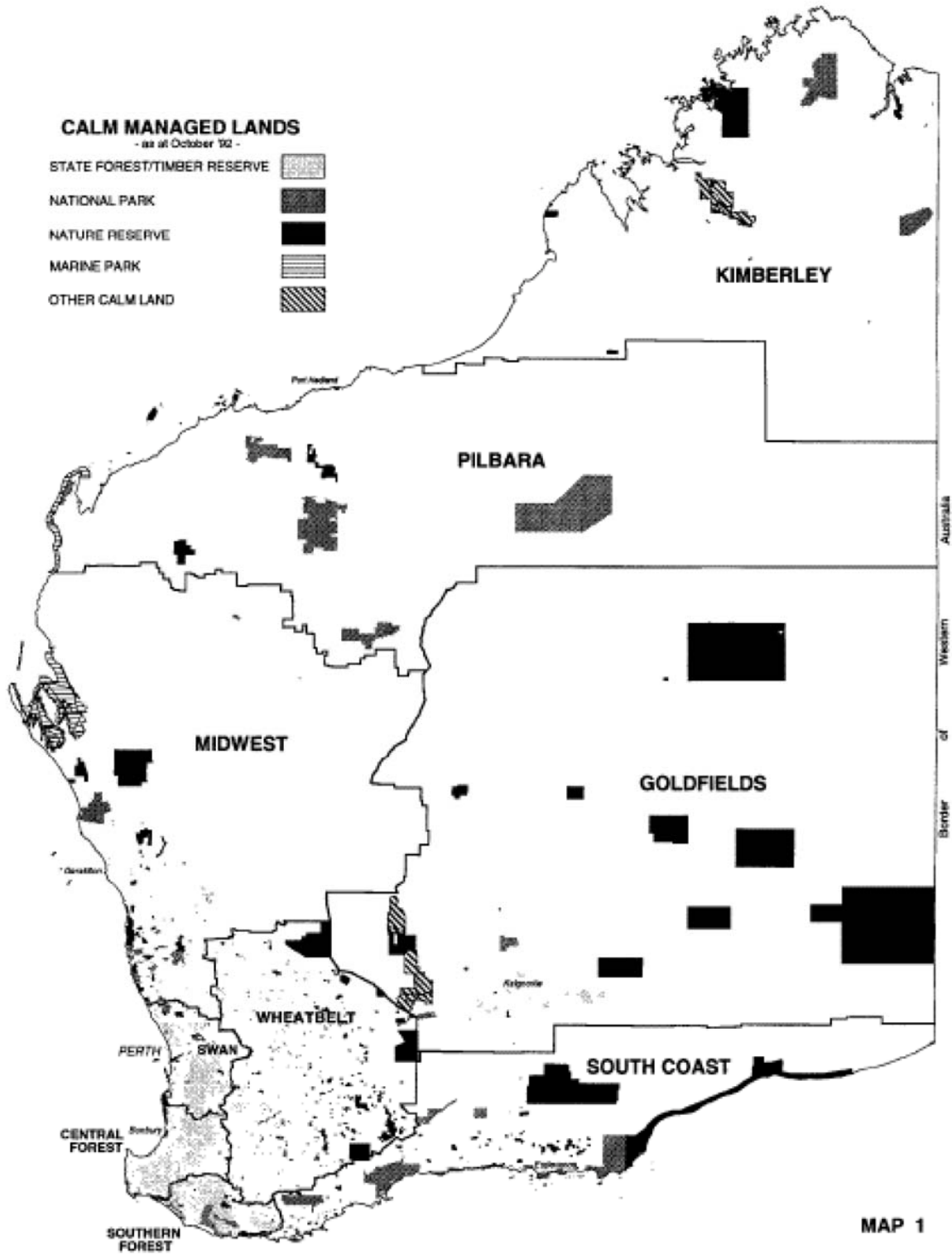
#### 10.5 Funding resourcing

- Pursue funding through capital works and other sources as a priority.
- Investigate opportunities for corporate sponsorship to assist with the development of recreation sites.
- Ensure adequate staff and financial resources available to carry out works program.



## APPENDICES

### APPENDIX A: Extent of Conservation Reserves as at October 1992<sup>30</sup> (For comparison purposes only with current reserves system)



<sup>30</sup> DEC (1994) Goldfields Region: Regional Management Plan 1994-2004, pg 2

## APPENDIX B: Promotion of Former Pastoral Station Facilities<sup>31</sup>

### Promotion of Former Pastoral Stations Facilities

Historically fascinating and currently comfortable, the Former Pastoral Stations are an exciting and unique component of the Goldfields legacy and require further promotion. Most of the former pastoral stations have been upgraded or in the process of upgrade. Requirement is for marketing of these sites.

- ❖ **Public Display**  
An improvement of promotional material displayed in the reception area of the Regional office would increase the visiting public's knowledge of former pastoral stations facilities and former function. In addition, become further involved in community displays to get the message across.
- ❖ **Maintenance of Facilities**  
Continue the high level of maintenance of the former pastoral station facilities to ensure the Departmental public image of recreational sites is maintained. Work with campground hosts to set standards, however keep the unique rustic feel of the sites.
- ❖ **Additional signposting as Lake Mason style "camping" sign to be extended to Mt Elvire, Lorna Glen, Jaurdi and other sites and ensure they are on the main roads. Improve road access.**
- ❖ **Develop a plan and process and further active distribution of DEC regional magazines – roadhouses, visitors centres etc. Do famils with accommodation groups such as discovery parks**
- ❖ **Work with Tourism WA, Mid west and Goldfields Esperance to develop marketing strategies for visitors and groups – currently in progress. Look at group books rather than just individuals.**
- ❖ **Develop interpretation, management brochures and sign-in materials for former pastoral stations.**

### Other Public Information

- ❖ **Develop interpretation signs for Queen Victoria Springs, increase information at Yeo Lake. Basic ideas of interpretation panels have been produced.**
- ❖ **Develop park notes for high use sites and develop plan for distribution. DEC has standard on these notes.**

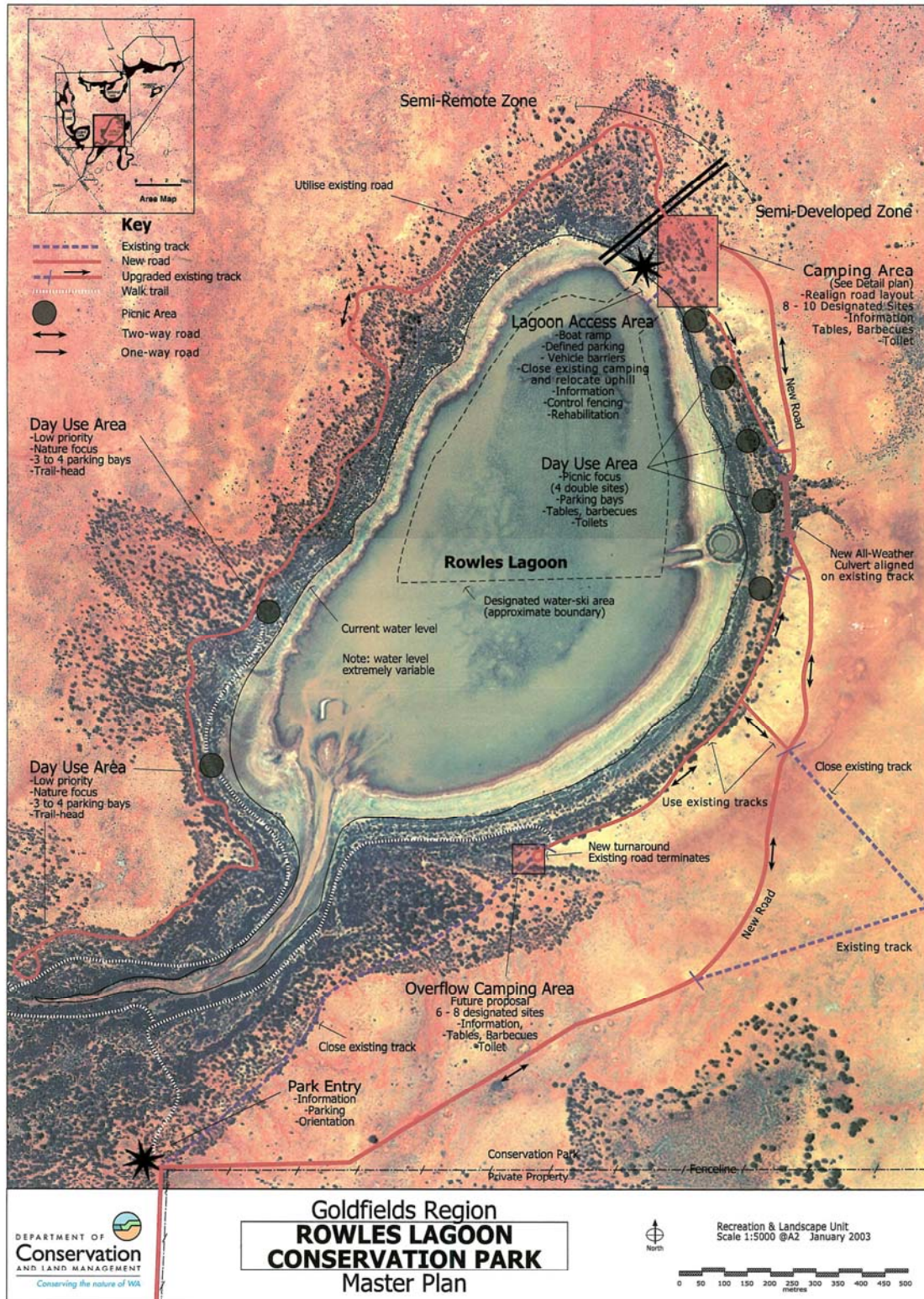
### Near Future Works Required

- ❖ **Upgrade Kalgoorlie arboretum and source additional funding from community groups previously involved.**
- ❖ **Work with Main Roads (as been requested) to provide safe access to visitors from Great Eastern Hwy to Boondie and Goldfields Hwy to Goongarrie station.**
- ❖ **Create safe roading access to Credo homestead.**

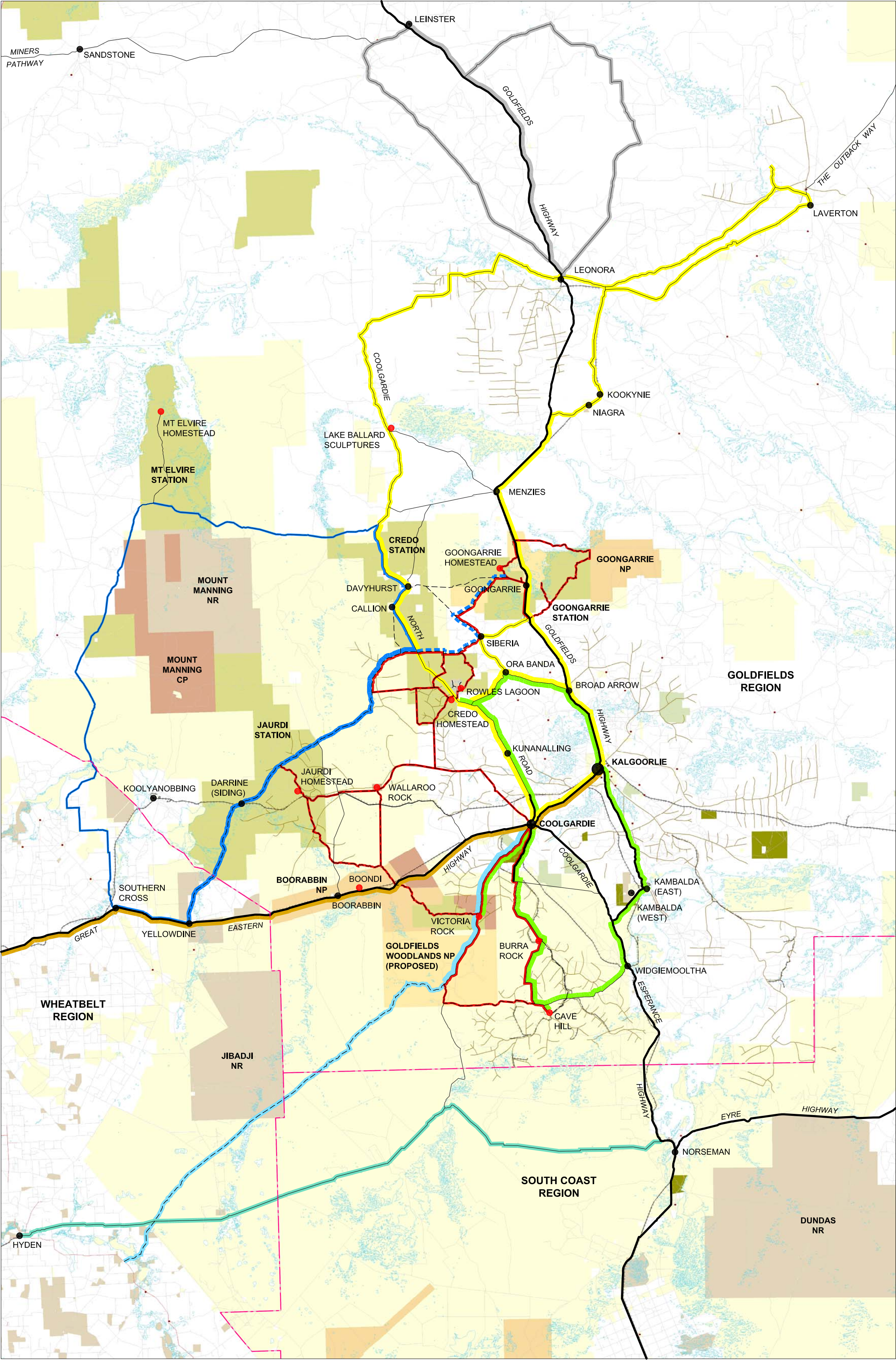
<sup>31</sup> DEC (2009) *Goldfields Region Visitor Statistics Report (VISTAT) 2008/09*, pg 38



## APPENDIX C: Rowles Lagoon Conservation Park - Master Plan







LEGEND - Goldfields Reserves

- NATIONAL PARK
- CONSERVATION PARK
- FORMER LEASEHOLD
- NATURE RESERVE
- UNALLOCATED CROWN LAND
- STATE FOREST, TIMBER RESERVE
- 5(1)(g) RESERVE, 5(1)(h) RESERVE

LEGEND - Tourism Trail Network

- GOLDEN QUEST DISCOVERY TRAIL / GQDT (2WD)
- GOLDEN QUEST GREEN TRAIL / GQGT (2WD)
- GOLDEN PIPELINE DRIVE TRAIL (2WD)
- THE GRANITE & WOODLANDS DISCOVERY TRAIL (2WD)
- THE LEONORA LOOP TRAILS (2WD POSSIBLE / 4WD PREFERRED)
- HOLLAND TRACK (4WD)
- THE GUS LUCK TRACK, APPROXIMATE ALIGNMENT (4WD)
- GUS LUCK TRACK - POSSIBLE LINK BETWEEN CREDO AND GOONGARRIE (4WD)
- GUS LUCK TRACK - CIRCUIT LOOP, PROVIDED BY "4WD DAYS IN THE EASTERN GOLDFIELDS" (4WD)
- POSSIBLE 4WD TRAIL NETWORK ROUTE
- SEALED ROADS
- UNSEALED ROADS
- 4WD TRACKS
- HISTORIC WOODLINES
- RECREATION SITE
- REGIONAL BOUNDARY

GENERAL NOTES:

1) PROPOSED TENURE - A COMPLETE RATIONALISED DATA SET OF PROPOSED TENURE IS NOT AVAILABLE. PLEASE BE AWARE THAT THE PROPOSED DATA SET CAN ONLY BE USED AS AN INDICATOR TO POSSIBLE TENURE CHANGES.

D	MASTER PLAN - FINAL DRAFT	11.08.2011
C	MASTER PLAN - DRAFT	02.06.2011
B	MASTER PLAN - DRAFT	11.10.2010
A	PRELIMINARY ONLY	30.06.2010
REV	DESCRIPTION	DATE

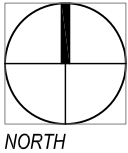
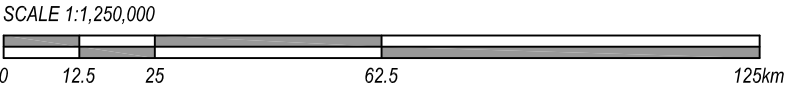


Department of  
Environment and Conservation

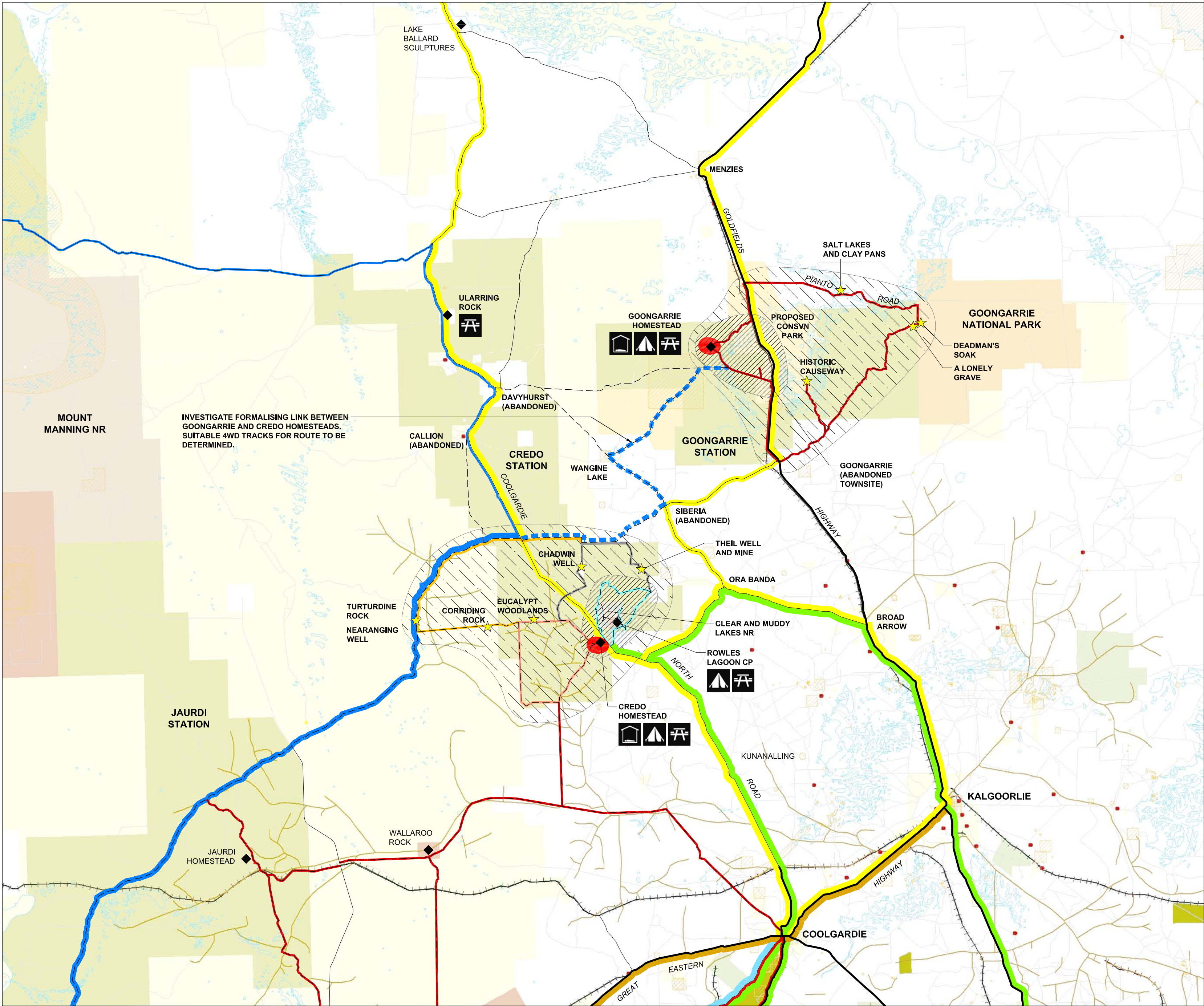


Drawing Title: <b>GOONGARRIE CREDO MASTER PLAN</b> <b>CONTEXTUAL PLAN</b> <b>Goldfields Region</b>			
Designer/s: SW	Draftperson/s: SW	Engineer: -	
Date of Issue: 11.08.2011	Checked by: NG	Region Approval: -	
Scale @ A2: 1:1,250,000	Revision: D	District Approval: -	
Date:	Project Number:	Drawing:	Sheet no.
110811	G0901	Goongarrie Credo MP	1

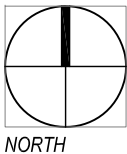
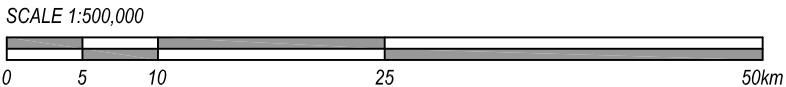
CONTEXTUAL PLAN: Goldfields Reserves and Trail Network near Kalgoorlie  
SCALE - 1:1,250,000







RECREATION ZONES  
SCALE - 1:500,000



GENERAL NOTES:

1) PROPOSED TENURE - A COMPLETE RATIONALISED DATA SET OF PROPOSED TENURE IS NOT AVAILABLE. PLEASE BE AWARE THAT THE PROPOSED DATA SET CAN ONLY BE USED AS AN INDICATOR TO POSSIBLE TENURE CHANGES.

LEGEND

RECREATION AND MANAGEMENT ZONES

- ZONE A - HOMESTEAD PRECINCT
- ZONE B - HALF DAY TRIP; DAY USE SITES AND PASTORAL/HISTORIC ATTRACTIONS. REFER TO DRAWINGS 3 & 4 FOR DETAIL.
- ZONE C - DAY TRIP; 4WD TRACKS AND EXPLORING, THEMED TRAILS, PASTORAL/HISTORIC SITES AND NATURAL FEATURES
- FORMER LEASEHOLD - GOONGARRIE AND CREDO MANAGEMENT ZONES INCLUDING CONSERVATION, CATCHMENT/WETLAND, CULTURAL, SANDALWOOD HARVESTING, MINING AND EXPLORATION
- ABORIGINAL SITES REGISTER

ACCESS

- SEALED ROADS
- UNSEALED ROADS
- 4WD TRACKS
- GOLDEN QUEST DISCOVERY TRAIL (2WD)
- GOLDEN QUEST GREEN TRAIL / GQGT (2WD)
- GOLDEN PIPELINE DRIVE TRAIL (2WD)
- HOLLAND TRACK (4WD)
- THE GUS LUCK TRACK, APPROXIMATE ALIGNMENT (4WD)
- GUS LUCK TRACK - POSSIBLE LINK BETWEEN CREDO AND GOONGARRIE (4WD)
- GUS LUCK TRACK - CIRCUIT LOOP, PROVIDED BY "4WD DAYS IN THE EASTERN GOLDFIELDS" (4WD)
- POSSIBLE 4WD TRAIL NETWORK ROUTE
- PROPOSED 4WD CIRCUIT THEME - HISTORIC MINING
- PROPOSED 4WD CIRCUIT THEME - WOODLINES AND WOODLANDS, DAMS AND PASTORAL
- PROPOSED 4WD CIRCUIT THEME - RECENT MINING HISTORY
- PROPOSED 4WD CIRCUIT THEME - WETLANDS

EXISTING RECREATION SITES AND ATTRACTIONS

- RECREATION SITE
- DAY USE AREA AND/OR PICNIC TABLES
- VISITOR ATTRACTION - REFER TO DRAWINGS 3 & 4 FOR ATTRACTIONS WITHIN ZONE B

EXISTING ACCOMMODATION AND CAMPING

- VEHICLE BASED CAMPING
- HOMESTEAD ACCOMMODATION

D	MASTER PLAN - FINAL DRAFT	11.08.2011
C	MASTER PLAN - DRAFT	02.06.2011
B	MASTER PLAN - DRAFT	11.10.2010
REV	DESCRIPTION	DATE



Drawing Title:  
**GOONGARRIE CREDO MASTER PLAN**  
**RECREATION ZONES**  
**Goldfields Region**

Designer/s: SW	Draftperson/s: SW	Engineer: -
Date of Issue: 11.08.2011	Checked by: NG	Region Approval: -
Scale @ A2: 1:500,000	Revision: D	District Approval: -

Date:	Project Number:	Drawing:	Sheet no.
110811	G0901	Goongarrrie Credo MP	2



**HISTORIC SITE**

- Interpret Abandoned Comet Vale town site

**PROPOSED NORTHERN ENTRY STATEMENT**

- Upgrade access road from Comet Vale (northern access) to homestead including new junction with Goldfields Highway
- Provide road signage
- Provide vehicle lay-by with orientation information sign at Highway turnoff

**GOONGARRIE HOMESTEAD**  
Refer to Drawing 5

**HOMESTEAD PRECINCT**  
Primary visitor node

- Maintain outdoor venue for events and groups
- Maintain built accommodation
- Upgrade vehicle based camping
- Upgrade day use area
- Upgrade interpretive walk trail
- Provide interpretive cycle trail

**PROPOSED DRIVE TRAIL**  
Half day circuit with interpretation

- Provide circuit to west side of Goldfields Highway including historic townsites and attractions, and Goongarrie hill lookout over salt lakes

**POSSIBLE LOOKOUT**

- Depending on mining proposals provide a day use area for a lookout at Goongarrie Hill with views over Lake Goongarrie salt lake and clay pans
- Provide interpretation

**PROPOSED CONSERVATION PARK**

COMET VALE (ABANDONED TOWNSITE)

GOONGARRIE STATION

GOONGARRIE HILL

GOONGARRIE (ABANDONED TOWNSITE)  
4 GRAVES

SAFE ROADING ACCESS  
RAILWAY COTTAGES  
GQDT SITE 5

GOONGARRIE STATION

**HISTORIC SITES**  
Abandoned Goongarrie town site

- Investigate self guided, historic walk trail with interpretation

**PROPOSED 4WD TRAIL**  
Full day circuit with interpretation

- Proposed circuit to east side of Goldfields Highway including Pianto Road drive through salt lakes and clay pans, Deadman's Soak and A Lonely Grave historic sites in Goongarrie NP, and variety of vegetation types
- See Drawing 2 for extent of circuit

**PROPOSED DAY USE**  
Rest stop and day outing

- Investigate possible sites for new day use area with views of the lake and a lakeside interpretive walk trail.

*NOTE: Preferred location in proposed DEC tenure. Confirm tenure prior to commencement of development planning.*

**PROPOSED SOUTHERN ENTRY STATEMENT**

- Provide safe roading access at T-junction with Goldfields Highway
- Provide road signage
- Provide vehicle lay-by with orientation information sign at Highway turnoff

**HISTORIC SITE**  
Historic Causeway

- Site for 4WD visitors to 'discover' when out exploring the area.

*NOTE: Site will not be promoted in DEC publications due to access limitations.*

**LEGEND**

**ACCESS:**

- EXISTING SEALED ROADS
- EXISTING UNSEALED ROADS
- EXISTING 4WD TRACKS
- 4WD TRAIL - PROPOSED SELF GUIDED CIRCUITS

**ACCOMMODATION AND CAMPING**

- PROPOSED VEHICLE LAY-BY WITH VISITOR ORIENTATION AND INFORMATION
- CAMPING / HOMESTEAD

**DAY USE**

- DAY USE AREA

**ACTIVITIES AND ATTRACTIONS**

- PICNIC AREA - PROPOSED
- INTERPRETIVE WALK - UPGRADE OR PROPOSED
- LOOKOUT/VISTAS - PROPOSED
- 4WD TRAIL NETWORK - PROPOSED HALF DAY AND FULL DAY TRIP CIRCUITS
- CYCLING - PROPOSED
- FEATURE OR VISITOR ATTRACTION - EXISTING
- WALKING/CYCLING TRAIL - UPGRADE OR PROPOSED
- INVESTIGATION AREA
- VIEWS/VISTAS

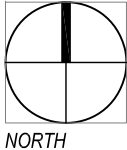
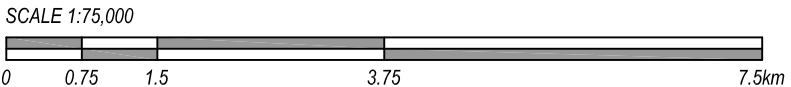
**GENERAL NOTES:**

1) PROPOSED TENURE - A COMPLETE RATIONALISED DATA SET OF PROPOSED TENURE IS NOT AVAILABLE. PLEASE BE AWARE THAT THE PROPOSED DATA SET CAN ONLY BE USED AS AN INDICATOR TO POSSIBLE TENURE CHANGES.

D	MASTER PLAN - FINAL DRAFT	11.08.2011
C	MASTER PLAN - DRAFT	02.06.2011
B	MASTER PLAN - DRAFT	11.10.2010
A	PRELIMINARY ONLY	30.06.2010
REV	DESCRIPTION	DATE

 Department of Environment and Conservation 

Drawing Title:			
<b>GOONGARRIE CREDO MASTER PLAN</b>			
<b>Goongarrie Zone B Master Plan</b>			
<b>Goldfields Region</b>			
Designer/s:	Draftperson/s:	Engineer:	
SW	SW	-	
Date of Issue:	Checked by:	Region Approval:	
11.08.2011	NG	-	
Scale @ A2:	Revision:	District Approval:	
1:75,000	D	-	
Date:	Project Number:	Drawing:	Sheet no.
110811	G0901	Goongarrie Credo MP	3

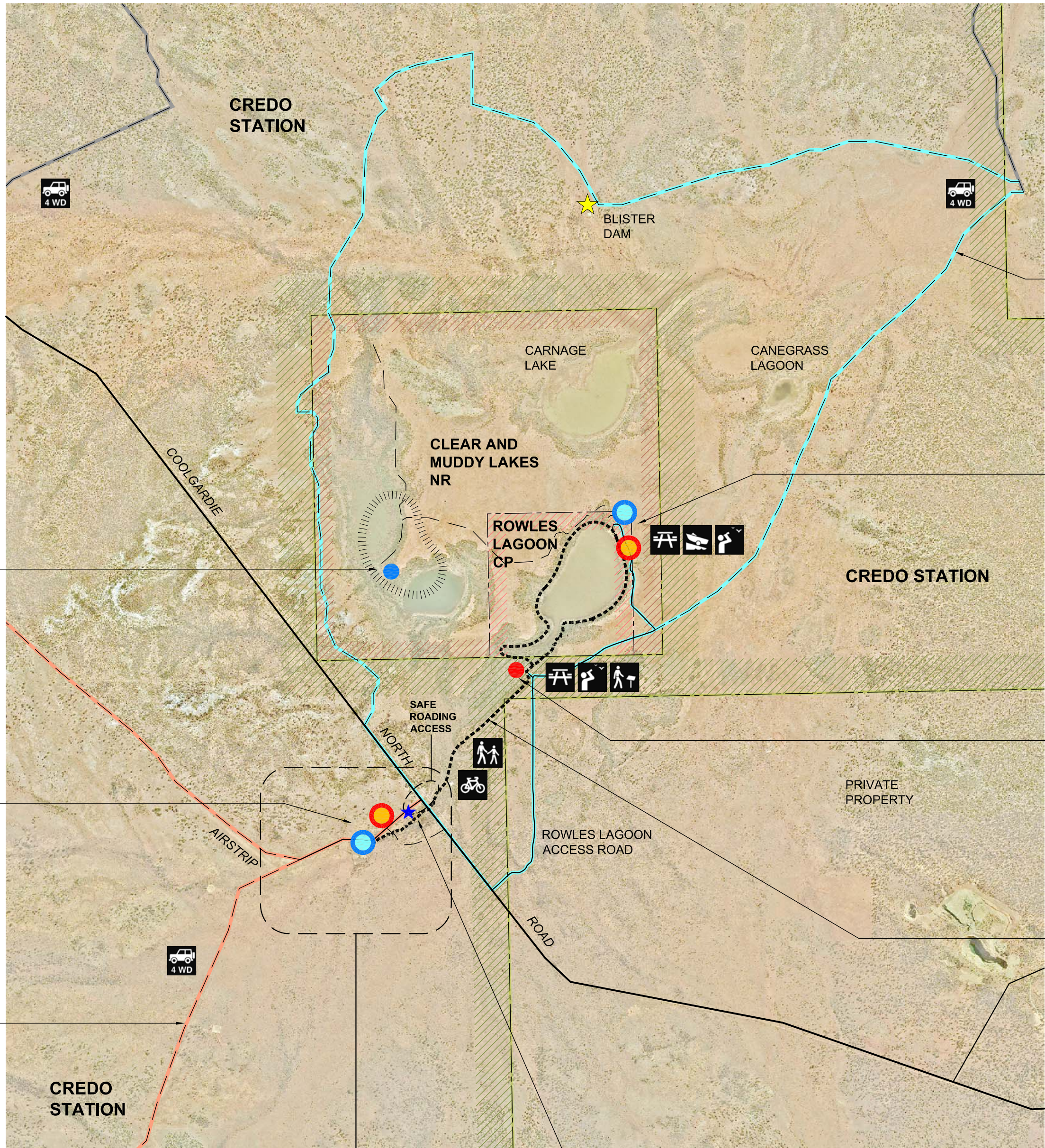




- POSSIBLE BUSH CAMP**  
for Aboriginal Cultural purposes
- Investigate Clear and Muddy Lakes as a possible bush camp site for local Aboriginal groups in accordance with Management Plan.
  - Liaise with Traditional Owners to discuss requirements and alternative sites.
  - Determine whether proposed activities appropriate in Nature Reserve.

- HOMESTEAD PRECINCT**  
Primary visitor node
- Provide day use area at Shearing Shed
  - Maintain built accommodation for staff and caretakers
  - Determine future use of Shearers' Quarters
  - Provide vehicle based camping
  - Provide interpretive walk trails

- PROPOSED 4WD TRAILS**  
Full day circuit with interpretation
- Provide 4WD track circuits for GPS exploring with interpretive themes including historic, pastoral, mining, woodlands, woodlines, wetlands and catchment
  - See Drawing 2 for extent of circuits



**CREDO HOMESTEAD**  
Refer to Drawing 6

- PROPOSED ENTRY STATEMENT**
- Provide safe roading access at T-junction with Coolgardie North Road
  - Provide road signage
  - Provide vehicle lay-by with orientation information sign at Highway turnoff

- PROPOSED 4WD TRAIL**  
Half day circuit with interpretation
- Provide 4WD track circuit with wetlands/ catchment interpretive theme linking recreation sites in Zone B

- EXISTING DAY USE AREA AND CAMPING**  
Upgrade facilities
- Review road alignments
  - Renovate existing facilities for day use and camping
  - Determine water skiing and power boat use requirements in accordance with management plan
  - Provide interpretive walk trails and bird watching facilities

- PROPOSED DAY USE**  
For passive recreation use
- Provide alternative day use area with picnic area and trail head
  - Provide links to Rowles Lagoon interpretive walk trails and bird watching facilities
  - Provide link to walk/cycle trail from Credo Homestead
  - Investigate walk trail links to other wetland features

- PROPOSED ROWLES LAGOON LINK TRAIL**
- Provide walk and cycle trail link to Rowles Lagoon

**LEGEND**

**ACCESS:**

- EXISTING UNSEALED ROADS
- EXISTING 4WD TRACKS
- PROPOSED 4WD TRAIL THEME - WOODLINES AND WOODLANDS, DAMS AND PASTORAL
- PROPOSED 4WD TRAIL THEME - RECENT MINING HISTORY
- PROPOSED 4WD TRAIL THEME - WETLANDS
- NOTE: 4WD TRAILS ROUTES CONCEPTUAL ONLY, FURTHER REFINEMENT OF ROUTES NEEDED
- PROPOSED VEHICLE LAY-BY WITH VISITOR ORIENTATION AND INFORMATION

**ACCOMMODATION AND CAMPING**

- CAMPING/ HOMESTEAD
- BUSH CAMPING SITE

**DAY USE**

- DAY USE AREA
- MINOR DAY USE AREA

**ACTIVITIES AND ATTRACTIONS**

- PICNIC AREA - EXISTING AND PAROPOSED
- INTERPRETIVE WALK - PROPOSED
- WALKING TRAIL - PROPOSED
- 4WD TRAIL NETWORK - PROPOSED HALF DAY AND FULL DAY TRIP CIRCUITS
- CYCLING - PROPOSED
- BIRD WATCHING - UPGRADE OR PROPOSED
- BOAT RAMP AND WATER SKIING - EXISTING
- FEATURE OR VISITOR ATTRACTION - EXISTING
- WALKING/CYCLING TRAIL - UPGRADE OR PROPOSED
- INVESTIGATION AREA

D	MASTER PLAN - FINAL DRAFT	11.08.2011
C	MASTER PLAN - DRAFT	02.06.2011
B	MASTER PLAN - DRAFT	11.10.2010
A	PRELIMINARY ONLY	30.06.2010
REV	DESCRIPTION	DATE

 **Department of Environment and Conservation** 

Drawing Title:			
<b>GOONGARRIE CREDO MASTER PLAN</b>			
<b>Credo Zone B Master Plan</b>			
<b>Goldfields Region</b>			
Designer/s:	Draftperson/s:	Engineer:	
SW	SW	-	
Date of Issue:	Checked by:	Region Approval:	
11.08.2011	NG	-	
Scale @ A2:	Revision:	District Approval:	
1:50,000	D	-	
Date:	Project Number:	Drawing:	Sheet no.
110811	G0901	Goongarrie Credo MP	4





VIEW TO MACHINERY SHED FROM HOMESTEAD



GOONGARRIE HOMESTEAD



MACHINERY SHED



CAMPGROUND AREA



CAMPGROUND AREA

### RE-DESIGN ROAD NETWORK

- Consider road alignments in relation to visitor use zones
- Provide pedestrian zones to improve visitor safety

### EXISTING BUILT ACCOMMODATION

#### Homestead and Shearer's Cottage

- Maintain existing buildings
- Provide access roads and parking areas
- Maintain/upgrade toilet facilities as required
- Replace picnic tables and seating, remove fire rings
- Provide interpretive walk trails at the homestead precinct with links to longer trails to the west

### EVENTS VENUE AND DAY USE

#### Existing machinery shed workshop and proposed interpretation node

- Investigate options for a day use area at Goongarrie homestead precinct vs. removing day use and relocating to site near Goldfields Highway
- Maintain machinery shed as covered outdoor venue/workshop
- Maintain/upgrade toilet facilities as required
- Provide access road and parking areas
- Provide outdoor gathering area with new picnic table seating
- Provide interpretation displays near machinery shed



GOONGARRIE HOMESTEAD

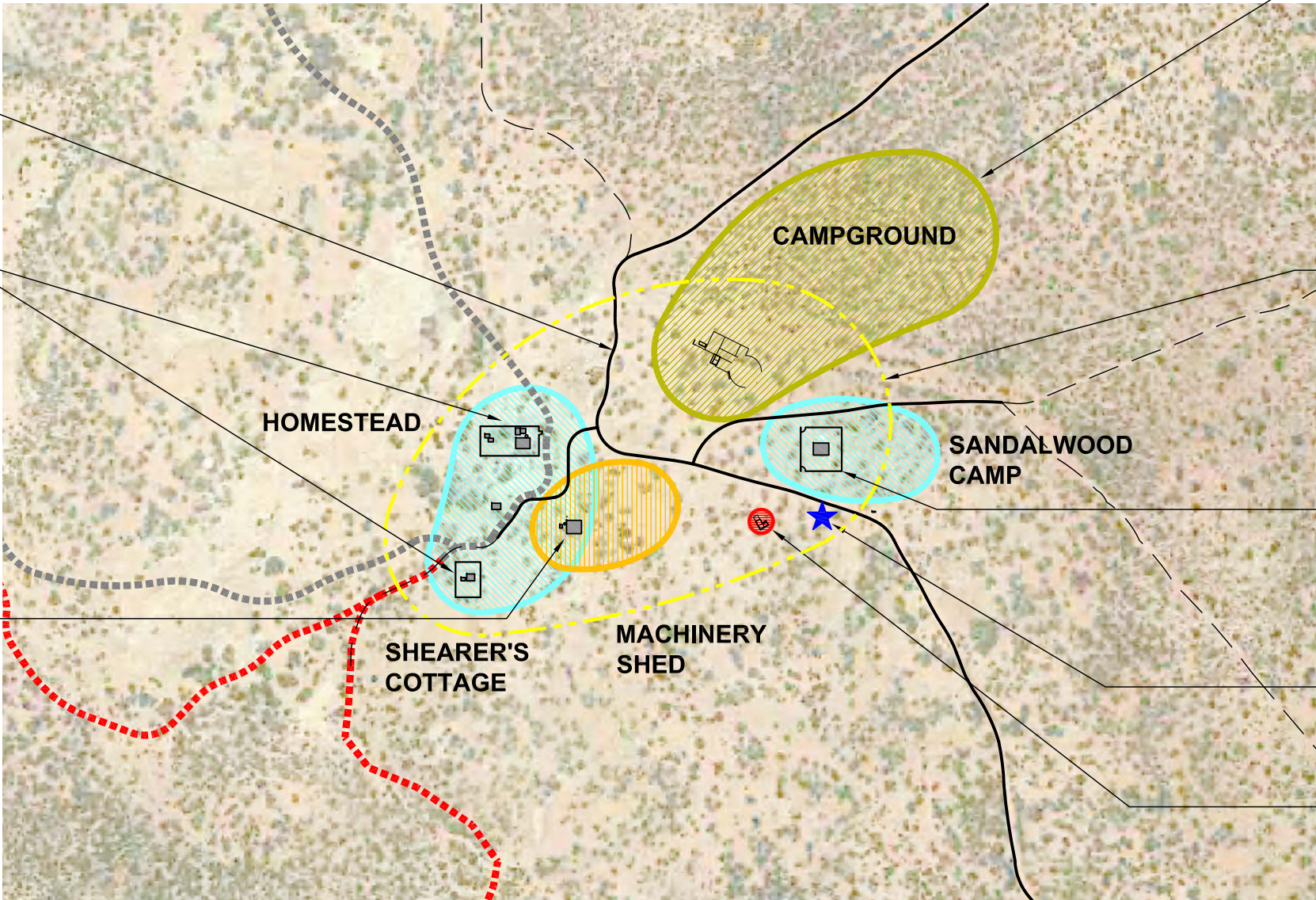
### EXISTING 5KM WALK TRAIL WITH INTERPRETATION

### PROPOSED CYCLE TRAIL

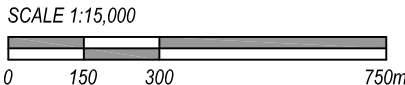
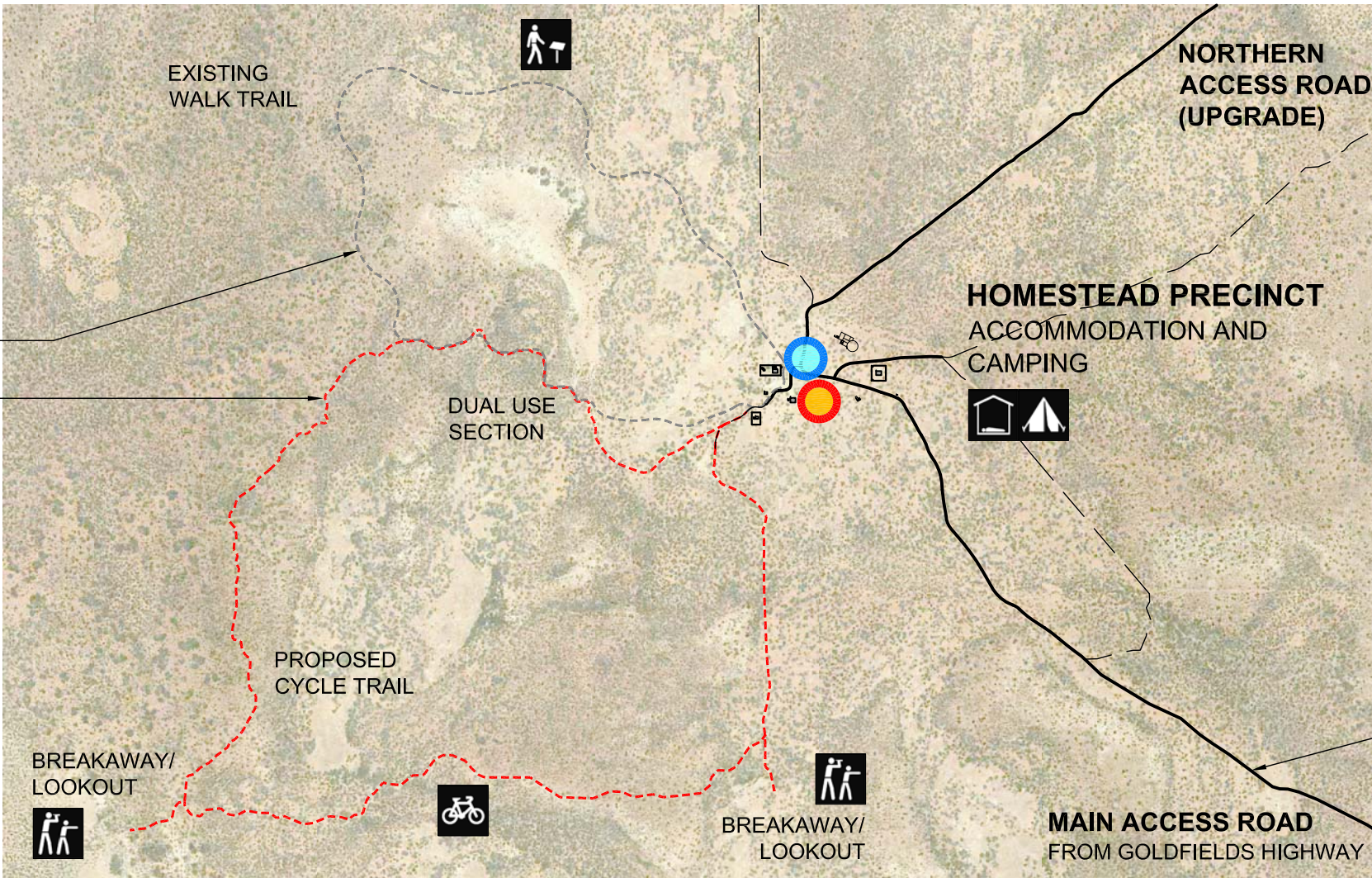
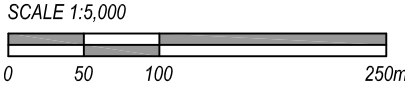
- Investigate formalising existing tracks to create cycle trail with interpretation at features such as breakaways and historic mining/pastoral sites.



MACHINERY SHED AND HOMESTEAD



### GOONGARRIE HOMESTEAD PRECINCT



### PROPOSED CAMPGROUND EXPANSION

#### Vehicle based camping

- Investigate suitable location for campground
- Provide camping loops with defined camping bays
- Consider requirements for long vehicles and groups
- Provide picnic table seating at camping bays
- Provide camp kitchen, communal camp fire, seating and toilet facilities
- Provide walk path links to other facilities

### HISTORIC PRECINCT

#### Promote and protect cultural heritage values and character of site

- Provide walk trails with interpretation and exhibits
- Consider separation of historic and contemporary elements

### EXISTING BUILT ACCOMMODATION

#### Sandalwood Camp

- Maintain existing building
- Provide access road and parking area
- Provide walk trail links to other facilities

### PROPOSED ORIENTATION LAY-BY

- Provide vehicle lay-by with orientation information sign
- Provide directions for campground host enquiries

### PROPOSED CAMPGROUND HOST ACCOMMODATION

- Provide campground host accommodation with private facilities, investigate suitable site



SANDALWOOD CAMP



SANDALWOOD CAMP

### EXISTING ACCESS ROAD/ PROPOSED DAY TRIP DRIVE TRAIL

### GENERAL NOTES:

- 1) DETAILED SITE ASSESSMENT STILL TO BE COMPLETED; DRAWINGS NOT FOR CONSTRUCTION.

### LEGEND

- EXISTING UNSEALED ACCESS ROAD, 2WD GRADE
- EXISTING 4WD TRACKS
- EXISTING WALKING TRAIL
- PROPOSED CYCLING TRAIL
- BUILT ACCOMMODATION - Existing accommodation at the Homestead, Shearers' Cottage and Sandalwood Camp
- EVENTS AND DAY USE - Existing Machinery Shed covered workshop and proposed interpretation node and outdoor gathering area
- CAMPING ZONE - Proposed expansion of vehicle based camping
- HISTORIC PRECINCT WITH INTERPRETATION, EXHIBITS AND WALK TRAILS
- PROPOSED CAMPGROUND HOST ACCOMMODATION
- PROPOSED VISITOR ORIENTATION AND INFORMATION
- INTERPRETIVE WALK - EXISTING
- CYCLING - PROPOSED
- LOOKOUT/VISTAS - PROPOSED
- HOMESTEAD PRECINCT - EXISTING BUILT ACCOMMODATION WITH FACILITIES
- VEHICLE BASED CAMPING - EXISTING TO BE EXPANDED



SHEARER'S COTTAGE

D	MASTER PLAN - FINAL DRAFT	11.08.2011
C	MASTER PLAN - DRAFT	02.06.2011
B	MASTER PLAN - DRAFT	11.10.2010
A	PRELIMINARY ONLY	30.06.2010
REV	DESCRIPTION	DATE



### GOONGARRIE CREDO MASTER PLAN

Goongarrie Homestead Precinct  
Goldfields Region

Designer/s: SW	Draftperson/s: SW	Engineer: -
Date of Issue: 11.08.2011	Checked by: NG	Region Approval: -
Scale @ A2: AS SHOWN	Revision: D	District Approval: -

Date:	Project Number:	Drawing:	Sheet no.
110811	G0901	Goongarrie Credo MP	5





SHEARING SHED



### PROPOSED DAY USE AREA

Primary visitor node and interpretation at shearing shed

- Provide access road and parking area
- Provide visitor facilities including interpretation, toilets and picnic tables
- Investigate providing an interpretive walk trail through the shearing shed and sheep yards with pastoral history/working station themes
- Provide walk trail links to Rowles Lagoon trail and other facilities as required
- Manage visitor risks (ageing structures)



SHEARERS' QUARTERS



SHEARERS' QUARTERS



SHEARERS' QUARTERS

### PROPOSED CAMPGROUND AREAS

#### Vehicle based camping

- Investigate suitable sites for vehicle based camping
- Provide a number of camping loops with camping bays
- Consider requirements for long vehicles and groups
- Provide picnic table seating at camping bays
- Provide toilet facilities
- Provide walk trail links to other facilities

### POSSIBLE CAMPGROUND HOST ACCOMMODATION

- Consider appointing campground hosts to manage campground when established
- Investigate suitable site for host accommodation with private facilities in conjunction with campground design layout

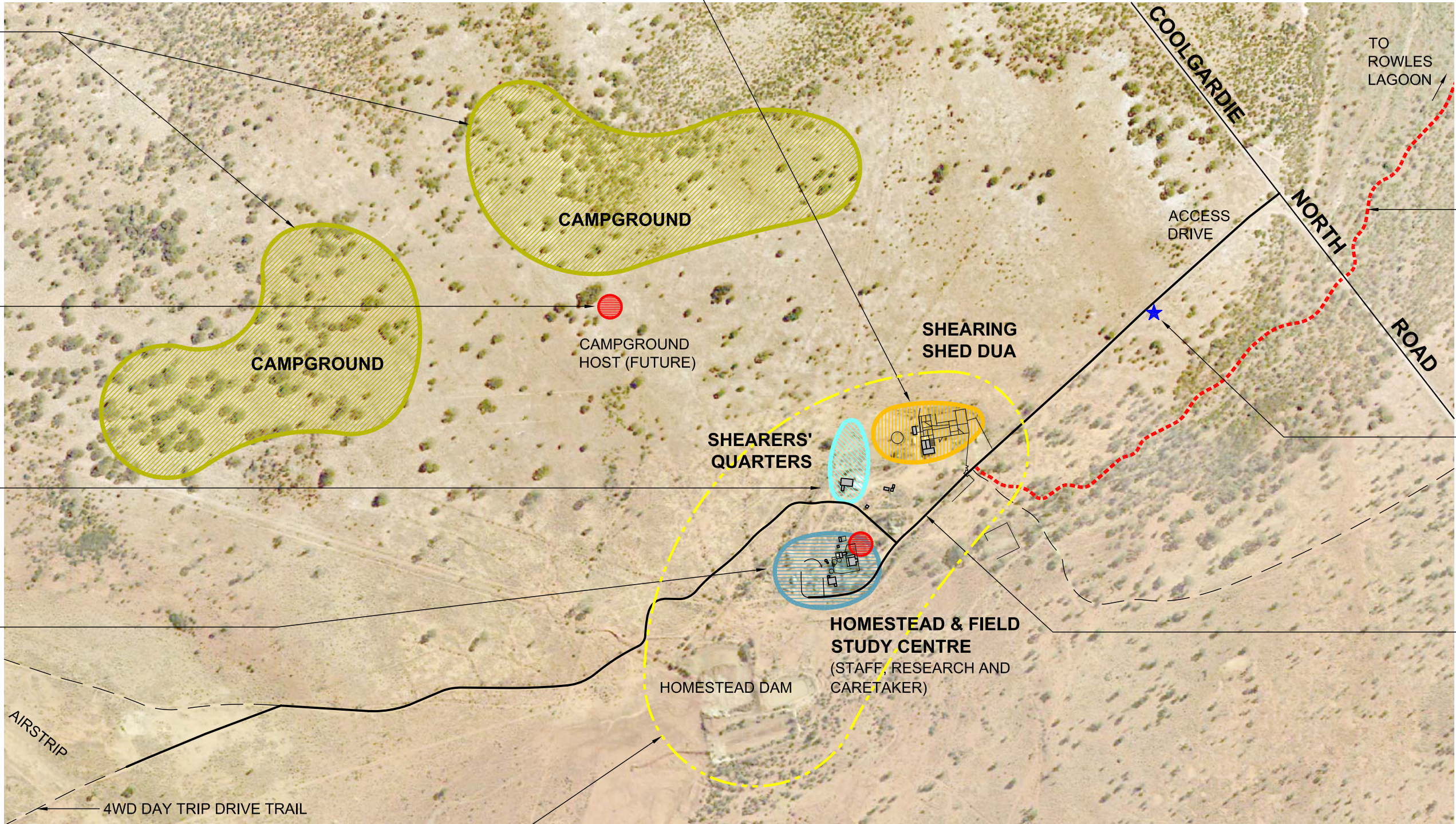
### SHEARERS' QUARTERS

- Determine future use of Shearers' Quarters dongers and associated bathroom and kitchen facilities

### HOMESTEAD & FIELD STUDY CENTRE

Staff accommodation and facilities

- Determine future use of homestead building for DEC staff in relation to zoning at homestead precinct
- Investigate suitable locations for proposed Field Study Centre and DEC staff accommodation facilities including research staff and caretakers
- Maintain basic facilities in homestead, upgrade as required
- Provide access road and parking areas
- Provide walk trail links to other facilities



### CREDO HOMESTEAD PRECINCT

#### HISTORIC PRECINCT

- Promote and protect cultural heritage values and character of site
- Provide walk trails with interpretation and exhibits
  - Consider separation of historic and contemporary elements



CREDO HOMESTEAD



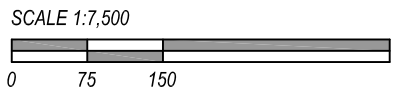
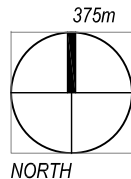
CREDO HOMESTEAD



VIEW TO WEST OF HOMESTEAD



WEST OF HOMESTEAD



### GENERAL NOTES:

- 1) DETAILED SITE ASSESSMENT STILL TO BE COMPLETED; DRAWINGS NOT FOR CONSTRUCTION.

### LEGEND

- EXISTING UNSEALED ACCESS ROAD, 2WD GRADE
- EXISTING 4WD TRACKS
- PROPOSED CYCLE/WALK TRAIL
- BUILT ACCOMMODATION - Existing accommodation and facilities at the Shearers' Quarters
- DAY USE - Proposed node with interpretation at the shearing shed
- CAMPING ZONE - Proposed camping loops for vehicle based camping
- STAFF ZONE - Staff, research and caretaker accommodation at the existing homestead and proposed Field Study Centre
- HISTORIC PRECINCT WITH INTERPRETATION, EXHIBITS AND WALK TRAILS
- PROPOSED CARETAKER AND CAMPGROUND HOST ACCOMMODATION
- PROPOSED VISITOR ORIENTATION AND INFORMATION

### PROPOSED ROWLES LAGOON WALK AND CYCLE TRAIL

### PROPOSED ORIENTATION LAY-BY

- Provide vehicle lay-by with orientation information sign
- Provide directions for caretaker/campground host enquiries

### RE-DESIGN ROAD NETWORK

- Consider road alignments in relation to visitor use zones
- Provide pedestrian zones to improve visitor safety

D	MASTER PLAN - FINAL DRAFT	11.08.2011
C	MASTER PLAN - DRAFT	02.06.2011
B	MASTER PLAN - DRAFT	11.10.2010
A	PRELIMINARY ONLY	30.06.2010
REV	DESCRIPTION	DATE



Drawing Title:

### GOONGARRIE CREDO MASTER PLAN

#### Credo Homestead Precinct

Goldfields Region

Designer/s:	Draftperson/s:	Engineer:
SW	SW	-
Date of Issue:	Checked by:	Region Approval:
11.08.2011	NG	-
Scale @ A2:	Revision:	District Approval:
1:7,500	D	-

Date:	Project Number:	Drawing:	Sheet no.
110811	G0901	Goongarrie Credo MP	6