

## RECOVERY TEAM ANNUAL REPORT

### THREATENED SPECIES AND/OR COMMUNITIES RECOVERY TEAM

#### PROGRAM INFORMATION

Recovery Team	<b>Central Wheatbelt District Threatened Flora &amp; Ecological Communities Recovery Team</b>	
Reporting Period	<b>Calendar year 2010</b>	
<b>Current membership</b>		
	<b>Member</b>	<b>Representing</b>
1. Chair	<b>David Jolliffe</b>	<b>DEC, District Nature Conservation Officer, Central Wheatbelt District, Northam</b>
2. Exec Officer (East)	<sup>1</sup> <b>Ben Lullfitz</b> <sup>2</sup> <b>Natasha Moore</b>	<sup>1</sup> <b>DEC, Conservation Officer (Flora), Central Wheatbelt District, Merredin (tenure ended 30 June 2010);</b> <sup>2</sup> <b>Caring For Country Project Officer (2010);</b> <sup>2</sup> <b>Conservation Officer (Flora / Fauna) (2011);</b>
3. Exec Officer (West)	<b>Joel Collins</b>	<b>DEC, Conservation Officer (Flora), Central Wheatbelt District, Northam</b>
4.	<sup>1</sup> <b>Alan Kietzmann</b> <sup>2</sup> <b>Mark Moore</b> <sup>3</sup> <b>Robert Blok</b>	<sup>1</sup> <b>Former District Manager, DEC Central Wheatbelt;</b> <sup>2</sup> <b>Acting District Manager, DEC Central Wheatbelt;</b> <sup>3</sup> <b>District Manager, DEC Central Wheatbelt;</b>
5.	<b>Andrew Brown</b>	<b>DEC, Coordinator – Threatened Flora, Species &amp; Communities Branch</b>
6.	<b>Andrew Crawford</b>	<b>DEC, Threatened Flora Seed Centre</b>
7.	<b>Bob Dixon</b>	<b>Manager – Biodiversity and Extensions, BGPA</b>
8.	<b>Brad Thompson</b>	<b>NRMO, Shire of Kellerberrin</b>
9.	<b>Brett Beecham</b>	<b>DEC, Regional Ecologist, Narrogin</b>
10.	<b>Bruce Eldridge</b>	<b>WestNet Rail</b>
11.	<b>Cicely Howell</b>	<b>York River Conservation Society</b>
12.	<b>Cilla Kuiper</b>	<b>Communications Officer, Wheatbelt NRM</b>
13.	<b>Dennis McDeed</b>	<b>Catalpa Resources, Westonia</b>
14.	<b>Bert Hort</b>	<b>DEC Volunteer</b>
15.	<b>Fred &amp; Jean Hort</b>	<b>DEC Volunteers</b>

15.	<b>Ian Smith</b>	<b>Wongan Ballidu Bush Care Group / DEC casual employee</b>
17.	<b>Jill Symington</b>	<b>DEC, Conservation Officer, Northam</b>
18.	<b>John Stevens</b>	<b>WestNet Rail</b>
19.	<b>Joy Fleay</b>	<b>York Wildflower Society</b>
20.	<b>Kara Hatch</b>	<b>NRMO, Shires of Westonia &amp; Yilgarn</b>
21.	<b>Kezia Pontifex</b>	<b>Goomalling/Dowerin Community Landcare Officer</b>
22.	<b>Leonie Monks</b>	<b>DEC, Science Division</b>
23.	<b>Luc Cotte</b>	<b>St Barbara Mining Ltd, Southern Cross</b>
24.	<b>Lyn Phillips</b>	<b>Wongan Ballidu Bush Care Group / DEC casual employee</b>
25.	<b>Margaret Redfern (contract finished)</b>	<b>Conservation Officer DEC Avon Mortlock</b>
26.	<b>Mark Brundrett</b>	<b>UWA, Research Scientist</b>
27.	<b>Mary Squire</b>	<b>Mukinbudin Conservation Group</b>
28.	<b>Melanie Smith</b>	<b>Senior Botanist DEC Kensington</b>
29.	<b>Mike Griffiths</b>	<b>WWF Australia Project Officer, Northam</b>
30.	<b>Natasha Moore</b>	<b>DEC, Conservation Officer, Merredin</b>
31.	<b>Nigel Rowe</b>	<b>Main Roads</b>
32.	<b>Peter Bothwell</b>	<b>WestNet Rail</b>
33.	<b>Peter Smyth</b>	<b>WestNet Rail</b>
34.	<b>Phil Knapton</b>	<b>Western Areas NL, Forrestania</b>
35.	<b>Phil Lewis</b>	<b>WWF Australia Project Officer, Northam</b>
36.	<b>Rebecca Palumbo</b>	<b>Wheatbelt NRM</b>
37.	<b>Rob Waller</b>	<b>Water Corporation, Wyalkatchem</b>
38.	<b>Robert Boase</b>	<b>Community member (Dowerin)</b>
39.	<b>Sally Rayner</b>	<b>NRMO, Shire of Bruce Rock</b>
40.	<b>Samantha Pickering</b>	<b>NRMO, Shires Of Nungarin &amp; Trayning</b>

41.	Simon Weighell	MRWA, Goldfields-Esperance Region
42.	Sonya Thomas	Wongan Ballidu Bush Care Group / DEC casual employee
43.	Tobias Vudzijena	NRMO, Shire of Merredin
44.	Todd Gibson	MRWA, Wheatbelt North Region
45.	Wendy Chow	DEC, Project Officer (TEC/PEC), Species & Communities Branch
46.	Whispie Bayly	Mukinbudin Conservation Group
<b>Dates meetings were held</b>	30 June 2010 (Tammin) and 29 March *2011 (Dowerin) * the majority of work reported to the recovery team at this meeting was undertaken in the 2010 calendar year.	
<b>*Summary of achievements suitable for WATSNU</b>	<p>The following include some of the many noteworthy flora threatened flora and communities recovery actions successfully undertaken by Central Wheatbelt District (CWD) staff during 2010:</p> <ul style="list-style-type: none"> <li>• New Declared Rare Flora (DRF) populations discovered for seven Critically Endangered species, seven Endangered species and two Vulnerable taxa.</li> <li>• New Priority flora populations were also discovered and surveyed, and includes 11 Priority One, seven Priority 2, six Priority 3 and one Priority 4 flora species.</li> <li>• Field assessments for approximately 95 % of the CWD's EPBC-listed Declared Rare Flora populations (201 populations &amp; 35 species) have been completed as part of the Districts Commonwealth-funded CfoC "Reducing impacts of Rabbits to regenerate threatened flora, communities and critical habitat" 3 year project.</li> <li>• A total of 11 km`s of Rabbit proof fences were erected around five populations of five Declared Rare Flora species.</li> <li>• 1080 baiting for Rabbit control have been undertaken for 5500 ha of Declared Rare Flora critical habitat;</li> <li>• Seed collection undertaken for 4 Declared Rare Flora species (3 critically threatened spp and 1 endangered spp);</li> <li>• Two priority flora species nominated for Declared Rare Flora status;</li> <li>• Conservation status of one species successfully upgraded to a Priority 1 species;</li> <li>• Cryostorage undertaken for 1 Critically Endangered Declared Rare Flora species;</li> <li>• Rabbit warrens fumigation/destruction completed near ~20 threatened flora populations located in Nature Reserves, private property and shire road verges;</li> <li>• Land managers, shires, youth and volunteers have been engaged in rabbit control activities (Rabbit fumigating, baiting, fencing) and/or monitoring of threatened flora;</li> <li>• Rabbit control &amp; project information was disseminated to participants and community members at the Dowerin Field day and Mukabudin Symposium in 2010;</li> <li>• CfoC "Reducing impacts of Rabbits to regenerate threatened flora, communities and critical habitat" project posters, and a rabbit control calendar were printed for such events and as an engagement tool for land managers.</li> <li>• A regional geodatabase (GIS) has been created under the CFOC project to record spatial records of project works and field data relating to threatened flora</li> </ul>	

	<p>populations, threats and management activities for all 201 sites under this project;</p> <ul style="list-style-type: none"> <li>• Invertebrate sampling undertaken at 4 different sites in the Avon Deep Pools Priority 1 Priority Ecological Community. Results indicate that the invertebrate species in each pool have altered – these systems are chronically ill but not dying;</li> <li>• Adaptive management sites are currently being created under the CfoC project to test the effectiveness of various recovery treatments for threatened flora populations;</li> <li>• Fire management guidelines have been drafted by Erica Shedley for four Declared Rare Flora species (3 CR &amp; 1 EN spp) that occur in the CWD; and</li> <li>• Natham McQuoid (Consultant) compiled a report on the post-fire management response for 5 Declared Rare Flora species in the CWD.</li> </ul>

\***Attachments 1 -2** (summary of the recovery team minutes for the June 2010 and March 2011 meetings provide additional details).

**Attachment 3** provide a full list of the 617 Declared rare Flora and Priority Flora species that occur within the Central Wheatbelt District.

**ATTACHMENT 1 – 30 JUNE 2010 THREATNED FLORA AND ECOLOGICAL  
COMMUNITIES RECOVERY TEAM MEETING MINUTES**

**Central Wheatbelt District Threatened Flora and Communities Recovery Team Meeting**

10.30 am 30<sup>th</sup> June 2010

Venue: Tammin Bowling Club, Tammin.

**1. Welcome and Introductions**

David Jolliffe opened the meeting and welcomed all members of the recovery team. David made the point that this is the first meeting held for the Central Wheatbelt District (CWD) which is a combination of the old Yilgarn and Avon-Mortlock District Recovery Teams. David welcomed new staff members - Natasha Moore and Mal Harper who are assisting with the Caring for our Country Wheatbelt Rabbit Project. All members of the recovery team introduced themselves.

The recovery team members have agreed that the Yilgarn and Avon-Mortlock District Recovery Teams be combined to form the Central Wheatbelt District Recovery Team. David Jolliffe and Conservation Officers to discuss and finalise members for the new CWD Recovery Team.

There will be two meetings held per year, one of which hosted by the Merredin office and one hosted by the Northam office.

David also indicated that according to a list provided to him by Joel Collins and Ben Lullfitz, the Central Wheatbelt District now has 617 spp of threatened and priority flora species (following the amalgamation of the Avon-Mortlock and Yilgarn Districts). The number of Declared Flora species in the combined district now totals 94 species (almost 24 % of the whole of Western Australia's declared rare flora species occur in the Central Wheatbelt District !

The conservation status of the 617 spp is as follows:

TOTAL Declared Rare Flora = CR (34) + EN (29) + VU (30) + X (1) = 94 species

TOTAL Priority Flora = P1 (133) + P2 (100) + P3 (204) + P4 (87) = 524 species

**TOTAL DRF (94 spp) and Priority Flora (524 spp) = 618 species**

The CWD also has 14 Priority Ecological Communities and one small representative of a threatened ecological community.

Total TEC = 1 (occurrence 2 of of Perched Freshwater Wetlands (Toolibin) (17.7 ha) which occurs on a freehold property in Shire of Dowerin

Total PECs = 14 (10 of which are Priority 1 PECs)

**Total TECs (1) & PECs (14) = 15**

**2. Conservation Officer's Report (Ben Lullfitz)**

a. DRF Monitoring (Non-CfoC Project)

- Monitored 5 populations of DRF;
- Monitored 5 populations of priority flora;
- *Caladenia drakeoides* - New population at Jouerdine Rock consists of 49 plants (October 2009). This is the north-eastern most population ca. 75km southeast of the nearest population with is north

of Beacon. Population actually occurs on top of a granite outcrop so this opens up a whole range of new areas to search for new populations on outcrops.

b. *Daviesia microcarpa* induced recruitment trial

- Monitoring done in October 2009 found a single seedling had germinated 2nd year post burn;
- Watered over summer;
- Provided brushing to create cover over summer;
- Still healthy and growing well in June 2010.

c. *Philothea basistyla* recruitment trial

- Monitoring in October found all recruitment occurred in the 3 burn plots;
- A large range of seedlings from different species germinated;
- By December a rabbit had burrowed under one of the exclusion fences which grazed everything within one plot and parrots had grazed all seedlings in the other plots;
- Need to install bird netting for future trials.

d. *Acacia sciophanes* recruitment trial

- Majority of plants within population reaching senescence – many dead plants;
- Proposal written in April to burn a 99.4 ha block of Wundowlin Nature Reserve;
- Burn was conducted on the 20th of May 2010;
- Approximately 20% of the population burnt
- Southern side of Wundowlin NR baited for rabbits prior to burn;
- 6 permanent monitoring plots installed;
- 4 of 6 plots within burn area;
- 2 of 6 plots excluded from the burn;
- 3 plots fenced, 3 unfenced to effect of grazing;
- Plots will be monitored in Spring 2010 to determine if successful recruitment has occurred.

e. Seed Collection

- *Tetratheca deltoidea* - 71 seeds collected in December 2009 from population 1 and sent to TFSC;
- *Acacia sciophanes* - 1000s (5g) of seed collected in January 2010 from a plant to be destroyed (population 1B) by Shire of Mukinbudin. Propagation material also sent to Amanda Shade at BGPA.
- *Philothea basistyla* - Only 6 seeds collected from population 2A in December 2010 and forwarded to TFSC. Really poor seed set in 2009. Only 68 seeds in storage at TFSC. To collect more in 2010.
- *Eremophila viscida* - 350 fruit collected from population 12C in February 2010 and forwarded to TFSC.

f. DRF Fencing

- Funding from the Commonwealth for recovery actions for EPBC listed species to fence population 2 of *Acacia sciophanes*. Unfortunately the land holders were not willing to allow fencing of these populations. A variation of contract was requested to fence 2 populations of *Eremophila viscida* and 2 populations of *Eremophila virens* instead;
- 9 km of fencing installed around two populations of *Eremophila viscida* and two populations of *Eremophila virens* on private property in the Shire of Westonia.

g. *Symonanthus bancroftii* translocations

- Sites are visited regularly to maintain the watering system (fix leaks etc);
- Both sites have automatic watering systems connected directly to the mains.

h. New Populations/Re-locations

- *Frankenia conferta* (Vulnerable) new population consisting of 100s of plants located in Karroun Hill Nature Reserve in the Shire of Mt Marshall;
- *Goodenia heatheriana* (Priority One) re-located the population first collected by Ken Newbey in 1979 south of Marvel Loch in the Shire of Yilgarn;
- *Millotia newbeyi* (Priority One) re-located the population first collected by Ken Newbey in 1979 south of Marvel Loch in the Shire of Yilgarn;

- *Baeckea* sp. Berringbooding (Priority One) new population consisting of 10 plants located at Jouerdine Rock in the Shire of Mukinbudin;
- *Chorizema circinale* (Priority Two) re-located the population near Bounty mine site in the Shire of Yilgarn;
- *Millotia pilosa* (Priority 2) new population consisting of over 50 plants located at Mt Caroline in the Shire of Kellerberrin.

i. Mukinbudin Regional Herbarium – Collections of Conservation Significance

- *Melaleuca sciotostyla* (EN) new population in Mt Marshall Shire. There has recently been a number of *Melaleuca haplantha* collections re-identified as *M. sciotostyla*. Further taxonomic work may lead to the down grading of *Melaleuca sciotostyla*;
- *Dampiera* sp. collected by Mary Squire. Mike Hislop suggests this most probably represents a new taxon from the Mukinbudin-Beacon area;
- *Acacia lanei* (Priority 1) collected in Shire of Mukinbudin by Mary Squire. Significant range extension. Previous collections are from the Hyden area;
- *Dampiera scaevolina* (Priority 1) new population in Mt Marshall Shire;
- *Hakea rigida* (P2) new population in Mt Marshall Shire;
- Two new locations of *Euryomyrtus leptospermoides* (Priority 3).

### 3. Conservation Officers Report (Joel Collins)

a. New Flora Additions - 2009 Central Wheatbelt Threatened Flora & Communities Annual Report – Changes in threatened flora list

- **41** new taxa added;
  - *Acacia leptoneura* (P1)
  - *Aotus* sp. Cunderdin (B.J. Lepschi et al 3587) (P1)
  - *Arthropodium* sp. Yenyenning (G.J. Keighery & N. Gibson 2957) (P1)
  - *Baeckea* sp. Tampia Hill (J.C. Anway 327) (P1)
  - *Banksia rufa* subsp. *tutanningensis* (P2)
  - *Beyeria apiculata* (P1)
  - *Beyeria constellata* (P1)
  - *Beyeria disciformis* (P1)
  - *Caladenia speciosa* (P4)
  - *Calytrix acutifolia* subsp. *brevifolia* (P1)
  - *Commersonia* sp. Bindoon (C. Wilkins & F. & J. Hort CW 2155) (P1)
  - *Dampiera triloba* (P1)
  - *Daviesia smithiorum* (P2)
  - *Dillwynia* sp. Capel (P.A. Jurjevich 1771) (P1)
  - *Eremophila glabra* subsp. *Kokeby* (R. Davis 5080) (P1)
  - *Eremophila glabra* subsp. *York* (P. G. Wilson 12172) (P1)
  - *Eremophila* sp. Beverley (K. Kershaw KK 2438) (P1)
  - *Eucalyptus* sp. Mukinbudin (D. Nicole & M. French DN 3486) (P1)
  - *Eutaxia rubricarina* (P3)
  - *Gastrolobium densifolium* (P4)
  - *Gastrolobium rotundifolium* (P3)
  - *Glyceria drummondii* (EN)
  - *Gnephosis multiflora* (P3)
  - *Isolepis australiensis* (P3)
  - *Lepidosperma diurnum* (P1)
  - *Lepidosperma* sp. Mt Caudan (N. Gibson & M. Lyons 2081) (P1)
  - *Lilaeopsis polyantha* (P2)
  - *Melaleuca barlowii* (P3)
  - *Millotia tenuifolia* var. *laevis* (P2)
  - *Opercularia rubioides* (P3)
  - *Oxymyrrhine plicata* (P3)
  - *Petrophile* sp. Pithara (P. Armstrong s.n. PERTH 06592090) (P3)
  - *Petrophile trifurcata* (P2)

- *Philothea* sp. Mukinbudin (M. Hancock s.n. 08/09/1999) (P1)
- *Rhodanthe pyrethrum* (P3)
- *Stylidium* sp. Moora (J.A. Wege 713) (P2)
- *Stylidium tenuicarpum* (P4)
- *Styphelia* sp. Bullfinch (M.Hislop 3574) (P3)
- *Synaphea grandis* (P4)
- *Tecticornia fimbriata* (P3)
- *Tecticornia* sp. Lake Wallambin (K.A. Shepherd 1191) (P1)
- *Tetratheca plumosa* (P1)
- *Thelymitra apiculata* (P4)
- *Thomasia montana* (VU)
- *Verticordia lindleyi* subsp. *lindleyi* (P4)
- *Verticordia paludosa* (P4)
- 9 taxa deleted;
  - *Blennospora phlegmatocarpa* (formally P3)
  - *Boronia penicillata* (P3)
  - *Eucalyptus caesia* subsp. *magna* (formally P4)
  - *Eucalyptus latens* (P4)
  - *Microcorys lenticularis* (formally P2)
  - *Phlegmatospermum drummondii* (formally P3)
  - *Ptilotus halophilus* (P4)
  - *Triglochin stowardii* (formally P3)
  - *Wurmbea drummondii* (formally P4)
- 24 taxa with change in conservation ranking;
  - *Baeckea* sp. Parker Range (M Hislop & F Hort MH2968) (P3)
  - *Caladenia cristata* (P1)
  - *Dillwynia acerosa* (P3)
  - *Eremophila adenotricha* (P1)
  - *Eucalyptus subangusta* subsp. *virescens* (P3)
  - *Eutaxia actinophylla* (P3)
  - *Gastrolobium rotundifolium* (P3)
  - *Haegiela tatei* (P4)
  - *Hibbertia glabriuscula* (P3)
  - *Isolepis australiensis* (P3)
  - *Keraudrenia adenogyna* ms (P3)
  - *Lepidium genistoides* (P3)
  - *Leucopogon* sp. Bungulla (R.D. Royce 3435) (P3)
  - *Opercularia rubioides* (P3)
  - *Phebalium drummondii* (P3)
  - *Podotheca pritzelii* (P3)
  - *Pseudactinia* sp. Bungalbin Hill (FH & MP Mollemans 3069) (P3)
  - *Schoenus capillifolius* (P3)
  - *Schoenus griffinianus* (P3)
  - *Stylidium choreanthum* (P3)
  - *Stylidium sejunctum* (P3)
  - *Synaphea tripartita* (P3)
  - *Tricoryne* sp. Morawa (GJ Keighery & N Gibson 6759) (P3)
  - *Xanthoparmelia nashii* (P3)
- 1 taxa added due to range extension;
  - *Lysiosepalum aromaticum* (P2)

b. Caring for Country Project - Reducing impacts of rabbits to regenerate threatened flora, communities and critical habitat 2009-2012

- 79 populations in 'Central Zone'
- 4 Critically Endangered, 3 Endangered and 1 Vulnerable Taxa
- Populations prioritised based on threats, population size and tenure
- Letters sent out to landholders



- 1080 baiting - 8 populations, 23.8 km trails, 1052 ha
- 19 populations monitored
- c. EPBC Threatened Species Project - June 2009 – May 2010
  - 5 Critically Endangered Taxa
  - Recovery actions:
    - Weed control for *Eremophila pinnatifida*
    - Survey and monitoring for *Haloragis platycarpa*
    - Restocking of *Acacia volubilis* translocation (82 seedlings)
    - Restocking of *Daviesia cunderdin* translocation (63 seedlings)
    - Recruitment burns for *Pityrodia scabra* and *Daviesia cunderdin* (May 2010)

d. *Acacia leptoneura* update

- Further surveys this season in the Dowerin and Victoria Plains Shires
- Nomination to Declared Rare Flora status after completion of surveys
- Currently listed as Priority 1
- Extensive media attention including newspaper and radio interviews on ABC 720

e. New threatened flora populations

- Rediscovery of *Scholtzia eatoniana* Priority 1
  - Last collected in 1979
  - South of Cunderdin – upslope from drainage line
  - Roadside population of 3 plants
  - Survey small adjoining private property remnant
  - Flowers in November
- *Lysiosepalum aromaticum* (Priority 2)
  - Small population east of Goomalling
  - Base of granite
  - Range extension 300 km north from Highbury
  - Flowers in August-September
- *Jacksonia pungens* – west of Dalwallinu, 33 plants
- *Stylidium coroniforme* subsp. *coroniforme* – Wongan Hills
- *Eremophila ternifolia* – Wongan Hills
- *Acacia pygmaea* – Wongan Hills
- *Rhagodia acicularis* – Wongan Hills
- *Acacia dura* (P2) – Wongan Hills
- *Melaleuca sclerophylla* – Wongan Hills
- *Guichenotia seorisflora* – Pantapin
- *Acacia trinalis* (P1) – 2 populations Goomalling
- *Acacia ataxiphylla* subsp. *magna* – Goomalling
- *Acacia campylophylla* (P3) - Goomalling

#### 4. Conservation Officers Report (Natasha Moore)

a. Caring for Our Country “*Reducing impacts of rabbits to regenerate threatened flora, communities and critical habitat*”. Project report for the Central and Eastern Wheatbelt

- Project Objectives – this project will
- reduce rabbit populations to levels that allow the regeneration of critically endangered and endangered flora and communities.
- integrate other management activities, particularly weed control and fire, to promote regeneration and recruitment.
- monitor the condition of the critical habitat to evaluate the benefits of rabbit control in the regeneration and recovery of the associated vegetation.
- target 35 EPBC-listed threatened flora and one threatened community identified as being at risk from feral rabbits.
- The 35 species occur in approximately 320 populations, predominantly within the Avon Wheatbelt 1 and 2, and Mallee 2 IBRA Subregions.

- These populations occur on a variety of land tenures, with nearly 30% occurring on private property, 33% on road reserves managed by local government, and about 19% within the formal conservation reserve system. The remaining populations occur on other crown lands.
- An additional 22 EPBC-listed threatened flora (totaling 80 populations) occur within a 1 km radius of the listed species. Therefore rabbit control activities at these sites is expected to have a significant benefit for a suite of additional EPBC-listed flora across a broader landscape scale.
- The project will integrate a variety of rabbit control methods such as baiting, warren fumigation and
- ripping, and exclusion fencing along with weed control, physical soil disturbance, and fire where
- necessary to encourage recruitment and regeneration of populations, communities and their critical habitat.
- This project will enable implementation of elements of current Recovery Plans that have not been achievable to date.

#### b. Work to date

- Completed flora surveys and rabbit assessments of 47 out of 52 populations (10 species)
- Conducted weed control and fumigation at worst affected sites
- Currently investigating a release of RCD at worst rabbit affected location (*B. cuneata* pop 10)
- 2,500 ha baited with 1080 oats summer 2010
- propose to increase this to 3,000ha during summer 2011
- 2 recruitment burn proposals in draft (*P. basistyla* & *A. ataxiphylla* subsp. *magna*)
- 2 translocation proposals in draft (*P. basistyla* & *B. cuneata*)

#### c. Species Profiles – Central and Eastern Wheatbelt

- *Ptilotus fasciculatus*
  - several populations sparsely spread (except for Yenyening Lakes NR) through the Salt River complex
  - One new population discovered near Yarding wheatbin
- *Banksia cuneata*
  - all populations in this study are in decline (except for Pop 6 in the Quairading Cemetery reserve)
  - Seem able to recruit naturally if successfully fenced from rabbits
- *Hakea aculeata*
  - Populations seem fairly stable over time even though highly impacted by rabbit activity
  - However there is no evidence of recruitment (seedling or vegetative) occurring at these sites
- *Philotheca basistyla*
  - Pop 1 is now extinct
  - Pop2 currently has 20 live plants remaining – an 89% reduction in population over 4 years
  - Recruitment burns last season indicate that fire is a useful recruitment tool if seedlings can be protected from grazing (parrots and rabbits)
  - Species is in need of *urgent* recovery actions
  - Further burning plots for Autumn 2011 and a translocation proposal are in draft
- *Acacia volubilis*
  - plants occur in highly degraded narrow road verge
  - Recent survey has extended this population from 3 to 5 plants
- *Acacia ataxiphylla* subsp. *magna*
  - populations are mostly in highly vulnerable road verges
- *Tetralochea deltoidea*
  - plants numbers have declined since discovery but remaining plants seem to be doing well
  - Seed collection and plans to replace fencing is in progress
- *Frankenia parvula*
  - monitoring & assessments of these populations due early this summer
- *Myriophyllum lapidicola*
  - further surveys this winter will monitor known locations

- continue searches for pop 6 and pop 4 which is thought to be extinct
- *Calectasia pignattiana*
  - The population at the Quairading Cemetery reserve seems to be stable
  - a Spring 2010 survey will determine current plant numbers and distribution more accurately.
- *Caladenia drakeoides*
  - A recently discovered population at Jouerdine Rock has extended its range further east
  - Further surveys this spring (which is shaping to be a better season?) will consolidate known distribution, population size and potential threats.

## 5. Conservation Officers Report (Jill Symington)

### a. Reducing impacts of rabbits to regenerate threatened flora, communities & critical habitat – WA Wheatbelt, North Zone Sites

- Zone includes shires of – Victoria Plains (west) Wongan-Ballidu & Koorda (south), Dalwallinu & Mt Marshall (north)
- 8 species, a total of 54 populations
- Variety of habitat types - sandy plains, salt lakes, break aways and rocky country

### b. North Zone Species

- *Chorizema humile* (Prostrate Flame Pea)
- *Darwinia carnea* (Mogumber Bell)
- *Daviesia euphorbioides* (Wongan Cactus)
- *Caladenia drakeoides* (Hinged Dragon Orchid)
- *Frankenia conferta* (Silky Frankenia)
- *Grevillea pythara* (Pythara Grevillea)
- *Gyrostemon reticulatus* (Net-veined Gyrostemon) – pop appears extinct.
- *Stylidium coroniforme ssp. coroniforme* (Wongan Trigger Plant).
  - Rabbit monitoring completed at most pops
  - detailed population counts completed for *Chorizema humile*, *Darwinia carnea* and *Daviesia euphorbioides*
  - Remaining species require further population survey due to difficulty finding at survey time of year (summer/autumn), dormancy and time constraints – e.g. Methodology needs decided to count *Grevillea* which grows in continuous clumps (cant pick individuals)

### c. On-ground works to date

- Approximately 815ha has been baited with 1080 oats
- Baiting included areas 16 (sub)-pops – *Stylidium*, *Daviesia* & *Caladenia*
- Rabbit monitoring completed at 50 pops – inc. warrens identified
- DRF populations surveyed where possible
- Threats identified for possible management actions

### d. *Darwinia carnea* (Mogumber Bell) Survey findings

- 1st sub-pop (some caged):
  - Condition - healthy to senescent
  - Little recruitment; some dead
  - Pop decline: 2005 - 34 mature 2010 – total 27 (23 mat, 4 juv).
- 2nd sub-pop
  - small number but healthy plants (some past grazing evident though)
  - Pop decline: 1995 – total 40 (10 mat, 30 seedlings); 2010 – total 7 (3 mature, 2 juvenile, 1 seedling)
- 3rd sub-pop
  - Healthy plants, some grazing but not impacting severely
  - Population increase: 2005 – 45 mature 2010 – total 69 (32 mat, 27 juv, 10 seedlings)

- Threats -
  - Rabbit & kangaroo grazing (plants grazed, rabbit activity-all sub-pops)
  - Low recruitment & natural senescence of older plants (1st sub-pop)
  - Lack of disturbance (seen on edge of tracks – 2 locations)
- Potential management actions –
  - Baiting and warren destruction
  - Rabbit & kangaroo-proof small fencing trials
  - Recruitment burn trial
  - Future surveys to check for flower set & seed collection

e. *Daviesia euphorbioides* (Wongan Cactus) Survey findings

- 7 populations (inc sub-pops), 2 road verge pops likely extinct
- Plants in varying degrees of condition – healthy to senescent; old, dead plants in most populations
- 2 recruitment burn trials have already been done at two populations in past with seedling germination occurring
- Outside burn trials – very few/no seedlings.
- Rabbit activity present in most populations, including warrens. Plant grazing noted at most populations
- parasitic ‘strangle’ vine (*Cuscata* or *Cassytha* sp) heavy coverage on many plants
- Rabbit control actions completed
  - 5 (sub)-pops were baited in April 2010
- Potential management actions
  - Baiting
  - Warren fumigation/ripping
  - Recruitment burn trial
  - Weed control trial - parasitic ‘strangle’ vine (*Cuscata* or *Cassytha* sp)

f. *Chorizema humile* (Prostrate Flame Pea) – Survey findings

- All plants individually caged with rabbit proof fencing; irrigation.
- Total of 296 cages – 241 plants were alive (81%), most were healthy, few in moderate condition.
- Threats
  - Competition - established native vegetation (some deaths)
  - Some kangaroo scats
- Potential management actions
  - Further monitoring for condition, weeds - competition?

g. *Caladenia drakeoides* (Hinged Dragon Orchid) – survey findings

- Potential threats
  - Rising salinity
  - Altered hydrology
  - Grazing – rabbits, kangaroos, stock
  - Habitat degradation?
- Rabbit activity
  - 12 out of 14 sites had rabbit activity –high at most sites (inc. multiple active warrens).
  - No signs of rabbits at 2 sites, however, high kangaroo traffic
- Rabbit control actions completed
  - 1080 baiting was done in Autumn at a site covering 3 sub-pops
- Potential management actions
  - All populations to be resurveyed in late Aug-Sep
  - Installation of rabbit fencing and/or kangaroo proof cages - some sites
  - Warren fumigation & destruction; baiting in Summer/Autumn 2011 - multiple sites

h. *Frankenia conferta* (Silky Frankenia) Survey findings

- Populations appear extensive
- Low-medium rabbit activity at most sites,

- Some grazing occurring.
- Threats – rising salinity & grazing (roos & rabbits)
- Future management actions
  - Resurvey at flowering time and install transects/quadrats to extrapolate population numbers
  - Install rabbit fencing trial plots at sites with greater rabbit activity

i. *Grevillea pythara* (Pythara Grevillea) Survey findings

- Plants at 2 sub-pops were healthy, no plants found at nearby 3rd sub-pop location
- Populations have a low stock fence however, signs of kangaroos & some rabbit activity found
- Some weeds present
- Future management actions
  - Resurvey to establish population counts.
  - Potentially install rabbit proof fencing or small fencing trials
  - Destroy old warrens
  - Possibly bait - adjoining property
  - Weed control

j. *Stylidium coroniforme ssp. coroniforme* (Wongan Trigger Plant) Survey findings

- Short lived species that appears after disturbance – fire, grading
- Populations that were found – grazed (roos/rabbits)
- Areas of 8 sub-pops were baited in Autumn
- Future Management actions
  - Resurvey in Spring
  - Fence grazed sites
  - Fumigate nearby warrens
  - Baiting Summer/Autumn

## 6. Threatened / priority ecological community update (Wendy Chow)

a. *Banksia prionotes* and *Xylomelum angustifolium* low woodlands on transported yellow sands (Low level Sandplains) – Spring 2009

- 2 occurrences were surveyed in the Quairading area with WWF -Awaiting identifications from the herbarium
- 2010 hydrological report -a copy will be given to the District
- **Future work** - Locate more occurrences with assistance from district staff

b. Deep pools of the Avon Botanical District

- Sampling undertaken at four sites - mainly in summer as this was when the pools were most likely to be acting as refuges from drying conditions in the non-pool channels.
- All of the pools were sampled on four occasions in late spring or summer between February 2007 and December 2008.
- Methods
  - Invertebrates were collected by sweeping a 250µm mesh net through the littoral water column, disturbed sediments, aquatic plants and riparian vegetation.
  - Each sample consisted of 60 sweeps.
  - Water parameters such as: conductivity, pH, oxygen, water temperature and turbidity were measured in the field.
  - Nutrient and chlorophyll concentrations were analysed in the laboratory by the Maine and Freshwater laboratory at Murdoch University.
- Description of the Pools
- Wilberforce Pool on the Avon River
  - ~ 800m reduced in size since the 1960s
  - is located approximately 14km south east of Northam
  - The bed of this pool is mostly clay and sedimentation has been minimal
  - The pool has a narrow band of riparian vegetation but it is grazed and in poor condition with little understory.

- Gwambygine Pool on the Avon River
  - ~ 1km long and around 4m deep making this the deepest pool upstream of York
  - is located approximately 13km south of York.
  - Sediments are mostly silt and clay except upstream where a sand slug is present.
  - Sediment has been excavated from the pool twice - in May 1996 and May 1999.
  - The pool is surrounded by cleared farmland and has a very narrow riparian zone.
- Mile Pool
  - ~ 400m long
  - is approximately 14km upstream of the Avon-Dale confluence, between the Westdale Road Bridge
  - Is a braided channel section.
- Deep Pool on the Dale River
  - ~ 350m long
  - is located 16km upstream of the Dale-Avon confluence between two braided channel sections.
  - This reach of river has a very narrow band of riparian vegetation.
- Findings of the latest report by Adrian Pinder 2009
  - Avon and Dale river systems were most likely fresh prior to settlement
  - However the Avon is now mostly brackish to saline, while the Dale is less saline
  - These systems are highly disturbed, and it is difficult to determine what species have been lost following salinisation
  - The decline in species richness is relative to increasing salinity levels, this decline is probably occurring in both rivers. It is suggested that 80% of all species may have been lost
- Conclusion
  - Salinity is probably stable (needs further study)
  - Sedimentation and weeds are additional threats
  - Pools species have altered - these systems are chronically ill but not dying
  - There is still some biological value in pools
  - Dale river is in better condition
  - It is unlikely that the same combination of species occur in other rivers

### **Eremophila resinosa translocation at the Catalpa Mine in Westonia update (Bob Dixon from Kings Park)**

The last visit to the sites, June 15<sup>th</sup> and 16<sup>th</sup>, indicated the translocations are performing very well. **Total living plants on all 3 sites 2075** – this is a provisional figure as the data has not been analysed.

Kings Park will continue to work closely with Catalpa Resources, DEC and Westonia Shire to ensure a positive outcome for this project

BGPA continues to work closely with DEC on this project.

Meeting closed at 1:00pm

Following the meeting recovery team members visited the *Acacia subflexuosa* subsp. *capillata* translocation in Charles Gardner Nature Reserve and visited the 'Wheatbelt Mottlecah Priority Ecological Community south of Tammin.

**ATTACHMENT 2:** 29<sup>th</sup> MARCH 2011 THREATENED FLORA AND ECOLOGICAL COMMUNITIES RECOVERY TEAM MEETINGS

10.00 am 29<sup>th</sup> March 2011

Venue: Dowerin Community Resource Centre, Dowerin

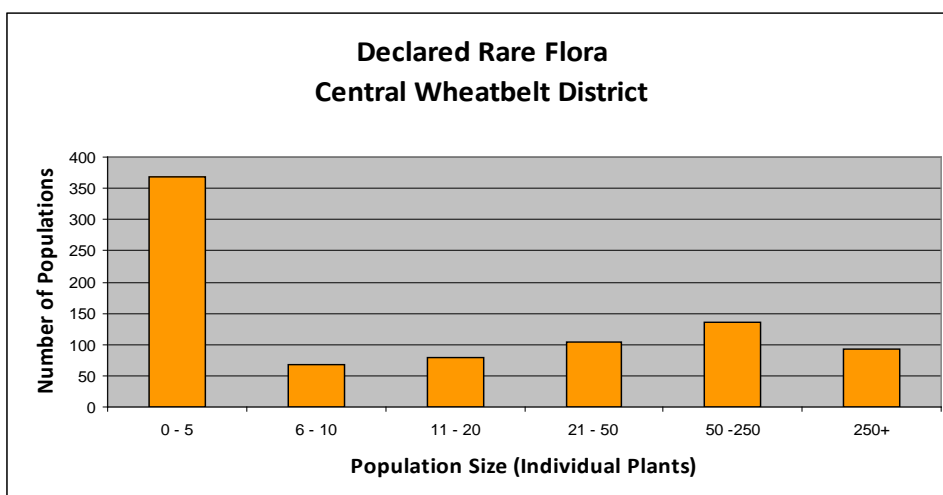
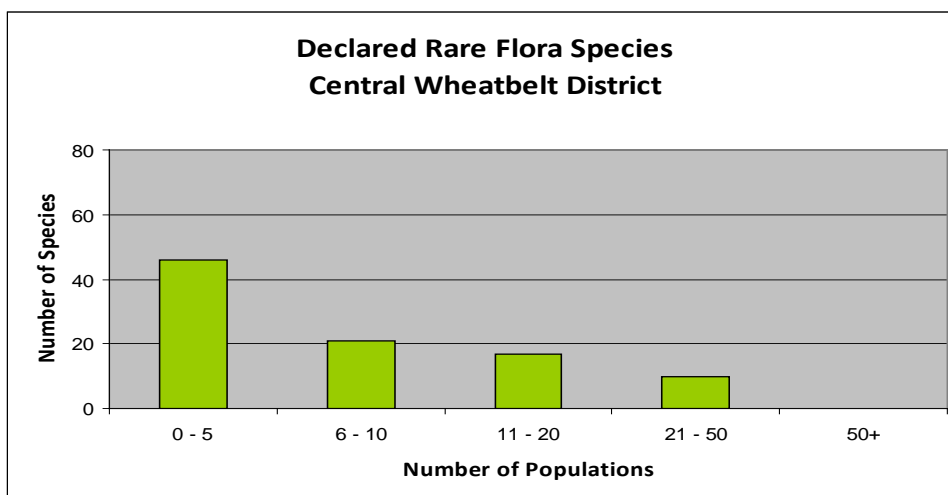
**1. Welcome and Introductions**

David Jolliffe opened the meeting and welcomed all members of the recovery team. David welcomed new staff member - Natasha Moore (Conservation Officer Flora and Fauna). All members of the recovery team introduced themselves.

**2. Conservation Officer's Report (Joel Collins & David Jolliffe)**

Threatened Flora Statistics

- 94 Declared Rare Flora Species
- **67% of critically endangered taxa endemic to the district**
- Highly localised often represented by small declining populations



(DEC Declared Flora Database September 2010)

Caring for Country Project Update

- 1080 baiting Hindmarsh Nature Reserve
- Rabbit-proof fencing of *Verticordia hughanii* population 1 – Hindmarsh NR 450m
- Rabbit-proof fencing *Thomasia glabripetala* population 6A Meenaar Nature Reserve – 300m
- Monitoring Forms & Database

## Translocations Update

- Reticulation this summer for 4 translocation sites
  - *Grevillea dryandroides* subsp. *dryandroides*
  - *Acacia subflexuosa* subsp. *capillata*
  - *Lysiosepalum abollatum*
  - *Acacia volubilis/Daviesia cunderdin*

## *Acacia leptoneura* Update

- Nominated for DRF (Critically Endangered)
- 1 additional plant found on private property

## New Populations discovered June 10 – March 2011

New Populations			
Species	Status	Location	Plants
<i>Acacia campylophylla</i>	P3	4 populations in Goomalling, Dowerin and Cunderdin, road verges	20
<i>Acacia cochlocarpa</i> subsp. <i>cochlocarpa</i>	DRF	South of Cunderdin, road verge	1
<i>Acacia leptoneura</i>	P1	North of Dowerin, private property	1
<i>Acacia scalena</i>	P4	East of Wongan-Ballidu, road verge	5
<i>Acacia</i> sp. Petrudor Rock	P1	South of Ballidu, road verge	15
<i>Acacia torticarpa</i>	P1	North of Cunderdin, road verge	20
<i>Acacia volubilis</i>	DRF	North of Cunderdin, road verge	2
<i>Cryptandra dielsii</i>	P3	North of Cunderdin, road verge	5
<i>Gastrolobium glaucum</i>	DRF	East of Wongan-Ballidu, road verge	12
<i>Grevillea bracteosa</i> subsp. <i>bracteosa</i>	DRF	East of Mogumber, road verge	10
<i>Guichenotia seorisflora</i>	DRF	North of Cunderdin, road verge	2

- All populations have been collected with specimens being identified and processed by Mike Hislop WA Herbarium. Threatened and Priority Report Forms have been completed and will be sent once confirmation has been provided.

## District Flora List Changes

<i>Chamelaucium</i> sp. Wongan Hills (B.H. Smith 1140)	P3	Name Change
<i>Darwinia thymoides</i> subsp. St Ronans (J.J. Alford & G.J. Keighery 64)	P4	Name Change
<i>Dielsiodoxa leucantha</i>	P3	Name Change
<i>Chamelaucium</i> sp. Mukinbudin (M. Squire 007)	P1	Addition
<i>Euryomyrtus</i> sp. Parker Range (N. Gibson & M. Lyons 2269)	P1	Name Change
<i>Euryomyrtus patrickiae</i>	P3	Deletion
<i>Goodenia trichophylla</i>	P3	Deletion
<i>Microtis quadrata</i>	P4	Name Change
<i>Verticordia mitchelliana</i> subsp. <i>michelliana</i>	P3	Addition
<i>Melaleuca ochroma</i>	P3	Addition
<i>Chamelaucium</i> sp. Parker Range (B. H. Smith 1255)	P1	Addition



### 3. Conservation Officers Report (Natasha Moore)

- *Conospermum galeatum* (Priority 1) has been nominated for DRF (critically endangered). The TSSC is meeting April 2011. Only 1 small population is known after extensive surveys by Bert Hort. The known population occurs in the Quairading town reserve. The species is fire dependent and may occur in greater numbers after fire.
- *Chamelaucium* sp. Parker Range has recently been allocated Priority 1 status. It is only known from 1 population in the Parker Range and under threat from mining activity. Currently only 4-5 plants known with a flowering period in November.
- *Philotheca basistyla* – population 1 has been rabbit-proof fenced. Further rabbit control planned for inside the fenced area. All existing plants have been sampled for cryostorage at BGPA. A further couple of plants have been found at the population as the plants have started flowering through recent rain.

### 4. Conservation Officers Report (Jill Symington)

Caring for Country North zone update

- 55 DRF populations (with additional 6 populations of *Hakea aculeata* reallocated)
- 53 DRF populations have been monitored for rabbit activity, threats assessed and potential management actions identified.
- Threatened flora report forms have been completed for approx. 50% of the populations; the remainder is in process of being typed up.
- 1080 rabbit baiting - 4 sites in Feb-Mar 2011. Including 3 private properties and 1 nature reserve (13 DRF populations covered).
- Total area baited 2011 = 420 ha (area baited 2010 = 815ha)
- Fumigating and collapsing of warrens - done at the baited sites in Nov 2010, plus one other private property - 14 DRF populations are in close proximity.
- A recruitment burn at a *Daviesia euphorbioides* population has been planned for late Autumn 2011.
- 1 fencing project protecting a *Caladenia drakeoides* population has commenced. This will include ~400m of fencing and 0.7 ha of habitat.
- 11 DRF populations have been identified as possibly suitable for installing rabbit proof fencing.

*Caladenia drakeoides*

- 14 populations in north zone
- 2010 was a poor year (dry) - only 1 plant found during surveys.
- Rabbit activity: moderate to high at ~ 1/2 the sites; no-low rabbit activity at the remainder of sites.
- Landowners advise - lower rabbit numbers 2010/11 - Myxomatosis or Rabbit haemorrhagic disease (RHD)
- 1080 Baiting: In 2010 – 3 sub-pops (Pithara). In 2011 – 6 sub-pops (Pithara & Ballidu).
- Warren fumigation & collapsing: 6 sub-populations in Nov 2010. Many large active warrens. Resulted in reduced scats & buckheaps.
- Fencing: One population is being fenced - near Lake Moore & last seen 2 years ago by landowner.

Proposed 2011 works:

- Improving stock fence around a Pithara sub-population by adding rabbit netting (site where plant was seen in 2010).
- Future rabbit monitoring within the fenced area of the Lake Moore population being fenced. Bait if required.
- Flora surveys for all populations in Aug-Spring. Further potential management actions may be done if populations are found.

### *Daviesia euphorbioides*

#### Site observations:

- Moderate to high rabbit activity near populations along railway line and in Elphin Nature, Wongan Hills.
- Some plants appeared to be affected by the dry 2010 winter.
- No recent recruitment outside the existing burn plots (2007 & 2009).

#### Management Actions:

- 1080 rabbit baiting & fumigation done in 2010 and 2011 in Elphin Nature Reserve reduced rabbit activity near 4 populations.
- Recruitment burn - Autumn 2011. Burning 4 dead adult plants.
- Rabbit proof fencing to be installed at three populations in the coming months, including the recruitment burn site.
- Possibly weed control at 1 population (weedy area of rail reserve)

### *Darwinia carnea*

#### Threats:

- Rabbit & kangaroo grazing - all sub-pops)
- Low recruitment & natural senescence of older plants
- Lack of disturbance

#### Potential on-ground works:

- Install fencing at one population – currently has many individual plants surrounded by rabbit proof cages.
- Potential recruitment burn site for 2012 - 1 population is declining - many plants (caged and uncaged) are either dead or senescing.

Little recruitment is occurring in the population, there are few seedlings.

- Species is thought likely to be an obligate seeder after fire.

### *Grevillea pythara*

#### Potential on-ground works:

- Fencing upgrades of 2 sub-pops (Shire approval to be obtained)
- Potentially weed control – needs investigating as it is a weedy road verge adjoining paddocks.

### *Stylidium coroniforme* subsp. *coroniforme*

#### Potential on-ground works:

- Fencing of one population in NR
- Further surveys to confirm population extents – winter/early spring

#### Community engagement:

- Volunteer survey for *Stylidium coroniforme* ssp. *coroniforme* – Elphin Nature Reserve, Oct 2010. 5 volunteers were involved, > 100 plants found.
- 4 landowners involved in identifying areas of rabbit activity and/or threatened flora searches
- Newsletter articles - published in the Wongan Hills Ecoscape Newsletter and in WNRM biodiversity e-news.
- Roadside Conservation Committee training with interested Shires is starting in April.
- Wongan Hills Bushcare Group meetings – update group on work being done in Wongan Hills and encourage volunteer involvement.
- Rabbit control calendar wheel (by Natasha) and three posters regarding the project and managing rabbit impact have been produced.
- Dowerin Field Days (Aug 2010) –reducing rabbit impacts in the Wheatbelt as the theme.
- Mukinbudin Granite Outcrop Symposium (Oct 2010) – Project officers attended and increased community awareness of the project

## 5. Species and Communities Update (Andrew Brown & Melanie Smith)

**Interim Recovery Plan (IRPs Critically Endangered Flora.** IRPs for 33 CR spp in place for the Central Wheatbelt District

*Acacia cochlocarpa* subsp. *cochlocarpa*  
*Acacia cochlocarpa* subsp. *velutinosa*  
*Acacia pharangites*  
*Acacia sciophanes*  
*Acacia subflexuosa* subsp. *capillata*  
*Acacia volubilis*  
*Caladenia drakeoides*  
*Cyphanthera odgersii* subsp. *occidentalis*  
*Darwinia carnea*  
*Daviesia cunderdin*  
*Daviesia euphorbioides*  
*Daviesia microcarpa*  
*Eremophila pinnatifida*  
*Gastrolobium diabolophyllum*  
*Gastrolobium glaucum*  
*Gastrolobium hamulosum*  
*Grevillea dryandroides* subsp. *dryandroides*  
*Grevillea pythara*  
*Guichenotia seorsiflora*  
*Gyrostemon reticulatus*  
*Haloragis platycarpa*  
*Hemiandra rutilans*  
*Isopogon robustus*  
*Jacksonia pungens*  
*Lysiosepalum abollatum*  
*Philothea basistyla*  
*Pityrodia axillaris*  
*Pityrodia scabra*  
*Rhizanthella gardneri*  
*Symonanthus bancroftii*  
*Thomasia* sp. Green Hill (S. Paust1-3122) *Tetratheca deltoidea*  
*Verticordia staminosa* subsp. *staminosa*

### **IRPs in draft (1)**

*Acacia vassalii*

### **IRPs Endangered Flora.** IRPs in place (6) for the CWD

*Acacia lobulata*  
*Banksia cuneata*  
*Eremophila resinosa*  
*Eremophila virens*  
*Acacia pygmaea*  
*Frankenia parvula*

### **IRPs Vulnerable Flora.** IRPs in place (4) for the CWD

*Acacia lanuginophylla*  
*Frankenia conferta*  
*Myriophyllum lapidicola*  
*Grevillea dryandroides* subsp. *hirsuta*

## IRPs for CR flora that have exceeded their 5 year implementation period and require review

Note: 3 have been done, 1 part done and 5 are being reviewed by the Commonwealth

IRPs that require review (13)	Start	Finish	Comm review (Mike Young)
<i>Daviesia euphorbioides</i>	2000	2003	Done by DEC 2008
<i>Grevillea dryandroides</i> subsp. <i>dryandroides</i>	2000	2003	Done by DEC 2008
<i>Grevillea pythara</i>	2001	2004	
<i>Tetraloche deltoidea</i>	2001	2004	
<i>Verticordia staminosa</i> subsp. <i>staminosa</i>	2001	2004	
<i>Eremophila pinnatifida</i>	2002	2007	Comm.
<i>Gastrolobium hamulosum</i>	2002	2005	
<i>Acacia subflexuosa</i> subsp. <i>capillata</i>	2003	2008	Comm.
<i>Acacia volubilis</i>	2003	2008	Done by DEC 2008
<i>Caladenia drakeoides</i>	2003	2008	Comm.
<i>Thomasia</i> sp. Green Hill (S. Paust 1-3122)	2003	2008	Comm.
<i>Daviesia microcarpa</i>	2004	2009	Part done (Esperance pops)
<i>Philotheca basistyla</i>	2004	2009	Comm.

## Other IRPs that are being reviewed by the Commonwealth

*Rhizanthella gardneri* (note: plan recently revised and updated) (CR)  
*Acacia ataxiphylla* subsp. *magna* (EN)  
*Conospermum densiflorum* subsp. *unicephalatum* (EN)  
*Eremophila viscida* (EN)  
*Stylidium coroniforme* subsp. *coroniforme* (EN)  
*Verticordia hughanii* (EN)  
*Myriophyllum lapidicola* (VU)

## Changes to the EPBC Act

Taxon	EPBC Act amendment	WA status
<i>Pityrodia axillaris</i>	CR	CR

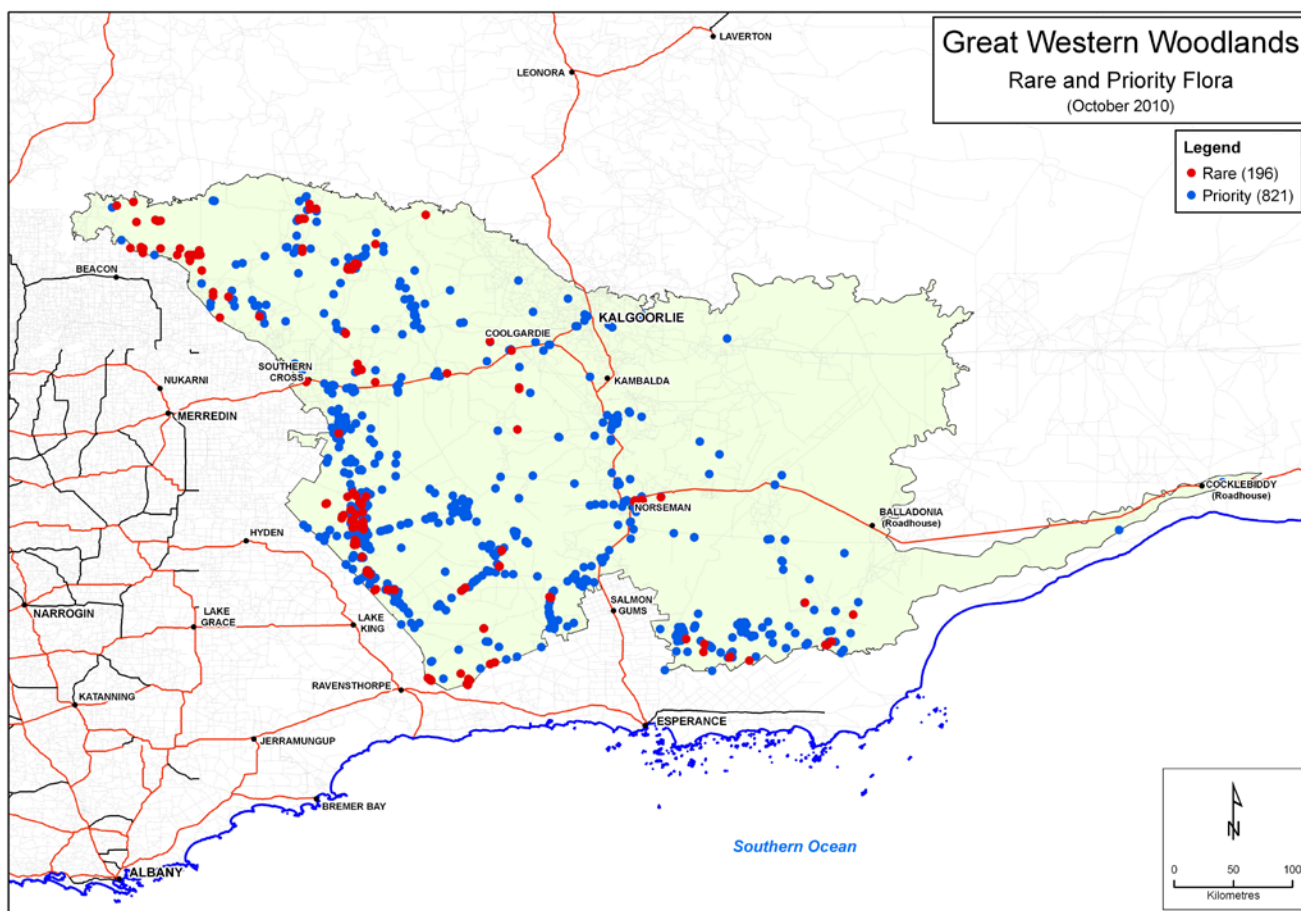
## Recent changes to the Priority flora list. Changes from 16 September 2010 to 28 March 2011

Change	Taxon	Cons. code	Old name
Addition	<i>Chamelaucium</i> sp. Mukinbudin (M. Squire 007)	1	
Addition	<i>Chamelaucium</i> sp. Parker Range (B.H. Smith 1255)	1	
Addition	<i>Verticordia mitchelliana</i> subsp. <i>mitchelliana</i>	3	
Deletion	<i>Euryomyrtus patrickiae</i>	3	
Deletion	<i>Goodenia trichophylla</i>	3	
Name Change	<i>Dielsiodoxa leucantha</i>	3	<i>Monotoca leucantha</i>

- Andrew Brown's new *Eremophila* book will be published in August 2011.

## 6. Great Western Woodlands Project Update (Ian Stewart)

- The Great Western Woodlands contains the largest temperate woodland remaining on Earth.
- The region covers almost 16 million hectares, 160,000 square kilometres, from the southern edge of the Western Australian Wheatbelt to the pastoral lands of the mulga country in the north, the inland deserts to the northeast, and the treeless Nullarbor Plain to the east.
- It is approximately 2.3 times as large as Tasmania.
- The GWW partially overlaps and it otherwise contiguous with the north-eastern edge of the South-West Botanical Province an internationally recognised biodiversity hotspot.
- Supports over 3000 flowering plants
- 20% of Australian's known flora
- 160 of Australia's 350 eucalypt species
- Many endemic to south-western Australia.
- 38 plant species listed as threatened
- 217 listed as priority
- 15 priority ecological communities
- 49 mammal, 138 reptile, 14 frog & 215 bird species
- 7 species listed as threatened
- 10 species listed as priority
- 20 mammal species are 'no longer present'



### Further references:

Watson. A. *et al* (2008) The Extraordinary Nature of the Great Western Woodlands.

A Biodiversity and Cultural Conservation Strategy for the Great Western Woodlands, DEC, 2010.

### ATTACHMENT 3: Declared & Priority Flora list for the Central Wheatbelt District

Current @ 29 December 2010

Critically Endangered (CR)									
No.	Species/Taxon	WA IUCN Rank	EPBC Rank	Distribution	Flowering period	Common Name	Old District	Approved IRP	Taxon ID
1	<i>Acacia cochlocarpa</i> subsp. <i>cochlocarpa</i>	CR	E*	Watheroo	Jun-Jul		Avon-Mortlock	Yes	14062
2	<i>Acacia cochlocarpa</i> subsp. <i>velutinos</i>	CR	CR	Manmanning	Jun-Aug		Avon-Mortlock		14063
3	<i>Acacia pharangites</i>	CR	E*	Wongan Hills	Aug-Sep		Avon-Mortlock	Yes	3487
4	<i>Acacia sciophanes</i>	CR	E*	Mukinbudin, Victoria Rock	Sep-Jan		Yilgarn	Yes	3531
5	<i>Acacia subflexuosa</i> subsp. <i>capillata</i>	CR	E*	S of Cunderdin	Aug-Sep		Avon-Mortlock	Yes	14146
6	<i>Acacia vassalii</i>	CR	E*	Wongan Hills-Watheroo	Jul-Aug		Avon-Mortlock		3594
7	<i>Acacia volubilis</i>	CR	E*	Cunderdin	-		Avon-Mortlock	Yes	3597
8	<i>Caladenia drakeoides</i>	CR	E*	Meckering-Coorow	Aug-Oct		Avon-Mortlock/Yilgarn	Yes	19217
9	<i>Cyphanthera odgersii</i> subsp. <i>occidentalis</i>	CR	E*	Cowcowing	Sep-Dec		Avon-Mortlock	Yes	11751
10	<i>Darwinia carnea</i>	CR	E*	Narrogin, Mogumber	Oct-Dec		Avon-Mortlock	Yes	5507
11	<i>Daviesia cunderdin</i>	CR	E*	Cunderdin	May		Avon-Mortlock	Yes	16988
12	<i>Daviesia euphorbioides</i>	CR	E*	Cadoux-Wongan Hills	Jun,Jul		Avon-Mortlock	Yes	3810
13	<i>Daviesia microcarpa</i>	CR	E*	NE of Norseman, Southern Cross	Aug-Sep		Yilgarn	Yes	12327
14	<i>Eremophila pinnatifida</i>	CR	E*	Dalwallinu	-		Avon-Mortlock	Yes	16039
15	<i>Gastrolobium diabolophyllum</i>	CR	*	Dulyalbin			Yilgarn	Yes	19113
16	<i>Gastrolobium glaucum</i>	CR	E*	Wongan Hills	Aug-sep		Avon-Mortlock	Yes	3902
17	<i>Gastrolobium hamulosum</i>	CR	E*	Wongan Hills, Calingiri			Avon-Mortlock	Yes	3904
18	<i>Grevillea dryandroides</i> subsp. <i>dryandroides</i>	CR	E*	Ballidu	Sep-Oc,Fe-Ma		Avon-Mortlock	Yes	14411
19	<i>Grevillea pythara</i>	CR	E*	Pithara			Avon-Mortlock	Yes	13941
20	<i>Guichenotia seorsiflora</i> ms	CR	*	Youndegin, Corrigin	Jul-Sep		Avon-Mortlock/Yilgarn	Yes	17289
21	<i>Gyrostemon reticulatus</i>	CR	CR	Wubin, Kalannie, Tardun, Perenjori	Oct-Nov		Avon-Mortlock	Yes	2785
22	<i>Haloragis platycarpa</i>	CR	CR	Dalwallinu	Oct		Avon-Mortlock	Yes	6177
23	<i>Hemiandra rutilans</i>	CR	E*	Dowerin, York			Avon-Mortlock		6841
24	<i>Isopogon robustus</i>	CR	*	Parker Range, Marvel Loch	Sep-Oct		Yilgarn	Yes	25898
25	<i>Jacksonia pungens</i> ms	CR	E*	Sth of Marchagee	Oct-Feb		Avon-Mortlock	Yes	14744
26	<i>Lysiosepalum abollatum</i>	CR	*	Wongan Hills	Aug,Sep		Avon-Mortlock	Yes	17740

27	<i>Philotheca basistyla</i>	CR	E*	Trayning	Aug		Yilgarn	Yes	13497
28	<i>Pityrodia axillaris</i>	CR	*	Pithara, Morawa, Lake Moore	Jul-Oct		Avon-Mortlock		6800
29	<i>Pityrodia scabra</i>	CR	E*	Cowcowing	Aug-Nov		Avon-Mortlock	Yes	6819
30	<i>Rhizanthella gardneri</i>	CR	E*	Wubin-Munglinup	May-Jul		Yilgarn	Yes	1699
31	<i>Symonanthus bancroftii</i>	CR	E*	Bruce Rock	Jun(Sep)		Yilgarn	Yes	7044
32	<i>Tetratheca deltoidea</i>	CR	E*	Mt Caroline	Aug-Sep		Yilgarn	Yes	4529
33	<i>Thomasia</i> sp. Green Hill (Paust 1322)	CR	E*	New Norcia	Oct		Avon-Mortlock	Yes	14248
34	<i>Verticordia staminosa</i> subsp. <i>staminosa</i>	CR	E*	Wongan Hills	Jun-Aug		Avon-Mortlock	Yes	15614
<b>TOTAL CR = 34</b>									

<b>Endangered (EN)</b>									
No.	Species/Taxon	WA IUCN Rank	EPBC Rank	Distribution	Flowering period	Common Name	Old District	Approved IRP	Taxon ID
1	<i>Acacia ataxiphylla</i> subsp. <i>magna</i>	E	E	Charles Gardner Reserve, Cunderdin	Jul		Avon-Mortlock	Yes	14687
2	<i>Acacia chapmanii</i> subsp. <i>australis</i>	E	E	Bolgart, Wyening			Avon-Mortlock		14059
3	<i>Acacia lobulata</i>	E	E	Warralakkin	Jun-Jul		Yilgarn	Yes	12263
4	<i>Acacia pygmaea</i>	E	E	Wongan Hills	Mar-May		Avon-Mortlock	Yes	13611
5	<i>Banksia cuneata</i>	E	E	Beverley-Quairading	Jun-Dec		Avon-Mortlock	Yes	1812
6	<i>Conospermum densiflorum</i> subsp. <i>unicephalatum</i>	E	E	Gingin, Gillingarra			Avon-Mortlock	Yes	14000
7	<i>Conostylis wonganensis</i>	E	E	Wongan Hills and Manmanning	Jul-Sep		Avon-Mortlock		1462
8	<i>Darwinia acerosa</i>	E	E	Mogumber, Wannamal, Gillingarra	Sep-Nov		Avon-Mortlock		5504
9	<i>Daviesia dielsii</i>	E	V*	Moora, Watheroo, Marchagee, Dalwallinu	Jul-Aug		Avon-Mortlock		3806
10	<i>Eremophila resinosa</i>	E	E	Yellowdine, Wyalkatchem	Sep-Jan		Avon-Mortlock/Yilgarn	Yes	7262
11	<i>Eremophila virens</i>	E	E	Mukinbudin, Westonia, Coolgardie	Aug-Oct		Yilgarn	Yes	7280
12	<i>Eremophila viscida</i>	E	E	Between Mullewa and Lake Hope, Ballidu	Sep-Oct		Avon-Mortlock/Yilgarn	Yes	7282
13	<i>Eucalyptus brevipes</i>	E	E	NE of Mukinbudin	Jul-Sep		Yilgarn		5567
14	<i>Eucalyptus crucis</i> subsp. <i>crucis</i>	E	V*	Westonia	Dec-Mar		Yilgarn		11294
15	<i>Eucalyptus pruiniramis</i>	E	E	Mogumber-Three Springs	Jan		Avon-Mortlock		13040
16	<i>Frankenia parvula</i>	E	E	Mortlock River	-		Avon-Mortlock/Yilgarn	Yes	5208
17	<i>Glyceria drummondii</i>	E	E	Mingenew, Beverley	Jul-Oct		Avon-Mortlock		436
18	<i>Goodenia arthrotricha</i>	E	*	Wannamal, Moora, Ellis Brook, Bindoon	Nov,Dec		Avon-Mortlock		7491

19	<i>Grevillea bracteosa</i> subsp. <i>bracteosa</i>	E	*	Geraldton, Howatharra,	Aug-Oct		Avon-Mortlock		
20	<i>Grevillea christineae</i>	E	E	Mortlock River, Goomalling, Watheroo, Upper Swan	Sep		Avon-Mortlock		1976
21	<i>Hakea aculeata</i>	E	V*	Cunderdin-Brookton	Sep-Oct		Avon-Mortlock		2125
22	<i>Jacksonia quairading</i> ms	E	E	Quairading	Oct		Avon-Mortlock		14750
23	<i>Melaleuca sciotostyla</i>	E	E	Wongan Hills, Cadoux	Aug		Avon-Mortlock/Yilgarn		5962
24	<i>Philotheca falcata</i>	E	X	Yellowdine	Oct		Yilgarn		18517
25	<i>Philotheca wonganensis</i>	E	E	Wongan Hills, Northampton	Aug-Sep		Avon-Mortlock		18505
26	<i>Ptilotus fasciculatus</i>	E	E	Cunderdin, Gunyidi, Coorow, Kondinin, Marchagee, Koonbabbie, Yenyening Lakes NR, Seagroatt NR	Oct,Nov		Avon-Mortlock/Yilgarn		2722
27	<i>Spirogardnera rubescens</i>	E	E	Bindoon-Eneabba, Alexander Morrison NP	Aug-Nov		Avon-Mortlock		2360
28	<i>Styloidium coroniforme</i> subsp. <i>coroniforme</i>	E	E	Wongan Hills, Latham	Sep		Avon-Mortlock	Yes	23471
29	<i>Verticordia hughanii</i>	E	E	Dowerin-Goomalling	Nov-Feb		Avon-Mortlock	Yes	6089
<b>TOTAL EN = 29</b>									

<b>Vulnerable (VU)</b>									
No.	Species/Taxon	WA IUCN Rank	EPBC Rank	Distribution	Flowering period	Common Name	Old District	Approved IRP	Taxon ID
1	<i>Acacia aphylla</i>	V	V	Perth - Northam	Aug-Sep		Avon-Mortlock		3220
2	<i>Acacia brachypoda</i>	V	E*	Brookton, Beverley, Darkin Swamp	May		Avon-Mortlock		12250
3	<i>Acacia caesariata</i>	V	*	Wyalkatchem, Lake Grace, Corrigin	Jul-Sep		Avon-Mortlock/Yilgarn		12251
4	<i>Acacia denticulosa</i>	V	V	Beacon-Mt Churchman, Neale Junction NR	Aug-Nov		Avon-Mortlock/Yilgarn		3293
5	<i>Acacia lanuginophylla</i>	V	E*	Newdegate-Pingaring	Aug-Oct		Yilgarn	Yes	12261
6	<i>Allocasuarina fibrosa</i>	V	V	Tammin, Beverley	Sep-Nov		Avon-Mortlock		1727
7	<i>Banksia mimica</i>	V	E*	Whicher Range, Kalamunda, Mogumber, Gingin	Dec-Jan		Avon-Mortlock		32211
8	<i>Banksia serratuloides</i> subsp. <i>serratuloides</i>	V	V	Mogumber, Moora, Boothendarra, Gillingarra	Jun-Sep		Avon-Mortlock		32082
9	<i>Banksia sphaerocarpa</i> var. <i>dolichostyla</i>	V	V	Ironcaps, Forrestania, Mt Hampton, Woolocutty	Mar-May		Yilgarn		11582
10	<i>Boronia adamsiana</i>	V	V	Mukinbudin	Jun-Jul		Yilgarn		4402
11	<i>Boronia revoluta</i>	V	E*	Ironcaps, Hatter Hill	Sep-Oct		Yilgarn		4439
12	<i>Calectasia pignattiana</i>	V	V	Quairading, Coorow, Frankland, Toolibin	Aug-Oct		Avon-Mortlock		19310
13	<i>Eleocharis keigheryi</i>	V	V	Kenwick, Lesueur, Cataby, Wannamal, Ellenbrook, Boyanup, Waterloo, Julimar, Lesueur, Bolgart	-		Avon-Mortlock		17605
14	<i>Eremophila ternifolia</i>	V	E*	Wongan Hills region	Oct-Feb		Avon-Mortlock		7275
15	<i>Eremophila vernicosa</i>	V	V	Wubin/Dalwallinu, Coorow	Sep		Avon-Mortlock		14520
16	<i>Eucalyptus recta</i>	V	*	Cadoux, Manmanning			Avon-Mortlock		13016



17	<i>Eucalyptus steedmanii</i>	V	V	E of Hyden	Jan-Mar		Yilgarn		5777
18	<i>Eucalyptus synandra</i>	V	V	Paynes Find-Koorda, Morawa	Feb		Avon-Mortlock/Yilgarn		5783
19	<i>Frankenia conferta</i>	V	X*	Ballidu, (East of York)	-		Avon-Mortlock/Yilgarn	Yes	5192
20	<i>Gastrolobium graniticum</i>	V	E*	Coolgardie, Gnamma Hill, Naremben, Yellowdine, Bullabulling	Aug-Nov		Yilgarn		11034
21	<i>Grevillea dryandroides</i> subsp. <i>hirsuta</i>	V	E*	Cadoux - Corrigin, Dowerin	Sep-Oct, Fe-Ma		Avon-Mortlock/Yilgarn	Yes	14412
22	<i>Lechenaultia laricina</i>	V	E*	SW of Northam, Brookton	Oct-Dec		Avon-Mortlock		7579
23	<i>Microcorys eremophiloides</i>	V	V	Wongan Hills, Konningorring, Ejanding	Jul-Nov		Avon-Mortlock		6890
24	<i>Muelleranthus crenulatus</i>	V	*	Lake Cronin	Jul		Yilgarn		4109
25	<i>Myriophyllum lapidicola</i>	V	E*	NW of Chiddarcooping Hill, Yowie Rock, Juardi, Yanneymoon	Sep		Yilgarn	Yes	13082
26	<i>Rhagodia acicularis</i>	V	V	Wongan Hills	Oct-May		Avon-Mortlock		2577
27	<i>Roycea pycnophylloides</i>	V	E*	Meckering, Cunderdin, Pingrup, Kondinin	Nov		Avon-Mortlock/Yilgarn	Yes	2588
28	<i>Stylidium merrallii</i>	V	V	Near Lake Brown, Mukinbudin, Mouroubra Station	-		Yilgarn		7761
29	<i>Thomasia glabripetala</i>	V	V	E of York	Sep-Oct		Avon-Mortlock		13495
30	<i>Thomasia montana</i>	V	V	Wyalgima Hill	Sep-Oct		Avon-Mortlock		
TOTAL VU = 30									

Presumed Extinct (X)									
No.	Species/Taxon	WA IUCN Rank	EPBC Rank	Distribution	Flowering period	Common Name	Old District	Approved IRP	Taxon ID
1	<i>Thomasia gardneri</i>	X	X	Mt Holland	Sep		Yilgarn		5082
TOTAL X = 1									

**TOTAL DRF (CR+EN+VU+X) = 94**

**TOTAL Priority Flora = P1 (133) + P2 (100) + P3 (204) + P4 (87) = 524**

**TOTAL DRF (94) and Priority Flora (524) = 618**

Priority One Flora in the Central Wheatbelt District

Priority One (P1)						
No.	Species/Taxon	Cons. Code	Distribution	Flowering period	Old District	Taxon ID
1	<i>Acacia desertorum</i> var. <i>nudipes</i>	P1	Ghooli, Southern Cross, Yellowdine		Yilgarn	14069
2	<i>Acacia inceana</i> subsp. <i>latifolia</i>	P1	Kalannie, Jibberding	Aug-Sep	Avon-Mortlock	18106
3	<i>Acacia leptoneura</i>	P1	Dowerin	Aug	Avon-Mortlock	
4	<i>Acacia nigripilosa</i> subsp. <i>latifolia</i>	P1	Maya, Latham, Caron, Bunjil	Aug-Sep	Avon-Mortlock	14685
5	<i>Acacia sclerophylla</i> var. <i>teretiuscula</i>	P1	Bendering, Bruce Rock, Lake Grace, Merredin, Kondinin	Aug-Sep	Yilgarn	11765
6	<i>Acacia</i> sp. Goodlands (BR Maslin 7761) [aff. <i>resinosa</i> ]	P1	Lake Moore	Jul, Aug	Avon-Mortlock	19154
7	<i>Acacia</i> sp. Kalannie North (BR Maslin 7702) [aff. <i>baxteri</i> ]	P1	Kalannie, Goodlands	Jun-Jul	Avon-Mortlock	19152
8	<i>Acacia</i> sp. Kalannie North East (BR Maslin 7519) [aff. <i>rigens</i> ]	P1	Kalannie, Carlyarn	Jul, Aug	Avon-Mortlock	19151
9	<i>Acacia</i> sp. Manmanning (BR Maslin 7711) [aff. <i>multispicata</i> ]	P1	Kalannie, Manmanning	Aug-Sep	Avon-Mortlock	19153
10	<i>Acacia</i> sp. Petrunder Rocks (BR Maslin 7714) [aff. <i>ancistrophylla</i> ]	P1	Petrunder Rocks, Kalannie, Koorda	Jun-Aug	Avon-Mortlock	18611
11	<i>Acacia stanleyi</i>	P1	Mollerin, Lake Moore	Jul-Sep	Avon-Mortlock/Yilgarn	18107
12	<i>Acacia tetraneura</i>	P1	Bruce Rock, Pingaring, Corrigin	Jun-Aug	Yilgarn	14148
13	<i>Acacia torticarpa</i>	P1	Kumminin, Yorkkrakine	Jul	Yilgarn	12270
14	<i>Acacia trinalis</i>	P1	Wongan Hills, Goomalling, Miling, Marchagee	Sep	Avon-Mortlock	14625
15	<i>Acacia websteri</i>	P1	Bencubbin, Coolgardie	-	Yilgarn	3600
16	<i>Andersonia saxatilis</i> ms	P1	Beverley, Armadale, Serpentine Jarrahdale, Mt Vincent, Wandering, North Bannister		Avon-Mortlock	18104
17	<i>Aotus lanea</i>	P1	The Basin, east of Lake King, Salmon Gums	Apr	Yilgarn	31016
18	<i>Aotus</i> sp. Cunderdin (B.J. Lepschi et al. 3587)	P1	Tammin, Cunderdin		Avon-Mortlock	
19	<i>Arthropodium</i> sp. Yenyenning (G.J. Keighery & N. Gibson 2957)	P1	Yenyenning Nature Reserve	Oct	Avon-Mortlock	
20	<i>Austrostipa</i> sp. Mt Holland (W.A. Thompson & J. Allen 948)	P1	Mt Holland		Yilgarn	
21	<i>Baeckea grandibracteata</i> subsp. Parker Range (K. Newbey 9270)	P1	Parker Range	Oct	Yilgarn	31153
22	<i>Baeckea</i> sp. Baladjie (PJ Spencer 24)	P1	Westonia, Bullfinch	Jun	Yilgarn	20625
23	<i>Baeckea</i> sp. Beringbooding (AR Main 11/9/1957)	P1	Beringbooding, Cunderdin Hill, Mukinbudin, Barbalin	Aug	Avon-Mortlock/Yilgarn	20626
24	<i>Baeckea</i> sp. Blue Haze Mine (P. Armstrong 06/910)	P1	Forrestania		Yilgarn	31155
25	<i>Baeckea</i> sp. Bullfinch (K.R. Newbey 5838)	P1	Bullfinch, Southern Cross, Mt Hampton	Sept	Yilgarn	20806
26	<i>Baeckea</i> sp. Crossroads (B.L. Rye & M.E. Trudgen 241186)	P1	Forrestania	Nov	Yilgarn	31154
27	<i>Baeckea</i> sp. Eujinyn (J Buegge D99)	P1	Bruce Rock, Eujinyn	Nov	Yilgarn	28315
28	<i>Baeckea</i> sp. Forrestania (KR Newbey 1105)	P1	Forrestania, Hyden		Yilgarn	20632

29	<i>Baeckea</i> sp. Kellerberrin (CA Gardner sn PERTH 03351009)	P1	Kellerberrin		Yilgarn	28320
30	<i>Baeckea</i> sp. Koorda (WE Blackall 3371)	P1	Wongan Hills, Bencubbin, Koorda, Kalannie	Oct	Avon-Mortlock/Yilgarn	20622
31	<i>Baeckea</i> sp. Lake Cronin (KR Newbey 9191)	P1	Lake Cronin	Oct	Yilgarn	20628
32	<i>Baeckea</i> sp. Muntadgin (ET Bailey 231)	P1	Muntadgin		Yilgarn	20623
33	<i>Baeckea</i> sp. Sheoaks Rocks (ME Trudgen MET5452)	P1	Sheoaks Rocks		Yilgarn	20631
34	<i>Baeckea</i> sp. Stockton Road (ME Trudgen MET22077 & B Rye)	P1	Mukinbudin	Oct	Yilgarn	20627
35	<i>Baeckea</i> sp. Tampia Hill (J.C. Anway 327)	P1	Kellerberrin, Quarading, Naremben, Bruce Rock	Aug-Sep	Avon-Mortlock/Yilgarn	
36	<i>Baeckea</i> sp. Upper Swan (Miss M Eaton s.n. 1888)	P1	? Northam		Avon-Mortlock	20859
37	<i>Baeckea</i> sp. Wialki (GM Storr 4/10/1958)	P1	Wialki, Bonnie Rock, Diemals	Oct-Nov	Yilgarn	20624
38	<i>Baeckea</i> sp. Yacke Yackine Dam (KR Newbey 9195)	P1	Yacke Yackine Dam, Bullfinch	Oct	Yilgarn	20621
39	<i>Baeckea</i> sp. Youndeggin Hill (AS George 15772)	P1	Cunderdin, Tammin, Gnowangerup, Mt Cole, Wandoo NP	Nov	Avon-Mortlock	28317
40	<i>Beyeria</i> apiculata	P1	Wongan Hills	Sep	Avon-Mortlock	
41	<i>Beyeria</i> constellata	P1	Cadoux, Manmanning	Sep	Avon-Mortlock	
42	<i>Beyeria</i> disciformis	P1	Wubin, Buntine		Avon-Mortlock	
43	<i>Brachyloma</i> nguba	P1	Forrestania, Dragon Rocks, NW of Munglinup	Apr-May	Yilgarn	17667
44	<i>Brachyloma</i> sp. Forrestania White (M Hislop & F Hort MH2591)	P1	Forrestania	May	Yilgarn	20327
45	<i>Caesia</i> sp. Ennuin (N. Gibson & M.N. Lyons 2737)	P1	Ennuin		Yilgarn	29186
46	<i>Caladenia</i> cristata	P1	Miling-Dalwallinu	Sep-Oct	Avon-Mortlock	1583
47	<i>Caladenia</i> ornata x	P1	Pithara	Sep	Avon-Mortlock	19277
48	<i>Calandrinia</i> sp. Piawaning (A.C.Beauglehole 12257)	P1	Piawaning, Arthur River	Oct	Avon-Mortlock	20096
49	<i>Calothamnus</i> superbus	P1	Pigeon Rocks		Yilgarn	13232
50	<i>Calytrix</i> acutifolia subsp. brevifolia	P1	Calingari	Aug-Sep	Avon-Mortlock	
51	<i>Chamelaucium</i> sp. Parker Range (B. H. Smith 1255)	P1	Parker Range	Oct-Dec	Yilgarn	
52	<i>Chorizema</i> circinale	P1	Grasspatch, Ninety Mile Tank, NW Esperance	Sep	Yilgarn	13110
53	<i>Commersonia</i> sp. Bindoon (C. Wilkins & F. & J. Hort CW 2155)	P1	Wongan Hills	Feb/Oct	Avon-Mortlock	
54	<i>Conospermum</i> galeatum	P1	Kellerberrin, Yilgarn		Avon-Mortlock/Yilgarn	14002
55	<i>Conostylis</i> caricina subsp. elachys	P1	Gunyidi, Goomalling, Dowerin, Bindoon	Aug, Sep	Avon-Mortlock	11807
56	<i>Cryptandra</i> polyclada subsp. aequabilis	P1	E of Yellowdine		Yilgarn	
57	<i>Dampiera</i> glabrescens	P1	Ballidu	May	Avon-Mortlock	7441
58	<i>Dampiera</i> scaevolina	P1	Bencubbin, Holt Rock, Beacon	Oct-Nov	Yilgarn	7473
59	<i>Dampiera</i> triloba	P1	Cunderdin	Aug-Dec	Avon-Mortlock	
60	<i>Darwinia</i> sp. Wyalgima Hill (L.W.Sage et al LWS 1549)	P1	Beverley	Sep	Avon-Mortlock	19318
61	<i>Dicrastylis</i> capitellata	P1	Mt Heywood, Hyden, Clyde Hill	Nov-Dec	Yilgarn	12860

62	<i>Dillwynia</i> sp. Capel (P.A. Jurjevich 1771)	P1	Forrestania	Sep-Oct	Yilgarn	
63	<i>Drummondita wilsonii</i>	P1	Parker Range	Jun-Jul	Yilgarn	13498
64	<i>Eremophila adenotricha</i>	P1	Holleton, (North of Hyden - Glenelg Hills)	Sep-Nov	Yilgarn	7179
65	<i>Eremophila glabra</i> subsp. <i>Kokeby</i> (R. Davis 5080)	P1	Mt Kokeby		Avon-Mortlock	
66	<i>Eremophila glabra</i> subsp. <i>York</i> (P.G. Wilson 12172 B)	P1	York	Aug	Avon-Mortlock	
67	<i>Eremophila</i> sp. <i>Beverley</i> (K. Kershaw KK 2438)	P1	Mt Kokeby		Avon-Mortlock	
68	<i>Eucalyptus myriadena</i> subsp. <i>parviflora</i>	P1	Hyden, Mt Holland		Yilgarn	13514
69	<i>Eucalyptus</i> sp. <i>Mukinbudin</i> (D. Nicole & M. French DN 3486)	P1	Mukinbudin		Yilgarn	
70	<i>Euryomyrtus</i> sp. <i>Parker Range</i> (N. Gibson & M. Lyons 2269)	P1	Parker Range	Oct	Yilgarn	16844
71	<i>Frankenia bracteata</i>	P1	Mullewa, Cunderdin	Oct	Avon-Mortlock	5190
72	<i>Gastrolobium tenue</i>	P1	Belka, Shackleton, Naremben, South Doodlakine, Bruce Rock		Yilgarn	16413
73	<i>Glossostigma trichodes</i>	P1	Chiddarcooping, Warrachupin Rock	Sep	Yilgarn	
74	<i>Gnephosis intonsa</i>	P1	Gibraltar, Boorabbin, Dundas	Sep	Yilgarn	7996
75	<i>Gnephosis setifera</i>	P1	Bunjil, Morawa	-	Avon-Mortlock	12626
76	<i>Gnephosis</i> sp. <i>Norseman</i> (KR Newbey 8096)	P1	Jaurdi Stn, Norseman	Sep,Oct	Yilgarn	17721
77	<i>Goodenia heatheriana</i>	P1	Parker Range, Marvel Loch	Sep,Oct	Yilgarn	19349
78	<i>Grevillea lissopleura</i>	P1	North of Mt Holland	Aug,Sep	Yilgarn	2033
79	<i>Grevillea lullfitzii</i>	P1	Digger Rock, South Ironcap	Dec	Yilgarn	2034
80	<i>Grevillea marriottii</i>	P1	Mt Holland	Sep,Oct	Yilgarn	12223
81	<i>Grevillea minutiflora</i>	P1	Bencubbin, Mukinbudin	Sep	Avon-Mortlock/Yilgarn	2041
82	<i>Grevillea phillipsiana</i>	P1	Norseman, Yardina, Kambalda, Widgiemooltha	Aug-Sep	Yilgarn	2064
83	<i>Grevillea pinifolia</i>	P1	Coorow, Miling, Wubin, Bindi Bindi	Jul-Sep	Avon-Mortlock	2067
84	<i>Grevillea</i> sp. <i>Trayning</i> (W. Johnston WJ 071)	P1	Trayning	Dec	Yilgarn	31212
85	<i>Grevillea squiresiae</i>	P1	Mukinbudin, Coorancooping	Dec	Yilgarn	20260
86	<i>Guichenotia glandulosa</i>	P1	Uberin Rock		Avon-Mortlock	19503
87	<i>Hakea chromatropa</i>	P1	Bolgart, Carani	Jul-Oct	Avon-Mortlock	31777
88	<i>Hemigenia dulca</i>	P1	Bullfinch, Chutawalakin Hill	Apr,Oct	Yilgarn	
89	<i>Hibbertia axillibarba</i>	P1	South Ironcap	Sep,Oct	Yilgarn	19430
90	<i>Hydrocotyle corynophora</i>	P1	Eastern source of Swan River		Avon-Mortlock	6228
91	<i>Hypocalymma puniceum</i> subsp. <i>Cadoux</i> (H Demarz 10533)	P1	Cadoux		Avon-Mortlock	31411
92	<i>Jacksonia debilis</i>	P1	Newdegate, Pantapin, Kukerin	Sep-Oct	Yilgarn	14749
93	<i>Lechenaultia magnifica</i>	P1	Bindoon, Julimar SF	Nov	Avon-Mortlock	20527
94	<i>Lepidosperma amantiferrum</i>	P1	Forrestania		Yilgarn	31772
95	<i>Lepidosperma diurnum</i>	P1	Mt Holland	July	Yilgarn	
96	<i>Lepidosperma ferriculmen</i>	P1	Forrestania	July	Yilgarn	31755

97	<i>Lepidosperma</i> sp. Mt Caudan (N. Gibson & M. Lyons 2081)	P1	Parker Range		Yilgarn	
98	<i>Lepidosperma</i> sp. Parker Range (N. Gibson & M. Lyons 2094)	P1	Mount Caudin		Yilgarn	
99	<i>Leucopogon validus</i>	P1	Parker Range	Jun-Sep	Yilgarn	31798
100	<i>Melaleuca grieviana</i>	P1	Cowcowing, Narembeen, Parker Range, Wyalkatchem		Avon-Mortlock/Yilgarn	19450
101	<i>Melaleuca manglesii</i>	P1	Meckering, Kellerberrin, Cowcowing, Tammin		Avon-Mortlock/Yilgarn	19521
102	<i>Micromyrtus redita</i>	P1	Wongan Hills, Wialki	Sep	Avon-Mortlock/Yilgarn	29557
103	<i>Millotia newbeyi</i>	P1	Marvel Loch	Sep	Yilgarn	14338
104	<i>Mirbelia taxifolia</i>	P1	Karalee	Sep	Yilgarn	4103
105	<i>Persoonia leucopogon</i>	P1	Between Coolgardie & Laverton, Comet Vale (Menzies)	-	Yilgarn	2266
106	<i>Philothea langei</i>	P1	Chiddarcooping		Yilgarn	13496
107	<i>Philothea nutans</i>	P1	Ninghan	Aug	Avon-Mortlock/Yilgarn	18511
108	<i>Philothea</i> sp. Mukinbudin (M. Hancock s.n. 08/09/1999)	P1	Barbalin		Yilgarn	
109	<i>Pseudactinia</i> sp. Bruce Rock (J Buegge D36)	P1	Bruce Rock		Yilgarn	19591
110	<i>Ptilotus stirlingii</i> var. <i>pumilus</i>	P1	Shark Bay, Tamala Stn		Avon-Mortlock	11717
111	<i>Scaevola tortuosa</i>	P1	Kellerberrin, Wyola, Cunderdin, Hines Hill	Nov	Avon-Mortlock/Yilgarn	7649
112	<i>Schoenus pennisetis</i>	P1	Cannington, Byford, Kenwick, Wongan Hills	Aug-Dec	Avon-Mortlock	1008
113	<i>Scholtzia eatoniana</i>	P1	Cunderdin	Nov-Dec	Avon-Mortlock	6032
114	<i>Senecio gilbertii</i>	P1	Bindoon, York, Wooroloo	Sep-Nov	Avon-Mortlock	8205
115	<i>Stenanthemum liberum</i>	P1	South Ironcap, Digger Rocks	Aug-Sep	Yilgarn	19706
116	<i>Stenanthemum yorkense</i>	P1	York		Avon-Mortlock	31711
117	<i>Stylidium coroniforme</i> subsp. <i>amblyphyllum</i>	P1	Quairading		Avon-Mortlock	23472
118	<i>Stylidium validum</i>	P1	Forrestania, Bremer Range, Lake Johnson	Sep,Oct	Yilgarn	20773
119	<i>Synaphea panhesya</i>	P1	Bindoon, Mogumber	Aug-Sep	Avon-Mortlock	16768
120	<i>Tecticornia flabelliformis</i>	P1	Lake Yindarigooda, Lake Deborah, Widgiemooltha, Eastern States		Yilgarn	31834
121	<i>Tecticornia</i> sp. Lake Wallambin (K.A. Shepherd KS 1157)	P1	Lake Wallambin		Yilgarn	
122	<i>Tetrateca plumosa</i>	P1	New Norcia	Aug-Oct	Avon-Mortlock	
123	<i>Teucrium</i> sp. Dwarf (R. Davis 8813)	P1	Mt Gordon, Norseman	April	Yilgarn	19393
124	<i>Thomasia</i> sp. New Norcia (Cayser s.n. Nov 1918)	P1	New Norcia		Avon-Mortlock	14249
125	<i>Thryptomene salina</i>	P1	Emu Rock	Oct	Yilgarn	19694
126	<i>Thryptomene</i> sp. Mt Clara (R.J. Cranfield 11702)	P1	Mt Clara	Dec	Yilgarn	31276
127	<i>Trymalium densiflorum</i>	P1	Trayning	Aug	Yilgarn	14794
128	<i>Urodon</i> sp. Narkal (BH Smith 1440)	P1	Narkal, Koorda	Nov	Avon-Mortlock	19563
129	<i>Verticordia roei</i> subsp. <i>meiogona</i>	P1	Beacon, Mukinbudin, Dalwallinu, Wialki	Oct	Avon-	12455

					Mortlock/Yilgarn	
130	<i>Vittadinia cervicularis</i> var. <i>oldfieldii</i>	P1	Merredin, Laverton		Yilgarn	11885
131	<i>Westringia acifolia</i>	P1	Bodallin	Dec	Yilgarn	
132	<i>Xanthoparmelia sargentii</i>	P1	Yilliminning Rock, Kalannie, Holt Rock		Avon-Mortlock	29964
133	<i>Xanthoparmelia subimitatrix</i>	P1	Kamballup		Avon-Mortlock/Yilgarn	29018
<b>TOTAL P1 = 133</b>						

**Priority Two Flora in the Central Wheatbelt District**

<b>Priority Two (P2)</b>						
<b>No.</b>	<b>Species/Taxon</b>	<b>Cons. Code</b>	<b>Distribution</b>	<b>Flowering period</b>	<b>Old District</b>	<b>Taxon ID</b>
1	<i>Acacia arcuatis</i>	P2	Camel Peaks, Kulin, Jitarning, Bending, Pallarup River	Jul-Sep	Avon-Mortlock/Yilgarn	14050
2	<i>Acacia ascendens</i>	P2	Chiddarcooping Hill	Jul-Oct	Yilgarn	12248
3	<i>Acacia asepala</i>	P2	Frank Hann NP, Marvel Loch, Lake Cronin, Forrestiana	Sep	Yilgarn	14052
4	<i>Acacia browniana</i> var. <i>glaucescens</i>	P2	Bindoon, Julimar, Mogumber		Avon-Mortlock	11655
5	<i>Acacia concolorans</i>	P2	Marvel Loch, Parker Range, Karlgarin	Jul-Sep	Yilgarn	14618
6	<i>Acacia congesta</i> subsp. <i>wonganensis</i>	P2	Wongan Hills, Elphin	Aug-Sep	Avon-Mortlock	14065
7	<i>Acacia cowaniana</i>	P2	Mt Caroline, Mooranoppin Rock, Jilakin Rock, (Kellerberrin)	Apr-Sep	Yilgarn	12254
8	<i>Acacia drewiana</i> subsp. <i>minor</i>	P2	Wongan Hills, Newdegate-Lake King, Nyabing		Avon-Mortlock	11829
9	<i>Acacia dura</i>	P2	Piawaning, Wongan Hills, Elphin, Yerecoin	Aug-Oct	Avon-Mortlock	3314
10	<i>Acacia heterochroa</i> subsp. <i>robertii</i>	P2	Bottle Rock, Varley, Digger Rock, South Ironcap		Yilgarn	12760
11	<i>Acacia kerryana</i>	P2	Norseman, Jimberlana Hill, Bremer Range, Lake Cronin, Spargoville	Dec-Feb	Yilgarn	3400
12	<i>Acacia lirellata</i> subsp. <i>compressa</i>	P2	Ballidu, Bruce Rock, Holleton, Muntadgin		Avon-Mortlock/Yilgarn	16977
13	<i>Acacia sclerophylla</i> var. <i>pilosa</i>	P2	Dumblebung, Doodlakine, Tammin	Aug-Oct	Avon-Mortlock/Yilgarn	14160
14	<i>Acacia subrigida</i>	P2	Mukinbudin, Walyahmoning Rock, Ida Valley Stn, Nanga Stn, Tamala Station	Sep,Oct	Avon-Mortlock/Yilgarn	14686
15	<i>Acacia synoria</i>	P2	Lake Moore, Kalannie, Carlyarn Rock, Moorine Rock	Oct-Dec	Avon-Mortlock	18075
16	<i>Acacia tuberculata</i>	P2	Mt Vernon, Camel Peaks, Hyden		Yilgarn	14151
17	<i>Acacia vittata</i>	P2	Lake Logue, Arrowsmith, Mount Kokeby		Avon-Mortlock	14153
18	<i>Aluta aspera</i> subsp. <i>localis</i>	P2	Gabbin, Korrelocking, Mukinbudin	-	Avon-Mortlock/Yilgarn	19464
19	<i>Amperea micrantha</i>	P2	Mokine, Yoongarillup, Busselton, Capel, Whicher Range, Ruabon NR	Sep-Oct	Avon-Mortlock	4586
20	<i>Andersonia carinata</i>	P2	Wagin, Pingelly, Dongolocking, Corrigin		Avon-Mortlock	6307
21	<i>Baeckea</i> sp. <i>Calingiri</i> (F Hort 1710)	P2	Calingiri		Avon-Mortlock	19962
22	<i>Baeckea</i> sp. <i>Narembeen</i> (GJ Keighery & N Gibson 3010)	P2	Narembeen	Sep	Yilgarn	20857
23	<i>Baeckea</i> sp. <i>North Ironcap</i> (RJ Cranfield 10580)	P2	North Ironcap, Boodarding Rock	Oct,Nov	Yilgarn	20630

24	<i>Banksia dallanneyi</i> subsp. <i>agricola</i>	P2	Jubuck, Traysurin, Brookton, Corrigin, Pingelly	Sep	Avon-Mortlock/Yilgarn	32579
25	<i>Banksia rufa</i> subsp. <i>tutanningensis</i>	P2	Tuatanning NR, Mawson	Sep-Oct	Avon-Mortlock	
26	<i>Banksia splendida</i> subsp. <i>splendida</i>	P2	Tammin, Bruce Rock	Jul-Aug	Avon-Mortlock/Yilgarn	32072
27	<i>Bentleya diminuta</i>	P2	Mt Ragged, Cape Arid N.P.	Sep	Yilgarn	12245
28	<i>Boronia ericifolia</i>	P2	Moora, Wongan Hills, Wongamine N.R.	Aug-Oct	Avon-Mortlock	4418
29	<i>Boronia westringioides</i>	P2	Forrestania, Lake Cronin	Jul-Sep	Yilgarn	16328
30	<i>Brachysola halganiacea</i>	P2	Karroun Hill, Mt Jackson	Oct	Yilgarn	19436
31	<i>Calandrinia kalanniensis</i>	P2	Kalannie, Petrudor Rock, Xantippe Rock, Karara Station, Bonnie Rock, Yanneymooning NR, Hughden Rock	Dec-Jan	Avon-Mortlock/Yilgarn	29694
32	<i>Calytrix oncophylla</i>	P2	Wongamine N.R.	Sep-Oct	Avon-Mortlock	12372
33	<i>Calytrix parvivalis</i>	P2	Minnivale	Oct	Avon-Mortlock	5469
34	<i>Calytrix</i> sp. <i>Jingaring</i> (Obbens, Davis & Sage LWS 1332)	P2	Pingelly, Naremben	Oct-Nov	Avon-Mortlock/Yilgarn	18637
35	<i>Chamelaucium croxfordiae</i> ms	P2	Dryandra, Boyagin Rock	Oct	Avon-Mortlock	14354
36	<i>Comesperma griffinii</i>	P2	Eneabba, Indarra		Avon-Mortlock	14663
37	<i>Conospermum sigmoideum</i>	P2	Frank Hann NP, Forrestania		Yilgarn	16846
38	<i>Conostylis albescens</i>	P2	Booraan	Aug	Yilgarn	1419
39	<i>Cyanicula ixioides</i> subsp. <i>candida</i>	P2	Bindoon, Smiths Mill, York, Wooroloo	Aug-Oct	Avon-Mortlock	13827
40	<i>Darwinia</i> sp. <i>Westdale</i> (F Hort 864)	P2	Beverley		Avon-Mortlock	19287
41	<i>Daviesia newbeyi</i>	P2	near Barker Lake, Fitzgerald River NP, Ravensthorpe, Near Mt Buraminya		Yilgarn	12816
42	<i>Daviesia sarissa</i> subsp. <i>redacta</i>	P2	E of Yellowdine		Yilgarn	
43	<i>Daviesia smithiorum</i>	P2	Nammelkatchem, Dowerin	Jun-Jul	Avon-Mortlock	
44	<i>Drummondita</i> sp. <i>Trayning</i> (AM George 97)	P2	Billyacatting Hill, Kununoppin	Jun	Yilgarn	30280
45	<i>Eremophila brevifolia</i>	P2	Geraldton, Mt Caroline, Northampton	Aug-Sep	Yilgarn	7185
46	<i>Eremophila complanata</i>	P2	Chiddarcooping Hill, Wilgoyne Hill	Sep-Oct	Yilgarn	14852
47	<i>Eremophila sargentii</i>	P2	Wongan Hills	-	Avon-Mortlock	7265
48	<i>Eucalyptus educta</i>	P2	Dromedaries Hill	-	Yilgarn	13097
49	<i>Eutaxia lasiocalyx</i>	P2	Jilbadji, Mt Holland, Forrestania, Lake Barker, Parker Range	Sep-Nov	Yilgarn	20741
50	<i>Fitzwillia axilliflora</i>	P2	Lake Magenta, Lake Bryde, Cowcowing, Moora, Lake Cairlocup, (Newdegate)	Oct	Avon-Mortlock	12623
51	<i>Gastrolobium wonganense</i>	P2	Wongan Hills	Sep, Oct	Avon-Mortlock	19729
52	<i>Goodenia granitica</i>	P2	Mukinbudin, Westonia	Nov-Feb	Yilgarn	23462
53	<i>Grevillea endlicheriana</i> subsp. <i>Wongan Hills</i> (G. Keppel 1556)	P2	Wongan Hills	Jul	Avon-Mortlock	28307
54	<i>Grevillea kenneallyi</i>	P2	Wongan Hills, Elphin	Aug	Avon-Mortlock	2027
55	<i>Grevillea nana</i> subsp. <i>abbreviata</i>	P2	Wubin, Dowerin, Mukinbudin, Xantippe Reserve	May-Oct	Avon-Mortlock/Yilgarn	13420
56	<i>Grevillea rosieri</i>	P2	Mollerin, Bunketch, Xantippe Reserve, Doodarding	Jul	Avon-Mortlock	2084



57	<i>Guichenotia asteriskos</i> ms	P2	Newdegate, Dunn Rock, Lake King	Oct	Yilgarn	17714
58	<i>Hakea pendens</i>	P2	Parker Range, East Forrestania	Sep	Yilgarn	12232
59	<i>Hakea rigida</i>	P2	Campion, Bullfinch, Wallaroo Rock, Mt Burges	Sep	Yilgarn	16047
60	<i>Hibbertia chartacea</i>	P2	Bodallin, Carrabin, Bruce Rock	Sep	Yilgarn	20035
61	<i>Hyalosperma stoveae</i>	P2	Perrinvale Station, Burnabinmah	-	Avon-Mortlock	12736
62	<i>Jacksonia rubra</i>	P2	Tammin, Moora - Badgingarra	Oct	Avon-Mortlock/Yilgarn	14751
63	<i>Lasiopetalum</i> sp. Northam (F Hort 1196)	P2	Northam, Clackline	Oct,Nov	Avon-Mortlock	19915
64	<i>Lechenaultia hortii</i>	P2	York	Nov-Jan	Avon-Mortlock	20524
65	<i>Lepidium merrallii</i>	P2	Marvel Loch, Mt Jackson, Koolyanobbing, Burnabinmah	Aug-Sep	Yilgarn	3031
66	<i>Lepidosperma</i> sp. Billyacatting (S.D. Hopper 8630)	P2	Billyacatting N.R.		Yilgarn	
67	<i>Leucopogon amplexens</i>	P2	Tammin, North of Kellerberrin	Apr-Sep	Avon-Mortlock/Yilgarn	6356
68	<i>Leucopogon cymbiformis</i>	P2	Mt Manypeaks, Porongurup NP, Cheynes Beach	-	Avon-Mortlock	6384
69	<i>Leucopogon</i> sp. Flynn (F Hort, J Hort & A Lowrie 859)	P2	Wandoo CP, York	Dec-Feb	Avon-Mortlock	19424
70	<i>Lilaeopsis polyantha</i>	P2	Elyaring Brook	Nov	Avon-Mortlock	
71	<i>Lissanthe scabra</i>	P2	Jaurdi Stn, Marvel Loch, Southern Cross, Frog Rock Nature Reserve	Aug, Sep	Yilgarn	20645
72	<i>Logania exilis</i>	P2	South Ironcap, Mt Holland, Hatter Hill, Boodarding Rock, Digger Rocks	Sep-Oct	Yilgarn	12970
73	<i>Melaleuca oldfieldii</i>	P2	Kalbarri	Nov	Avon-Mortlock	5945
74	<i>Microcorys lenticularis</i>	P2	Tarin Rock, Ongerup, Beaufort Inlet, Quairading	Nov-Jan	Avon-Mortlock/Yilgarn	6894
75	<i>Millotia pilosa</i>	P2	Mt Stirling, Mt Caroline	Sep	Avon-Mortlock	14343
76	<i>Millotia tenuifolia</i> var. <i>laevis</i>	P2	Hagboom Lake	Sep-Oct	Avon-Mortlock	
77	<i>Olearia laciniifolia</i>	P2	Lake Grace, Mt Beaumont	Aug, Sep	Yilgarn	12637
78	<i>Opercularia rubioides</i>	P2	Jerramungup, Lake Cairlocup, North of Stokes Inlet, Harrismith, Quairading	-	Avon-Mortlock	7350
79	<i>Papistylus grandiflorus</i>	P2	Watheroo, Coorow, Wongan Hills	Aug-Sep	Avon-Mortlock	31577
80	<i>Petrophile clavata</i>	P2	Calingiri, Coorow, Alexander Morrison NP	May-Aug	Avon-Mortlock	19763
81	<i>Petrophile trifurcata</i>	P2	Wongan Hills, Pithara	Sep	Avon-Mortlock	
82	<i>Phlegmatospermum eremaeum</i>	P2	Coolgardie, Norseman, Cocklebiddy, Forrest	Aug-Oct	Yilgarn	3059
83	<i>Podotheca pritzelii</i>	P2	Wongan Hills, Kwolyin, Lake Anneen, Nannine	Oct	Avon-Mortlock	12733
84	<i>Pultenaea indira</i> subsp. <i>pudoides</i>	P2	Arthur River, Yilliminning, Corrigin		Yilgarn	20787
85	<i>Scholtzia</i> sp. Gunyidi (JD Briggs 1721)	P2	Dalwallinu, Gunyidi, Watheroo	Sep-Nov	Avon-Mortlock	14675
86	<i>Stylidium chiddarcoopingense</i>	P2	Chiddarcooping NR	Sep, Oct	Yilgarn	19207
87	<i>Stylidium pseudosacculatum</i>	P2	Charles Gardner Reserve, Tammin	Nov	Avon-Mortlock	18418

88	<i>Stylidium</i> sp. Moora (J.A. Wege 713)	P2	Gillingarra	Oct	Avon-Mortlock	
89	<i>Synaphea boyaginensis</i>	P2	Boyagin NR, Lake Bryde NR	Sep-Oct	Avon-Mortlock	17292
90	<i>Synaphea rangiferops</i>	P2	Calingiri, Mogumber, Gillingarra	Aug-Sep	Avon-Mortlock	16773
91	<i>Synaphea sparsiflora</i>	P2	Eneabba, Gillingarra	Aug-Sep	Avon-Mortlock	16764
92	<i>Synaphea tamminensis</i>	P2	Tammin	Aug-Sep	Avon-Mortlock	16771
93	<i>Torrendia grandis</i>	P2	Kellerberrin		Yilgarn	30803
94	<i>Torrendia inculta</i>	P2	Kellerberrin, Corrigin		Yilgarn	30804
95	<i>Trichocline</i> sp. Treeton (BJ Keighery & N Gibson 564)	P2	Treeton, Meelon, Beaufort River	-	Avon-Mortlock	17406
96	<i>Tricoryne</i> sp. Wongan Hills (BH Smith 794)	P2	Yandanooka Hill, Wongan Hills, Depot Hill, Mingenew	Oct,Nov	Avon-Mortlock	29458
97	<i>Verticordia dasystylis</i> subsp. <i>dasystylis</i>	P2	Yellowdine, Duladgin	Nov	Yilgarn	14711
98	<i>Verticordia multiflora</i> subsp. <i>solox</i>	P2	Cockatoo Tank, Mt Holland Road, Lookout Hill, Norpa	Oct	Yilgarn	12445
99	<i>Verticordia pulchella</i>	P2		Sep-Oct	Yilgarn	12454
100	<i>Verticordia wonganensis</i>	P2	Wongan Hills	Nov	Avon-Mortlock	12471
<b>TOTAL P2 = 100</b>						

**Priority Three Flora in the Central Wheatbelt District**

<b>Priority Three (P3)</b>						
<b>No.</b>	<b>Species/Taxon</b>	<b>Cons. Code</b>	<b>Distribution</b>	<b>Flowering period</b>	<b>Old District</b>	<b>Taxon ID</b>
1	<i>Acacia anarthros</i>	P3	East of Wannamal, Hay Flat NR, Calingiri, Yerecoin, Lake Mears, Pingelly	May-Jun	Avon-Mortlock	3210
2	<i>Acacia ancistrophylla</i> var. <i>perarcuata</i>	P3	Bruce Rock, Carrabin, Mukinbudin, Korbel, Dundas, Mt Andrew		Avon-Mortlock/Yilgarn	14048
3	<i>Acacia campylophylla</i>	P3	York, Northam, Tammin, Wyalkatchem, Dowerin, Quairading, Pantapin, Meckering	Jun-Sep	Avon-Mortlock/Yilgarn	3252
4	<i>Acacia crenulata</i>	P3	Southern Cross, Carrabin, Bullabulling, Walyahmoning Rock, Chiddarcooping	Sep-Oct	Yilgarn	14623
5	<i>Acacia cummingiana</i>	P3	Moora, Barberton, Badgingarra, Wannamal, Dandaragan, Watheroo N.P., Boonanarring		Avon-Mortlock	14066
6	<i>Acacia cylindrica</i>	P3	Southern Cross, Mt Correll, Kulja, Hunt Range		Avon-Mortlock/Yilgarn	14068
7	<i>Acacia deflexa</i>	P3	Toolibin, Bendering, Wickepin, Wongan Hills, Corrigin	Aug	Avon-Mortlock/Yilgarn	3287
8	<i>Acacia dissona</i> var. <i>indoloria</i>	P3	Kulja, Bruce Rock, Muntadgin, Frank Hann N.P., Ballidu	Aug-Sep	Avon-Mortlock/Yilgarn	14619
9	<i>Acacia drummondii</i> subsp. <i>affinis</i>	P3	Bindoon, Muchea, Julimar, Wannamal, Mullewa, New Norcia, Drummond NR		Avon-Mortlock	11229
10	<i>Acacia eremophila</i> var. <i>variabilis</i>	P3	Ardath, Comet Vale, Zanthus, Balladonia		Avon-Mortlock/Yilgarn	16121
11	<i>Acacia filifolia</i>	P3	Wongan Hills, Burracoppin, Southern Cross, Coorow, Marchagee	May-Nov	Avon-Mortlock/Yilgarn	3337
12	<i>Acacia formidabilis</i>	P3	Wanarra, Perenjori, Paynes Find, Southern Cross, Warralackin, Bungabin Hill		Yilgarn	14076
13	<i>Acacia horridula</i>	P3	Helena Valley - Serpentine	May-Aug	Avon-Mortlock	3373
14	<i>Acacia inophloia</i>	P3	Pederah, Bendering, Muntadgin, Moora, Mt Bebb, Kulin		Avon-Mortlock/Yilgarn	3385
15	<i>Acacia insolita</i> subsp. <i>efoliolata</i>	P3	Brookton, Pingelly, Tutanning, Darkin Swamp	Aug	Avon-Mortlock	14120
16	<i>Acacia isoneura</i> subsp. <i>nimia</i>	P3	Billabong, Murchison River, Ajana, Coorow, Watheroo		Avon-Mortlock	14123
17	<i>Acacia lirellata</i> subsp. <i>lirellata</i>	P3	Coorow, Watheroo, Northam, Quairading, Tammin, Meckering	Jun-Sep	Avon-Mortlock	16978
18	<i>Acacia oncinophylla</i> subsp. <i>oncinophylla</i>	P3	Mogumber, Mundaring, John Forrest NP, Serpentine, Mt Lennard, Dwellingup		Avon-Mortlock	14129
19	<i>Acacia phaeocalyx</i>	P3	Kellerberrin, Wongan Hills, Tammin, Quairading	Apr-Dec	Avon-Mortlock/Yilgarn	3486
20	<i>Acacia pulchella</i> var. <i>reflexa</i> acuminate bracteole variant (RJ Cumming 882)	P3	Wannamal, Bindoon, York, Boonanarring		Avon-Mortlock	14927
21	<i>Acacia repanda</i>	P3	Lake Hurlstone, Lake Carmody, Wongan Hills, The Basin		Avon-Mortlock/Yilgarn	14139
22	<i>Acacia ridleyana</i>	P3	Northampton, Gregory, Murchison River, Mogumber		Avon-Mortlock	3521

23	<i>Acacia scalena</i>	P3	Wubin, Buntine Reserve, Nugadong, Ballidu, Latham, Maya, Petruder Rocks	May-Sep	Avon-Mortlock	14644
24	<i>Acacia singula</i>	P3	Lake Grace, Lake King, Hatter Hill, Pyramid Lake, South Ironcap, Digger Rocks		Yilgarn	14141
25	<i>Acacia undosa</i>	P3	Belka, Lake King, Hyden, Lake Magenta, Tammin, Warralackin, Forrestania	Aug-Sep	Avon-Mortlock/Yilgarn	14152
26	<i>Adenanthos cygnorum</i> subsp. <i>chamaephyton</i>	P3	Chidlow, Mundaring, Collie, Bindoon, Muchea, Sawyers Valley		Avon-Mortlock	11336
27	<i>Allocasuarina grevilleoides</i>	P3	Three Springs - Mogumber, Ellis Brook, Darling range	Sep-Nov	Avon-Mortlock	1729
28	<i>Angianthus micropodioides</i>	P3	Perth, Meckering, Mongers Lake, Bunjil, Warriedar, Mollerin		Avon-Mortlock	7831
29	<i>Angianthus prostratus</i>	P3	Glenorn Stn, Baladjie Lake NR, Quairading, Lake Barlee, Bulga Downs Stn, Kalgoorlie	Jul-Sept	Yilgarn	
30	<i>Anigozanthos bicolor</i> subsp. <i>exstans</i>	P3	Meckering, Pingelly, Meenaar	-	Avon-Mortlock	11357
31	<i>Arnocrinum drummondii</i>	P3	Gunyidi, Watheroo, Kalbarri, Cooloomia, Mullewa, (Monkopen)	Mar-Sep-Dec	Avon-Mortlock	1262
32	<i>Austrostipa blackii</i>	P3	Merredin, Dalwallinu, Jaurdi, Widgiemooltha, eastern States, Tutanning Nature Reserve		Avon-Mortlock/Yilgarn	17232
33	<i>Baeckea</i> sp. Elsewhere Road (ME Trudgen 5420)	P3	Chiddarcooping, Walyahmoning, Yandegin Hill, Mukinbudin	Sep-Oct	Yilgarn	20613
34	<i>Baeckea</i> sp. Hatter Hill (KR Newby 3284)	P3	Yokrakine, Hatter Hill, Frank Hann NP	July,Oct	Yilgarn	20615
35	<i>Baeckea</i> sp. Hyden (JM Brown 141)	P3	Hyden, Dongolocking, Tarin Rock, Pingaring, Bendering, Dragon Rocks	May,Aug-Oct	Yilgarn	17128
36	<i>Baeckea</i> sp. Merredin (K.R. Newbey 2506)	P3	Merredin, Norpa, Varley, Hatter Hill, Gibb Roack, Lucy Rock, Burracoppin	Aug-Oct	Yilgarn	19296
37	<i>Baeckea</i> sp. Parker Range (M Hislop & F Hort MH2968)	P3	Parker Range, Die Hardy Range	Aug	Yilgarn	20804
38	<i>Baeckea</i> sp. Tammin (R Coveny 8319 & B Habberley)	P3	Billyacattling Hill, Mt Stevens, Kellerberrin, Waddouring, Yellowdine, Welbungin, North Bungulla NR, Tammin, Youdegin	Aug-Sep	Avon-Mortlock/Yilgarn	20614
39	<i>Banksia dallanneyi</i> subsp. <i>pollostata</i>	P3	Moore River, Moora, Watheroo, Wongan Hills, Gillingarra	Aug	Avon-Mortlock	32696
40	<i>Banksia horrida</i>	P3	Tammin, Corrigin, Narembeen, Goomalling, Bruce Rock, Quairading	Oct-Dec	Avon-Mortlock/Yilgarn	32516
41	<i>Banksia kippistiana</i> var. <i>paenepeccata</i>	P3	Warradarge Hill, Lesueur NP, Eneabba, Wannamal, Regans Ford, Gingin	Sep-Oct	Avon-Mortlock	32216
42	<i>Banksia lullfitzii</i>	P3	Southern Cross, Frank Hann N.P., Coolgardie	Mar-May	Yilgarn	1831
43	<i>Banksia pteridifolia</i> subsp. <i>vernalis</i>	P3	Dandaragan, Alexander Morrison N.P., Three Springs, Forrestfield, Gillingarra, Boonanarring NR, Maida Vale, Gooseberry Hill	Sep	Avon-Mortlock	32138
44	<i>Banksia rufa</i> subsp. <i>flavescens</i>	P3	Ravensthorpe, Lake King, Frank Hann, Forrestania, Hatters Hill, Bodallin	Aug	Yilgarn	32094
45	<i>Banksia rufa</i> subsp. <i>obliquiloba</i>	P3	Corrigin, Dudinin, Bendering, Boolanelling NR	Sep-Oct	Yilgarn	32092
46	<i>Banksia viscida</i>	P3	Hatter Hill, Digger Rocks, South Ironcap	Jul-Sep	Yilgarn	32014
47	<i>Beaufortia eriocephala</i>	P3	Mt Lesueur, Cataby, Coorow, Mogumber, York, St Ronans N.R.	Sep-Oct	Avon-Mortlock	5384
48	<i>Bossiaea atrata</i>	P3	Ongerup, Dragon Rocks, Hatter's Hill, Dowerin, Lake King, Buniche, Manmanning	May,Jun,Aug	Avon-Mortlock	30251
49	<i>Bossiaea concinna</i>	P3	Cunderdin, Woolgangie, Coolgardie, Lake Mason Stn, Jerramungup, Pithara	Sep,Oct	Avon-Mortlock	3706
50	<i>Brachyloma mogin</i>	P3	Katanning, Corrigin, Brookton, Cherry Tree Pool, Gorge Rock, Kulin, Mt Kokeby, Dalyup, Gibson	May-Jun	Avon-Mortlock	17922

51	<i>Calandrinia porifera</i>	P3	Boorabbin, Jibadji, Fitzgerald River NP, Queen Victoria Spring, Southern Cross, Mukinbudin, Muntagin, South Tammin, Yanneymooring Hill	Oct	Yilgarn	2862
52	<i>Calytrix nematoclada</i>	P3	Lake King, Lake Lockhart, Cairlocup, Bendinger	Nov-Jan	Avon-Mortlock/Yilgarn	5467
53	<i>Calytrix plumulosa</i>	P3	Wubin, (Bencubbin), Koorda, Chiddarcooping, Mt Churchman, Mollerin, Mt Gibson, Bencubbin, Burjil	Oct-Nov	Avon-Mortlock/Yilgarn	5472
54	<i>Chamaescilla gibsonii</i>	P3	Ellen Brook, Yule Brook, Mogumber, Muchea, Drakesbrook, Capel, Brunswick Jun		Avon-Mortlock	19338
55	<i>Chamelaucium</i> sp. Wongan Hills (B.H. Smith 1140)	P3	Coorow, Moore River, Winchester, Hamelin Pool, Damboring, Watheroo		Avon-Mortlock	14257
56	<i>Comesperma calcicola</i>	P3	Kau Rock, Pine Hill, Norseman, Forrestania		Yilgarn	14664
57	<i>Conospermum eatoniae</i>	P3	Goomalling, Quairading, Coorow, Tammin, Watheroo, Hines Hill, Dowerin		Avon-Mortlock/Yilgarn	1870
58	<i>Conospermum scaposum</i>	P3	Mogumber, Cataby, Tincurrin, Nomans Lake, Nambung, Badgingarra, Wandoo Conservation Park, Darkin Swamp	Jan	Avon-Mortlock	1881
59	<i>Cryptandra beverleyensis</i>	P3	Beverley, Narrogin, Kellerberrin, Goomalling, Beaufort River, Bokal	Aug-Sep	Yilgarn	31601
60	<i>Cryptandra dielsii</i>	P3	Manmanning, Tammin, Holt Rock, Durokoppin	Jul-Sep	Avon-Mortlock/Yilgarn	16026
61	<i>Cryptandra polyclada</i> subsp. <i>polyclada</i>	P3	Tammin, Lake King, Boorabbin, Hyden, Forrestania	Ja-F,M,Au-Oc	Avon-Mortlock/Yilgarn	16193
62	<i>Cryptandra stellulata</i>	P3	Morawa, Yandanooka, Carnamah, Kellerberrin	Aug-Sep	Yilgarn	31598
63	<i>Cyanicula fragrans</i>	P3	Paynes Find, Bimbijy Stn, Beacon, Mullewa	Aug-Sep	Yilgarn	15962
64	<i>Daviesia debilior</i> subsp. <i>sinuans</i>	P3	Wongan Hills	May-Jul	Avon-Mortlock	11963
65	<i>Daviesia elongata</i> subsp. <i>implexa</i>	P3	Hopkins NR, Kulin, Newdegate, Lake Grace		Yilgarn	15439
66	<i>Daviesia epiphyllum</i>	P3	Gairdner Range, Warradarge Hill	May-Jul	Avon-Mortlock	3809
67	<i>Daviesia uncinata</i>	P3	Quairading, Yoting, Varley, Newdegate, Tammin, Yilliminning		Avon-Mortlock	14288
68	<i>Dicrastylis reticulata</i>	P3	Kumminin, Yorkrakine, Wongan Hills, Damboring	Aug-Dec	Avon-Mortlock/Yilgarn	6773
69	<i>Dicrastylis velutina</i>	P3	Watheroo NP, Yorkrakine, Bindi Bindi, Elphin	Nov-Dec	Avon-Mortlock	6775
70	<i>Dillwynia acerosa</i>	P3	Coolgardie, Scaddan, Hyden, Condingup, Boxwood Hills, Ravensthorpe, Grass Patch	-	Yilgarn	3862
71	<i>Elatine macrocalyx</i>	P3	Lake Cronin, Googarrie, Northern Territory	May-Oct	Yilgarn	19919
72	<i>Eucalyptus exigua</i>	P3	Lake Cronin, Hyden, Mt Day, Middle Ironcap, Lake Varley, Narembeen, Benari	-	Yilgarn	13515
73	<i>Eucalyptus histophylla</i>	P3	Newman Rock, Balladonia, W of Lake Johnson	Apr-Jun	Yilgarn	12888
74	<i>Eucalyptus macrocarpa</i> x <i>pyriformis</i>	P3	N of Bolgart, Calingiri, Piawanning, Wongan Hills, Watheroo, Irwin View, Moora	-	Avon-Mortlock	16887
75	<i>Eucalyptus sargentii</i> subsp. <i>onesia</i>	P3	Meckering, Carani, Gomalling, Piawanning, Cunderdin, York		Avon-Mortlock	19644
76	<i>Eucalyptus spathulata</i> subsp. <i>salina</i>	P3	Tammin, Quairading, Corrigin, Beverley, Pingaring, Kondinin		Avon-Mortlock/Yilgarn	20273

77	<i>Eucalyptus subangusta</i> subsp. <i>virescens</i>	P3	Manmanning, Watheroo, Naremben, Cowcowing, Tandegin		Avon-Mortlock/Yilgarn	12880
78	<i>Euryomyrtus leptospermoides</i>	P3	Koorarawalyee, Burracoppin, Korbel, Karalee, Merredin, Muntagin, Boodarding Rock, NW of Norseman	Aug-Nov	Yilgarn	17027
79	<i>Euryomyrtus patrickiae</i>	P3	Burnerbinmah Stn, Sandstone, Yalgoo, Youanmi Downs, Gossan Hills, Warrawagine Stn	Mar,Jul,Sep,Oct	Yilgarn	19723
80	<i>Euryomyrtus recurva</i>	P3	Wubin, Youanmi, Lake Austin, Wanarie Stn, Lake Moore		Avon-Mortlock/Yilgarn	17914
81	<i>Eutaxia acanthoclada</i> ms	P3	Hatter Hill, Forrestania, Mt Gibbs, Hyden	-	Yilgarn	23491
82	<i>Eutaxia actinophylla</i>	P3	Norseman, Salmon Gums, Mt Newmont	Sep-Dec	Yilgarn	30791
83	<i>Eutaxia nanophylla</i>	P3	Stirling Range, Gnowangerup, Borden, Duranillin, Lake Magenta, Murdong, Lake Cronin	Sep-Nov	Yilgarn	20743
84	<i>Eutaxia rubricarina</i>	P3	Quairading, Beverley, Yellowdine, Forrestania	Aug-Oct	Avon-Mortlock/Yilgarn	
85	<i>Frankenia drummondii</i>	P3	Hyden, Lake King, Johnston Lake	-	Yilgarn	5198
86	<i>Frankenia georgei</i>	P3	Kalgoorlie, Laverton, Mt Manning Range	-	Yilgarn	5201
87	<i>Frankenia glomerata</i>	P3	Waeel, Cunderdin, Lake King, Northam, Little Sandy Desert, Carnarvon Range, Norseman	Mar,Nov	Avon-Mortlock/Yilgarn	5202
88	<i>Gastrolobium axillare</i>	P3	Mt Lesueur, Coomallo Creek, Moora, Wanneroo, Avon Valley NP, Yandan NR	Jul-Sep	Avon-Mortlock	20515
89	<i>Gastrolobium rotundifolium</i>	P3	Yerecoina, Carani, Calingiri	Aug-Sep	Avon-Mortlock	
90	<i>Gastrolobium semiteres</i>	P3	Boorabbin Rock, Southern Cross	Aug-Oct	Yilgarn	12333
91	<i>Gastrolobium spectabile</i>	P3	Lake Grace, Fitzgerald River NP, Muntadgin, Cunderdin, Trayning, Kununoppin		Avon-Mortlock/Yilgarn	11142
92	<i>Gastrolobium stenophyllum</i>	P3	Naremben, Fitzgerald River	Oct-Nov	Yilgarn	3925
93	<i>Gnephosis multiflora</i>	P3	Meckering - Mortlock River Flats	Nov	Avon-Mortlock	
94	<i>Gompholobium cinereum</i>	P3	Wongan Hills, Mullewa, Wilroy, Mt Burges, Merredin, Koolyanobbing, Boorabbin	Sep-Oct	Avon-Mortlock/Yilgarn	29285
95	<i>Gompholobium wonganense</i>	P3	Wongan Hills, Ballidu	Sep-Nov	Avon-Mortlock	23488
96	<i>Gonocarpus pycnostachyus</i>	P3	Israelite Bay, Merivale, Mt Heywood, Mt Baring, Little Sandy Desert	Oct-Jan,Apr	Yilgarn	6163
97	<i>Goodenia perryi</i>	P3	Bunjil, Mt Gibson, Mollerin, Lake Moore, Ballidu, Kalannie, Wonganderrah	-	Avon-Mortlock	12572
98	<i>Goodenia trichophylla</i>	P3	Eneabba, Lake Grace, Cascades, Yellowdine, Jitarning	-	Avon-Mortlock/Yilgarn	7557
99	<i>Grevillea asparagoides</i>	P3	Bindi Bindi, Perenjori, Wubin, Wongan Hills, Morawa, Latham	Jul-Sep	Avon-Mortlock	1958
100	<i>Grevillea brachystylis</i> subsp. <i>brachystylis</i>	P3	Busselton, Ruabon, Yoongarillup, Jarrahwood, Margaret River	Aug-Nov	Avon-Mortlock	14011
101	<i>Grevillea candicans</i>	P3	Dalwallinu, Mingenew, Geraldton, Galena, Yuna, Mullewa	Jul-Oct	Avon-Mortlock	1974
102	<i>Grevillea eriobotrya</i>	P3	Ninghan, Koorda, Mollerin to Mukinbudin, Bodallin, Beacon, Lake Moore	-	Avon-Mortlock/Yilgarn	2000
103	<i>Grevillea fastigiata</i>	P3	Bandalup, Ravensthorpe, Phillips River, Jerdacuttup	Aug-Oct,Jan	Yilgarn	15840
104	<i>Grevillea florida</i>	P3	Bindoon, New Norcia, Cataby	Jul-Sep	Avon-Mortlock	19567
105	<i>Grevillea fulgens</i>	P3	Mt Desmond, Mt Short	Aug-Sep	Yilgarn	2008

106	<i>Grevillea georgeana</i>	P3	Die Hardy Range, Mt Manning, Mt Correll, Helena and Aurora Range, Bungalbin Hill	Jul	Yilgarn	2009
107	<i>Grevillea granulosa</i>	P3	Mullewa, Bowgada, Morawa, Pintharuka	Jul	Avon-Mortlock	2013
108	<i>Grevillea haplantha</i> subsp. <i>recedens</i>	P3	Manmanning, Kodjokodjin, Mollerin, Cowcowing, Yorkrakine, Cunderdin	Jun-Aug	Avon-Mortlock/Yilgarn	14414
109	<i>Grevillea insignis</i> subsp. <i>elliottii</i>	P3	Hatters Hill, South Ironcap, Middle Ironcap, Digger Rocks, Gibbs Rock	Jul-Nov	Yilgarn	14424
110	<i>Grevillea manglesii</i> subsp. <i>dissectifolia</i>	P3	North Bannister, Gleneagle, Helena Valley, Dwellingup, Wandering	Nov	Avon-Mortlock	13451
111	<i>Grevillea pilosa</i> subsp. <i>redacta</i>	P3	Holt Rock, Lake Cronin, Mt Holland	Sep	Yilgarn	14416
112	<i>Grevillea roycei</i>	P3	Goomalling, Cunderdin, Dowerin, Brookton	Aug	Avon-Mortlock	2085
113	<i>Grevillea tenuiloba</i>	P3	Kirwan, Dandaragan, Canna, Pindar, Morawa	Sep	Avon-Mortlock	2103
114	<i>Guichenotia impudica</i> ms	P3	Konnongoring, Wongan Hills, Corrigin, Kellerberrin, Tammin, Mogumber, Walgoolan	-	Avon-Mortlock/Yilgarn	17776
115	<i>Guichenotia tuberculata</i> ms	P3	Mogumber, New Norcia, Gillingarra, Wannamal, Bullsbrook	Aug,Sep	Avon-Mortlock	16952
116	<i>Gunnioopsis rubra</i>	P3	Perenjori, Paynes Find, Ballidu, Bullfinch, Laverton	Sep-Oct	Avon-Mortlock/Yilgarn	2809
117	<i>Hemiandra coccinea</i>	P3	Mullewa, Tardun, Wongan Hills, Quairading	Aug-Oct	Avon-Mortlock	6834
118	<i>Hibbertia glabriuscula</i>	P3	S of Carrabin	Sep	Yilgarn	14457
119	<i>Hibbertia glomerata</i> subsp. <i>wandoo</i>	P3	Beverley, Wandoo CP, Boyagin NR, Brookton	Feb, Apr, Aug, Oct	Avon-Mortlock	19932
120	<i>Hibbertia graniticola</i>	P3	Chiddarcooping Hill, Chutawalakin Hill, Warralakin Rock	Sep	Yilgarn	14458
121	<i>Hibbertia pachyphylla</i>	P3	Frank Hann NP, Forrestania	Sep-Nov	Yilgarn	20416
122	<i>Hopkinsia anoectocolea</i>	P3	Arrowsmith, Eneabba, Meckering, Cunderdin (Mortlock River), Tammin	-	Avon-Mortlock	17742
123	<i>Isoetes brevicula</i>	P3	Graham Rock, Lake Varley, Jilakin, Muntadgin, Glenelg Hills, Narembreen, The Humps	Sep	Yilgarn	8
124	<i>Isolepis australiensis</i>	P3	East of Coujinup Hill, Lake Cronin, Eastern States, NZ	Jun,Sep	Yilgarn	14539
125	<i>Keraudrenia adenogyna</i> ms	P3	Forrestania, Cairlocup, Frank Hann NP, Mt Holland	Sep	Yilgarn	16991
126	<i>Lasiopetalum fitzgibbonii</i>	P3	Jilbadji, Jilakin, Nyabing, Jerramungup, Boxwood Hill, Bendering	Sep-Nov	Yilgarn	5032
127	<i>Lechenaultia galactites</i>	P3	Kokardine, Nth Beacon, Latham, Perenjori, Dandaragan, Koorda, Wubin, Buntine	Jun,Sep,Oct	Yilgarn	19117
128	<i>Lepidium genistoides</i>	P3	Walyahmoning Rock, Boorabbin, (Cowcowing), Marvel Loch, (Mukinbudin)	Oct-Dec	Avon-Mortlock/Yilgarn	3028
129	<i>Lepidobolus densus</i> ms	P3	Coorow, Marchagee, Dirk Hartog Is., Shark Bay, Kalbarri NP, Three Springs, Morawa	Oct	Avon-Mortlock/Yilgarn	13774
130	<i>Lepidosperma</i> sp. Pigeon Rocks (H. Pringle 30237)	P3	Moorine Rock			
131	<i>Leucopogon</i> sp. Bungulla (RD Royce 3435)	P3	Wongan Hills, North Bungulla, Kellerberrin, Manmanning	May,Jun	Yilgarn	

132	<i>Leucopogon</i> sp. <i>Ironcaps</i> (N Gibson & K Brown 3070)	P3	South Ironcap, Middle Ironcap, Hatters Hill, Frank Hann NP, Welsh NR, Holleton	Aug	Yilgarn	19518
133	<i>Leucopogon</i> sp. <i>Yanneymoon</i> (F. Mollemans 3797)	P3	Mukinbudin			
134	<i>Levenhookia octomaculata</i>	P3	Kalbarri, Northampton, Bolgart, Canna, Lesueur, Ravensthorpe, Wicherina, Dinninup, Perenjori	Nov	Avon-Mortlock	7672
135	<i>Melaleuca barlowii</i>	P3	Latham, Koolanooka Hills, Yandanooka, Morawa	Apr	Avon-Mortlock	18275
136	<i>Melaleuca ochroma</i>	P3	Mount Holland	Oct-Nov	Yilgarn	
137	<i>Melaleuca sclerophylla</i>	P3	Manmanning, Marchagee, Wongan Hills, New Norcia, Dalwallinu, Moora, Miling, Morawa, Caljie	-	Avon-Mortlock	5963
138	<i>Microcorys tenuifolia</i>	P3	Morawa, Kalbarri NP, Yuna, Wongan Hills, Marchagee	Oct-Jan	Avon-Mortlock	6903
139	<i>Microseris scapigera</i>	P3	Scaddan, Marvel Loch, Lake Grace, Fraser range, Norseman, Southern Hills Stn	Sep-Oct	Yilgarn	8103
140	<i>Mimulus repens</i>	P3	Yalgoo, Murchison River, York, Lake Edith Withnell, Little Sandy Desert, NT, NSW	Aug-Nov	Avon-Mortlock	7084
141	<i>Mirbelia densiflora</i>	P3	Frank Hann NP, Kumarl, Hatter Hill	Jan	Yilgarn	4088
142	<i>Monotoca leucantha</i>	P3	Mogumber, New Norcia, Bruce Rock, Pederah, Pingaring, Flat Rock, Fitzgerald River NP, Buniche Siding	Sep	Avon-Mortlock/Yilgarn	6461
143	<i>Myriocephalus appendiculatus</i>	P3	Eneabba, Midland, Mt Ragged, Ellen Brook, Nallan Stn, Three Springs	Sep-Dec	Avon-Mortlock	8114
144	<i>Neurachne annularis</i> ms	P3	Bungalbin Hill, Helena & Aurora Range, Mount Manning Range		Yilgarn	31791
145	<i>Opercularia rubioides</i>	P3	Quarading	Sep-Nov	Avon Mortlock	
146	<i>Oxymyrrhine plicata</i>	P3	Hyden, Lake King, Kulin, Frank Hann NP	Oct-Dec	Yilgarn	
147	<i>Parmeliopsis macrospora</i>	P3	Kalgoorlie, Ninghan Stn, Wanjarri NR		Yilgarn	27920
148	<i>Persoonia chapmaniana</i>	P3	Carnamah, Moora, Koorda, Marchagee, Eneabba, Kalannie	Sep-Nov	Avon-Mortlock	14084
149	<i>Persoonia cymbifolia</i>	P3	Grass Patch, Scaddan, Mt Burdett		Yilgarn	15136
150	<i>Persoonia pungens</i>	P3	Dowerin, Kellerberrin, Manmanning, Bruce Rock, Coorow, Cadoux		Avon-Mortlock/Yilgarn	2269
151	<i>Persoonia rudis</i>	P3	Gairdner Range, Muchea, Jurien, Alexander Morrison NP, Lesueur N.P., Eneabba	Sep-Nov	Avon-Mortlock	2271
152	<i>Petrophile biternata</i>	P3	Jurien, Moora, Marchagee, Mogumber, Coorow	Sep	Avon-Mortlock	2285
153	<i>Petrophile pauciflora</i>	P3	Bimbiji, Mt Magnet, Mileura, Woolgorong	Aug	Yilgarn	14441
154	<i>Petrophile plumosa</i>	P3	Bindoon, Mogumber, New Norcia	Jul-Nov	Avon-Mortlock	2305
155	<i>Petrophile</i> sp. <i>Pithara</i> (P. Armstrong s.n. PERTH 06592090)	P3	Pithara		Avon-Mortlock	
156	<i>Phebalium brachycalyx</i>	P3	Wongan Hills, (Southern Cross), Wialki, Muntadgin, Tandagin, Digger Rocks	-	Avon-Mortlock/Yilgarn	4496
157	<i>Phebalium drummondii</i>	P3	Dowerin, Bonnie Rock, Wialki, Koorda-Mollerin, Manmanning	Oct-Nov	Avon-Mortlock/Yilgarn	4499
158	<i>Pityrodia</i> sp. <i>Yilgarn</i> (AP Brown 2679)	P3	Forrestania, Marvel Loch, Jilbadji, Norseman, Southern Cross (Barker Lake), Widgiemooltha	Oct,Nov	Yilgarn	20602
159	<i>Podotheca pritzelii</i>	P3	Wongan Hills, Kwolyin, Lake Anneen, Nannine, Nangeen Hill, Lake Champion, Shackleton, Derdibin Rock, Baladjie Lake NR, Wannarra Stn, Mullewa, Morawa	Oct	Yilgarn	
160	<i>Podotheca uniseta</i>	P3	Mongers Lake, Lake Moore, Koolanooka, Watheroo, Morawa, Lake O'Grady	Sep	Avon-Mortlock/Yilgarn	12732
161	<i>Prostanthera nanophylla</i>	P3	Cadoux, Southern Cross, Jilbadji,	Oct-Nov	Avon-Mortlock/Yilgarn	12704



			Hyden, Mt Day			
162	<i>Psammomoya implexa</i>	P3	Wilroy, Whitewells - Ninghan, Wubin, Gabyon Stn, Morawa	Aug-Oct	Avon-Mortlock	19913
163	<i>Pseudactinia</i> sp. Bungalbin Hill <small>(FH &amp; MP Mollemans 3069)</small>	P3	Between Bimbigy and Diemals, Helena Aurora Range	Jun-Jul	Yilgarn	18390
164	<i>Pultenaea daena</i>	P3	Fitzgerald, West River, Lake Cobham, Digger Rocks, Frank Hann NP, Lake Johnston	Oct	Yilgarn	20783
165	<i>Rhodanthe pyrethrum</i>	P3	Dobaderry Swamp	Oct-Dec	Avon-Mortlock	
166	<i>Sarcocornia globosa</i>	P3	Cunderdin, One Mile Rocks, Lake Fox, Meckering, Coorow		Avon-Mortlock	2592
167	<i>Schoenus benthamii</i>	P3	Mogumber, Kenwick, Busselton, Elgin, Pinjarra, Kodjilup N.R., Bunbury, Condingup, Bremer Bay		Avon-Mortlock	974
168	<i>Schoenus capillifolius</i>	P3	Botherling, Beverley	Oct-Nov	Avon-Mortlock	
169	<i>Schoenus griffinianus</i>	P3	Wongan Hills	Sep-Oct	Avon-Mortlock	
170	<i>Spartothamnella</i> sp. Helena & Aurora Range <small>(P3, Armstrong 150-168)</small>	P3	Helena & Aurora Range, Blue Hill Range, Remlap, Koolyanobbing		Yilgarn	20767
171	<i>Stenanthemum bremerense</i>	P3	Bremer Range, Marvel Loch	Apr-Jun, Oct-Nov	Yilgarn	31712
172	<i>Stenanthemum newbeyi</i>	P3	Bungalbin Hill, Koolyanobbing, Die Hardy Range, Ennuin Stn, Mt Manning	Au-Sep, De-Ja	Yilgarn	14797
173	<i>Stylidium choreanthum</i>	P3	Helena & Aurora Range, Ghooli, Southern Cross, Kambalda, Koolyanobbing, Jaurdi Station	Sep-Oct	Yilgarn	7701
174	<i>Stylidium cymiferum</i>	P3	Calingiri, Bindoon, Chittering, Toodyay	Oct	Avon-Mortlock	12843
175	<i>Stylidium longitubum</i>	P3	Upper Swan, Bullsbrook, Bunbury, Midland, Busselton, Arthur River, Jandakot	Nov	Avon-Mortlock	7756
176	<i>Stylidium pulviniforme</i>	P3	Dulagin Rock, Lake Johnston, Mt Madden, Lake King, Pallarup, Jerdacuttup, Weowanie Rock, Frank Hann NP	Sep-Nov	Yilgarn	13789
177	<i>Stylidium sacculatum</i>	P3	Wongan Hills, Bolgart, Gillingarra, Coomberdale	Oct-Nov	Avon-Mortlock	19260
178	<i>Stylidium sejunctum</i>	P3	Ironcaps, Forrestiana	Sep-Oct	Yilgarn	18061
179	<i>Styphelia</i> sp. Bullfinch (M.Hislop 3574)	P3	Bullfinch, Koolyanobbing, Die Hardy Range, Bullabulling	Apr/Jul	Yilgarn	33018
180	<i>Synaphea constricta</i>	P3	Bendering, Kellerberrin, Dowerin, Minnivale, Wongan Hills, Manmanning, Duracoppin NR	Jun-Sep	Avon-Mortlock/Yilgarn	16868
181	<i>Synaphea diabolica</i>	P3	York	Aug-Nov	Avon-Mortlock	31765
182	<i>Synaphea tripartita</i>	P3	Dragon Rocks, Flat Rock	Jul-Oct	Avon-Mortlock	16763
183	<i>Tecticornia fimbriata</i>	P3	Damboring		Avon-Mortlock	
184	<i>Tetradlea pilifera</i>	P3	Two Rocks, Chidlow, John Forrest NP	Aug-Sep	Avon-Mortlock	4540
185	<i>Tetradlea retrorsa</i>	P3	Wongan Hills, Tutanning	Oct	Avon-Mortlock	4543
186	<i>Tetradlea similis</i>	P3	Bindoon, Mt Dale area, Wandoo CP	Aug-Sep	Avon-Mortlock	4545
187	<i>Thomasia tenuivestita</i>	P3	Wongan Hills, Winchester, Bendering, York, Dingo Rock, Konongorring, Champion Bay, Boothendarra	Jul, Sep-Oct	Avon-Mortlock	16288
188	<i>Thysanotus cymosus</i>	P3	Muntadgin, Karlgarin, Hyden, Lake Grace, Ongerup, Kulin, Pingelly, Kojonup	Sep-Oct	Yilgarn	1327
189	<i>Thysanotus tenuis</i>	P3	Northam, Wagin, Tincurrin, Pingelly, Toolibin NR	Sep	Avon-Mortlock/Yilgarn	1355
190	<i>Trachymene croniniana</i>	P3	Stirling Range, Bruce Rock, Muntadgin, Lake Grace	Sep-Dec	Yilgarn	6267
191	<i>Tricoryne</i> sp. Morawa <small>(GJ Keighery &amp; N Gibson 6759)</small>	P3	Bimbijy, Billiburning Rock	Oct	Yilgarn	29479

192	<i>Urodon capitatus</i>	P3	Wyalkatchem, Ballidu, Mollerin, Wubin, Miling, Koorda, Watheroo, Perenjori	Sep-Dec	Avon-Mortlock	10880
193	<i>Verticordia gracilis</i>	P3	Mt Holland Rd, Korbel Siding, Koonadgin Siding, Dragon Rocks, Hyden, Merredin, Forrestania	Nov	Yilgarn	12427
194	<i>Verticordia huegelii</i> var. <i>tridens</i>	P3	N of Porongurups, Wongan Hills, Williams, Wansborough, Barberton, Cunderdin, Calingiri, Cranbrook, Toodyay	Oct	Avon-Mortlock	12431
195	<i>Verticordia insignis</i> subsp. <i>eomagis</i>	P3	Watheroo N.P., Doodenoo Creek, Coorow - Greenhead Road, Moora	Oct	Avon-Mortlock	12434
196	<i>Verticordia mitchelliana</i> subsp. <i>michelliana</i>	P3	Wyalkatchem, Bencubbin, Koorda	Oct	Avon-Mortlock	
197	<i>Verticordia mitodes</i>	P3	Chiddarcooping, Moorine Rock to Mt Holland, Boorabbin NR	Dec	Yilgarn	12442
198	<i>Verticordia muelleriana</i> subsp. <i>muelleriana</i>	P3	Coorow to S of Three Springs - Eneabba Road	Nov,Dec	Avon-Mortlock	14716
199	<i>Verticordia rutilastra</i>	P3	Eneabba	Oct	Avon-Mortlock	12456
200	<i>Verticordia serrata</i> var. <i>linearis</i>	P3	Muceha, Glen Forest, Clackline, St Ronan's Well	Sep	Avon-Mortlock	12460
201	<i>Verticordia stenopetala</i>	P3	Mt Holland, Moorine Rock, Queen Victoria Rock, Marvel Loch, Carrabin	Oct	Yilgarn	6121
202	<i>Verticordia venusta</i>	P3	Perenjori to Moonijin, Wongan Hills, Buntine	Nov	Avon-Mortlock/Yilgarn	12468
203	<i>Xanthoparmelia hypoleiella</i>	P3	South west coast, S. Africa		Avon-Mortlock/Yilgarn	28141
204	<i>Xanthoparmelia nashii</i>	P3	King Rocks		Yilgarn	18000
<b>TOTAL P3 = 204</b>						

**Priority Four Flora in the Central Wheatbelt District**

<b>Priority Four (P4)</b>						
<b>No.</b>	<b>Species/Taxon</b>	<b>Cons. Code</b>	<b>Distribution</b>	<b>Flowering period</b>	<b>Old District</b>	<b>Taxon ID</b>
1	<i>Acacia alata</i> var. <i>platyptera</i>	P4	Mogumber, New Norcia, Wandoo CP, Brookton, Tutanning	Jun-Aug	Avon-Mortlock	16110
2	<i>Acacia botrydion</i>	P4	Wongan Hills	Jul-Dec	Avon-Mortlock	3243
3	<i>Acacia cuneifolia</i>	P4	Pony Hill, Boyagin Rock, Wandoo CP, Collie, Kojonup	Sep-Oct	Avon-Mortlock	14067
4	<i>Acacia merrickiae</i>	P4	Kellerberrin, Bungulla	Jan-Dec	Yilgarn	3441
5	<i>Acacia semicircinalis</i>	P4	Wongan Hills	Sep-Jan	Avon-Mortlock	3536
6	<i>Anigozanthos humilis</i> subsp. <i>chrysanthus</i>	P4	S of Moora, Mogumber, Morre River, Toodyay	Jul-Sep	Avon-Mortlock	11957
7	<i>Asterolasia grandiflora</i>	P4	Toodyay-York	Jul-Oct	Avon-Mortlock	4398
8	<i>Astroloma</i> sp. <i>Cataby</i> (EA Griffin 1022)	P4	Eneabba, Gairdner Range, Cataby, Calingiri, Bindoon, New Norcia	Feb-Jul	Avon-Mortlock	14500
9	<i>Banksia bella</i>	P4	Wongan Hills	Aug-Sep	Avon-Mortlock	32166
10	<i>Banksia benthamiana</i>	P4	Dalwallinu, Mullewa	-	Avon-Mortlock	1804
11	<i>Banksia chamaephyton</i>	P4	Mogumber, Coomallo Creek, Eneabba, Boonanarring	Oct-Dec	Avon-Mortlock	1810
12	<i>Banksia comosa</i>	P4	Wongan Hills	Aug-Sep	Avon-Mortlock	32619
13	<i>Banksia insulanemorecincta</i>	P4	Brady Block, Gibbs SF, W Brookton, Leona SF	Jun-Sep	Avon-Mortlock	32496
14	<i>Banksia platycarpa</i>	P4	Watheroo, Badgingarra, Alexander Morrison N.P., Gillingarra, Tathra	Jul-Oct	Avon-Mortlock	32163
15	<i>Banksia shanklandiorum</i>	P4	Dowerin, Merredin, Cadoux, Mt Hampton, Nth of Hyden, Tandagin, Manmanning	Jun-Aug	Avon-Mortlock/Yilgarn	32075
16	<i>Banksia wonganensis</i>	P4	Wongan Hills	Sep	Avon-Mortlock	32013
17	<i>Boronia tenuis</i>	P4	Kalamunda, Lesmurdie Falls, Oakley Dam, North Dandalup, Dunsborough		Avon-Mortlock	4444
18	<i>Caladenia integra</i>	P4	York-Kendenup, Pingelly	Sep-Oct	Avon-Mortlock	1598
19	<i>Caladenia speciosa</i>	P4	Mogumber	Sep-Oct	Avon-Mortlock	
20	<i>Calamphoreus inflatus</i>	P4	E of Hyden, Mt Holland, Forrestania	Nov-Dec	Yilgarn	15050
21	<i>Calothamnus accedens</i>	P4	Piawaning, Moora, Bindi Bindi	Feb	Avon-Mortlock	5396
22	<i>Calothamnus brevifolius</i>	P4	Marchagee, Tammin, Dowerin, Piawaning, Quairading, Pingelly, Corrigin, North Kalgarin NR	Jan-Feb	Avon-Mortlock	5403
23	<i>Calothamnus pachystachyus</i>	P4	Bindoon, Mogumber, New Norcia	Aug-Oct	Avon-Mortlock	5421
24	<i>Calothamnus rupestris</i>	P4	Red Hill, Gosnells, St Ronans N.R., Boyagin Rock	Aug-Oct	Avon-Mortlock	5428
25	<i>Centrolepis caespitosa</i>	P4	South Stirling, Pearce, Meckering, (Byford), Youngs Siding, Narrikup, Orange Grove	Nov	Avon-Mortlock	1123
26	<i>Chordifex chaunocoleus</i>	P4	Darling Scarp, Badgingarra, Clackline	Aug-Sep	Avon-Mortlock	17827

27	<i>Cyanicula ixiooides</i> subsp. <i>ixiooides</i>	P4	Beechina, Wooroloo, Datatine, Perth, Toodyay, Calingiri, Walpole, Gingin	Sep	Avon-Mortlock	13826
28	<i>Darwinia</i> sp. <i>Chiddarcooping</i> <small>(SD Hopper 6944) (aff. <i>purpurea</i>)</small>	P4	Chiddarcooping Hill, Billyacatting Hill, Corrigin, Nungarin	Jul-Sep	Yilgarn	16027
29	<i>Darwinia</i> sp. <i>Dryandra</i> (G.J. Keighery 9295)	P4	Dryandra, Westdale		Avon-Mortlock	14265
30	<i>Darwinia thymoides</i> subsp. <i>St Ronans</i> <small>(J.J. Alford &amp; G.J. Keighery 64)</small>	P4	St Ronans N.R., Dryandra, Gunapin	Oct-Nov	Avon-Mortlock	18141
31	<i>Daviesia oxylobium</i>	P4	Bruce Rock-Meckering	Jul-Aug	Avon-Mortlock/Yilgarn	14755
32	<i>Daviesia purpurascens</i>	P4	Great Victoria Desert, Kondinin, Hyden, Bendering, Dragon Rocks	Aug-Sep	Avon-Mortlock/Yilgarn	3836
33	<i>Daviesia spiralis</i>	P4	Wongan Hills	Sep-Jan	Avon-Mortlock	3841
34	<i>Diuris recurva</i>	P4	Kalbarri-Moora, W of Northampton	Jul-Aug	Avon-Mortlock	12936
35	<i>Eremaea blackwelliana</i>	P4	Clackline, Hoddy Well	Sep-Oct	Avon-Mortlock	13819
36	<i>Eremophila biserrata</i>	P4	Lake Cronin, Hyden, Mt Holland, Mt Heywood		Yilgarn	7184
37	<i>Eremophila caerulea</i> subsp. <i>merrallii</i>	P4	Bruce Rock, Jilbadji, Hunt Range, Burra Rock	Aug-Jan	Yilgarn	13641
38	<i>Eremophila racemosa</i>	P4	E of Hyden, Lake Cronin	Oct-Dec	Yilgarn	7260
39	<i>Eremophila serpens</i>	P4	Hyden-Newdegate, Esperance, Lake Magenta, Ravensthorpe, Lake Milarup	Jan-Dec	Yilgarn	7268
40	<i>Eucalyptus caesia</i>	P4	Boyagin Rock, Mt Caroline, The Humps, Yanneymooring Rock, Chiddarcooping Hill, Billyacatting Hill, Chutawalak Hill, Coorancooping Hill	May-Aug	Avon-Mortlock/Yilgarn	
41	<i>Eucalyptus cerasiformis</i>	P4	Mt Day-Lake Hope	Aug-Mar	Yilgarn	5587
42	<i>Eucalyptus deflexa</i>	P4	Mt Day, Mt Gibbs, Coujinup Hill, Mt Madden, Lake King, Frank Hann NP	Aug-Oct	Yilgarn	5617
43	<i>Eucalyptus exilis</i>	P4	Mt Lesueur, Coorow, Boyagin Rock, Wandering, Bindoon, Gunapin, Coomallo NR, Beverley	Dec-Apr	Avon-Mortlock	5642
44	<i>Eucalyptus georgei</i> subsp. <i>fulgida</i>	P4	Hyden, Mt Holland, Lake Cronin,	Jan-Mar	Yilgarn	13523
45	<i>Eucalyptus loxophleba</i> x <i>wandoo</i>	P4	Clackline, Mundaring, Highbury, Katanning	-	Avon-Mortlock	16886
46	<i>Eucalyptus rugulata</i>	P4	South Ironcap, Hatter Hill	Nov	Yilgarn	19634
47	<i>Eucalyptus carnabyi</i> x	P4	Yerecoin, Piawanning, Moora, Calingiri, York, Cooljarloo	-	Avon-Mortlock	16944
48	<i>Gastrolobium callistachys</i>	P4	Kellerberrin, Wongan, Moora, Dandaragan, Northam, Quairading, Gingin, (Esperance)		Avon-Mortlock/Yilgarn	3894
49	<i>Gastrolobium densifolium</i>	P4	Quairading	Sep-Oct	Avon Mortlock	
50	<i>Gonocarpus intricatus</i>	P4	Kellerberrin, Cape Riche, Karoun Hill, Kokerbin, Northcliffe	Oct-Dec	Avon-Mortlock/Yilgarn	6157
51	<i>Grevillea aneura</i>	P4	Lake King, Frank Hann, Peak Charles, Grass Patch, Sheoak Hill, North Cascade	Sep-Mar	Yilgarn	1952
52	<i>Grevillea asteriscosa</i>	P4	Narembeen, Bendering, Kulin, Lake Grace, Bullaring, Kondinin	May, Aug-Nov	Yilgarn	1959
53	<i>Grevillea dissecta</i>	P4	Mt Holland	Feb	Yilgarn	14410
54	<i>Grevillea drummondii</i>	P4	Bindoon, Hay Flat, New Norcia, Yandan Hill	Jun-Oct	Avon-Mortlock	1994
55	<i>Grevillea pimeleoides</i>	P4	Helena Valley, Glen Forrest, Mundaring, Mundaring Weir	Jun-Nov	Avon-Mortlock	13086

56	<i>Grevillea prostrata</i>	P4	Newdegate-Lake King, Ravensthorpe, Marvel Loch, Forrestania	Aug-Oct	Yilgarn	2074
57	<i>Grevillea tetrapleura</i>	P4	Yellowdine, Duladgin Rock, Bungalbin Hill, Mt Correll, Lake Deborah	Jul	Yilgarn	2106
58	<i>Gyrostemon ditrigynus</i>	P4	Lake King, Cascades North, Forrestania, Ravensthorpe, Pingaring, Mt Ridley, Bandalup Hill	-	Yilgarn	2781
59	<i>Haegiela tatei</i>	P4	Grass Patch, Lake Lockhart, Lake King, Badja Station	-	Yilgarn	12627
60	<i>Hemiandra hancocksiana</i> ms	P4	Eneabba-Moora, York	Oct-Jan	Avon-Mortlock	18246
61	<i>Hemigenia conferta</i>	P4	Wongan Hills	Sep-Oct	Avon-Mortlock	6846
62	<i>Hemigenia platyphylla</i>	P4	Mt Bakewell, Stirling Range, Wandering, Harvey	Sep-Oct	Avon-Mortlock	6864
63	<i>Hibbertia miniata</i>	P4	Hay Flat, Bindoon Hill, Julimar, Wannamal	Jul-Oct	Avon-Mortlock	5145
64	<i>Hibbertia montana</i>	P4	Mt Bakewell, Bodakine Hills, Boyagin Rock, Dryandra	Jul-Sep	Avon-Mortlock	5146
65	<i>Hydrocotyle lemnoides</i>	P4	Perth-Bolgart, Lane Poole, Eneabba	Sep-Oct	Avon-Mortlock	6233
66	<i>Lechenaultia pulvinaris</i>	P4	York-Wickepin-Lake Grace, Quairading	Oct-Dec	Avon-Mortlock	7585
67	<i>Lepidium pseudotasmanicum</i>	P4	Yanchep, Wongan Hills, Denmark, Albany, Porongurup R, Jerramungup, Munglinup, Stirling Range, Lake Clifton		Avon-Mortlock	3042
68	<i>Loxocarya albipes</i>	P4	Wongan Hills	Aug-Sep	Avon-Mortlock	17625
69	<i>Microcorys</i> sp. <i>Forrestania</i> (V English 2004)	P4	Mt Holland, Forrestania	Nov-Jan	Yilgarn	18316
70	<i>Microtis quadrata</i>	P4	Albany-Augusta, Pinjarra, Jandakot, Varley	Dec-Jan	Avon-Mortlock	15420
71	<i>Myriophyllum petraeum</i>	P4	Sth Cross-Mt Ragged, Narembreen, Mt Madden, Norseman	Aug-Sep	Yilgarn	6197
72	<i>Persoonia sulcata</i>	P4	John Forrest N.P., Wongamine N.R., Bindoon, Dardadine, Calingiri	Sep-Nov	Avon-Mortlock	2278
73	<i>Regelia cymbifolia</i>	P4	Tambellup, Trayning, Kojonup	Aug-Feb	Yilgarn	6013
74	<i>Regelia megacephala</i>	P4	Moora, Coomberdale, Dalaroo	Dec	Avon-Mortlock	6015
75	<i>Rumex drummondii</i>	P4	Regan's Ford, (Gingin), Kalgan River, Manypeaks, Pinjarra		Avon-Mortlock	2435
76	<i>Schoenus natans</i>	P4	Pinjarra, (Cannington), Lake Muckenburra, Gingin, Busselton, Beaufort River, West Dale, Lake Muir	Aug-Nov	Avon-Mortlock	1003
77	<i>Sowerbaea multicaulis</i>	P4	Bullfinch, Karroun Hill, Lake Deborah (Bremer Range - Lake Hope, Lake Cronin)	Nov	Yilgarn	1313
78	<i>Stachystemon axillaris</i>	P4	Wanneroo, Mogumber, Mt Lesueur, Eneabba, Arrowsmith River	Jul-Sep	Avon-Mortlock	4713
79	<i>Stylidium diuroides</i> subsp. <i>paucifoliatum</i>	P4	Strawberry, Mt Lesueur, Burma Road, Watheroo, Tathra	Sep	Avon-Mortlock	12848
80	<i>Stylidium scabridum</i>	P4	Wyening-Narembreen, York, New Norcia	Sep-Oct	Avon-Mortlock/Yilgarn	7795
81	<i>Stylidium tenuicarpum</i>	P4	S of York	Sep-Nov	Avon-Mortlock	
82	<i>Synaphea grandis</i>	P4	New Norcia	Oct-Nov	Avon-Mortlock	
83	<i>Thelymitra apiculata</i>	P4	Mogumber	May-Jul	Avon-Mortlock	
84	<i>Verreauxia verreauxii</i>	P4	Dale, Dobaderry, Dowerin	Dec-Jan	Avon-Mortlock	7667
85	<i>Verticordia lindleyi</i> subsp. <i>lindleyi</i>	P4	Mogumber	Nov-Jan	Avon-Mortlock	

86	Verticordia paludosa	P4	Mogumber	Jan-May	Avon-Mortlock	
87	Wurmbea murchisoniana	P4	Murchison R., Jingemarra, Wanarra Rk, 71 Mile Rk, Coonmine Well, Balladonia	Jul-Sep	Yilgarn	1399
<b>TOTAL P4 = 87</b>						