

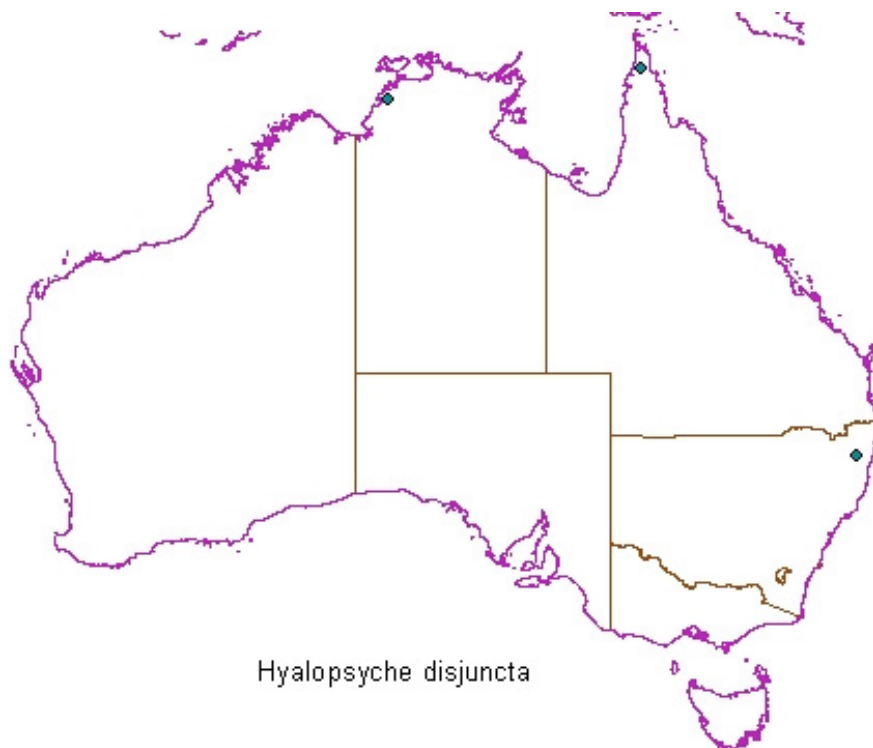


FAMILY DIPSEUDOPSIDAE

Habitat profile for *Hyalopsyche disjuncta* Neboiss

Hyalopsyche disjuncta Neboiss was recorded from only 4 Northern Territory, north Queensland and New South Wales localities in this study. This species was previously recorded as both adults and larvae from north-eastern Queensland (Wells and Cartwright 1993) and as larvae from one site in north-eastern New South Wales and several sites in the Northern Territory (Cartwright 1998).

There is limited corresponding physico-chemical data with some of these records. In this study, *H. disjuncta* was recorded in edge and pool rocks habitat samples from streams at 200 m altitude, 39 km from the source, with moderate conductivity of 128-185 μ S/cm, relatively warm recorded water temperatures of 23.9-28.1°C, near neutral pH in the range 7.1-7.2, and very low turbidity (2 NTU).

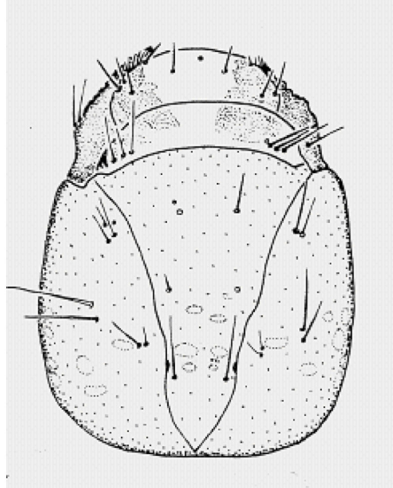


Hyalopsyche disjuncta

Distribution of *Hyalopsyche disjuncta* in Australia.



Hyalopsyche dijuncta, dorsal view of head



References

Cartwright DI (1998) 'Preliminary guide to the identification of late instar larvae of Australian Polycentropdidae, Glossosomatidae, Dipseudopsidae and Psychomyiidae (Insecta: Trichoptera).' (Cooperative Research Centre for Freshwater Ecology: Albury)

Wells A, Cartwright DI (1993) Females and immatures of the Australian caddisfly *Hyalopsyche disjuncta* Neboiss (Trichoptera), and a new family placement. *Transactions of the Royal Society of South Australia* **117**, 97-104.