

Water quality: Seawater temperature

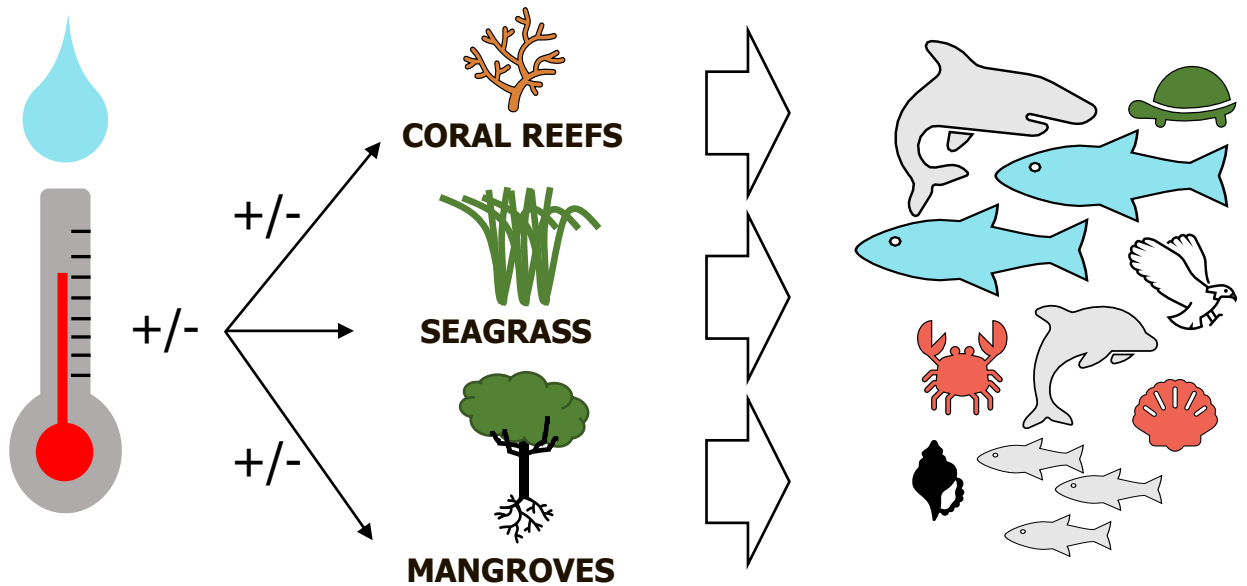
- Monitoring in Lalang-garram marine parks -

We acknowledge the Traditional Owners of the sea country on which this work was done, the Dambimangari people and pay our respects to Elders past and present.

WHY

Temperature is a health indicator of water quality. It influences where plants and animals are found. Unusual changes in temperature can cause animals to move, change behaviour and in extreme cases, die-off. Monitoring temperature will help us understand the pressures on plants and animals important to healthy country.

Temperature is important for healthy country, influencing a wide range of plants and animals



HOW

We deploy temperature loggers on a mooring in the ocean at important sites to collect data. These loggers stay out for up to two years, recording temperature every 30 minutes.

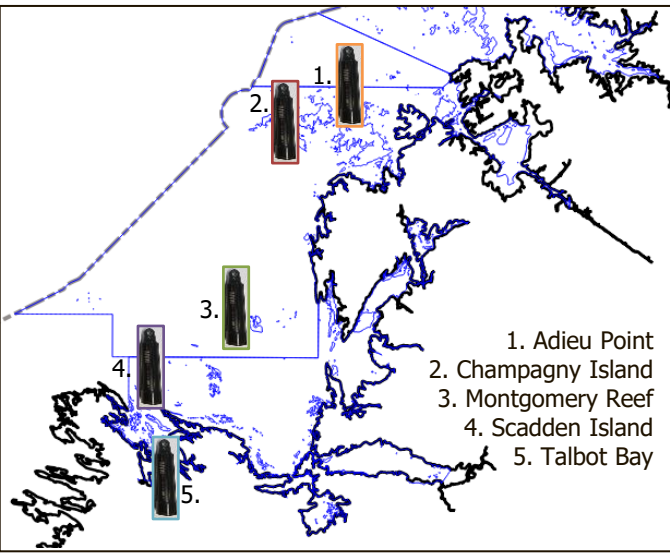


Water quality: Seawater temperature

- Monitoring in Lalang-garram marine parks -

WHAT WE KNOW

5 LOGGER SITES

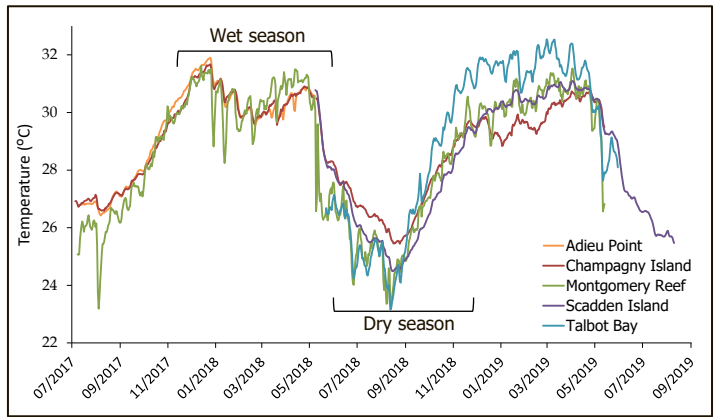


RANGE

Temperatures range from 23.1 – 32.5°C

PATTERNS

There are small differences between sites, but overall patterns are the same.

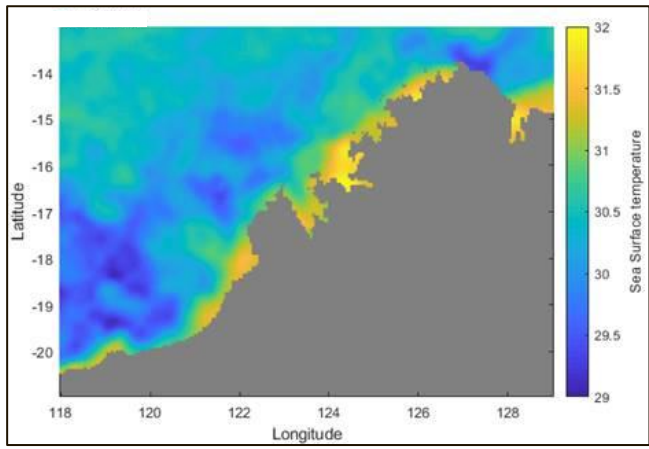


MODELLING THE DATA

By combining satellite and logger data we can calculate what ocean temperatures were back to 1986. This lets us explain long term changes, and helps predict future events on country.

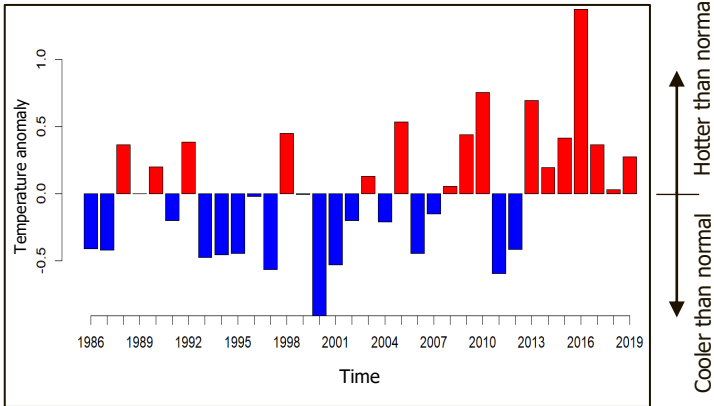
Kimberley water temperatures

February 2016



YOWJAB

Montgomery Reef (as an example)



For more information on this work contact Ellen D'Cruz, ellen.dacruz@dbca.wa.gov.au



Department of Biodiversity, Conservation and Attractions



Biodiversity and Conservation Science

