



An Introduction to on-farm Revegetation

Peter White

Dept of Environment and Conservation

Wheatbelt Region



Does your revegetation look like this?





Or this?

Or like this?





Introduction

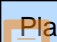
- Getting started
- Seed and seedlings
- Site preparation and establishment techniques
- Commonly encountered problems
- More information
- Summary

Selecting suitable options

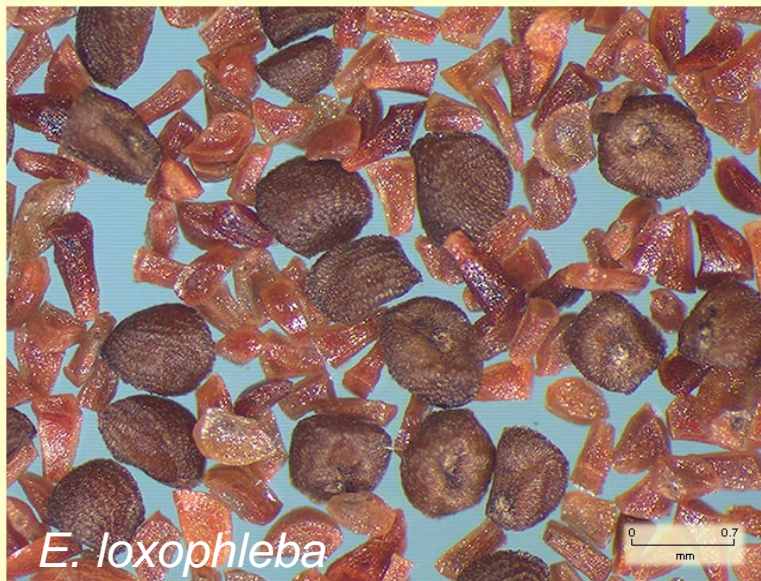
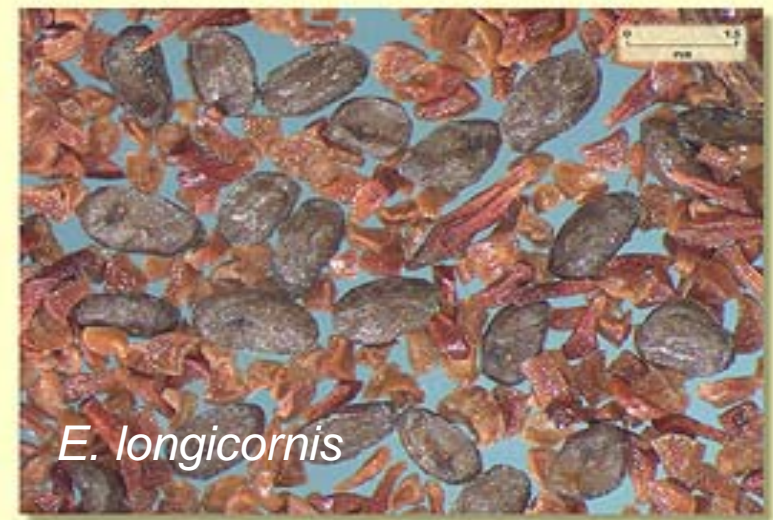
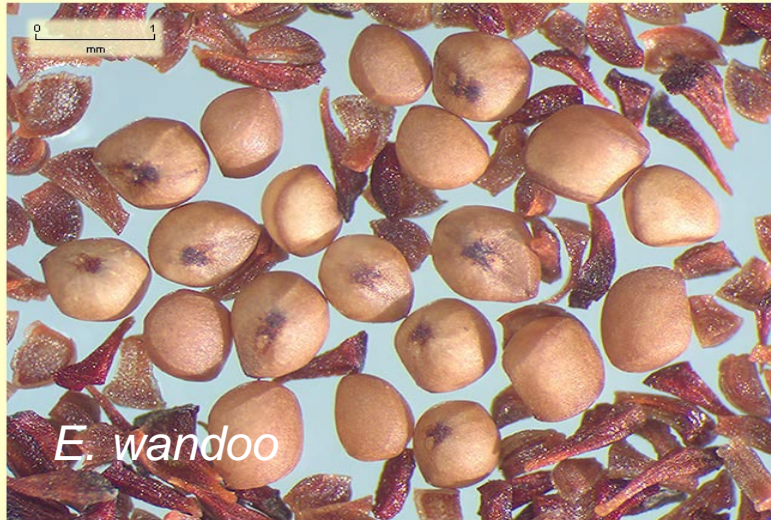
Define your
requirements

Site factors

Species selection: knowledge
and understanding

 Planning for 2008	Sept 08	Oct 08	Nov 08	Dec 08	Jan 09	Feb 09	Mar 09	Ap 09	May 09	Ju 09	Jul 09	Aug 09	Sept 09
Site selection and inspection	Inspect sites while winter growth is still a good indicator of site conditions		Revegetation timeline										
Finalise 2008 seedling orders		Finalise orders											
Seed collection		Collect and clean seed		[1]									
Rabbit control				Bait trails, warren fumigation									
Planning			Mark out sites, plan fencing program, plan ripping										
Ripping & Mounding							Site preparation works, complete ripping and mound if necessary						
Weed control					Control summer weeds if necessary						Pre planting control of winter weeds according to prescription		Post planting control if requ'd
Hand planting										Sandy or gravelly upper slope areas first (June), mid slope. [3] then heavy soil, lower slope areas			
Machine planting										Sandy or gravelly upper slope areas first (June), mid slope. [4] then heavy soil, lower slope areas			
Fencing							Commence fencing, erect strainers						Finish fencing after planting
Insect control	[1] Note that the seed collection indicated for this period is for a nursery program in 18 months time [3] Planting times may vary according to rainfall, planting times will also be slightly later than the herbicide application [4] Planting times may vary according to rainfall, planting times will also be slightly later than the herbicide application	Check for insect pest damage.											

Seed – the key to success



Seed: where it all starts

***“In a forest plantation, a
genetically poor tree
will continue to
produce below the
potential of the land
and climate resource
for as long as it
occupies the site..***



Nursery seedling quality



Do your seedlings
look like this?



. or would you
prefer this?

....or this?

Vermin control



Weed control



It's not what equipment you have, it's if you use it

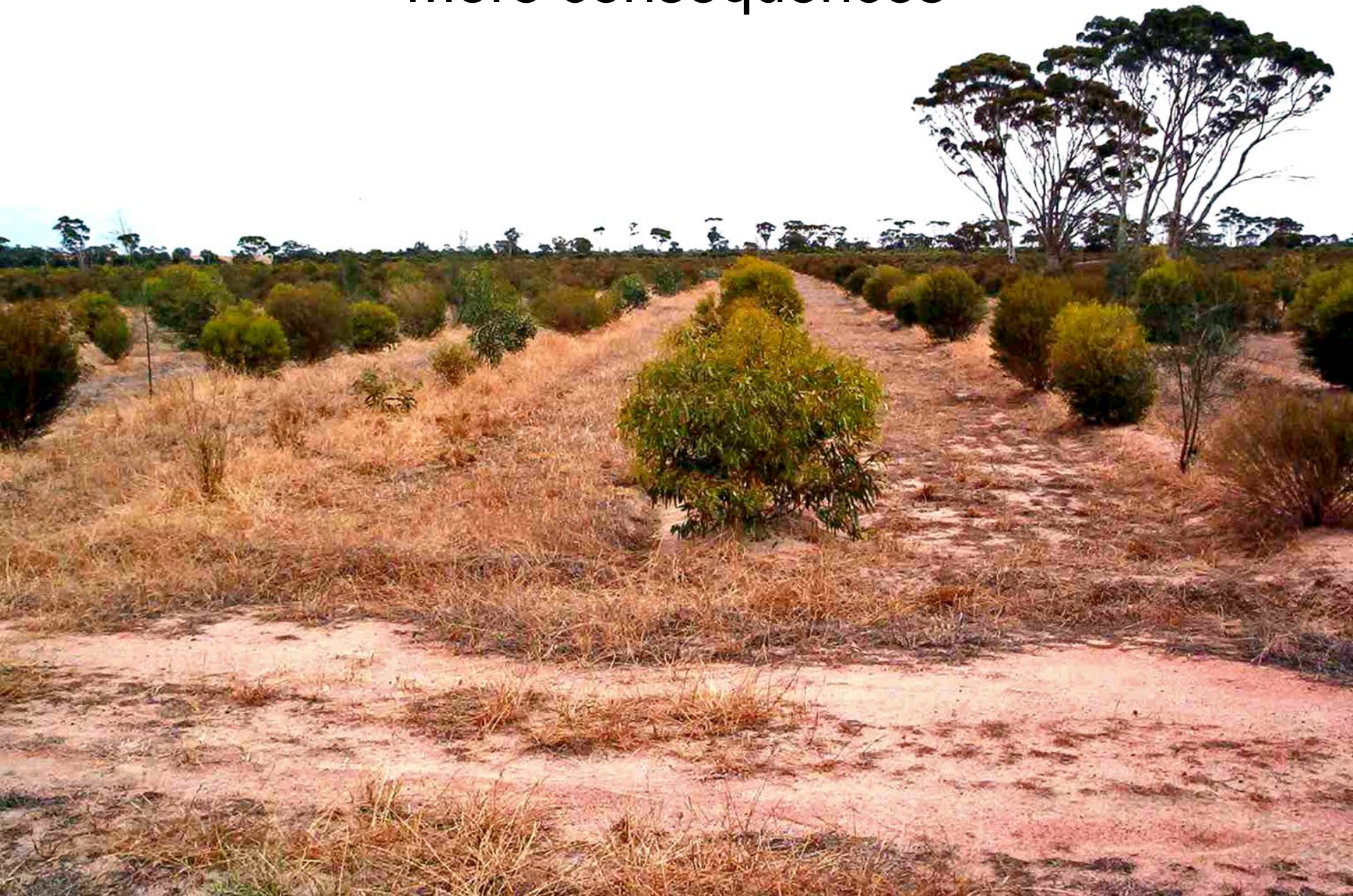


Consequences of poor weed control





More consequences



.....and more still

E. globulus





Establishment

- ❑ Ripping with proper equipment
- ❑ Good initial weed control
- ❑ Mounding if necessary
- ❑ Planting at the appropriate time
- ❑ Planting to an appropriate quality
- ❑ Post planting weed and pest control



Planting options

Machine planting



Hand planting



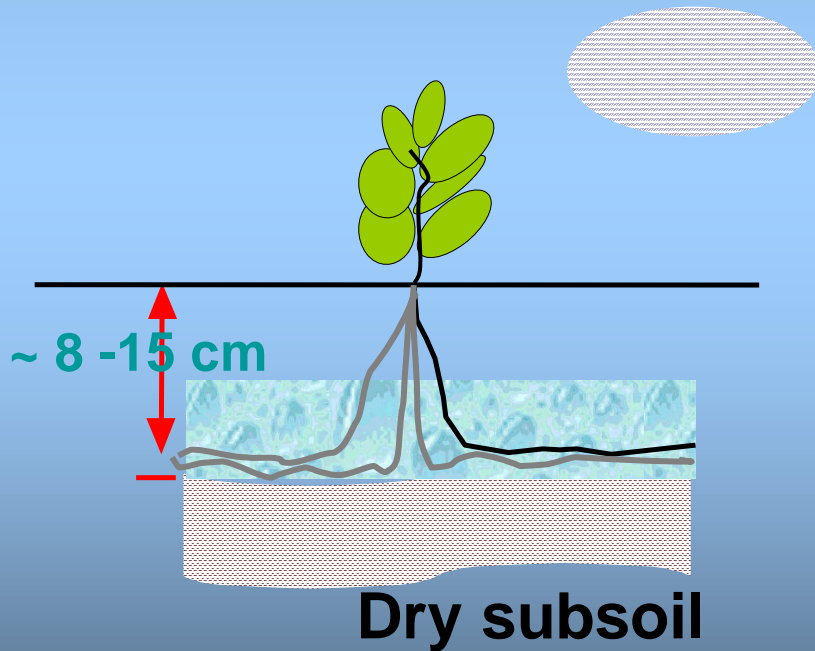
Direct seeding



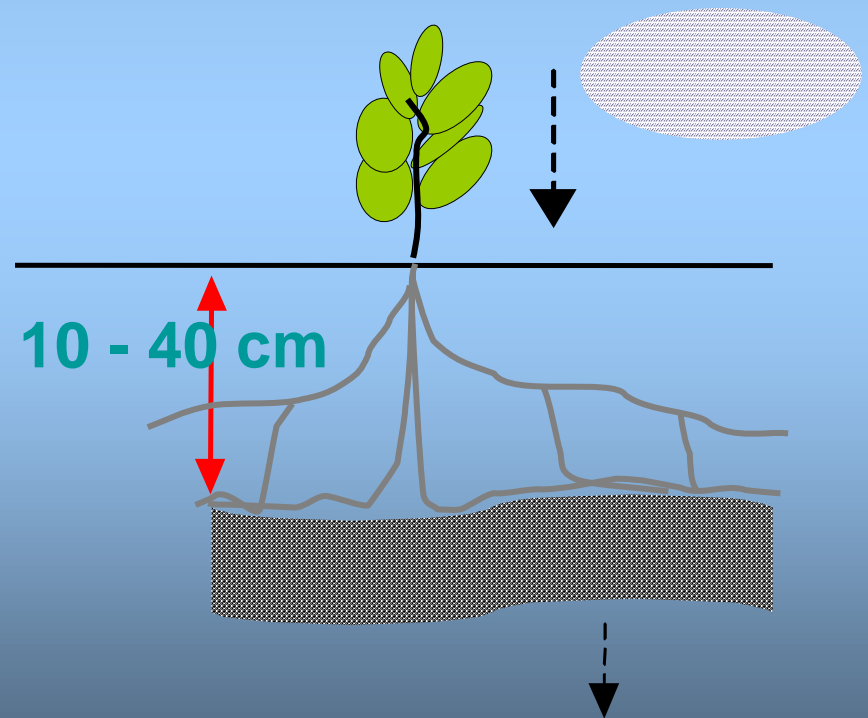


Site preparation techniques: ripping

Cultivation
hardpan (fine
textured - clay soils)



Traffic hardpan
(loams and sands)





Ripping options and problems





Other ripping machinery





Mounds and machinery



Moundploughing: Why is it used in revegetation?

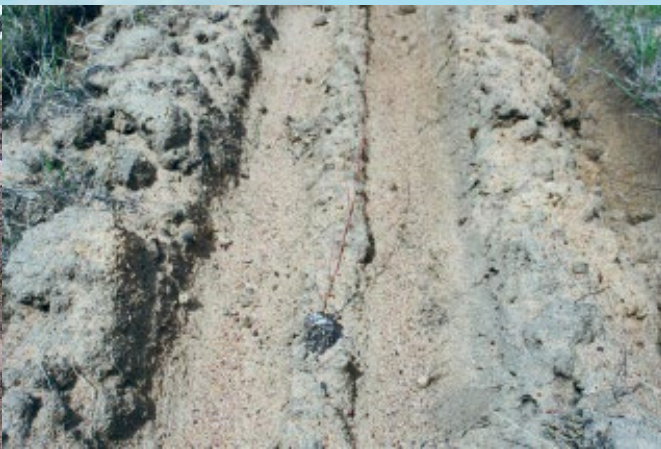


- Cultivation effect (including reducing bulk density)
- Concentration of topsoil; increasing the availability of nutrients.
- Raises soil and allows construction of a flat smooth surface.
- Safer herbicide use (seedlings and environment).
- Waterlogging management.
- Harvests water when on the contour.
- Increases the similarity of the site

Post planting

- Fences - stock protection
 - vehicle movement
- Weeds and fire
- Insects





Q. What's been
killing your trees?



A. The usual
suspects



Aug 2002



Successful
revegetation
works

June 2006



Dec 2004

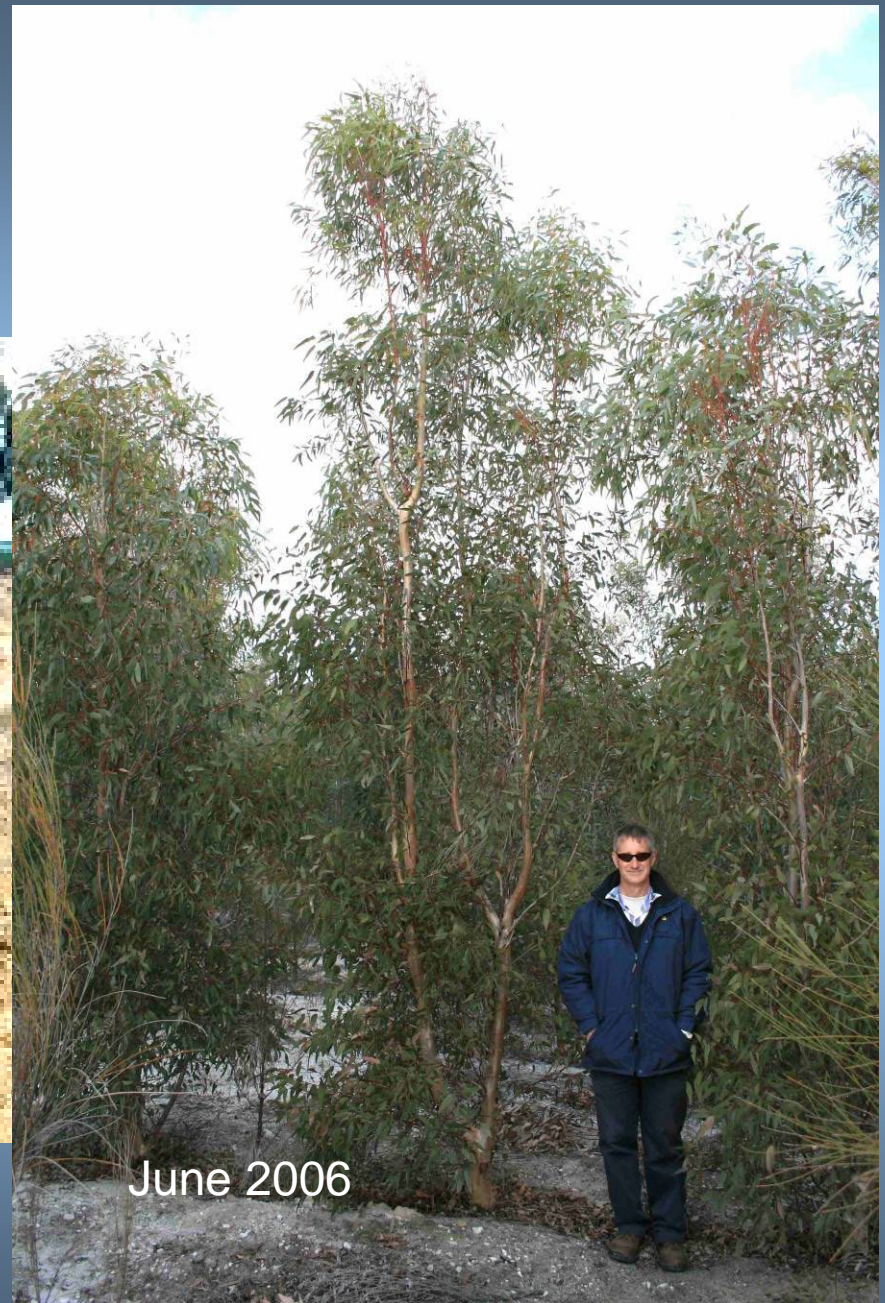


Angwins
breakaway 1

Angwins breakaway 2



Dec 2002



June 2006

P: 18th Aug 2000



**Hughes oil
mallees**

**28 months
3.9m**



17th Dec 2002

Quenchinup sheoak



Feb 2008

Feb 2005

Summary – or a shortcut to successful tree planting

- Information on revegetation works is readily available
- Planning / site selection / species choice
- Vermin and weed control
- Seed and seedling quality
- Site preparation and planting
- Fencing
- Post planting weed and pest control

Thank you



Department of
**Environment and
Conservation**



Our environment, our future





We are serious about conserving the plants and animals in the landscape, and we need your help



Land for Wildlife provides individuals with advice
on managing their bushland



Integration



Management



Revegetation



Incentives