

Land For Wildlife



Land for Wildlife

A biodiversity extension service to private landholders who want to manage their land 'with wildlife in mind'.



History

- *Land for Wildlife (LFW)* was officially launched in WA in 1997 and is hosted by the Department of Conservation and Land Management.
- Funded by “The Salinity Action Plan”.
- 2007 is LFWs 10th anniversary year.



Land for Wildlife, at a glance:

- **Free** – the scheme recognises the significant contribution made by landholders.
- **Voluntary** – landholders make a personal commitment to the scheme. They may withdraw at any time, if they wish.
- **No legal binds** – *LFW* membership does not alter the legal status of your property in any way.
- **Inclusive** – farms, bush blocks, Shire reserves, school grounds or golf courses may be eligible.

What are the benefits of joining *Land for Wildlife*?



- A visit from a *LFW* Officer to receive advice on...
- ✓ how to integrate wildlife habitat with other uses of private land through farm and catchment planning
- ✓ how to manage remnant bushland and the fauna occurring in the area
- ✓ the ecological role and requirements of native flora and fauna
- ✓ how to include wildlife aspects into revegetation schemes and landcare
- ✓ information about other forms of assistance and incentives that are available
- ✓ property assessment report which contains advice on managing remnant vegetation, e.g. species identification, weed control, fire management, creation of wildlife habitat and wildlife corridors

- Stewardship visit to monitor progress and upgrade from interim to full registration
- Receive information via –
 - ✓ Field days and workshops for the public
 - ✓ Quarterly Newsletter *Western Wildlife*
 - ✓ Wildlife Notes
 - ✓ “How to...” books
 - ✓ Networking

Land for Wildlife Team

PENNY HUSSEY
Senior Project Officer

Kensington



CLAIRE HALL
Technical Officer

Kensington

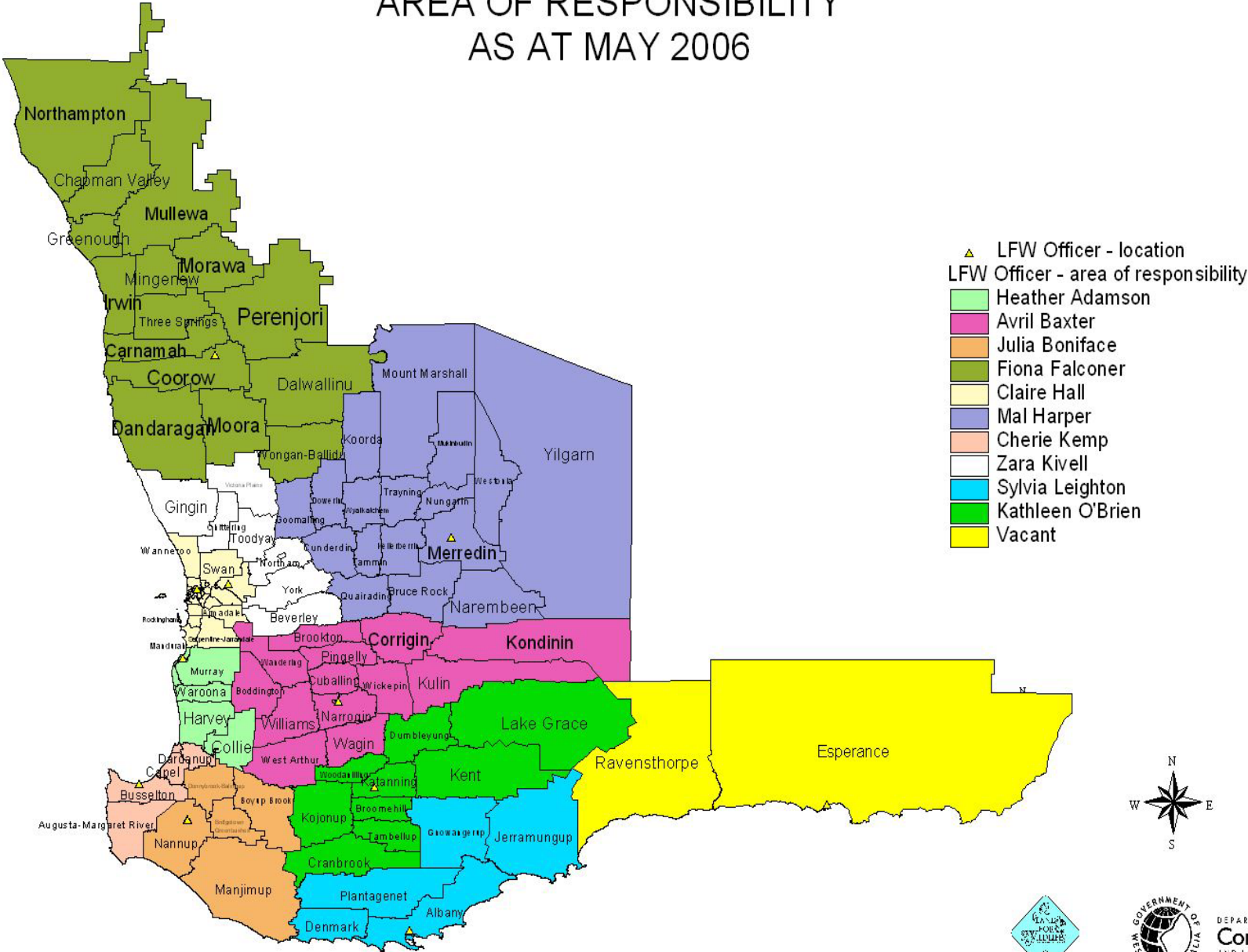


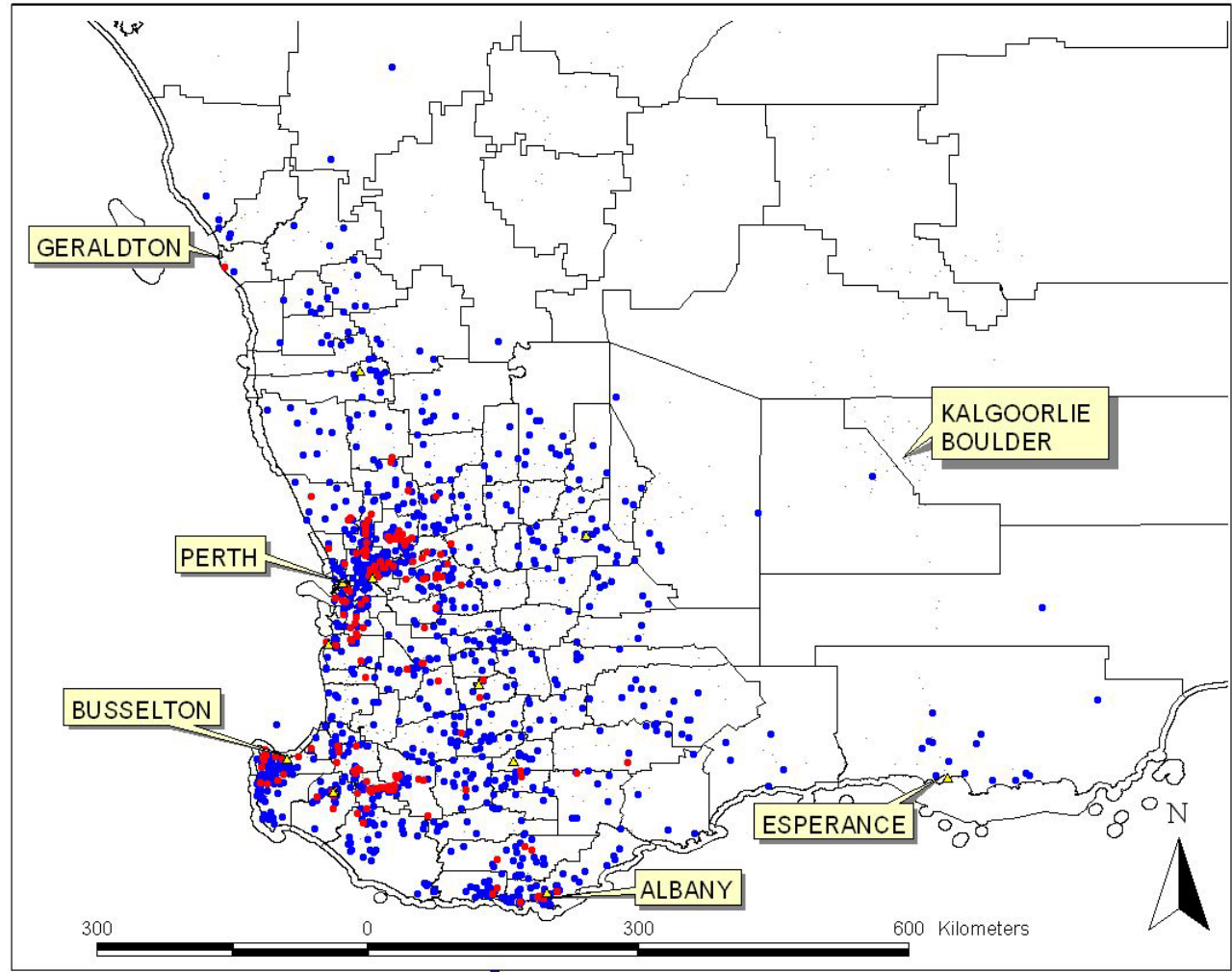
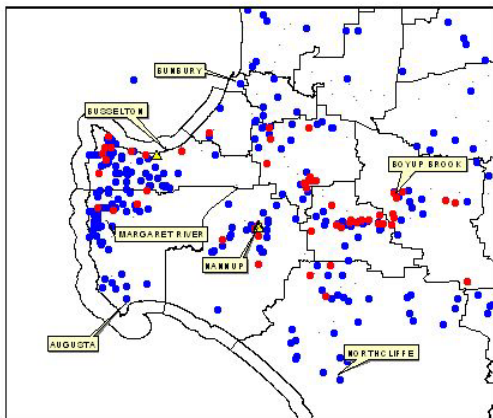
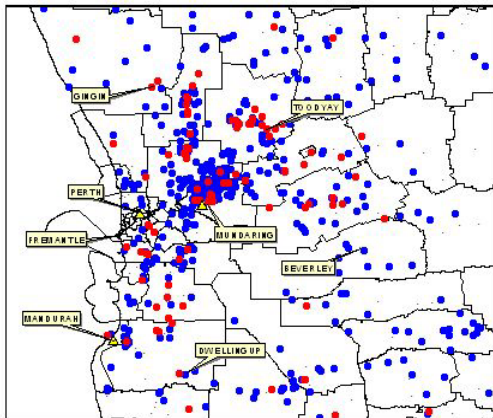
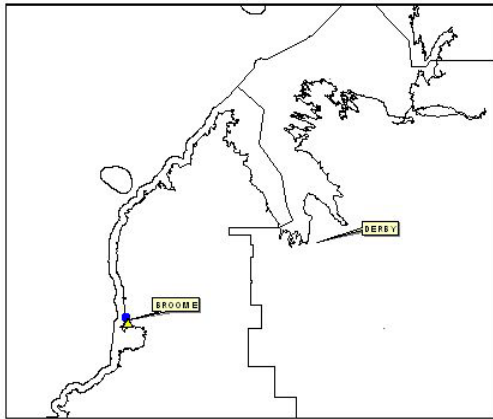
HEATHER ADAMSON
Land for Wildlife Officer

Mandurah



LAND FOR WILDLIFE OFFICERS AREA OF RESPONSIBILITY AS AT MAY 2006





Land for Wildlife Sites in Western Australia

As at May 2006

- ▲ LFW Officer - location
- Land for Wildlife sites
 - full
 - interim
- Local Government Authority
- Town



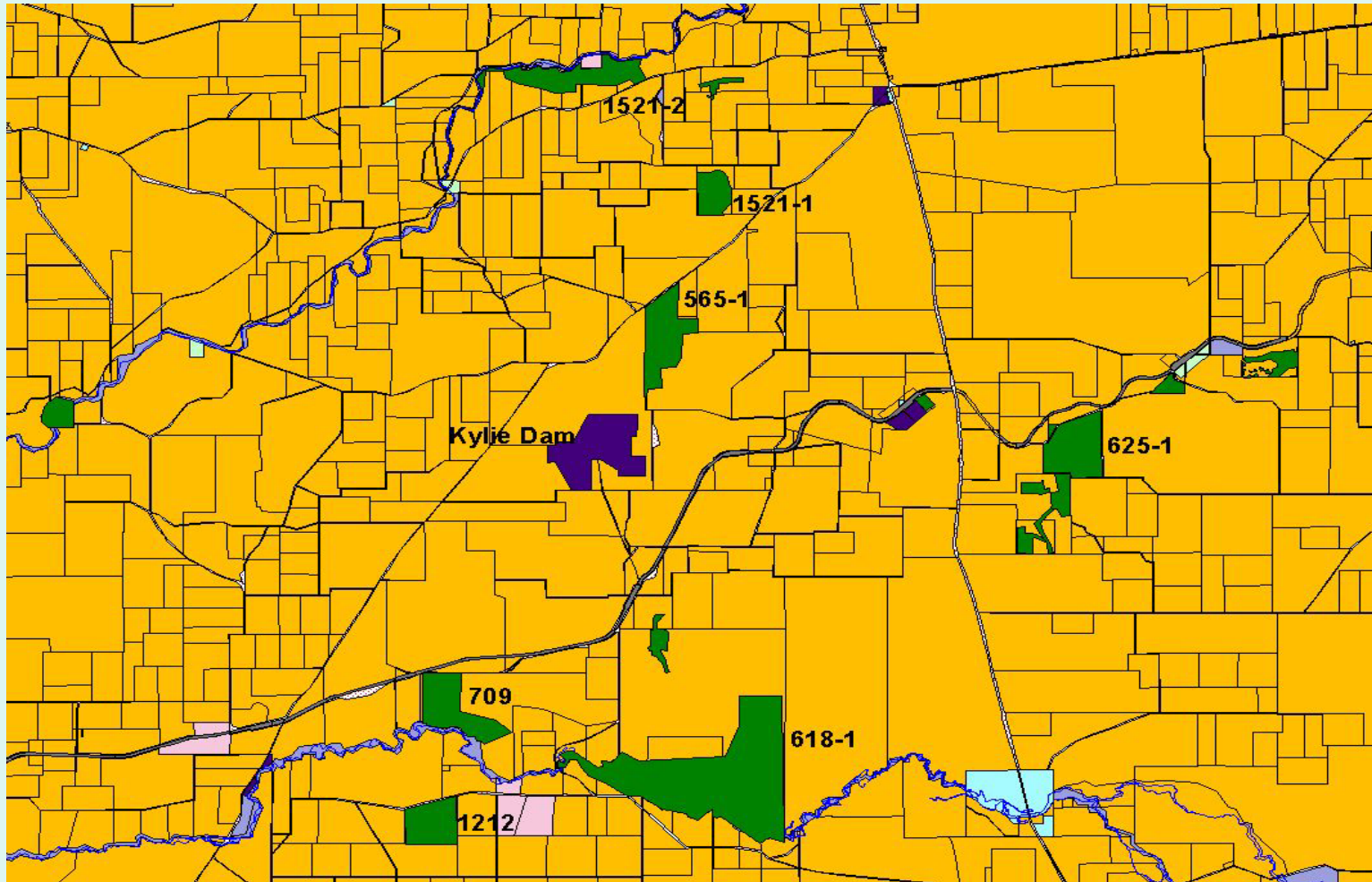
Land for Wildlife status
as at 2nd May 2006
Current Registrations

Registration type	Number of registrations	Area of whole property (ha)	Area of remnant vegetation (ha)	Area of Land for Wildlife sites (ha)
Full registration	1183	1,034,234	417,338	241,867
Interim registration	172	13,671	1,396	1,566
Not assessed yet	174	Not known	Not known	Not known
TOTAL	1529	1,047,905	418,734	243,433

Benefits of wildlife habitat on private land

- Contribute to the long-term survival of native plants and animals
- Play a major role in sustainable agriculture, e.g. controlling wind and water erosion, provision of shade and shelter, management of salinity, and natural pest control
- Provide stepping stones or corridors to link the landscape into a network that allows wildlife movement between bushland remnants and conservation reserves.

Collection of data is not only useful to the landholder but can also help in landscape planning. For example.... Map of Kylie Dam Reserve and *LFW* sites within 10 km.



Type of information recorded for each site:

- *LFW* registration number
- Area (ha)
- Fencing
- Landscape
- Soil
- Vegetation complex
- Presence of weeds

The information can be used for targeting landowners for funding or other assistance.



LAND
FOR
WILDLIFE

