



# Don't Rubbish Our Hills



AND LAND MANAGEMENT  
**Conservation**  
DEPARTMENT OF









## ***Need for co-ordination and planning***

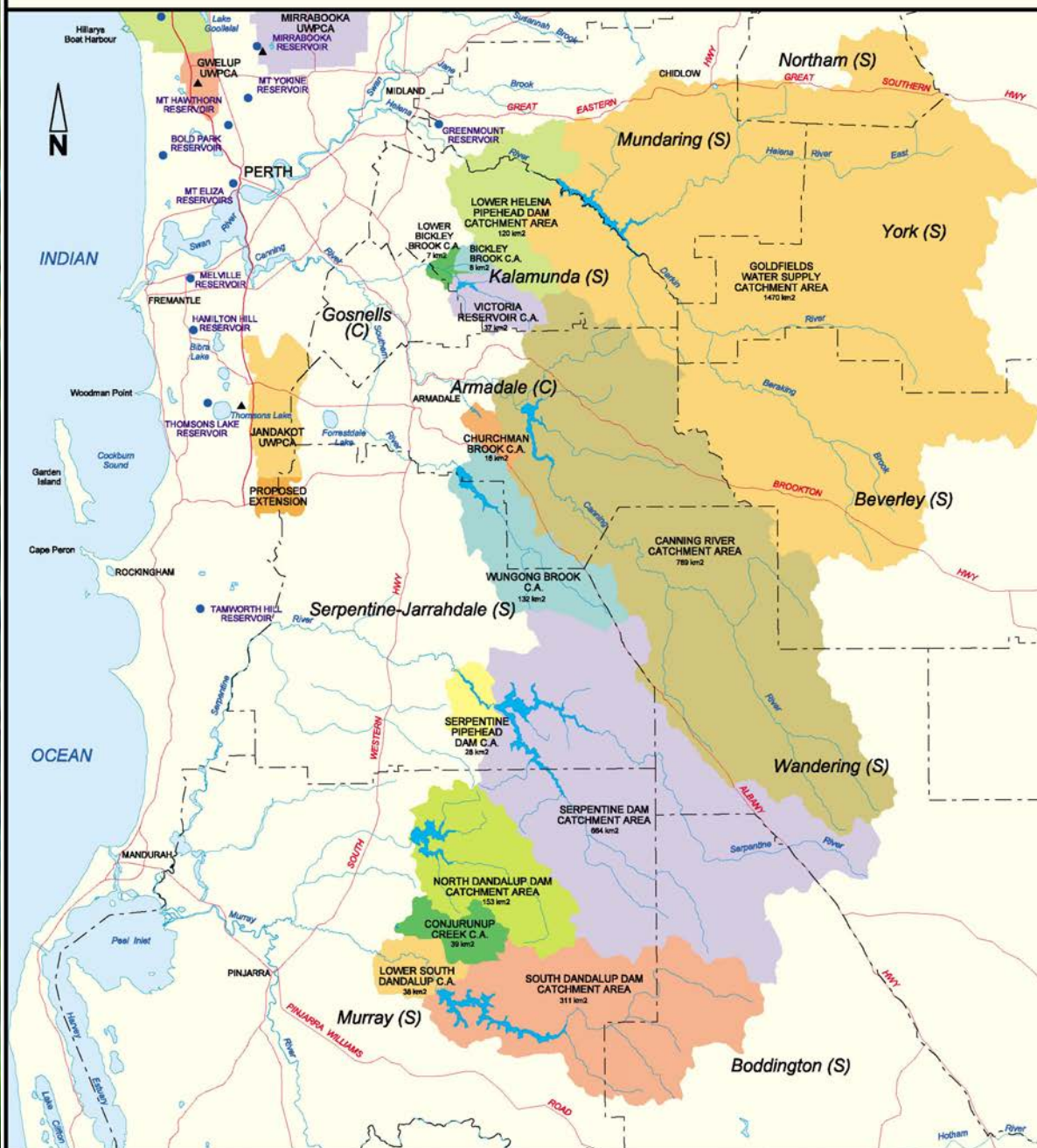
- Problem awareness.
- Commitment to support.
- Co-ordinated approach.



## ***Local authority attendees***

- Shire of Kalamunda.
- Shire of Mundaring.
- City of Gosnells.
- Shire of Serpentine/Jarrahdale.

# MAJOR CATCHMENTS AND SHIRES



- Service Reservoir
- ▲ Groundwater Treatment Plant

- Major Road
- Shire boundary

0 Scale 25  
kilometres

**AAM SURVEYS**

Prepared for the  
Water Corporation  
of Western Australia  
by AAM Surveys Pty Limited  
Ref. 325116 October 2000



## *Aim*

- Reduce rubbish dumping to protect:
  - Water quality;
  - recreation;
  - health;
  - environment; and
  - cut costs.



## *Two objectives*

- Ensure illegal rubbish significantly reduced.
- Develop community consciousness about impacts of dumping.

# MAJOR CATCHMENTS



- Service Reservoir
- ▲ Groundwater Treatment Plant

Major Road

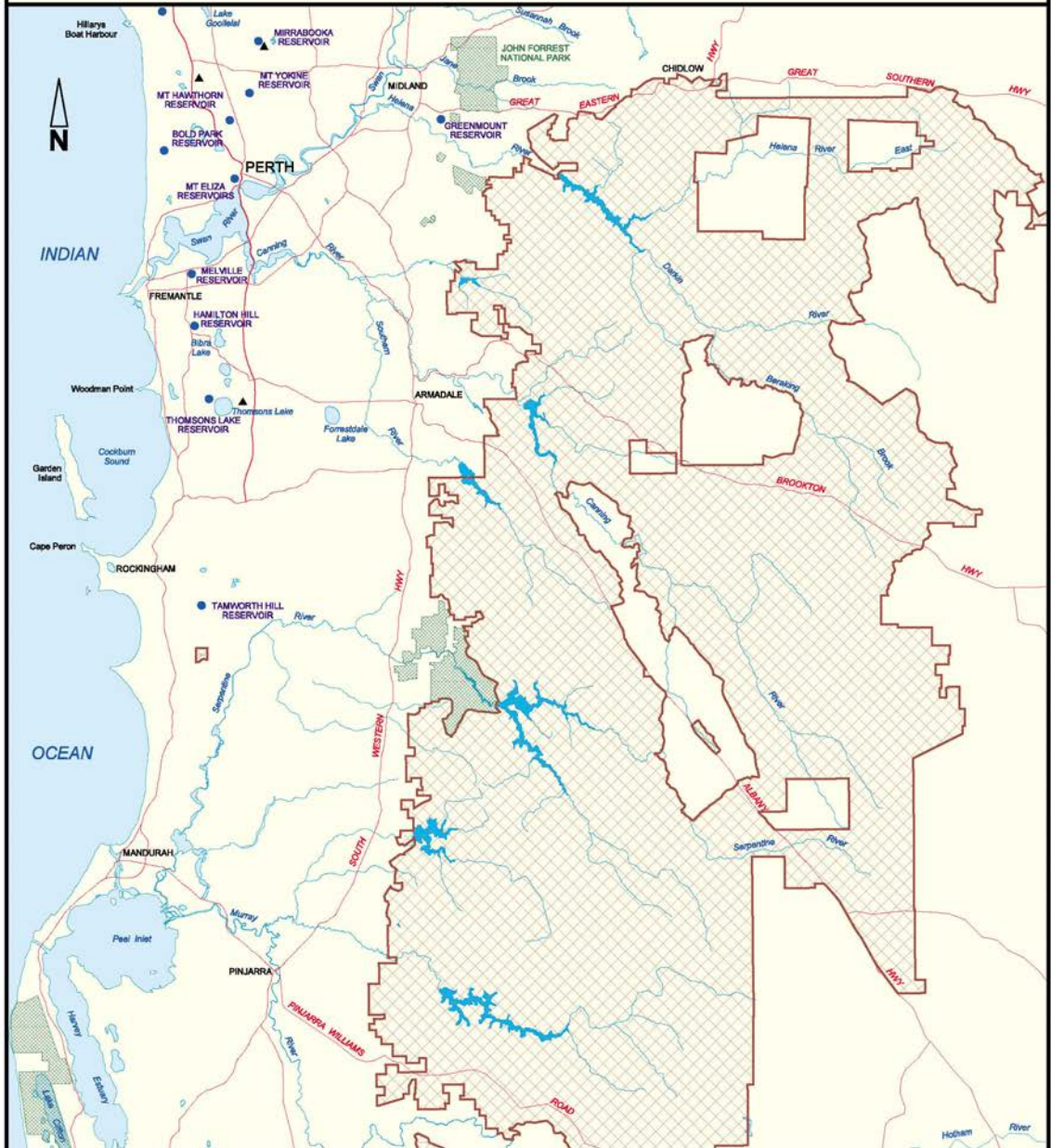
Scale  
0 25  
kilometres

**AAM SURVEYS**

Prepared for the  
Water Corporation  
of Western Australia  
by AAM Surveys Pty Limited  
Ref. 325116 October 2000



# STATE FOREST



- Service Reservoir
- ▲ Groundwater Treatment Plant

- Major Road
- ▨ Forest
- ▤ National Park

0 Scale 25  
kilometres

**AAM SURVEYS**

Prepared for the  
Water Corporation  
of Western Australia  
by AAM Surveys Pty Limited  
Ref. 325116 October 2000



# MAJOR CATCHMENTS AND STATE FOREST



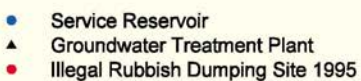
- Service Reservoir
- ▲ Groundwater Treatment Plant

- Major Road
- Forest
- National Park

0 Scale 25  
kilometres

**AAM SURVEYS**

Prepared for the  
Water Corporation  
of Western Australia  
by AAM Surveys Pty Limited  
Ref. 325116 October 2000



— Major Road  
— - — Shire boundary

0 **Scale** 25  
kilometres

Prepared for the  
Water Corporation  
of Western Australia  
by AAM Surveys Pty Limited  
Ref. 325116 October 2000

# ILLEGAL RUBBISH DUMPING 1995



- Service Reservoir
- ▲ Groundwater Treatment Plant
- Illegal Rubbish Dumping Site 1995

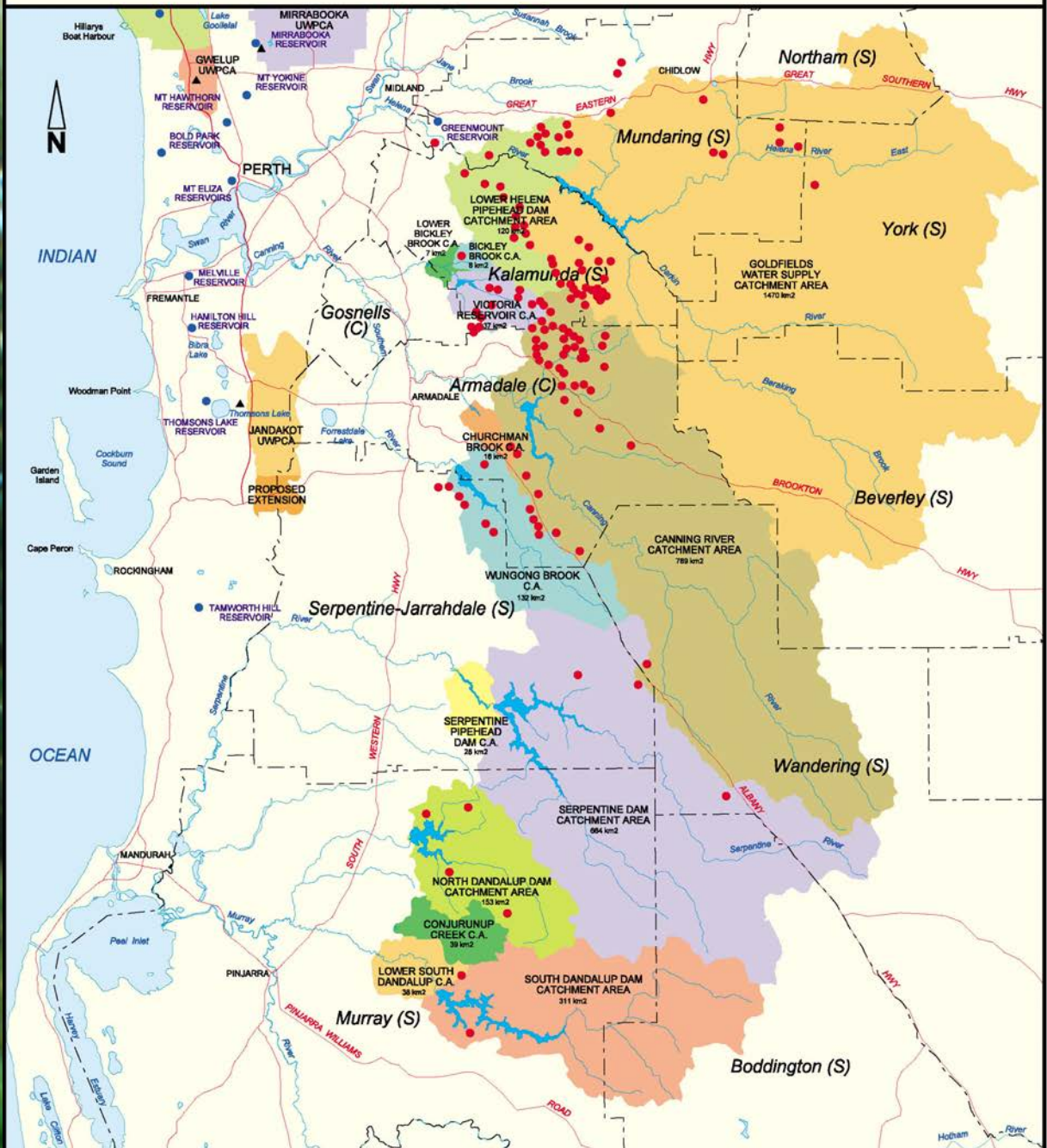
- Major Road
- Forest
- National Park

0 Scale 25  
kilometres

**AAM SURVEYS**

Prepared for the  
Water Corporation  
of Western Australia  
by AAM Surveys Pty Limited  
Ref. 325116 October 2000

# ILLEGAL RUBBISH DUMPING 2000



- Service Reservoir
- ▲ Groundwater Treatment Plant
- Illegal Rubbish Dumping Site 2000

- Major Road
- - - Shire boundary

0      Scale      25  
 kilometres

**AAM SURVEYS**

Prepared for the  
 Water Corporation  
 of Western Australia  
 by AAM Surveys Pty Limited  
 Ref. 325116    October 2000

## ILLEGAL RUBBISH DUMPING 2000



- Service Reservoir
- ▲ Groundwater Treatment Plant
- Illegal Rubbish Dumping Site 2000

-  Major Road  
 Forest  
 National Park

0 **Scale** 25  
kilometres

**מה SURVEYS**

Prepared for the  
Water Corporation  
of Western Australia  
by AAM Surveys Pty Limited  
Ref. 325116 October 2000









## ***Dumping estimates***

- Up to 250 tonnes illegally dumped annually.
- Four-fold increase in clean-up cost for CALM.
- 200% cost increase for City of Gosnells.
- Mundaring: \$15,000 per year and rising.
- The Water Corporation's costs are increasing every year.



## ***Shire of Serpentine-Jarrahdale stats***

- Serpentine-Jarrahdale: 53 car bodies last year.
- More than 300 car bodies east of Byford.
- Annual dumping increase 20%.



## ***Catchment pollution***

- Pollution of catchments a priority problem.
- Threat of pathogens, hydrocarbons, chemicals.
- Water contamination possible – longer term.



## *Other problems*

- Public health threatened.
- Serious fire risk.
- Risk for firefighters.
- Threats to flora and fauna.
- Visual pollution.



## ***Causes of dumping***

- Tip closures.
- Raising of charges.
- Longer distances to travel.
- Hazardous materials regulations.



The background of the slide is a photograph of a forest path. The path is covered in green grass and leads into a dense forest of tall, thin trees. The lighting is bright, suggesting a sunny day. A solid red rectangular bar is positioned at the top of the slide, containing the title text.

## ***Penalties***

- Penalties not a deterrent.
- Confusion about penalties.
- On-spot fines up to \$200.



## *Other causes*

- High cost to remove car bodies.
- Surveillance difficult.
- Low rate of apprehension.

A background image of a forest with tall trees and green foliage, partially obscured by a white mist or smoke effect on the right side.

## ***Strategies***

- Stiffer penalties.
- Greater surveillance.
- More signs.
- Restricted access.



## *Other strategies*

- Alternative dumping sites.
- Commercial kerbside collections.
- Alternative drag racing sites.
- Raise public awareness.

The background of the slide is a photograph of a forest path, with tall trees and green foliage. A semi-transparent red bar is positioned at the top left, containing the title. The text 'Next steps' is written in a white, italicized serif font.

## *Next steps*

- Consolidate working group.
- Finalise strategies.
- Launch awareness campaign.
- Involve other stakeholders.



## ***Likely stakeholders***

- Water and Rivers Commission.
- EPA.
- DEP.
- Community organisations.
- Keep Australia Beautiful Council.



**Your input is  
needed now if  
we are to  
reclaim our  
bush.**