



## The Bush Garden

### Perth Plants for your Bush Gardens

"The rules for future gardening start with the very fundamentals; take your lead from the climate and soil. To fight is to fight nature." Hugh Johnson, *"Gardening Companion: The principles and practice of the gardener's art"*, Mitchell Beazley, London, 1996.

The garden can be a place of contemplation and delight, a place to share good times with friends and family or a place to retire from the rush of modern life. Gertrude Jekyll, designer of many famous gardens, stated that: "the first purpose of a garden was to give happiness and repose of mind". Gardening in Perth however can resemble a battle against the harsh climate and dry, barren soils.

One solution is to use Perth plants. Perth plants are adapted to our climate, soil and scarce water. Other benefits follow: Our gardens become living components of the environment, providing habitat for native birds, animals and insects. Our heritage of unique plants is conserved and our gardens reflect a truly Perth character. The personal and environmental cost of maintaining our gardens is diminished because we need less water, fewer pesticides and fewer fertilisers.

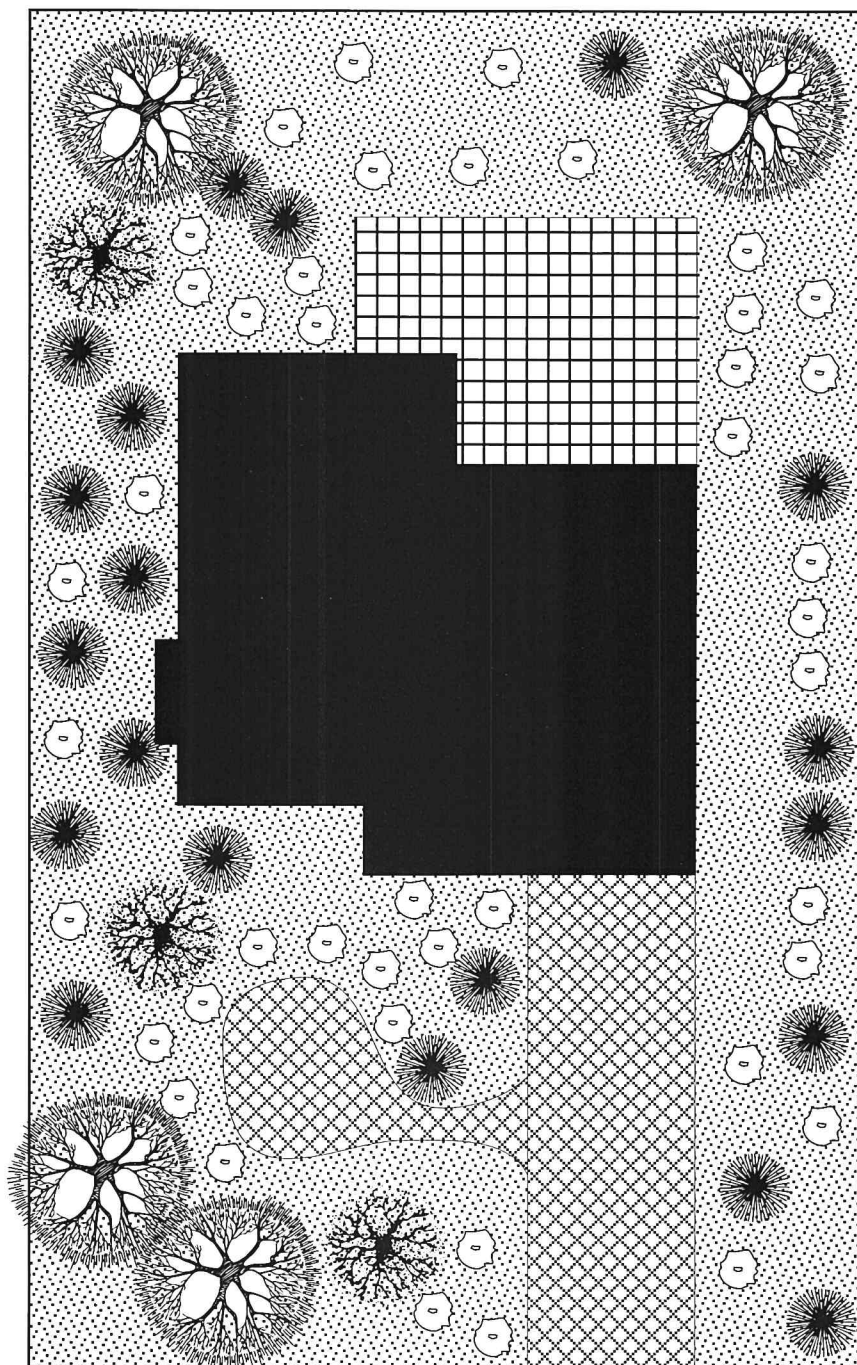
A well designed bush garden is one of the loveliest and yet most practical of all garden styles. The conceptual plan and species selection will provide you with some fresh ideas on how to achieve a thriving and beautiful bush garden using Perth plants.

### The Bush Garden

The bush garden is a modern and naturalistic style with an ancient and honourable history. Developed first in the gardens of China, and later Japan at around the same time as the Romans were building their first gardens, the natural garden was a celebration of the beauty of nature. In time the West absorbed the lessons of the gardens of the east but redefined and blended them into a European version. Other European traditions, including the formal and the cottage style, were incorporated. The most eloquent versions of the style in Europe are the gardens of the great country estates and manor houses. The modern interpretation of the natural garden incorporates much of our contemporary thinking about both the environment and what it is that makes a garden satisfying.

The natural garden is the style most readily associated with the use of native plants, for obvious reasons. It is unfortunate that a natural bush garden is just as likely to fail as one using exotic species if the plants used are ill adapted to our local soils and climate. Many native plants sold in nurseries are eastern states varieties which have quite different requirements to Perth plants. On the other hand a well thoughtout bush garden, using Perth Plants, is truly delightful. Such a garden is in harmony with the environment and requires little attention from year to year other than a little pruning and weeding. A natural garden is one where leaf litter is a bonus, fallen trunks blend rather than offend and nature is allowed to take its course. Overleaf you will discover how to successfully interpret this low maintenance style using plants guaranteed to thrive and give pleasure for many years.





Produced with assistance from **Apace WA**

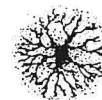
## Bush Garden Conceptual Plan and Species List

If you require more information about the plants on this page refer to the booklet, *Perth Plants for your Garden* which is available at your local nursery.



### Tall Trees

**Tuart 30-40m** (*Eucalyptus gomphocephala*)  
**Jarraah 15-40m** (*Eucalyptus marginata*)  
**Marri 30-40m** (*Eucalyptus calophylla*)



### Medium Trees

**Prickly Bark 9-16m** (*Eucalyptus tottiana*)  
**Sheoak 15m** (*Allocasuarina fraseriana*)  
**Firewood Banksia 10m** (*Banksia menziesii*)  
**Candle Banksia 10m** (*Banksia attenuata*)  
**WA Peppermint 15m** (*Agonis flexuosa*)



### Shrubs

**Spearwood** (*Kunzea ericifolia*)  
**Coast Wattle** (*Acacia cyclops*)  
**Coastal Honeymyrtle** (*Melaleuca acerosa*)  
**Graceful Honeymyrtle** (*Melaleuca radula*)  
**Two-Leaf Hakea** (*Hakea trifurcata*)  
**Woolly Bush** (*Adenanthos cygnorum*)  
**Mauve Regelia** (*Regelia inops*)  
**Tree Smokebush**  
 (*Conospermum triplinervium*)  
**Parrot Bush** (*Dryandra sessilis*)



### Small Plants

- **Silky Honeymyrtle** (*Melaleuca trichophylla*)
- **Dune Moses** (*Acacia pulchella*)
- **Honey Bush** (*Hakea lissocarpa*)
- **Silky Leaved Blood Flower**  
 (*Calothamnus sanguineus*)
- **Swan River Myrtle**  
 (*Hypocalymma robustum*)
- **Pixie Mops** (*Petrophile linearis*)
- **Coast Banjine** (*Pimelea ferruginea*)
- **Grey Cottonhead** (*Conostylis candicans*)
- **Devils Pins** (*Hemiandra pungens*)
- **Pincushion Coneflower** (*Isopogon dubius*)
- **Spiked Scholtzia** (*Scholtzia involucrata*)
- **Many Flowered Fringe Lily**  
 (*Thysanotus multiflorus*)
- **Drummonds Featherflower**  
 (*Verticordia drummondii*)



- All these plants are suitable for planting under powerlines.

**Greening WA offer a landscaping service for local plant gardens, if you are interested please contact us on 9481 2144.**