



The Formal Garden

Perth Plants for your Formal Garden

"The rules for future gardening start with the very fundamentals; take your lead from the climate and soil. To fight is to fight nature." Hugh Johnson, *"Gardening Companion: The principles and practice of the gardener's art"*, Mitchell Beazley, London, 1996.

The garden can be a place of contemplation and delight, a place to share good times with friends and family or a place to retire from the rush of modern. Gertrude Jekyll, designer of many famous gardens, stated that: "the first purpose of a garden was to give happiness and repose of mind". Gardening in Perth however can resemble a battle against the harsh climate and dry, barren soils.

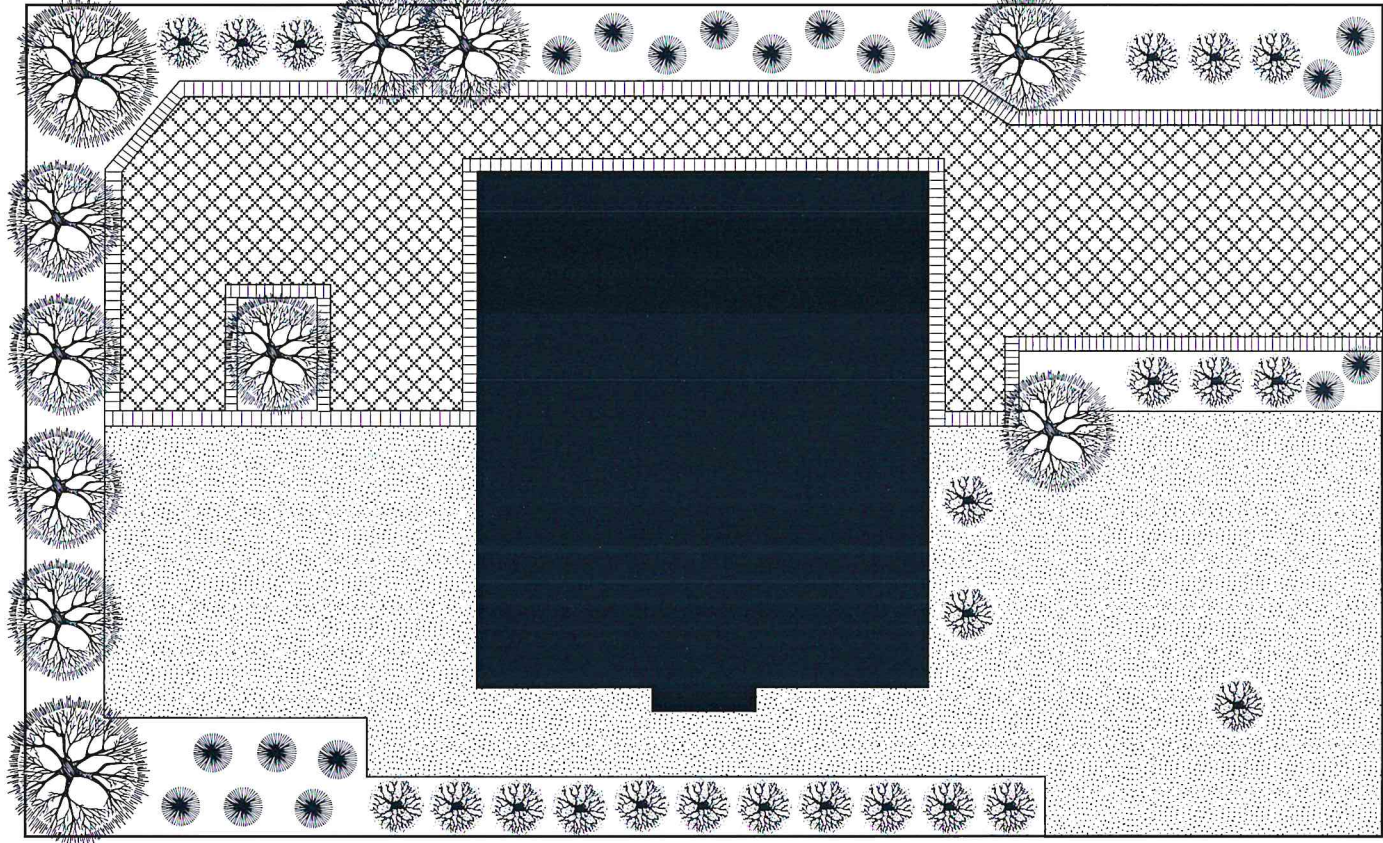
One solution is to use Perth plants. Perth plants are adapted to our climate, soil and scarce water. Other benefits follow: Our gardens become living components of the environment, providing habitat for native birds, animals and insects. Our heritage of unique plants is conserved and our gardens reflect a truly Perth character. The personal and environmental cost of maintaining our gardens is diminished because we need less water, fewer pesticides and fewer fertilisers.

Perth Plants come in all shapes, sizes and colours. Whether you like the look of a bush garden or you prefer a formal which complements your house or lifestyle, there are local plants to meet your requirements. The conceptual plan and species list will provide you with some fresh ideas on how to achieve a thriving and beautiful formal garden using Perth plants.

The Formal Garden

The formal garden is a style that lends itself to level sites or those that slope in only one direction. It is typified by straight lines, regular curves and symmetry. This style of garden is a descendent of the geometric designs of the great gardens of Italy and France. The high point of the style was reached in the gardens in Versailles, a grandiose vision of man's ability to manipulate and enhance nature. These days the formal garden, even a large one, is rather more modest.

The key to achieving a formal garden is balance. The garden is divided into equal halves or quarters and whatever is placed on one side of the main axis is repeated on the other. The formal garden demands the gardener use artificially shaped plants, hedges, topiary, espaliers and standards, taking a very active role. Colour is generally less important than form, mass, light and shade. Plants are usually chosen for their natural symmetry. This formal style, whilst requiring more thought and effort can have great impact. There are a number of Perth Plants which fit these requirements extremely well. Overleaf you will discover how to successfully interpret this style using these local plants - the results are sure to satisfy and impress.



Formal Garden Conceptual Plan and Species List

If you require more information about the plants on this page refer to the booklet, *Perth Plants for your Garden* which is available at your local nursery.



Tall Shrubs

- Rottneest Teatree (Melaleuca lanceolata)
- Swamp Cypress (Actinostrobus pyramidalis)
- Rottneest Island Pine (Callitris preissii)
- Swamp Sheoak (Casuarina obesa)
- Cockies Tongue (Templetonia retusa)
- Swamp Peppermint (Agonis linearifolia)
- Grey Honey Myrtle (Melaleuca incana)



Medium Shrubs



Silky-Leaved Blood Flower

(Calothamnus sanguineus)

Mauve Kunzea (Kunzea recurva)

Robin Redbreast Bush (Melaleuca lateritia)

Tangled Melaleuca (Melaleuca cardiophylla)

Zamia Palm (Macrozamia riedlei)

Grasstree (Xanthorrhoea preissii)

Shining Fanflower (Scaevola nitida)

Pink Spray (Guichenotia ledifolia)

Spiked Scholtzia (Scholtzia involucrata)



Small Plants

- Spider Net Grevillea (Grevillea preissii)
- Couch Honeypot (Dryandra lindleyana)
- Grey Cottonheads (Conostylis candicans)
- Lemon-scented Darwinia (Darwinia citriodora)
- Purple Flag (Patersonia occidentalis)
- Dune Moses (Acacia lasiocarpa)
- Pincushion Coneflower (Isopogon dubius)
- Cushion Bush (Calocephalus brownii)
- Coast Banjine (Pimelea ferruginea)
- Pixie Mops (Petrophile linearis)
- Morning Iris (Orthrosanthus laxus)

Power Line Friendly
A



Western Power

- All these plants are suitable for planting under powerlines.

Greening WA offer a landscaping service for local plant gardens, if you are interested please contact us on 9481 2144.