

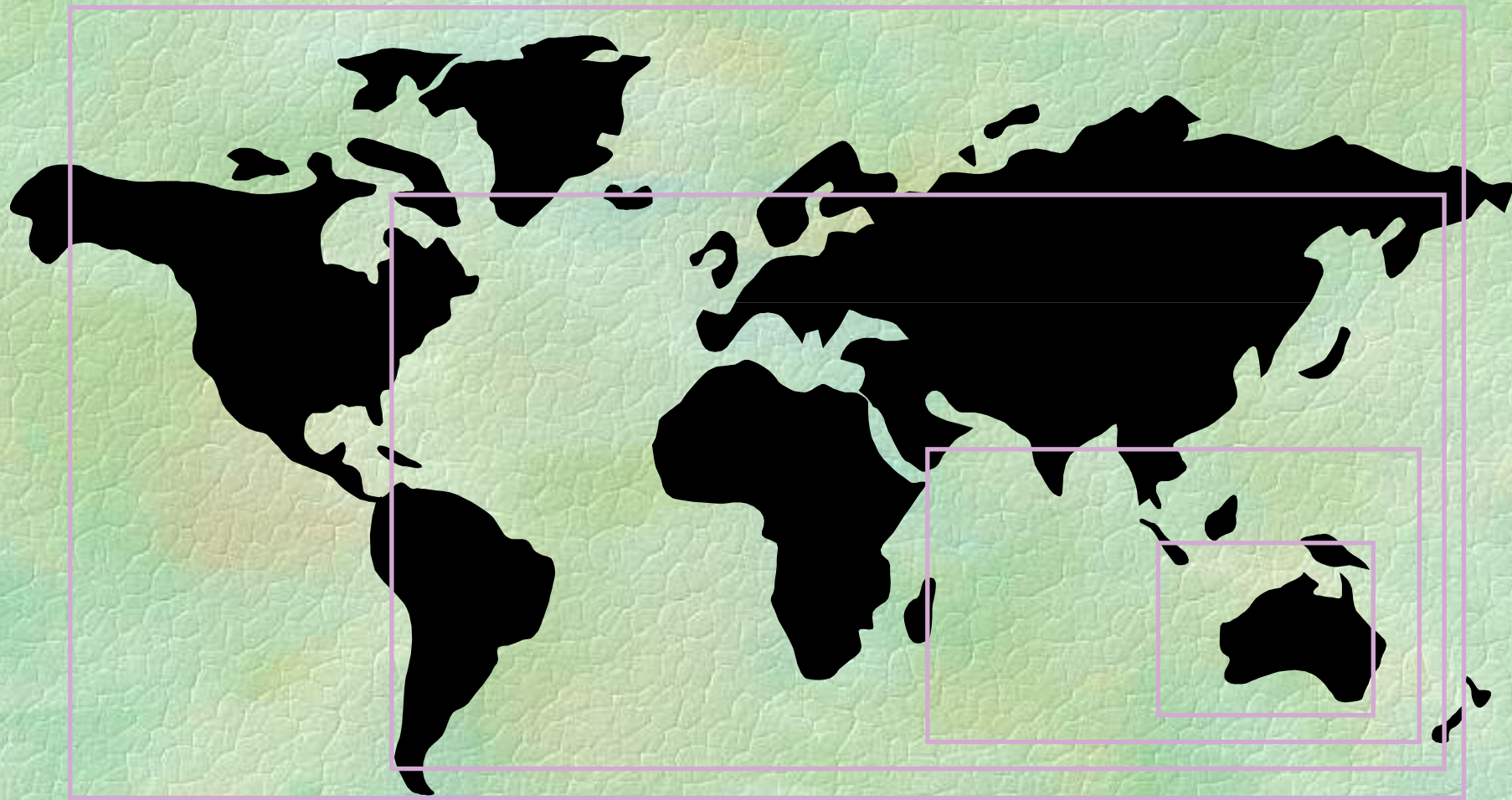
# Presentation on Albany APFL project



Syd Shea

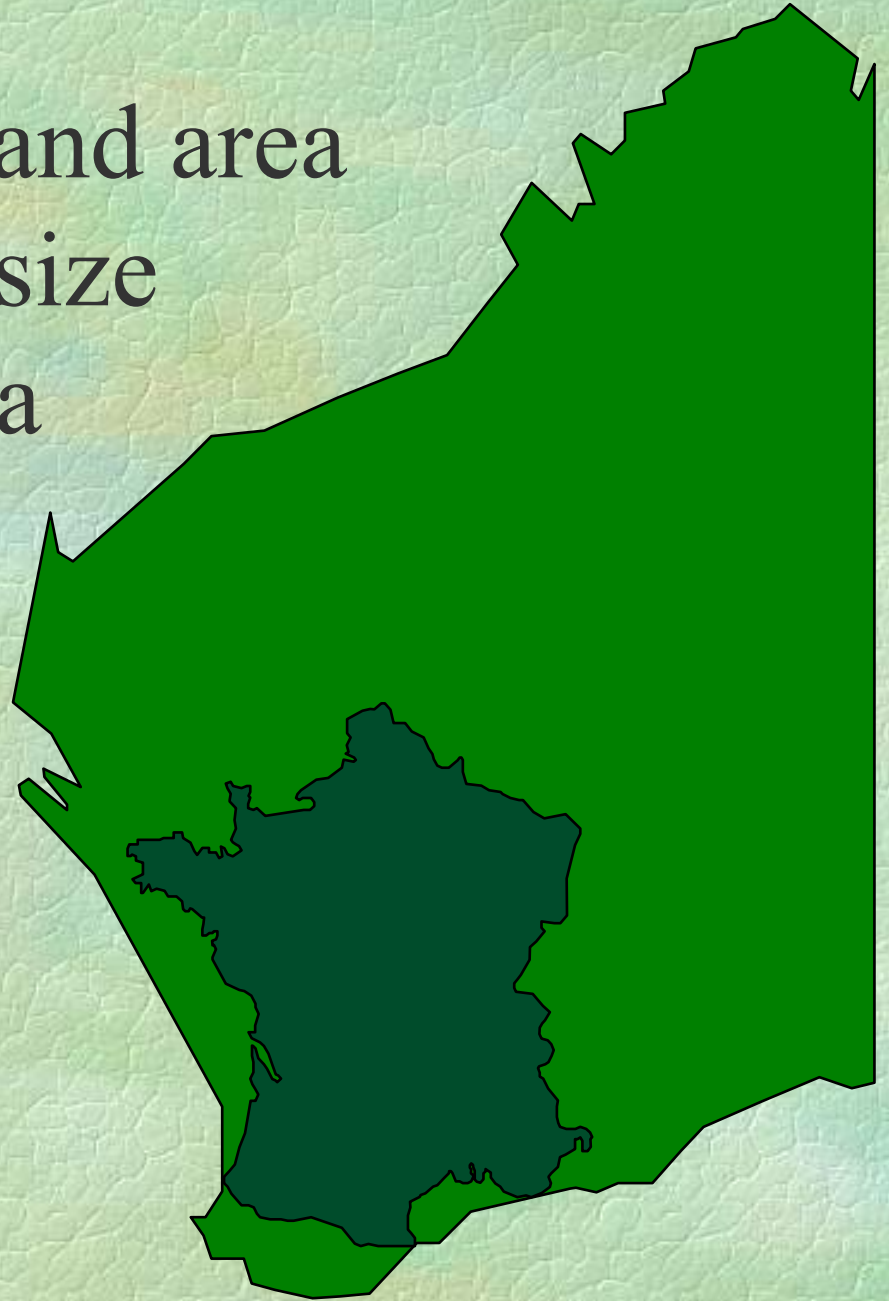
Executive Director, CALM





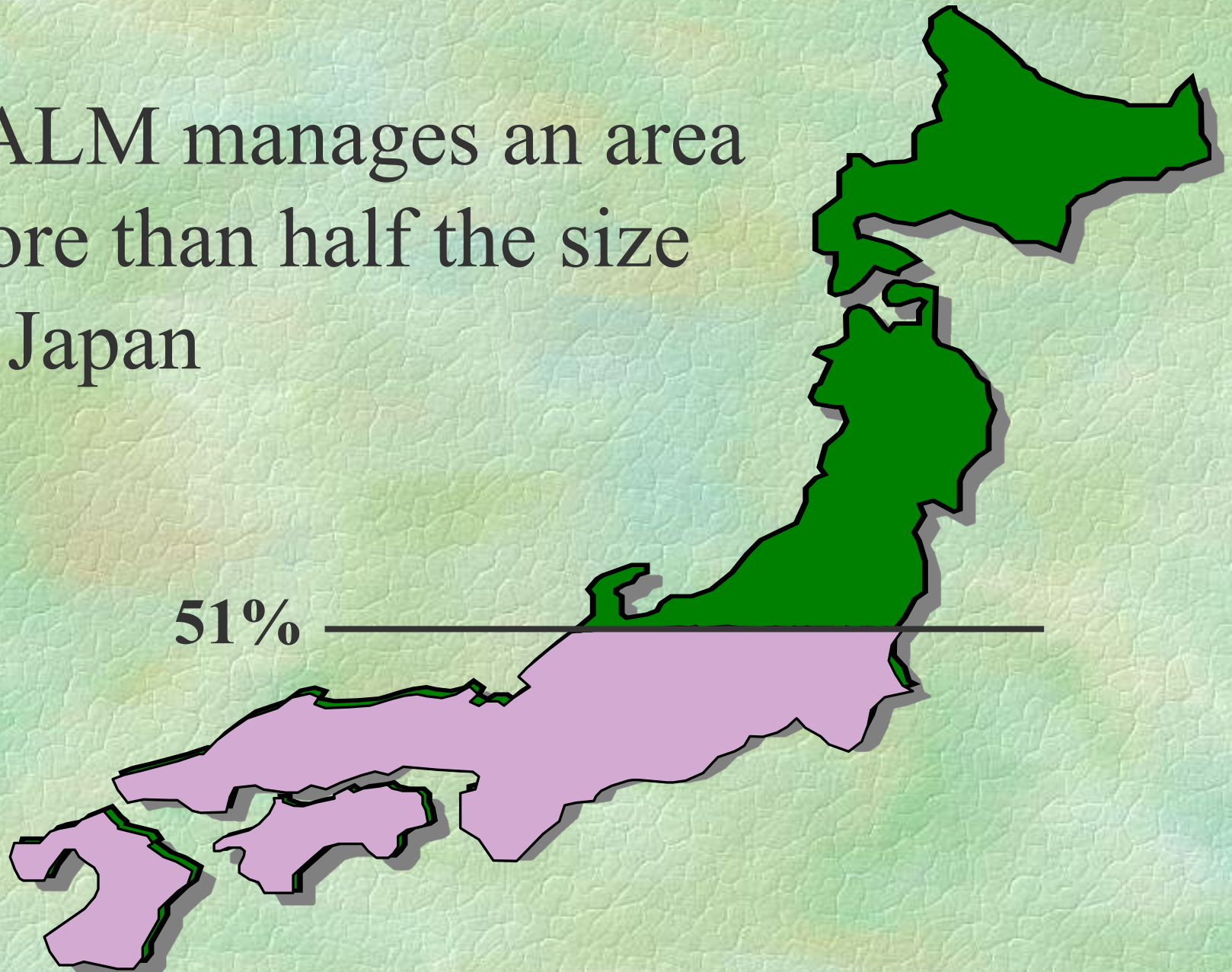


France occupies a land area  
about a quarter the size  
of Western Australia



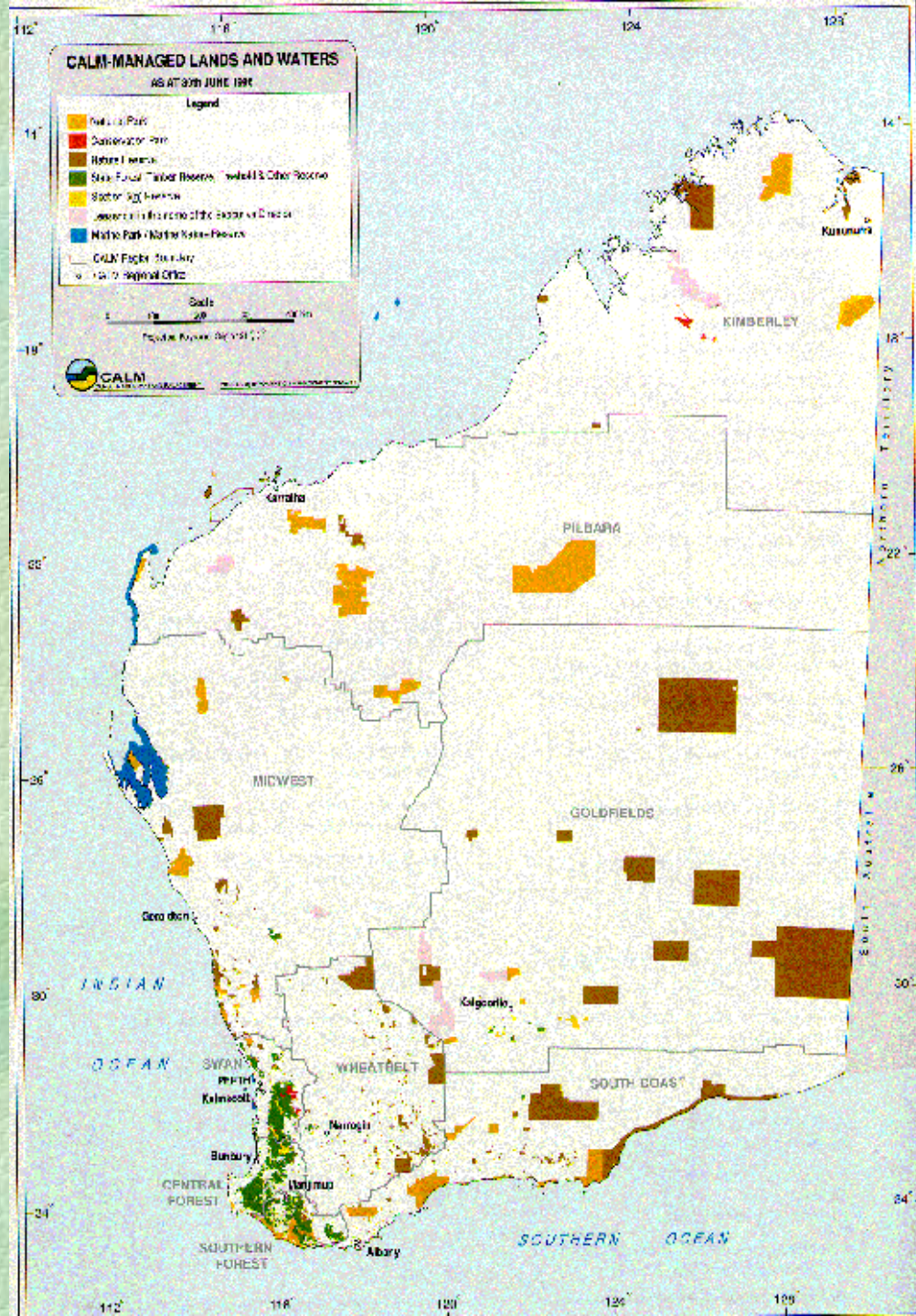


CALM manages an area  
more than half the size  
of Japan





# CALM managed lands and waters





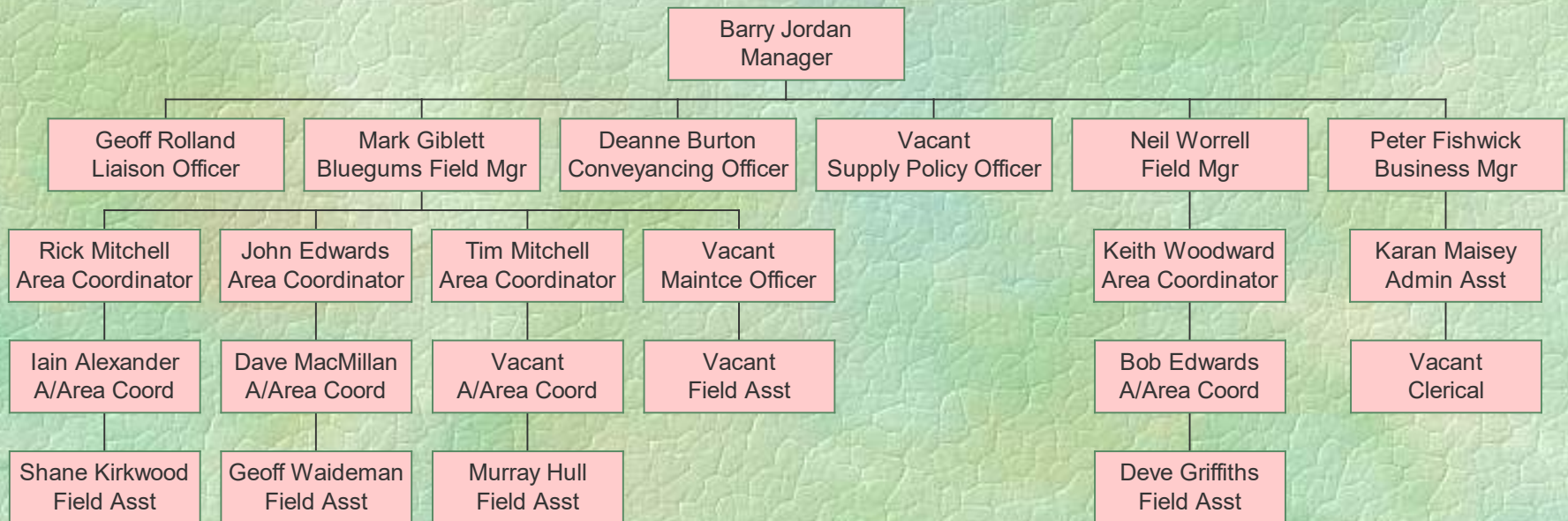
# CALM Organisation Chart



Figure 3



# South Coast Sharefarms - Organisationn Structure





# Expenditure and revenue on conservation and land management

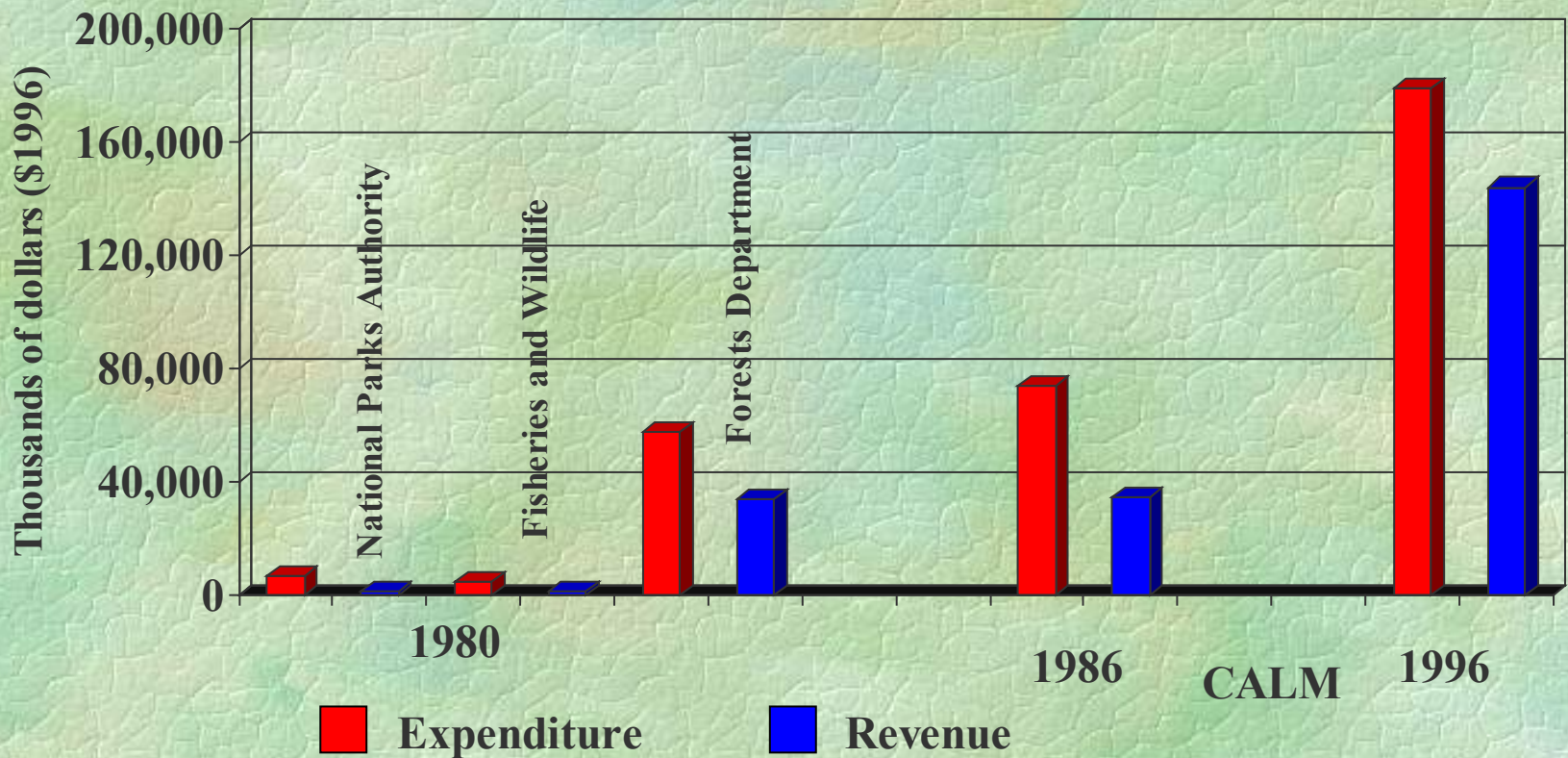
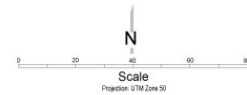


Figure 5



## Plantations Southwest Western Australia



### Legend

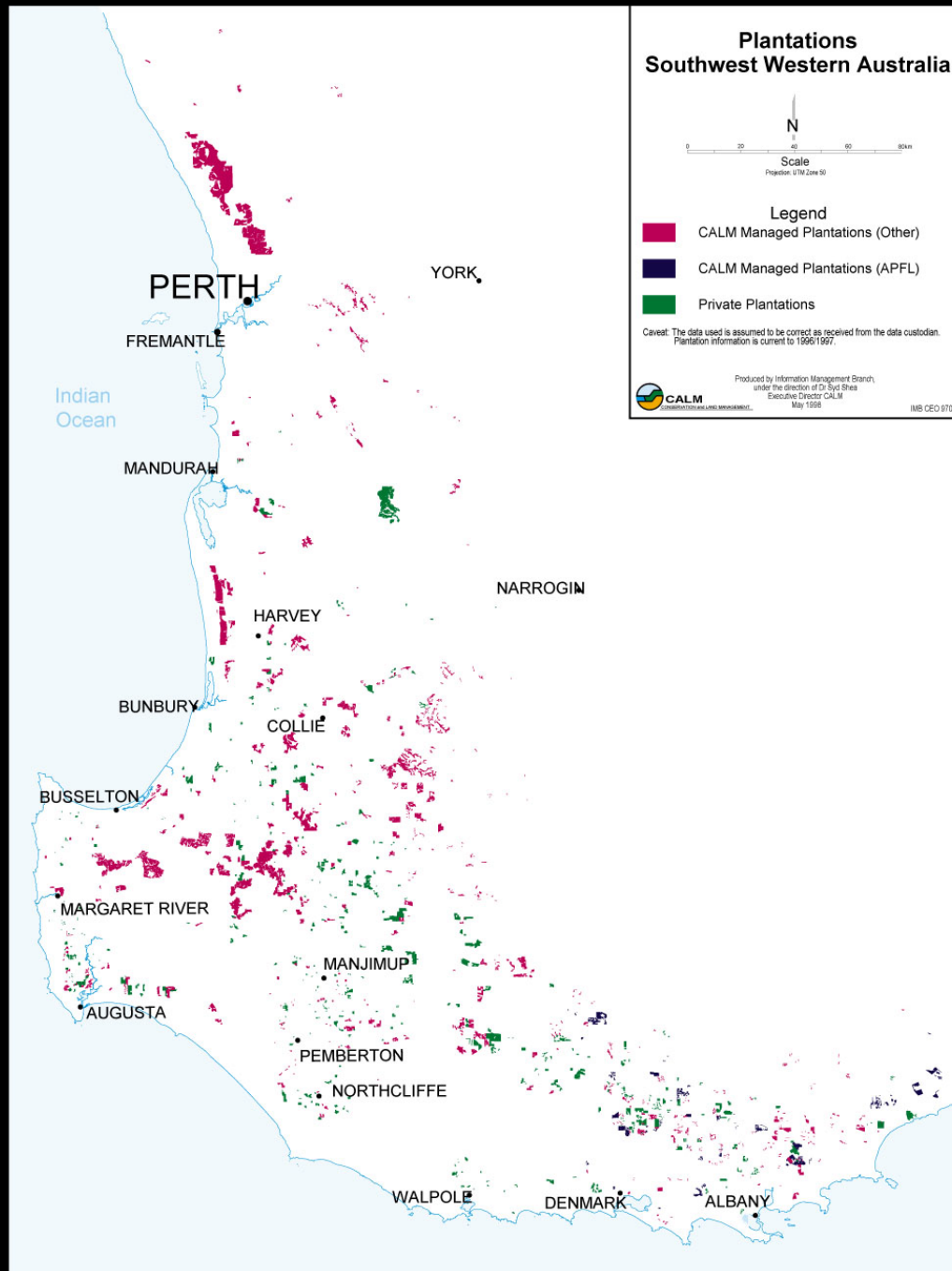
-  CALM Managed Plantations (Other)
-  CALM Managed Plantations (APFL)
-  Private Plantations

Caveat: The data used is assumed to be correct as received from the data custodian.  
Plantation information is current to 1996/1997.

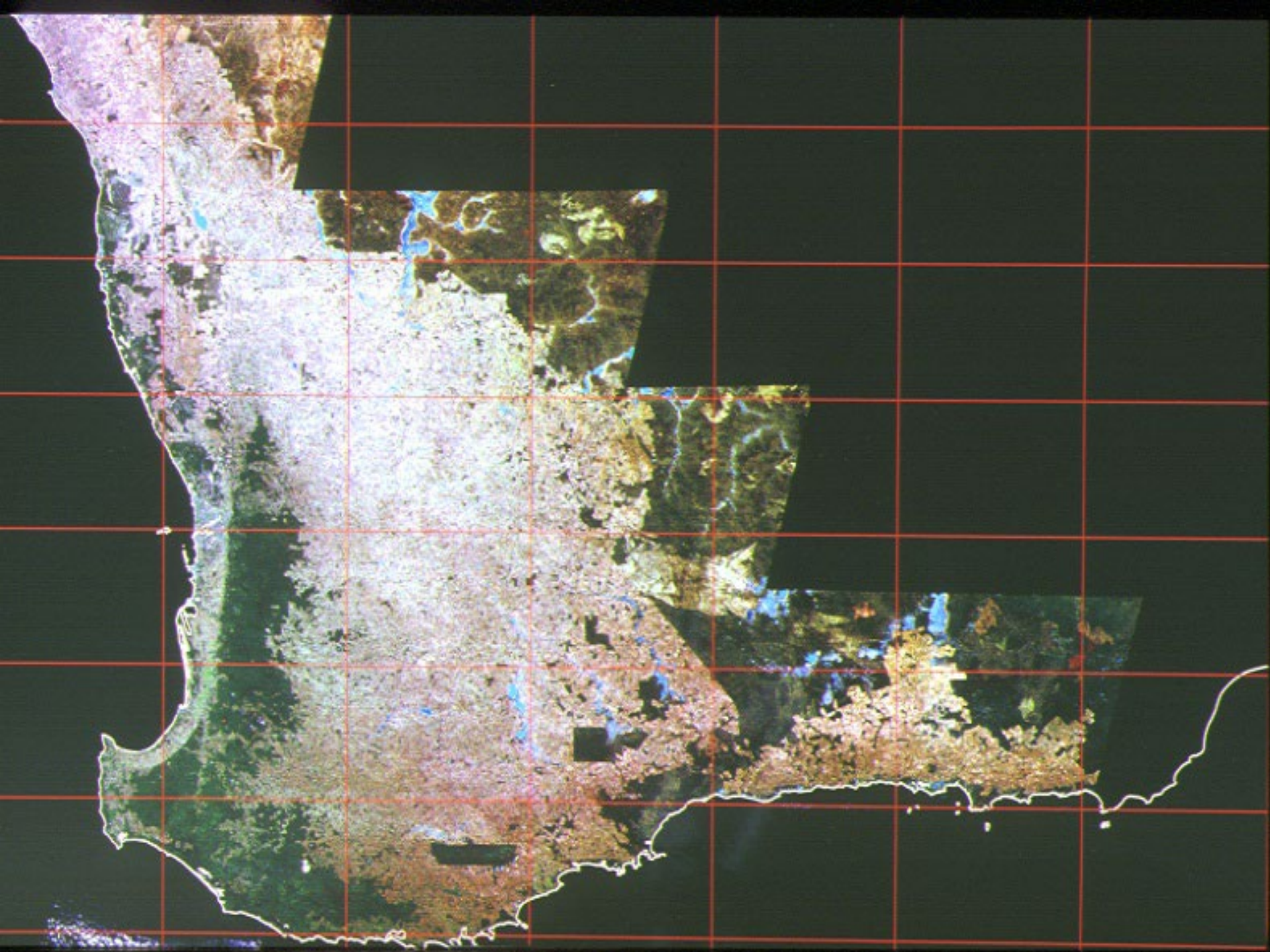


Produced by Information Management Branch  
under the direction of Dr Syd Sheas  
Executive Director CALM  
May 1998

IMS CEO 970026

















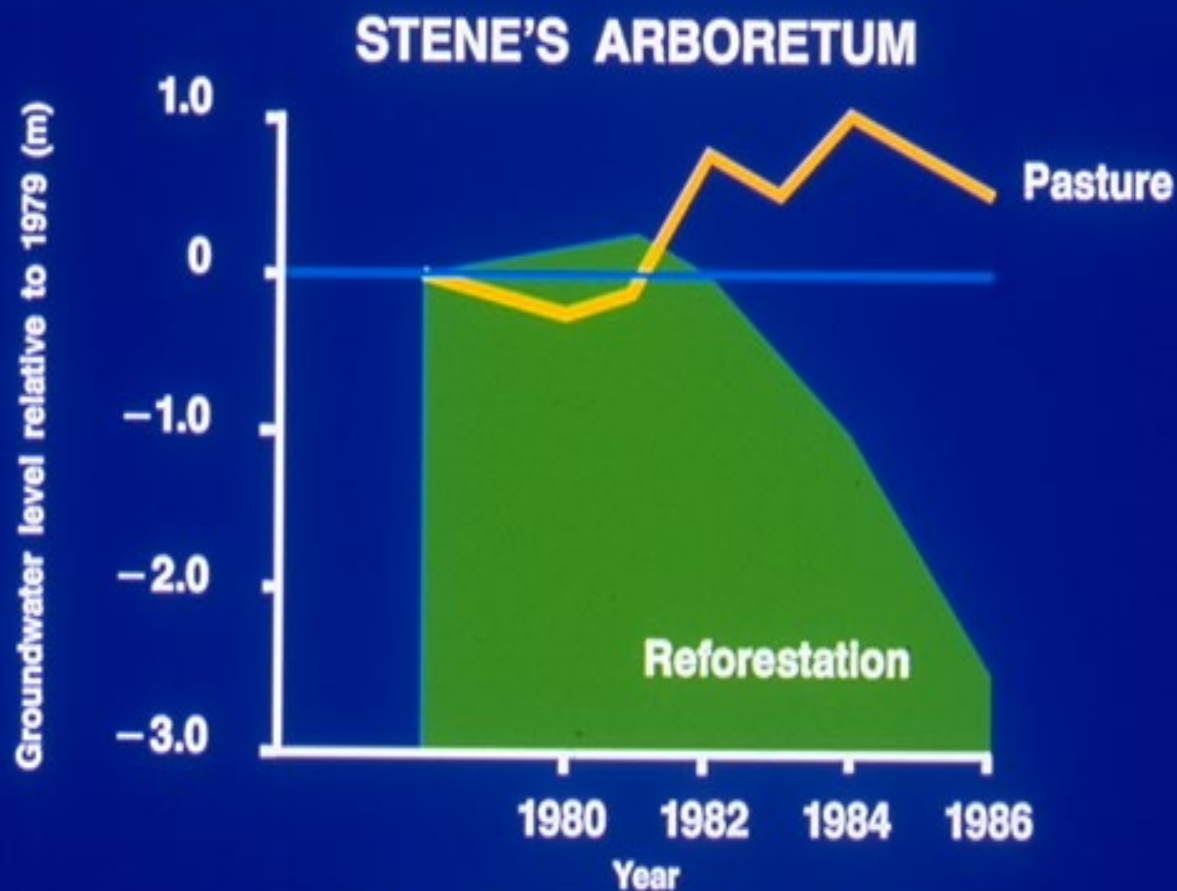








# THE EFFECT OF TREE CROPS ON WATER TABLE LEVELS



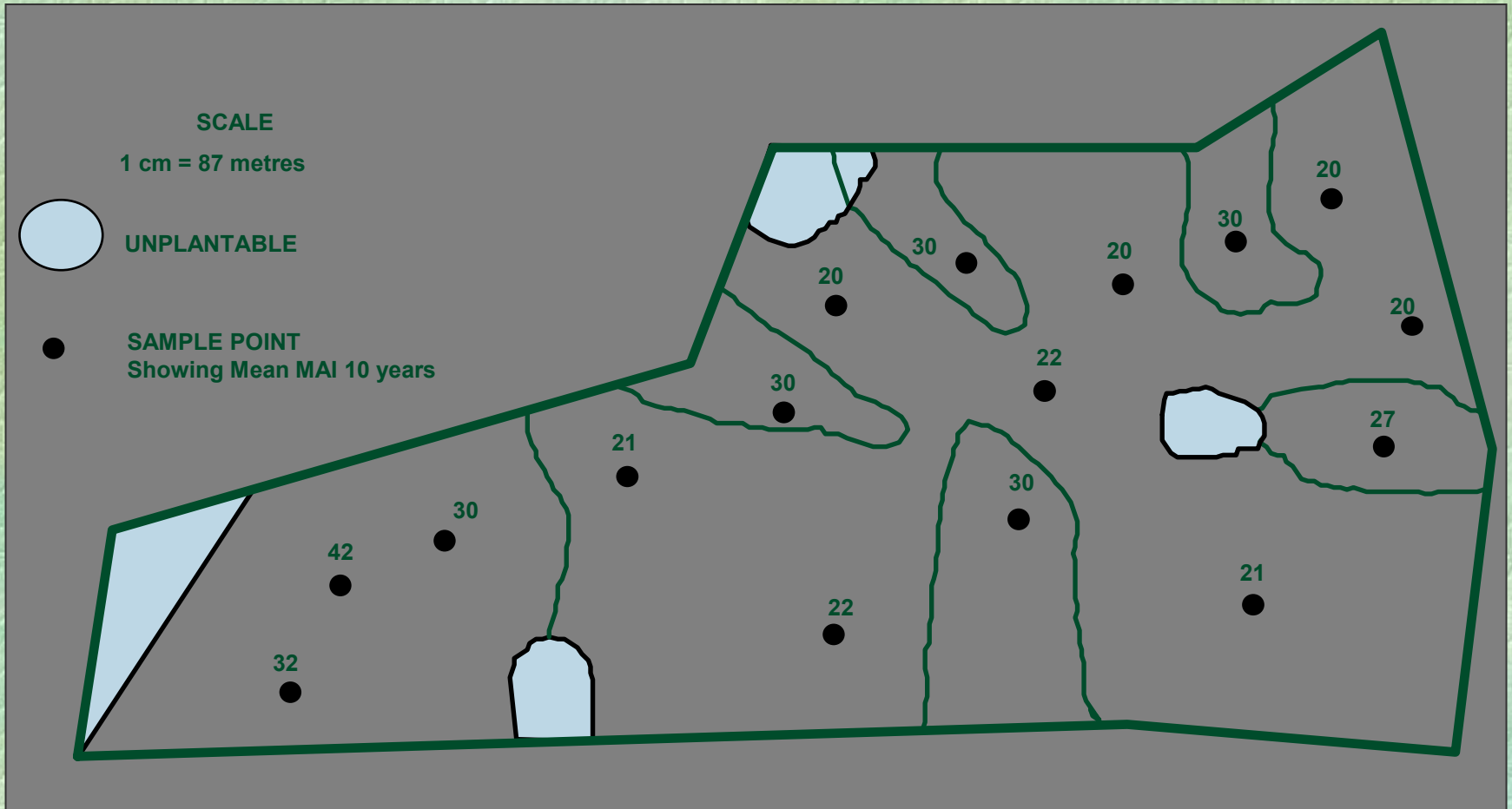
Water Authority of Western Australia  
July 1989  
Report No. WS 33



The objective should be to provide a secure supply of high quality wood fibre at the lowest price in the ship hold



## *E. globulus* site productivity assessment for a typical farm





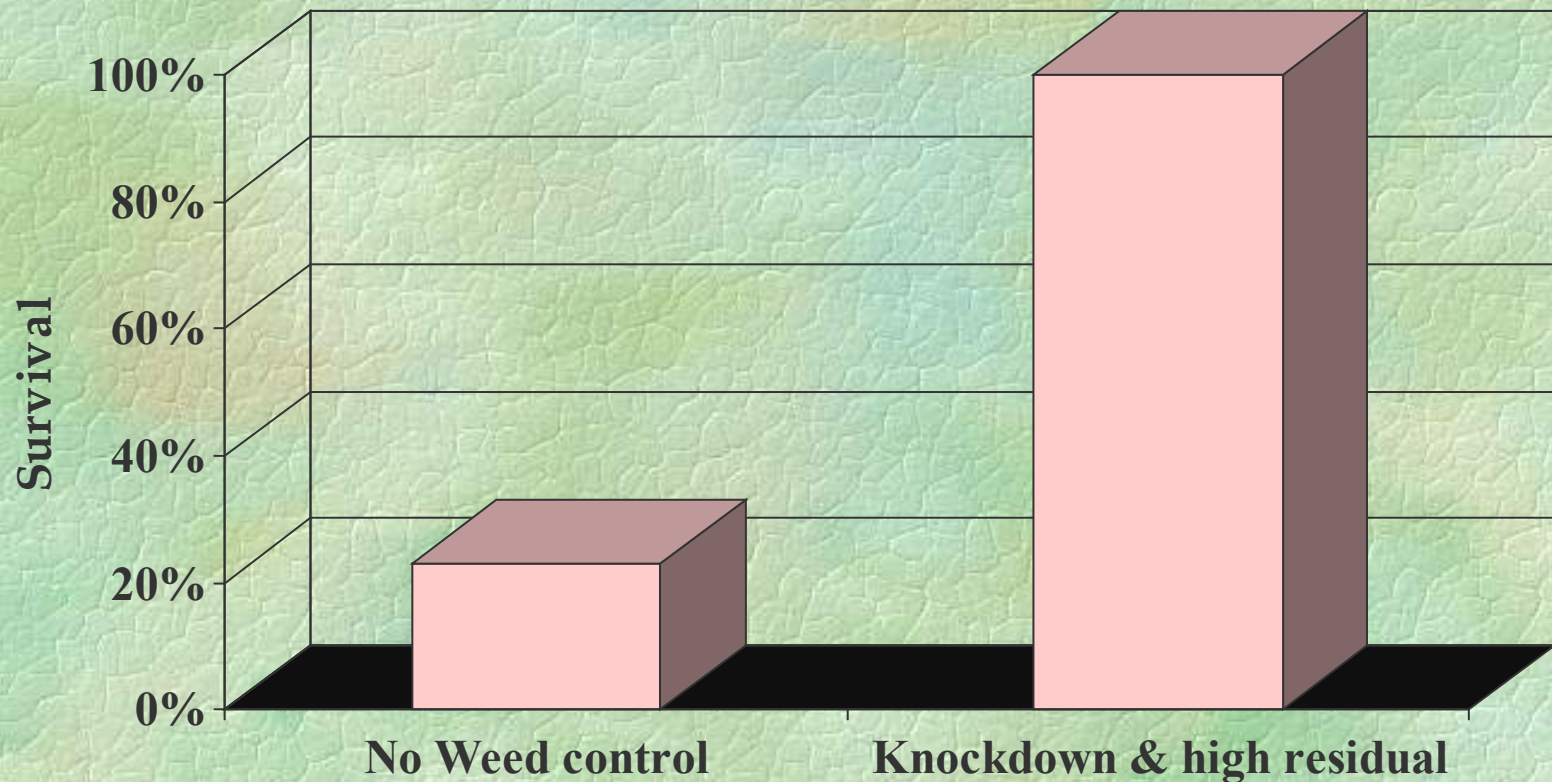








# Effect of chemical weed control on *Tree Crops*









# *Eucalyptus globulus*

## Breeding population trials

Program commenced in 1980

Source	Parents	Number	Area	Trees
CSIRO 1987 - 90	766	29	117 ha	107 000
King Island	83	1	3	3 000
Salt Tasmania	44	3	2	2 000
Orme	73	1	4	4 000
Orme (Prov)		2	11	6 000
APPM	73	4	4	3 000
CSIRO cc	135	1	3	3 000
Total	1174	41	144	128 000





Inspect an *E. globulus* seedling for quality. Check the stem diameter, look for a pruned fibrous root system and notice if the foliage has a red tinge to show the seedling is hardy. All these aspects will help in the survival of the seedling. To be confident that the seedling will give you extra profit from its volume production in 10 years' time, look for the Western Blue Gum label.



Western Bluegum

Tasmanian Bluegum



Trees are 2 years 8 months old

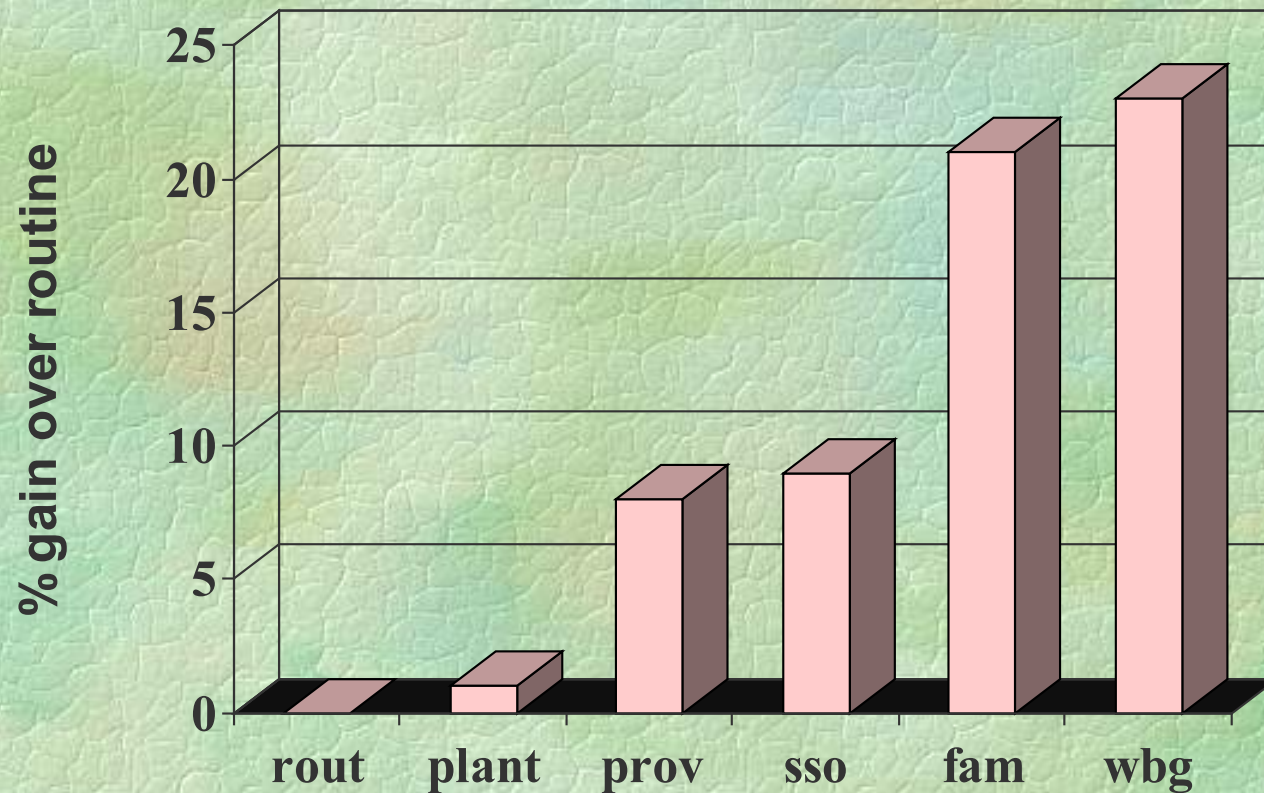


# Genetic Gains Trial:

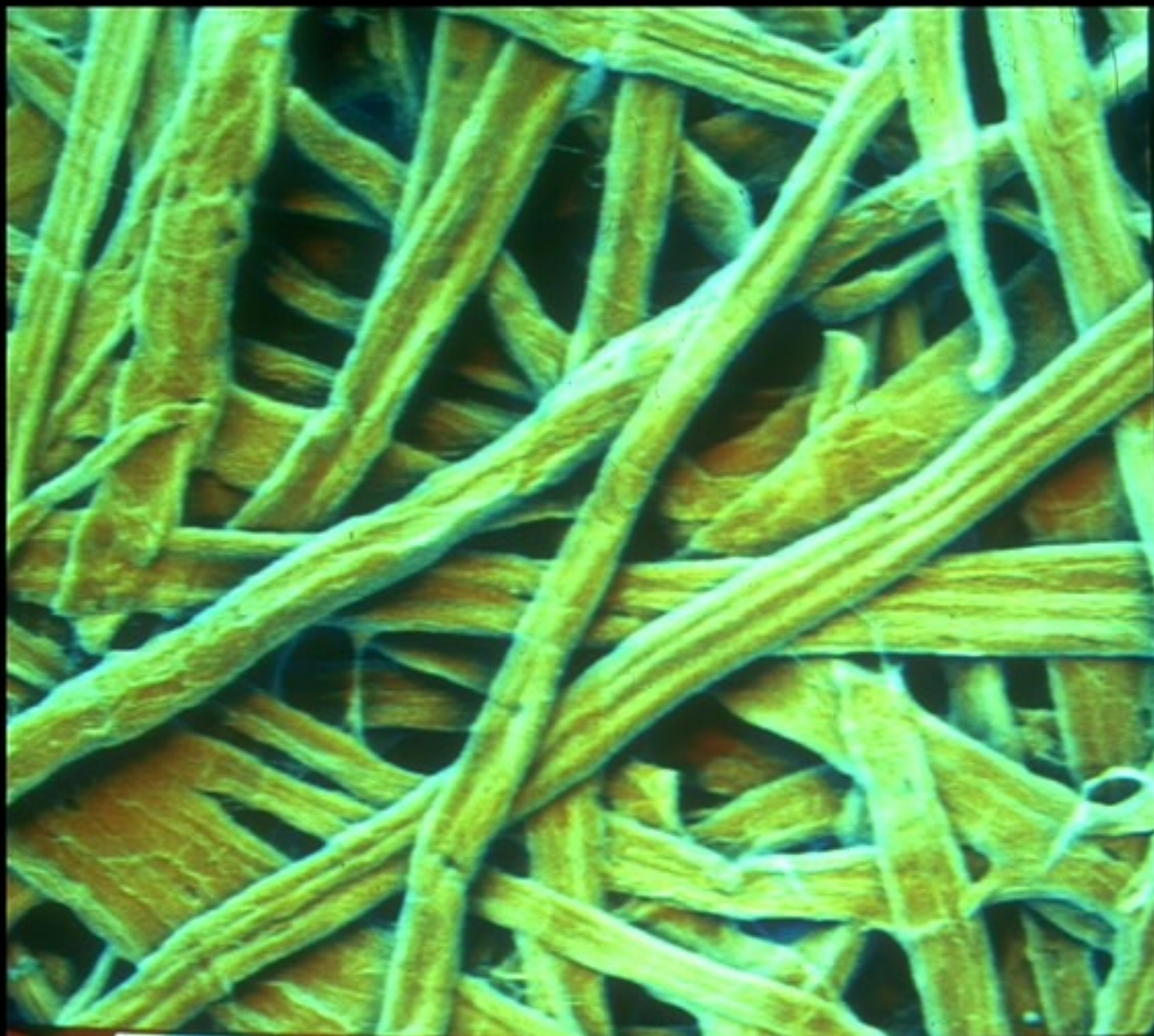
EG 44 and EG 45 (1994)

Measurement on April 1996

## wood volume







40PM

15KV

02

006

2

















CALM has joint ventures with 1303 farmers



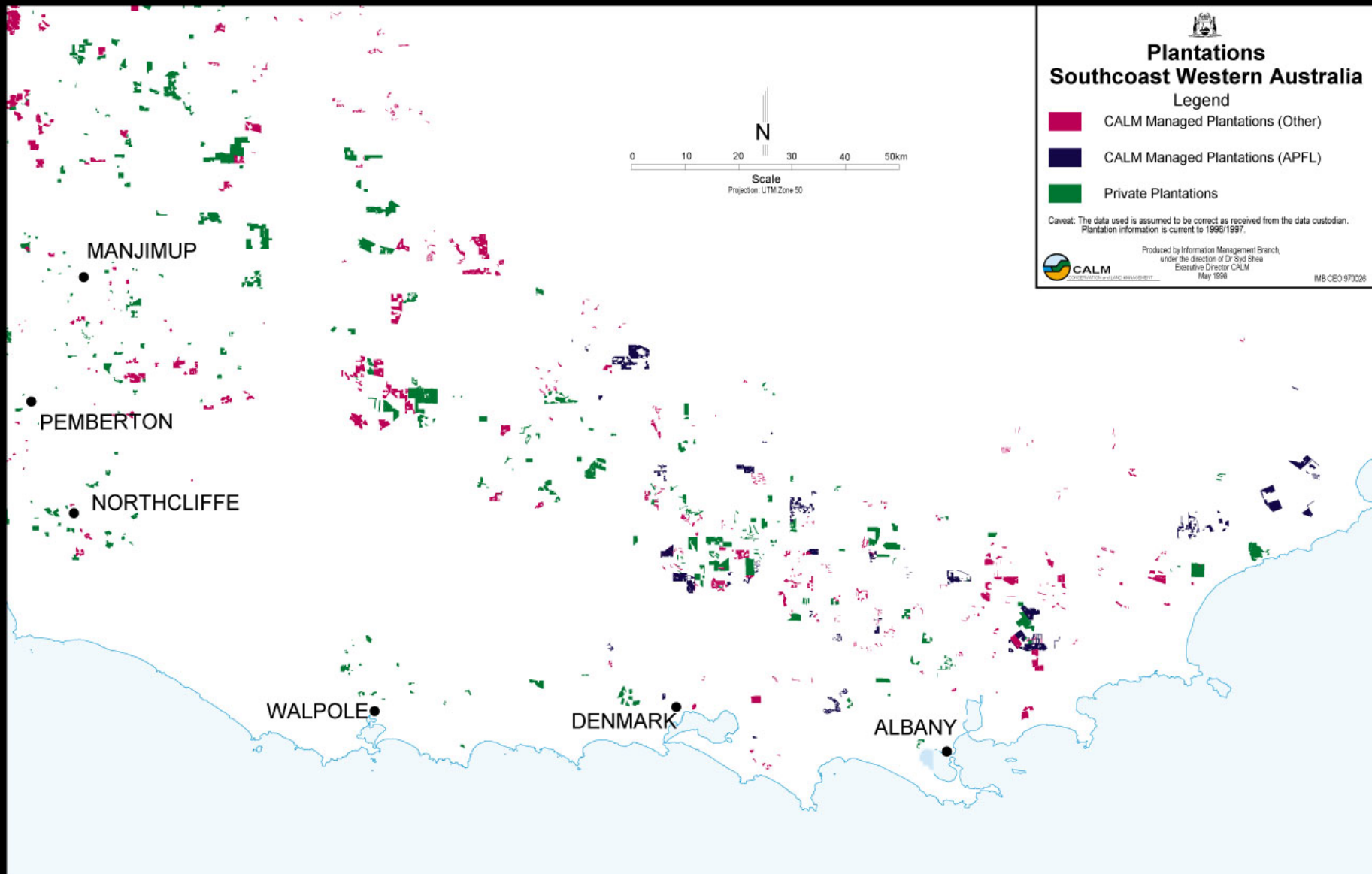
CALM has contracts with 84 land management contractors









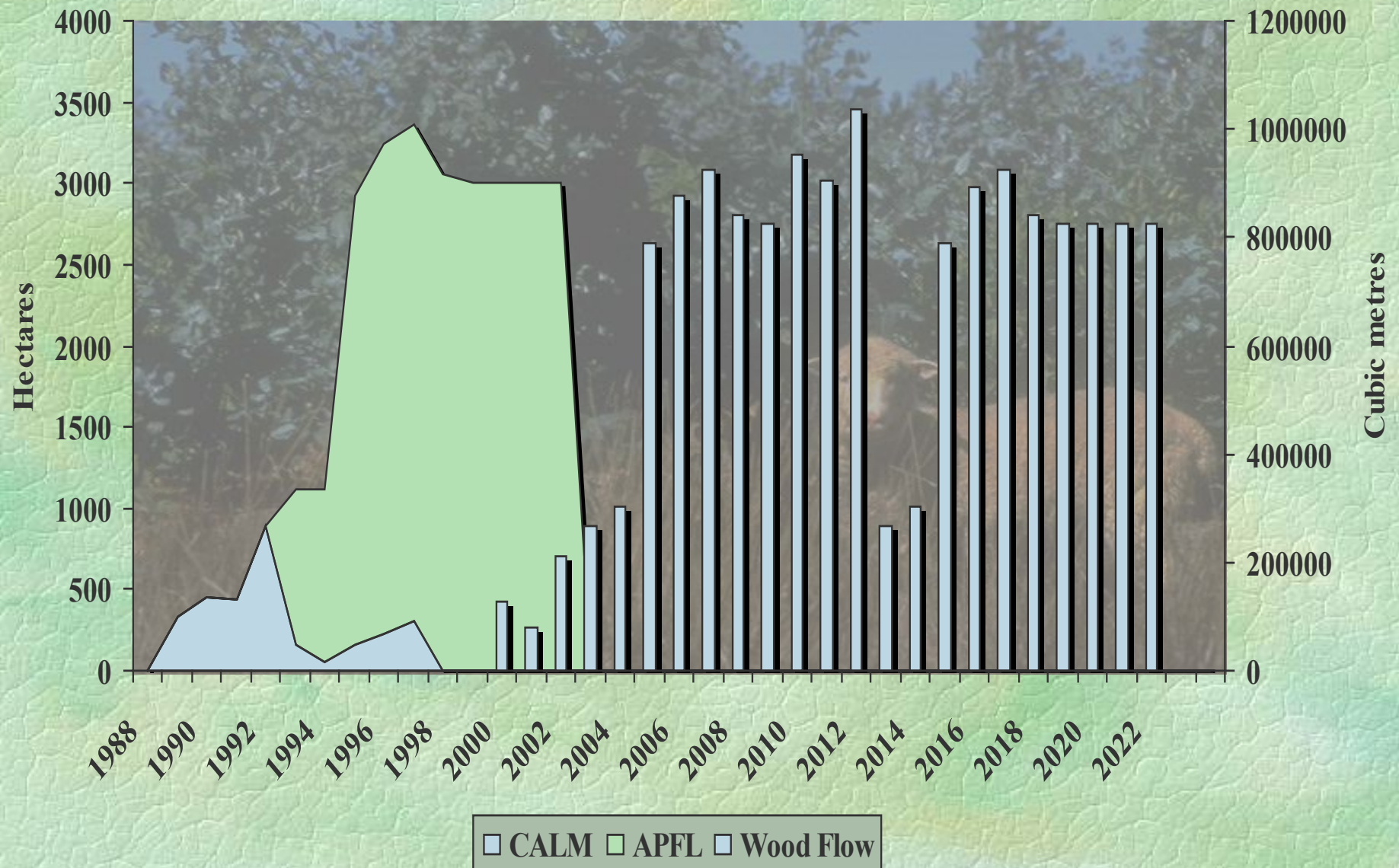








# Area of bluegums planted each year (CALM and APFL) and predicted wood flows





## Investment to date:

- ❑ \$20 million

## Investment to complete plantation program:

- ❑ \$30 million

## Investment required for harvesting, transport and processing:

- ❑ \$20 million to upgrade facilities at Albany Port
- ❑ \$15 million for a mill to process the harvested logs
- ❑ \$3-4 million for a transport system
- ❑ \$16 million for harvesters
- ❑ \$12 million for loading machinery
- ❑ \$22 million for log trucks

















## *Water Drawdown under Bluegum Plantations compared to Pasture*

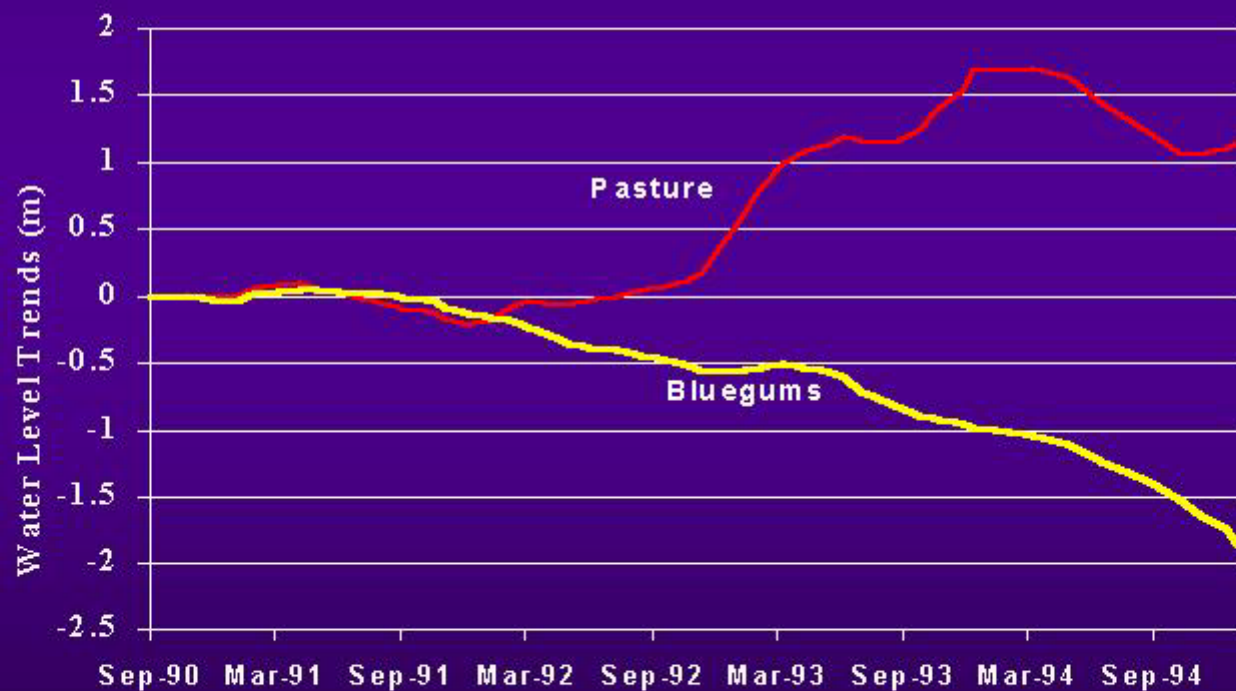
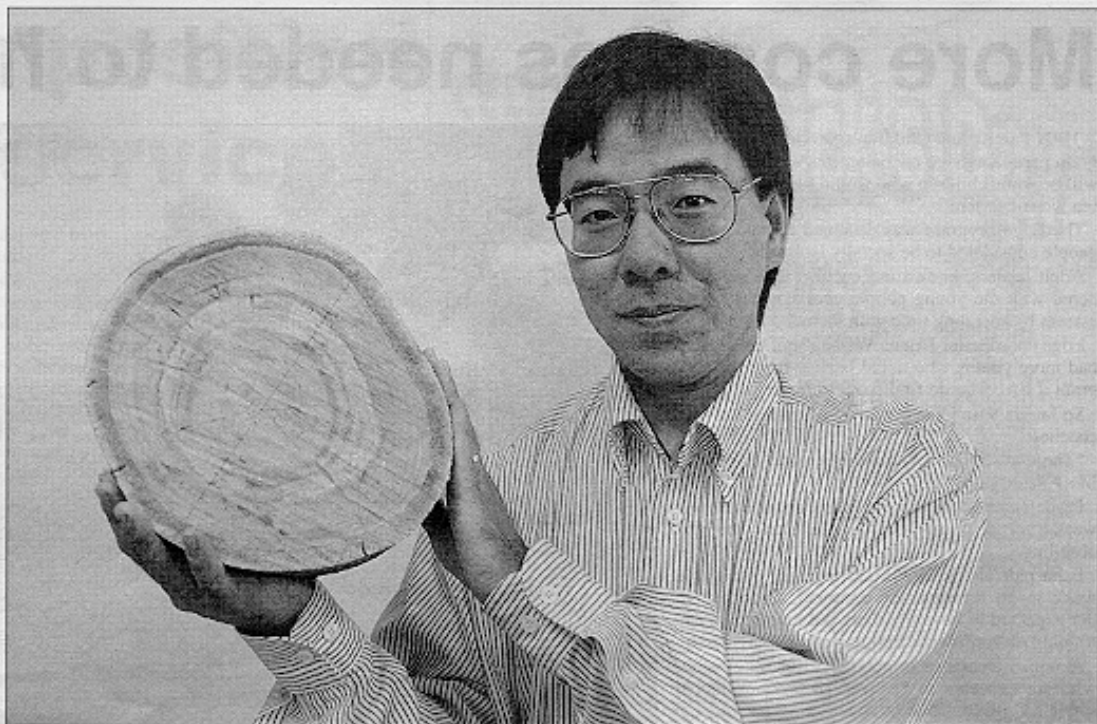


Figure 9





**WINNING WAYS:** Albany Plantation Forest Company director Tom Okada plans to accept the Asia Pacific Marketing Federation's inaugural gold environmental marketing award in Bangkok later this month.

## Conservation work wins praise

AN Albany company has won an international award for its services to the environment.

Albany Plantation Forest Company this week took out the Asia Pacific Marketing Federation's award inaugural gold marketing award, launched last year to encourage environmental conservation.

It was chosen from four finalists, from companies working in the 15 countries represented in the Asia Pacific Marketing Federation.

The company was formed in 1993 and plans to establish more than 20,000 hectares of bluegum

plantations in the Albany region.

Working with CALM, it had already planted nearly 14 million trees locally.

Its parent companies Oij Paper and Itochu Corporation are part of a WA-Japanese joint venture (with Bunnings Forest Products) who are planning a \$30 million woodchipping mill in the Great Southern. The project has been tipped to be operational by next year.

Director Tom Okada said the company was committed to preserving the global environment.

"Our project to establish commercial bluegum plantation is a long-term commitment to the environment and

economy of the Albany region," he said.

"Our sophisticated sharefarming scheme, which is being carried out in partnership with the local community, has now brought APFC international recognition."

Mr Okada will accept the award, with representatives Oij Paper, Itochu Corporation and Senshukai Co Ltd, at a ceremony in Bangkok on March 26 by her Royal Highness Princess Maha Chakri Sirindhorn. It is the second environmental award won by the company. In 1995 it won the Landcare Australia award for WA business.



