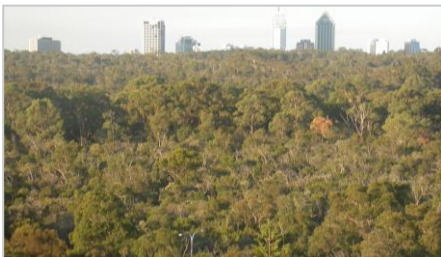


Common Fungi at Kings Park & Bold Park Western Australia

Kings Park and Bold Park are significant urban bushlands and gardens in the central and western suburbs of Perth, Western Australia, about 4 km distant from each other.

The fungi at Kings Park & Bold Park are representative of the fungi in the broader Perth region & southwest WA.



A long-term survey of the fungi at Kings Park & Bold Park began in 1999 and so far has discovered approx. 650 species of fungi at the Parks. Many more fungi species are yet to be discovered and identified at Kings Park & Bold Park.

*Common Fungi at Kings Park & Bold Park
Western Australia*

Images & text by N.L. Bougher
Honorary Research Associate, W.A. Herbarium,
Department of Biodiversity Conservation and
Attractions © 2024

40 Common Fungi at Kings Park & Bold Park

Fungi help to restore & maintain health of the Parks

Like for most areas, relatively little is known about the fungi at Kings Park & Bold Park. But we can be sure that there are some compelling reasons why we should aim to learn more about the fungi at the Parks. The reasons include:

- Fungi capture & recycle precious nutrients at the Parks.
- Fungi are beneficial (mycorrhizal) partners of plants at the Parks – ranging from tuart trees to orchids.
- Fungi feed large & small animals at the Parks.
- Fungi may help bushland at the Parks to recover after fire.

Spotting fungi at the Parks

Fungi at Kings Park & Bold Park can be seen at any time of the year after rains, especially in the garden areas. Autumn and winter are the best time to see fungi in the garden and bushland areas. Some of the fungi at Kings Park & Bold Park are very colourful. Others may be drab/dull, and very small. While walking around in the Parks it is possible to see some of the more conspicuous fungi out in the open, or on logs, or on trees high above the ground. Most of the fungi at Kings Park & Bold Park are less conspicuous - hidden amid leaf litter or under shrubs or logs.

It is illegal to collect fungi on public land without a "Flora taking" licence. Please admire the fungi and maybe photograph them, then leave them undisturbed to continue their silent work.

40 Common Fungi at Kings Park & Bold Park

Purpose of this Guide

This guide is intended as a first gateway into the incredible diversity of fungi at Kings Park & Bold Park. Its four A4 pages present a single image and brief information each for **40 selected fungi** - their habitat in the Parks, and a few of their main features. Scales shown are approximate. The selected fungi are among the most frequently recorded species during the survey at the Parks, and attract many observations on online resources such as *i-Naturalist*.

Guide layout & print out options

The A4 page layout is designed for electronic viewing, or printing with an option to fold or cut it in half at the vertical dotted line into A5 size pages. Each A4 page may similarly be folded or cut into four narrower pocket-sized pages (at the dotted line & solid lines).

The Fungi



1. GHOST FUNGUS

Omphalotus nidiformis

On or near living or dead trees/shrubs & stumps.
Cap white to grey-brown. Stem absent. Gills white.
Glow in the dark!

40 Common Fungi at Kings Park & Bold Park



2. GOLDEN WOOD FUNGUS

Gymnopilus allantopus

On fallen wood, esp. banksia. Cap yellow-brown. Stem without a ring or cup. Gills bright yellow.



3. COMMON ROSEGILL

Volvopluteus gloiocephalus

In gardens, wood-chipped areas, lawns. Cap slimy, pale or grey. Stem without a ring, with cup at base.
Gills white then salmon pink.



4. VERMILLION AMANITA

Amanita xanthocephala

In litter, sand or grass/lawns near trees. Cap orange or yellow. Stem without ring, cup at base. Gills white.

40 Common Fungi at Kings Park & Bold Park



5. AUSTRALIAN HONEY FUNGUS

Armillaria luteobubalina

Clusters on or near living or dead trees & shrubs, or on stumps. Cap golden yellow. Stem with ring. Gills pale.



6. ARCHERS CORTINARIUS

Cortinarius archeri

In litter, near trees. Cap vivid purple. Stem with a narrow ring, no cup at base. Gills purplish then brown.



7. CONICAL BRITTLESTEM

Parasola conopila

Abundant in wood-chipped & mulched garden areas. Cap brown, soon fading. Gills pale then dark grey.

40 Common Fungi at Kings Park & Bold Park



8. BRICK RED LACCARIA

Laccaria lateritia

In gardens & bushland near trees/shrubs. Cap orange-brown, fading. Stem without a ring or cup. Gills pinkish.



9. EGG YOLK FUNGUS *Bolbitis titubans*

On lawns and wood-chipped areas. Cap bright yellow & slimy at first. Stem without ring. Gills pale then brown.



10. GREEN-GILLED MUSHROOM

Chlorophyllum molybdites

On lawns. Cap white with darker large scales. Stem with ring. Gills white then kakhi green when old.

40 Common Fungi at Kings Park & Bold Park



11. SHAGGY PARASOL

Chlorophyllum brunneum

In wood-chipped/mulched areas. Cap with large brown scales. Stem with skirt-like ring. Gills always white.



12. GLISTENING INK CAP

Coprinellus truncorum/ micaceus

In clusters of troops near base of trees/shrubs. Cap golden with glistening granules, soon grey & inky.



14. WA MAGPIE FUNGUS

Coprinopsis aff. stangliana

In disturbed weedy areas. Cap grey with white patches. Stem without ring. Gills eventually inky.

40 Common Fungi at Kings Park & Bold Park



13. ERUPTING RUSSULA

Russula erumpens

In sandy soil often seen on sand tracks in bushland. Cap white. Stem short, without a ring. Gills white.



15. SLIMACELLA *Limacella pitereka*

In litter in bushland. Cap slimy, tan then pale. Stem without a ring or cup. Gills white.



16. FIELD MUSHROOM

Agaricus campestris

In gardens/grass/lawn areas. Cap white. Stem with a ring. Gills pink then brown.

40 Common Fungi at Kings Park & Bold Park



30 mm

17. EUCALYPT CREPIDOTUS

Crepidotus eucalyptorum

On trees, esp. tuarts. Soft shell-shaped, yellow-brown. Gills pale then brown.



15 mm

18. A SAW-TOOTH FUNGUS

Lentinellus pulvinulus

On trees, esp. tuarts. Shell-shaped, pale brown. Gills cream with toothed edge (use lens to see serrations).



60 mm

19. GIANT GILLED BOLETE

Phylloporus clelandii

In litter or roadsides near trees, e.g. along May Drive. Cap brown. Gills yellow, blue when touched or exposed.

40 Common Fungi at Kings Park & Bold Park



40 mm

20. A BLUING BOLETE

Gyroporus occidentalis

In litter or roadsides near trees. Instantly vivid blue when touched or exposed. Stem chambered and with a rind.



60 mm

21. SLIPPERY JACK

Suillus granulatus

In litter or grass/lawn near pine trees. Cap slimy, brown. Stem without ring, with small scales. Pores yellow.



20 mm

22. HOLE IN THE GROUND

Peziza austrogeaster

In sandy soil in bushland & gardens. Brown, urn-shaped cups well-embedded in the sand.

40 Common Fungi at Kings Park & Bold Park



20 mm

23. A CUP FUNGUS

Peziza repanda
In wood-chipped & mulched garden areas. Brown, bladder-like with small opening, later cup-shaped.



5 mm

24. EYELASH CUP FUNGUS

Scutellinia scutellata (& related species)
On wood, esp. (often burnt) logs. Bright orange saucers-fringed with black hairs.



15 mm

25. ONION EARTHBALL

Scleroderma cepa

In bushland & gardens near trees/shrubs. Solid purplish-black interior then breaking open & brown-powdery.

40 Common Fungi at Kings Park & Bold Park



40 mm

26. DOG POO FUNGUS

Pisolithus species

In bushland & gardens near trees/shrubs. Solid with tar-like interior then opening & brown-powdery.



10 mm

27. A BIRDS NEST FUNGUS

Cyathus olla

Abundant in wood-chipped & mulched garden areas. Small trumpet-shaped cups with some grey 'eggs'.



15 mm

28. RED CAGE FUNGUS

Clathrus ruber

In gardens, wood-chipped areas. Red wrinkled arms emerge from white egg. Foul odour attracts blowflies.

40 Common Fungi at Kings Park & Bold Park



29. COLLARED EARTHSTAR

Geastrum triplex

In wood-chipped & mulched gardens. Brown thick-fleshed arms, grey central spore sac seated in a collar.



30. WHITE PUNK

Laetiporus portentosus

On living trees, often high up, esp. on tuarts. Large, pale-coloured brackets. Eventually falling to ground.



31. CURRY PUNK

Piptoporus australiensis

On living trees, esp. tuarts, high & low. Large, orange then faded brackets. Pungent odour, & stains hands.

40 Common Fungi at Kings Park & Bold Park



32. SCARLET BRACKET

Trametes coccinea

On fallen wood, logs, stumps. Bright orange, fading & persisting for many months.



33. WASP NEST BRACKET

Hexagonia vesparia

On living or dead trees/shrubs. Small thick hard bracket with large angular pale pores.



34. WOODY LAYERED BRACKET

Fomitiporia robusta

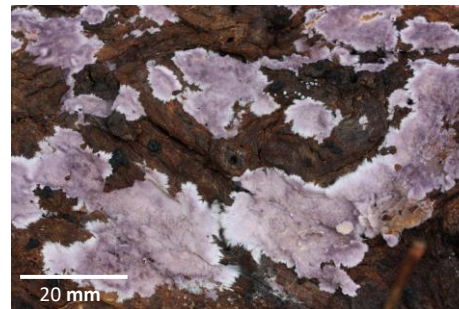
On living or dead trees/shrubs. Hard woody bracket with charred-like top and fine pale pores below.

40 Common Fungi at Kings Park & Bold Park



35. SLENDER CORAL *Ramaria filicicola*

In litter in bushland. Delicate upright branches, yellowish-tan.



36. VIOLET SKIN FUNGUS

Phlebiopsis crassa

On fallen wood & logs. Magenta-violet smooth flat growth with a fringed margin.

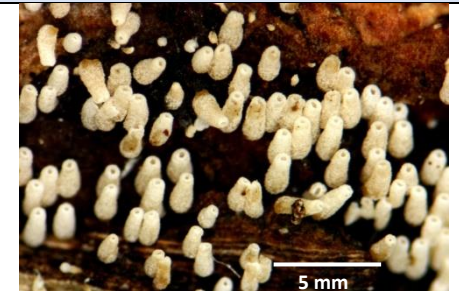


37. TUART NUT FUNGUS

Harknessia uromycoides

On fallen tuart nuts. Numerous minute pustules (use lens to see).

40 Common Fungi at Kings Park & Bold Park



38. MINIATURE CHIMNEY POTS

Henningsomyces candidus

On fallen wood in dense colonies. Numerous, tiny, tubular bodies (use lens to see).



39. BRIDAL CREEPER RUST

Puccinia mysiphilli

On Bridal Creeper. Orange & pale patches.



40. BOLETE EATER

Hypomyces chrysospermum

A parasitic mould on bolete fungi, earthballs & some others. White or grey then eventually bright yellow.