

52/1

Dwellingup Safety Prescription No. 1 - Alcoa Minesite

1. INTRODUCTION

Bauxite mining involving the use of explosives and heavy machinery is currently taking place in areas of State Forest within Dwellingup Division.

In the course of their official duties all F.D. personnel are authorised to enter any mining area, however, due to the dangers associated with the mining activity the safety prescription detailed below is to be followed when entering these areas.

2. AIM

To protect from injury and accident all F.D. personnel working in Forest areas influenced by current mining operations.

3. PRESCRIPTION

3.1 Zone of influence over which this prescription is to apply is:- (see also Appendix II plan)

3.1.1 All current mine pits i.e. in the process of being  
(a) cleared  
(b) mined  
(c) rehabilitated

3.1.2 All forest areas within 1km of the boundary of the areas nominated in 3.1.1

3.2 Advice of entry into a zone of influence must be made to:-

3.2.1 Dwellingup F.D. Office for noting on the disposition board by either radio or telephone and advice of daily blasting times.

3.2.2 Alcoa Huntly and Del Park Mining Production Planning Supervisors for either Huntly (telephone Pinjarra 311 611 Mr Paul Hallam), Del Park (telephone Pinjarra 311 611 Mr Peter Heydon) depending upon area of entry either direct by telephone or by radio via Dwellingup F.D. office.

3.3 Details of advice required by Alcoa.

3.3.1 Name

3.3.2 Job Location

3.3.3 E.T.A. and E.T.D.

- 3.3.4 Communications e.g. F.D. radio at personal contact if not on radio.
- 3.3.5 Confirmation of daily blasting times.
- 3.4 Alcoa minesite rules. (See appendix I). All F.D. staff are to be familiar with the controls placed upon Alcoa personnel. Note additional General Rules.
- 3.4 Distribution:
- Conservator of Forests
  - Supt. Central Region Supt. Northern Region
  - O.I.C. Jarrahdale Division
  - O.I.C. Dwellingup Research
  - O.I.C. Northern Region
  - O.I.C. I & P Northern Region.
  - Alcoa
  - Issue to all Dwellingup O/S
  - Issue to all F.D. authorised visitors on entry.

*H. H. Vear*  
D.F.O.

GENERAL MINESITE RULES

1. Personal Protective equipment must be worn by all personnel on the minesite (except in the offices and amenities buildings).

SAFETY HELMET

SAFETY GLASSES

SAFETY BOOTS

Walk through visitors e.g. Forestry department personnel, must wear suitable footwear e.g. closed shoes.

2. During firing time all roads and tracks leading into the blast area are blocked by guards a safe distance from the blast site. A siren, situated at the crusher, commences sounding throughout the danger period.
3. Before working on or close to any unguarded moving part of the system (e.g. conveyor belts, apron feeders etc) all isolating switches controlling the electric drive motors must be opened and correctly tagged out, i.e. it is strictly prohibited to climb over or crawl under or view the conveyor from under the covers unless you have your personal tag on the isolating switch.

## II. GENERAL ROAD RULES

- 1) SPEED LIMIT of 60 kph except where signs indicate a lower speed. e.g. Workshop/Storage/Administration/Conveyor trace areas. Lower speed limits apply to some equipment under any conditions, see operating equipment rules.

You should maintain a minimum speed consistent with the general traffic flow. Remember that vehicles with a gross weight of 100 tonnes may be approaching from behind at 60 kph.

- 2) Mine Traffic rules apply to all vehicles driven in the mining areas. The rules are modelled as closely as possible to Road Traffic Authority rules to avoid confusion.
- 3) To operate any vehicle on the minesite it is necessary to possess the appropriate, RTA licence and on site driving permit to drive that equipment. On site driving permit not required for light vehicles at Del Park/Huntly.
- 4) Obey all traffic control signs. They apply to all vehicles.
  - Do not pass "Blasting - No Travelling" signs without the permission of the Blasting Foreman.
  - All major Production Haul Road intersections are marked with Give Way or Stop Signs preceding the intersection at Del Park/Huntly.
  - Restricted travel areas (crusher area), light vehicles access etc.
- 5) Overtaking is prohibited except in the following circumstances:-
  - Tracked equipment travelling close to the left hand side of the road.
  - Working graders.
  - Rubber tyred equipment (except haul trucks, water carts, low loaders) if in a position to be overtaken have pulled over and indicate that they may be overtaken. Equipment not required to stop.

Never overtake a haul truck unless it has stopped on the verge of the road.
- 6) Keep at least 30m behind other vehicles except slow moving vehicles which you can overtake safely. Also in loading pits keep at least 30 metres clear of operating loaders.
- 7) Movement in uncontrolled areas:-
  - All vehicles should give way to loaded trucks in the pit floor area.
  - Haul trucks are to give way to the left (being left hand drive) unless otherwise signposted.
  - All light vehicles are to give way to earth moving equipment unless otherwise signposted.

- 8) When stopping or parking in the vicinity of heavy equipment, you should remember that frequently the operator has only limited visibility around his machine. You should park or stop only in a position where you have clear eye to eye contact with the operator because only then is it safe to assume he can see you.
- 9) All vehicles should be parked in such a way that if all brakes fail, the transmission was in neutral and all implements clear of the ground, the vehicle would not move.
- 10) Seat Belts are to be worn by all operators, drivers and passengers in vehicles travelling on the minesite. It is not necessary to wear a seat belt when manoeuvring around the workshop area.
- 11) Tour buses must:-
- stay within 30 metres of escort vehicle.
  - maintain haul truck speeds when operating on haul roads being used for production.
  - only access working areas approved by the production foreman for their entry.
- 12) Visitors to site whether Alcoa or Non Alcoa must report to Security gate at Jarrahdale and Minesite Offices at Del Park/Huntly to notify minesite management of their presence on site and gain authorisation to enter the mining area.
- 13) Horns to be used to indicate intended movement:-
- One Blast - Engine Start (Heavy Equipment only)
  - Two Blasts - For Forward
  - Three Blasts - For reverse
- 14) Stopping in the Mining Area.
- On Haul Roads
- All personnel (except minesite employees) are prohibited from stopping on the haul roads (i.e. tour buses, forestry, MWB, Alcoa visitors etc.) unless otherwise authorised by a minesite production Foreman.
- In Other Areas (Pits, Parking and Rehabilitation areas etc).
- Stop in a position that will not interfere with the safe operation of any mining equipment in the area. Park in a position that is visible to all equipment operating in the area.
  - Ensure that the vehicle is parked in such a way that if the brakes failed the vehicle would not move.

### III. OVERTAKING ON HAUL ROADS

Overtaking of equipment on mine haul roads is restricted due to the restricted operator visibility from heavy equipment travelling on the mine haul roads.

Overtaking on mine site roads is prohibited except in the following circumstances:-

1. Overtaking a tracked machine which must keep to the left of haul road.
2. Overtaking a grader grading a haul road.
3. Overtaking a broken down vehicle. The operator of the vehicle to assist the traffic control or area to be adequately signposted with warning signs, for safe passing of the vehicle until it can be moved from the travel way.
4. All rubber tyred vehicles (except haul trucks, water carts, low loaders), if in a position to be overtaken must pull over to the left of the haul road and indicate that they may be overtaken. The equipment is not required to stop.
5. Equipment under tow and/or being escorted when they have stopped and the escorts have signalled that it may be overtaken.

In all instances the operator of the overtaking vehicle is responsible for the safe completion of the manoeuvre. Under no circumstances is the speed limit of 60kph to be exceeded to complete an overtaking manoeuvre.

# VIII. 'BLASTING - NO TRAVELLING' SIGNS

These signs are intended to:-

- (a) Prevent vehicles (other than those directly involved in charging operations) from coming within 15m of a charged area.
- (b) Close off roadways and access tracks leading to a charged area prior to blasting.

If you are unsure of the situation regarding any 'Blasting-No Travelling' sign, and there are no members of the powder crew working in the immediate area to ask, contact the Blasting Foreman by radio; if this proves unsuccessful, make enquiries at the mine office and ask for assistance in locating him.

## TRAVELLERS REMEMBER

- 1. DO NOT pass 'Blasting-No Travelling' signs in a vehicle when these signs are used to define a charging work area.
- 2. DO NOT pass 'Blasting-No Travelling' signs used to close off roads during blasting under any circumstances.
- 3. DO NOT smoke within 15m of charging operations.
- 4. Information on blasting areas and times is always available at the Security Gate House.

## IX. OFF ROAD LIGHT VEHICLE OPERATING AND PARKING

### GOOD OPERATING PRACTICE OFF ROAD

1. Drive a safe speed suitable to the surface conditions. When driving over caprock remain in first gear.
2. When driving over caprock and rough ground be aware that the steering wheel may be forced from your grip and spin uncontrollably. Therefore, do not hook your arm or thumbs through the steering wheel.
3. The nature of heavy equipment operations off road is generally congested by nature. Therefore, if you are not directly involved in the operations, stay clear of all equipment routes and work areas. If you are required to enter the operating area, ensure that all personnel in the area are aware of your presence and keep a safe distance (30m minimum) from any mobile equipment.

To identify off road operations into which someone may inadvertently stray, warning signs will be erected on access routes into the area.

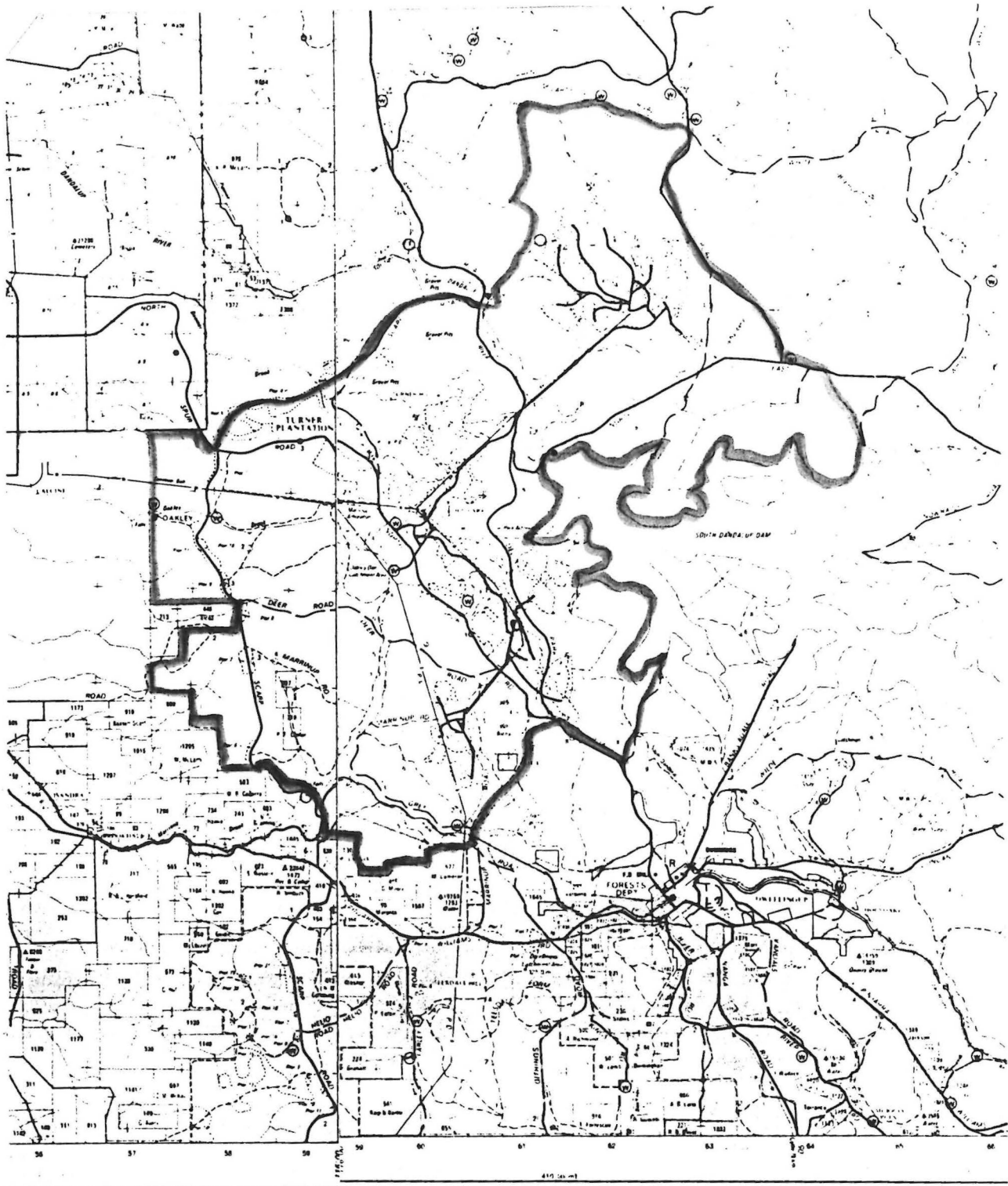
4. Do not travel on any prohibited Forestry tracks denoted by the Forestry Department "Prohibited Entry" signs or tracks not signposted with green signs.

### PARKING OF LIGHT VEHICLES

1. Light vehicles should be parked in such a way that if their park brake failed the vehicle would not move.
2. It is always good practise to leave a parked vehicle in gear, cross slope, with the wheels turned into a windrow if possible.
3. A parked vehicle should be left away from the flow of traffic in such a way that it is visible to all equipment operating in the area.
4. When parking a light vehicle at night in the mining pits, park off the pit access and in a position visible from all heavy equipment in the area. Side lights should be left on if main lights would cause a hazard. Do not park behind lighting plants as you will not be visible from other equipment.



MINING INFLUENCE ZONE



TO ADJOINING SHEETS



PINJARRA

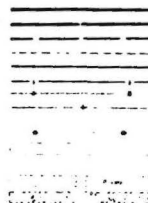


Projection: Universal Transverse Mercator, Zone 117, June 58  
Vertical Datum: Australian Height Datum (Mean Sea Level)  
Horizontal Datum: Australian Geodetic Datum 1984



B. J. BIGGS  
CONSERVATOR OF FORESTS  
APRIL 1979

- Scout Road
- 1st Class Road
- 2nd Class Road
- 3rd Class Road
- Highway
- Powerline
- Settlement Boundary
- Land District Boundary
- Block Boundary
- 1:10 Topographic Line
- Private Property
- Water Course
- Pin Plantation
- Mount Area



KEY TO