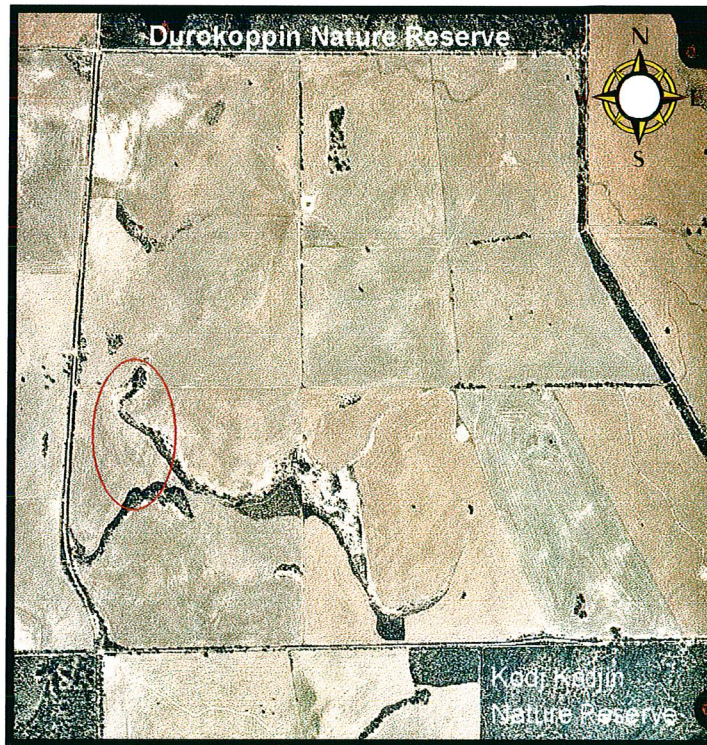


# Revegetation case study

## Breakaway Revegetation

Kit & Eileen Leake  
Kellerberrin / Trayning Road



NOT TO SCALE

### Landscape Goal

To reconstruct habitat within the Wallatin Creek Catchment by protecting areas of high conservation value and then to build outwards from these with the aim of providing adequate habitat and maximising the connectivity of the landscape.

### Nature Conservation – Objective(s)

To increase the size of the remnant and the corridor width of the breakaway vegetation between the Reserves. This provides a corridor that is 60m wide and no greater than 2km between the reserves.

### Sustainable Agriculture - Objective(s)

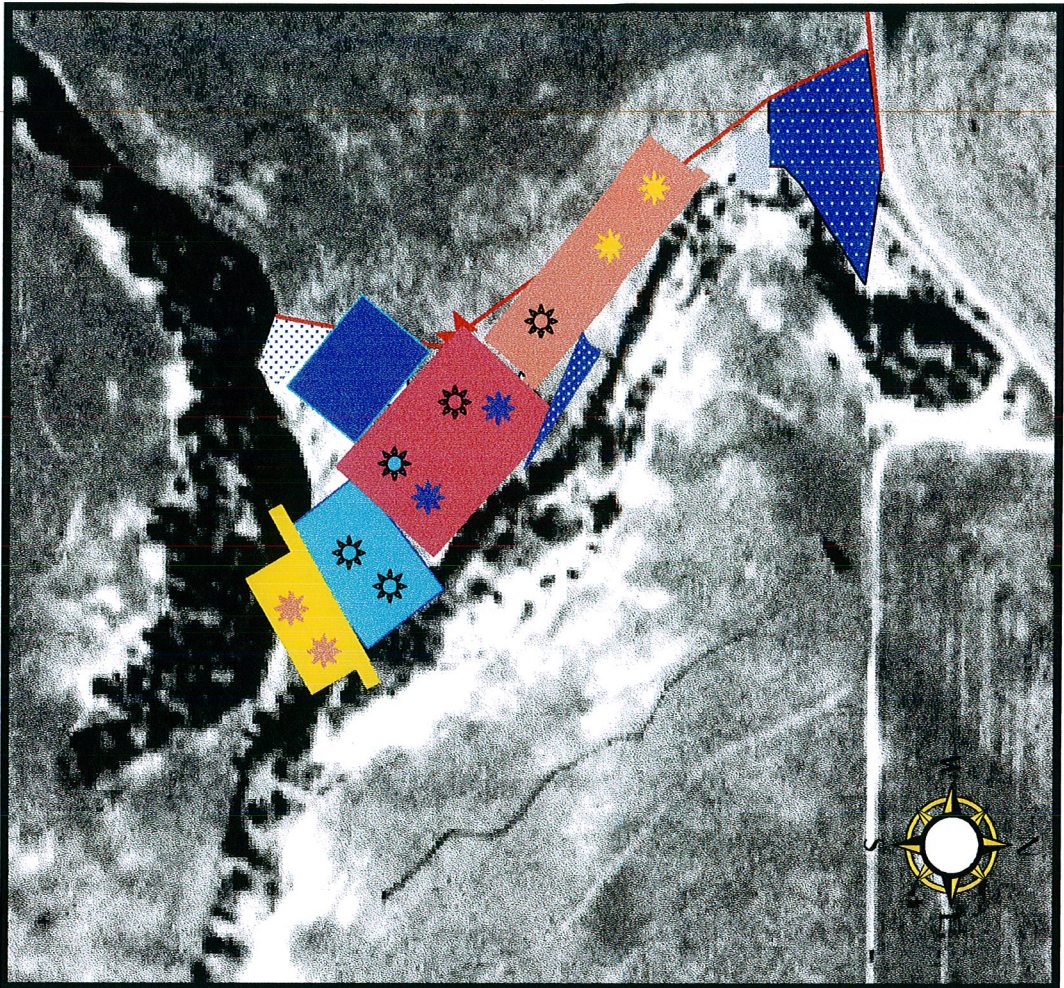
Eliminate surface water runoff from breakaway, increase use of annual rainfall in a high recharge area and improve ease of cultivating adjacent cropping land.

29 November, 2000

Draft only



# BREAKAWAY REVEGETATION DESIGN



- Access track
- Fenceline
- Cement bunker
- Gateway

29/11/2000

250 m

400 m

## White Gum Woodland

4 ha = 4928 seedlings

- 1020 Eucalyptus capilliosa /17
- 180 E. loxophleba /3
- 300 E. sheathiana /5
- 900 E. subangusta /15
- 126 Acacia acuminata, /3
- 60 A. hemiteles /1.5
- 120 Allocasuarina campestris/2
- 60 Calothamnus quadrifidus /1
- 104 Hakea lissocarpa /2
- 660 Melaleuca uncinata /11
- 60 M. coronicarpa /1
- 3590

\* ripped at low spacing  
\* cultivated (scattered)  
\* planted on seedbed.

Patch 10 x 10m (120/patch)

- 378 Acacia acuminata, /3 patches (9 trays)
- 240 Allocasuarina campestris /2
- 120 Calothamnus quadrifidus /1
- 120 Hakea lissocarpa /1
- 240 Melaleuca uncinata /2
- 240 M. coronicarpa /2
- 1338**

## Planting Patterns (Trays)

- \* Melaleuca coronicarpa 1, M. uncinata 5, E. subangusta 6 trays =12
- \* E. loxophleba 3, Acacia acuminata 2, A. hemiteles 1.5, E. capilliosa 4, Mel. uncinata 3 = 13.5
- \* Calothamnus quadrifidus 1, E. sheathiana 5 = 6
- \* E. capilliosa 6, E. subangusta 5, Hakea lissocarpa 1, Acacia acuminata 1, M. uncinata 3 = 16
- \* E. subangusta 4, E. capilliosa 7, H. lissocarpa 1, Allocasuarina campestris 2, = 14

## Direct Seeding 937g

- 250g Eucalyptus capilliosa
- 200g Acacia acuminata
- 20g A. hemiteles
- 40g A. acuriaria
- 37g Senna nemophila
- 200g Allocasuarina acurtivalvis
- 94g A. campestris
- 51g Melaleuca radula
- 1g Hakea lissocarpa
- 38g H. scorparia
- 6g H. trifurcata

## Direct Seeding 567g

- 27g Acacia 44
- 20g A. lasiocalyx
- 200g Allocasuarina acurtivalvis
- 100g Allocasuarina campestris
- 5g Hakea erecta
- 22g H. incrassata
- 74g H. platysperma
- 6g Melaleuca cordata
- 8g M. leptospermoides
- 100g Isopogon divergens

hand break

Veronica  
mic

- Thicket
- 96g Allocasuarina acurtivalvis
- 18g Melaleuca uncinata