

A photograph of a kangaroo in a rocky, arid landscape. The kangaroo is positioned in the center-left of the frame, facing forward. It has a greyish-brown body with a lighter patch on its chest. The background consists of reddish-brown rocks and sparse vegetation. The overall tone of the image is warm and naturalistic.

North West Cape – Ningaloo Reef World Heritage Nomination

Final Report
World Heritage
Consultative
Committee

1. World Heritage Consultative Committee

Implementation of policy commitments to nominate the North West Cape and Ningaloo Reef area for inscription on the World Heritage List

Three members of the World Heritage Consultative Committee appointed in June 2004

Two key tasks:

- Consult with key stakeholders on the proposal to nominate the area
- Provide advice to Government on a preferred boundary



2. Consultative Process

The World Heritage Consultative Committee has met with all major stakeholders and other organisations, and attended a meeting with residents & ratepayers in Exmouth

All stakeholders were provided with a detailed briefing paper which included a set of questions to guide the preparation of written submissions

The Committee has received numerous written submissions

The Committee has compiled a comprehensive report covering **ALL** issues raised in the consultative process with an analysis of the issues



3. Justification for Inscription

To be inscribed on the World Heritage List, a site has to be
...of outstanding universal value

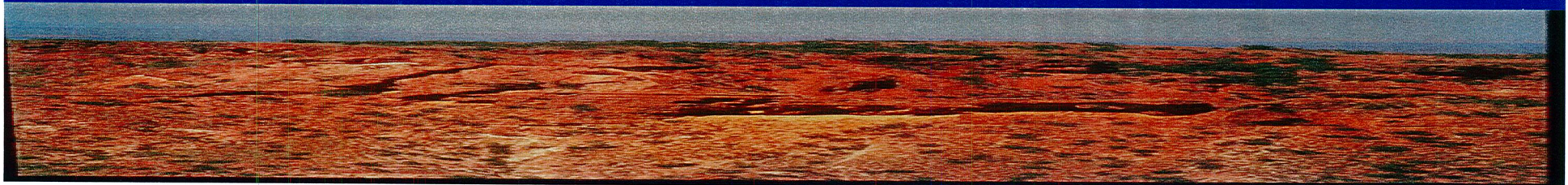
The Convention defines both cultural and natural criteria

A natural property must also fulfil the conditions of integrity
i.e. the values for which it is inscribed will be protected in
the long-term



- i. be outstanding examples representing major stages of earth's history, including the record of life, significant on-going geological processes in the development of landforms, or significant geomorphic or physiographic features [geoevolutionary history]; and/or
- ii. be outstanding examples representing significant on-going ecological and biological processes in the evolution and development of terrestrial, fresh water, coastal and marine ecosystems and communities of plants and animals [biological evolution]; and/or
- iii. contain superlative natural phenomena or areas of exceptional natural beauty and aesthetic importance [outstanding beauty]; and/or
- iv. contain the most important and significant natural habitats for in-situ conservation of biological diversity, including those containing threatened species of outstanding universal value from the point of view of science or conservation [biodiversity].

conditions of integrity are defined for each criterion



5. Boundary to be delineated on the basis of values

The boundary must include all elements necessary to express the *outstanding universal value* of the place

- Must be free from adverse effects of development or neglect
- Must be of an adequate size

AND

- Must meet conditions of integrity



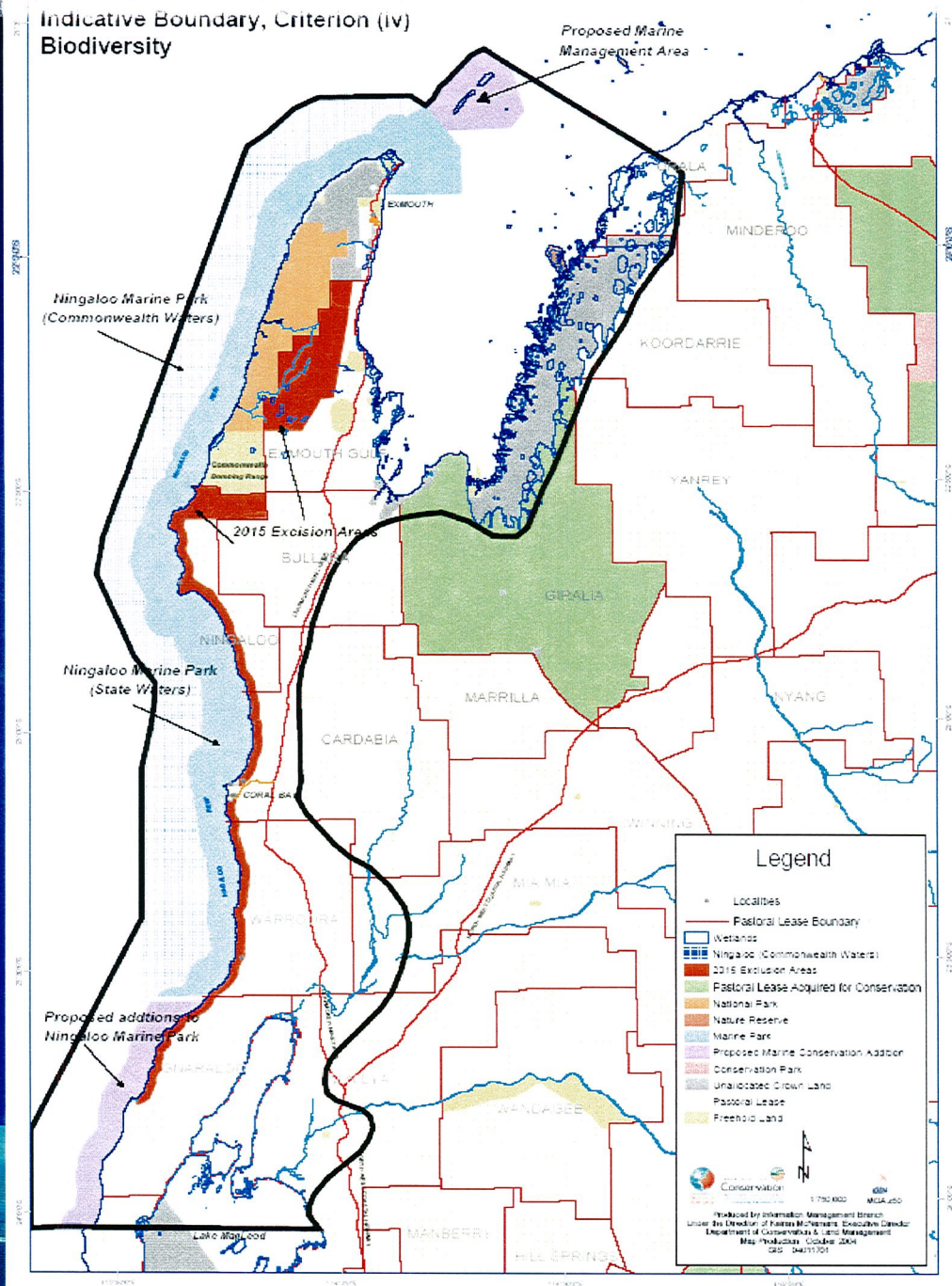
6. Defining the Boundary

The Committee has considered a range of boundary options, including the Study Area originally defined by the Minister, and assessed each one against the World Heritage criteria

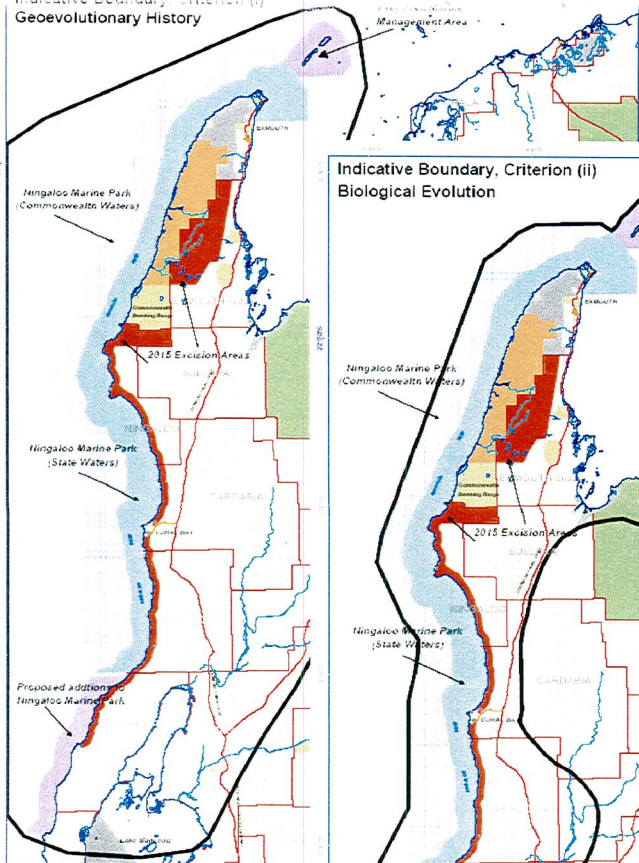
The Committee has also taken into account the known and/or probable responses of stakeholders to each boundary option



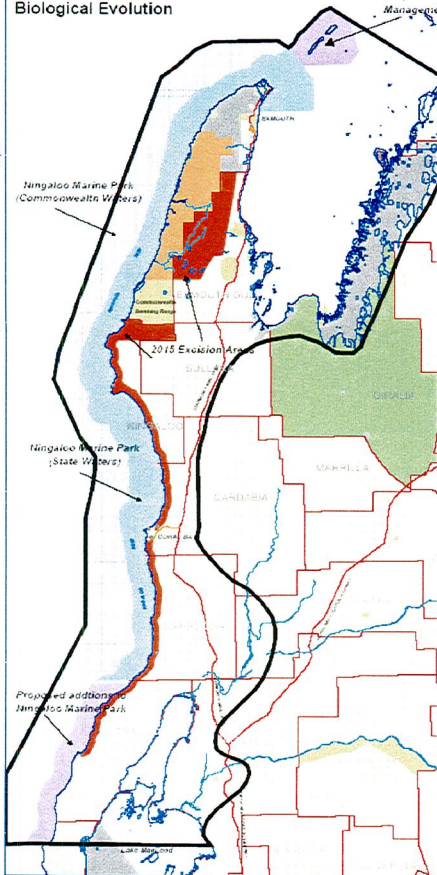
Indicative Boundary, Criterion (iv)
Biodiversity



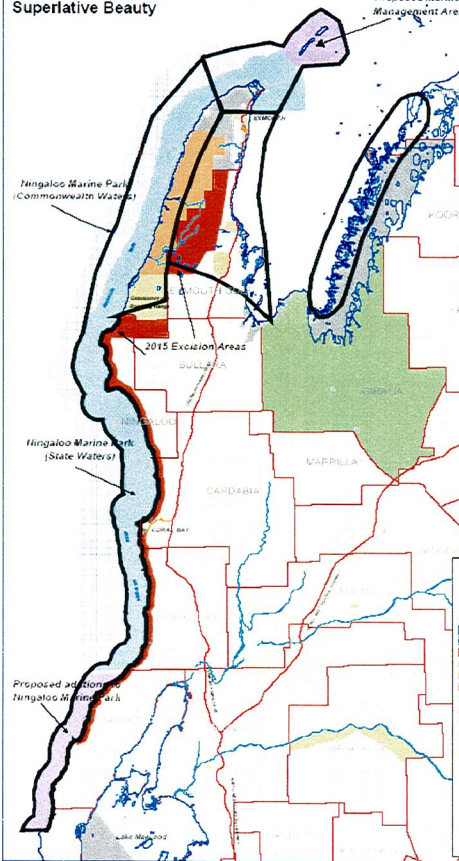
Indicative Boundary, Criterion (i)
Geoevolutionary History



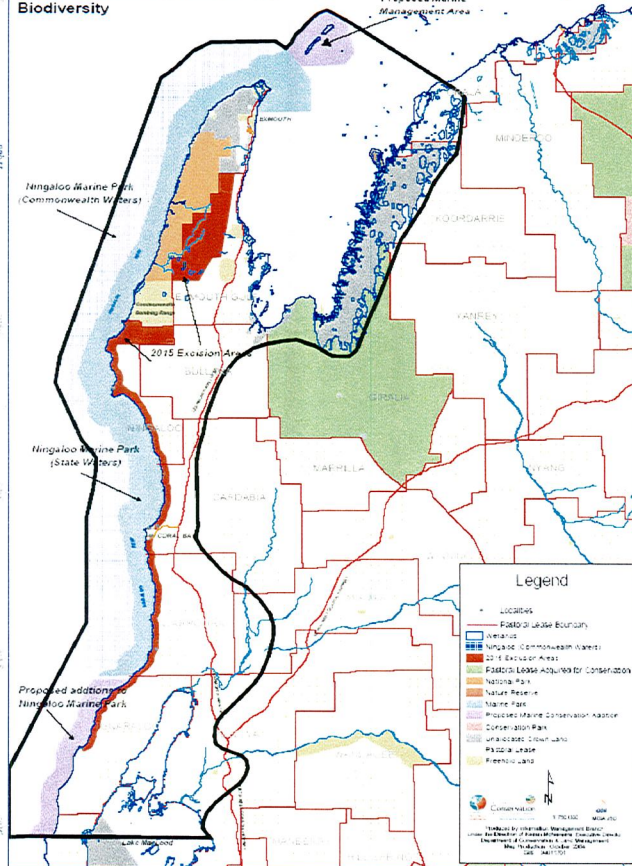
Indicative Boundary, Criterion (ii)
Biological Evolution



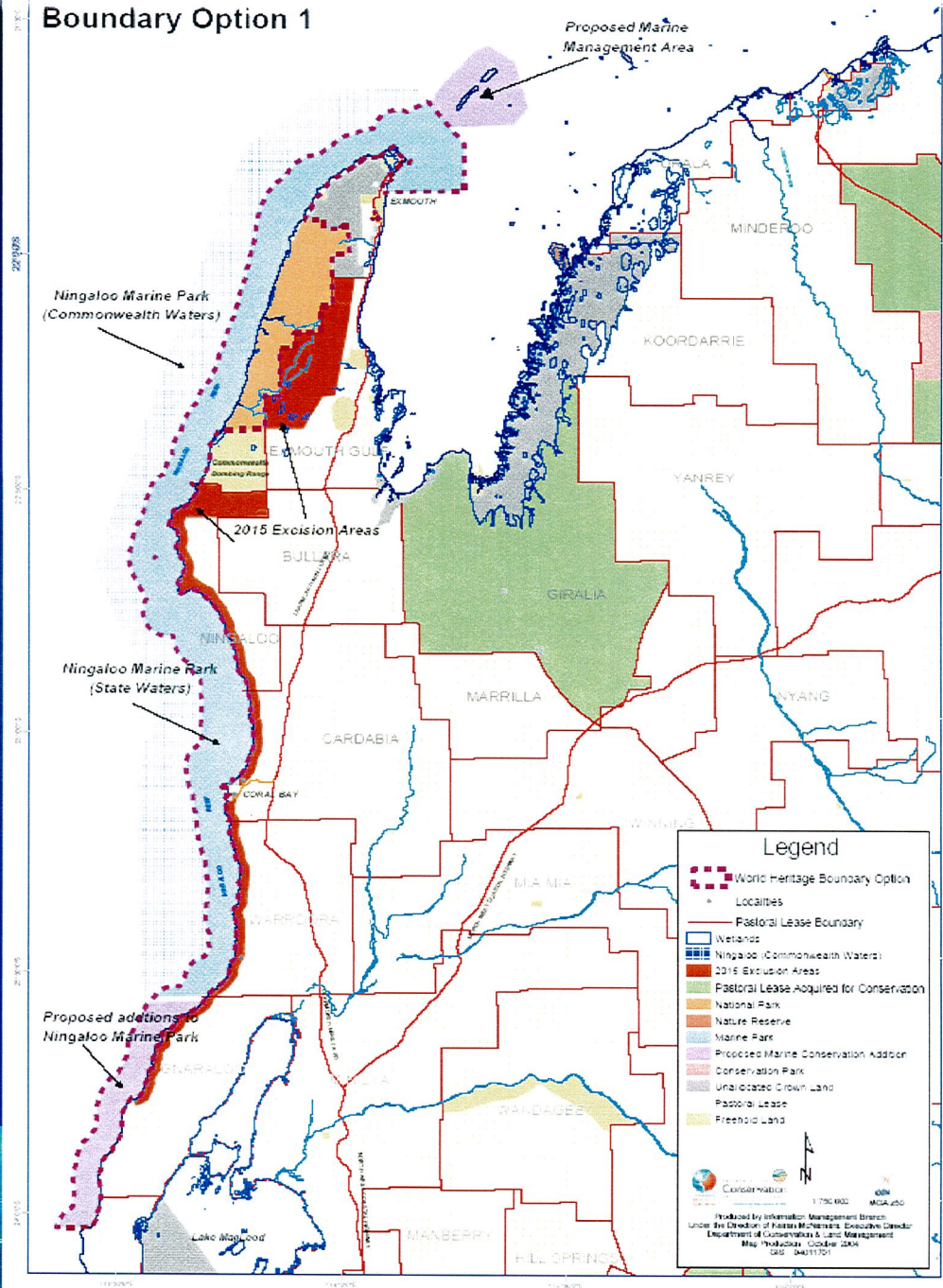
Indicative Boundary, Criterion (iii)
Superlative Beauty



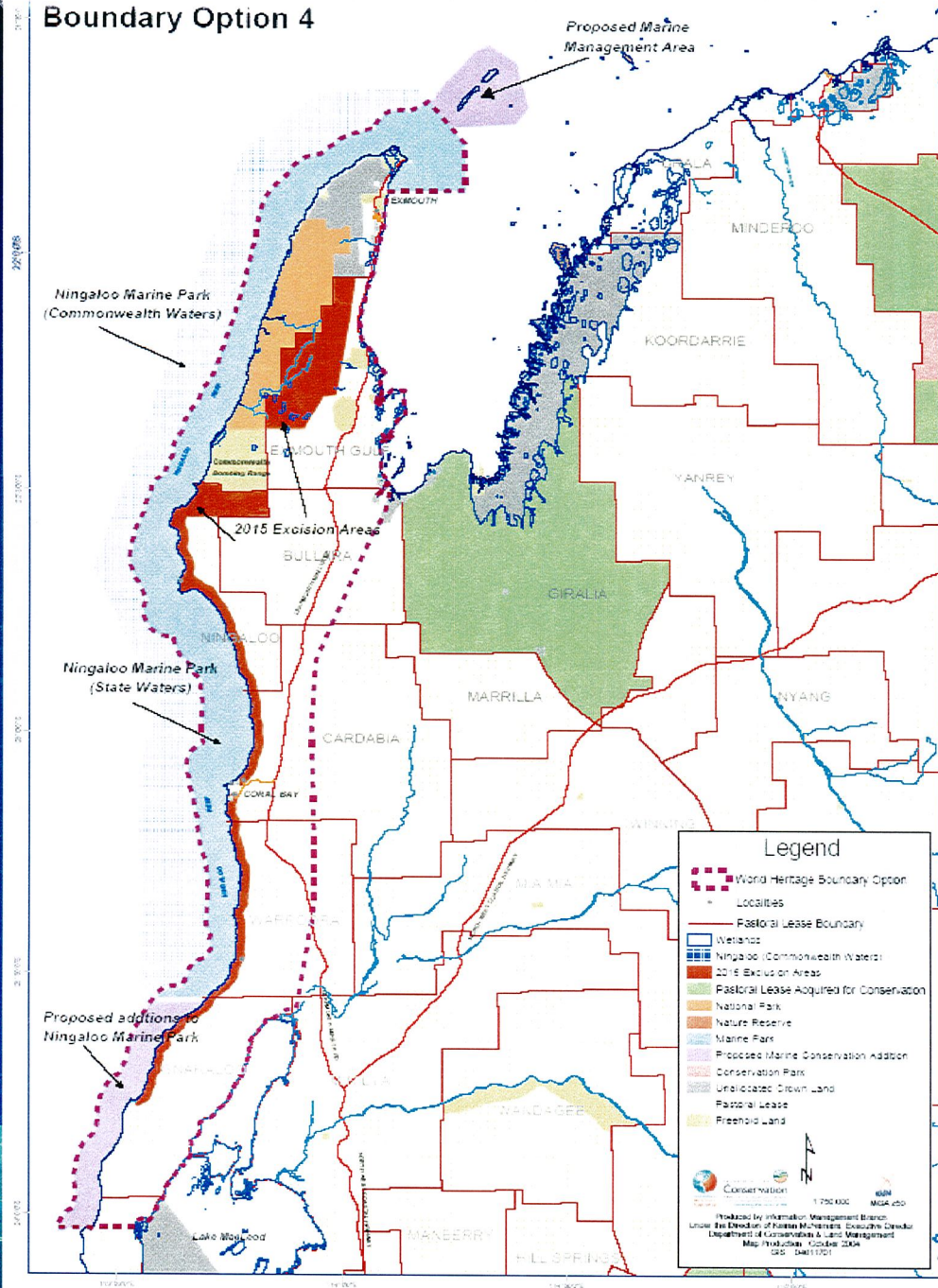
Indicative Boundary, Criterion (iv)
Biodiversity



Boundary Option 1

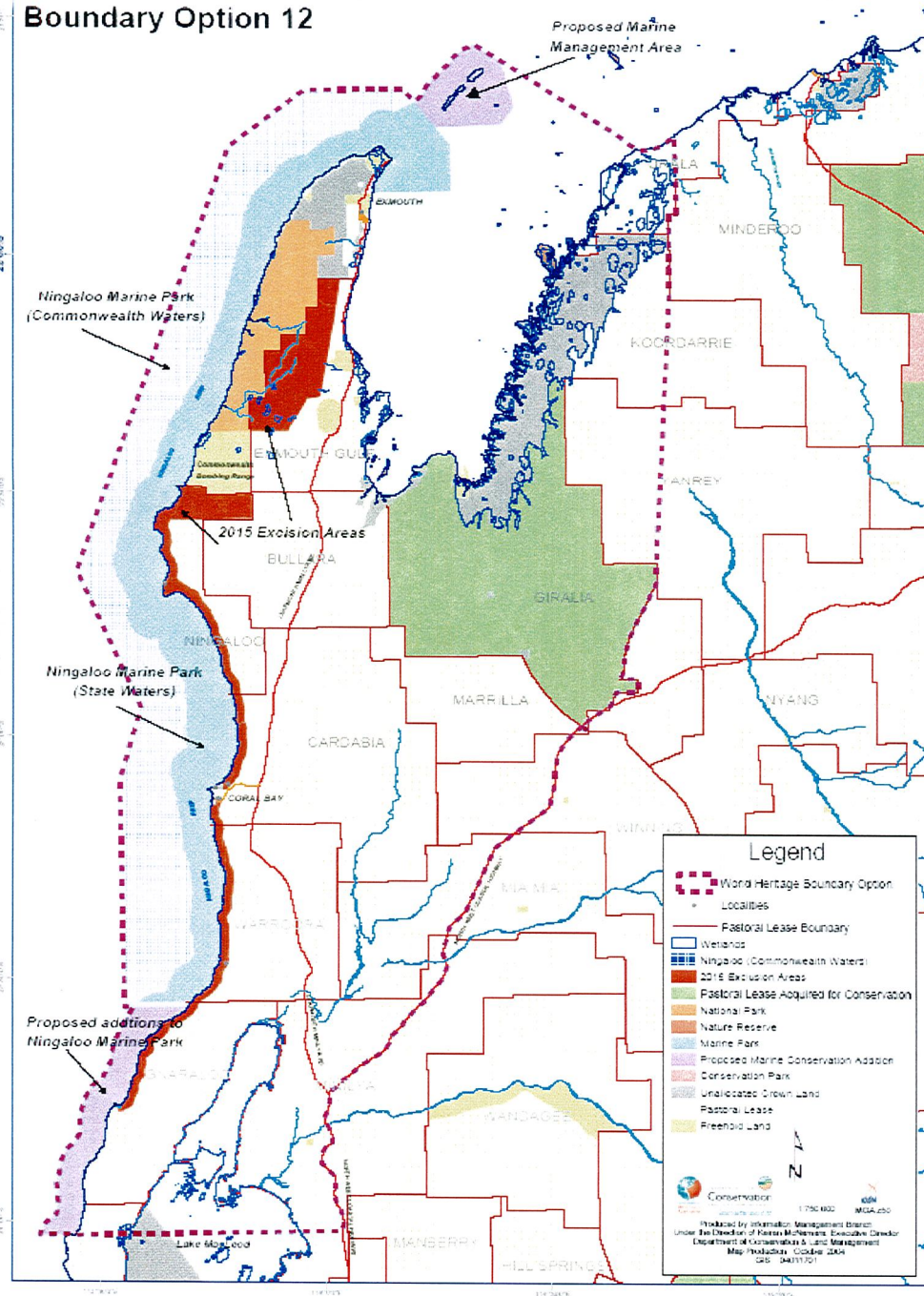


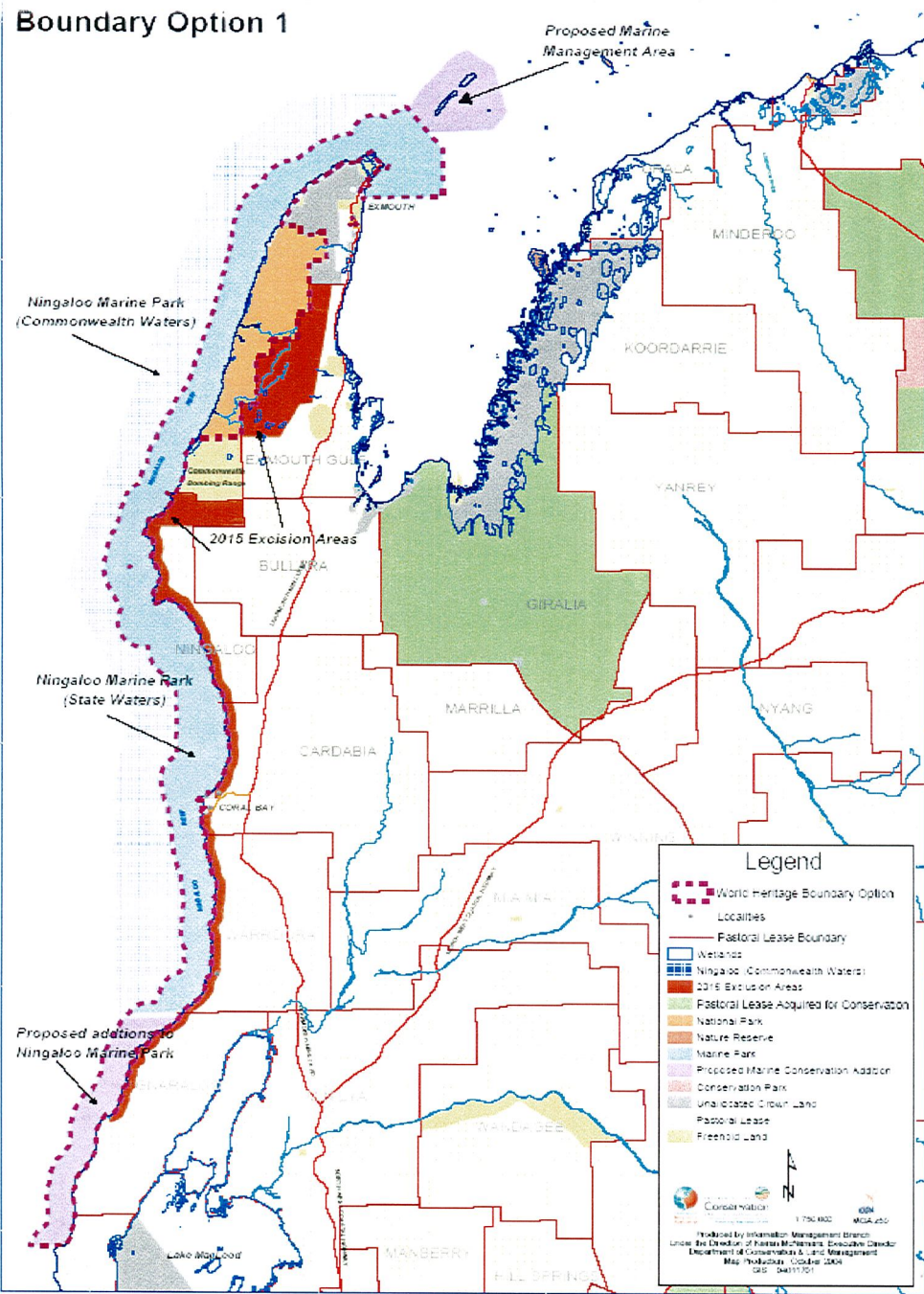
Boundary Option 4



The Study Area defined by the Minister for the Environment at the start of the consultation process

Boundary Option 12





13. Evaluation of Boundary Option 1

- Only possible to nominate under Criterion (ii) (Biological evolution), possibly Criterion (iv) (Biodiversity) ie not (i) geoevolutionary history or (iii) superlative beauty)
- Would fail to meet the requirements of conditions of integrity for either criterion (ii) or (iv) – does not include catchment onto the reef and does not include the entire reef system and the entire anchialine system (as well as values for other criteria)
- Most stakeholders would support a nomination based on these boundaries; notable exceptions are the coalition of conservation NGOs, the Conservation Commission, NPNCA, EPA, Department of the Premier and Cabinet all of whom would strongly prefer a more inclusive nomination, and particular petroleum exploration and production companies who would only support it conditionally.



Optimal Boundary

Proposed Marine Management Area

Ningaloo Marine Park (Commonwealth Waters)

2015 Exclusion Areas

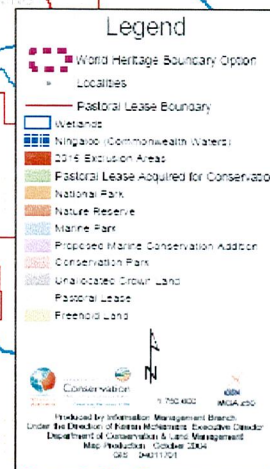
Ningaloo Marine Park (State Waters)

Proposed additions to Ningaloo Marine Park

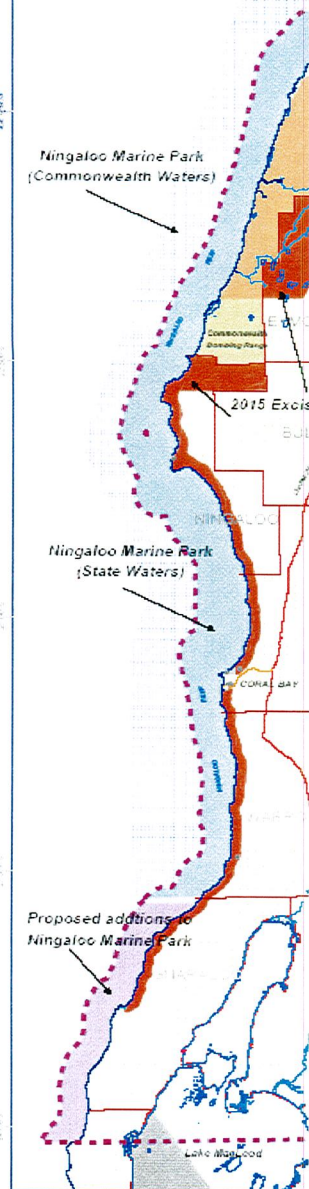
Legend

- World Heritage Boundary Option
- Locality
- Federal Lease Boundary
- Wetlands
- Ningaloo (Commonwealth Waters)
- 2015 Exclusion Areas
- Pastoral Lease Acquired for Conservation
- National Park
- Nature Reserve
- Marine Park
- Proposed Marine Conservation Addition
- Conservation Park
- Unallocated Crown Land
- Pastoral Lease
- Freehold Land

Produced by Information Management Branch
Under the direction of Robert McPherson, Executive Director
Department of Conservation & Land Management
Map Production: October 2004
GCS: GDA94



Optimal Boundary



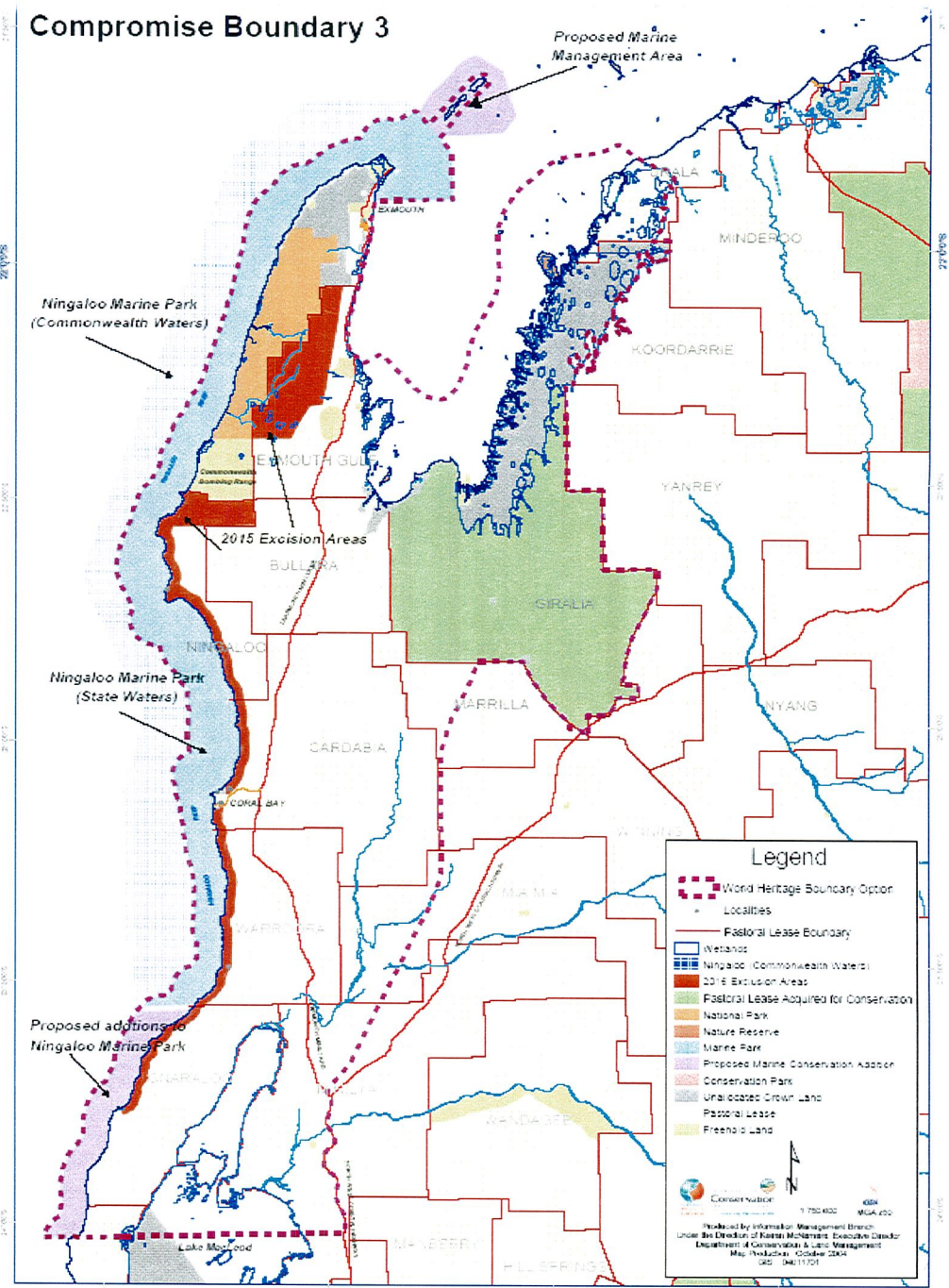
Compromise Boundary 1



Compromise Boundary 2



Compromise Boundary 3



19. Risk Assessment & Management Matrix

A matrix has been prepared identifying risks associated with each boundary option (Optimal, Compromise Options 1-3) in terms of:

- Likelihood of the nomination not succeeding i.e. being deferred pending outcomes of negotiations on boundaries, management;
- Likelihood of adverse impacts on the development of the State, adverse response from stakeholders & community; and
- Other risks

And

- possible management responses to minimise each risk



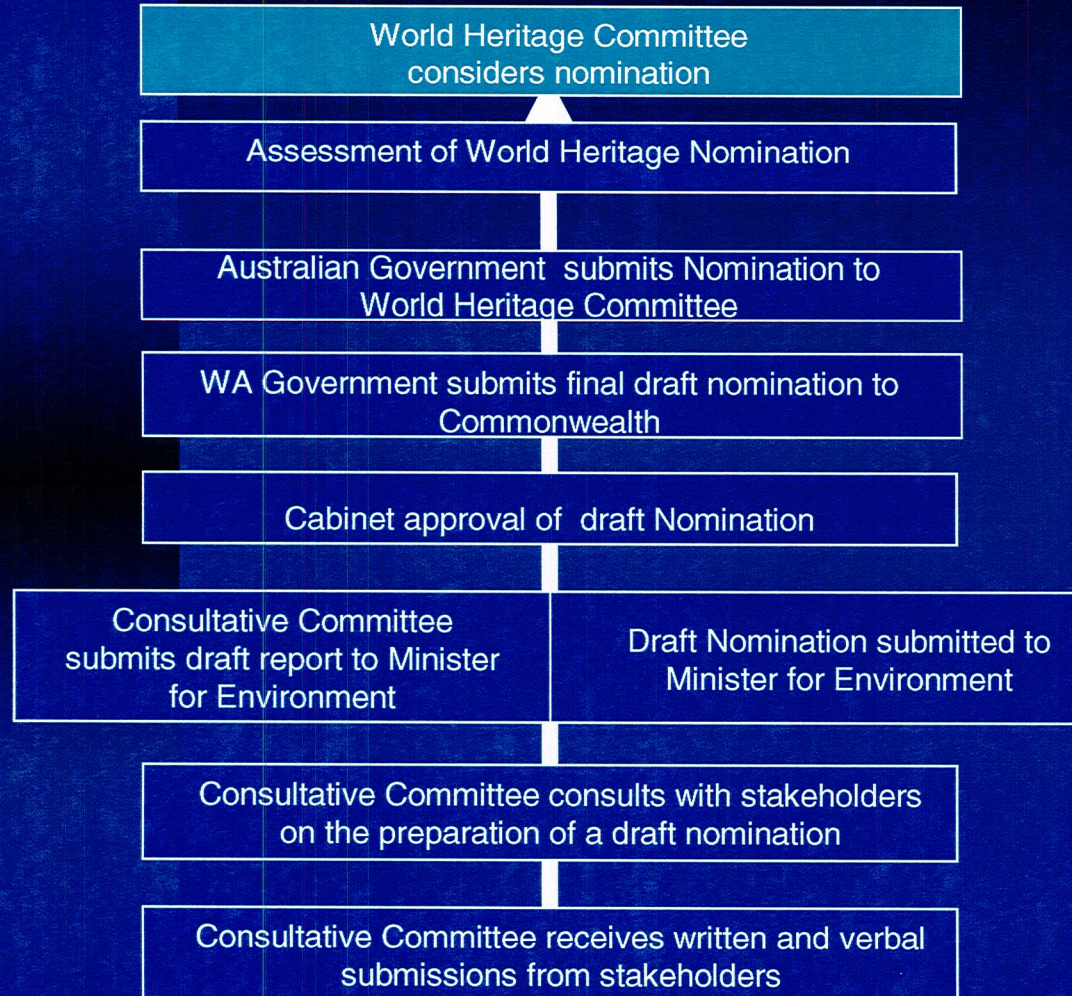
20. Other approaches/ issues

- Implementing a comprehensive communications strategy
- Ensuring adequate resourcing for management of the proposed World Heritage property
- Excluding the Town of Exmouth using the boundary for the Exmouth-Learmonth Structure Plan
- Implementing a Fish Habitat Protection Area over any portions of Exmouth Gulf that are to be included within the nomination
- Making arrangements whereby the petroleum industry can have access for exploration (subject to conditions) for up to 10 years and production is permitted (again, subject to strict environmental conditions)
- Name of proposed World Heritage property



World Heritage Nomination Process

Major steps involved



Deadlines

Mid-2006

2005

1 February 2005

1 December 2004

Mid-November 2004

Early September 2004

August 2004

July 2004
(preferably by 15 July 2004)