

Vegetation Management Plans

David Mickle
Technical Officer (Management Plans)
Roadside Conservation Committee
T: 9334 0173



The Roadside Conservation Committee

Vegetation Management Plans

- Introduction to Management Plans
- Roadside management objectives
- Road reserve components
- Legislation and permits
- Actions
- Impacts
- Managing impacts
- Working with management plans



The Roadside Conservation Committee

What is a Management Plan?

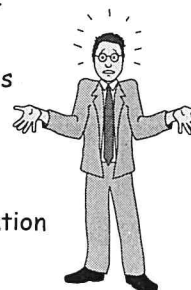
- Document outlining:
 - What is to be managed?
 - How it will be managed?
 - Who will manage it?



The Roadside Conservation Committee

Why have a Management Plan?

- Clear direction for staff
- Outline works procedures
- Manage impacts
- New law protects vegetation



The Roadside Conservation Committee

Roadside Management Objectives

- Protect
 - Native vegetation
 - Rare or threatened flora
 - Cultural and heritage values
 - Community assets from fire
- Enhance
 - Native vegetation communities
 - Fauna habitats



The Roadside Conservation Committee

Roadside Management Objectives

- Maintain
 - Safe function of road
 - Native vegetation communities
 - Fauna habitats and corridors
 - Visual amenity and landscape qualities
 - Water quality



The Roadside Conservation Committee

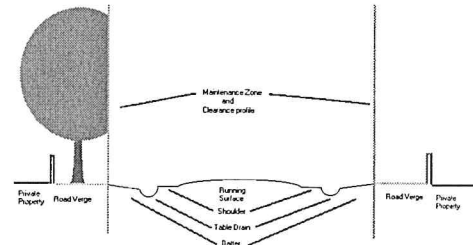
Roadside Management Objectives

- Minimise
 - Land degradation
 - Spread of weeds and vermin
 - Spread of soil borne pathogens
 - Risk of impact from fire
 - Disturbance during installation and maintenance of service assets



The Roadside Conservation Committee

The Road Reserve



The Roadside Conservation Committee

The Road Reserve

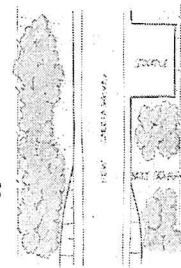
- Two zones:
 - Maintenance zone
 - Road Surface
 - Shoulders, drains and batters/back slopes
 - Road Verge
 - Edge of batter to property line



The Roadside Conservation Committee

Maintenance Zone

- Clearance profile for safety
- Has a defined width
- Designate stockpile sites
- Includes drains



The Roadside Conservation Committee

Road Verge

- Contains native vegetation
 - Linking the landscape
 - Wildlife corridors
- Roads one chain wide (20.1m)
 - Can be wider
- Verge both or one side of road



The Roadside Conservation Committee

Legislation

- Type of clearing permits
 - Area Permit- for a specific area, up to 2 years
 - Purpose Permit- for particular purpose with conditions imposed up to 5 years



The Roadside Conservation Committee

Conditions of Permits

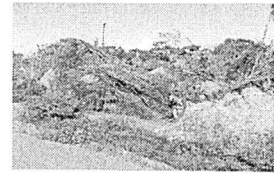
- Management plans
- Codes of practice/policy e.g.
 - Main roads policy
 - www.mainroads.wa.gov.au/environment_policy.html
- Commitment to conservation
 - Restoration of cleared area
 - Commitment to manage



The Roadside Conservation Committee

Actions

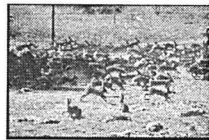
- Grading
- Moving materials
- Slashing
- Spraying
- Lopping
- Disposing of materials
- Moving machinery
- Parking vehicles



The Roadside Conservation Committee

Threats to vegetation

- Weeds
- Dieback
 - http://www.calm.wa.gov.au/science/dcc_splash.html
- Fire
- Feral Animals
- Human



The Roadside Conservation Committee

Impacts

- Permanent change to vegetation community
- Space for weeds
- Encourage fire hazard
- Destroy habitat
- Cause erosion
- Encourage feral animals
- Change in water quality



The Roadside Conservation Committee

Managing Impacts

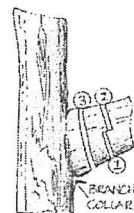
- Avoid "tidying up" vegetation
- Work within maintenance zone
- Park vehicles in a cleared area
- Designate a turn-around point
- Keep vehicles clean
- Grade onto the road not into the verge
- Spray weeds on batter not in bush



The Roadside Conservation Committee

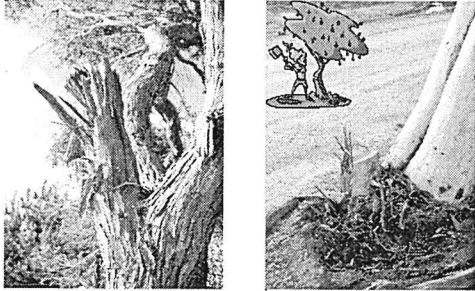
Target Pruning Method

1. The undercut
2. The uppercut (to remove the branch)
3. The final trim



The Roadside Conservation Committee

Examples of Bad Pruning



The Roadside Conservation Committee

Target Pruning Method

- Avoids unsightly and dangerous branches
- Limits infection from pathogens
- Avoids removal of trees
- Trim branches where they overhang



The Roadside Conservation Committee

Where are the prunings are going?

- Cannot mulch and return to verge
- Branches used as a seed source
- Larger hollow logs retained for habitat
- Chips for rehabilitation (elsewhere)
- Burn away from native vegetation



The Roadside Conservation Committee

Operating Gravel Pits

- Must have a definite life span
- Plans for rehabilitation
- Rehabilitation applies to access tracks
- Locate on already cleared land
- Pits should be clearly marked out
- Must not be located on the roadside



The Roadside Conservation Committee

Working with Management Plans

- Read the document
- Understand how it affects your work
- Talk to your manager/supervisor
- Think about what you are doing



The Roadside Conservation Committee