

DEPARTMENT OF CONSERVATION AND LAND MANAGEMENT

Form CLM 80B

Department of Conservation  
and Land Management  
25 NOV 1987  
COMO, W.A.

From: MANJIMUP INVENTORY OFFICE  
To: EXECUTIVE DIRECTOR COMO, MANAGER MAPPING SERVICES,  
ATTENTION: DES MUIR  
Your Ref: A5.6.  
Our Ref: MR KIM PHILLIPS-JONES  
Enquiries: 097 711988  
Phone:  
Subject: PINE PLOTS - ALBANY DISTRICT

In reference to your letter 7th August 1987.

Interpreters Todd Brittain and Colin Hooper spent five days interpreting the photos covering the area requested and a further two days field checking their interpretations. Enclosed you will find a summary of their findings.

The location of the plots are marked on the photos and in turn plotted onto the relevant 1:50,000 plans - both the plans and photographs are forwarded to you under separate cover.

Five of the pine plots are not covered by the Mount Barker project 83041 photography but can be located on 1:25,000 project 850195 (photocopies enclosed) and are plotted on the 1:50,000 Torbay plan.

Trusting this work is to your satisfaction.

*P. Stirling*

SECTION MANAGER  
P.D. STIRLING  
Per: K PHILLIPS-JONES

20th November 1987,

K-PJ:SA

Distribution:  
D/F Terry Maher - Albany Office. ✓

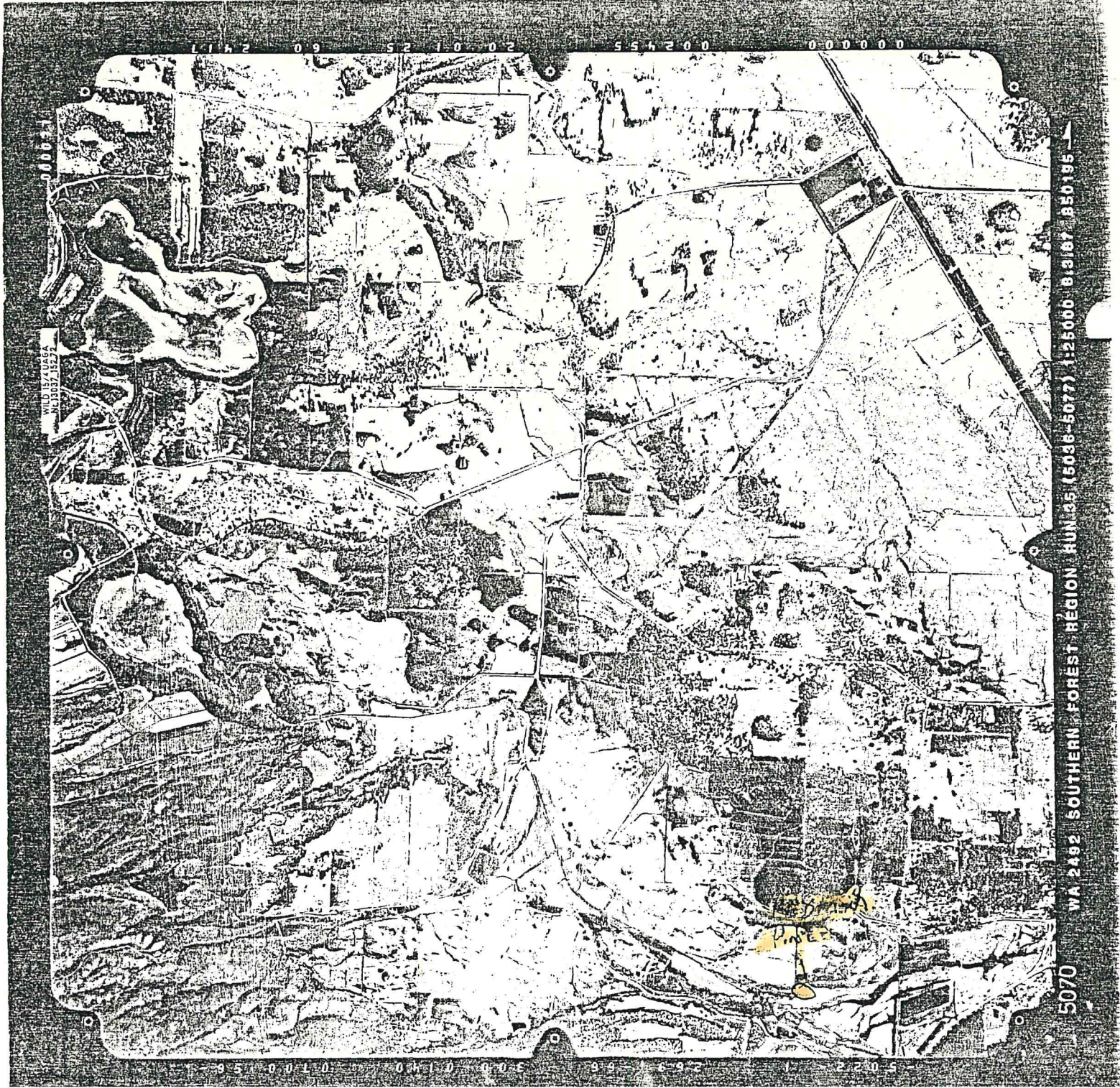
*Jake Smith - Eves*  
*Gavin Eлли - Rookite - plot register.*  
*Add this info to plot register*  
*.? down in connection with DOCS ALBANY*

Run No	Photo No	Location No	Map	Tree Species		Area (Ha) (approx)	Topographical Position			Comments
				Pine	Euc		Lower Slope	Mid Slope	Upper Slope	
14	5217	197	DENMARK	Prodiata		3.0		✓		LARGE ESTABLISHED PLOT
14	5218	2019	DENMARK		E. globulus	1.0		✓		
14	5219	↑ 26565	DENMARK		E. globulus	0.5		✓		
14	5220	DENMARK AG. H. SCHOOL	DENMARK	P. pinaster	Euc?	1.0		✓		
14	5224	5802, 27	REDMOND	Prodiata		0.5		✓		2 PLOTS
14	5225	5893	REDMOND	Prodiata		0.5		✓		
14	5226	524	REDMOND	Prodiata		0.5		✓		
14	5229	GLENDON TOWNSHIP	CUSTER HRC	Prodiata		40.0				LARGE PLOT
14	5231	YAKAMIA BRIDGE	CUSTER HRC	P. pinaster		0.25				
14	5233	6454	PROCESSEY	Prodiata		0.7				
14	5233	2516	PROCESSEY		Euc?	2.25				
14	5232	3354	PROCESSEY		Euc	1.0		✓		
35	5072			Prodiata		3.0			✓	NO MAP COVERAGE AVAILABLE PHOTO-COPIES ENCLOSED
35	5072			P. pinaster		0.2			✓	NO MAP COVERAGE AVAILABLE PHOTO-COPIES ENCLOSED
35	5070			Prodiata		0.5			✓	NO MAP COVERAGE AVAILABLE PHOTO-COPIES ENCLOSED
35	5075			MIXED		2.0		✓		NO MAP COVERAGE AVAILABLE PHOTO-COPIES ENCLOSED
35	5075	MAY RD		Prodiata					✓	BELOW BOTTOM OF FRAME 5075 NO PHOTO COVERAGE

TRAN NO	PHOTO NO	LOCATION NO	MAP	TREE SPECIES		AREA (Ha) (approx)	TOPOGRAPHICAL POSITION			COMMENTS
				PINE	EUC		LOWER SLOPE	MID SLOPE	UPPER SLOPE	
12	5161	5794	OYSTER HBR	P. radiata		0.25	✓			✓
12	5163	5426	OYSTER HBR	P. radiata		0.6	✓			✓
12	5163	5426	OYSTER HBR	P. radiata		0.5	✓			✓
12	5163	6764	OYSTER HBR	P. radiata		0.2	✓			✓
12	5163	4991	TMC PEOPLES BAY	P. radiata		1.0	✓			✓
12	5163	6543	TMC PEOPLES BAY	P. radiata		1.0	✓			✓
12	5164	6532	TMC PEOPLES BAY	P. radiata		2.5	✓			✓
12	5164	6532	TMC PEOPLES BAY	P. radiata		2.4	✓			✓
12	5163	6764	TMC PEOPLES BAY	P. radiata		1.0	✓			✓
13	5187	241+469	OYSTER HBR	P. radiata		3.0	✓			✓
13	5187	893	OYSTER HBR	P. radiata		0.08	✓			✓
13	5187	893	OYSTER HBR	P. radiata		0.05	✓			✓
13	5187	21	OYSTER HBR	P. radiata		1.5	✓			✓
13	5187	1331	OYSTER HBR	P. radiata		2.0	✓			✓
13	5187	3524	TMC PEOPLES BAY	P. radiata		0.5	✓			✓
13	5191	5747	OYSTER HBR	P. radiata		0.1	✓			✓
										✓

THESE TWO PLOTS ARE JOINED TOGETHER

Plot No	Photo No	Location No	Map	Tree Species		Area (Ha) (approx)	Topographical Position			Comments
				Pine	Euc		Lower Slope	Mid Slope	Upper Slope	
8	5003	2035	FOREST HILL	P. radiata		0.25	✓			x
8	5006	323	FOREST HILL	P. radiata		0.6	✓			x
8	5007	719	FOREST HILL		EUCS?	8.0	✓			PLANTED FOR SALT REHABILITATION
9	5038		M <sup>r</sup> MANYPEAKS	P. radiata		2.0	✓			NO MAP COVERAGE AVAILABLE
9	5059	1097	M <sup>r</sup> BARKER		EUCS	1.0	✓			x
9	5059	32	M <sup>r</sup> BARKER		EUCS	0.1	✓			x
10	5084	2163	FOREST HILL	P. radiata		0.5		✓		x
10	5084	2165	FOREST HILL	P. radiata		0.5	✓			x
10	5085	331	FOREST HILL	P. radiata		0.75	✓			x
11	5119		NCCRUBUP?	P. radiata		1.08	✓			NO MAP COVERAGE AVAILABLE
11	5119	5785	PORONGURUP	P. radiata		0.4	✓			x
11	5119	4489	OYSTER HBR	P. radiata		0.3	✓			x
11	5119	5799	OYSTER HBR	P. radiata		0.75	✓			x
11	5119	5808	OYSTER HBR	P. radiata		0.375	✓			x
11	5129	2177	FOREST HILL	P. radiata		0.375		✓		x

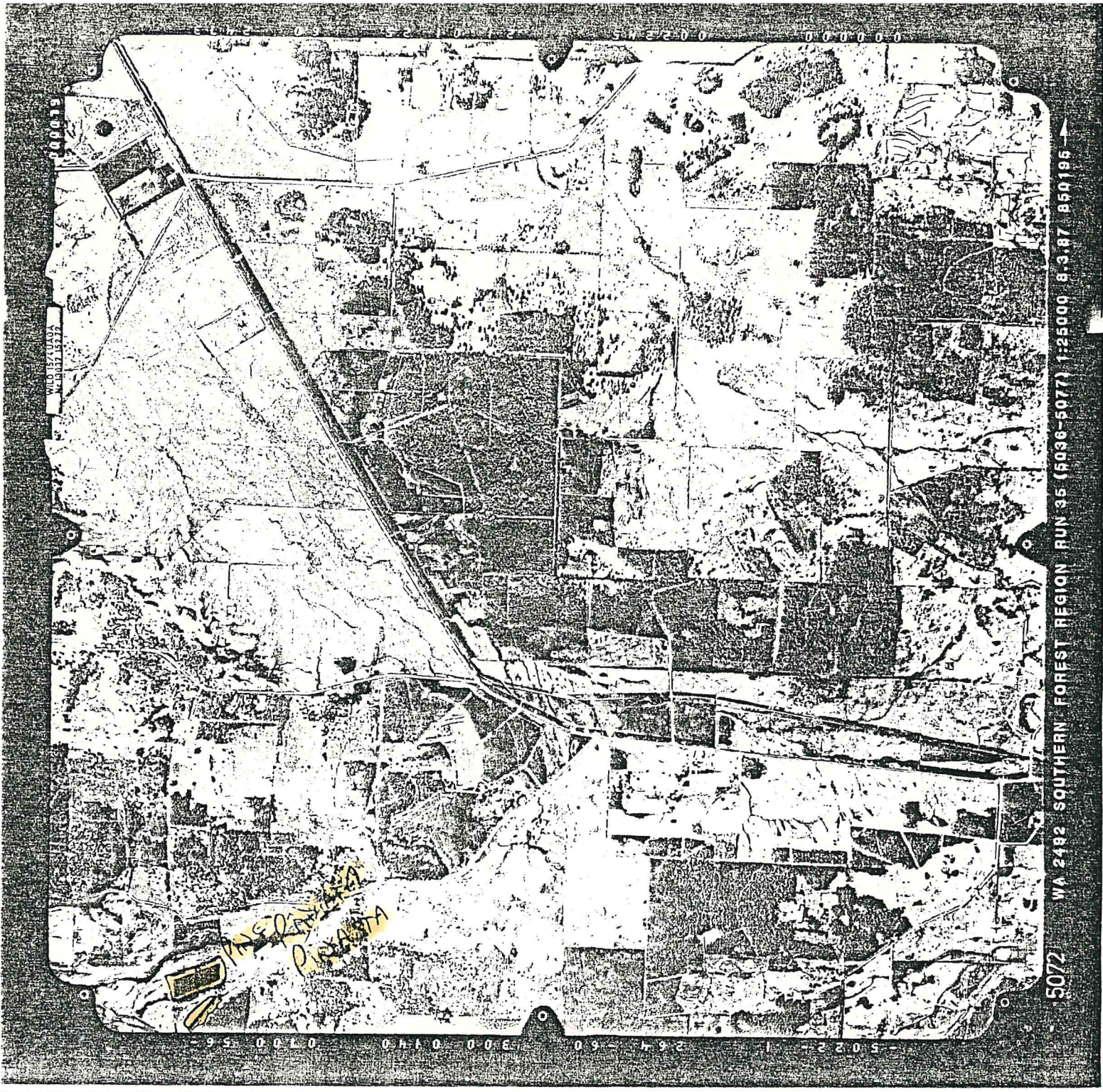


W.D. 13713297  
100071

5070 WA 2492 SOUTHERN FOREST REGION HUN 25 (5036-5077) 1:25000 813187 850195

000000 002455 200125 200177

5070 5036 5077 0100 0150 0200 0250



WILSON ROAD  
W. 10000 15000

00000 15000

5000 10000 15000 20000 25000 30000 35000 40000 45000 50000

5072 WA 2482 SOUTHERN FOREST REGION RUN 35 (5036-5077) 1:25000 8.3.87 850196

000002

WILD IN ALABAMA  
NL 30037 15272



RADIAN  
PINES ON  
TOP OF HILL ON TRAIL

MIXED  
PINES

5075 1/4 1x82 SOUTHERN FOREST REGION RUN 35 (5036-5077) 1:25000 8.3.87 850196