

University Perspective - What's Needed from CALM for Best Outcomes for Students

Sue Moore



MURDOCH
UNIVERSITY
PERTH, WESTERN AUSTRALIA



What do Universities do?

- Teach
- Research & consulting
- Community service



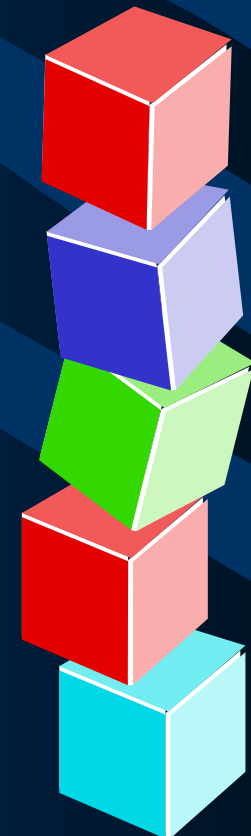
Who's Who in Western Australia

- Murdoch University
- Edith Cowan University
- Curtin University
- The University of Western Australia
- The University of Notre Dame
- *CALM Tourism and Recreation Research Reference Group*
- *CRC for Sustainable Tourism*



Types of Research

- Student-centered research:
 - research project (individual/group)
 - coursework project
- ‘Academic’-centered research:
 - grants
 - contracts
 - sabbatical
- ‘Mercedes to VW’ spectrum of research possibilities



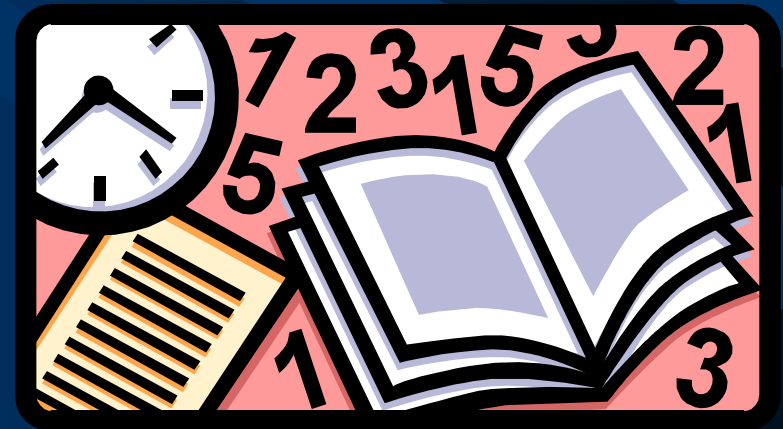


Student-Centered Research

- Research by an individual student:
 - honours (9 months fulltime)
 - Masters coursework (9 months @ 12 hrs/wk)
 - 4th year project (9 months @ 12 hrs/wk)
 - PhD (3 yrs fulltime)
 - MPhil (2 yrs fulltime) - increasingly rare
- Research by a group of students:
 - 4th year project (3-4 students)

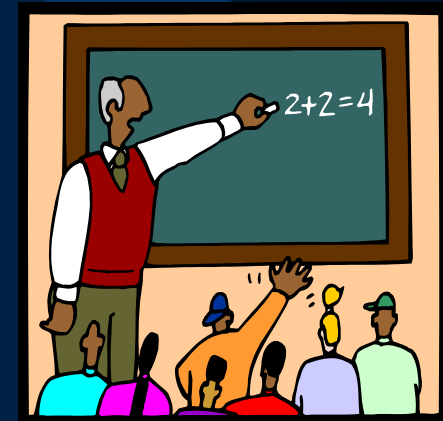
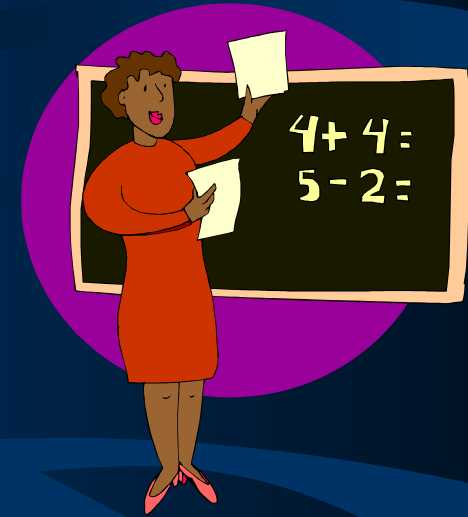
Student-Centered Research (cont.)

- Honours - well-defined question, uses prior knowledge, discrete data collection, involves thinking
- PhD - larger but still focused project, multiple parts, data collection over 1+ years, original contribution
- 4th year projects - tightly organised and run, very applied



'Academic'-Centered Research

- Grants:
 - from government (e.g. CALM)
 - from Commonwealth granting body
 - from industry
- Contracts = consulting
- Sabbatical = secondment

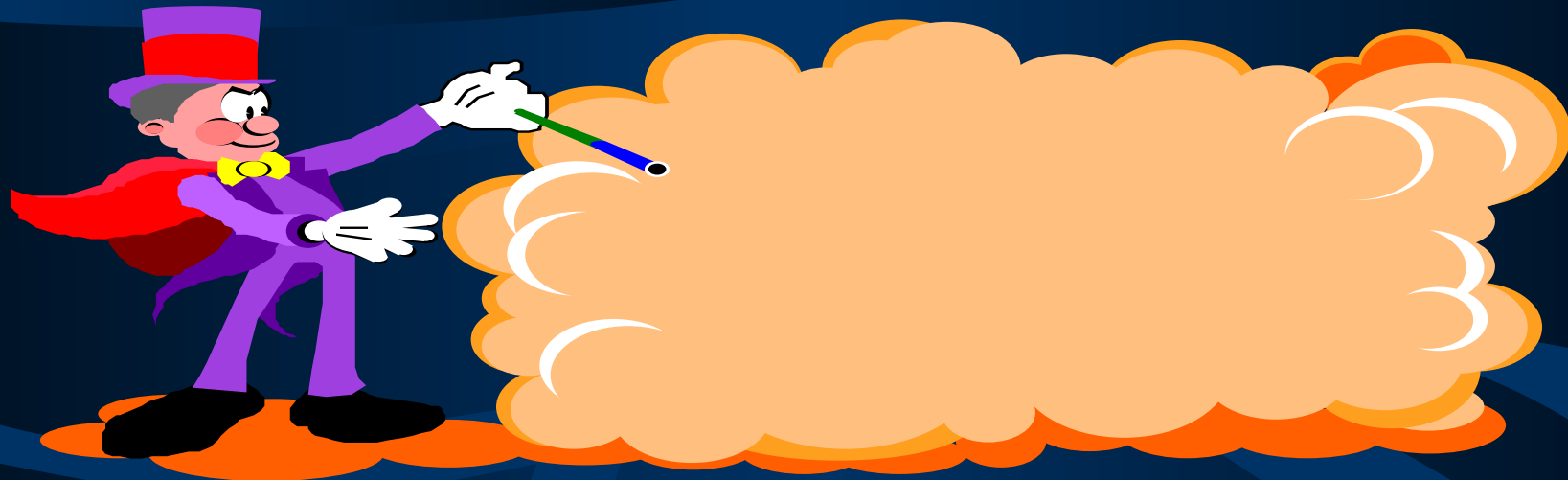


'Academic'-Centered Research (cont.)



- Grants - longer-term (3 mths+), research & outcome focus, results applicable beyond WA - research assistant(s) & academic time
- Contracts - short-term, outcome-focused - academic &/or research assistant
- Sabbatical - 3-6 mths, research & outcome focus - academic

'What is Research?



- Building on previous knowledge
- Clearly defining a problem (i.e. a research question) & then trying to answer it
- Explaining & justifying methods used
- In applied research, providing outcomes useful for managers

What are 'Best Outcomes' for Students?

- Project that matches academic & lifestyle interests
- Within their comfort zone
- Project that can be finished
- Project that helps them get the best possible mark
- Networking that helps get a job



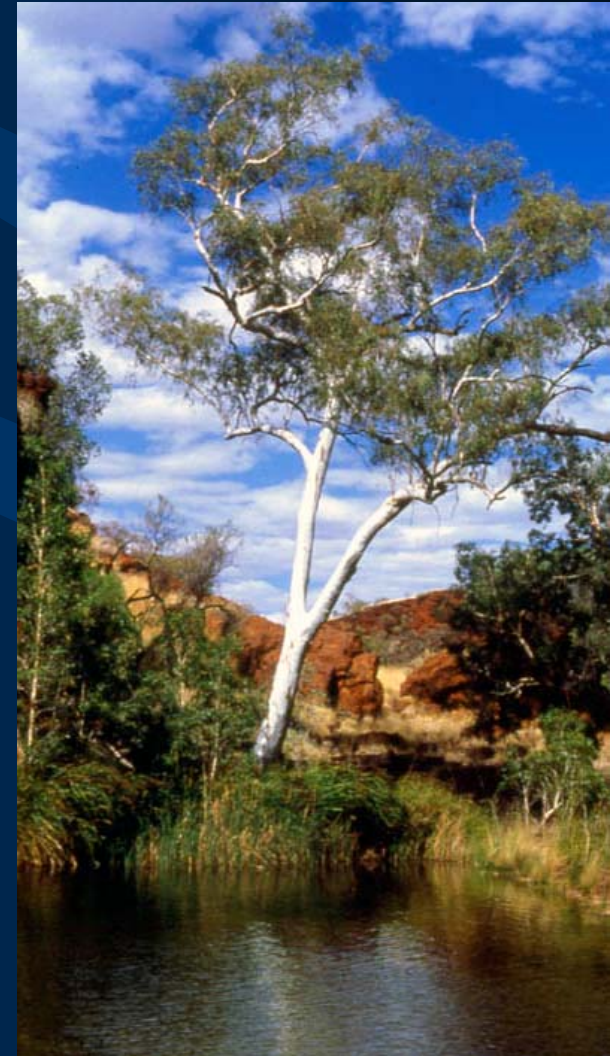
What are 'Best Outcomes' for Academic Supervisors?

- Project matches current research interests
- Project attracts good research student
- Project completed by student
- Journal article an output from project
- Project helps student get a job
- Project develops collaborative opportunities



What are 'Best Outcomes' for CALM?

- Access to overseas & interstate thinking/practice
- Answers to question(s) & better defined questions
- Location-specific answers
- Opportunity to step back & think about how things are going/how to do things better



How to Get 'Best Outcomes' for Students



- Co-supervision
- Contact people in regions &/or district
- Take into/assist in the field (esp. with data collection)
- Logistical support (e.g. transport, accommodation, office space, phone)
- Clear, regular communication

How to Get 'Best Outcomes' for Students (cont.)

- Optimising input to student's project:
 - defining research question (what is "the problem")
 - helping to collect data
 - reading the results & discussion
 - reading the draft thesis/
examining



How to get the 'Best Outcomes' for CALM

- Clearly define research question with student & supervisor
- Understand project scope
- 'Assist' with field work
- Read results & discussion
- Clear, regular communication with student & supervisor



Conclusions



- Student projects help answer recreation & tourism management questions
- Partnership approach of university (academic & student) & CALM based on clear, ongoing communication most effective
- Students need intellectual & practical input from CALM to get the best outcomes for all involved