

# Walking into Bell Creek

The Bell Creek gorge and falls are dramatic landscape features of the King Leopold Range.

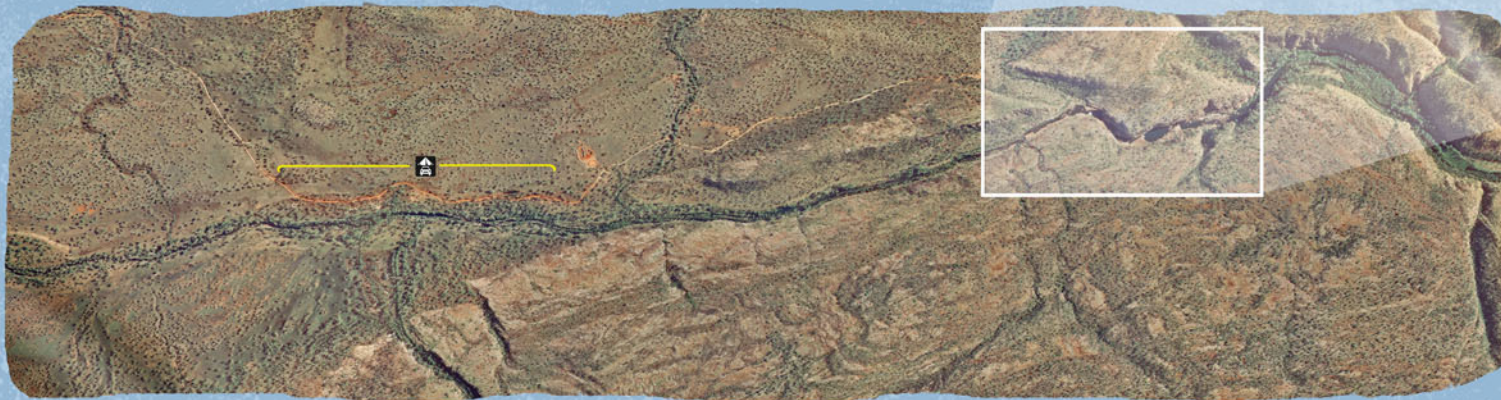
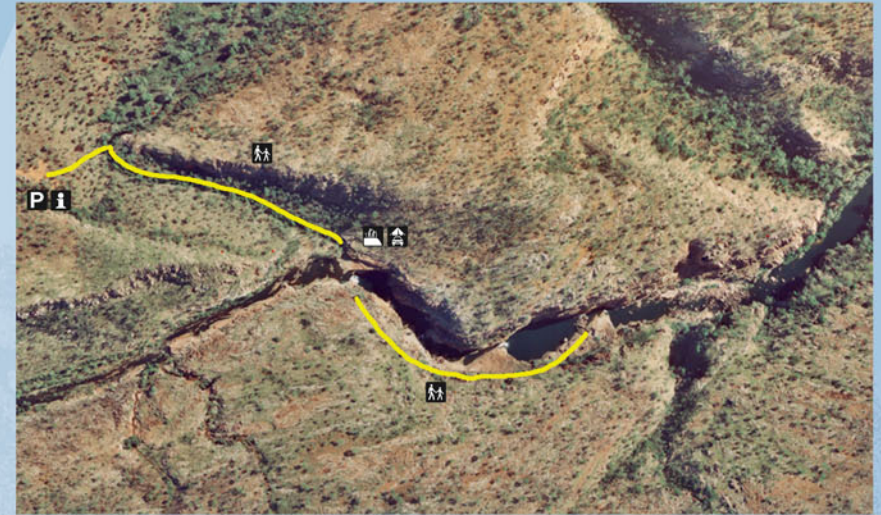
The King Leopold Range is the watershed of the Lennard River flowing to the south-west and Bell Creek that flows into the Isdell River and onto Walcott Inlet to the north-west. The wet season sees large quantities of water cascading down the falls.

## Bell Gorge

Take the 2km return walk from here to Bell Creek and on to just above the falls to view the gorge and waterfalls.



**Cliff Risk:** The cautious can continue on to cross the creek and descend to the pools below. The track is steep and rocky in places and water washed rocks can be wet and slippery.



## Bell Creek

Bell Creek is lined with large River Red Gum (*Eucalyptus camaldulensis*) and Wild Plum (*Nauclea orientalis*) trees. Look for Freshwater Mangrove (*Barringtonia acutangula*), White Dragon tree (*Sesbania formosa*) with the very large white flowers and the Ironwood tree with the fissured, corky bark (*Erythrophleum chlorostachys*) that also favour the moister soil near the creek.



Dramatic gorges ... cascading waterfalls ... walk on in

