



Conserving biodiversity and creating sustainable community benefits in the Midwest Region

Achievements, priorities and issues ...

Indigenous liaison

Community involvement

Visitor access and safety

Management and recreation planning, IMGs

Resource protection

GMS and CAR expansion

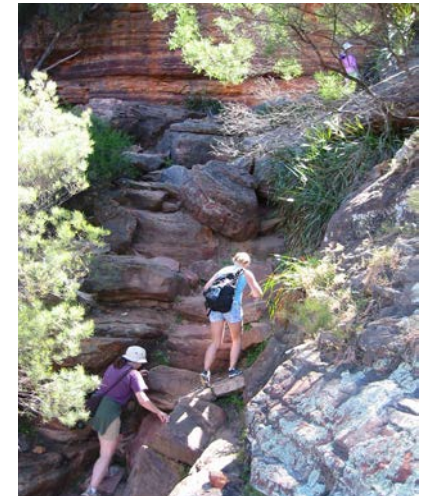
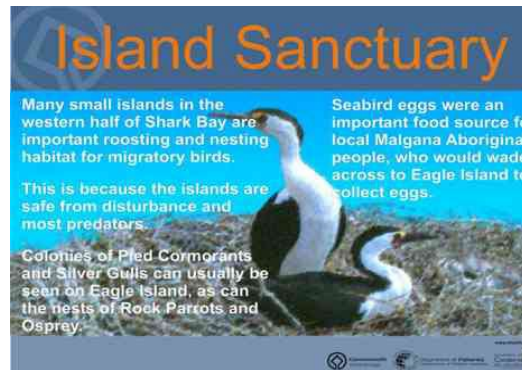
Catchment recovery

Salinity strategy

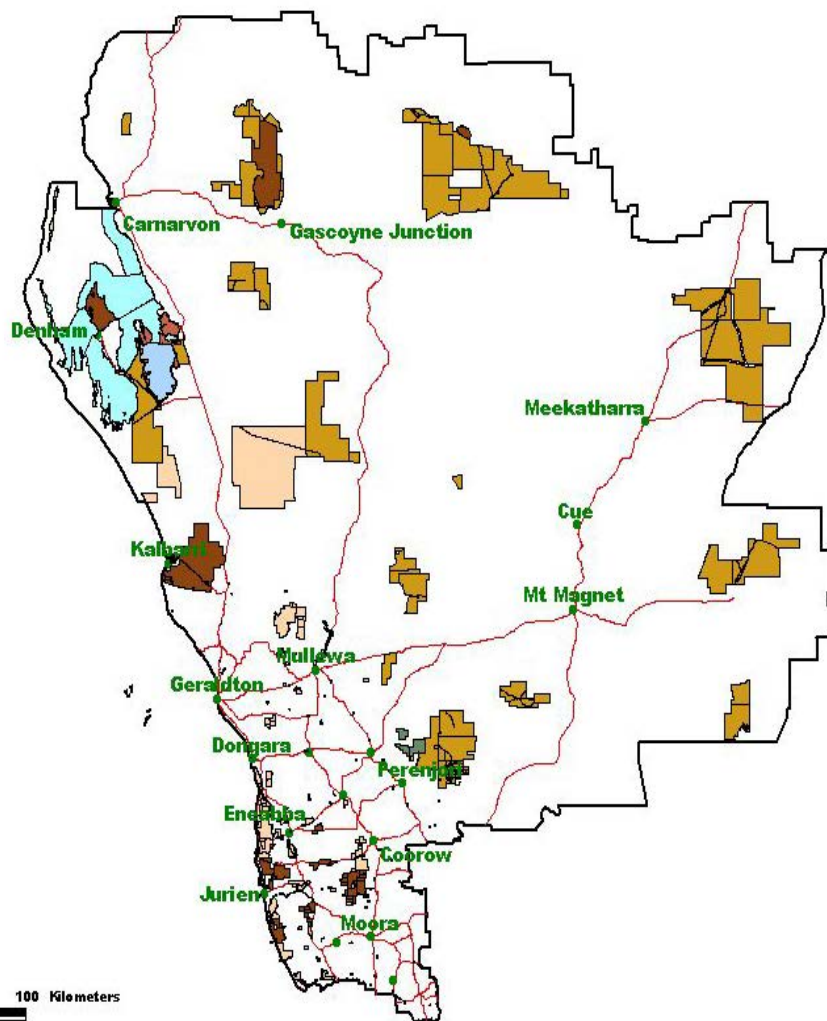
Threatened species recovery

Off reserve conservation

Partnerships



Midwest Regional Overview



9 million hectares of conservation estate

Over 100 serviced recreation sites including national tourism icons

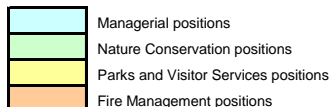
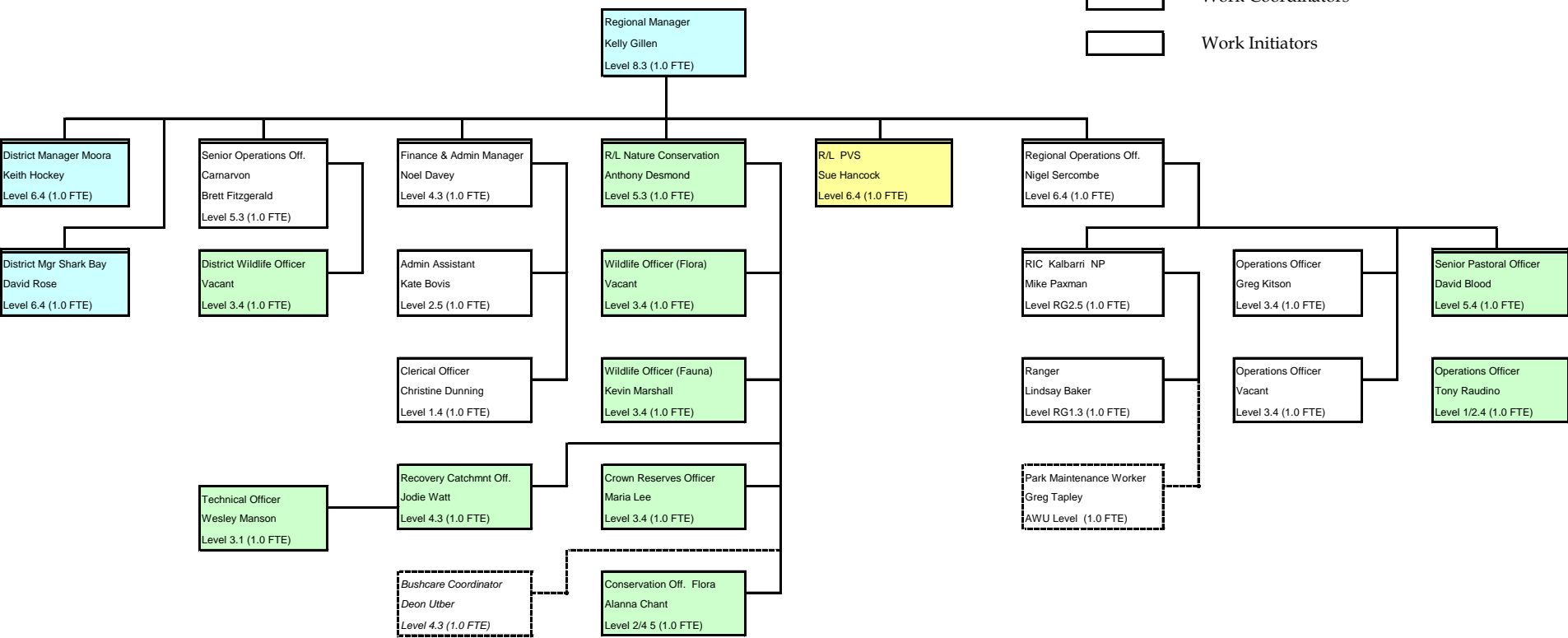
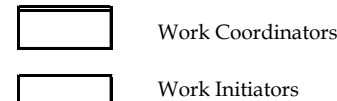
630,000 visits recorded in 2001/02

More than \$3.5m capital invested over the past 3 years in new visitor facilities and experiences

Major nature conservation activities - Western Shield, Project Eden, Shark Bay Marine Park, GMS acquisitions, threatened flora management, salinity strategy, recovery catchment, NRM strategy

Midwest Organisation Chart

LEGEND



April 2003
 No. of reporting levels for region: 5
 No. of FTEs: 51.3

Geraldton District - Murchison and Gascoyne

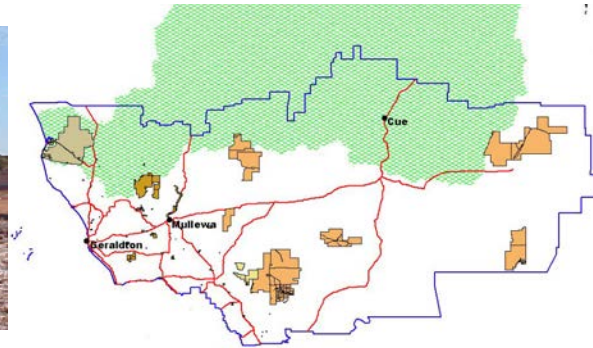
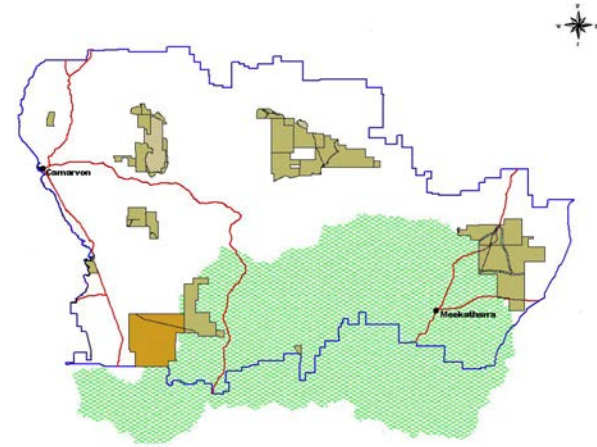
4 million ha acquired for conservation

Kennedy Range National Park – Recreation Masterplan, Management Plan, no Ranger presence

Burringurrah – Mt Augustus National Park

Cobra Homestead – Old Bangemall Inn EOI

Inventory and assessment of opportunities for nature based recreation and outback tourism



More Murchison Gascoyne



Geraldton District - Coalseam

Coalseam Conservation Park capital works – Miner's Camp in 2003/04 and ongoing



Geraldton District – Abrolhos and Other

Abrolhos Islands partnerships – AIMAC, boxthorn and other weed control, Injured Fauna brochure

Recreation planning recoup projects – Abrolhos Islands boardwalk, Carnarvon Heritage Precinct walktrail, Chinaman's Pool



Buntine Marchagee Recovery Catchment

Recovery Catchment Plan

- groundwater investigations
- surface water management
- remnant vegetation survey
- wetland survey
- community survey
- agricultural systems

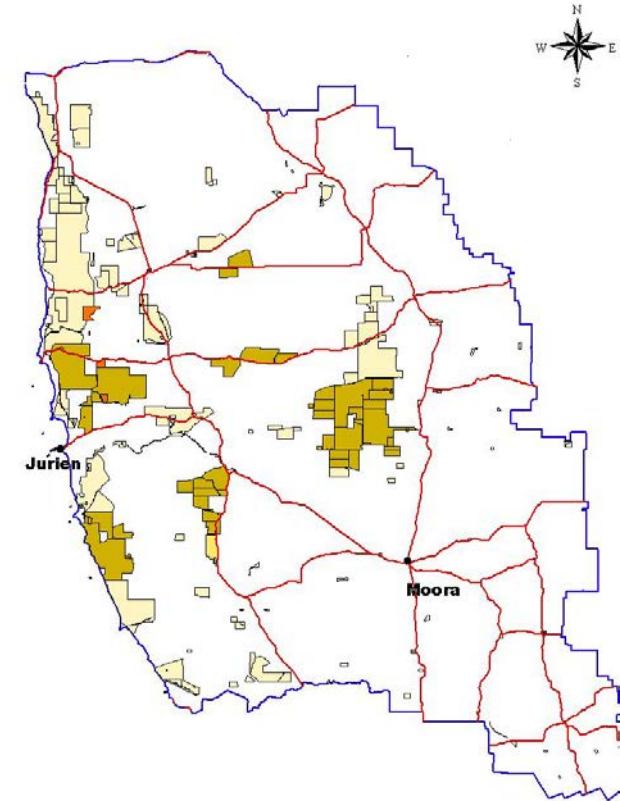
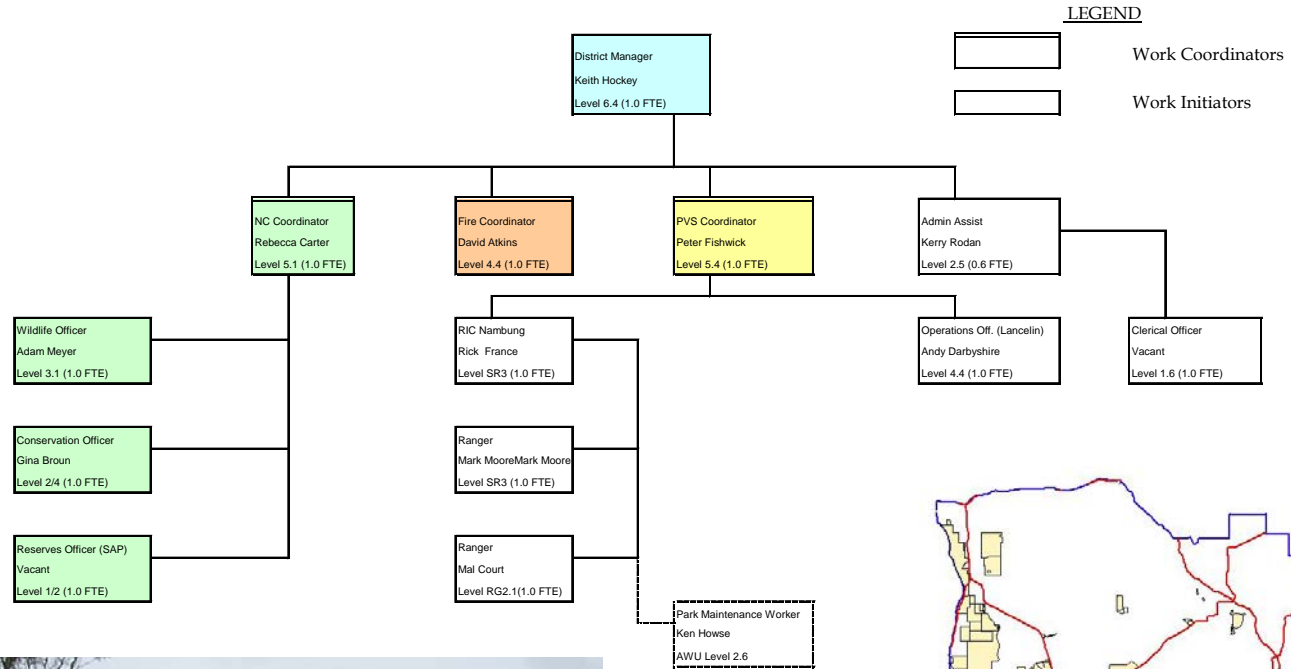


Caladenia wanosa

Photos: A.P. Brown, S.D. Hopper and S. Armstrong



Moora District and Organisational Chart



PVS on the Turquoise Coast

Indian Ocean Drive

Roadside lookouts

Lancelin to Cervantes -
Coastal day use facilities
and camping

Wedge and Grey EOI

Pinnacles Visitor Centre

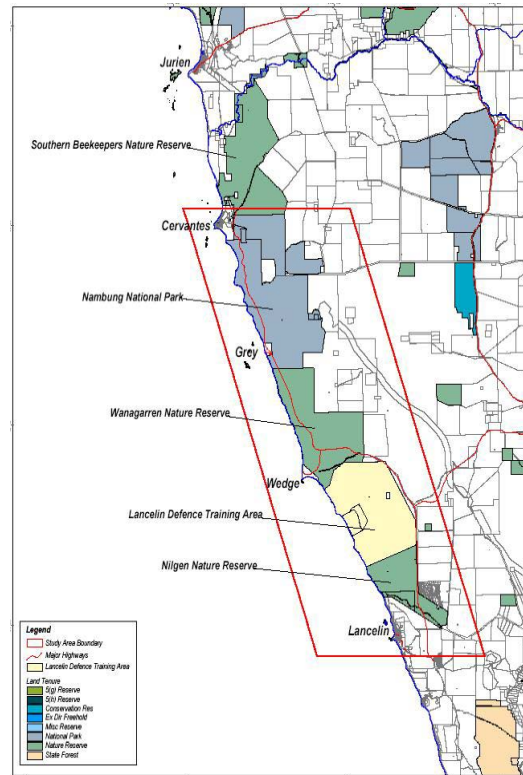
Badgingarra Nature Trail

Stockyard Gully

Lesueur National Park

Coomaloo

North Head

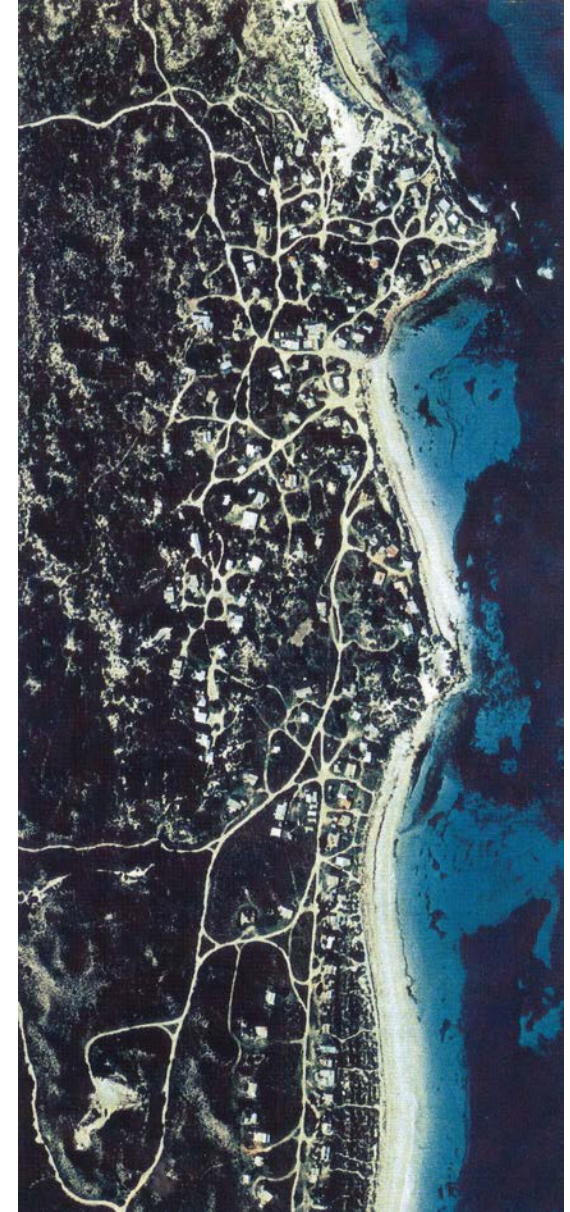
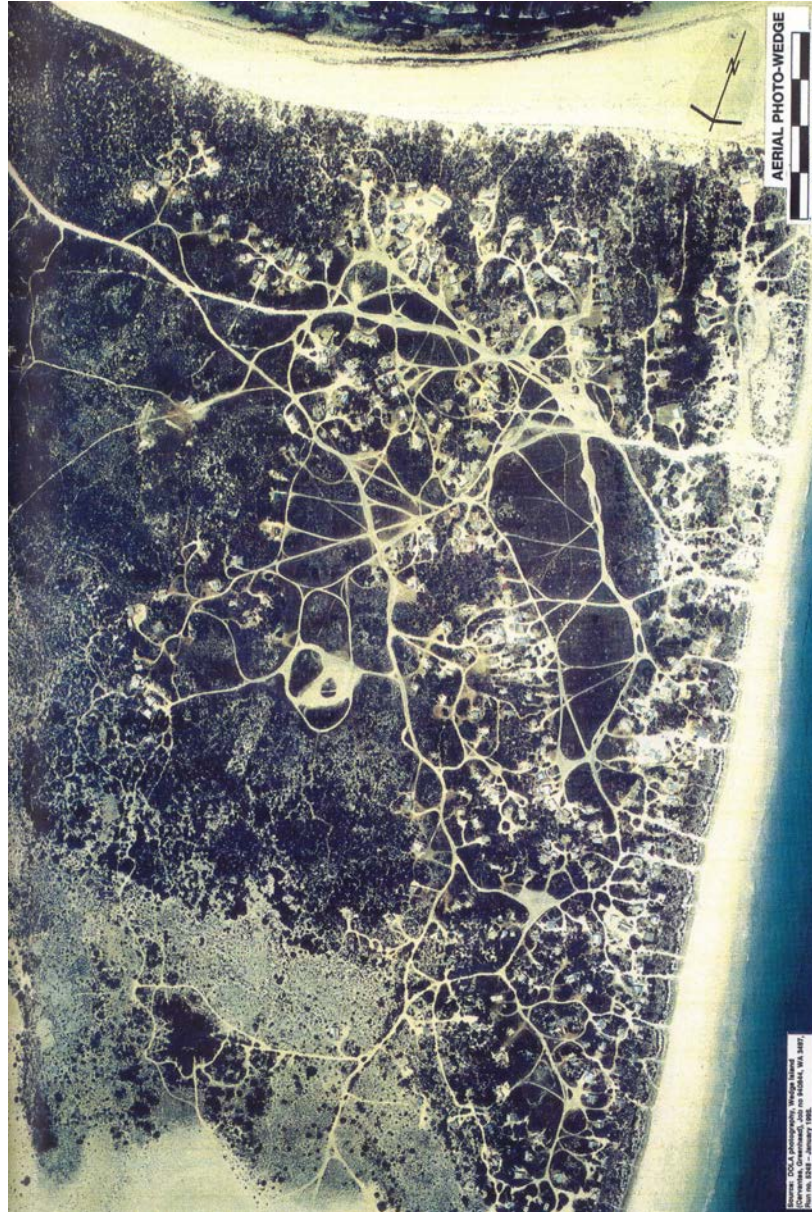


Wedge and Grey

Wedge – 370 shacks

Grey – 130 shacks

Loss of shack lease
revenue for past 2
years



Nature Conservation in the Moora District

Jurien Bay Marine Park

Turquoise Coast Island Nature Reserves – baseline surveys to support KPIs

Threatened flora and fauna programs

Reserve acquisitions through NRS

Fire management



Fire Management



Cervantes Jurien Road



Hot burn



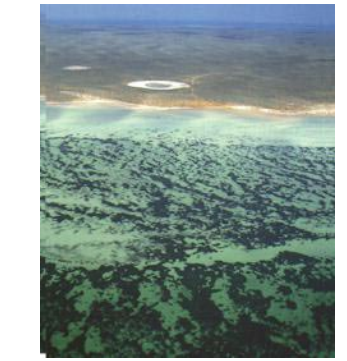
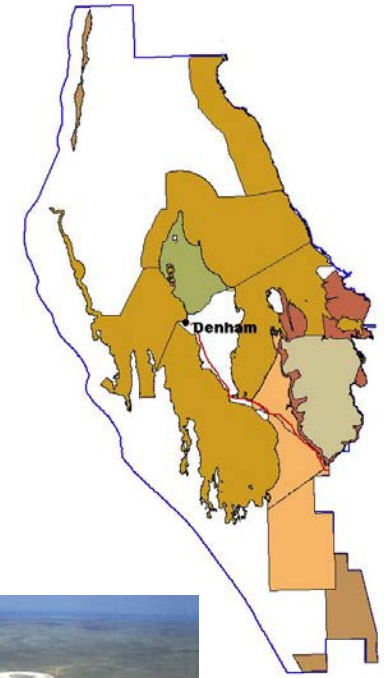
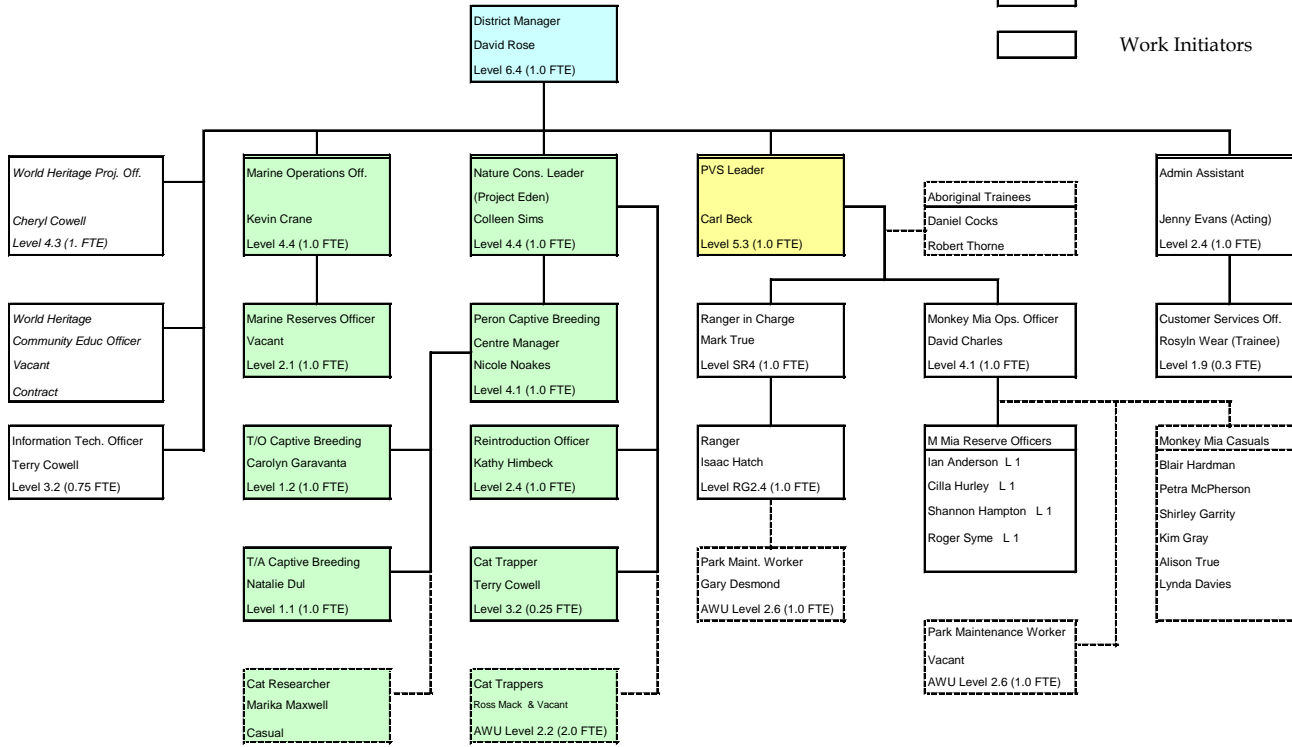
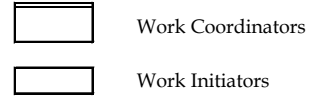
Cervantes / Nambung aerial



Watheroo headfire

Shark Bay District Organisation Chart

LEGEND



Shark Bay World Heritage Area

SBWHA Recreation and Tourism Plan

SBWHA Communication Strategy

SBWHA Interpretation Action Plan – World Heritage funds and potential GDC partnership to investigate feasibility of Foundation and raise funds to implement plan

2 Aboriginal trainees

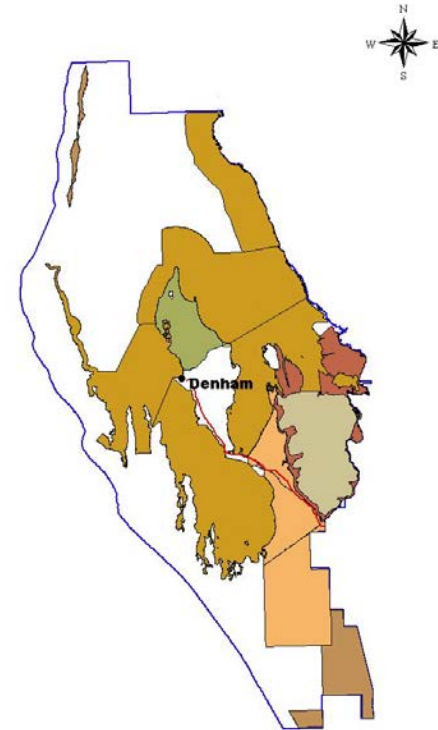
Mulgana, Gnulli and Nanda involvement

Yadgalah partnerships

World Heritage Centre and joint management precinct

PVS focus - Skip Jack Point lookouts and Cape Peron redevelopments; Peron Homestead Precinct and Project Eden

Issues – maintenance of Eagle Bluff and Hamelin Pool boardwalks; Dirk Hartog and Edel Land acquisitions



Monkey Mia Visitor Centre

Visitor Centre repairs and DHW issues

Financial viability and staff structure



Summary of key issues

Moora District

Establishment of Jurien Marine Park

Baseline survey work on Island Nature Reserves to support management plan
KPIs

Staging of Lesueur scenic drive

Implications of lost revenue at Wedge and Grey

AWU fire crew support

Geraldton District and Regional

Joint management for Kalbarri National Park

Regional based landscape architect extremely effective and regional interpretation officer required

Shark Bay

Monkey Mia Visitor Centre repairs and issues with DHW

Monkey Mia financial viability and structure

Office accommodation

World Heritage communication and interpretation – implementing the plans and potential partnership with GDC

Negotiations for Dirk Hartog Island and Edel Land

Gascoyne Murchison

Staff capacity for Kennedy Range and Mt Augustus National Parks and new acquisitions

Inventory and assessment of natural and built assets and recreation opportunities

The End

