



Government of Western Australia
Conservation Commission



Review findings. Management planning in WA

Associate Professor Sue Moore & Dr Kate Rodger



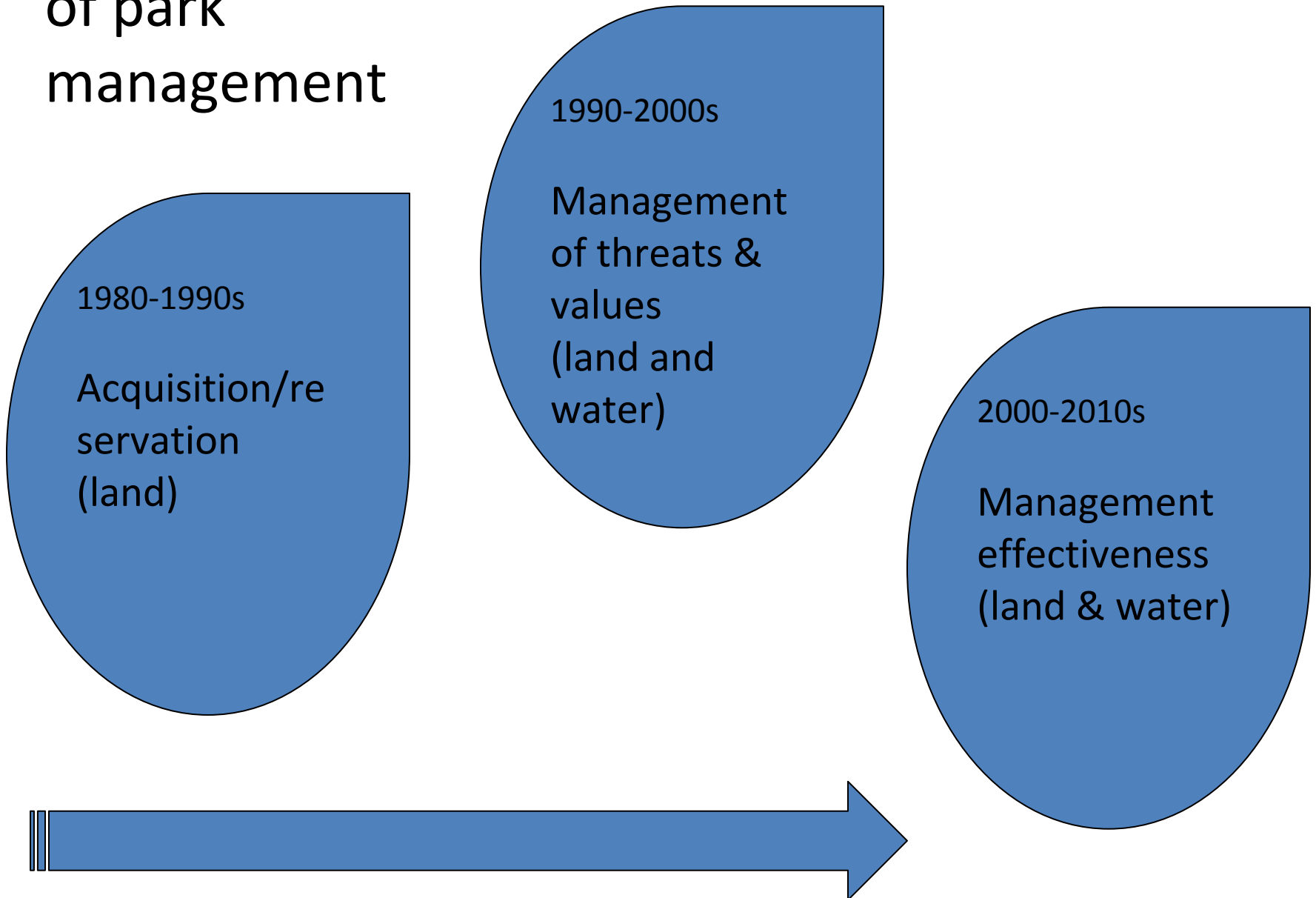
The brief

- Provide advice to Conservation Commission on:
- Development of a framework for good quality plans:
 - Related to a regional planning area
 - Concise
 - Can be implemented
- Emphasis on both plan and process

The approach

- Review of management planning elsewhere
 - Web
 - Interviews with NSW, Qld & Vic planning staff
- SWOT analysis with DEC staff
- Report
- Regular meetings & guidance from Commission staff
- Feb – Oct 09

Changing focus of park management



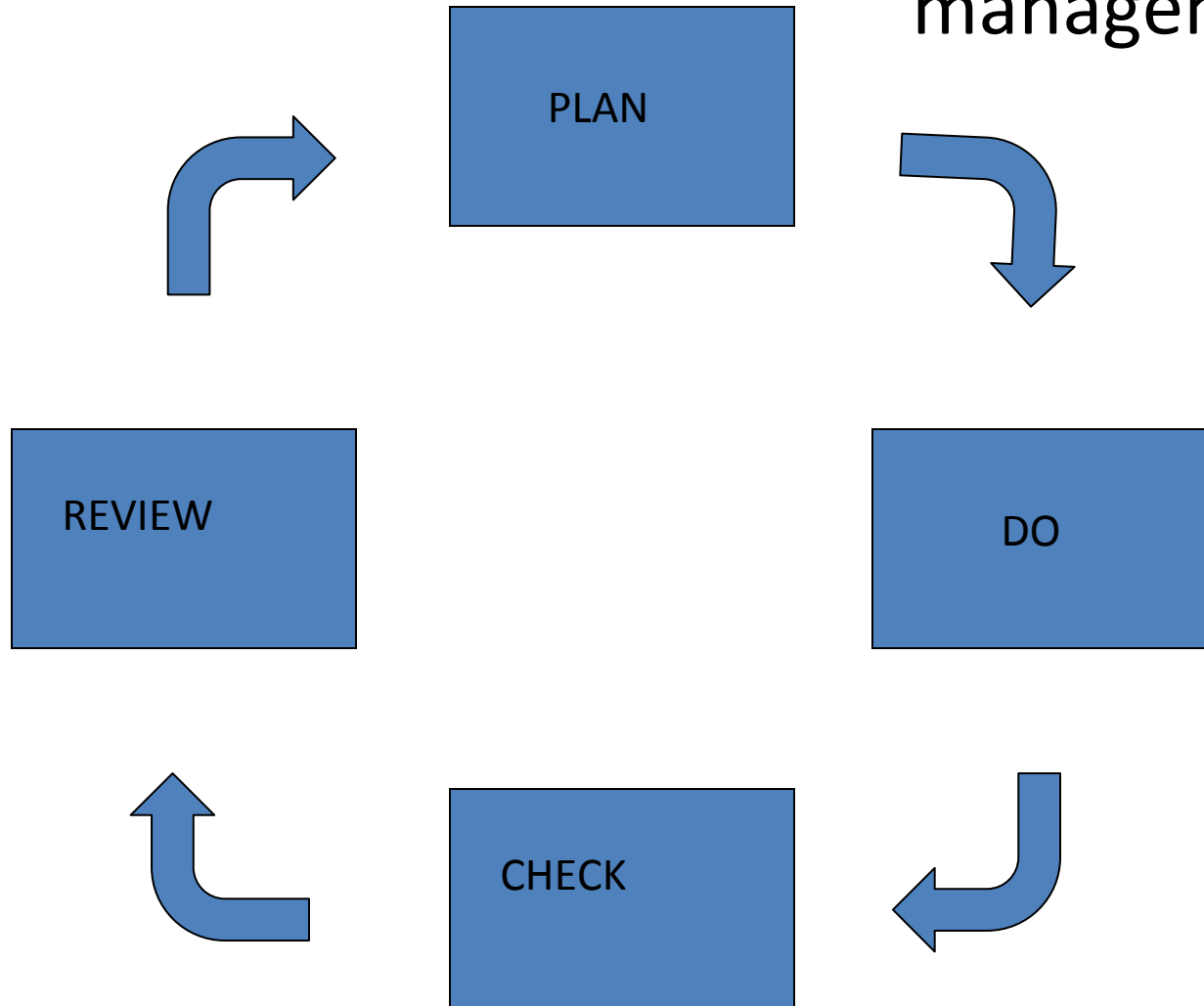
Results of 'elsewhere' review

- High status of management plans & central to agency operations
 - Recently reaffirmed

Results of 'elsewhere' review (cont)

- Values-based planning and management
 - IUCN approach
 - Reduces plan length
 - Obtains support for parks

Responsive and responsible park management



Results of SWOT analysis

- Expectations of plans and planning
 - Extraordinary
- Public engagement
 - Highly regarded
- Plan content, structure & style
 - Too long
 - Support for regional approach

Results of SWOT analysis (cont)

- Policy & organisational issues
 - Lack of policy integration
 - Lack of publicly available up-to-date policy statements
- Implementation & performance reporting
 - Plans not implemented
 - Limited performance reporting
 - Close loop (as did NSW in 2004)

Recommendations

- **Reformed** approach -> short, regional plans that are implementable, with measurable actions
- Changing the format & content of plans only part of solution, not all. Also need organisational change (DEC)

Public

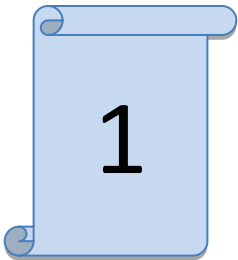


Government of **Western Australia**
Department of **Environment and Conservation**



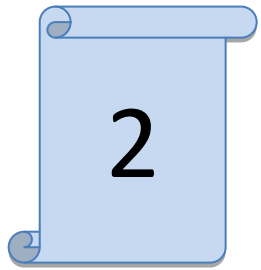
Government of **Western Australia**
Conservation Commission

Changing planning depends on these partners



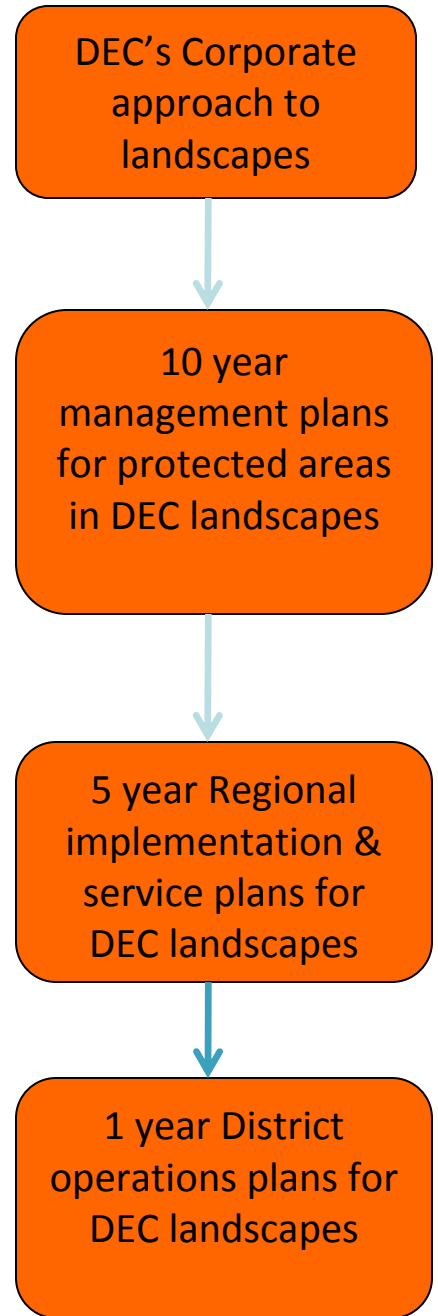
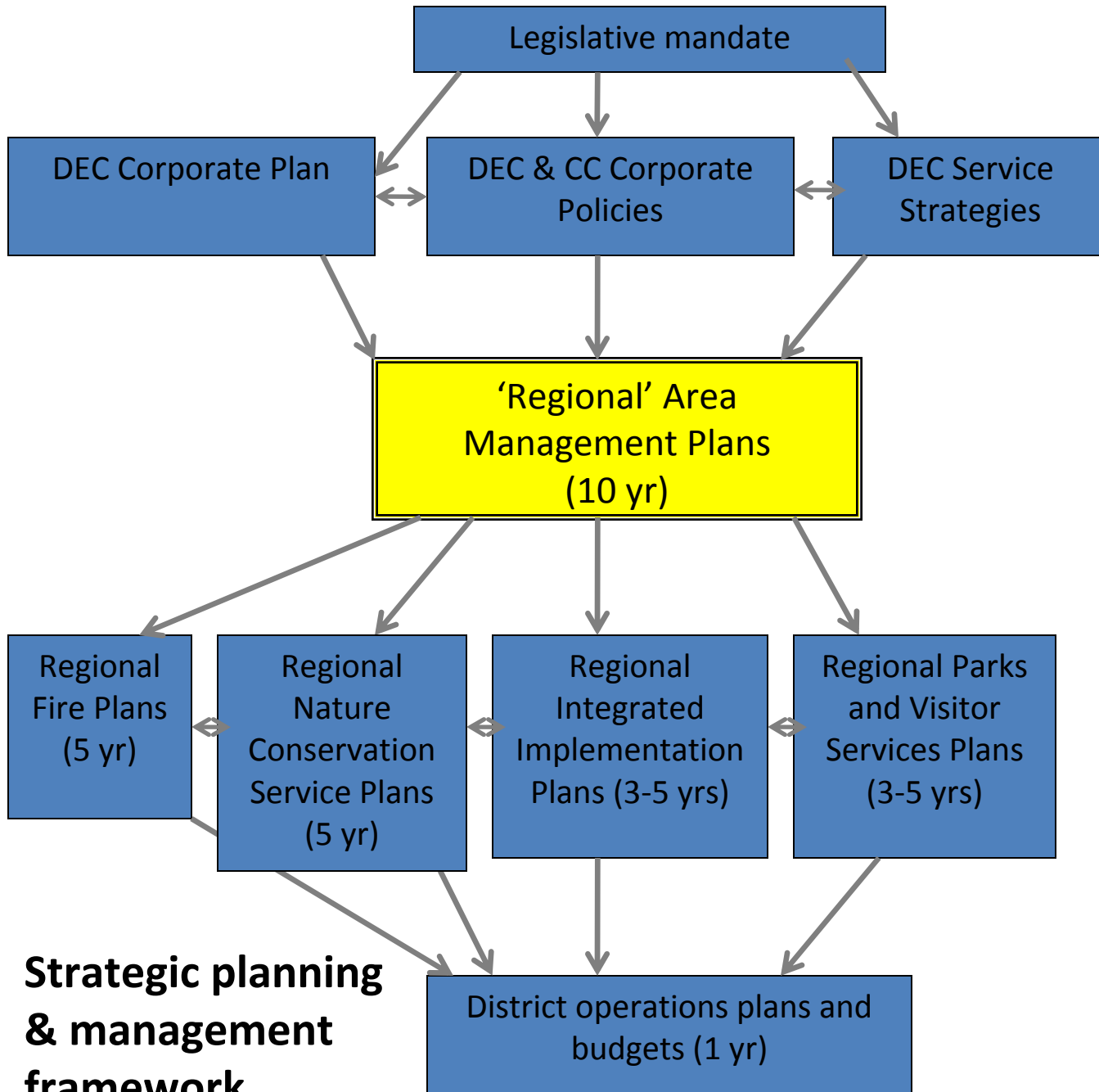
1 Plan content, structure & style

- Key values based plans
- Minimal background/resource information
- Modern lay-out
- Targets/objectives for each value & associated performance reporting
- Grouping of reserves for plans based on:
 - Biogeography
 - Values, threats, issues
 - Range of recreation opportunities
 - Sensible administration



Integrated policy, planning & management

- Reformed, integrated approach to ‘planning’ (diagram)
- Up-to-date publicly available policy statements
- Statewide policy statement on national park management (ex-Management Plan template)
- Addressing issues in the ‘right’ place





3

Planning processes

Increased emphasis on management planning as a higher order activity by:

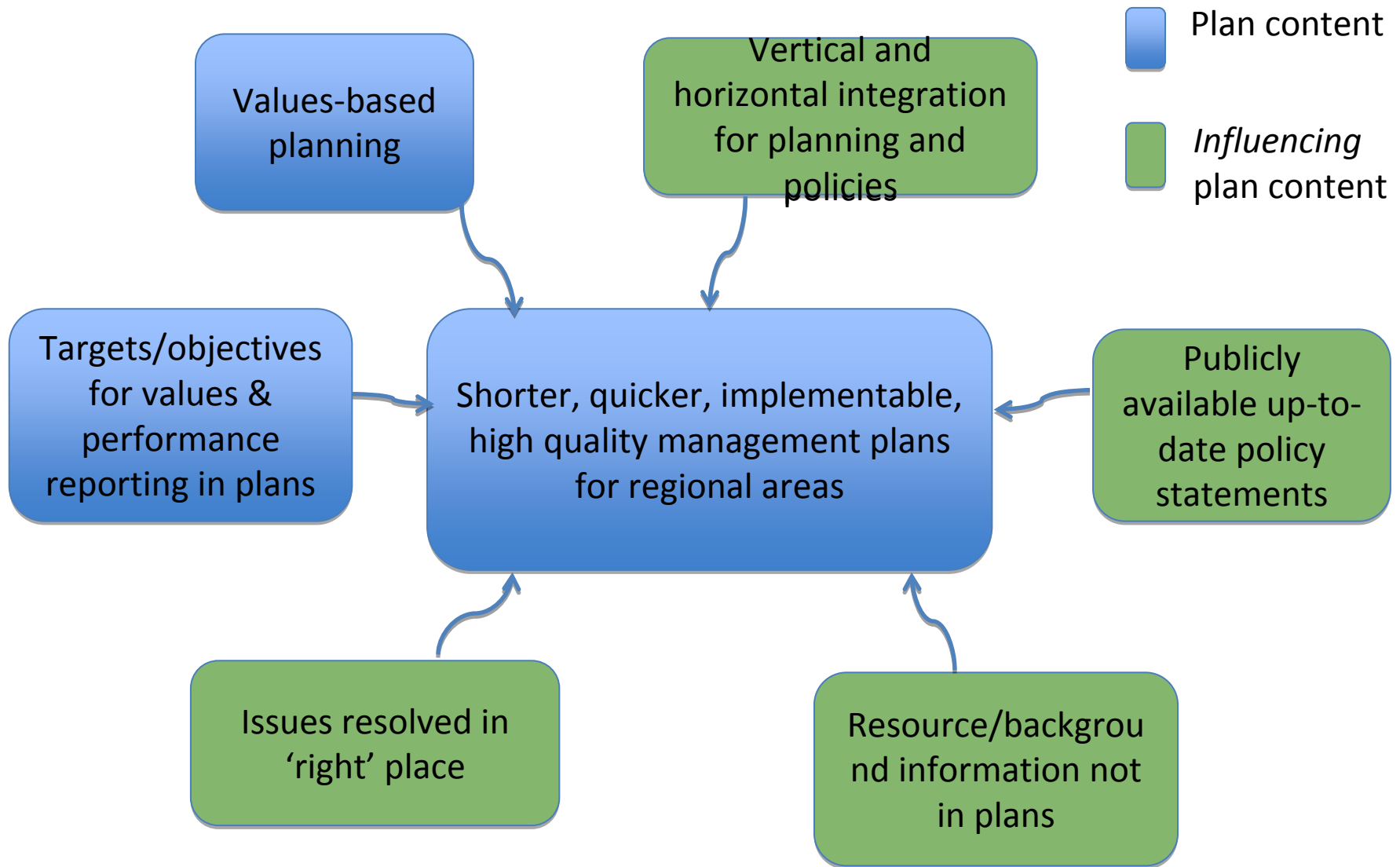
- DEC specialist engagement and input
- Staff training (planners as decision-makers & facilitators, not jack-of-all-trades)
- Advancing the role of planners, e.g.
 - Amend planning manual to better address ‘processes’ of planning (e.g. how to do values based planning)



Linking plans to resources

- Link 1 year operational plans to management plans
 - Use integrated regional plans

Elements for improving plans & planning



The way forward

3-6 mth 'breathing space' to reform planning:

- Public, up-to-date policy statements (inc one on NP management)
- Policy guidance on
 - Strategic planning & management framework
 - Management planning in DEC (e.g. values based planning)
- New processes for dealing with resource information
- MOU between DEC & CC
- Bringing the community along