

Torndirrup National Park Royalties for Regions Infrastructure Improvement Project

Potential Hazards at The Gap and Natural Bridge Visitor Focus Area

Background

This document highlights the site specific potential hazards that are inherent at The Gap and Natural Bridge Visitor Focus Area in Torndirrup National Park. Torndirrup National Park is managed by the Department of Environment and Conservation (DEC). Funding has been received from Royalties for Regions to improve the facilities within the Park; updates will initially centre on the Visitor Focus Area which covers the area from the car park near The Gap towards the ocean. Telephone reception is poor or non-existent; there is no drinking water, no power, little shade or shelter and no toilet.

This document does not include any human-introduced hazards that may occur during the project including, but not limited to, plant, structures, and workers.

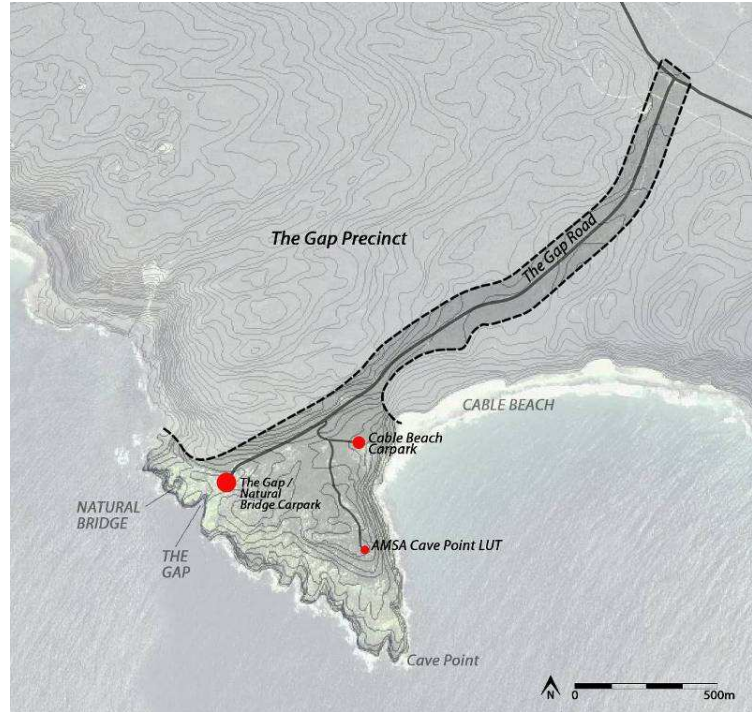
This document is not defining the *Occupational Safety and Health Act 1984* (OSH Act) requirements for the project however, it is a requirement that all personnel comply with:

- the OSH Act;
- Occupational Safety and Health Regulations 1996;
- appropriate Codes of Practice;
- wearing and using personal protection equipment (PPE);
- approved Job Safety Analysis (JSA);
- approved Safety Management Plans;
- approved Hygiene Procedures;
- approved Environmental Management Plans (EMP); and
- any other plans or directions given.

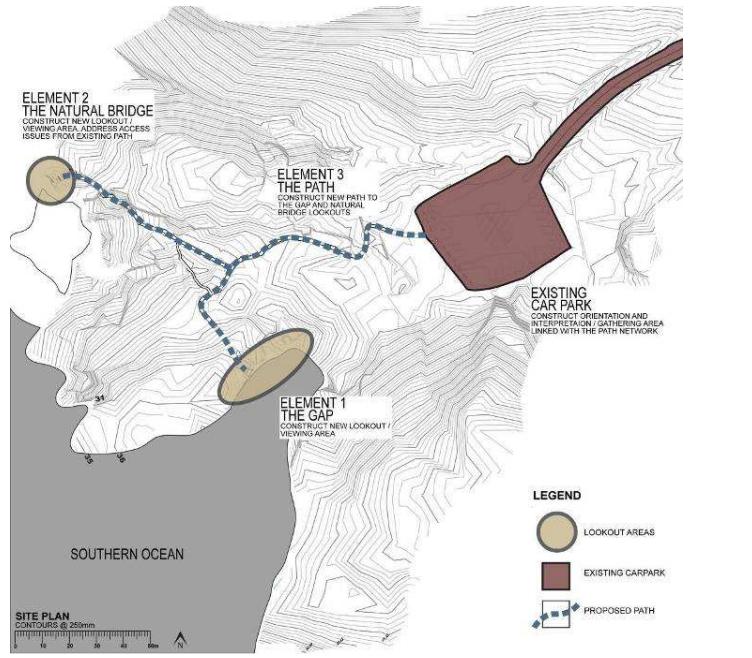
Do not underestimate the dangers associated with the site.

Orientation

The Gap Precinct



The Gap / Natural Bridge Visitor Focus Area



Hazard List

<u>Hazard</u>	<u>Notes/Precautions</u>¹
Individual Geohazard areas (see map at end of document)	Stay away from these Geohazard areas.
Cliff edges	Stay away from the cliff edge. High cliffs with numerous rocks at sea level. Falls will result in severe injury or death. Cliff edges can collapse without warning.
High and/or gusty winds	Weather conditions can change quickly. Do not chase personal clothing (e.g. hats) or dropped work equipment. Be careful when removing clothing as this can catch the wind and produce a kite effect.
Uneven surfaces	Trip hazard - watch where you step. Wear closed in shoes.
Wet and/or slippery surfaces	Rocks can become extremely slippery when wet from rain and ocean spray.
Sea surges and/or wave jets	Wave jets have previously knocked visitors off their feet at the current Gap lookout.

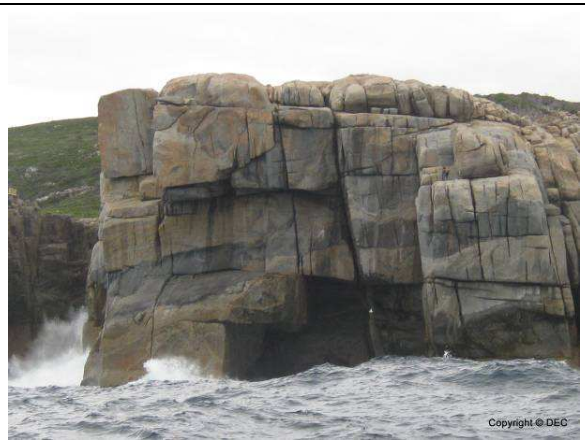
¹ This is not an exhaustive list of notes or precautions.

<u>Hazard</u>	<u>Notes/Precautions</u>¹
Ocean	<p>Huge waves and extreme swells can suddenly occur even on calm days.</p> <p>Waves can sweep over rocky headlands.</p> <p>Powerful rips and undertows can occur.</p> <p>Do not attempt to retrieve items that fall into the water.</p>
Rock movement and/or rock slips and/or rock falls	<p>Unstable rock. Rocks are extremely slippery when wet.</p> <p>Falls can result in severe injury or death.</p>
Crevices	<p>Unstable rock joints with long drops.</p> <p>Falls can result in severe injury or death.</p>
Sun/outdoor work	<p>Weather conditions can change quickly.</p> <p>Extreme Ultra Violet (UV) is common even during winter.</p> <p>Carry drinking water.</p> <p>Wear hat, long sleeved shirt, long trousers and sunglasses (if appropriate).</p>
Vehicles	<p>Car park can become crowded with local and overseas visitors.</p> <p>Be alert to vehicle movements when in the car park.</p>

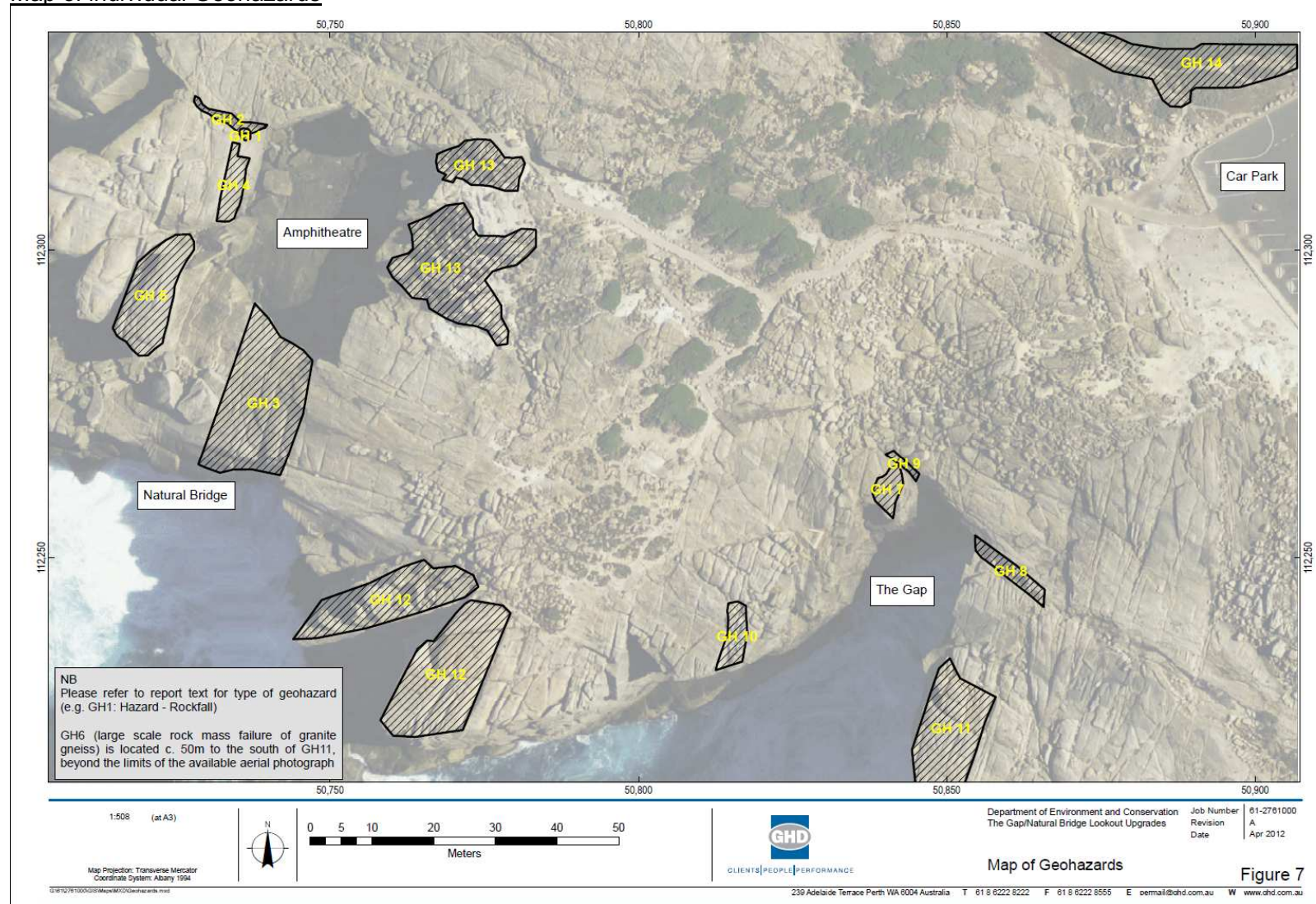
<u>Hazard</u>	<u>Notes/Precautions¹</u>
General public	<p>This is a heavily used site especially at weekends and during school holidays and it is anticipated to remain open during pre-construction.</p> <p>Rock climbing and abseiling activities occur on the site.</p> <p>Visitors can get very close to the cliff edges.</p> <p>Visitors may not understand spoken or written English.</p> <p>Be aware of visitors who may intrude into your workspace. Visitors may be inquisitive and be attracted to your workspace.</p>
Snakes	Snakes may be venomous.
Biting Insects	Biting insects may include ants, bees, wasps, mosquitoes, and ticks.

Site Photos





Map of individual Geohazards²



² The Gap/Natural Bridge Lookout Upgrades, Concept Design Stage – Preliminary Geotechnical Investigation Report, GHD (April 2012)
Page 8 of 8
TNP Site Specific Hazards (Visitor Focus) - version 3