

LIBRARY

Department of Biodiversity,
Conservation and Attractions

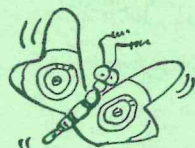
This PDF has been created for digital preservation. It may be used for research but is not suitable for other purposes. It may be superseded by a more current version or just be out-of-date and have no relevance to current situations.



Tell me and I'll forget;
show me and I may remember;
involve me and I'll understand.

— Chinese Proverb

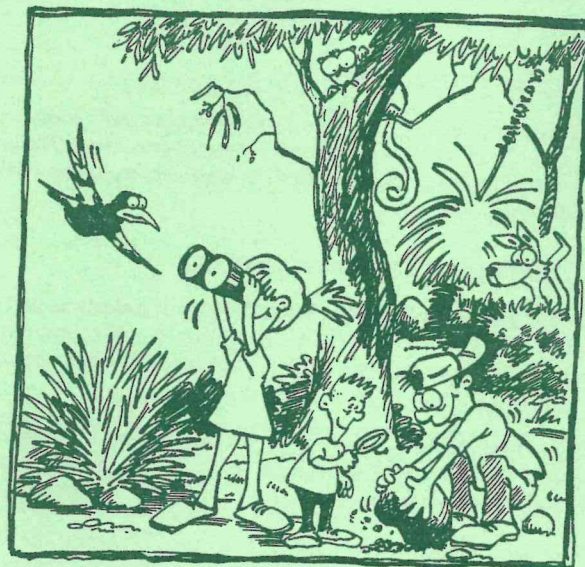
Get involved.....with The Hills Forest



DEPARTMENT OF CONSERVATION AND LAND MANAGEMENT

4283-0397-2M

Exploring The Hills Forest



**New opportunities for primary school
teachers and students in 1997**


'Exploring The Hills Forest' environmental education programs are based in the jarrah forest near Mundaring. These action-packed programs are designed and coordinated by the Department of Conservation and Land Management (CALM).



DEPARTMENT OF CONSERVATION AND LAND MANAGEMENT

4283-0697-500

1. Discovering The Hills Forest For Years 6 & 7

Sponsored by ICI Australia 

This program, which explores the jarrah forest ecosystem, was developed in 1992 and pioneered the range of opportunities now available for schools at The Hills Forest Activity Centre. We make it easy for teachers by providing the transport to and from The Hills Forest

What teachers had to say about the program. . .

This program and quality resource package have become an invaluable and integral part of my teaching right across the curriculum. - Leon

The excursion was a real voyage of discovery for all my students. - Eileen

What's involved

- ❖ **Teacher Professional Development (PD) day in the forest**
This gives teachers an overview of our programs, a resource package and some experience of the activities students will encounter during their excursions.
- ❖ **Pre-visit and post-visit activities at school**
Teachers use the resource package to prepare students before the excursion, and follow-up afterwards.
- ❖ **Students' excursion**
A one-day field trip into the forest. Students are led by CALM staff and environmental educators.
- ❖ **Student numbers**
Minimum: 25 students.
Maximum: 1 class.
- ❖ **Cost**
PD day: \$25.00 per teacher (includes lunch and resource package)
Excursion: \$5.00 per student (includes bus fare)
- ❖ **Time** Excursion: 10 am to 2.00 pm
- ❖ **When** PD days: (see dates under *Professional Development '97*)
Excursions: Tuesdays and Wednesdays in Terms 2, 3 and 4 (to 12 November)



2. Catchment Carers' Trail For Years 5, 6 and 7

A learning program about catchment and water resource management developed jointly by CALM and the Water Corporation.

What teachers had to say about the program. . .

Excellent day that tied up a very worthwhile term's program based on the trail notes. - Allan

Thankyou for a wonderful experience. The trail walk was for many students the highlight of our camp. The phrase "Catchment sharers must be catchment carers" has real life significance to us now. - Wally

What's involved

- ❖ **Teacher and Student Resource Notes**
A booklet of notes will be forwarded to teachers who book the trail excursion. A Professional Development day is not required.
- ❖ **Pre-and post-visit activities at school**
Teachers may use the notes to prepare students for the excursion and follow-up afterwards.
- ❖ **Students' excursion**
 - A one-day field trip which includes:
 - An interactive walk trail, focusing on issues such as salinity, erosion, nature conservation and the water cycle.
 - A tour of the Mundaring Weir, its history and use as part of an integrated water system.
 - A visit to the C.Y. O'Connor Museum
- ❖ **Student numbers**
Minimum: 1 class of 25 students or two classes of 50 students
- ❖ **Cost**
Excursion: \$3.50 per student (includes entry to C.Y. O'Connor Museum)
- ❖ **Time**
9.45 am to 2.00 pm
- ❖ **When**
Mondays, Wednesdays, Thursdays and Fridays in Terms 2 and 3
- ❖ **Bookings**
Phone or fax the C. Y. O'Connor Museum on (09)295 2455 weekdays (except Tuesday) 10.30am to 3.00 pm



3. Threatened Species program For Years 5, 6 and 7

A program raising student awareness of Western Australia's threatened species and current CALM projects aimed at preventing further extinctions.

What teachers had to say about the program. . .

The Action Pack really caught my students' interest, created a sense of excitement and resulted in a great improvement in language skills and other curriculum areas. - Wendy

The camp was a great success. The children learnt such a lot from the hands-on experiences of setting and checking traps and touching the animals. - Sheryl

What's involved

❖ Western Shield Action Pack

For use in school. The pack contains teacher notes, resource sheets and activity sheets for classroom work, and suggestions for extension activities that link with the curriculum.

Classes that complete the activities can enter a draw to win a 'Night Out with the Woylies' or a set of BushBooks.

Action Packs were sent to all primary schools in 1996.

Packs are available from CALM: phone (09) 334 0437. The

Action Pack is also available in the 'For Schools' section of CALM's NatureBase internet site at <http://www.calm.wa.gov.au>

'Night Out with the Woylies'

The winners of a 'Night Out with the Woylies' will camp at The Hills Forest Activity Centre and will have the chance to set and check traps and view threatened species.

❖ Student numbers

Minimum: 25 students

Maximum: 1 class

❖ Time for camps

4.00 pm to 9.30 am the following morning

❖ When

Camps in November or December



4. Forest walks and activities For Years 4 to 7

Year-round excursion activities to suit your needs focusing on the forest environment, plants, birds, spiders, reptiles and invertebrates and led by experts in each of the fields.

What's involved

Teachers choose one or more of the activities listed below to make up an excursion day or to enrich a school camp.

❖ Cold Blooded

A chance to look for reptiles in the wild and then to touch a real live skink, snake or dragon lizard back at the Centre.

Duration: 2 hours

Cost: \$3.00 per student

Minimum: 25 students

Maximum: 1 class



❖ Microworld

A hands-on experience looking for signs of the bustling underworld of our jarrah forest; students see and learn about the lives of beetles, bugs, spiders, ants, scorpions, earwigs, mantises and many more.

Duration: 2 hours.

Cost: \$3.00 per student

Minimum: 25 students

Maximum: 1 class



❖ **The Eagle has Landed or The Wisdom of Owls**

Meet the magnificent birds of prey from the Raptor Retreat Rehabilitation Centre. Learn about raptors rites, their behaviour patterns and the unique rehabilitation techniques used to release these birds back into the wild.

Duration: 1 hour

Cost: \$5.50 per student or \$4.00 per student for 2 classes

Minimum: 25 students or

Maximum: 2 classes

❖ **Papermaking**

Learn to make recycled paper using natural bush products. It's a hands-on activity that's fun and environmentally friendly.

Duration: 2 hours.

Cost: \$4.00 per student

Minimum: 25 students

Maximum: 1 class

❖ **Meeting Marsupials ***

Meet some forest marsupials and find out how injured animals are rehabilitated by wildlife carers

Duration: 1 hour.

Cost: \$4.00 per student

Minimum 25 students

Maximum 2 classes

Available: Terms 2 and 3, Mondays or Fridays only

❖ **Incy Wincy Spider**

Students learn to value our amazing arachnids by taking a safe journey to see wolf, trapdoor, orb and leaf curling spiders.

Duration: 2 hours

Cost: \$3.00 per student

Minimum: 25 students

Maximum: 1 class

* (Available Terms 2 and 3 only)



5. Busy in the Forest For Early Childhood, K to Year 3

A forest excursion that links with CALM's new early childhood forest pack for the classroom. The excursion includes a sensory trail and an opportunity for students to meet some furry, forest creatures.

What's involved

❖ **Teacher PD day in the forest**

Attendance at a PD day is not compulsory, but it is advisable. It provides an overview of the day and a chance to experience some of the activities.

❖ **Pre- and post-visit activities at school**

Teachers prepare students for the excursion and follow up afterwards using CALM's new forest pack, 'A Forest is a Very Busy Place'.

❖ **Students' excursion**

Activities include a bush walk lead by CALM's environmental educators, a teacher-led sensory trail and an animal contact session.

❖ **Student numbers**

Minimum: 25 students

Maximum: 1 class

❖ **Cost**

PD day: \$25.00 per teacher (includes lunch and forest pack)

Excursion: \$3.50 per student (whole-day), \$3.00 per student (half-day)

Forest Packs: \$10.00 each, if not attending PD day

(To order phone (09) 334 0437)

❖ **Time**

10.00 am to 2.00 pm (whole-day option)

9.30 am to 12.30 pm (half-day option)

❖ **When**

PD days: (see dates under *Professional Development '97*)

Excursions: Mondays, Tuesdays, Wednesdays and Fridays in Terms 3 and 4 (to 30 October)



6. Aboriginal Culture Excursions (ACE) For Years 4 to 7

Join leaders from CALM's Aboriginal Tourism, Education and Training Unit to explore traditional Aboriginal culture in the jarrah forest. Excursion content links with the Education Department's new Aboriginal Studies materials.

What a teacher had to say about the program. . .

It was great to see the excellent rapport develop so quickly between students and CALM's Aboriginal leader through the hands-on activities in the forest.....A good basis for mutual understanding of two cultures.

- Ian

What's involved

❖ Teacher PD day in the forest

Attendance at a PD day is not compulsory, but it is advisable. Pre- and post-visit activities at school.

Teachers prepare students for the excursion and follow up afterwards using the Education Department's Aboriginal Studies materials.

❖ Students' excursion

Activities include a bush walk exploring traditional use of plants and animals, Aboriginal Dreaming stories, language and artefact making; all with an emphasis on student participation.

❖ Student numbers

Minimum: 25 students

Maximum: 1 class of students

❖ Cost

PD day: \$25.00 per teacher (lunch included)

Excursion: \$5.00 per student

❖ Time

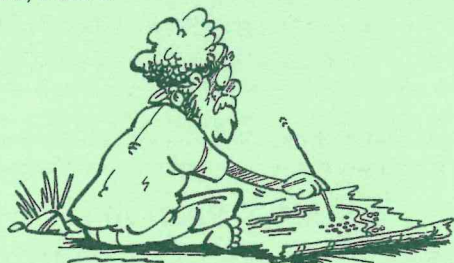
10.00 am to 2.00 pm

❖ When

PD days: (see dates under *Professional Development '97*)

Excursions: Mondays, Tuesdays, Wednesdays or Fridays.

Terms 2, 3 and 4.



7. School Camps in the Forest

Camp under canvas at The Hills Forest Activity Centre or Patens Brook camp site. Alternatively, stay at the Mundaring Youth Hostel and participate in a number of our educational programs.

What a teacher had to say about her Year 6 four-day camp. . .

Our daily activities at The Hills Forest Activity Centre combined with excellent accommodation made our camp a most purposeful and enjoyable learning experience for all. The convenience of the location meant no long bus driveThanks again. - Kathleen

❖ The Hills Forest Activity Centre camp site

Facilities: shady camp sites, covered cooking area, hot showers and toilets.

Capacity: up to two classes

Cost: \$6.00 per person per night

❖ Patens Brook camp site

No vehicle access. Meet the challenge and walk three kilometres to the secluded camp site carrying all camping gear.

Facilities: shady camp sites (15 pads), water tank and toilets, 3 firerings

Capacity: 1 class

Cost: \$3.00 per person per night.

❖ Mundaring Youth Hostel

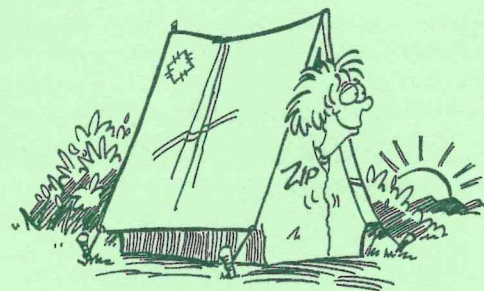
Overlooking the Helena River valley enjoy the comfort and tranquillity of the hostel about a kilometre from The Hills Forest Activity Centre.

Facilities: 36 beds. Capacity for 50. Cooking facilities or have your meals prepared for you.

Cost: \$8.00 per student per night, \$17.00 per adult per night (one free adult per group). \$50.00 deposit is required when making your booking.

❖ Availability

Patens Brook camp site and Youth Hostel available all year round. The Hills Forest Activity Centre camp site will be available from Spring 1997 onwards.



Professional Development '97

The Hills Forest Professional Development days are a good way for teachers to familiarise themselves with the range of CALM's educational resources and opportunities offered at The Hills Forest Activity Centre. They help teachers make the most of their visit to the forest.

What a school principal had to say about a whole-school staff PD. . .

It was a PD day all the staff will remember - instructive, enriched our school's outdoor and environmental education priorities; a chance for colleagues to chat away from the hectic school environment over an excellent lunch. - Brian

NOTE: The Discovering The Hills Forest for Years 6 and 7 is offered only to those teachers who have attended a PD day. However, a PD day is advisable, for other programs, particularly 'Busy in the Forest'.

Provides:

- An overview of opportunities, resources and educational packages
- Experience of some excursion activities for students
- A review of CALM educational packages and resources
- A tour of jarrah forest and a discussion about forest management with a CALM officer
- Lunch.

Dates

Term 1: Saturday 8 March and Wednesday 12 March

Term 2: Saturday 10 May and Saturday 7 June

Cost

\$25.00 per teacher (includes lunch and relevant resources)

Time

9.30 am to 3.30 pm

Whole school staff PD

This is available to schools on request. The Centre provides a pleasant environment, away from school, where teachers can get to know their colleagues. The day will enrich their teaching programs.

Enquire early as School Development and Planning Days are soon booked out.



Programs at a glance

Years, 5, 6 and 7

Terms 2, 3 and 4

Discovering The Hills Forest to 12th November, (Years 6 and 7 only)

Threatened Species program - At school

Cold Blooded

The Eagle has Landed

The Wisdom of Owls

Papermaking

Meeting Marsupials

Aboriginal Culture Excursions

Terms 2 and 3 only

Catchment Carers' Trail

Term 4 only

Threatened Species program camp

'Win a Night Out with the Woylies' - November-December

Years 4

Terms 2, 3 and 4

Cold Blooded

The Eagle has Landed

The Wisdom of Owls

Papermaking

Meeting Marsupials

Aboriginal Culture Excursions

Early Childhood K-3

Terms 2, 3 and 4

Incy Wincy Spider

Microworld

Cold Blooded

The Eagle has Landed

The Wisdom of Owls

Terms 3 only

Busy in the Forest

Professional Development

Term 2 Saturday 8th March, Wednesday 12th March,

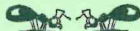
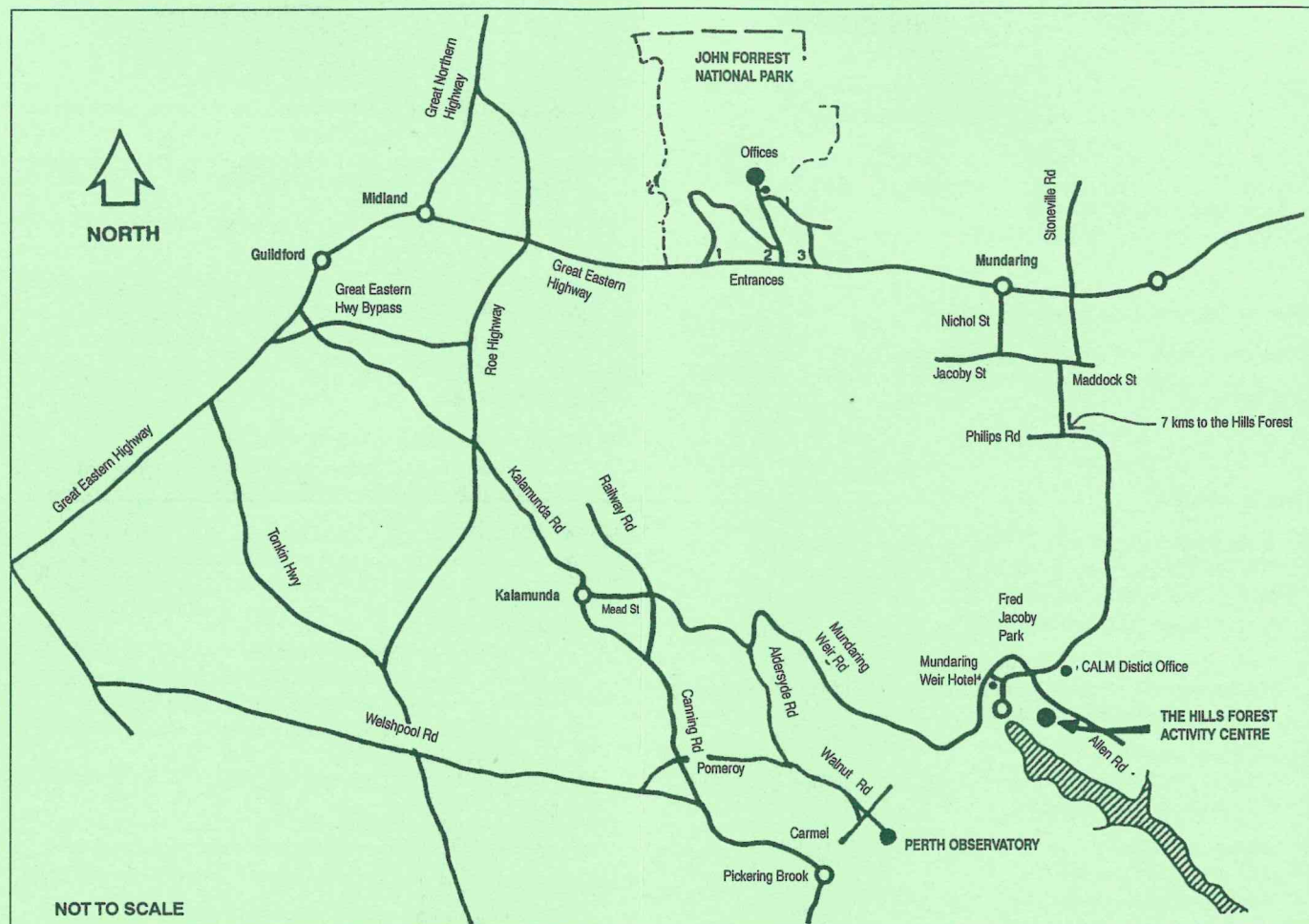
Term 3 Saturday 10th May, Saturday 7th June

All school staff PD on request

Camping

Terms 2, 3 and 4 Youth Hostel and Patens Brook camp site

Terms 3 and 4 The Hills Forest Activity Centre camp site - spring onwards



About CALM

The Department of Conservation and Land Management (CALM) has the task of conserving and managing Western Australia's unique natural heritage for present and future generations.

On behalf of the people of Western Australia, CALM manages a significant portion of the State, including our national parks, State forest, nature reserves, marine parks and timber reserves. It is a large task and one that requires the awareness, understanding and involvement of the wider community.

❖ The Hills Forest project

CALM initiated The Hills Forest project to raise awareness and understanding of the values and management of our forests. It offers visitors of all ages a range of outdoor experiences in the forest environment of Mundaring.

❖ 'Exploring The Hills Forest' programs

These programs have been developed for school students as part of The Hills Forest project. They have been written by local educators for local students. Since 1992, more than 8000 students have been through our programs, and the demand is growing.

Many teachers echo the comments of this teacher; *I am very grateful for your programs—they have given me so many useful resources and vitalised my teaching.* - Sheryl

Now we can offer something for every year level. Programs link with learning areas of the curriculum: Science, Society and Environment, Arts, English and Mathematics. They also support the aims of the Student Outcome Statements. Each program includes an excursion to The Hills Forest Activity Centre, which is guaranteed to be interactive, informative and exciting.



Bookings and Enquiries

❖ Bookings and Enquiries

First Book by phone

Phone The Hills Forest Activity Centre weekdays from 8.30 am to 4.00 pm on (09) 295 2244 or fax on (09) 295 3247.

NOTE: For Catchment Carers' Trail bookings, phone or fax the C. Y. O'Connor Museum on (09) 295 2455.

Confirm your booking

Return the registration form (below) to:
'Exploring The Hills Forest' Programs
CALM, The Hills Forest,
Mundaring Weir Rd.
MUNDARING WA 6073

Make your payment

Payment must be made with your registration. Please make cheques payable to: *Exploring The Hills Forest Program.*

Excursion fee for small classes (i.e. less than 25) is negotiable.

Details of your PD, excursion or activity will be forwarded to you on receipt of your registration.

Registration Form – Exploring The Hills Forest

Teacher's name: _____

School: _____

Address: _____

Contact: (phone) _____ (fax) _____

Year: _____ No. of students (min of 25 per class): _____

Professional Development day (preferred date): _____

Activity/Program Name: _____

Date booked _____

Total Cost: \$ _____

Cheque enclosed (tick) ☐

Teachers can find out about all CALM's educational programs in the 'For Schools' section of the NatureBase internet site at <http://www.calm.wa.gov.au>