

# LIBRARY

Department of Biodiversity,  
Conservation and Attractions

This PDF has been created for digital preservation. It may be used for research but is not suitable for other purposes. It may be superseded by a more current version or just be out-of-date and have no relevance to current situations.

# YANCHEP NATIONAL PARK

## Guide and Map

In the 2 842 hectares of Yanchep National Park you can see wetlands, tuart and banksia woodlands and limestone caves, and discover the park's rich cultural heritage.

### ■ WETLANDS, WOODLANDS AND CAVES

The less 'developed' areas of the park provide a fascinating insight into how Perth itself would have looked before European settlement.

Yanchep National Park is situated on the Swan Coastal Plain, a flat land of two-million-year-old sands and low-lying wetlands. These wetlands are a window to a vast reserve of underground water, the Gngangara mound.

Tuart and banksia woodlands provide habitat and food for a wide range of wildlife, including the tiny honey-possum and white-tailed black cockatoo. Here and there, crags of eroded limestone rise above the soil, hinting at the vast network of caves, pot-holes and underground streams that lie under the park.

### ■ HERITAGE

The name Yanchep is derived from the Aboriginal word 'yanget', meaning bulrush.

Coastal wetlands, such as Loch McNess, were a major source of food and water for Aboriginal people living on the Swan Coastal Plain before European settlement.

Yanchep was first made a reserve in 1905. During the great depression of the 1930s, sustenance workers constructed roads and buildings and dredged parts of Loch McNess. In 1969 Yanchep was given full status as a national park and the conservation of native flora and fauna became important in the park's management.

Yanchep is now a national park for both conservation and recreation. Visit the Gloucester Lodge museum for more information about the park's history.

### ■ ANIMALS

Most native animals are nocturnal so are seldom seen during the day. However, grey kangaroos are a common sight, particularly in the early morning and just before dusk.

Tiny honey-possums feed on nectar, pollen and small insects. Short-nosed bandicoots leave distinctive diggings when they forage for grubs and worms. These cone-shaped diggings can be spotted by sharp observers in sandy areas under low scrub. Yanchep is also home to many different birds. Friendly waterbirds and interesting bush birds are common. Bird check-lists are available at the visitor centre.

### ■ REMEMBER

#### BE CLEAN

Put your litter in bins or, better still, take it with you.

#### STAY COOL

Don't light fires. Use the barbecues provided or bring your own portable gas stove.

#### SAVE ANIMALS AND PLANTS

Picking wildflowers is not permitted. Firearms or pets may not be brought into the park.

#### STAY ON THE ROAD

Follow the signs in the park and stay on the roads.

**Please note:** All animals in the park are wild. They should be approached with appropriate caution.

Rangers are always glad to help make your visit more enjoyable or informative. Do not hesitate to contact them if you require any information or assistance.

#### FURTHER INFORMATION



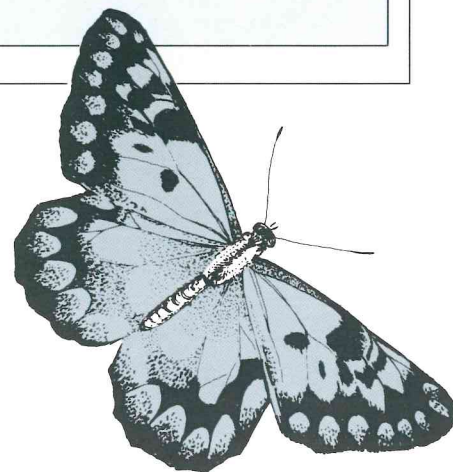
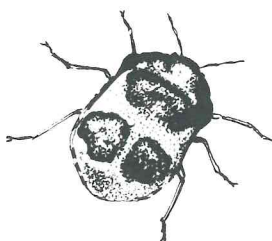
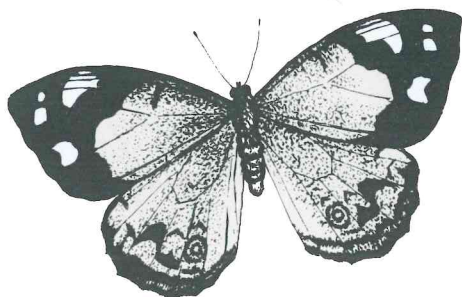
Department of Conservation and Land Management

#### Yanchep National Park

Visitor Centre (09) 561 1004

Senior Ranger (09) 561 1661

Yanchep WA 6035



# YANCHEP NATIONAL PARK

## Guide and Map

### ■ THINGS TO SEE AND DO ■

#### WALKTRAILS

Walkers can explore the coastal plain by following the walktrails.

**Yanjidi Trail - 2 km (allow 1½ hours)** This trail takes you through the heart of the Loch McNess wetland.

**Boomerang Gorge Trail - 500 m (allow 1 hour)** This level trail along the bottom of a limestone gorge is suitable for wheelchairs.

#### GUIDED ACTIVITIES

Join a ranger on a guided activity to discover more about the park.

#### CAVE TOURS

Guided tours of Crystal Cave are run every day of the year (Adults \$2.00, Children 50¢)

Monday-Saturday: every afternoon

Sunday and public holidays: 11.15 am - 4.20 pm

**Note:** other caves are dangerous and are not open to the public.

#### KOALAS

The koala enclosure is open from 8.30 am - 5.00 pm daily.

#### LOCH McNESS

Loch McNess is a scenic wetland.

**Rowing boats** are available for hire \$7.00 per hour (\$7.00 deposit)

**A launch** operated by Kiwanis International takes tours of Loch McNess most weekends.

#### GLOUCESTER LODGE MUSEUM

Opening hours: 10.30 am - 4.00 pm daily. Closed Thursdays and Fridays.

#### PICNICKING

All gas and electric barbecues are free.

#### GOLF

\$4.00 for 9 holes, \$6.00 for 18 holes. No hire clubs available.

For more information about the park inquire at the visitor centre.

