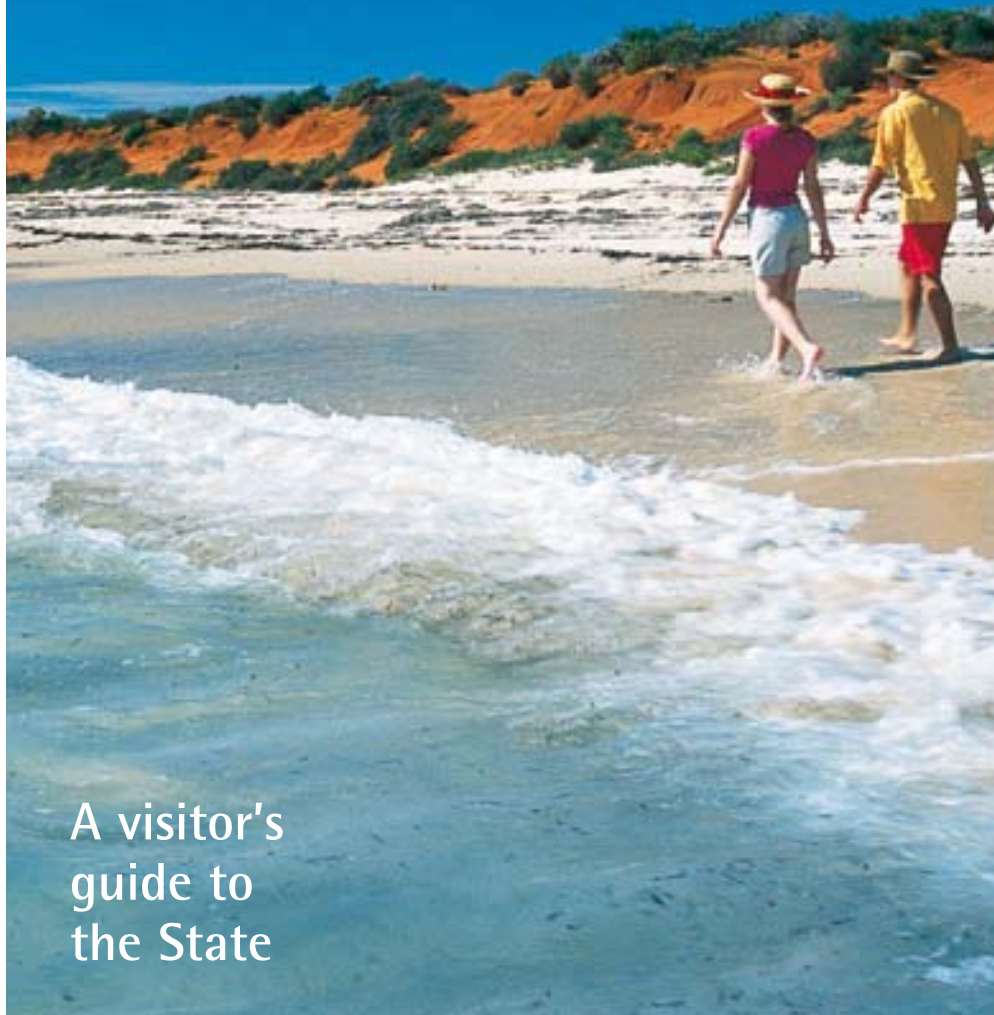


LIBRARY

Department of Biodiversity,
Conservation and Attractions

This PDF has been created for digital preservation. It may be used for research but is not suitable for other purposes. It may be superseded by a more current version or just be out-of-date and have no relevance to current situations.

National, marine and regional parks in
Western Australia



A visitor's
guide to
the State



Department of
Environment and Conservation

Welcome

Welcome to a land where one of the world's oldest living cultures, the Australian Aboriginal culture, exists in tandem with the unusual and unique creatures that inhabit this vast country.

Aboriginal people as Traditional Custodians of the land, have both cultural responsibilities to care for country and as land managers. The diversity of Aboriginal people across Western Australia is highlighted by the unique differences in languages, cultural practices and cultural connections with these lands.

WA's landscapes are protected by a world class parks system. They are some of the most stunning formations on Earth and a world apart from anything else you have seen.

WA's area is immense. Its 2.5 million square kilometres – half the size of Europe – boasts an incredible collection of plants and animals living on ancient landscapes. They are so diverse that part of the State has been named as Australia's only international biodiversity hotspot.

Dive with the world's largest fish (the whale shark), walk among the ancient treetops, sleep under a canopy of stars in the outback or explore the gorges and wilderness areas. A trip to Western Australia is truly the authentic Australian experience.

Some of the State's natural treasures are of global significance: Shark Bay, home to one of the world's largest dugong populations, and Purnululu, with its distinctive banded dome formations, have been listed as World Heritage Areas. Other areas are being considered for inclusion on this prestigious list.

Visit foreshores fringed with white beaches, rocky islands and sheer cliffs along isolated coastlines or walk through more than 100 national parks and reserves across the State's rangelands, tussock country, forests, savannah bushlands, woodlands and deserts.

The Department of Environment and Conservation (DEC) has the lead responsibility for conserving our native plants, animals and ecosystems.

It manages more than 25 million hectares that comprise the national parks, marine parks, conservation parks, regional parks, State forests, timber reserves and nature reserves.

It is also responsible for the on-ground management of nearly 87 million hectares of unallocated Crown land and 2.2 million hectares of unmanaged reserves.

Each year 11 million visitors come to our national parks and other reserves.

Please enjoy your visit...we'd love to see you again.

Publisher: Department of Environment and Conservation,
17 Dick Perry Avenue, Kensington, Western Australia 6152.

Managing editor: Sue McKenna.

Project coordinator: Michelle Tilbrook.

Design and production: Tiffany Taylor.

Cartography: Promaco Geodraft.

Photography: Tourism WA unless otherwise indicated.

Cover: Francois Peron National Park (front). Eucla National Park, Big Brook Dam, Purnululu National Park (front cover insets from left). Beedelup National Park (back). John Forrest National Park, Coalseam Conservation Park, Geikie Gorge National Park (back cover insets from left).

The maps in this booklet should be used as a guide only and not for navigational purposes.

Disclaimer: Every effort has been made to ensure that information in this guide is accurate at the time of printing. DEC accepts no responsibility for any inaccuracy or misdescription as a result of subsequent changes or for any inconvenience or loss arising from the use of this publication.

© Department of Environment and Conservation 2007

Contents

About the guide	4
Park entrance fees	6
Camping	7
Regional parks	10
North West	12
Coral Coast	20
Experience Perth	28
Golden Outback	36
South West	44
Useful information	56
Safety in parks	56
Helpful contacts	59
Index	60

This guide to Western Australia's national, marine and regional parks provides a snapshot of lands and waters managed by the Department of Environment and Conservation (DEC). To help you find your way around WA's parks, forests and waterways, there are five regions which are colour coded for easy identification. The recreational facilities and activities available in each park are illustrated by the symbols to the right.



Legend

- Attraction fee
- Barbecue - electric or gas
- Barbecue - wood
- Bibbulmun Track
- Boat launching facility
- Camp fees
- Camping area
- Canoeing/kayaking
- Caravan area
- Cycling
- Diving
- Drinking water
- Entry fees
- Fishing
- Four-wheel-drive access
- Information
- Munda Biddi Trail
- Other accommodation
- Picnic area
- Shelter/hut
- Shower
- Snorkelling
- Swimming
- Telephone
- Toilets
- Visitor Centre
- Walk trail
- Water skiing
- World Heritage Area

Directions

- N North
- E East
- S South
- W West



Canning River Regional Park. Photo - DEC

Healthy Parks, Healthy People

Parks are sanctuaries to escape the frenetic pace, noise and pollution of the urban environment. Connection with the natural world energises, uplifts and inspires us and it's no coincidence that Australian and international research indicates that contact with nature is good for our health and wellbeing.

Parks are perfect places for physical activity where you can share a range of healthy, fun and inspiring activities with family and friends. Visiting a park is the best prescription for improving physical, mental and social health.

The *Healthy Parks, Healthy People* initiative recognises the important role parks play in the health and wellbeing of the community and their significant value as a public health resource. Rest your mind, invigorate your body, strengthen social ties and achieve your full potential by reconnecting with the natural world! Park yourself for good health!



Park entrance fees

Visitor fees apply for your vehicle's daily entry into 28 of WA's parks (parks where fees apply are noted with an entry fee symbol). All fees collected are retained by the department to assist in conservation and park management, including the improvement of visitor services and facilities. WA is a large state and it's not possible to staff all park entry points. Please follow the instructions to pay your fees at parks that are not staffed.

National park passes – your ticket to nature

One of the best ways to discover WA's natural wonders is to purchase a park pass. Offering value for money and convenience, park passes are your ticket to nature. Choose from an *Annual All Parks Pass* (*Annual All Concession Pass* also available), for unlimited entry into any park for a year; a *Gold Star Pass*, which combines an *Annual All Parks Pass* with an annual subscription to the department's award-winning *LANDSCOPE* magazine; a

Holiday Pass for unlimited entry to any park for up to four weeks; an *Annual Local Park Pass* for a year's unlimited entry to one park, or group of local parks; or a *Day Pass* for entry into one or more parks on one day. These passes are for vehicles that can seat up to eight people.

By purchasing one of the above passes you will be making a valuable contribution to the conservation of these special areas. Money raised from park passes contributes to the management of parks, protection of the environment and the development and maintenance of visitor services and infrastructure.

Passes are available at DEC's offices, selected tourist outlets and retail stores, and from the NatureBase website at www.naturebase.net, through the bookshop link. For details of your nearest park pass outlet, phone (08) 9334 0333.

NB Park passes only cover the cost of entry into parks. They don't include camping or attraction fees.



Camping

Camping in ecologically sensitive areas is a special experience restricted to designated sites. Some sites attract camping fees, which are payable in addition to national park entrance fees. Parks where camping fees apply are marked with a camping fee symbol.



Lane Poole Reserve

Universal access

The department continues to improve public access and upgrade or provide new visitor facilities and services for the community where appropriate. Walking tracks at popular locations such as Yanchep National Park and Cape Naturaliste in Leeuwin-Naturaliste National Park, as well as more accessible toilet and camping facilities in a number of areas, allow people with disabilities to enjoy many of the State's natural attractions. Please contact the local DEC office for details (see **Helpful contacts** on page 59) before your visit.

Tracks and trails

Immerse yourself in WA's natural wonders by walking, cycling, canoeing, riding or snorkeling along a DEC track or trail. WA is home to many famous tracks and trails including the Bibbulmun Track, Munda Biddi Trail and the Cape to Cape Track. Each region in this vast State has a network of trails that will stimulate your senses, taking you from remote mountain ranges to colourful coral reefs. There is something to satisfy everyone's nature-based appetite.

Bibbulmun Track

One of the world's greatest trails, the Bibbulmun Track, stretches nearly 1000 kilometres between Kalamunda and Albany. The track caters for everyone, from those who want a gentle stroll to those who want an eight-week adventure. Traversing a range of landscapes from tall forests to the rugged southern coastline, this is definitely a journey with lasting memories. For maps, guidebooks and further information contact the Bibbulmun Track Foundation (08) 9481 0551 or visit www.bibbulmuntrack.org.au.



Munda Biddi Trail

Pedal power is the best way to enjoy the Munda Biddi (meaning 'path through the forest' in Nyoongar) Trail that stretches 320 kilometres from the Perth Hills to the forest town of Collie. This trail boasts a range of purpose built cycling facilities, unrivalled with any other long distance cycle trail in the world. For maps, guidebooks and further information contact the Munda Biddi Trail Foundation (08) 9481 2483 or visit www.mundabiddi.org.au.



Cape to Cape Track

Nestled in the far south-west corner of WA, the Cape to Cape Walk Track stretches 135 kilometres along the spine of the Leeuwin-Naturaliste Ridge between Cape Naturaliste and Cape Leeuwin. Mostly following the coast, the track captures a variety of landscapes including sweeping cliff-top views, majestic karri forests, ever changing wildflowers and long stretches of pristine sandy beaches. For further information visit www.capetocapetrack.com.au.

World Heritage

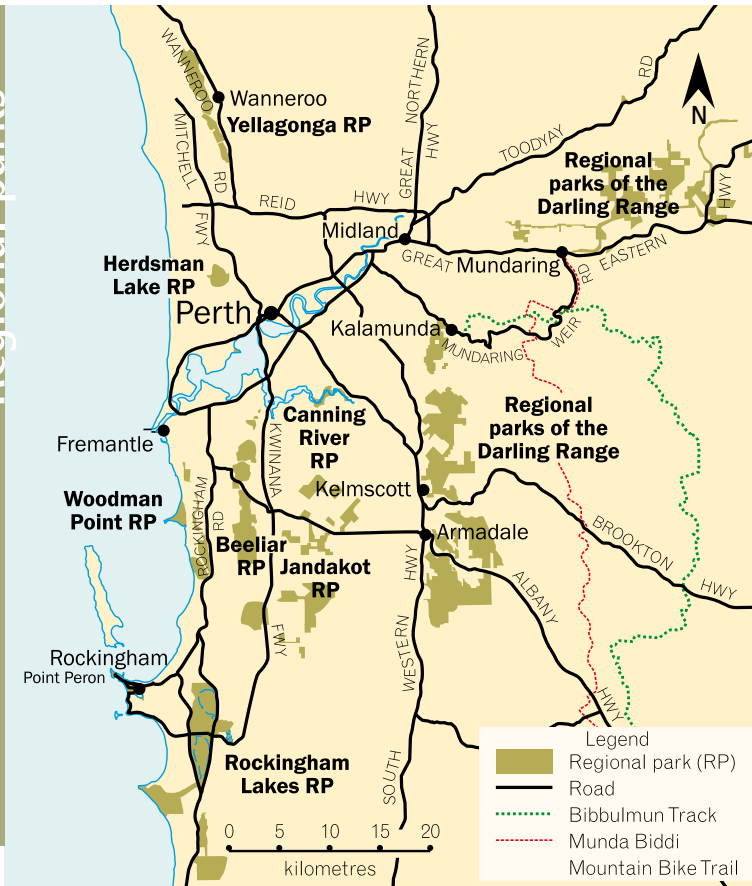
World Heritage sites are our greatest natural and cultural sites chosen for their enormous value to the people of the world. A World Heritage listing recognises these sites and their international significance, ensuring that their enormous heritage value is passed on to future generations. WA has two World Heritage sites, Shark Bay (1991) and Purnululu National Park (2003).

Leave No Trace



- 1) Plan ahead and prepare
 - Know the regulations and special concerns for the areas you'll visit.
 - While on DEC managed lands, all vehicles must be licensed under the Road Traffic Act and must comply with the regulations of this Act.
 - Prepare for extreme weather, hazards and emergencies.
- 2) Travel and camp on durable surfaces
 - Stay on established roads, tracks and paths and camp only in designated areas.
- 3) Dispose of waste properly
 - Leave no rubbish or other traces of your visit.
 - Respect drinking water catchments, don't swim or bathe in streams, dams or rivers.
 - If no toilets are available, human waste should be buried 10-15cm deep and at least 100 m away from the nearest watercourse.
- 4) Leave what you find
 - Respect indigenous art and other sites of cultural significance. Always get appropriate permission to enter these areas.
 - Avoid the spread of dieback by cleaning mud off boots and tyres.
 - Leave rocks, plants and other natural objects as you find them.
- 5) Minimise the impact of fire
 - Check fire regulations first.
 - Preferably use a fuel stove.
 - Light campfires in designated fireplaces only.
 - Extinguish fires completely and clean up.
 - Extinguish cigarette butts completely and take them with you.
- 6) Respect wildlife
 - Do not feed native animals or birds.
 - Observe wildlife from a distance. Don't approach or follow.
 - Be very careful about approaching any injured animals such as a kangaroo. If you find sick, injured or orphaned native wildlife call the WILDCARE helpline (08) 9474 9055.
 - Detour around snakes. Never provoke them.
- 7) Be considerate of your hosts and other visitors
 - Be courteous to other park users.

For further information visit www.LNT.org.au or ph (08) 9384 9062.



Regional parks

Regional parks are part of the urban landscape, keeping the bush in the city. Perth's regional parks are parks for people – places where people can come face-to-face with nature, places for simple pleasures and places of special significance. The regional park system spans from Joondalup in the north to Port Kennedy in the south and inland to the Darling Range.

For further information on Perth's regional parks please visit www.naturebase.net or ph (08) 9431 6500 or email: Regional.Parks@dec.wa.gov.au.

Beeliar Regional Park

Playground facilities available.



10km S Perth

Canning River Regional Park

Playground facilities available.



10km S Perth

Regional parks of the Darling Range

Abseiling and horse riding trails available.



30–40km E Perth

Herdsman Lake Regional Park

Playground facilities available.



7km NW Perth

Jandakot Regional Park



19km SE Perth

Rockingham Lakes Regional Park



40km S Perth

Woodman Point Regional Park

Playground facilities available.



22km S Perth

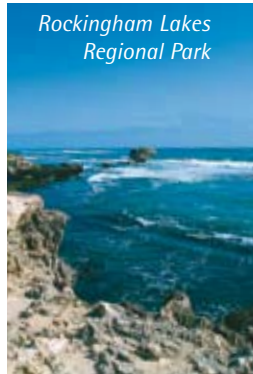
Yellagonga Regional Park

Playground facilities available.



20km N Perth

Rockingham Lakes Regional Park



Boardwalks in Perth's regional parks take visitors close to wildlife. Photos - DEC



Purnululu National Park

East Kimberley

Drysdale River National Park

Located in the wilderness of far northern WA, this park features open woodlands, the Drysdale River, pools, creeks, rugged cliffs and gorges. There are major waterfalls at Morgan and Solea Falls, as well as many other smaller falls. Access is by 4WD only and there are no facilities within the park. Permission must be obtained from Kalumburu Aboriginal Corporation to use the only access road at Carson River Station (ph (08) 9161 4300). This road will get you to the edge of the park. From there, it is all on foot.



700km NW Kununurra

Mirima National Park (Hidden Valley)

Just a stone's throw from Kununurra, and yet it seems a world away, this park is a valley with rugged cliffs forming amphitheatres, gullies and ridges. Aboriginal people have lived in this secluded spot for thousands of years. The park is popular for sightseeing, walking, photography and nature observation.



2km E Kununurra

Mitchell River National Park

This 4WD access only park encompasses parts of the spectacular Mitchell Plateau, Mitchell and Merton Falls, and Surveyors Pool. It is a significant Aboriginal cultural and heritage site and has small patches of rainforest around the margins of the plateau.



500km NW Kununurra

Parry Lagoons Nature Reserve

This internationally important wetland has abundant bird life and is a popular spot for bird watching. A boardwalk and viewing platform provide interpretation panels to educate the visitor on identifying birds.



80km NW Kununurra

Purnululu National Park

The Bungle Bungle Range is one of the most fascinating geological landmarks in WA rising up to 578 m. The range is cut by deep gullies, ridges and domes with prominent orange and black or grey bands. There are many gorges and pools (season dependent). There is 4WD access only. No caravans are permitted.



173km N Halls Creek

Wolfe Creek Meteorite Crater Reserve

Most visitors come to this reserve to marvel at the crater itself. It is the second largest crater in the world from which fragments of a meteorite have been collected. The crater is 880 m across and almost circular.



100km S Halls Creek

Crocodiles



Crocodiles can be found in waters north of Port Hedland. Stand well back from the water's edge when fishing. Do not clean fish close to the water's edge. Seek local advice about wildlife from DEC offices.



Bell Gorge, King Leopold Range Conservation Park

West Kimberley

Geikie Gorge National Park

View spectacular multicoloured 30 m deep cliffs carved by the floodwaters of the Fitzroy River through fossil reef. Guided boat tours begin in mid April and end in the first week of November (weather permitting). Ph (08) 9191 5121.



20km NE Fitzroy Crossing

King Leopold Range Conservation Park to Mt Hart

This park boasts rugged sandstone mountains, gorges, savanna, palm groves and abundant bird life.



235km NE Derby

King Leopold Range Conservation Park to Silent Grove

Both Bell and Lennard Gorges are in this park and are popular with visitors. The park also features rugged sandstone mountains as well as savanna and palm groves.



240km NE Derby

Rowley Shoals Marine Park

The Rowley Shoals includes a chain of three pear shaped coral atolls encircling shallow lagoons. These clear, oceanic reefs support a high diversity of marine flora and fauna which is why the marine park is fast gaining a reputation for offering some of the best diving in Australia.



260km NW Broome

Tunnel Creek National Park

Home to WA's oldest cave system, Tunnel Creek flows through a water worn tunnel beneath the limestone of the Napier Range. Walk 750 m through the tunnel to the other side of the range. Wade through several permanent pools and watch for bats and the stalactites that descend from the roof in many places.



115km NW Fitzroy Crossing

Windjana Gorge

This is one of the Kimberley's most stunning gorges, reaching 100 m high in some places. See the striking glory of a 350 million-year-old reef rising majestically above the surrounding plains.



145km S Derby

Watch out for cane toads

Cane toads are one of the world's most invasive species and a major environmental pest in Australia. DEC and community groups are working together to restrict their movement towards WA. To help keep these notorious hitchhikers out we all need to be vigilant. Please inspect your vehicles and equipment before entering WA. If you think you've seen a cane toad in this State ph 1800 084 881 or your nearest DEC office.

The big glands behind a cane toad's eyes release a poisonous milky liquid when the toad feels threatened.

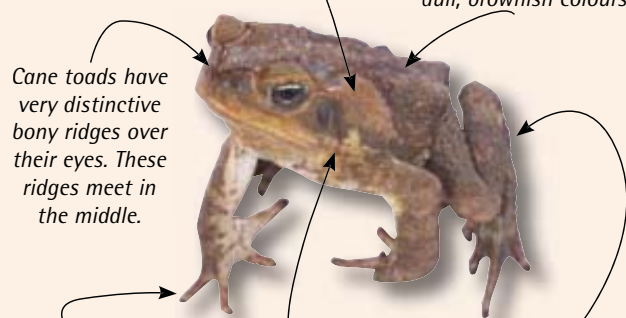
Cane toad skin is dry and warty, rather than moist and slippery like many native frogs, and usually in dull, brownish colours.

Cane toads have very distinctive bony ridges over their eyes. These ridges meet in the middle.

Cane toad feet don't have suckers on the end of the toes.

The call of a male toad is like a high-pitched purr – a bit like a telephone dial tone.

Adult cane toads are heavily built, and average from 100mm to 150mm in length.



Pilbara

Dampier Archipelago

The pristine white beaches and fringing coral reefs of the 42 islands, rocks and cays of the Dampier Archipelago offer visitors unsurpassed opportunities for water recreation at its best. Humpback whales, dugongs, dolphins and turtles frequent the waters surrounding the islands.



60km N Karratha

Karijini National Park

The second largest national park in WA, Karijini is one of the most spectacular sights in the Pilbara. Set in the Hamersley Range, walk trails lead deep into breathtaking gorges, with crystal clear rock pools and waterfalls. The area is steeped in indigenous culture and the Karijini Visitor Centre gives insight into natural and cultural values of the park.

Gorges are picturesque but please heed all warning signs for your safety.



75km E Tom Price

Millstream-Chichester National Park

Located along the Fortescue River is the Millstream oasis, a haven for birdlife. It has a landscape of rolling hills, spectacular escarpments and winding tree-lined watercourses. The Chichester Range rises sharply from the coastal plain and includes rocky peaks, tranquil gorges and hidden rock pools.



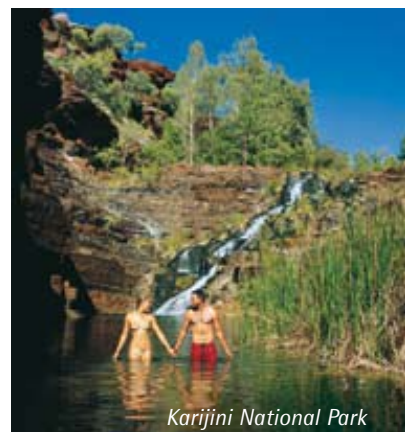
90km SE Karratha

Montebello Islands Marine Park

Turquoise green waters provide amazing diving and fishing experiences. They lace the white sandy beaches of this group of nearly 100 limestone islands. Some islands are a haven for threatened wildlife and quarantine measures are in place to protect these unique species.



125km W Karratha



Karijini National Park



Millstream-Chichester National Park

17	Badgingarra National Park						•		
18	Beekeepers Nature Reserve						•		
19	Cape Range National Park	•	•	•	•		•	•	•
20	Coalseam Conservation Park		•	•	•	•	•		
21	Francois Peron National Park	•	•		•	•	•	•	•
22	Hamelin Pool Marine Nature Reserve						•		
23	Jurien Bay Marine Park							•	•
24	Kalbarri National Park	•			•	•	•	•	•
25	Kennedy Range National Park		•		•		•		
26	Lesueur National Park						•	•	
27	Monkey Mia Reserve	•			•	•		•	•
28	Nambung National Park	•			•	•	•		•
29	Ningaloo Marine Park							•	•
30	Shark Bay Marine Park							•	•
31	Shell Beach Conservation Park				•			•	
32	Stockyard Gully National Park				•		•	•	

Overlooking low undulating plains with scattered scrub, this park boasts extensive wildflowers in spring. Experience this wonderland from an interpretive wildflower trail.



Beekeepers Nature Reserve

Visit Grigson's and Molah Hill lookouts. These are located near Indian Ocean Drive north and south of Jurien Bay. They offer stunning views of the coast and hinterland.



Cape Range National Park

Enjoy spectacular rocky gorges carved by ancient rivers that adjoin one of the most pristine and beautiful coastlines in the world. A highlight of any visit is a trip to Yardie Creek, which flows between sheer cliffs. Guided tours are available.



Coalseam Conservation Park

This park's acacia shrubland, with its sparse understorey, comes alive with 'everlasting' wildflowers after good winter rains. Marine fossils and seams of coal are exposed along the banks of the Irwin River.



Francois Peron National Park

This park offers rare wildlife and spectacular coastal scenery with dramatic contrasts of red cliffs, blue water and white beaches. The Peron Homestead can be accessed by 2WD and has an interpretive display in the old station overseer's quarters, a self-guided walk trail, picnic facilities and a hot tub where visitors can soak in artesian water. A high clearance 4WD is needed to explore the wilderness area beyond the homestead.



Hamelin Pool Marine Nature Reserve

Hamelin Pool is one of only two places in the world with living marine stromatolites, or 'living fossils'. A boardwalk with information panels gives a fascinating insight into the formation and geology of the stromatolites. Food, information and camping facilities are available at the adjacent Hamelin Pool Telegraph Station.



A photograph of a man and a woman walking through a vast field of bright yellow wildflowers. The man is wearing a blue jacket and the woman is wearing a red jacket. They are both looking towards the right side of the frame. In the background, there are several trees with green foliage under a clear blue sky. The text "Coalseam Conservation Park" is written in a white, serif font in the upper right corner of the image.

Jurien Bay Marine Park

Explore the islands and experience an incredible variety of marine life, including sea lions and dolphins, along the offshore reefs.



250km N Perth

Kalbarri National Park

Visitors can marvel at nature's ability to carve the landscape, explore the depths and heights of the river gorges and sea cliffs, admire the floral beauty of the rolling sand plains and discover the intriguing cultural history of the area. Magnificent wildflowers set the landscape ablaze with colour from July to November.

Gorges are picturesque but please heed all warning signs for your safety.



Kalbarri

Kennedy Range National Park

This park offers spectacular scenery of gorges and precipitous rock faces. The area still retains a wilderness feeling, and camping beneath the stark sandstone cliffs is an experience not to be missed.



240km E Carnarvon

Lesueur National Park

Lesueur ranks as one of the important reserves for flora conservation in WA with much of its exceptionally diverse flora found nowhere else in the world. The park boasts a scenic drive, lookouts and trails that let you discover the wildflowers and magnificent views.



20km NE Jurien Bay



Kalbarri National Park



Nambung National Park

Monkey Mia Reserve

For the chance to befriend enchanting bottlenose dolphins, a visit to Monkey Mia is a must. The dolphins are famous for their almost daily ritual of visiting the shore to interact with humans. Three generations of dolphins are now regular visitors to the beach.



26km NE Denham

Nambung National Park

Nambung features one of Australia's most fascinating landscapes, the Pinnacles Desert, where thousands of huge limestone pillars rise from the shifting yellow sands, resembling a landscape from a science fiction movie. The park also boasts beautiful beaches, coastal dune systems, shady groves of tuart trees and vibrant wildflowers.



245km N Perth

Ningaloo Marine Park

Whale sharks, turtles, dolphins, dugongs, manta rays, colourful tropical fish or sharks can be seen in abundance at the 300 km long reef, offering recreation from world class diving through to family snorkelling in sheltered lagoons.



10km N Exmouth

Shark Bay Marine Park

With more than 1500 km of meandering coastline, Shark Bay is Australia's largest marine embayment supporting a profusion of marine life. The landscape varies from rugged sea cliffs to tranquil lagoons and beaches of sand or shell. A visit to Eagle Bluff, a 300 m boardwalk along the cliff top, provides great vantage points for viewing marine life and coastal vistas.



Access via several boat ramps including Denham, Nanga and Monkey Mia

Shell Beach Conservation Park

Enjoy a walk along a beach like no other. Formed entirely of billions of tiny white sea shells, heaped into ridges up to 10 m deep, Shell Beach is unique because it's made up of shells of just one type of animal. The consolidated shells were once cut into blocks to construct a number of historic buildings in the area.



50km SE Denham

Stockyard Gully National Park

This park has a 300 m subterranean limestone tunnel, so come prepared with torches and protective clothing. The gully is usually dry but visitors are reminded to remain cautious as it is subject to flash flooding.



14km E Leeman



Ningaloo Marine Park



Shell Beach Conservation Park



Perth sites at a glance



Perth (page 30)

33	Avon Valley National Park	•	•		•		•	•		
34	Canning National Park							•		
35	Gooseberry Hill National Park								•	
36	Greenmount National Park									•
37	Helena National Park				•		•	•	•	
38	John Forrest National Park	•			•	•	•	•	•	
39	Kalamunda National Park							•	•	
40	Lane Poole Reserve		•	•	•	•	•	•	•	•
41	Lesmurdie Falls National Park				•				•	
42	Marmion Marine Park								•	•
43	Mundaring National Park				•		•	•		



Perth continued (page 30)

44	Pickering Brook National Park								•		
45	Serpentine National Park	•				•	•	•	•		
46	Shoalwater Islands Marine Park									•	•
47	Swan Estuary Marine Park								•	•	
48	Walyunga National Park	•				•	•	•	•		
49	Wandoo National Park					•	•	•	•		
50	Yalgorup National Park		•			•	•	•	•	•	
51	Yanchep National Park	•				•	•	•	•		
52	Penguin Island	•				•		•	•	•	
53	Perth Observatory	•				•					



Avon Valley National Park

Avon Valley National Park

This park features forests, granite outcrops, panoramic views over the Avon Valley and offers visitors the chance to see a wide variety of birds and wildlife. The Avon River flows in winter and spring churning over spectacular rapids.



80km NE Perth

Canning National Park

Predominantly jarrah forest, this park has high conservation values as it contains many flora and fauna species.



10km E Armadale

Gooseberry Hill National Park

The Zig Zag, a one way scenic drive, leads downhill through this park and provides amazing photography and bird watching opportunities.

16km E Perth

Greenmount National Park

Located on the slope of Greenmount Hill overlooking Perth, this park offers great opportunities for bushwalking, wildlife observation, sightseeing and photography.



20km NE Perth

Helena National Park

Visitors can enjoy 360-degree views, overlooking State forest and national park, from the popular recreation site of Mount Dale.



25km SE Kalamunda

John Forrest National Park

Magnificent vistas of the Swan coastal plain can be seen at WA's oldest national park. Visitors can experience walk trails through rugged wilderness, along the old railway line or to quiet pools and spectacular waterfalls.



20km NE Perth



John Forrest National Park



Serpentine National Park

Kalamunda National Park

Visitors will find high-quality walk trails in this park including the initial section of the Bibbulmun Track, along with lush forest scenery studded with granite boulder outcrops.



20km E Perth

Lane Poole Reserve

Pitching a tent in the picturesque jarrah forest by the Murray River is an experience that draws thousands of visitors back to Lane Poole every year.



15km SE Dwellingup

Lesmurdie Falls National Park

This park surrounds the 50 m cascading Lesmurdie Falls and has an extensive network of walk trails that lead to lookouts and vantage points providing excellent views of the falls.



15km E Perth

Marmion Marine Park

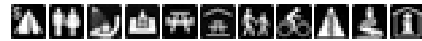
The clear shallow lagoons, reefs and tiny islands of this park are a playground for marine mammals, like the sea lions that rest on Little Island, as well as bottlenosed dolphins and humpback whales.



Perth

Mundaring National Park

This park is well known for its popular recreation sites including Fred Jacoby Park, North Ledge, Farrell Grove and South Ledge. The Golden View lookout provides panoramic views over Lake C Y O'Connor and Mundaring Weir.



40km E Perth

Pickering Brook National Park

The Munda Biddi Trail and Kattamorda Heritage Trail wind through this picturesque park making it popular for bushwalking and cycling.



10km SE Kalamunda

Serpentine National Park

This popular summer swimming spot is well known for the waterfall that cascades over a sheer granite face. It has the scenic beauty of ancient landforms and forest.



15km W Jarrahdale

Shoalwater Islands Marine Park

Encompassing not only an incredibly rich and diverse marine environment, this park also surrounds a chain of unique limestone islands where bottlenose dolphins are extremely common. Guided tours are available.



50km S Perth



Shoalwater Islands Marine Park

Swan Estuary Marine Park

With its scenic foreshore this park forms a striking setting for the city of Perth. Bird watching is popular in summer when more than 10,000 wader birds pass through.



Perth

Walyunga National Park

Boasting picturesque views of Perth, this park provides one of Australia's best white water canoeing courses, sensational wildflowers in winter and spring, many native animals and rugged valley scenery.



30km NE Perth

Wandoo National Park

Predominant features are wandoo forest and granite outcrops. Visitors can enjoy picnic facilities at the popular Mount Observation recreation site.



80km E Perth

Yalgorup National Park

Occupying a narrow coastal strip of land, this park protects 10 lakes, which harbour a large variety of bird life and amazing thrombolite living fossils.



50km S Mandurah



Yalgorup National Park



Yanchep National Park

Yanchep National Park

Experience an array of attractions including caves, walk trails, wild kangaroos, protected koala colonies, a stunning array of spring wildflowers, manicured lawns, Tudor style buildings and cultivated native gardens. There is a diverse range of activities on offer for visitors including cave tours, boat tours and Aboriginal cultural experiences.



50km N Perth

Tourism attractions

Penguin Island

Home to a diverse array of wildlife as well as breathtaking marine and coastal scenery, Penguin Island is unique because it is home to the largest colony of little penguins on the west coast. The Penguin Experience Island Discovery Centre allows visitors to see penguins up close, and learn about them through feedings, commentaries and displays. Ph (08) 9592 5191. Guided tours are available.



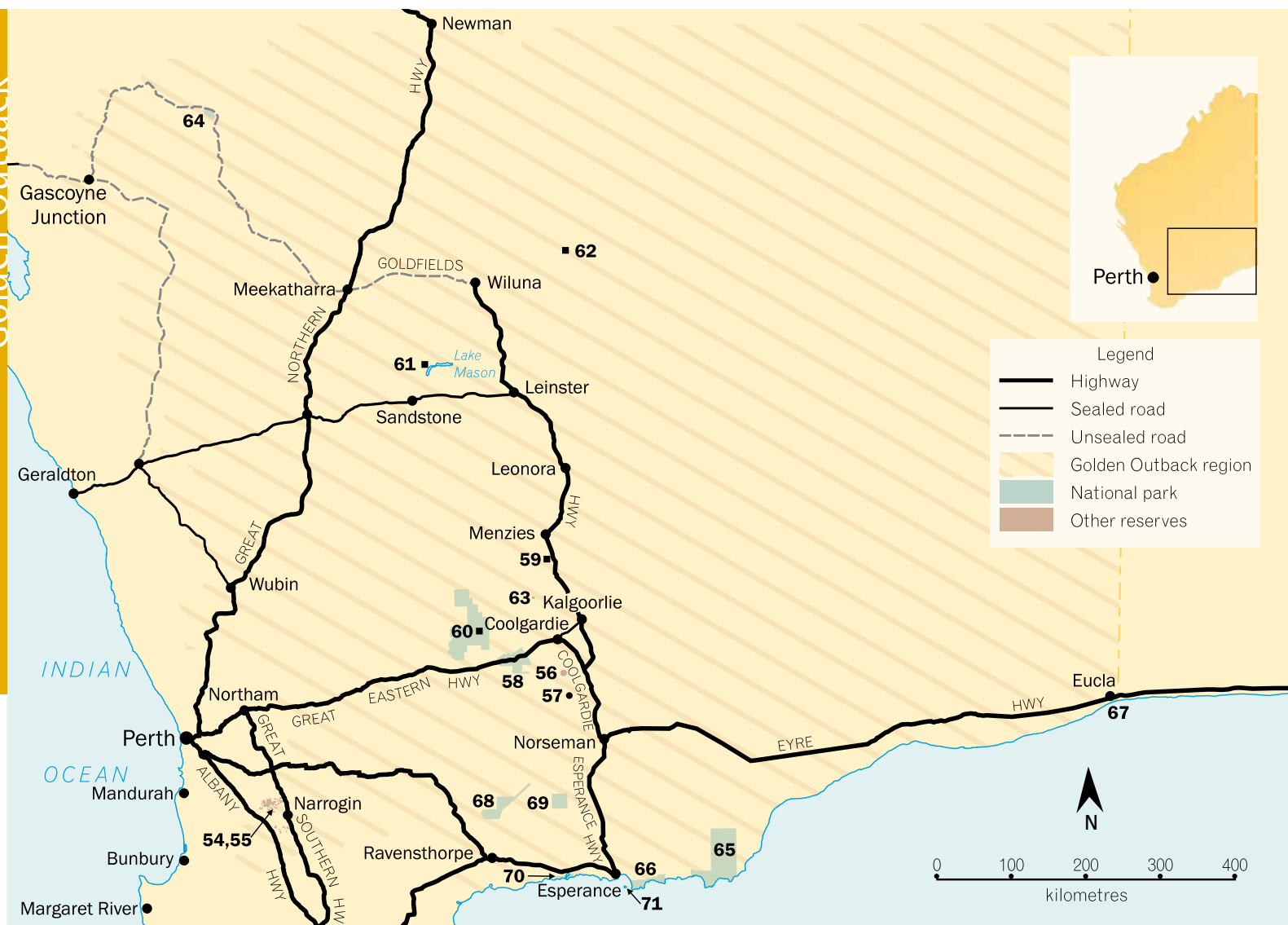
50km S Perth

Perth Observatory

View the wonders of the southern skies with the astronomers at Perth Observatory - Australia's oldest continuously operating professional observatory and WA's premier astronomical institution. Providing information and education services, and conducting internationally recognised research, the observatory also has star viewing nights, daytime guided tours, astronomy workshops and field nights. Ph (08) 9293 8255 for a booking.



25 km E Perth



Golden Outback sites at a glance



Wheatbelt (page 38)

54 Dryandra Woodland		•		•	•	•	•		
55 Barna Mia	•			•			•		

Goldfields (page 39)

56 Burra Rock Nature Reserve		•		•		•	•		
57 Cave Hill		•		•		•	•		
58 Goldfields Woodlands National Park		•	•			•	•		
59 Goongarrie Station	•	•	•	•		•	•		
60 Jaurdi Station	•	•		•		•	•		
61 Lake Mason	•	•	•	•	•	•	•		
62 Lorna Glen	•	•		•		•			
63 Rowles Lagoon Conservation Park		•	•	•		•	•	•	



Midwest (page 40)

64 Mount Augustus National Park				•				•	
---------------------------------	--	--	--	---	--	--	--	---	--

Esperance (page 42)

65 Cape Arid National Park	•	•	•	•	•	•	•	•	•
66 Cape Le Grand National Park	•	•	•	•	•	•	•	•	•
67 Eucla National Park									
68 Frank Hann National Park									
69 Peak Charles National Park		•		•			•		
70 Stokes National Park	•	•		•	•	•	•	•	•
71 Woody Island Nature Reserve	•	•		•	•	•	•	•	•



Dryandra Woodland

Wheatbelt

Dryandra Woodland

Dryandra Woodland's powder bark wandoo and kwongan heath is home to numbats, woylies and more than 100 species of birds. Being one of the prime places in the south-west for viewing native wildlife, it is an especially scenic area with magnificent woodlands and spectacular wildflowers in spring.



26km NW Narrogin

Barna Mia

Nestled in the heart of Dryandra Woodland, Barna Mia is an animal sanctuary where visitors can discover threatened native marsupials such as the bilby, boodie, bandicoot and hare-wallabies while on a guided nocturnal tour. For details and bookings ph (08) 9881 9200.



36km NW Narrogin



Barna Mia

Goldfields

Burra Rock Nature Reserve

A welcoming sight on a hot day is the Burra Rock Dam and rock catchment area. A short climb to the summit of the rock rewards visitors with a great view over the regenerated woodlands that stretch as far as the eye can see.



60km S Coolgardie

Cave Hill

Dominated by a spectacular granite outcrop, with a large cave and wave formation, Cave Hill is an excellent camping spot.



90km S Coolgardie

Goldfields Woodlands National Park

The Golden Pipeline Heritage Trail provides a tourist route through this park incorporating different biological and historical features along the historic railway and pipeline. Popular campsites include Boondi and Victoria Rock.



60km W Coolgardie

Goongarrie Station

Goongarrie has a rich cultural history with many important Aboriginal sites. It has holes, graves, watering points and a long history of prospecting, mineral exploration and mining. The homestead is an ideal place to camp.



90km N Kalgoorlie

Jaurdi Station

Sightseeing, walking, photography, nature study, environmental education, 4WD trips and catching yabbies are all popular pastimes at this former pastoral station. Kitchen facilities available.



175km W Kalgoorlie

Lake Mason

Lake Mason offers camping facilities around the homestead and shearers quarters. Bookings can be made through DEC's Kalgoorlie office. Bush camping is also permitted throughout the reserves with approval from DEC's Kalgoorlie office.



50km N Sandstone

Lorna Glen

Nestled among the river gums, near the highest part of the WA inland plateau, the Lorna Glen homestead is an ideal camping location with self-contained bunkhouse accommodation and facilities. Bush camping is allowed with permission from DEC.



150km NE Wiluna

Rowles Lagoon Conservation Park

When the lagoon is full this popular park offers excellent opportunities for water-based recreation and is also a bird watcher's paradise.



73km N Coolgardie

Midwest

Mount Augustus National Park

At 1105 m Mount Augustus is one of the Australia's most amazing peaks with ancient rock formations, Aboriginal art sites and a range of short and full day walks.



480km NE Carnarvon



Mount Augustus National Park

Esperance

Cape Arid National Park

This exceptionally scenic park boasts a range of landscapes from pristine beaches and magnificent coastal scenery to granite outcrops and inland arid vegetation as well as several ruins and small mountains providing superb lookouts.



120km E Esperance

Cape Le Grand National Park

Wild coastal scenery, rugged granite peaks and sweeping heathlands characterise this park. Popular features include attractive bays with white sandy beaches set between rocky headlands. Kitchen facilities available.



50km E Esperance

Eucla National Park

Located against the head of the Great Australian Bight, highlights of this park include the vast Delisser Sandhills and Wilson Bluff, a high limestone cliff providing an inspiring view of the awesome coast.

920km E Esperance



Cape Le Grand National Park



Eucla National Park

Frank Hann National Park

This 60,000-ha park is made up of moorland, heathland and scrubland flora, which in spring boasts an array of attractive wildflowers.

100km N Ravensthorpe

Peak Charles National Park

Peak Charles, an ancient granite peak and its companion, Peak Eleanora, provide superb views of the dry sandplain heaths and salt lake systems. Wildflowers are abundant in season.



174km NW Esperance

Stokes National Park

Stokes Inlet, is one of the most picturesque and interesting estuaries along WA's southern coast.



80km W Esperance

Woody Island Nature Reserve

This reserve, part of the Recherche Archipelago, is one of more than 100 islands that dot the coastline off Esperance. It has abundant wildlife and large shady eucalyptus trees. A swimming platform with a water slide in the bay, and an underwater snorkel trail, make it an aquatic playground. Guided tours, playground and kitchen facilities are also available.



15km S Esperance



South West sites at a glance



Wellington (page 46)

72 Hoffman Mill Recreation Site	•	•	•	•	•	•	•	•
73 Leschenault Peninsula Cons. Park	•	•	•	•	•	•	•	•
74 Logue Brook Dam	•	•	•	•	•	•	•	•
75 Wellington National Park	•	•	•	•	•	•	•	•

Blackwood (page 47)

76 Blackwood River National Park	•	•	•	•	•	•	•	•
77 Bramley National Park	•	•	•	•	•	•	•	•
78 Leeuwin-Naturaliste National Park	•	•	•	•	•	•	•	•
79 Scott National Park	•	•	•	•	•	•	•	•
80 St John Brook Conservation Park	•	•	•	•	•	•	•	•
81 Tuart Forest National Park	•	•	•	•	•	•	•	•
82 Calgardup Cave	•	•	•	•	•	•	•	•
83 Giants Cave	•	•	•	•	•	•	•	•

Warren (page 49)

84 Beedelup National Park	•	•	•	•	•	•	•	•
85 Big Brook Dam	•	•	•	•	•	•	•	•
86 Boorara-Gardner National Park	•	•	•	•	•	•	•	•
87 D'Entrecasteaux National Park	•	•	•	•	•	•	•	•
88 Gloucester National Park	•	•	•	•	•	•	•	•
89 Greater Beedelup National Park	•	•	•	•	•	•	•	•
90 One Tree Bridge Conservation Park	•	•	•	•	•	•	•	•

Warren continued (page 51)

91 Warren National Park	•	•	•	•	•	•	•	•
92 Karri Forest Explorer Drive	•	•	•	•	•	•	•	•
93 Perup . . . Nature's guesthouse	•	•	•	•	•	•	•	•

Walpole Wilderness Area (page 52)

94 Mt Frankland National Park	•	•	•	•	•	•	•	•
95 Mt Frankland (South) National Park	•	•	•	•	•	•	•	•
96 Mt Lindesay National Park	•	•	•	•	•	•	•	•
97 Shannon National Park	•	•	•	•	•	•	•	•
98 Walpole-Nornalup National Park	•	•	•	•	•	•	•	•
99 William Bay National Park	•	•	•	•	•	•	•	•
100 Valley of the Giants, Tree Top Walk	•	•	•	•	•	•	•	•
101 Walpole Wilderness Discovery Centre	•	•	•	•	•	•	•	•

Albany (page 54)

102 Fitzgerald River National Park	•	•	•	•	•	•	•	•
103 Gull Rock National Park	•	•	•	•	•	•	•	•
104 Porongurup National Park	•	•	•	•	•	•	•	•
105 Stirling Range National Park	•	•	•	•	•	•	•	•
106 Torndirrup National Park	•	•	•	•	•	•	•	•
107 Two Peoples Bay Nature Reserve	•	•	•	•	•	•	•	•
108 Waychinicup National Park	•	•	•	•	•	•	•	•
109 West Cape Howe National Park	•	•	•	•	•	•	•	•



Wellington National Park. Photo – DEC

Wellington

Hoffman Mill Recreation Site

Follow bush walk trails through the forest to discover more about this beautiful area or just sit and admire the crystal clear creek. Open for camping between 1 November and Easter.



27km NE Harvey

Leschenault Peninsula Conservation Park

Situated between Leschenault Estuary and the Indian Ocean, this 14 km coastal strip offers easy access to the beach where visitors can fish, swim or just relax in the sun. Learn about the history of the park at the Belvidere or John Boyle O'Reilly sites.



20km N Bunbury

Logue Brook Dam

Set in the jarrah forest of the Darling Range, the clear waters of Lake Brockman provide water sports enthusiasts and nature lovers with excellent swimming, canoeing and water-skiing opportunities. Marron and trout fishing are popular (in season and with a permit) and boats can be launched on the southern shore.



16km NE Harvey

Wellington National Park

Discover the rich history and beautiful natural environment associated with the construction of the Wellington Weir in 1932. Experience the breathtaking views across calm waters and down the picturesque valley from the dam lookout. Visit Honeymoon Pool and Potters Gorge, both popular camping sites, to enjoy fishing and catching marron in season with a permit.



20km W Collie

Blackwood

Blackwood River National Park

Explore the beautiful Blackwood River and its tributaries. Visitors can camp or picnic at either Sue's Bridge or Warner Glen Recreation Site. Discreet camping areas are dotted through the forest, with some sites at Sue's Bridge (kitchen facilities available) allowing caravan access.



25km E Margaret River

Bramley National Park

Explore the wonders of the karri forest on walk and cycle trails or enjoy a picnic at Rusden picnic site.



Margaret River

Be captivated walking the 135 km Cape to Cape Track that connects the lighthouses at Cape Naturaliste and Cape Leeuwin. It traverses spectacular coastal scenery with fascinating geology and wonderful spring wildflowers. Admire ghostly karri trees at Boranup Forest or explore the caves with their intricate decorations. Kitchen facilities available at Contos campground.



This park boasts attractive floral displays but is only accessible via foot or boat. With boat access, a picnic can be enjoyed at Twinhams Bend where there are barbecues, tables and toilets.



St John Brook flows through this park, which has many significant natural and cultural values. Barrabup and Workers Pool were popular swimming areas for residents and workers of the Barrabup mill early last century and remain popular today.

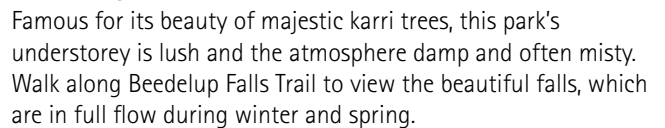


This park protects the largest remaining pure forest of tuart in the world and boasts a number of beautiful tourist scenic drives.



View a magnificent range of coloured calcite crystal deposits, including fragile straws, walls of coloured flowstone, stalactites and stalagmites as well as a lake and stream. This cave is easily accessible to all ages, with boardwalks throughout.

Nestled in the magnificent karri trees of Boranup Forest lies one of the largest and deepest caves of the Leeuwin-Naturaliste Ridge – Giants Cave. This cave suits the more adventurous visitor who will need to scramble over rock-falls and negotiate a series of ladders. Ph (08) 9757 7422.



Calgardup Cave. Photo – DEC

Big Brook Dam

Big Brook Dam is one of the most picturesque places in karri country with views across the dam to the forest. There is a sandy beach area, which is great for swimming, and a sealed walk trail follows the shores of the dam allowing stroller and wheelchair access.



5km NW Pemberton

Boorara-Gardner National Park

The Boorara Tree, a disused 50 m high fire lookout, provides a lovely spot for a picnic. From the tree visitors can follow the walk trail to enjoy magnificent wildflowers in season and discover the spectacular Lane Poole Falls on the Canterbury River.



15km SE Northcliffe

D'Entrecasteaux National Park

Qualities of remoteness and pristine natural beauty are features of this popular park with spectacular coastal cliffs, beaches, mobile sand dunes, vast wildflower heaths and pockets of karri. The park has isolated beach campsites, wild coastal vistas and offers a multitude of excellent fishing spots.



28km SW Pemberton

Gloucester National Park

The 60 m high Gloucester Tree towering above the forest is WA's most famous karri tree. Lefroy Brook, set in the karri forest, provides a perfect place for a picnic, leisurely walk, or a few peaceful hours of fly-fishing.



3km S Pemberton



Gloucester National Park

Greater Beedelup National Park

The 86 km Karri Forest Explorer Drive meanders its way through the Giblett Forest on its way through a patchwork of towns, forests, farmland and vineyards with interpretive signage along the way. Tune in your car radio to 100FM to enjoy your guided driving experience.



15km NW Pemberton

One Tree Bridge Conservation Park

Containing areas of old growth karri forest and a section of the Donnelly River, the unique attraction of this park is a bridge made from the trunk of a single tree, a credit to the ingenuity of the area's pioneers.



20km W Manjimup

Warren National Park

The Dave Evans Bicentennial Tree and the one-way Heartbreak Trail along the Warren River are flanked by magnificent karri trees and are highlights of this park.



15km SW Pemberton

Tourist attractions

Karri Forest Explorer Drive

Travel through magnificent karri forest to explore this drive at your own pace. Stop for a picnic at Big Brook Dam, climb 60 m to the Gloucester Tree lookout, see Beedelup Falls from the suspension bridge, go bushwalking, go fishing or just sit and take in nature. Ph (08) 9776 1207.



Pemberton

Perup . . . Nature's guesthouse

This centre and wilderness lodge offers a spectacular wilderness experience. The forest is home to sizeable populations of many native mammals. Designed to give visitors a deeper knowledge and understanding of nature conservation and forest management, the centre is equipped to cater for school and community education activities, as well as nature-based tourism. To book ph (08) 9771 7988. Kitchen facilities are available.



55km ENE Manjimup, 55km SE Boyup Brook



Warren National Park

Walpole Wilderness Area

This area is a vast natural and wild landscape consisting of national parks and nature reserves. Sheer coastal cliffs, picturesque sandy beaches, tranquil inlets, meandering rivers, karri and tingle forests, diverse wetlands and imposing granite peaks mark this area.

Mt Frankland National Park

Visit one of the Walpole Wilderness Discovery Centre sites and enjoy a walk around the base of Mount Frankland or take a more strenuous climb to its peak for breathtaking views of the surrounding forested hills and valleys.



28km NE Walpole

Mt Frankland (South) National Park

Visit Swarbrick, one of three Walpole Wilderness Discovery Centre sites, and explore your perceptions of wilderness while wandering along a 500 m return forest art loop. Alternatively you can camp at the beautiful Fernhook Falls on Deep River, with spectacular falls in winter. Below the falls are walk trails, boardwalks and a stairway which provides safe access to the river for swimming and canoe launching. Fernhook Falls is 38 km north-west of Walpole.



8km N Walpole

Mt Lindesay National Park

This park protects many rare plants and offers visitors an opportunity to experience their beauty. A 10 km return walk trail from the carpark, across the Denmark River to the top of Mt Lindesay offers spectacular views.



20km N Denmark



Torus – Swarbrick, Mt Frankland (South) National Park

Shannon National Park

This park is set in some of the most magnificent karri country in WA's southern forest. Information shelters tell the story of the Shannon and visitors can listen to the park broadcasts on the radio at sign-posted stops around the Great Forest Trees Drive.



53km SE Manjimup

Walpole-Nornalup National Park

Deep rivers, majestic karri, unique tingle trees, waterfalls, an unspoilt coastline and the Tree Top Walk are just some of the features of this park. Don't forget to visit Circular Pool

for the raging river in winter and tranquil pool in summer and Conspicuous Cliff for its beautiful coastal scenery all year round. There are camping facilities at Crystal Springs and numerous picnic spots and caravan parks in the park.



40km S Walpole

William Bay National Park

This park, protecting a stunning coastline and forest, is renowned for its windswept granite rocks, which have a striking primeval appearance. Inside the reef, sheltered pools, channels and granite terraces create a fascinating seascape for beachcombing.



14km SW Denmark

Tourist attractions

Valley of the Giants, Tree Top Walk

Discover WA's famous forest of gigantic tingle trees which can only be seen in the forests surrounding the Tree Top Walk. This spectacular lightweight bridge, a world-renowned attraction, soars gently upwards, 40 m into the tingle foliage, before descending to the Ancient Empire Walk. Ph (08) 9840 8263.



18km E Walpole



Shannon National Park



Bluff Knoll, Stirling Range National Park

Walpole Wilderness Discovery Centre

The Valley of the Giants, Mt Frankland and Swarbrick make up the Walpole Wilderness Discovery Centre. An interpretive centre at the Valley of the Giants provides an overview of the wilderness area while a unique lookout at Mt Frankland provides intimate views of the core wilderness and an art loop at Swarbrick explores people's perceptions of forest and wilderness over time. Ph (08) 9840 1027.



18km E, 28km NE and 9km N Walpole respectively

Albany

Fitzgerald River National Park

Renowned for its biodiversity and rugged scenery, this park is blanketed with colour from August to November when hundreds of species of wildflowers are in bloom. During winter, southern right whales shelter close to shore with their newborn calves.



180km NE Albany

Gull Rock National Park

This park features popular beach areas and is home to several threatened species and is a visual backdrop to King George Sound.



35km E Albany

Porongurup National Park

Pathways lead through marri, jarrah and karri forest to reach the summits of weathered granite domes. From here there are panoramic views of the coastline, nearby Stirling Range, surrounding farmland and vineyards.



40km N Albany

Stirling Range National Park

Unique and abundant wildflowers, plus the brooding beauty of the mountain landscape, make this park one of the South West's most popular destinations. The pathways and impressive cliff faces of the park provide challenges to bushwalkers, climbers and abseilers.



100km NE Albany

Torndirrup National Park

The powerful Southern Ocean has sculpted spectacular coastal features known as 'The Gap' and the 'Natural Bridge' along the park's buffeted coastline. Windswept banksia and coastal heathland lie inland from granite headlands, limestone cliffs, sandy slopes and beaches.



10km S Albany

Two Peoples Bay Nature Reserve

This nature reserve protects unspoilt coastal vegetation and provides a vital habitat for threatened animal species. The reserve lies adjacent to Two Peoples Bay and is protected from the Southern Ocean by the granite massif headland of Mount Gardner.



35km E Albany

Waychinicup National Park

Bordering species-rich Mt Manypeaks, this small park is an important area for many native species including threatened birds. The sparkling inlet is fed by the Waychinicup River and by run off from the boulder-strewn hilltops and deeply incised gullies.



65km E Albany

West Cape Howe National Park

Dramatic cliffs of black dolerite, granite and limestone, sandy beaches and patches of karri forest are the features of this rugged park. Bushwalking, 4WD, fishing, hang-gliding and rock-climbing are popular activities.



30km W Albany



West Cape Howe National Park

Pets in parks

DEC's policy is that pets are not permitted in most national parks, conservation parks, nature reserves, marine parks and marine nature reserves.

However, dogs on a lead may be taken to certain areas within regional parks around Perth, most State forests (except Dryandra Woodland) and parts of Lane Poole Reserve.

There are many reasons for restricting dogs and cats in national parks and reserves. These include the need to protect native animals, consideration of the rights of other park users and regular baiting programs for the control of feral pests. These baits can kill domestic animals, so to ensure the safety of your pets, please leave them at home.

If in doubt as to whether you can take your dog onto DEC-managed land, contact your local DEC office (see Helpful contacts on page 59).

Safety in parks

Please remember, your safety is our concern, but your responsibility!

Plan ahead

- Check park, road and weather conditions before you leave (see Helpful contacts on page 59).
- Make sure your vehicle is in good working condition.

Provide travel advice

- Notify family or friends of travel intentions.
- Provide an itinerary and travel route.
- Determine a schedule of contact to be kept.
- Decide upon actions required if contact is not made at predetermined times.
- Advise of changes.

Take the right equipment

- Ensure your camping equipment is in good working order and take a good tent and sleeping bag appropriate to the conditions.
- Take essential supplies including first aid kit, torch, matches, extra fuel and plenty of food and water.
- Bring extra clothing and wet weather gear as weather can turn quickly.
- Mobile phones can be useful but don't rely on them for safety as many parks have limited or unpredictable coverage. It is recommended that if possible, a satellite phone is carried with you, particularly if you intend on doing extended walks. A GPS and EPIRB can also be useful safety measures.

Drive carefully

- Follow road rules whenever you are driving.
- Watch for oncoming traffic and pedestrians and share the road.

- Particular care should be taken when driving on gravel.
- Pull off the road before stopping to take photos.

Stay on the track

- Keep to tracks.
- Take a map if possible.
- Follow markers and signs carefully.

Watch your step

- Watch for falling branches and rocks, uneven or slippery surfaces, and cliff edges.
- Always stay behind safety fences.
- Comply with signage.

Drinking water and water catchments

- The purity of water from any water source within a park cannot be guaranteed and cannot be depended on for drinking water.
- Please ensure you take plenty of water.

Take care near water

- Swim with extreme caution. Rivers and park beaches are not patrolled. Before swimming, check water depth, current and temperature.
- In tropical waters during summer, check for the presence of jelly fish.
- In waters north of Port Hedland, and rivers in the Kimberley, beware of the presence of crocodiles.
- Never dive or jump into the water as there may be hidden logs or rocks.
- Supervise children closely.

Safe fishing

- Watch out for freak waves and swells.
- Do not fish alone.
- Heed warning signs.
- Undercut cliffs are often prone to collapse due to wave action and weathering.
- Be wary of strong wind and slippery rocks.

Avoid bites, stings and scratches

- Wear protective clothing and insect repellent to protect you from stings, scratches and insect bites, especially bites from ticks.

Look, lock and leave

- If you leave your vehicle unattended lock it completely and don't leave any valuables in the car.

Be sun-smart

- Wear a hat, shirt and sunscreen, even on overcast days, to avoid sunburn.
- Drink water frequently to avoid dehydration.

Fire Safety

Fires occur in natural areas. In the unlikely event of a wildfire visitors should:

- contact the local DEC or National Park office and/or alert the local ranger or Emergency Services (000) immediately to report it;
- safely leave the affected area as instructed by the local ranger or as soon as is practicable;
- heed all instructions and advice from the local rangers and DEC office;
- tune into ABC radio for updates on fires or other incidents; and
- phone 1300 657 209 for updated recorded messages from the Fire and Emergency Services Authority (FESA).

Emergency information

- For all emergencies, contact Emergency Services (Police) on 000 (911 on some mobiles).
- For non-emergency situations contact the Police on 131 444.
- Improved phone coverage can sometimes be achieved from the top of hills.

What's in a name?

National park

National parks are areas that have national significance for scenic, cultural or biological values, and can accommodate recreation that is consistent with maintaining these values.

Conservation park

Conservation parks are managed identically to national parks but mostly have regional or local, rather than national significance.

Nature reserve

Nature reserves are terrestrial areas set aside for the primary purpose of conservation. They are managed to maintain and restore the natural environment, and to protect, care for and promote the study of indigenous flora and fauna.

Marine park

Marine parks are created to protect the area's natural features and maintain its beauty while enabling compatible recreation and commercial activities.

State forest

State forest containing indigenous vegetation is managed for purposes such as recreation and nature conservation, the protection of water-catchments and the production of a sustainable harvest of timber.

Further information on all of the parks listed in this guide can be obtained by calling the department's information line on (08) 9334 0333 or by visiting www.naturebase.net.

Helpful contacts

For more information on parks and reserves visit:

DEC Customer Service Centre

17 Dick Perry Ave, Kensington
Ph (08) 9334 0333
www.naturebase.net

For tours, accommodation and other regional tourism attractions visit:

Western Australian Visitor Centre

Forrest Place (Cnr Wellington St), Perth
Ph 1300 361 351
www.westernaustralia.com

DEC Visitor Centres

Karijini Visitor Centre

Banjima Drive,
Karijini National Park
Ph (08) 9189 8121

Purnululu Visitor Centre

Open 1 April – 15 October
Ph (08) 9168 7300

Monkey Mia Visitor Centre

Monkey Mia Reserve
Ph (08) 9948 1366

Perth Hills National Parks Centre

Allen Rd, Mundaring
Ph (08) 9295 2244

Milyering Visitor Centre

Cape Range National Park
Ph (08) 9949 2808

Walpole Wilderness Discovery Centre

Ph (08) 9840 1027

DEC District Offices

Albany	(08) 9842 4500	Karratha	(08) 9182 2002
Broome	(08) 9195 5500	Kununurra	(08) 9168 4200
Bunbury	(08) 9725 4300	Merredin	(08) 9041 2488
Busselton	(08) 9752 5555	Mundaring	(08) 9295 1955
Collie	(08) 9734 1988	Narrogin	(08) 9881 9200
Esperance	(08) 9083 2100	Pemberton	(08) 9776 1207
Exmouth	(08) 9949 1676	Shark Bay	(08) 9948 1208
Geraldton	(08) 9921 5955	Wanneroo	(08) 9405 0700
Jurien Bay	(08) 9652 1911	Walpole	(08) 9840 1027
Kalgoorlie	(08) 9080 5555		

WILDCARE helpline – For sick and injured native wildlife

Ph (08) 9474 9055

Wildlife Watch – For reporting illegal wildlife activity

Freecall 1800 449 453

Avon Valley National Park	30	Fitzgerald River National Park	54
Badgingarra National Park	22	Francois Peron National Park	23
Barna Mia	38	Frank Hann National Park	43
Beedelup National Park	49	Geikie Gorge National Park	16
Beekeepers Nature Reserve	22	Giants Cave	49
Beeliar Regional Park	10	Gloucester National Park	50
Big Brook Dam	50	Goldfields Woodlands National Park	39
Blackwood River National Park	47	Goongarrie Station	40
Boorara-Gardner National Park	50	Gooseberry Hill National Park	30
Bramley National Park	47	Greater Beedelup National Park	51
Burra Rock Nature Reserve	39	Greenmount National Park	30
Calgardup Cave	49	Gull Rock National Park	54
Canning National Park	30	Hamelin Pool Marine Nature Reserve	23
Canning River Regional Park	10	Helena National Park	31
Cape Arid National Park	42	Herdsmen Lake Regional Park	11
Cape Le Grand National Park	42	Hoffman Mill Recreation Site	46
Cape Range National Park	22	Jandakot Regional Park	11
Cave Hill	39	Jaurdi Station	40
Coalseam Conservation Park	22	John Forrest National Park	31
D'Entrecasteaux National Park	50	Jurien Bay Marine Park	24
Dampier Archipelago	18	Kalamunda National Park	32
Dryandra Woodland	38	Kalbarri National Park	24
Drysdale River National Park	14	Karijini National Park	18
Eucla National Park	42	Karri Forest Explorer Drive	51
		Kennedy Range National Park	24
		King Leopold Range Conservation Park to Mt Hart	16
		King Leopold Range Conservation Park to Silent Grove	16
		Lake Mason	40
		Lane Poole Reserve	32
		Leeuwin-Naturaliste National Park	48
		Leschenault Peninsula Conservation Park	46
		Lesmurdie Falls National Park	32
		Lesueur National Park	24
		Logue Brook Dam	46
		Lorna Glen	40
		Marmion Marine Park	32

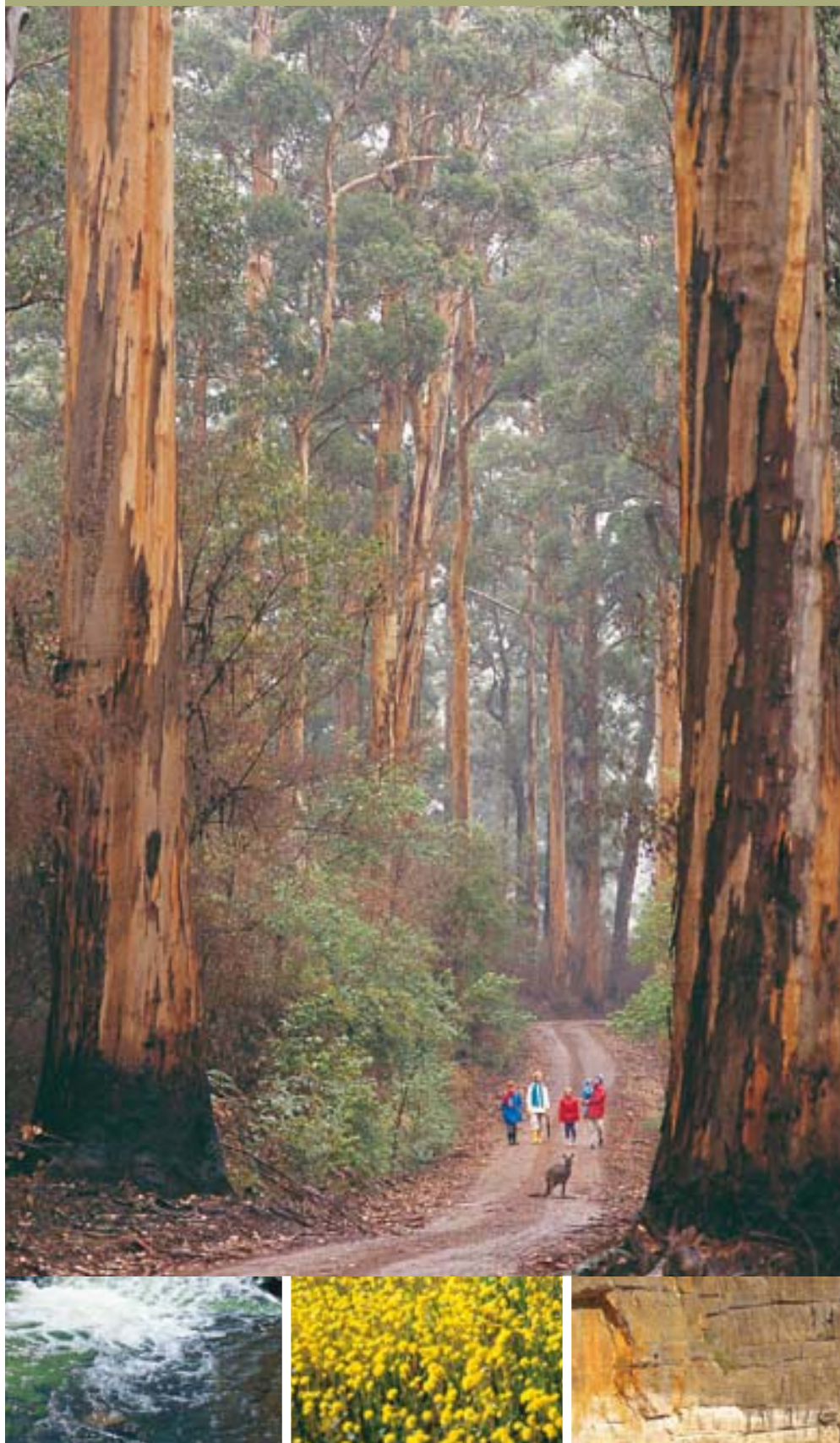


Fitzgerald River National Park

Millstream-Chichester National Park	19	Torndirrup National Park	55
Mirima National Park (Hidden Valley)	14	Tuart Forest National Park	48
Mitchell River National Park	14	Tunnel Creek National Park	17
Monkey Mia Reserve	25	Two Peoples Bay Nature Reserve	55
Montebello Islands Marine Park	19	Valley of the Giants, Tree Top Walk	53
Mount Augustus National Park	40	Walpole Wilderness Discovery Centre	54
Mt Frankland (South) National Park	52	Walpole-Nornalup National Park	53
Mt Frankland National Park	52	Walyunga National Park	34
Mt Lindesay National Park	52	Wandoo National Park	34
Mundaring National Park	33	Warren National Park	51
Nambung National Park	25	Waychinicup National Park	55
Ningaloo Marine Park	26	Wellington National Park	47
One Tree Bridge Conservation Park	51	West Cape Howe National Park	55
Parry Lagoons Nature Reserve	15	William Bay National Park	53
Peak Charles National Park	43	Windjana Gorge	17
Penguin Island	35	Wolfe Creek Meteorite Crater Reserve	15
Perth Observatory	35	Woodman Point Regional Park	11
Perup . . . Nature's guesthouse	51	Woody Island Nature Reserve	43
Pickering Brook National Park	33	Yalgorup National Park	34
Porongurup National Park	54	Yanchep National Park	35
Purnululu National Park (Bungle Bungles)	15	Yellagonga Regional Park	11
Regional Parks of the Darling Range	11		
Rockingham Lakes Regional Park	11		
Rowles Lagoon Conservation Park	40		
Rowley Shoals Marine Park	16		
Scott National Park	48		
Serpentine National Park	33		
Shannon National Park	53		
Shark Bay Marine Park	26		
Shell Beach Conservation Park	27		
Shoalwater Islands Marine Park	33		
St John Brook Conservation Park	48		
Stirling Range National Park	55		
Stockyard Gully National Park	27		
Stokes National Park	43		
Swan Estuary Marine Park	34		



Egle Bluff, Shark Bay Marine Park



This booklet is printed on paper manufactured from Australian timber plantations under strict environmental guidelines.