

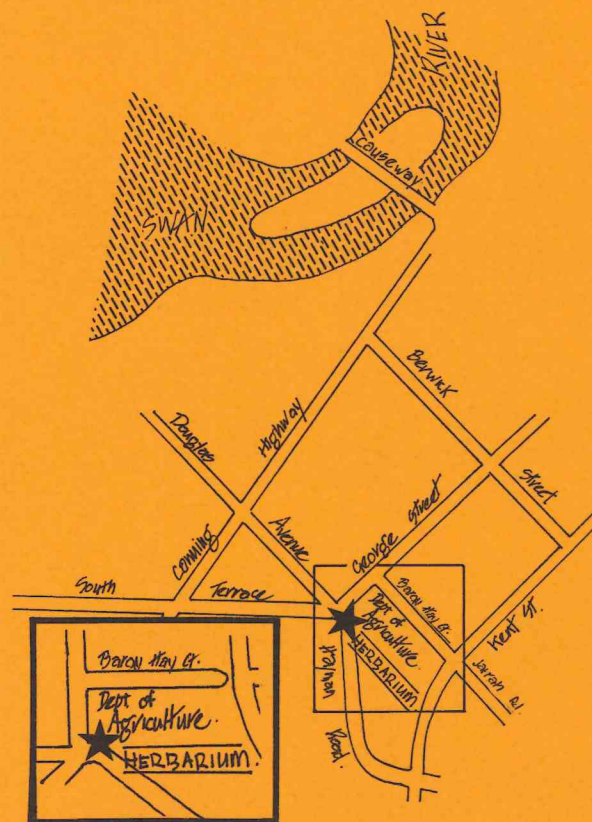
LIBRARY

Department of Biodiversity,
Conservation and Attractions

This PDF has been created for digital preservation. It may be used for research but is not suitable for other purposes. It may be superseded by a more current version or just be out-of-date and have no relevance to current situations.

The Reference Herbarium is housed in the Western Australian Herbarium building, George Street, South Perth. It is open Mondays to Fridays (public holidays excepted) 8.30 a.m. to 4.30 p.m.

Groups wanting to use the Reference Herbarium may book by contacting 368 3418 during office hours.



A Community Employment Program Project

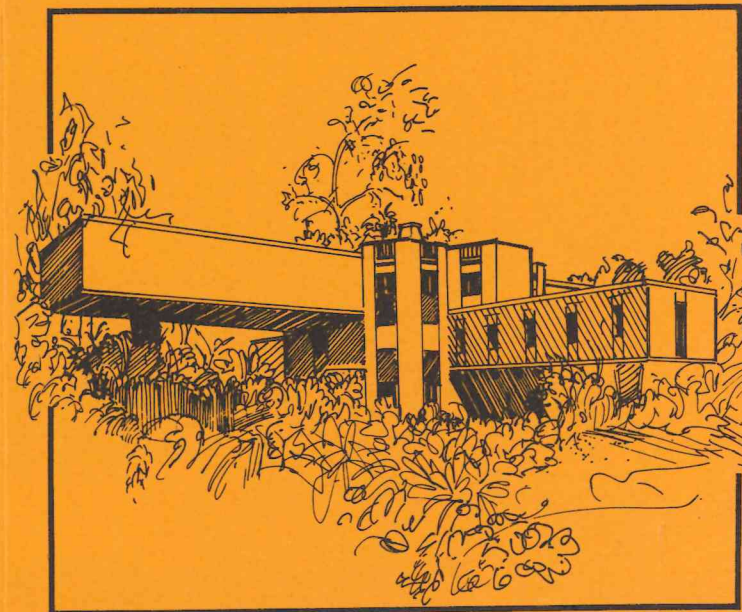
C.E.P. Project Staff
 JEANETTE NEDEN
 ANN LAMBERT
 NERIDA HOYLE
 LEE NUNN
 MEAGAN CARTER
 SHEILA KENNY
 STUART EVERETT
 HUONG T. HO
 KARINA KNIGHT



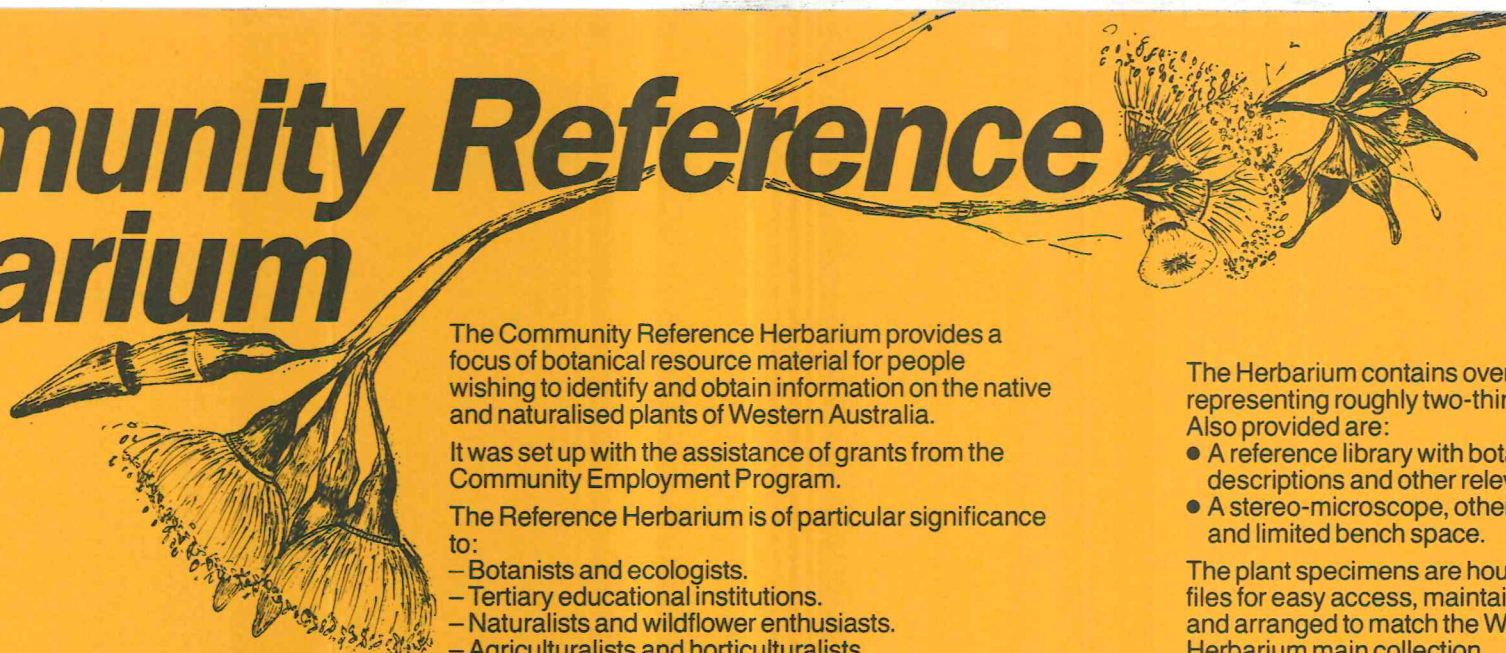
Western Australian
 Department of
 Agriculture

COMMUNITY REFERENCE HERBARIUM

WESTERN AUSTRALIAN HERBARIUM



Community Reference Herbarium



The Community Reference Herbarium provides a focus of botanical resource material for people wishing to identify and obtain information on the native and naturalised plants of Western Australia.

It was set up with the assistance of grants from the Community Employment Program.

The Reference Herbarium is of particular significance to:

- Botanists and ecologists.
- Tertiary educational institutions.
- Naturalists and wildflower enthusiasts.
- Agriculturalists and horticulturalists.

The Herbarium contains over 5000 named specimens representing roughly two-thirds of the State's flora. Also provided are:

- A reference library with botanical keys, species descriptions and other relevant information.
- A stereo-microscope, other necessary equipment and limited bench space.

The plant specimens are housed in upright lever arch files for easy access, maintained in systematic order and arranged to match the Western Australian Herbarium main collection.

