

LIBRARY

Department of Biodiversity,
Conservation and Attractions

This PDF has been created for digital preservation. It may be used for research but is not suitable for other purposes. It may be superseded by a more current version or just be out-of-date and have no relevance to current situations.

DISCOVERING THE KIMBERLEY

SEASONS

In the Kimberley the 'wet' and the 'dry' seasons are easily recognised. They are separated by transitional seasons. The 'wet' season is preceded by the October to December 'build-up' and usually extends over the months of January to March. The rest of the year is the 'dry', in which rainfall is unusual. During the 'wet' many of the parks in the region are closed as roads are impassable and weather conditions are very hot and humid.

ROAD CONDITIONS

For information on roads in the Kimberley, ring Main Roads on 1800 013314. For roads in national parks or reserves, ring the nearest CALM office.

BOATING—GEIKIE GORGE

Private boats and canoes are permitted access to the gorge only after 4.30 in the afternoon. You must notify rangers prior to launching your boat.

IBIS AERIAL HIGHWAY

The Ibis Aerial Highway links major attractions of the Kimberley with stopovers and ground tours. CALM-managed features at Purnululu, Geikie Gorge, Windjana Gorge, Mt Hart and Silent Grove are all part of the aerial highway, along with many other destinations. For bookings and information, call tour companies and tourist centres.

PARK PASSES

Passes are available for entry into national parks in Western Australia. They are available from CALM offices and other tourist outlets. These passes do not cover camping fees in national parks or entry to the Tree Top Walk near Walpole.

BE CROCODILE WISE

Two species of crocodile are found in Australia, the estuarine (or saltwater) and the freshwater crocodile. Both occur throughout the Kimberley and both species are protected. Since crocodiles can be dangerous please seek expert advice about them before camping, fishing or boating. The ranger on duty or the local CALM office can help.

PLEASE NOTE

- ❖ The Prince Regent River Nature Reserve is not available for recreation. Permits to enter are usually only granted for scientific reasons. Air tours can be arranged through tour operators.
- ❖ Mt Hart Homestead is managed privately for CALM and provides accommodation and meals. Advance bookings are essential. Call Taffy Abbotts on (08) 9191 4645.
- ❖ Please contact a CALM office to obtain information on access for the disabled in the Kimberley parks and reserves.

CARE OF THE KIMBERLEY

BE CAREFUL: Your safety in natural environments is our concern, but your responsibility.

BE CLEAN: Please take your litter with you.

BE COOL: Don't cause a bush fire. Please use your own portable gas stove if there are no barbecues. Comply with all instructions in the use of open fires.

BE CAUTIOUS: Stay on the roads, tracks and trails to protect the fragile landscape.

BE CONSIDERATE: Do not disturb animals, plants or rocks. Pets and firearms are not permitted in parks and reserves.

FURTHER INFORMATION

We are pleased to help make your visit safe, enjoyable and informative. Contact us if you need more information.



Department of Conservation
and Land Management

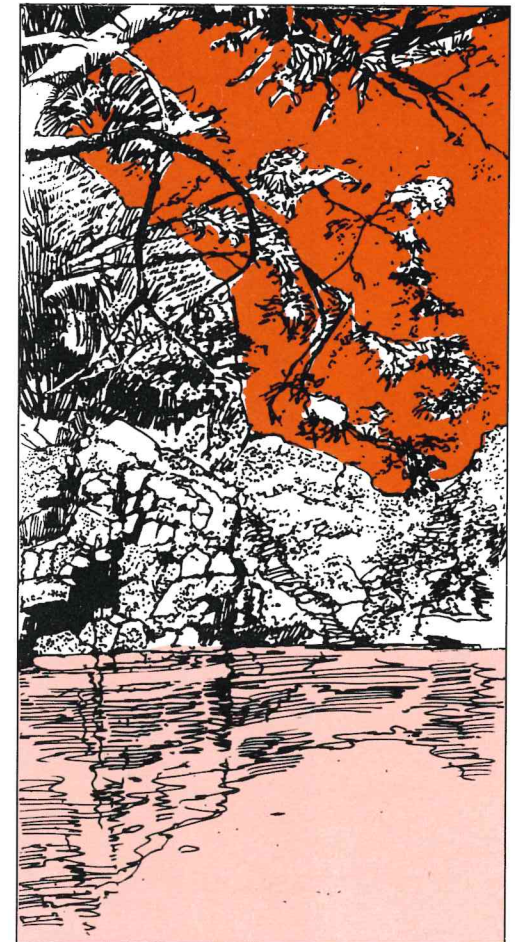
Kimberley Regional Office
Messmate Way and Konkerberry Way
PO Box 942
KUNUNURRA WA 6743

Ph: (08) 9168 0200
Fax: (08) 9168 2179

Recreation Guide

THE KIMBERLEY

Parks & Reserves



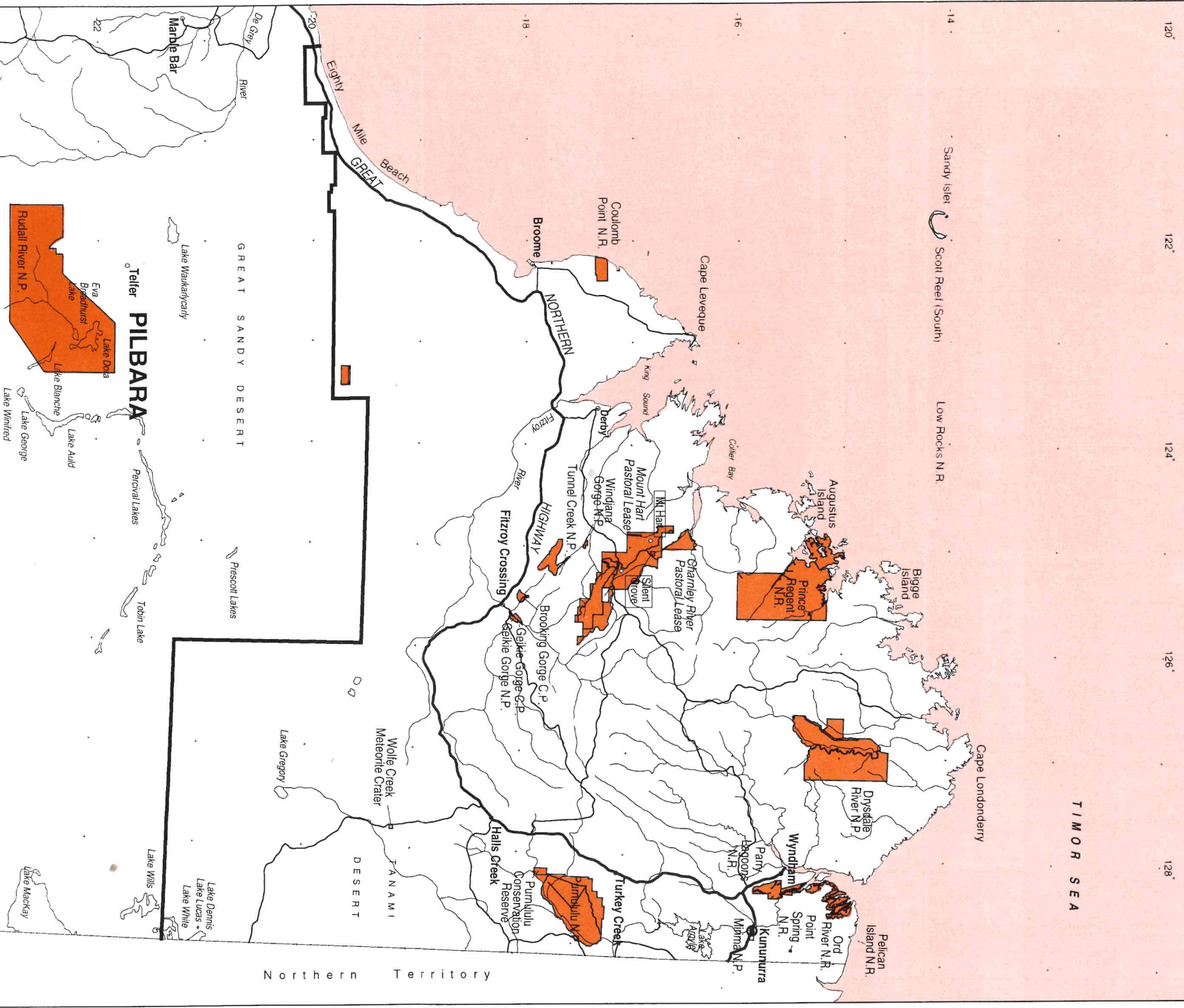
DEPARTMENT OF CONSERVATION
AND LAND MANAGEMENT

PAM03648

CALM Managed Lands in the Kimberley Region



Information Management Branch
Geospatial Section



KIMBERLEY REGION

DEPARTMENT OF CONSERVATION AND LAND MANAGEMENT WA

PARKS AND RESERVES

	KIMBERLEY REGION NATIONAL PARKS (NP), NATURE RESERVES(NR), MARINE PARK(MP), RESERVES (RES) AND PASTORAL LEASE (PL).		FEES				OPEN Dry Season Wet Season		ACCESS						CAMPING				FACILITIES										ACTIVITIES										NEAREST TOWN (Approximate Distant Km)	CALM OFFICE	COMMENTS
			Entrance/Vehicle	Entrance/Motorcycle	Camping Per Night	Boat Cruises			4WD	2WD Seasonal	Buses Seasonal	Boat	Airport	Ibis Aerial Hwy	Non Generator	Generator	Caravan	Bush	Toilets	Showers	On Duty Ranger	Information Panel	Barbecues	Firewood	Water	Phone	Fuel	Food	Rubbish Bins	Walk Trails	Bushwalking	Photography	Sightseeing	Bird Watching	Boat Cruise	Slide Nights	Guided Walks	Cultural Tours			
	PURNULULU Adult Child Pensioner	NP	\$8 \$3	\$3 \$3	\$7 \$1 \$7	N/A	✓	X	✓	X	X	X	✓	✓	✓	X	X	✓	✓	✓	✓	✓	✓	✓	✓	✓	✓	✓	✓	✓	✓	✓	✓	✓	✓	✓	✓	Halls Creek (165Km) Warmun (105Km)	Kununurra	Closed Between 1st January and 31st March in the Wet Season.	
	MIRIMA Pensioner	NP	\$8 \$3	\$3 \$3	N/A	N/A	✓	✓	✓	✓	✓	X	X	X	X	X	X	✓	X	X	X	X	X	X	X	X	✓	✓	✓	✓	✓	X	✓	✓	X	X	X	Kununurra (2Km)	Kununurra	Day Use Only.	
	ARBORETUM	RES	Free	Free	N/A	N/A	✓	✓	✓	✓	✓	X	X	X	X	X	X	✓	X	✓	X	X	X	X	X	X	✓	X	✓	✓	✓	X	X	✓	X	X	X	Kununurra (.5Km)	Kununurra	Botanical Tree Garden.	
	DRYSDALE	NP	Free	Free	N/A	N/A	✓	X	✓	X	X	X	X	X	X	X	✓	X	X	X	X	X	X	X	X	X	X	✓	✓	✓	✓	✓	X	X	X	X	X	X	Wyndham (580Km)	Kununurra	Scenic overflights.
	PARRY LAGOONS	NR	Free	Free	N/A	N/A	✓	X	✓	✓	✓	X	X	X	X	X	X	✓	X	X	X	X	X	X	X	X	X	✓	✓	✓	✓	✓	X	X	✓	X	X	X	Wyndham (20Km)	Kununurra	Wetlands, Bird hide.
	POINT SPRINGS	NR	N/A	N/A	N/A	N/A	✓	X	✓	X	X	X	X	X	X	X	X	X	X	X	X	X	X	X	X	X	X	✓	✓	✓	✓	✓	X	X	X	X	X	X	Kununurra (45Km)	Kununurra	Contact CALM Office. Small Rainforest Patch.
	PRINCE REGENT	NR	N/A	N/A	N/A	N/A	X	X	X	X	X	✓	X	X	X	X	X	X	X	X	X	X	X	X	X	X	X	X	X	X	X	X	X	X	X	X	X	Derby	Kununurra	Entrance Permits Required from CALM. Scenic overflights.	
	WOLFE CREEK CRATER	RES	Free	Free	N/A	N/A	✓	X	✓	✓	✓	X	X	X	X	X	X	✓	X	X	X	X	X	X	X	X	X	✓	✓	✓	✓	✓	X	X	X	X	X	X	Halls Creek (145Km)	Kununurra	Meteorite Crater.
	GEIKIE GORGE Adult Child Pensioner	NP	Free	Free	N/A	\$17.5 \$2 \$17.5	✓	X	✓	✓	✓	X	X	✓	X	X	X	✓	X	✓	X	X	X	X	X	X	✓	✓	✓	✓	✓	✓	X	X	✓	X	X	Fitzroy Crossing (20Km)	Fitzroy Crossing	Day Use Only. Boat Tours Available.	
	TUNNEL CREEK	NP	Free	Free	N/A	N/A	✓	X	✓	✓	✓	X	X	X	X	X	X	✓	X	X	X	X	X	X	X	X	✓	✓	✓	✓	✓	X	X	X	X	X	X	Fitzroy Crossing (115Km)	Derby	Day Use Only. Torches needed In Tunnel.	
	WINDJANA GORGE Adult Child Pensioner	NP	Free	Free	\$7 \$1 \$7	N/A	✓	X	✓	✓	✓	X	✓	✓	✓	X	✓	✓	✓	✓	✓	✓	X	X	✓	✓	✓	✓	✓	✓	✓	X	X	X	X	X	X	Derby (145Km)	Derby		
Proposed King Leopold Range NP	SILENT GROVE/BELL CR	PL	Free	Free	\$7 \$1 \$7	N/A	✓	X	✓	✓	✓	X	✓	✓	✓	X	✓	✓	✓	✓	✓	✓	X	X	X	✓	✓	✓	✓	✓	X	X	X	X	X	X	X	Derby (250Km)	Derby		
	LENNARD GORGE	PL	Free	Free	N/A	N/A	✓	X	✓	X	X	X	X	X	X	X	X	X	X	X	X	X	X	X	X	X	X	✓	✓	✓	✓	✓	X	X	X	X	X	X	Derby (200km)	Derby	Day Use Only.
	MT HART HOMESTEAD	PL	Advance Bookings Obligatory (08) 91 914 645				✓	✓	✓	X	X	X	X	✓	✓	X	X	X	X	N/A	✓	✓	✓	X	✓	N/A	✓	✓	✓	✓	✓	X	X	X	X	✓	X	Derby (250Km)	Derby	Bookings Essential	
	COULOMB POINT	NR	N/A	N/A	N/A	N/A	✓	X	✓	X	X	X	X	X	X	X	X	X	X	X	X	X	X	X	X	X	X	X	✓	✓	✓	✓	✓	X	X	X	X	X	Broome (75Km)	Broome	
	ROWLEY SHOALS	MP	\$50 per person on charter tour				✓	✓	X	X	X	X	✓	X	X	X	X	X	X	X	X	X	X	X	X	X	X	X	X	✓	✓	✓	✓	✓	X	X	X	X	✓	Broome	Broome
	LACEPEDE ISLANDS	NR	N/A	N/A	N/A	N/A	✓	X	X	X	X	✓	X	X	X	X	X	X	X	X	X	X	X	X	X	X	X	X	✓	✓	✓	✓	X	X	X	X	X	X	Broome	Broome	Contact CALM Office.

Regional Office & East Kimberley District
Cnr Konkerberry & Messmate Way
PO Box 942
KUNUNURRA WA 6743
PH (08) 9168 0200 Fax (08) 9168 2179

West Kimberley District
Herbert St
PO Box 65
BROOME WA 6725
PH (08) 9192 1036 Fax (08) 9193 5027

Fitzroy Office
PO Box 37
FITZROY CROSSING WA 6765
PH (08) 9191 5121 Fax (08) 9191 5165

Mt Hart Homestead
PH (08) 9191 4645
Fax (08) 9191 4645

KEY
✓ Feature/service/facility available.
x Feature/service/facility not available.
N/A Not applicable.