

LIBRARY

Department of Biodiversity,
Conservation and Attractions

This PDF has been created for digital preservation. It may be used for research but is not suitable for other purposes. It may be superseded by a more current version or just be out-of-date and have no relevance to current situations.



Shannon Dam

The Great Forest Trees Drive is a 48km self-guided drive that winds its way through spectacular old-growth forest. There are several places along the way to pause and appreciate the scenery.

Great Forest Trees Drive

roads are now used for walk trails and scenic drives. were dismantled and removed. The old logging tramways and a nursing station. The mill was closed in 1968 and the buildings settlement had 90 houses, a hall, church, store, post office and the 1940s to cater for a timber shortage after World War II. The Manjimup and Walpole, it was once home to a mill town built in Shannon is a spectacular place to explore. Halfway between Home to some of the State's most magnificent karri forest, the



Boorara Tree

From the Boorara Tree, visitors can follow a 5km return walk to Lane Poole Falls. Granite outcrops along the trail support a rich diversity of fragile plants and the trail is decorated with wildflowers in season. Lane Poole Falls is at its best in winter when the Canterbury River cascades 12m over the polished granite rocks into the foaming pool below.

Lane Poole Falls



Boorara Tree was one of the last fire lookouts of its kind built in the southern forest in the 1950s. The tree is no longer used as a lookout and its cabin and lower climbing pegs have been removed for safety reasons. Visitors can explore a replica cabin located at ground level near the tree's base.

Boorara Tree



Carey Brook

There is much to do and see within the southern forests region and the surrounding area. Scale the giddy heights of a fire lookout tree for magnificent views across the landscape, take in the vast extent of the Southern Ocean from windswept limestone headlands, set off on foot or cycle through breathtaking forests, or simply stop and camp by a pristine river in one of the many camp sites. This is a region like no other and it is worth spending some time exploring and discovering its unforgettable treasures.

Take a journey to Western Australia's southern forests region and you'll discover some of the most enchanting forests and awe-inspiring coastline in the world. For thousands of years this land has been home to the Piblemen Noongar people who have been nourished by its abundant landscape and continue to have a profound physical and spiritual connection to the area.

Welcome

Exploring the Southern Forests and surrounding areas



Pemberton – Northcliffe – Quinninup – Manjimup visitor guide



Department of Parks and Wildlife



RECYCLE Please return unwanted brochures to distribution points



Lake Muir

King Jarrah

Perup Road Reserve



A popular picnic site on the doorstep of Manjimup, this site is home to one of the biggest jarrah trees in the south-west. A 650m sealed walk trail starts at the foot of this majestic tree, allowing visitors to enjoy the forest and abundant spring wildflowers.

One Tree Bridge – Glenoran Pool – Four Aces

One Tree Bridge Conservation Park



Located near each other on the Donnelly River, these sites provide a fantastic hub for bushwalking, birdwatching and photography. One Tree Bridge is linked to the Four Aces by a 2km return walk trail. The Bibbulmun Track and Munda Biddi trails can also be accessed from the One Tree Bridge car park. Camping is available nearby at the Greens Island camp site.

King Karri



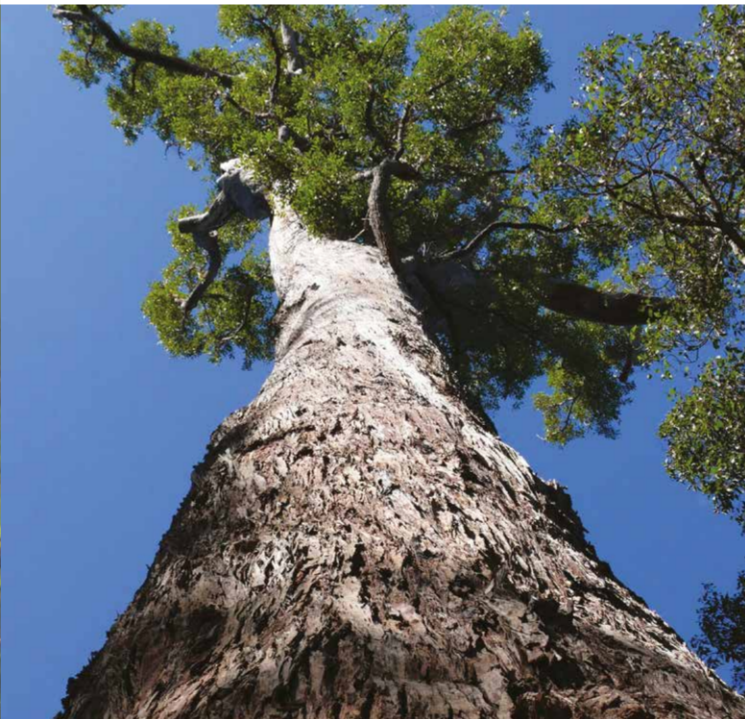
At 71m tall, this giant karri tree stands out amongst a sea of regrowth karri forest. Follow the walk trail from Donnelly River Village to marvel at this magnificent tree.

Lake Muir Lookout

Lake Muir Nature Reserve



A popular stop with travellers on the Muir Highway, visitors can follow a boardwalk through the internationally significant wetlands to an elevated bird hide with expansive views over Lake Muir.



King Jarrah

Camping

Shannon campground

Shannon National Park



Shannon Campground offers a convenient base for exploring the park and surrounding attractions. Single and group sites are available for tents and vehicle-based camping and many sites are suitable for caravans and trailers. Two camp huts are available on a first arrival basis.

Carey Brook – Snottygobble Loop – Grass Tree Hollow

Greater Hawke National Park



Snottygobble Loop and Grass Tree Hollow each provide secluded vehicle-based camping close to Carey Brook. Snottygobble Loop has 11 camp sites including a group camping area and a picnic shelter. Grass Tree Hollow has seven shady camp sites and basic facilities. A moderately easy 5km return walk trail runs from Grass Tree Hollow, through Snottygobble Loop to the mysterious Goblin Swamp. The Donnelly Boat Landing is also located nearby.



D'Entrecasteaux National Park

D'Entrecasteaux National Park stretches for more than 130km along the south coast between Augusta and Walpole. The park is an important place for Piblemen Noongar people and features a large number of culturally significant sites.

Please refer to the *D'Entrecasteaux National Park* brochure for further information.

D'Entrecasteaux Drive (Point D'Entrecasteaux)



This sealed 6km drive winds its way from Windy Harbour Road to Point D'Entrecasteaux where visitors are afforded spectacular views from a number of cliff-top lookouts before continuing to Salmon Beach. Walk trails allow visitors to explore the area on foot.

Mount Chudalup



Mount Chudalup rises to a height of 188m. A moderate 2.5km return walk trail guides visitors to the summit where they are rewarded with spectacular 360-degree views. Be aware that the granite can be slippery in wet weather and there are steep drop-offs on the summit.

Donnelly Boat Landing



Launch your boat or canoe at Donnelly Boat Landing for an 11km trip down the Donnelly River to the mouth.

Yeagarup Lake



Yeagarup Lake is the gateway to the coast and the Yeagarup Dunes. Take a stroll on the boardwalk or picnic under the shady trees. The nearby Leaning Marri campground offers a shady place to camp.



Lake Jasper

Draftys camp

Warren National Park



Draftys Camp has two camping loops with shady camp sites spread along the Warren River. The area allows for river access and provides decks with views overlooking the river.

Warren camp

Warren National Park



Warren Camp has six secluded camp sites tucked away in the forest. Shaded viewing platforms overlook the river next to the canoe launch site.

Black Point

D'Entrecasteaux National Park



Black Point has two camping loops with a total of 30 camp sites. Both loops allow easy access to surrounding attractions including Stepping Stones, Breakfast Holes and Surfers Cove.



Four-wheel driving to the coast:

Yeagarup Dunes

The Yeagarup Dunes are a vast mobile sand dune system moving into the forest at a rate of 1m per year. The journey across the dunes is challenging yet rewarding. The track passes through soft sand so you will need to reduce your tyre pressure. Follow the posts that mark the designated route. Camper trailers are not permitted on the dunes due to the steep ascent through soft sand.

Black Point



Black Point is named for its spectacular hexagonal-shaped black basalt columns formed by volcanic lava flow. They are best seen at Stepping Stones where the rocks fit together like a mosaic. Sheltered camp sites provide a base from which you can explore this interesting stretch of coastline.

Lake Jasper

Yoondaddup is the Aboriginal name for Lake Jasper and the area is a sacred area to the Piblemen people. Being the largest freshwater lake in the south-west of WA, the area is ideal for swimming, canoeing and birdwatching.

D'Entrecasteaux beaches

Jasper, Yeagarup, Warren, Malimup, Gardner, Coodamurup

Visitors to D'Entrecasteaux National Park are spoilt for choice of beaches to discover and explore. All are accessible by four-wheel drive only and you will need to reduce your tyre pressure and drive carefully. River crossings and tide conditions need to be considered as vehicles have been damaged in the past. Sheltered camping is available at Moores Hut located near Coodamurup Beach.

Lake Jasper (Yoondaddup)



D'Entrecasteaux National Park

There are three walk-in camp sites located at Lake Jasper. Visitors can leave their vehicle in the car park and carry their equipment to the sites provided. These sites are popular, particularly in warmer months. Black Point and the Carey Brook campgrounds offer nearby alternatives if Lake Jasper is full.

Leaning Marri campground (Yeagarup Lake)

D'Entrecasteaux National Park



Leaning Marri Campground offers six shady camp sites located close to Yeagarup Lake. A group camp site with a shared shelter is also available. Leaning Marri provides a good base for those who wish to venture across the Yeagarup Dunes and to the coast.

Moores Hut (Coodamurup Beach)

D'Entrecasteaux National Park



Moores Hut is a relic from the pastoral era and provides a rustic and basic shelter option close to Coodamurup Beach. Camping is provided for in a peppermint woodland setting close to the hut.

Big Brook Arboretum

Big Brook Forest



Located 3km from Big Brook Dam along the Karri Forest Explorer Drive, visitors can camp at the Big Brook Arboretum. The site is suitable for caravans, and pets are allowed on a leash.

Greens Island

One Tree Bridge Conservation Area



Set near the banks of the Donnelly River, Greens Island camping area provides an ideal setting for exploring surrounding attractions and access to the Bibbulmun Track and Munda Biddi Trail. Pets are allowed on a leash.



Playing it safe – Caring for yourself

- Branches can fall from trees at any time. Avoid camping and picnicking under tree canopies, especially on windy days.
- Take great care on rocks and cliffs on the coast, as there is a risk of slipping and falling. Large waves can suddenly appear without warning and wash over rocks.
- Don't fish if it is too rough; check the weather forecast and tides before fishing. Always fish with someone else.
- Keep clear of cliffs and drop-offs. Stay on paths and behind barriers and fences.
- Swimming at beaches and inland waterways can be dangerous. Be aware of strong rips, variable water depths, submerged obstacles and wet slippery surfaces. For your safety do not dive or jump into the water.
- Stay alert and supervise children at all times.
- Before consuming, all water should be treated by vigorous boiling for a least one minute, mechanical filtration or chemical treatment. Please use water sparingly.

Leave No Trace

When visiting this area, please consider the following:

- Take rubbish with you and dispose of it appropriately.
- Leave what you find to pass on the gift of discovery to those who follow.
- Fires are permitted only in the fire rings provided except during the bushfire season when no fires are allowed. Preferably use your portable stove. Wood from the forest is habitat for wildlife.
- Pets are not permitted within national parks as they threaten wildlife and can disturb other visitors. This is also to protect pets. Baits used to control feral animals will kill domestic animals if eaten.
- Stay on paths provided to protect plants and prevent erosion to the landscape.



Cathedral Rock



Department of Parks and Wildlife



Photos supplied by Wendy Elby and Parks and Wildlife

Information current as at June 2016. Publication available in alternative formats on request.

20160114-0816-20M



Karri Forest Explorer Drive

The Karri Forest Explorer is an 86km scenic drive that circumnavigates the historic timber town of Pemberton. The drive winds through Gloucester, Greater Beedelup and Warren national parks, and Big Brook Forest. It also passes many other local attractions including wineries, cafes, galleries and craft centres. You can enjoy the drive at your own pace and it can be done as one journey or several smaller ones.

Trail-side information is available and visitors can tune into the local tourist radio (88FM) to hear stories of the area.

See the *Karri Forest Explorer* brochure for more information.



Gloucester National Park

Gloucester Tree



Gloucester National Park is home to the 53m-tall Gloucester Tree that was once used as a fire lookout tree. Today, visitors can climb the 153 pegs to the top where they are rewarded with commanding views of the karri forest and surrounding farmland. Back on firm ground, visitors can enjoy one of the area's walk trails ranging from 400m to 10km long.

The Cascades



The Cascades are located at the southern end of the park. This waterfall is a great place to visit all year round, but is particularly impressive in winter when the Lefroy Brook transforms from a gentle flow to a raging torrent. Lookout platforms and a 1.2km loop walk trail provide vantage points to view the rapids and surrounding forest. The walk trail is steep in places.



Greater Beedelup National Park

Beedelup Falls



Beedelup Falls – the national park's main attraction – are pleasant all year round, but are in full flow in winter and early spring. Visitors can access the falls via a 600m walk that traverses a boardwalk and suspension bridge and offers passage across Beedelup Brook. There is also wheelchair access to a viewing platform with views of the falls, Lake Beedelup and the Karri Valley Resort.

A mildly challenging 4.5km walk also runs between the falls and Karri Valley Resort.



Warren National Park

Heartbreak Trail



The Heartbreak Trail is a 12km drive trail that follows the karri-clad slopes of the Warren River valley. The trail takes you past several places of interest including Heartbreak Crossing, the Warren River Lookout and Draftys and Warren camp sites. Please be aware that the Heartbreak Trail is a one-way, gravel road that is very steep in places and can become slippery when wet. It is not suitable for buses, caravans or trailers. Tune into 88FM at Warren Lookout for information about the area.

Warren River Loop Walk

This walk is a spectacular 10.5km moderately hard walk trail that passes through some of the region's most magnificent old-growth karri forest. The trail takes you deep into the moss-clad Warren River valley where it meanders alongside the river through groves of karri, sheoak and Warren River cedar.

Please refer to the *Warren National Park* brochure for further information.



Big Brook Forest

Big Brook Dam



Big Brook is a young forest, regenerated after harvesting in the 1920s. Visitors can swim in the dam, picnic by the water's edge or enjoy the sealed 4km Big Brook Dam Walk that circumnavigates the dam. Fishing for trout or using a snare to catch marron in season are also popular activities (see Fisheries website for details, fish.wa.gov.au).

Dogs may be taken on a leash to the Big Brook Dam, but are not allowed in the water or on the beach.

Big Brook Arboretum

The arboretum is 3km from Big Brook Dam by vehicle, or 1km on foot via a walk trail that leads off from the upper reaches of the dam. You can wander among the many plots of exotic trees that were planted here and see how they grow and respond to the local soil and climate.



Dave Evans Bicentennial Tree

Perup – Nature's Guest House



Perup – Nature's Guest House offers dormitory and cottage-style accommodation. Organised groups and private visitors are welcome. Walk trails allow visitors to explore the surrounding bushland and a walk at night with a torch will give you the best chance of seeing the native animals. Access to Perup – Nature's Guest House is by arrangement only. For more information contact the Parks and Wildlife Pemberton office on (08) 9776 1207.

The Bibbulmun Track

This world-class long-distance walk trail winds its way through the spectacular landscapes of the south-west for 1000km from Kalamunda near Perth to Albany on the south coast. It takes in the picturesque settlements and towns of Donnelly River Village, Pemberton and Northcliffe. Camp sites are strategically placed in sensational locations between the towns providing walkers with simple timber sleeping shelters and other facilities including bush toilets, picnic tables and tent sites.

Many day walk options are available from towns along the track. For more information visit www.bibbulmuntrack.org.au.

Munda Biddi Trail

The Munda Biddi Trail (which gets its name from the Noongar words for 'path through the forest') is a world-class nature-based cycling experience. Whether you camp in the shelters provided or stay in quaint country towns, including Manjimup, Pemberton, Quinninup and Northcliffe, the Munda Biddi has something for everyone. There are sections of trail to suit anyone's cycling ability and pace. The trail is easily accessible by car, so you can begin your journey wherever it is convenient. The trail is predominantly off main roads, so you can enjoy the scenery while you safely cycle through the forest on a dirt track.

For suggested trips matching your experience and fitness level, see www.mundabiddi.org.au.

