

# LIBRARY

Department of Biodiversity,  
Conservation and Attractions

This PDF has been created for digital preservation. It may be used for research but is not suitable for other purposes. It may be superseded by a more current version or just be out-of-date and have no relevance to current situations.

## 47 Henry Street

WA Naturally is housed within a building so rich in local history that some people visit for that reason alone.

Purpose built in 1886 for WA's second oldest trading company, J&W Bateman's, 47 Henry Street was a community gathering place for more than 100 years.

The people of Fremantle, Perth and country settlements would meet at Bateman's to stock up on a large range of goods shipped in for the fast-growing local population—and to catch up on the latest news.

When new shipments arrived at Bateman's, elegant Perth ladies would be seen purchasing yards of silks under the same roof as fortune-seeking men from near and far who came in to stock up before heading off to Kalgoorlie during the gold rush.

Today, the building's design incorporates a life-size boab tree, which appears to grow, through walls and barriers, into the foyer of the building.

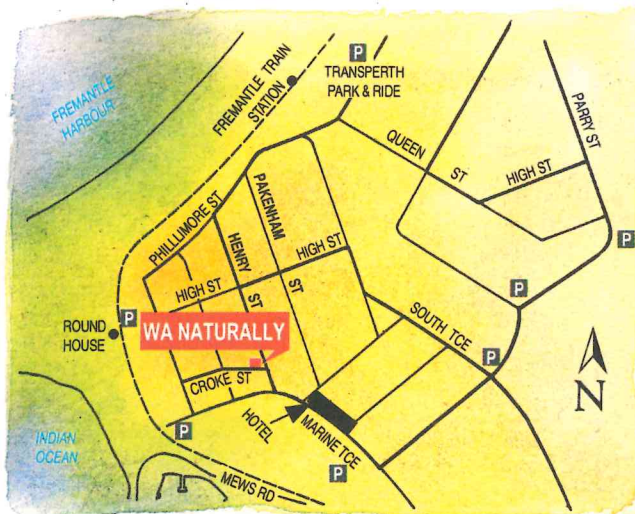
Outside, just look for the series of colourful banners, which display native WA scenery, flapping in the 'Freo Doctor'—the local name for the afternoon sea breeze.



"Excellent presentation! Keep up the good work." JB—Fremantle  
"We'll be back." JM&PB—England"



## Come and explore for yourself...



## WA Naturally

CALM's Outdoor and Nature Information Centre

10 am to 5.30 pm every day (except Tuesday) and most public holidays  
47 Henry Street, Fremantle.

(Marine Terrace/Esplanade Park end. Just look for the banners.)

Phone (08) 9430 8600 Fax (08) 9430 8699

**Train:** 20 min from Perth Station, 5 min walk from grand old Fremantle Station.

**Bus:** 30 min from Perth Bus Port to Queen Street (Bus 151, 105, 158 or 106).

**Car:** 25 min from Perth via Stirling Highway or Kwinana Freeway.

**Swim:** Avoid all dangerous sea creatures. Swim to shore at Bathers Beach.

Or call Transperth on 13 62 13.

Browse our *NatureBase* internet site at <http://www.calm.wa.gov.au/>

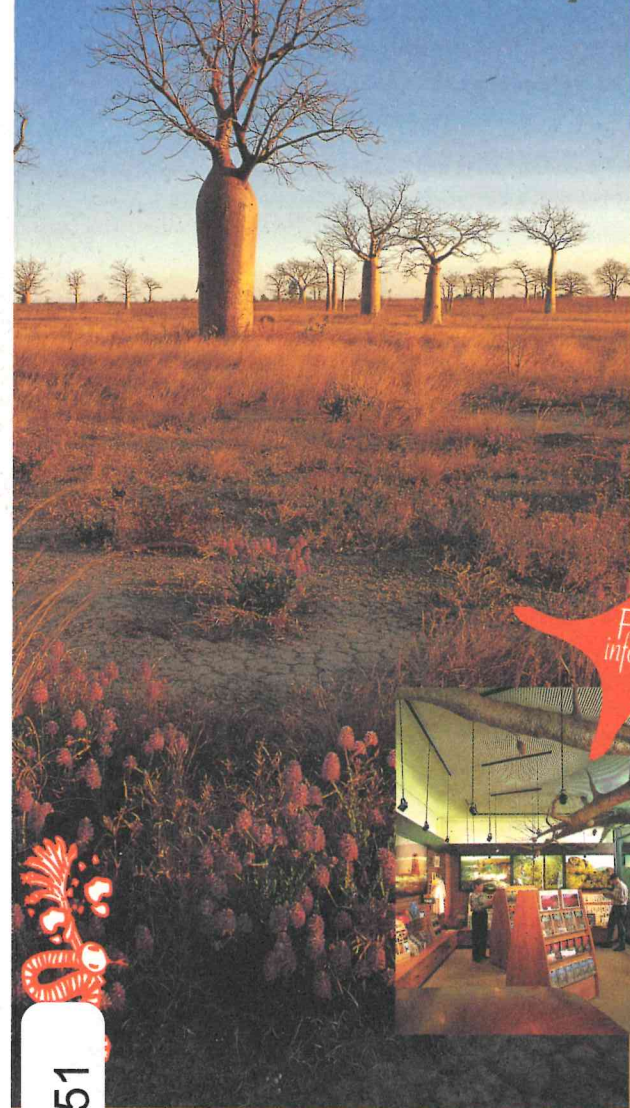
Thank you to the many people who write in our Visitor Book.

"Palya.\*" RN, AL & BL—Balgo Hills Community, Kimberley  
(\*Western desert Aboriginal word for 'satisfied, good.')



DEPARTMENT OF CONSERVATION AND LAND MANAGEMENT

## WA's Great Outdoors is Only Moments Away



FREE  
information

PAM04951

4263 1198 20M

WA Naturally  
CALM's outdoors and nature information centre

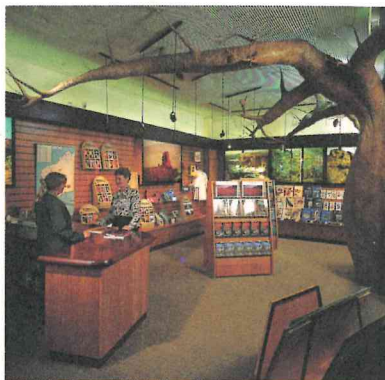


## Explore!

Where are the best nature-based recreation spots around Perth?  
I need a good guidebook for the Bibbulmun Track. Where can I find one?  
Where do woylies and numbats live?  
What are we going to do with the kids next school holidays?  
Which national parks can we go camping in and what facilities are available?  
Where can I find a good book on wildflowers?  
What can I get my nature-loving Aunt Poppy as a gift?

If you're curious about any aspect of this wonderful State's natural attractions, drop in to *WA Naturally*, the Department of Conservation and Land Management's (CALM) outdoor and nature information centre.

Located right in the heart of Fremantle's historic West End—close to cafes, shops and local attractions—*WA Naturally* is an essential point of contact for holiday-makers, students, locals, teachers, families, tour operators—just about anyone who's interested in anything to do with nature in WA.



## Free information

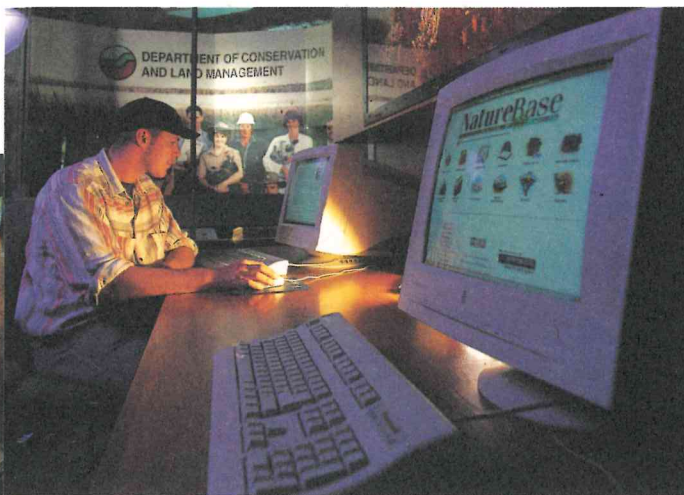
*WA Naturally* is staffed from 10 am to 5.30 pm every day except Tuesday, including weekends and most public holidays.

We offer a centralised source of nature-based information and a broad range of brochures, books, magazines and gifts, as well as computer access to on-line resources.

Our advice, a highly informative brochure series and several other items are provided free of charge as part of CALM's role to encourage respect, enjoyment and appreciation of WA's unique flora and fauna. Computer access is also complimentary.

## Use us as a starting point

If we can't help you, we'll probably know someone who can. *WA Naturally* is designed to be a relaxed, friendly and fascinating place to visit that opens your mind to many, many more interesting places to go.



## Free on-line services

Follow step-by-step instructions to gain computer access to *NatureBase*, CALM's award-winning internet site, and *Wild About Western Australia*, an interactive, multimedia CD-ROM offering you a spectacular taste of regional WA and the city of Perth.

*NatureBase* gives you up-to-the-minute access to a wide range of conservation and land management topics. It is the leading internet site for information on WA's parks, forests, conservation, wildlife nature-based tourism, and nature-based tourism operators. *NatureBase* contains educational resources and programs, facts about our forests, latest news and media releases, and more.

*Wild About Western Australia* takes you on a guided tour of WA, stretching from the ancient rock formations of the north to the giant karri forests of the south.

Both these exciting sites contain virtual reality movies, sounds and other interactive components all designed to make your visit even more enjoyable. Take a 360° look at Monkey Mia, almost as if you were with the dolphins... but not quite. There's nothing like really being out there.

## The best in nature publications

A complete selection of CALM's award-winning and popular nature publications are available. High quality photography and scientifically accurate information are features of CALM publications, and the range is designed to fit all budgets. Some best sellers include:

○ The *Perth Outdoors* recreation guide series—with hundreds of colour photos, ideas for outings, maps and information on plants and animals you can find along the way.

○ *LANDSCOPE* magazine & calendar—two ever-popular items.

○ Nature-based regional guides—*North-West Bound*, *Wildflower Country* and *Wild Places, Quiet Places*.

○ Bush Books—pocket-sized field guides to WA's unique plants, animals and special features.

○ *Great Forest Trees Drive*—map and drive guide to the Shannon National Park.

○ *Dive & Snorkel Sites*—an excellent guide to 43 dive sites from Augusta to Exmouth.

○ *Broome and Beyond*—a big beautiful volume all about Broome and the Dampier Peninsula.

## And more...

Other items and information includes:

○ Cards, prints & stationery featuring WA flora & fauna.

○ Current scientific research reports on key conservation and land management issues.

○ Guided tour and expedition information.

○ CALM bush activities information for students and others.



"Thoroughly enjoyed our browse." S&R Mc—Scotland "Excellent." JF—Mosman Park "A great place to visit." JK—Singapore "Excellent." The Moss Family—Maningrida, Arnhem Land  
"An enjoyable visit. Friendly and helpful." E&BH—Wales "Thank you for your kind help." VL—Brunei "Fantastic incentive to look after our world." MS—East Vic. Park "An excellent exhibition." BP—Belfast/London/Sydney/Perth!!