

LIBRARY

Department of Biodiversity,
Conservation and Attractions

This PDF has been created for digital preservation. It may be used for research but is not suitable for other purposes. It may be superseded by a more current version or just be out-of-date and have no relevance to current situations.

The Jarrah Inventory Project

N E W S B R I E F

ON TARGET TO MEET TIMBER STRATEGY DEADLINE

The new inventory of the jarrah forest is on target to meet the 1990 deadline specified in the Timber Strategy.

Photo samples of about 400,000ha of the 'production priority' forest were taken during the first stage of the project.

Project coordinator Greg Strelein said that nearly all ground plots for the first year have been measured.

However, aerial photos, taken with the Department's Vinten cameras, could not be measured satisfactorily on computerised equipment intended for that purpose.

As a result, the photo measurement is behind schedule and other manual instruments are being set up to do the job.

These instruments need maintenance and some modification to be able to measure tree heights on about 7000 photo plots. Steve Quain and other photo interpreters will be kept

busy trying to finish the job by January when next season's photos arrive.

Paul Biggs, now working on new developments and refinements of the project, is investigating a new camera system which will be more compatible with the computer-driven measuring equipment.

Inventory Branch manager Hugh Campbell said other phases of the project went well.

'The many Inventory staff involved in the project are to be congratulated for their commitment to get the work completed in time for presentation of the Central Forest Region's marri chipwood resource statement,' he said.

Don Keene, manager of Forest Resources Division, said he was very pleased with the progress to date and with the standard of the data becoming available.

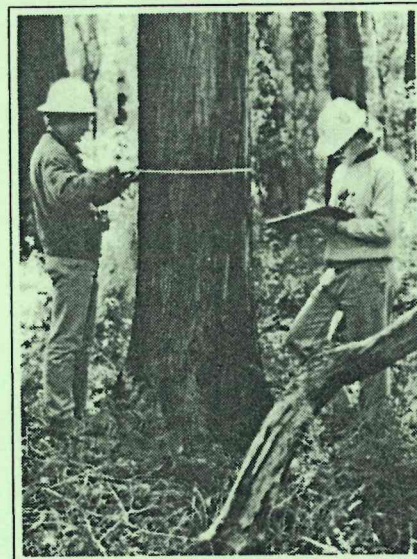
He emphasised the importance of the Jarrah Inventory Project in enabling sound decisions to be made regarding future forest management, particularly in multiple use areas.

Information for the resource statement came from ground measurements of a subsample of more than 500 photoplots. These are the second stage samples used to fine-tune the estimates of the larger sample of photoplots.

Dieback interpretation staff, skilled in 70mm film use, located the sample points with help from satellite navigation data.

As many as 10 assessment crews then followed up to measure and assess the plots in a program of field work organised and prepared by other Inventory staff in each region.

Peter Bowen and John Dunn prepared Intergraph



Lance Atthowe and John McKenzie measure trees.

maps for plot navigation and presentation of results. Programs developed by Warwick Boardman were used to calculate timber volumes. Carol Bell prepared a program on the Husky portable computer to record data in the field. Mike Green and Colin Pearce will incorporate the resource data into a Geographic Information system.

The ground-based assessment system describes defects rather than products. Cecil Scott is conducting sawing trials at Harvey to give assessors some feedback on defect development inside the log.

Integrated logging trials at Collie are being used to check the inventory techniques and compare the volume estimates.

Preparations are also underway for next year. After meeting with the helicopter contractor regarding logistics, Inventory Branch will ask the districts to help arrange fuel dumps, deliveries and security and to provide details of local flying problems.

The next photography session is due to take place in December and January.

