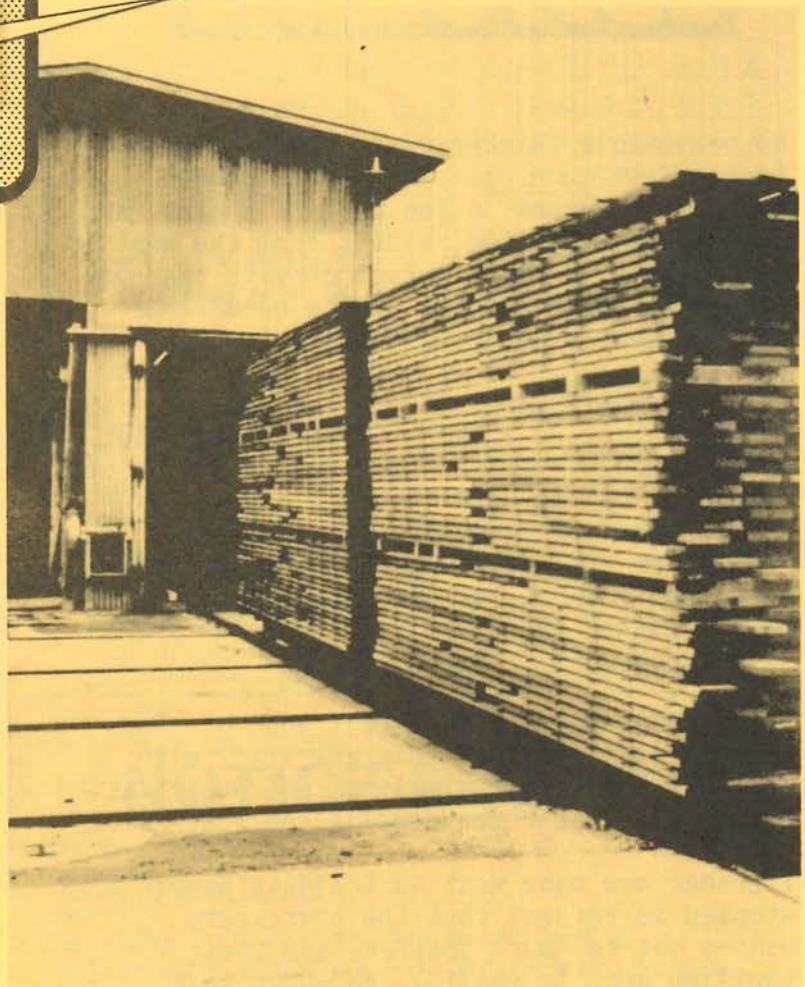


# HARVEY ALL FIRED UP

A co-operative venture between Bunning Bros. Pty. Ltd. and the Forests Department is already researching methods to improve the efficiency of seasoning top quality jarrah timber. Begun in late 1982, in direct response to the growing world need to better utilize forest resources, the research programme shares facilities at Yarloop and Harvey.

So far, the results have been very encouraging, according to Phil Shedley, Forests Department's spokesman for the joint working group. "The demand for jarrah furniture wood is increasing steadily in Australia and overseas markets," said Phil. "Like other eucalypts, jarrah is difficult to season without splitting," he said, "and this programme is aimed at increasing the supply of quality jarrah by adopting improved techniques and modern seasoning equipment."

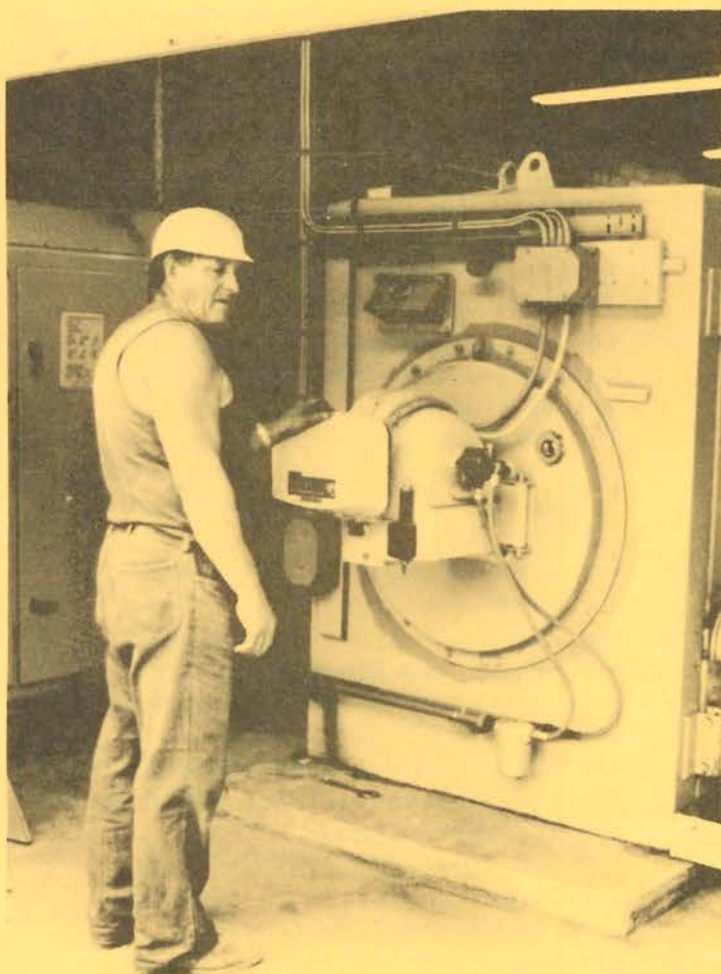


• Jarrah just removed from the Kiln.

Tests indicate that present drying from green must be slow, to avoid surface checking. However, once the wood has reached fibre saturation point drying to a stable moisture content can be achieved within one day, without detrimental effects, using the oil fired kiln (120°C).

As well as improving the kiln's operating schedules, an ongoing programme is testing a variety of methods to control the initial drying down to fibre saturation point. Milling practice has been to confine the sawing of finishing quality timber to the cooler months of the year to avoid splitting in the hotter months. Efficient seasoning throughout the year would greatly increase the availability of high grade timber.

One of the new methods used to control the initial drying of jarrah will be a modified version of the progressive tunnel kiln, developed by the CSIRO in Melbourne. This system provides high humidity, low temperature conditions in the early stages of drying, followed by a gradual reduction in humidity and increase in temperature as the timber dries. A small experimental kiln of this type has been constructed at Harvey and testing will begin this month.



• Des Robinson fires up the oil burner on the Harvey Kiln.

"Bush Telegraph" is the staff journal of the Forests Department in Western Australia. Any views or opinions expressed do not necessarily reflect those of the Department and articles published should not be taken as statements by the Department or the West Australian Government.

All enquiries and comments should be directed to Ian Kay, the editor, phone Como HQ ext. 327.

# EDITORIAL

No reasonable thinker could condone the brutish attitude of a few narrow combed (minded) shearers in the Eastern States, and their attacks on the 'Widees from the West.' Unfortunately, it is a fact of life that for every 'character' built during hard times and changes, others are destroyed.

"We are only human ..." was part of the excuse raised on a recent T.V. review - but what, I would like to know, has this type of behaviour got to do with being a human? Or is the power of thought just a fallacy? Perhaps we are all destined to become no more than compost for pine trees. Would you really rather be something other than a free thinking human?

Having then decided to accept your glorious role in life (I trust some are still with me), why can we not simply accept others as humans with their own equally glorious role?

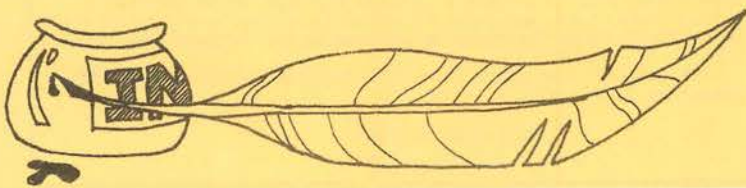
I wonder how many West Australians have stopped to reflect that the brick-bats handed out to 'our' shearers and their families are, in reality, no worse than those received by many new Australians bringing bags of enthusiasm and new ideas to the 'West'. Why, in an under populated state three and a half times the size of Texas, do we have to be so negative about other people. Surely, after 200 years, we are old enough to know ourselves and where we stand. Surely now, we can come to terms with new arrivals without putting them in gettos and covering them with labels.

West Australia has barely scratched the surface of its potential. We need people and we need to be able to work together if this State is to become anything more than "the back door of Aussie".

By the same token, the combination of the three land resource departments and the redefined management goals will also need our acceptance of 'new' people and their potential. When you consider the size of the new task - Western Australia's land resource management - the combined group of 1600 people is not large. But it can be efficient, and our combined contributions will do a lot for the State and those who have chosen to make it home.

All we need is faith in ourselves and the ability to see potential in others. The rest will come naturally ..... working together.

I. K.



## Celebration

With the exception of a twisted ankle, Kirup Division has now worked four years without a lost time accident.

"This is a feat well worth celebrating" said Dave Evans, making his third annual safety presentation to the Division since his appointment as Minister of the Crown (January 1982).

And celebrate they all did, at the Kirup Community Hall on Friday, 23 March. Spit-roasted sheep and buckets of fresh crabs were served after the official announcements.

Dave was assisted in the presentation proceedings by Dennis Glennon, the Director of the Industrial Foundation for Accident Prevention.

## OH! THAT TASK FORCE.

Last year, the Government instigated the formation of the Timber Utilization and Marketing Task Force for an immediate investigation of possible improvements in Western Australia's timber resource, its utilization and marketing.

The Task Force identified seven major areas of concern in its first report, released in December. They were:

- \* the need for a comprehensive forest resource inventory to provide the basis of future planning;
- \* the need to promote growth on potential sawlogs by thinning regrowth jarrah forest;
- \* the need to develop markets for the commercial sale of products of this jarrah thinning;
- \* The need to develop improved processing techniques, particularly seasoning, for both hardwoods and softwoods;
- \* the need to improve and expand markets;
- \* the need to improve and expand timber processing and manufacturing industries within Western Australia; and
- \* the need for continued research into the timber resource, its utilization and its marketing.

The Task Force comprises ten private industry representatives from West Australian companies and seven Forests Department executives, under the Chairmanship of Frank Campbell, the Acting Deputy Conservator.

## WORD SLEUTH

Stella Bickmore (Mapping - Como) prepared this Forestry Word Sleuth for your enjoyment.

Try and unjumble the words - some are written back to front and/or diagonally.

If you can count 37 "forestry" words you are doing better than Stella. We will publish her clues in the next issue.

## FAMOUS FIVE

If you haven't read "Yes Minister", by Antony Jay and Jonathan Lynn you are in for a few laughs. If you have, you will probably recognize these five standard P/S excuses when they crop up at work.

According to Sir Humphrey (in the book), these excuses have covered every eventuality - even wars (small ones anyway).

They are named after famous examples of their use.

- 1 The Anthony Blunt excuse  
There is a perfectly satisfactory explanation for everything, but security prevents its disclosure.
- 2 The Comprehensive Schools excuse  
It's only gone wrong because of heavy cuts in staff and budget, which have stretched supervisory resources beyond the limit.
- 3 The Concorde excuse  
It was a worthwhile experiment now abandoned, but not before it provided much valuable data and considerable employment.
- 4 The Munich Agreement excuse  
It occurred before important facts were known, and cannot happen again.  
(The important facts in question were that Hitler wanted to conquer Europe. This was actually known: but not to the Foreign Office, of course).
- 5 The Charge of the Light Brigade excuse  
It was an unfortunate lapse by an individual which has now been dealt with under internal disciplinary procedures.

## It's a Foresters World!

D	A	M	E	G	O	L	W	A	S	F	O	F	I	R	E	L	K
G	A	M	E	A	N	O	R	R	O	M	C	T	N	T	U	O	E
A	N	S	A	W	M	I	L	L	E	L	O	S	A	S	C	G	E
D	O	O	W	K	C	A	L	B	V	S	L	E	P	E	A	G	R
O	I	P	M	U	S	S	O	P	R	E	L	R	G	V	L	I	C
D	T	R	E	G	E	N	E	R	A	T	I	O	N	R	Y	N	O
O	A	W	A	N	D	O	O	T	H	S	E	F	P	A	P	G	A
O	V	D	E	N	I	P	A	R	H	I	S	R	I	H	T	F	R
W	R	Y	A	F	A	N	U	A	F	S	H	E	N	P	U	I	O
L	E	L	K	F	L	O	R	A	N	I	T	B	A	O	S	S	H
A	S	I	R	C	E	R	G	G	S	L	U	M	S	O	U	D	T
O	N	E	M	S	A	T	A	B	M	U	N	I	T	H	N	N	H
N	O	F	O	J	G	B	N	E	U	Y	N	T	E	E	K	A	P
A	C	A	T	C	H	M	E	N	T	S	L	K	R	A	L	L	O
S	A	L	W	K	A	R	R	I	G	O	H	J	L	B	A	K	T
G	J	R	A	D	I	A	T	A	D	I	J	W	I	A	S	N	Y
V	T	I	L	I	Z	A	T	I	O	N	P	O	Y	E	N	U	H
P	R	U	N	I	N	G	H	T	W	O	R	G	E	R	D	S	P

## NOTICE BOARD

### SOCIAL CLUB

The Como Social Club has organized a SUNDOWNER for FRIDAY 6 APRIL in the canteen at State Headquarters (4.30 - 7.30).

There won't be a Bar B Que - but they do promise lots of great food, refreshments and a good time for all.

Money (\$3.00 members, \$5.00 non members) and numbers need to be in by Thursday, 5 April. If you are coming in from the country, phone Deborah Greaves (Como extension 263) and book your seat, sausage and softdrink (or whatever).

### ARBOR DAY

A magnificent photograph which captures the peace and tranquility of a River Gum bush scene is the theme of this year's ARBOR DAY poster.

The poster is being distributed by the Department to publicize Arbor Day, 8 June.

The photograph was taken by Cliff Winfield on the Banks of the Fitzroy River, Kimberley.

### GARDEN WEEK

Perth's Garden Week coincided with the launching of the World Wildlife Fund's International Plant Campaign. (see story p.4).

Information officers from the Department used city displays and exhibitions to give advice on "urban forestry" - that is planting trees which suit the garden location and don't out grow their owner's enthusiasm.

A free introductory brochure is now available.

# LANE POOLE AWARDS

The inaugural presentation of the Lane-Poole Awards took place at Como on Thursday, 29 March.

Ray Fremlin (Busselton) and Paul Marsh (Yanchep) gained the travel and study grants last year, and the presentation by Denis Cullity (Chairman of Directors, Westralian Forest Industries) and Dave Evans (Asst. Minister for Forests) was official recognition of their achievements.

During the ceremony, Pat McNamara sketched in the background to the awards -

"At the opening of this State Forest Headquarters, two and half years ago, Denis Cullity made a very generous commitment on behalf of his company - in remembrance of his father, the late Thomas Cullity.

## LETTERS TO THE EDITOR

Dear Editor

It is not the belief of all Foresters that the Bitumen Bushmen at Como don't know anything about the forest, but Sid Sirex has certainly put the doubt in their minds with his letter to the editor about the value of a Karri tree in 1896.

(e.g.) The value per load of exporting Karri was approximately £4.10 - this being the value for a sawn product, the per load in this case is a round volume.

Whilst it's a dream of every sawmiller, Karri trees don't grow square in shape and the volume of 120 loads for the big karri in Boranup is a round volume.

In producing a square volume suitable for sale from this 120 load Karri, an average 66% of the volume is lost because of faulty timber, insect attack, sawdust etc.

Therefore the amount of round volume required to produce 16 347 loads square volume of exported Karri is 54 490 loads (round). Even allowing for each Karri to be 120 loads (which is grossly over estimated) 4 538 trees are required to produce the required volume. Therefore each tree is valued at £16.13.6 and it would take 135 trees to supply the Woods and Forests Department's Annual Budget.

In view of the year (1896), population, falling and sawmilling techniques, 260 trees may be a more of a realistic figure than 4 (claimed) for the value of the Forests Department.

Like all good Sirexs, Sid should stick to Pine and leave the Karri alone.

Bush Ranger  
Busselton.

"As our first Forest Conservator, Charles Lane-Poole has become known to many as the founder of modern forestry practice in Western Australia. He was the inspiration behind the Forests Act of 1918 and was responsible for the establishment of the Forests Department as an independent organization.

"What is probably less well known, is that, in 1918, Lane-Poole's departmental organization required a utilization officer - Thomas Cullity, a very new graduate from the University of Western Australia was appointed.

"Thomas Cullity was particularly interested in kiln drying of native timbers, and he established facilities at Yarloop. Later in South Australia, he was responsible for the purchase and utilization of native timbers used by General Motors for coach building.

"In 1928, Thomas Cullity established Cullity Timbers in Western Australia - the forerunner to Westralian Forest Industries. The Westralian annual grant of \$4000 to the Lane-Poole Memorial Trust is a tribute to that early forestry relationship."

Last year, Paul used his grant to attend a three week chainsaw school at Mt Gambier in South Australia. Ray also spent time near Mt Gambier, studying site preparation and scrub control for the establishment of Radiata Pine. Ray later visited Gympie on Coastal Queensland, to study the preparation of wet sites.

The Lane-Poole Awards will continue within the structure of the newly forming Department.

## FOREVER GREEN OR GRIEVE

On March 22, 1984 World Wildlife Fund Australia joined with other national organizations of World Wildlife Fund, in the launch of the 1984 International Plants Campaign.

The Plants Campaign aims to increase community awareness of the need for conservation of our plant resources, in particular endangered species of native plants, and to raise funds for conservation projects directed to the survival of endangered plant species.

Plants are the earth's soft green mantle - protecting fragile soils from erosion, regulating the atmosphere, assisting in the production of the air we breathe, food, clothing, building materials and medicine. Without plants humanity could not survive.

Plants earn Australia more than \$7 500 million per year.

Donations and enquiries to:-

World Wildlife Fund Australia  
GPO Box 528 Sydney  
NSW 2001 Australia.