

# BUSH TELEGRAPH



## WALPOLE HAS THE EDGE



The main ingredients of a successful prescribed burn are the planning and the preparation put in before the operation.

In Walpole recently, the ground crews were busy with 'edging' and road maintenance in the Frankland Block.

Robin Burnside and John Hart used the D6 and 'A' frame (pictured) to crush scrub, push over stags and roll bigger logs away from the block's boundary roads.

This operation reduces the risk of tops fires and prolonged hot spots, and leaves only light fuel adjacent to the road.

Behind the D6 operation Dave Goodal and John Pearce followed with the grader and shovel (below) to tidy up the road and culverts - ensuring good access for the Heavy Duties and fire crews.

The lighter, flattened vegetation is left to dry out before being burnt to make a 'safe' edge for the aerial burn later in the season.

# EDITORIAL

Christmas is traditionally a time of families, nostalgia and thanksgiving, and in these times of change and challenge it is one of the few traditions that persist.

The cheerful excesses of the long summer holiday are for many a time of family reunion - a chance to get to know kids and partners again and to discover that they have grown another year older. Where did the time go?

For others it is a time of quiet thought - of families grown and gone - or of families, perhaps, yet to come.

For all of us it should be a time of thanksgiving; after all we have made it through another year and the next one doesn't start for at least two weeks.

This time last year, Publications Branch launched Bush Telegraph specifically to help keep everybody informed about what goes on in the Department.

It was a fairly 'lightweight' start but over the year the publication has matured - most definitely because many of you already know the value of communication and have made the most of Bush Telegraph's regular contact.

There have been stories from Walpole and Kimberley - and most places in between - and almost every branch has made a contribution.

In between times I've met a lot of new people and learned a lot about forestry in Western Australia.

Bush Telegraph was never designed to keep, but I can look back over the first year's work with thanks -

- \* thanks for the new challenges;
- \* thanks for the support of the publications team; and
- \* thanks for the friendship of my new forest family.

Cheers!

Ian Kay.



# FAMOUS TREES

The W.A. Division of the Institute of Foresters of Australia plans to establish a wood dedicated to the Famous Trees of Commerce, Culture, Legend and Literature. It will be different to the usual park of specimen trees and the trees will be grown as closely as possible in their natural formation and mixtures. For example forest trees will be grown as a forest, woodland trees in open formation. The Foresters hope to create not just an attractive grove of trees but the atmosphere of the forest as well.

The new wood will be located in Manjimup on land recently made available by the Government.

In years to come the wood will become an attraction of world standing - a constant reminder of the importance of trees to the well being of man in the past and in the future.

Species which have been suggested include:

**Western Red Cedar** - A magnificent tree used by the Indians of the West Coast of America for their lodges and totem poles.

**Coolibah** - The tree of Waltzing Matilda

**Salmon Gum** - Without the Salmon gum to drive the steam engines and distill the water, the gold which established Western Australia at the turn of the century would not have been won.

**Kauri** - The basis of the Yallourn Coal Fields.

**Sequoia** - The largest living organism in the world.

**Lodge Pole Pine** - Derives its name from its use in building Indian Tepees.

**Willow** - Where would the empire be without cricket bats.

**River Red Gum** - Most people's image of the Australian Gum tree, made

Continued on Page 7 .

---

# Steam Train Hot Favourite

The Hotham Valley Tourist Railway Inc. ran 16 tours from Perth to Dwellingup between 1 May and 31 October. Two steam locos provide the hauling power between Pinjarra and Dwellingup.

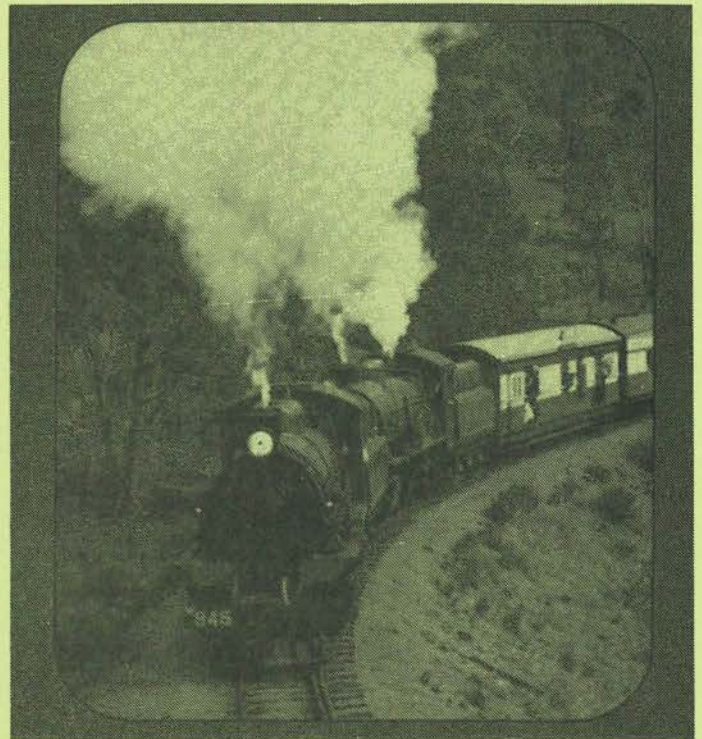
The 1984 season was a total sell out and the HVR estimate that between 3,000 and 5,000 people were turned away from the Dwellingup train journeys.

To cater for the increasing demand, carrying capacity will be increased in 1985 with the provision of two train journeys on each Sunday. HVR also plan to operate the Pinjarra to Dwellingup line on weekdays in co-ordination with Westrail's existing Australind service.

The Vintage rail service expects to carry some 14,000 passengers in 1985 compared to 9,000 in 1984.

On arrival at Dwellingup, passengers disembark at the Westrail station and have the opportunity to enjoy a barbecue at an adjacent picnic area. This picnic area is under lease to the Forests Department from Westrail.

As with the rail schedule, the current site development and facilities are inadequate and must be upgraded if the high quality and image of the tours are to be maintained. Although infrequently used by other forest visitors, the site does present an image of the jarrah forest and of the Forests Department to the HVR tourists. In January 1984, the Department commissioned its landscape architects to prepare a development plan for the area. The plan incorporates 17 hexagonal modules with railway sleeper seating, walls and the use of shared barbecue facilities. Intensive planting will soften the



gravelled pedestrian walking areas and the site will be linked to the Dwellingup Hotel and existing toilet facilities.

Future development will include a large gazebo with food storage and distribution facilities, renovation of the railway station and extension of the tourist railway some 8km east into the jarrah forest, along the old Boddington line.

The Forests Department's input has been confined to the preparation of detailed design and construction plans. Construction is due to begin this summer and the Department will be supervising all future use and development in the area, according to the conditions set out in the Westrail lease.

Finance for the project and its subsequent construction will be the responsibility of the Hotham Valley Tourist Railway Inc.

EUGENE HERBERT

"Bush Telegraph" is the staff journal of the Forests Department in Western Australia. Any views or opinions expressed do not necessarily reflect those of the Department and articles published should not be taken as statements by the Department or the West Australian Government.

All enquiries and comments should be directed to Ian Kay, the editor, phone Como HQ ext. 327.

---

## ON THE SHELF

At last Forest Focus No. 31 has arrived from the printer. Likely to be the last issue, the magazine features Jarrah; "A new perspective on Jarrah Dieback" by S.R. Shea, B.L. Shearer, J. Tippett and P.M. Deegan; "King Jarrah" by Ian Abbott and Owen Loneragan; "Beauty and Versatility" by Ian Kay and "Original Names" by Ian Abbott.

Distribution should proceed in time for Christmas.



Neil Burrows' paper "Describing Forest Fires in Western Australia" (TECHNICAL PAPER No.9) was released last month.

Written as a guide for fire managers Neil's work will help describe and evaluate the role of fire and fire regimes in relation to land management objectives. An important part of this work involves communicating with other fire organizations, and land managers who may not be familiar with fire. The paper presents common definitions of the many aspects of fire behaviour, and outlines techniques for quantifying fire behaviour.



On the subject of fire and its management, the Publications Branch would like to remind you that SPECIAL FOCUS No.1 - "Forest Fire Management in Western Australia" (1981) is still readily available.

Written by Roger Underwood and Per Christensen, with full colour production, copies are available for Departmental information and as give aways to special interest groups such as school parties and visiting fire managers.

Contact Robyn Weir - HQ ext. 329.

Limited numbers of the Shannon Forest/D'Entrecasteaux National Park strategy for Management Planning are again available at Head Office.

## FAREWELL VISIT

FRED JACOBY PARK - MUNDARING

A spring time drive to Mundaring and the Fred Jacoby Park has proved to be a fond farewell for Mrs. Elfrida Devenish. The daughter of Fred Jacoby, Mrs. Devenish died quietly at Sir Charles Gairdner Hospital on 20 November.

The visit to 'her' park had been arranged by the Department so that Mrs. Devenish and her husband Dick could meet the staff who have been responsible for the park's upkeep.

It was the first time that Mr. Devenish had been driven to the park, and both he and Mrs. Devenish expressed wonder at the changes which have taken place along the way. "When you are driving in today's traffic you don't get a chance to see what's going on along the way," he said. (Mr. Devenish took 4 1/2 hours and numerous punctures to make his first trip by car.).

At the park the couple met Gordan Hample, the man who carried out much of the early tree planting and the maintenance of the park (retired 1979) and Max Bending, the present caretaker of all the forest recreation sites around Mundaring.

A frequent visitor to the park with her family, Mrs. Devenish declared continued satisfaction with the landscaping and the growing number of people who use the facilities.

The Fred Jacoby Park at Mundaring is one of the most popular family picnic areas in Perth, probably because it is one of the more picturesque and yet is big enough for a variety of activities.

Carefully maintained by the Forests Department for nearly thirty years, the landscape features a wide variety



of mature trees and colourful shrubs scattered in groups over undulating areas of lawn.

A running brook twists its way down the valley from a small dam and rocky outcrops, old tree trunks and shady forest groves offer the promise of exploration for children. Dotted here and there throughout the park, picnic facilities are in a variety of styles but all blend well with the surroundings, and toilet facilities are handy.

The office administrator at Mundaring Forest, John Butts took an interest in the park soon after he arrived in the district with his family in 1969. He has just completed an historic study of the area, largely prompted by the questions visitors keep asking about the park's establishment.

A century ago the property was originally owned by a Mr. Jecks, who developed it as a vineyard and also built a small cottage. It is thought that he planted the large spreading English oak which now dominates the

CAPTION: The last meeting at Mundaring - Mr. and Mrs. Devenish (R) talk to John Butts (L), Gordan Hample and Max Bending about the care of facilities at Fred Jacoby Park.

centre of the park.

In 1896 Mr. Jecks died and the property was then purchased by two brothers, Mathieson and Fred Jacoby, who named it "Portagabra". The partnership was dissolved in 1904 and Fred Jacoby became the sole owner. He developed the area into an orchard and grew vegetables and daffodils. He later built the Goldfields Weir Hotel in a period when the area became a favourite picnic spot for railway patrons.

Fred Jacoby died in 1954 and his daughter, Mrs. Devenish, later presented the fourteen and a half hectares to the people of Western Australia. It has been developed and maintained by the Department as a memorial arboretum for the purposes of recreation and education.

# IT'S OFFICIAL

The HARVEY WOOD UTILIZATION RESEARCH CENTRE (WURC) was officially opened at the end of last month, coinciding with the release of the Timber Utilization and Marketing Task Force report to Government.

The terms of reference of this joint private enterprise/government department group are:

- \* Produce a timber industry marketing plan designed to identify all markets, potential markets and customers with some indication of their needs and expectations;
- \* To identify local resources which would be used to supply those markets;
- \* To indicate the likely manufacturing processes and overall economics to grow the resources and supply the markets; and
- \* To propose research and product development requirements to service the marketing plan.

The research at HARVEY is aimed at improving the utilization of the State's timber resource and will play a key role in the overall strategies recommended by the Task Force.

VIP's and guests at the open day were treated to a conducted tour of the facilities, a brief seminar on the projects being under taken and an impressive lunch.

Technical Papers recently prepared by the WURC team include "A Survey of Building Materials used in House Constuction in W.A. 1983". (No.8) by Jeff Glass and Phil Shedley; and "A Survey of Timber used in Timber Manufacturing in W.A.". (No.11) also by Jeff Glass and Phil Shedley.

Technical paper No.11 is still at the printer but copies of the other reports are available from Phil Shedley - HQ ext.219.

To mark the opening of the new



Dave Evans officially opens Harvey's new Wood Utilization Research Centre (WURC) with Bev Campbell.

facilities at Harvey, Phil Shedley also arranged for a limited reprint of Bulletin No.1 "The Kiln Drying of Jarrah" (1919) by C.E. Lane-Poole, the first conservator.

---

## A STAR IS BORN

Nifty Numbat could be on his way to Hollywood - if the right 'agent' reads the September issue of the American Journal of Forestry .....

### " Numbat Joins The Fight

In the United States, there is Spunky Squirrel, Woodsy Owl, and Smokey Bear. They all help inform the public of the benefits of conservation. In Australia, Nifty Numbat spreads the conservation message.

Numbats are also known as whitebanded bandicoots or banded anteaters. The woodland critters are about 17 inches long and boast a bushy tail. There is no word from Australia as to whether or not Nifty Numbat, in the manner of his American counterparts, wears a hat, carries a shovel, or sports joggng shoes."

# SEED SHOT

Forests Department planners at Manjimup have just completed this year's survey of the Karri seed crop, using a .222 rifle to bring down samples. The seed forecasts are used to plan future logging operations.

Each shot down sample is checked for numbers within the stages of the Karri's four year seed cycle. The score obtained from this count is used to gauge the number of mature capsules likely to be available for regeneration and the year most suitable for them to be released.

Thirty-four proposed logging areas were tested in the programme which is carried out up to three years in advance of logging operations. The



**CAPTION:**

Pemberton Ranger and marksman, Greg Voight using the rifle to 'collect' seed from the tall Karri trees.

## FAMOUS TREES.....

Continued from Page 2.

famous by the painter Hans Heysen.

**Plane Tree** - The "friendly tree" of Handle's largo in the Opera "Serse".

**Spruce** - A magnificent tree, its timber better known as 'deal'.

**Maple** - A beautiful tree, still tapped for its delectable syrup.

**Yew** - The symbol of life, at the same time used for the making of the long bow, in its time a fearful weapon of war.

The establishment of the wood at this time is particularly appropriate - the Institute of Foresters of Australia celebrates its 50th anniversary in 1985.

This classic classified recently appeared in Rolling Stone magazine:

"HAPPY VASECTOMY, ERIC. Your loving wife and children: Chris, Aida, George, Carol, Yolanda, Joan, Shirley, Susan, Anita, Aileen, Jackie, Sheila, Bruce, Dean, Frank and Maxine."

progress of seed trees sampled in previous years is rechecked with binoculars.

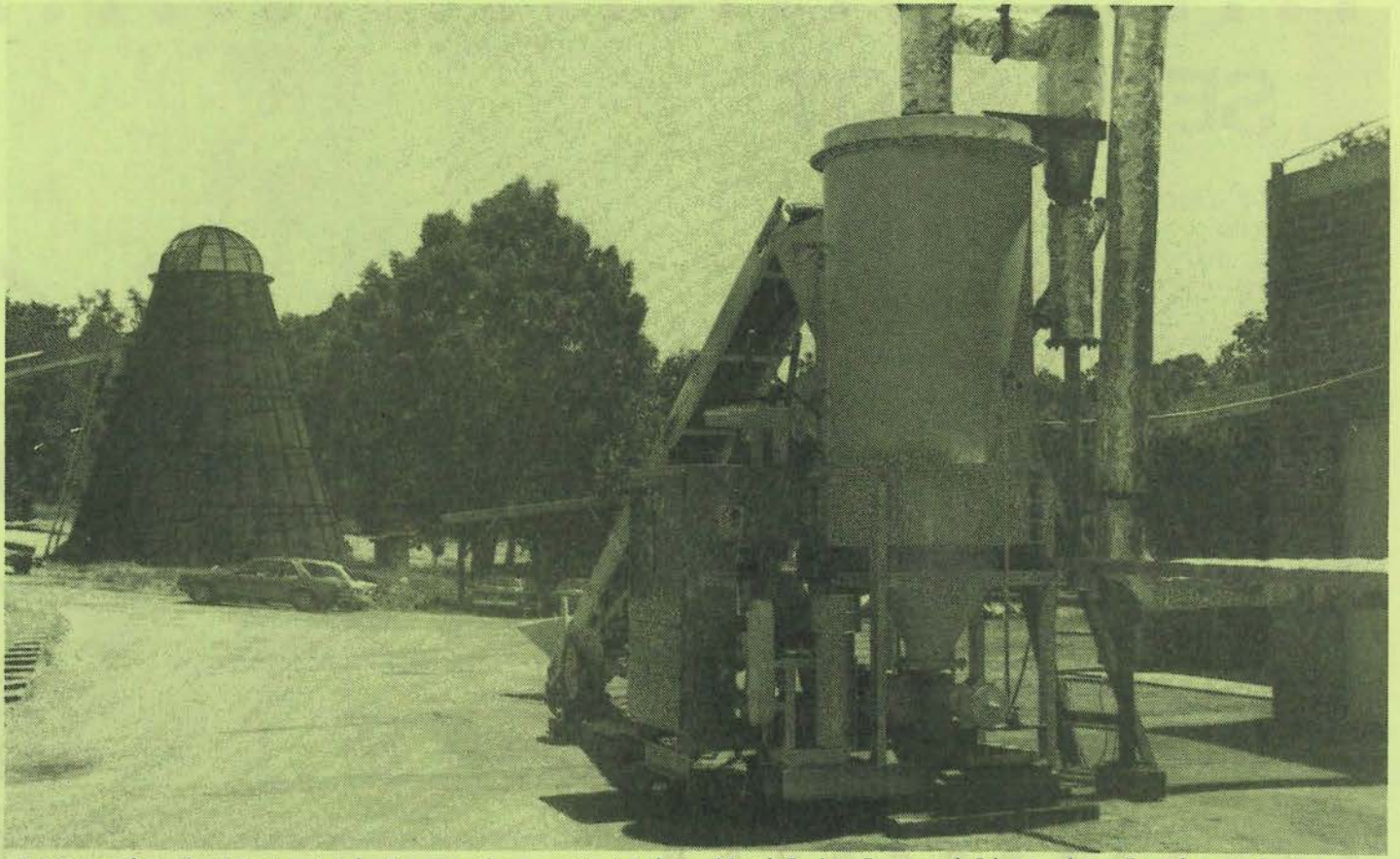
Depending on results and the timber industry's requirements, the Department decides which areas will be logged and by which method they can be reafforested.

In a good seed year suitable trees are left standing. After the logging operation a hot fire is used to clear the ground debris and scrub.

The fire also triggers a seed fall from the remaining trees, and 'natural' regeneration of the Karri forest takes place in the ash bed. Up to 120,000 seeds per hectare are required.

The seed trees are later removed.

If this 'natural' process cannot be achieved, the Department must arrange for nursery raised Karri seedlings to be planted by hand so that the forest cover is replaced.



Harvey's latest trial equipment, this fluid bed gasifier is designed to convert wood waste into an efficient source of kiln energy. The old mill's waste burner is in the background - soon to be demolished.



These sad specimens are located in Dwellingup, but you can see similar examples all over the South-West at this time of the year.

Surely, when a tree clashes with technology it would be kinder on the tree (and the eyes of the community) to replace it with a shrubby cousin.

The alternative, of course, could be to bury the S.E.C. - wires first!

## ACCIDENT REPORT

LOST TIME INJURY ACCIDENTS  
PER MILLION HOURS WORKED  
FOR 12 MONTHS TO 28 NOV. '84.

NARROGIN	0
KIRUP	0
BUNBURY	0
CADETS	0
KIMBERLEYS	0
KALGOORLIE	0
PILBARA	0
HEAD OFFICE	5
PEMBERTON	10
WALPOLE	16
MANJIMUP	16
MUNDARING	18
DWELLINGUP	21
JARRAHDALE	23
BUSSELTON	29
NANNUP	33
HARVEY	42
WANNEROO	56
COLLIE	68