

2(4) Feb 1985

DEPARTMENT OF PARKS AND WILDLIFE



LOGGING PIONEERS

Gandy Timbers have pioneered a new logging concept in their operations in the Channybearup bush (near Manjimup) by adapting pine logging equipment for the thinning of regenerating Karri forests.

The logging of mature Karri Forest has always impressed people with size of the logs produced and the size of the equipment needed to move the logs to the mill.

It is still not uncommon to see log trucks moving one large karri log on its own. However, following the logging of early years and the regeneration of the karri forest, the result now is a host of smaller trees.

To give the best of these trees room to grow and replace the old giants, some of the competition needs to be removed.



The Kockam Forwarder at work in the Karri regeneration.

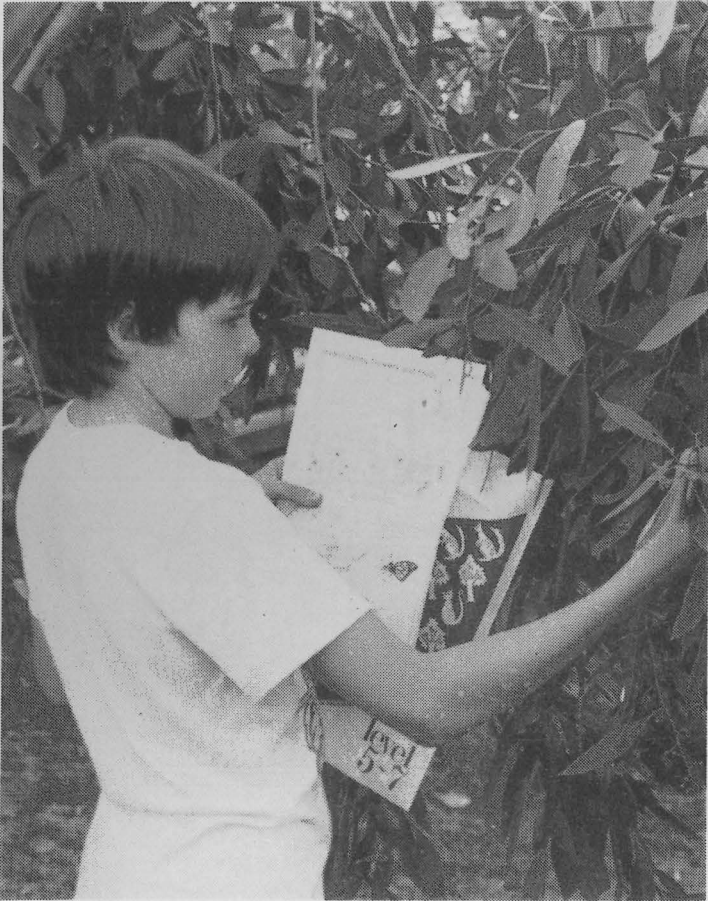
It is to handle a large number of smaller logs that Gandy's have adopted the new methods.

Two units are involved, the Kockum Forwarder, which picks the logs up and carries them out to the landing, and the three wheeled Spider, which assembles the logs ahead of the forwarder.

The thinning operation employs five men. It produced peeler logs, saw logs and chip logs, last year valued in excess of \$1 million in royalties. The work will make an increasingly valuable contribution to the management of the karri forest.

"Bush Telegraph" is the staff journal of the Forests Department in Western Australia. Any views or opinions expressed do not necessarily reflect those of the Department and articles published should not be taken as statements by the Department or the West Australian Government.

All enquiries and comments should be directed to Ian Kay, the editor, phone Como HQ ext. 327.



▲
Leith Kay renews his interest in Eucalypts with a field study sheet from the Level 5/7 forest pack.

FOREST EDUCATION

Encouraging primary school children to enjoy the forest environment is the theme of three Forest Packs being delivered to schools.

Put together with the co-operation of the Education and Forests Departments, the packs are the cornerstone of an environmental awareness programme being developed by the Government.

Each teacher's pack contains an introduction and a series of suggested work programmes and activity sheets designed to introduce the pupil to the environment and learning activities outside the classroom.

Graded in three primary levels, the subjects covered in each pack include science, maths, art and social studies, and closely follow the Western Australian school syllabus.

Packs will be available from Department offices for interested members of the public.

MURPHY'S CORNER

Murphy's Law, which in its most basic form states that "If something can go wrong, it will" is well known to almost every worker in management or research.

Variants of Murphy's Law as they apply to forestry, have never been well documented. While most of its theorems are familiar to us all, the effort has not yet been made to commit them to paper. This needs to be done, for the various propositions provide many a valuable lesson for the aspiring forests manager or administrator.

Here are a few of the better known "Axioms of Murphy", as contributed by our old friend D.F.O. Codswollop of Ballsdup Division.

1. For any sawmill, problems of management and control are always in inverse proportion to the permissible intake.
2. Irrespective of the season, a prolonged period of fine hot weather always follows a showdown with the industry over winter logging or stockpiling. (Corollary No.1 : An unseasonable drought always commences the day after planting starts. Corollary No.2 : Post-Mortem investigations of serious wildfires always occur during a snap period of intensive cold and heavy rain.)
3. In a karri seed tree regeneration area, full seedling germination will never appear until remedial planting is completed.
4. An unexpected upgrading of log quality by the industry always precedes an unexpected bit of permit control by a senior officer by a period insufficient for the D.F.O. to have heard about it.
5. The bloke hooking logs on the mill landing is fully and accurately informed about the details of F.D. staff transfers in advance of the officers who are themselves to be transferred.

CONTINUED ON PAGE 7.

"SILLY" SEASON AT SCHOOL

At conventional civilized educational establishments, December and January are months of reflection, rest and recreation. At the Cadet School (Dwellingup) the keynote has been activity-departure and arrival.

The first week of December 1984 was the last week of formal training for that year's cadets who, examinations over, left for annual leave before facing the realities of divisional life.

Farewell and best wishes therefore to Messrs. Brad Barton, John Bopp, Rory Butcher, John Carter, Steve Davis, Ivor Deas, Barry Hooper, Peter Jones, Grant Lamb, Brendan Peet, Leon Price and Phil Spencer.

The next fortnight, running up to the Christmas break was fully occupied with "Selection Schools". For the uninitiated these involve, for the thirty-two remnants of the interview process, a stressful sojourn at the Cadet School in the hope of picking up a Field Officer Cadetship.

The initiated will remember it well. The process has followed the same pattern for the past twelve years. The core consists of pruning and thinning local pine plots with bow (or "bushman") saws. To anticipate enquiry - "Yes, the blades have been changed - from one saw to the next!" This core is buffered by other slightly less arduous activities such as enduring mini-lectures and

STOP PRESS

Doctor Syd Shea has been appointed head of the Government's new Department of Conservation and Land Management.

Dr Shea was one of the principal architects of the new organization.

With the exception of four years post-graduate study in Canada, Dr Shea has spent his entire career with the WA Forests Department.

information sessions. Many serving Field Officers, now mature, respectable, senior and even stodgy, may recall, pukingly, that first fatal impact with pine silviculture.

Strange to relate, the quality of the work continues high. Even stranger, many of the aspirants facing their final interview profess undying love for forestry. Strangest of all, the accommodation arrangements etc are extravagantly praised.

By 21 December provisional offers had been made to twelve candidates, a further four being placed in a "reserve" category, in case any of the Chosen, eyeing their TAE results, should suddenly recall prior engagements. The 1st Year of the Cadetship is due to commence at Bunbury Technical College on 19 February 1985.

To complete the student comings and goings, eleven cadets who completed the first year at Bunbury Technical College in 1984 commenced their second year at Dwellingup on 7 January 1985.

They are:- Tammy Beltz, Paul Mammone, Andrew Norris, Brad Ellis, Ian McKinlay, Graham Price, Jason Goff, Gary Muir, Nicholas Woolfrey, Brian Macmahon and Jaron Creasey.

They were joined by Wayne Aggis, from the Harvey Division, who as an experienced Forest Worker and sometime Overseer will be training as a "Second Year Cadet". Following a four week period of induction of both theoretical and practical forestry, the class will, in February, move down to the Southern Region for Karri experience.

Barry Jordan, on completion of a three year training stint, transferred to the Harvey Division on 14 January. Many thanks to Barry for his good work and good company, and welcome to Morten Nilsson who replaces him.

FRANK PRIDHAM

CHANGES UNDERWAY

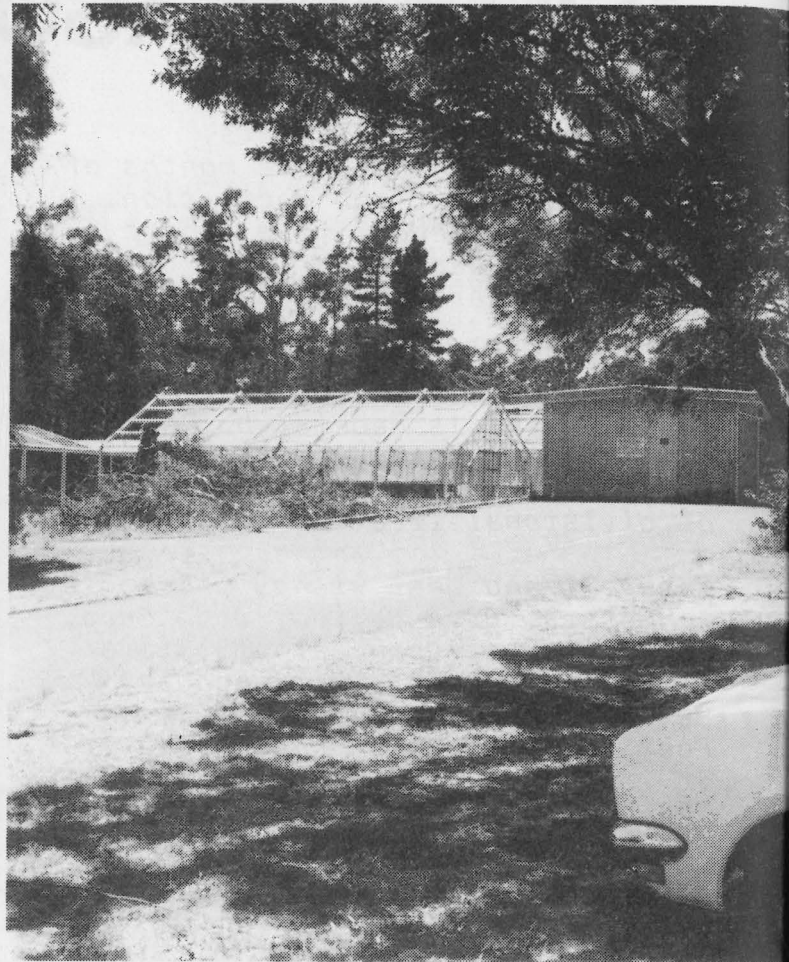
Northern Region have made the first move in the giant game of chess - amalgamation. Their new home is the old CSIRO establishment at Kelmscott.

Since the last issue of Bush Telegraph their entire module at Como has been sorted, boxed, shifted, unboxed and resorted - 30 minutes south on the Albany Highway.

Over the last couple of months renovations have been underway in readiness for the new arrivals. Laboratories have been stripped for conference rooms, cool rooms converted for file storage and paint and new carpet applied through-out. The addition of airconditioning and an updated telephone system completed the conversion to what is now a very presentable administration block for the Northern Region - including covered parking.



▲ Dave Lejeune, Julie Cook and Brian Cowcher getting ready to leave Como.



Once the telephones have been mastered the next major job will be the restoration of the grass and garden area which has been neglected.

Staff at the new office are George Peet (Superintendent), Eric Jenkins (Regional Inspector), Dave Lejeune (Regional Leader - Production), Drew Haswell (R/L Planning), Brian Cowcher (Senior Forester - Protection), Lois Cade (Clerical), and Julie Cook (Typist). Debbie Handler is also assisting in the office and two or three National Parks rangers are expected to arrive at a later date.

Drew Haswell and Dave Lejeune both plan to relocate their families to cut down cross town drives.

Some changes to the Region's Boundaries are underway. Narrogin is expected to be included in the Wheatbelt, the southern boundary will be relocated to include the Lane-Poole Reserve, and a new Metropolitan Region is to be formed.



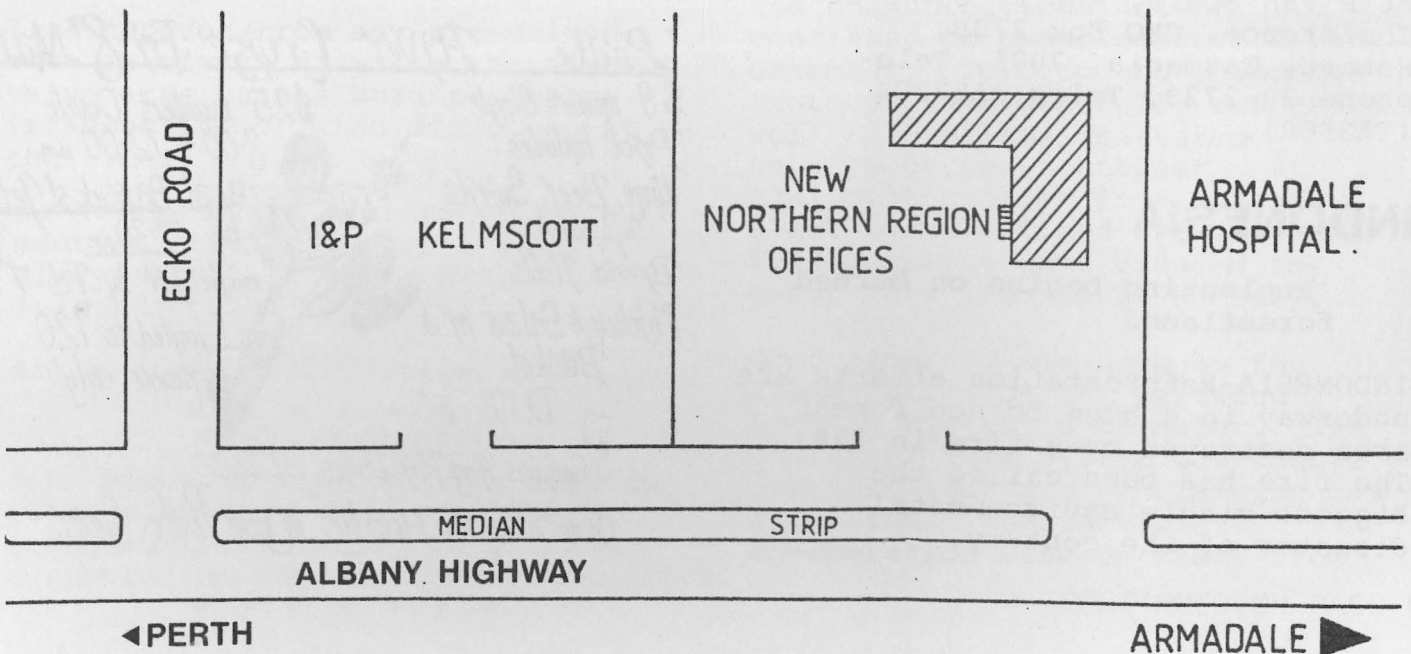
◀ Left : Glass houses and storage sheds to the left of the new block.

Right : The new administration ▲ offices of the Northern Region.

The address of the Northern Region office (see map) is 3044 Albany Highway, Kelmscott and the phone number (09) 390 5977.

PLEASE NOTE: KELMSCOTT I & P is included on the same switch board.

LOCATION MAP
NORTHERN REGION OFFICE.



LOOKING ABROAD



TASMANIA

Tasmanian conference for foresters.

Satisfying national and regional needs through the forest industry is the theme of this year's Australia and New Zealand Institute of Foresters' (ANZIF) conference to be held in Tasmania.

The objectives of the conference, which will take place at the University of Hobart from 20-24 May, are:

to confirm and build links between foresters in New Zealand and Australia;

to explore the forestry needs of communities, how they are identified and met;

to examine future markets for wood and wood products;

and to provide a forum for discussion at sessions, field trips and informally.

Four half day sessions will cover the following themes:

'Australia and New Zealand - competitors or collaborators';
'Land use in indigenous forests - principles and case studies';
'Another resource - small private forests'; and 'Recent developments for practical forestry.'

Registration for the conference is being distributed for return by March. All enquiries should be addressed to:

Mr R Van Schie, ANZIF '85
Conference, GPO Box 270B,
Hobart, Tasmania, 7001, Telephone 30-2723, Telex AA57204 (TASFOR).

INDONESIA

Replanting begins on burned forestland.

INDONESIA-Reforestation efforts are underway in a huge Borneo forest area destroyed by a fire in 1983. The fire has been called the biggest single environmental disaster of the century.

The severity of the disaster was not clear until April of last year, when the International Union for Conservation of Nature and Natural Resources cited that 3.5 million hectares (about 13,500 square miles) of tropical forest land had been destroyed.

Indonesian officials have confirmed the international union's findings.

According to Forestry Inspector General Hendri Santoso, the cause of the fire is unknown, but he has not ruled out the possibility that logging concessionaires ignited the dry forest, hoping it would cover their neglect in carrying out obligations to plant a seedling for every tree harvested.

East Kalimantan normally is one of the dampest parts of the world. However, a two-year drought had made the forest vulnerable to fire.

Indonesia has more of the world's remaining tropical moist forest than any other nation except Brazil, about half of it in Kalimantan.

Plans call for massive replanting of trees for the next 15 years but that will restore only half of the burned forestland. The fire raged in the Borneo province of East Kalimantan from February to June of last year.

"Pirate River Cruise" Fri 8th March

\$9[~] member's Single

Price Includes:

*Wine, Beer, Spirits
Soft drinks.*

Bread Rolls,

*Chicken & Salad in a
Basket.*

♪ D. J. ♪

Enquiries ring Phil Davies ext 260.

Come along Me Hearty's in your Pirate Gear.

\$25[~] member's Double

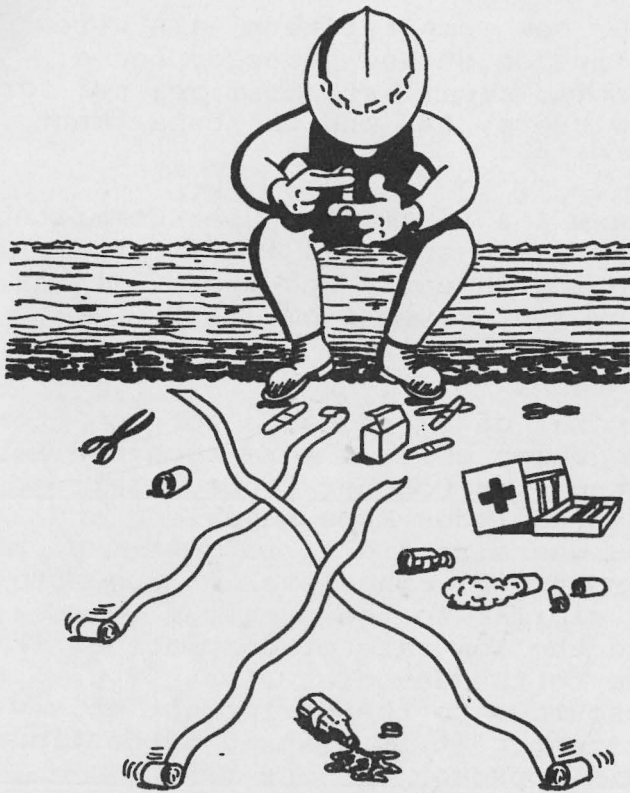
8:00 - 12:00 p.m.

*Be at Barrack st Jetty
by 7:30 p.m.*

monies & N^s by Feb 7!

*Limited to 120
people only!*





YOU NEVER KNOW WHO WILL NEED
IT NEXT --- KEEP YOUR KIT
CLEAN TIDY AND COMPLETE.

MURPHY'S CORNER

CONTINUED FROM PAGE 2.

6. Bulldozers, heavy duties and V.H.F. repeaters always break down for the first time in months on the eve of a bushfire crisis.

7. A hopover from any prescribed burn is always drawn to the highest value area on the burn perimeter - irrespective of wind direction at the time!

8. At any Staff Conference or meeting, those to arrive late will always comprise those with the least distance to travel.

Any further contributions?

• • • • •
MORE GREAT NEWS:

John Asher (Kirup) and Liz Stretch (Grimwade) have announced their engagement.....Kirup is gaining a reputation for forestry connections.

• • • • •

TERMINAL TALK

The Perkin-Elmer computer was available for 97.8% during December. The major problems were an equipment failure in the computer memory (3 hours) and more changes to the speed of terminals (45 minutes). The faulty memory has been replaced and should not cause further problems.

The new Fire Behaviour system received attention from Computing and Protection staff throughout December. Gerard van Didden spent considerable time in divisions training staff. Many problems were corrected, including some that had been affecting calculations in the old system for the past couple of years. The number of problems now being reported has diminished but it is still important for divisions to report difficulties with this system.

Several power conditioners in divisions were found to be busy or disconnected when Dave Nicholson visited in late December. The faulty units have been replaced and this should reduce the number of errors at these sites.

The communications network continued to cause concern during December. Telecom and Computer Protocol have generally responded well to problems scattered throughout the southwest. An equipment problem in a central black box was fixed over New Year. This seems to have reduced the error rate from early January.

Good progress was made on the installation of the Hardwood Logging system in December. The design of this system was completed over New Year and programming has commenced. Considerable co-operation between staff from

CONTINUED ON PAGE 8.

TERMINAL TALK CONTINUED FROM PAGE 7.

Computing and Utilization was necessary to resolve details and problems resulting from our examination of the antiquated manual system. The new system has been demonstrated to Utilization staff and the three regions.

The feasibility study for the Records Management System (RMS) was completed and submitted to the Department of Computing and Information Technology. After approvals, the equipment and programmes were ordered. The new equipment includes an increase of 2.75 million bytes for the Perkin-Elmer computer memory, doubling the present capacity and allowing greater flexibility for all users.

Four new computer terminals were delivered during December and a further seven have been ordered for new users, RMS and the Department of CALM.

A new I & P Computer User Committee was formed and held its first meeting in early December. It has representatives from I & P stations, Mapping, Landscaping and Planning.

A total of 37 requests for computer programme changes were recorded for the period October to December. This excludes Fire Behaviour and RMS where recording is just commencing. The level of requests is similar to the previous quarter, and the low rate of completions is due to the devotion of staff resources to the development of new systems. It is planned to continue this approach for the next 6 months, although some changes will be required for the new Department.

TREVOR MORGAN

TRACK CLOSED

The Department has temporarily closed the Bibbulmun Bushwalking Track between Record Road and just south of One Tree Bridge, near Manjimup, in order to carry out prescribed burning.

Particular weather conditions are required for the successful completion of the task, and this section of the track is not likely to be reopened until April, 1985. The distance involved in the closure is about 12 kilometres Section 22c to 23b in the Department's "Guide to the Bibbulmun Bushwalking Track".

An alternative northerly route for bushwalkers travels west along Top Formation, south on Navy Road, west on Pailings Road, and then north on Austin and Henwood Roads to One Tree bridge where the designated track can be resumed.

The same roads may be used for people heading in a southerly direction from One Tree Bridge.

Care must be taken while walking these roads as some are used regularly by heavy trucks.

ACCIDENT REPORT

LOST TIME INJURY ACCIDENTS
PER MILLION HOURS WORKED
FOR 12 MONTHS TO 31st JAN' 1985

NARROGIN	0
KIRUP	0
BUNBURY	0
CADETS	0
KIMBERLEYS	0
KALGOORLIE	0
PILBARA	0
MUNDARING	0
HEAD OFFICE	7
PEMBERTON	10
MANJIMUP	12
WALPOLE	16
DWELLINGUP	16
JARRAHDAL	23
BUSSELTON	23
NANNUP	33
HARVEY	34
WANNEROO	44
COLLIE	58