

CONSERVATION  
LIBRARY, KENSINGTON



080267-18.02

**JOURNAL**

MONTHLY STAFF BULLETIN

18(2) Feb 1969

DEPARTMENT OF PARKS AND WILDLIFE

**STAFF**

**BULLETIN**

CALM LIBRARY ARCHIVE  
NOT FOR LOAN



FEBRUARY, 1969

VOL. XVIII, No. 2

DEPARTMENT OF FISHERIES AND FAUNA  
108 Adelaide Terrace, Perth, Western Australia

## **HONORARY FAUNA WARDENS' REGIONAL CONFERENCE**

This initial conference was held on Friday, February 14, 1969 in Fauna District No. 9, and of the 72 honorary wardens invited, 35 attended. The town of Beverley was selected because of the interest shown over the years by honorary wardens in that Shire and because of the facilities available there.

Most of the participants expressed the opinion that the conference proved fruitful and many informative discussion sessions resulted. It provided the opportunity to exploit a new avenue of public relations for this Department and fostered better communications and education for the participants. In a review of the conference many of those present spoke of its value in appreciative terms and were glad of the opportunity provided to hear comments from the Department and express their own views.

The final cost figures are not as yet available but it appears that actual outlay will be approximately \$220.

The catering was in the capable hands of the Beverley Branch of the C.W.A. and no complaints were received.

It was felt by the honorary wardens present that one conference in each fauna district every two years may prove often enough. A suggestion for future conferences that a field session be included will be considered if the particular district in which the conference is being held has suitable demonstration facilities. This would require only a slight alteration to the programme used at Beverley.

## RESERVE MANAGEMENT

The following radio talk was given on the A.B.C. by Dr. A.A. Burbidge, Fauna Research Officer:-

"This and the next two talks in the series will be given by members of the fauna section of the Department. Today's talk will deal with some of the problems of fauna conservation on reserves.

Western Australia has about four million acres of land classified as fauna sanctuaries and game reserves, the latter being open to duck shooting in season. This area is small being only 0.6% or 1/160th of the total area of the State and comparable in size to four or five cattle stations. Much of the reserved land is outside the south-west land division, the total within the division is about 1,180,000 acres or 1.8%.

When the land around a reserve is cleared for farming the character of the reserve is immediately changed. What was once part of a large area of unbroken bushland now becomes an island surrounded by country that most of the animals are unable to inhabit. At that time the reserve commences a change in its character due to outside pressures such as the invasion of weeds like wild oats and introduced animals like rabbits, foxes, cats, dogs, rats and mice. Fires become more frequent and this affects the plants. Normally the reserve will slowly but inevitably change and over a period of many years the plant associations will deteriorate and the animals they support will decrease in variety and numbers.

The rate and amount of deterioration depends on a number of factors, the most important of which is the size of the reserve. Since most of the pressures I have mentioned enter from the perimeter of the reserve smaller reserves will be affected much more quickly because they have a relatively greater circumference and a shorter distance between the boundary and the middle of the area. On the other hand, a large area has a relatively smaller perimeter compared to its total area and a long distance from the perimeter to the central region. Thus the invasion of introduced plants and animals is a much slower process and eventually a buffer zone is created around the perimeter of the reserve leaving the central area undisturbed.

This outside pressure is only one factor affecting the change in the character of the bush in a reserve. With a

small reserve there is a much greater chance that a fire will burn out the whole area and destroy all the food and cover of a particular species leading to its extinction in the area. In a large reserve pockets of land will remain unburned and the animals left there will repopulate the area as it recovers. Also a large reserve will contain a greater number of plant associations and therefore will also have a greater variety of animals.

What, then, is the minimum size for a reserve? This is a difficult question to answer because there is little data available on the problem. In addition, a suitable size in one area would not be suitable in another - in the desert a greater area is necessary than in a rain forest because of the lower density of plants and animals in dry country. The Australian Conservation Foundation has picked 10,000 acres as an arbitrary figure but research in this State has shown that this figure is too low and, in semi-arid country at least, 50,000 acres is more correct as the minimum size for an area which will continue to harbour the full range of plants and animals.

Some reserves greater than this size already exist and more can be created in areas of the State which have yet to be thrown open for intensive farming. However, in the heavily populated areas of the State reserves of this size do not exist and cannot be created. This does not mean, however, that reserves smaller than 50,000 acres are of no use, it means that they require management. For this purpose the Department of Fisheries and Fauna has recently created a reserves management unit.

At the moment the task of this unit is to develop techniques. There are few basic techniques available and there has been little work on this problem in the past, either here or overseas. The management of a piece of natural bush is much more complex than farm management because instead of managing for a few species of plants and animals one must maintain complexity where there are large numbers of plant and animal species. One technique we are studying is putting firebreaks through reserves to prevent the whole area being burned at once, coupled with control burns at different times of the year and at various intervals depending on the types of vegetation and the requirements of the animals. Along with this it is necessary to understand the life history and food requirements of the animals you are managing so you can measure the effects of the management techniques on the animals.

The development of management techniques for existing

reserves will continue over a long period of time. However, it is impossible to create bushland in its original complexity from cleared country so we must continue to set aside reserves and safeguard the ones we have over the next few years for we will soon be in the position where there is no more natural bushland which can be reserved.

\* \* \* \* \*

<p><u>SENATE SELECT COMMITTEE ON WATER POLLUTION</u>          (Article reprinted from "Fur, Feathers &amp; Fins"          Fisheries &amp; Wildlife Dept. Victoria          No.118, Dec. Jan. 1968-9)</p>
--

The Senate has appointed a Select Committee to inquire into and report upon water pollution and quality of water for different uses in Australia. The Committee has been directed to take into account such factors as causes and effects and methods of prevention and control.

At its first meeting, Senator G.S. Davidson of South Australia was elected as Chairman and the Committee then decided that it would first meet in Canberra to discuss with experts from the various Commonwealth Departments problems associated with water pollution and water quality and the role of the Commonwealth in these fields.

No plans have yet been formulated for the conduct of public hearings by the Committee, but it is anticipated that the Committee will meet in the various States and take evidence from interested persons should the demand be sufficient for this. Any persons or bodies who would like to submit views for consideration by Committee Members, or would like to make further inquiries about the Committee's activities, should contact the Secretary at the Senate, Parliament House, Canberra, A.C.T.

\* \* \* \* \*

Inspector P.J. Pennings is relieving the Pearling Superintendent, Mr. Baird, at Broome but will be expected back at Perth early next month.

\* \* \* \* \*

Relieving Inspector Faulkner is filling in for Inspector Ron Smith at Shark Bay.

\* \* \* \* \*

# How to Remove a Fish Hook

(AUSTRALIAN DOCTOR'S METHOD)

The following article is reprinted from the June, 1968, issue of "Commercial Fishing", published in Auckland, New Zealand:-

"Hooks embedded in the hand or fingers are one of the many occupational hazards faced by fishermen.

The most common method of removing an embedded fish hook is to force the hook onwards until the point pierces the skin again, then file or break off the barb and draw the curved part of the hook along the track of entry. This is known as the "push through" method.

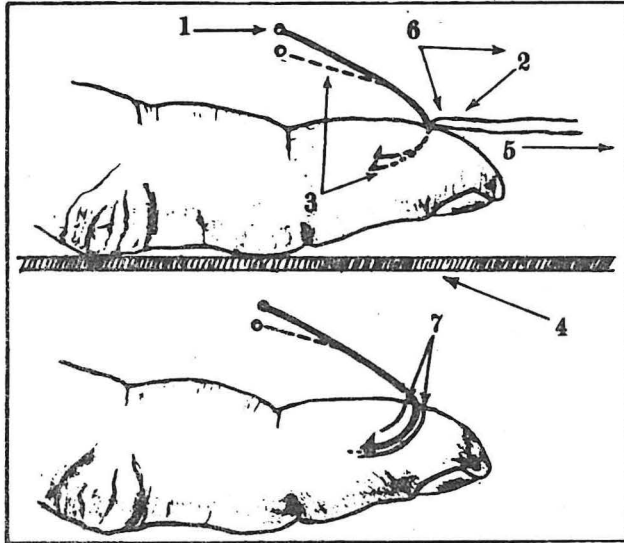
Circumstances can arise, however, when the hook will have to be pushed through a considerable distance by a curved route before the barb emerges from the skin. When this occurs a small incision is sometimes made down to the barb before the hook is pulled out backwards. This is the "pull out" method. Both operations can be extremely painful unless a local anaesthetic is administered.

A quicker method has been described by Dr. Theo Cook, of Carramulka, South Australia, in the Medical Journal of Australia. He says it is used by fishermen in St. Vincent's Gulf who flick the embedded hook out with a piece of string, dip the finger in the sea and continue fishing.

Dr. Cook says that medical colleagues to whom he referred the method had not heard of it and most of them expressed disbelief at the practice.

The doctor describes the string method as follows:

A piece of ordinary string is made into a loop, the ends are wrapped firmly around the manipulator's right index finger, and the loop, some 18 inches or 45 cm. long, is placed over the shank. The fish-hooked finger is placed upon a firm surface, the eye pointing to the left of the manipulator, who then grasps the eye and shank with the thumb and index finger of his left hand, which rests upon the patient's hand. He holds the shank rigid and depresses it. This disengages the barb and is painless provided that the hook is not moved sideways.



1. Eye and shank of fish hook. 2. Centre of loop of string. 3. Effect of slight depression of shank, with subsequent disengagement of barb. 4. Patient's finger on bench. 5. Direction of sharp pull on string. 6. Direction followed by hook when string is jerked—that is, upwards, then far across the room. 7. Track of entry of barb and hook. Dotted line shows disengagement of barb with depression of shank.

The string is slowly straightened out horizontally in the plane of the long axis of the shank. This is a trial run made for two purposes: (i) to make sure the string will not tangle itself on the coat buttons; (ii) to bring the centre of the loop gently against the curve of the hook. The tip of the manipulator's left third finger then holds this central point of the loop of string against the juncture of the hook with the patient's finger. The manipulator's right hand is brought back to the hook and suddenly jerked away again, with full follow-through, in the same direction as in the trial run, spinning the hook back out of the finger without enlarging either the track or the hole of entry.

For hooks larger than a size 1 whiting hook, a double loop and a loop length of 24 to 30 inches (51 to 75 cm.) are used. Full-sized snapper hooks present a quite different mechanical problem.

### *Staff Notes*

The Chief Inspector, Mr. J.E. Bramley and the Supervising Inspector, Mr. J.E. Munro, conducted an aerial survey of coastal waters from Perth to Geraldton on Wednesday, February 26. At Geraldton, they picked up Senior Inspector McLaughlan and flew north to Kalbarri and westward where they completed a comprehensive patrol of the Abrolhos Islands.

Mobile patrols, nos. 1 and 2, will be patrolling the waters off Rottnest Island in the 15 ft. 6 ins. aluminium speed boat from the Lancelin district.

Assistant Inspector Silbert who was relieving at Bunbury has now been appointed to that position.

## LAWFUL NETS

[Extract from Government Gazette (No. 30) of  
19th April, 1962.]

Fisheries Act, 1905-1961.

### PROCLAMATION

WESTERN AUSTRALIA, } By His Excellency Lieutenant-General Sir Charles  
TO WIT, } Henry Gairdner, Knight Commander of the Most  
CHARLES HENRY } Distinguished Order of Saint Michael and Saint  
GAIRDNER, } George, Knight Commander of the Royal Victorian  
Governor, } Order, Knight Commander of the Most  
[L.S.] } Excellent Order of the British Empire, Com-  
panion of the Most Honourable Order of the  
Bath, Governor in and over the State of  
Western Australia and its Dependencies in the  
Commonwealth of Australia.

F.D. 38/44, Ex. Co. No. 739.

IN pursuance of the provisions of section 19 of the Fisheries Act, 1905-1961, I, the Governor of the State of Western Australia, by and with the advice and consent of the Executive Council, do hereby declare as follows:—

- (a) That with respect to nets known as or called "set nets," nets of not more than 500 yards in length having meshes throughout of not less than two inches and not less than 45 meshes in depth shall, when used or intended to be used in those waters of Peel Inlet and Harvey Estuary which have a depth of not less than five feet, be lawful nets.
- (b) That with respect to nets known as or called "set nets," nets of not more than 500 yards in length having meshes throughout of not less than two and a half inches shall, when used or intended to be used in those waters of Peel Inlet and Harvey Estuary, which have a depth of not more than five feet, be lawful nets.
- (c) That with respect to nets known as or called "hauling nets," when used or intended to be used for the catching of mullet and yellow-eye mullet, nets of not more than 800 yards in length having meshes throughout of not less than two inches shall when used or intended to be used in the waters of Peel's Inlet and Harvey Estuary, be lawful nets.
- (d) That with respect to nets known as or called "whiting set nets" for catching whiting, nets of not more than 300 yards in length having meshes throughout of one and three-quarter inches and of not more than 33 meshes in depth shall, when used or intended to be used in those waters of Peel Inlet and Harvey Estuary which have a depth of not less than six feet, be lawful nets.
- (e) That with respect to nets known as or called "whiting hauling nets" for catching whiting, nets of not more than 120 yards in length, having meshes throughout of one and three-quarter inches shall, when used or intended to be used in the waters of Peel's Inlet and Harvey Estuary, be lawful nets. It shall be lawful for nets known as or called "whiting hauling nets" to be used in conjunction with nets known as or called "mullet and yellow-eye mullet nets."
- (f) That with respect to nets known as or called "garfish nets" for the catching of garfish, nets of not more than 60 yards in length having meshes throughout of not less than one and one-eighth inches shall, when used or intended to be used in the waters of Peel's Inlet and Harvey Estuary, be lawful nets. It shall be lawful for nets known as or called "garfish nets" to be used in conjunction with nets known as or called "mullet and yellow-eye mullet hauling nets."

## REGULATIONS

Fisheries Act, 1905.

Fisheries Act Regulations.

### Prohibition of Certain Types of Lines.

11. No person shall use or attempt to use, for the purpose of catching fish, any line other than a line held in the hand or a rod and line, in any of the following waters, namely:—(a) Harvey Estuary; (b) Murray River; (c) Peel Inlet; (d) Serpentine River; or (e) The tributaries thereof.

### "Meshing" or "Set" Nets.

12. No person shall cast, shoot, fix, or set any "meshing" net, or any "set" net—

- (a) in the waters of Peel Inlet, or of Harvey Estuary within fifteen fathoms (30 yards) of any other "meshing" net or any other "set" net already cast, shot, fixed, or set in the waters aforesaid;

### Mesh of Set Nets.

12A. No person shall in any of the waters in this regulation mentioned use for the purpose of taking fish any set net which is not lifted and cleaned at least once in every hour during the time the net is set and which net has—

- (a) in the case of the waters of the Swan River, Peel Inlet (including Harvey Estuary) and Leschenault Inlet and any of their affluents or tributaries meshes less than two and one-half inches throughout; and

12C. No person shall set any fishing net in any of the waters of Princess Royal Harbour, Albany; Oyster Harbour, Albany; Peel Inlet; Harvey Estuary; or Wilson Inlet, Denmark, except within any period commencing one and one-half hours before sunset on any day and ending one and one-half hours before the next sunrise. Any fishing net set within any such period shall be picked up no later than one and one-half hours after the sunrise next following the setting of the net.

# Prawning

[Extract from Government Gazette (No. 61) of  
17th December, 1954.]

Fisheries Act, 1905-1951.

## PROCLAMATION

WESTERN AUSTRALIA, } By His Excellency Lieutenant-General Sir Charles  
TO WIT, } Henry Gairdner, Knight Commander of the Most  
CHARLES HENRY } Distinguished Order of Saint Michael and Saint  
GAIRDNER, } George, Knight Commander of the Royal Vic-  
Governor. } torian Order, Companion of the Most Honour-  
[L.S.] } able Order of the Bath, Commander of the Most  
} Excellent Order of the British Empire, Governor  
} in and over the State of Western Australia and  
} its Dependencies in the Commonwealth of  
} Australia.

F.D. 46/35, Ex. Co. No. 2368.

IN pursuance of the provisions of section 19 of the Fisheries Act, 1905-1951, I, the Governor of the State of Western Australia, by and with the advice and consent of the Executive Council, do hereby declare as follows:—That with respect to nets known as or called "hand scoop nets," nets of 12ft. in length having meshes throughout of not less than  $\frac{3}{4}$ in. shall, when used or intended to be used for catching prawns only in the waters of Peel's Inlet (Mandurah) and the Harvey Estuary, be lawful nets.

Given under my hand and the Public Seal of the said State, at Perth, this 9th day of December, 1954.

By His Excellency's Command,

L. F. KELLY,

Minister for Fisheries.

GOD SAVE THE QUEEN ! ! !

[Extract from Government Gazette (No. 22) of  
4th March, 1966.]

FISHERIES ACT, 1905-1965.

Department of Fisheries and Fauna,  
Perth, 4th March, 1966.

F.D. 46/35.

THE Minister for Fisheries and Fauna, pursuant to the powers conferred by section 11 of the Fisheries Act, 1905-1965, doth hereby vary the notice dated 21st January, 1966 (published in the *Government Gazette* on 28th January, 1966), prohibiting all persons from taking any fish whatsoever by means of fishing nets in any of the portions of Western Australian waters specified in the schedule thereto, from the date of publication of that notice in the *Government Gazette*, by providing that during the currency of the said notice it shall be lawful to use a prawn net not exceeding 12 feet in length and having meshes of not more than one inch throughout for the capture of prawns only in the waters of that part of the Channel Entrance to Peel Inlet described in the schedule hereto, provided that no such net is set closer than 12 feet to any other such net set therein, or closer than 25 feet to any part of the platform abutting on the Mandurah Bridge and provided further that no such net is set in the fairway of such Channel Entrance.

### Schedule.

1. The whole of the waters of the Channel Entrance to Peel Inlet (Mandurah) bounded on the north by a line drawn in an easterly direction from the extremity of the western point of entrance (at the bar) to a point on the mainland on the eastern shore, and on the south by lines drawn in an easterly direction from the south-eastern corner of Murray Location No. 5 to the southern extremity of Channel Island; thence to the south-western extremity of Creery Island and by its southern foreshore to the eastern extremity of that Island; thence by a line drawn in a north-easterly direction to a point on the foreshore of the mainland.

G. C. MacKINNON,  
Minister for Fisheries and Fauna.

(Extract from Government Gazette (No.67)  
of 11th August, 1967)

FISHERIES ACT, 1905-1966.

Department of Fisheries and Fauna,  
Perth, 31st July, 1967.

F.D. 46/35.

THE Minister for Fisheries and Fauna, pursuant to the powers conferred by section 11 of the Fisheries Act, 1905-1966, doth hereby vary the Notice dated 21st January, 1966 (published in the *Government Gazette* on 28th January, 1966), prohibiting all persons from taking any fish whatsoever by means of fishing nets in any of the portions of Western Australian waters specified in the schedule thereto, providing that during the currency of the said notice it shall be lawful to use prawn nets known as or called "hand dip nets", nets when held in the hand and having a diameter of not more than two feet and having meshes throughout of not less than  $\frac{3}{4}$  inch, when used or intended to be used for catching prawns only in the waters of the Murray River including the tributaries thereof.

G. C. MacKINNON,  
Minister for Fisheries and Fauna.

## WEEKEND CLOSURE

(Extract from Government Gazette (No.67)  
of 11th August, 1967)

FISHERIES ACT, 1905-1966.

Department of Fisheries and Fauna.  
Perth, 31st July, 1967.

F.D. 87/39.

THE Minister for Fisheries and Fauna, pursuant to the powers conferred by sections 10 and 11 of the Fisheries Act, 1905-1966, doth hereby prohibit all persons from taking any fish whatsoever by means of fishing nets, except prawn nets, known as or called "hand trawl nets" of not more than 12 ft. in length, having meshes throughout of not less than  $\frac{3}{8}$  inch when used or intended to be used for catching prawns only in that portion of Western Australian waters described in the schedule hereunder during the following periods:—

- (a) Commencing at 8 o'clock in the forenoon of Friday in each week and ending at 7 o'clock in the forenoon of the Sunday next following, from 1st April to 30th September, inclusive, in each and every year.
- (b) Commencing at 8 o'clock in the forenoon of Friday in each week and ending at 5 o'clock in the forenoon of the Sunday next following, from 1st October to 31st December, inclusive, and from 1st January to 31st March, inclusive, in each and every year.

The notice dated 18th February, 1966, and published in the *Government Gazette* (No. 21) of 25th February, 1966, is hereby cancelled.

G. C. MacKINNON,  
Minister for Fisheries and Fauna.

### Schedule.

The whole of the waters of Peel Inlet and Harvey Estuary.

## TOTAL CLOSURE

[Extract from Government Gazette (No. 58) of  
3rd July, 1964.]

Fisheries Act, 1905-1962.

### PROCLAMATION

WESTERN AUSTRALIA, } By His Excellency The Honourable Sir John  
TO WIT, } Patrick Dwyer, Knight Commander of the Most  
JOHN PATRICK DWYER, } Distinguished Order of Saint Michael and  
Lieutenant-Governor. } Saint George, Lieutenant-Governor in and over  
[L.S.] } the State of Western Australia and its De-  
pendencies in the Commonwealth of Australia.

File No. 87/39, Ex. Co. No. 1267.

IN pursuance of the provisions of section 10 of the Fisheries Act, 1905-1962, I, the Lieutenant-Governor in the State of Western Australia, by and with the advice and consent of the Executive Council, do hereby prohibit all persons from taking any fish whatsoever by means of fishing nets in all that portion of Western Australian waters defined in the schedule hereto, from the 1st July, 1964, to the 30th June, 1969, inclusive.

### Schedule.

That portion of Western Australian ocean waters lying to the south and south-east of a line drawn from the northernmost extremity of Robert Point to a point on the ocean foreshore lying one-half mile north-east of the bar at the entrance to Peel's Inlet, wherever such bar may be.

Given under my hand and the Public Seal of the said State, at Perth, this 22nd day of June, 1964.

By His Excellency's Command,

ROSS HUTCHINSON,  
Minister for Fisheries.

GOD SAVE THE QUEEN ! ! !

## TOTAL CLOSURE

[Extract from Government Gazette (No. 8) of  
28th January, 1966.]

FISHERIES ACT, 1905-1965.

Department of Fisheries and Fauna,  
Perth, 21st January, 1966.

F.D. 87/39.

THE Minister for Fisheries and Fauna, pursuant to the powers conferred by section 10 of the Fisheries Act, 1905-1965, doth hereby prohibit all persons from taking any fish whatsoever by means of fishing nets in any of the portions of Western Australian waters specified in the schedule hereto, from the date of publication of this notice in the *Government Gazette*.

### Schedule.

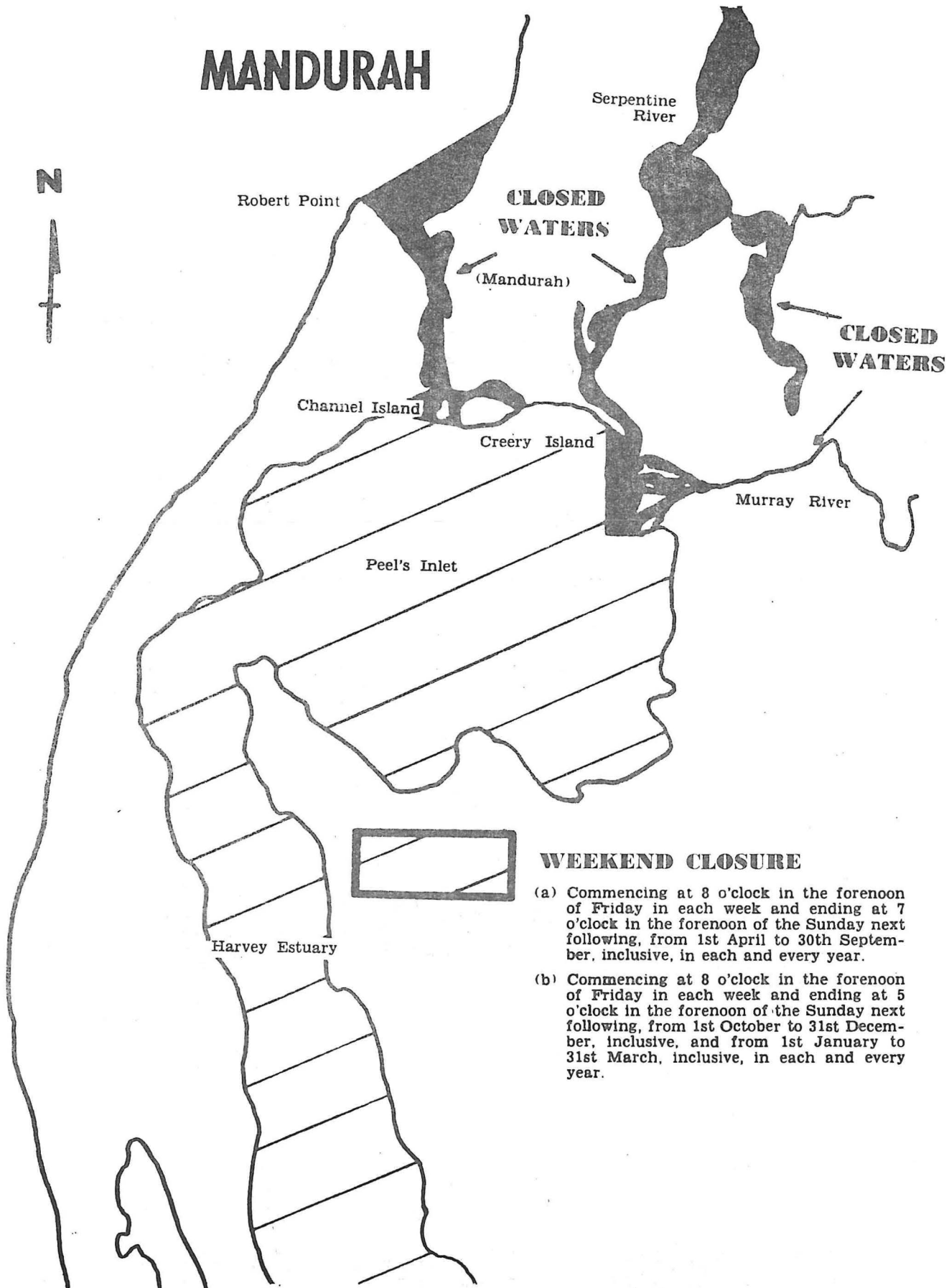
1. The whole of the waters of the Channel Entrance to Peel's Inlet (Mandurah) bounded on the north by a line drawn in an easterly direction from the extremity of the western point of entrance (at the bar) to a point on the mainland on the eastern shore, and on the south by lines drawn in an easterly direction from the south-eastern corner of Murray Location No. 5 to the southern extremity of Channel Island; thence to the south-western extremity of Creery Island and by its southern foreshore to the eastern extremity of that island; thence by a line drawn in a north-easterly direction to a point on the foreshore of the mainland.

2. The whole of the waters of the Serpentine River, the Murray River and the Dandalup River (including estuaries, tributaries, lakes and lagoons the waters of which during any time of the year have access directly or indirectly to the sea) lying north, east and south-east of a line drawn from a point on the eastern foreshore of Peel's Inlet situated east of the southernmost point of Goongoolup Island and extending in a westerly direction half a mile; thence in a northerly direction to the foreshore of Peel's Inlet to a point lying west of the western side of the entrance to the Serpentine River.

3. The whole of the waters of the Harvey River and that portion of the Harvey Estuary south of a line, being the prolongation easterly to the eastern shore of the estuary of the northern boundary of Murray Location No. 479.

G. C. MacKINNON,  
Minister for Fisheries and Fauna.

# MANDURAH



## WEEKEND CLOSURE

- (a) Commencing at 8 o'clock in the forenoon of Friday in each week and ending at 7 o'clock in the forenoon of the Sunday next following, from 1st April to 30th September, inclusive, in each and every year.
- (b) Commencing at 8 o'clock in the forenoon of Friday in each week and ending at 5 o'clock in the forenoon of the Sunday next following, from 1st October to 31st December, inclusive, and from 1st January to 31st March, inclusive, in each and every year.

FENCING RESERVES
------------------

It has been suggested from time to time that the Government fence fauna and flora reserves.

The view has previously been taken that if flora and fauna reserves were fenced by the Government it would also have to accept responsibility for fencing all reserves, including National Parks and State Forests. The total of all reserved land has been said to be in excess of 80,000,000 acres and it will be readily seen that the fencing of fauna reserves would create a costly precedent.

This Department has pointed out -

- (a) that it is the responsibility of landholders to fence their land to stop their stock from straying;
- (b) most flora and fauna reserves abut alienated land that should have been fenced before the reserve was created;
- (c) a vermin proof fence erected by a landholder becomes an immediate taxation deduction, while the cost of a stock proof one may be spread over five years.

The Department has not fenced any fauna reserve outside the metropolitan area. The only fencing we have undertaken has been on the tortoise reserve where it was necessary to keep straying stock from trampling the limited habitat of this very rare species.

### FISHING

Mullet this month reached an all time high on the Metropolitan market, bringing 28 cents per pound.

Crayfish continued to be scarce and one fisherman made the comment recently at Head Office that there will be plenty of boats on the market next year.

Latest reports show that the crab situation in Mandurah is improving with increasing quantities of good size crabs being taken in shallow waters by waders with scoop nets.

## Staff Numbers Rise

Further to the report on staff numbers in the December Bulletin a further five new items have been created by the Public Service Commissioner for this Department during February.

A Chief Research Officer is to be appointed at the Waterman Marine Research Laboratory on the classification P-I-5.

The main functions of this officer will be to take charge of the new laboratories and the work being undertaken by the Department's fisheries research officers.

The decision to make application for the creation of this item came following a resolution passed by the Western Fisheries Research Committee which stated in brief that as the Director was unable to devote time for detailed supervision of research, a chief research officer be appointed to the Department of Fisheries and Fauna as soon as possible.

A Senior Research Officer will be appointed in the fauna branch on a P-II-9/11 classification and will be accommodated in the first instance at Koonwarra House in Adelaide Terrace.

The duties of the Senior Research Officer will be the restoration of the natural environment of native fauna, the protection and care of fauna, the propagation thereof and the promotion of the study of fauna.

To assist the Senior Research Officer in the fauna branch, a Grade I Technical Officer will be appointed on a classification of G-II-2/3. He will assist in survey work and undertake management action in accordance with the approved scheme of reserve management as recommended by the Western Australian Wild Life Authority.

Another Technical Officer will be appointed on a G-II-1/2 classification to assist with field surveys, collection of data, and analysis of the effects of commercial exploitation on Marsupial fauna.

Due to the growing number of staff members, an increased work load has been placed on the clerical staff at Head Office. To alleviate this congestion a relieving officer on a C-IV classification has been appointed. He will assist with licenses at the Fremantle office during January and February and will be fully occupied for the rest of the year filling in while Head Office staff are on annual recreation leave.

NEW RESERVES
--------------

MARVEL LOCH

A new granite rock reserve of about 513 acres has been created 12 miles west of Marvel Loch on Jilbadji location No. 29537. The reserve which is not vested has been set aside for the purpose of flora and fauna.

KONDININ

Approval has been obtained to set apart Roe location No. 2630 as Reserve No. 39533 for the purpose of "Conservation of Flora and Fauna". This reserve which is in the Shire of Kondinin is vested in the Western Australian Wild Life Authority. A notice to this effect was published in the Government Gazette dated December 13, 1968.

NEEDOONGA & CHITTERING LAKES

Swan location 8348 has been set aside as Reserve No. 29538 for the purpose of "Conservation of Fauna". Notice to this effect was published in the Government Gazette dated December 13, 1968.

PELICAN ISLAND - JOSEPH BONAPARTE GULF

Pelican Islet which is about 20 acres in size has been set apart as Reserve No. 29541 for the purpose of a "Wild Life Sanctuary". The reserve is vested in the Western Australian Wild Life Authority in trust for that purpose.

Notice to this effect has been published in the Government Gazette dated the 20th December, 1968.

*Staff Note*

Inspector Dereck Blackman has been assigned to a new marron patrol in the South-west Land Division. He is using his own car at the present time but a four wheel drive vehicle is on order.

\* \* \* \* \*

FINANCE, STORES AND INVENTORIES
---------------------------------

It must always be kept in mind that we live in a parliamentary democracy and that we are accountable for all our actions to parliament as the representative of the people. This includes how we spend the money allocated to our department and how we collect the money due to the department.

Managing a budget is made up of proposing what we want to spend, exercising control over what we have been given to spend, and reporting how we have spent it. The second mentioned aspect is the one we are mainly concerned with in our day to day activities. We aim to achieve our objectives with the greatest economy so that we will be able to make the most of our slice of the cake.

ACCOUNTING FOR PUBLIC MONEY:

- (1) A receipt must be issued for all money received.
- (2) Cheques must not be accepted except from drawer or payee.
- (3) Receipt or license number must be endorsed on the back of each cheque.
- (4) Your own or other people's private cheques must not be cashed.
- (5) Private money must not be mixed with public money.
- (6) Perquisites or gratuities must not be accepted for anything done in any official capacity.
- (7) Any public money held by you must be produced on demand when requested by an auditor.
- (8) When unused license forms or receipts are transferred from one officer to another, a transfer receipt must be obtained.

THE CONTROL OF SPENDING:

- (1) Permission to be supplied with goods or services must be obtained from the Clerk-in-Charge in the first instance.
- (2) This is done by forwarding outstation requisitions for standard items and memos for items of a special nature.

- (3) This should always be done after consultation with your immediate senior.
- (4) The Stores Clerk will either supply your requests direct or order through Government Stores.
- (5) If he supplies them direct he will send you an acknowledgement of receipt which you are required to sign and return.
- (6) If they are ordered through Government Stores you will receive a duplicate and triplicate of the Order issued. The duplicate must be signed by you when the goods have been received and returned to Government Stores. The triplicate is retained as your record.
- (7) No payment is made for goods until an acknowledgment of their receipt is obtained.
- (8) If any goods are returned to a supplier both Government Stores and Head Office must be notified.
- (9) Fuel and oil may be ordered by Direct Orders. The original is given to the supplier and the duplicate forwarded to Head Office immediately with a copy of of the invoice if available.
- (10) No payment is made by Head Office until the duplicate is received.
- (11) Direct orders may also be used for minor repairs or services to vehicles, after approval has been obtained.
- (12) Direct orders are occasionally used for urgent purchases but ONLY after PERMISSION has been obtained from HEAD OFFICE.
- (13) Stamps are advanced from Head Office to District Offices on a recoup system. Stamps used must be accounted for.
- (14) Petty expenditures incurred can be recouped from petty cash or claimed on monthly travelling claims. Receipts are required.

\* \* \* \* \*

The P.V. "Lancelin" has had a major overhaul on its engine and will be back in service shortly.

\* \* \* \* \*

## Staff Notes

Assistant Inspector Bruce is now on his own at Cervantes since Cadet Inspector Mill returned to Perth District Office on February 24.

\* \* \* \* \*

Jon Blackman is relieving at Mandurah while Cadet Inspector Cresswell is on Annual Recreation Leave.

\* \* \* \* \*

The "Pelsart" and "Dampier" will patrol the Abrolhos Islands under the direction of Senior Inspector Neil McLaughlan, during the Abrolhos cray season this year. In previous years inspectors were stationed on the islands.

