

NATURE RESERVE

RESERVE NO: 15895

GOVERNMENT GAZETTE
Date Page No.

FILE NUMBER: FWD 704/84

PURPOSE Conservation of Flora and Fauna

31/8/84

2778

NAME:

CLASS (Land Act):

AREA: 5 Ha

VESTING: Western Australian Wildlife
Authority and Shire

31/8/84

2778

LOCATION NO(S): Avon Location 20617

CLASSIFICATION:
(Wildlife Act
Section 12A)

LITHO: Plan Yelbeni 1:50 000

LOCAL AUTHORITY: Wyalkatchem

Notes:

NAMING OF RESERVES

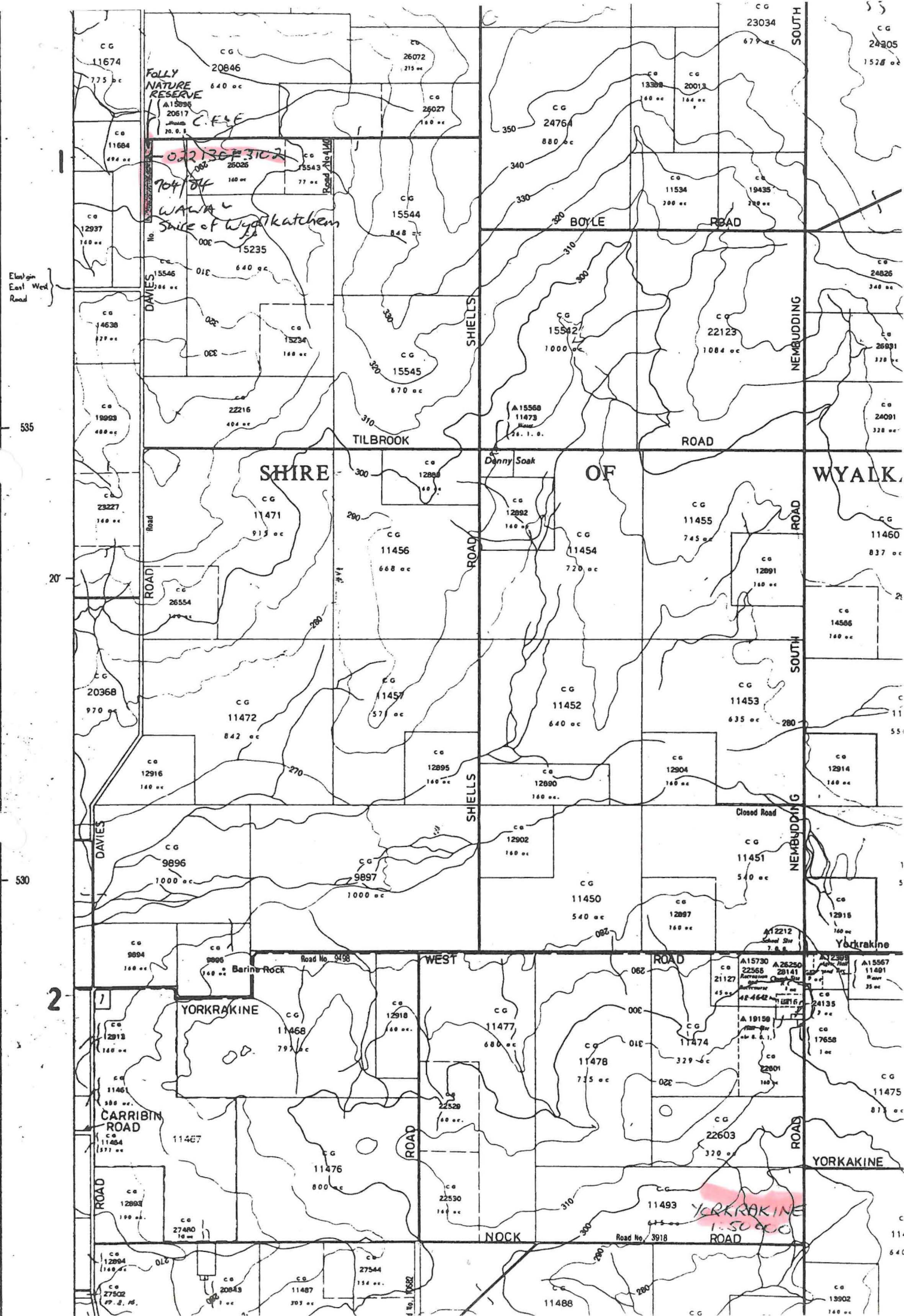
Department of Land Administration,
Perth, 19 December 1986.

Corres. No. 3583/981.

IT is hereby notified for general information that the Reserves listed in the Schedule hereunder are by this Notice, named in accordance with the said Schedule.

- Reserve No; Reserve Name; Public Plan
- 22262; Wundowlin Nature Reserve; Mukinbudin 1:50 000.
31715; Barbalin Nature Reserve; Mukinbudin 1:50 000.
13051; Calcaling Nature Reserve; Calcaling 1:50 000.
30705; South Wilgoyne Nature Reserve; Calcaling 1:50 000.
31629; Cookinbin Nature Reserve; Nungarin 1:50 000.
23835; Karloning Nature Reserve; Karloning 1:50 000.
29303; North Bonnie Rock Nature Reserve; Blain 1:50 000.
20530; Portion of Joverdine Nature Reserve; Bonnie Rock 1:50 000.
37034; Portion of Joverdine Nature Reserve; Bonnie Rock 1:50 000.
36526; Lake Cronin Nature Reserve; Lake Cronin 1:50 000.
A17186; Walyormouring Nature Reserve; Botherling S.W. & S.E.
A4313; Eaton Nature Reserve; Quelagetting 1:50 000.
14510; Hindmarsh Nature Reserve; Quelagetting 1:50 000.
A9228; Moonijin Nature Reserve; Cadoux S.E.
15794; Cullimbina Nature Reserve; Cadoux N.E.
10991; Carrimbin Rock Nature Reserve; 33/80.
21719; Wallambin Nature Reserve; Yelbeni 1:50 000.
10992; Elashgin Nature Reserve; Bulagin 1:50 000.
23887; Wyalkatchem Nature Reserve; Wyalkatchem 1:10 000 5.6 & 5.7.
34385; Nembudding Nature Reserve; Yelbeni 1:50 000.
15386; Yelbeni Nature Reserve; Yelbeni Townsite.
35413; Walcancobbing Nature Reserve; Trayning 1:50 000.
15570; East Wallambin Nature Reserve; Lake Wallambin S.E.
20986; Marindo Nature Reserve; Beacon 1:50 000.
22457; North Beacon Nature Reserve; Beacon 1:50 000.
26911; Beebeegnying Nature Reserve; Gabbing 1:50 000.
17923; Mungarri Nature Reserve; Beacon 1:50 000.
24539; Herdermuning Nature Reserve; Beacon 1:50 000.
35679; Danjinning Nature Reserve; Karloning 1:50 000.
12689; Wiacubbing Nature Reserve; Bencubin 1:50 000.
26687; North Wallambin Nature Reserve; Lake Wallambin S.E.
24789; Lake Champion Nature Reserve; 35/80.
23339; Elachbutting Nature Reserve; 67/80.
23338; Geeraning Nature Reserve; 67/80.
16235; Carrabin Nature Reserve; Carrabin Townsite.
1431; Baladjie Nature Reserve; 53/80, 54/80.
A35732; Walyahmoning Nature Reserve; Waroona Townsite.
24465; Yanneymooning Nature Reserve; 54/80.
25194; Anderson Lake Nature Reserve; Toolbrunup S.E.
26162; Three Swamps Nature Reserve; Toolbrunup S.E.
30526; East Balicup Nature Reserve; Toolbrunup S.W.
26381; McDougall Nature Reserve; Merilup S.E.
9237; Portion of Snake Gully Nature Reserve; 88/80, 89/80.
10351; Portion of Snake Gully Nature Reserve; 88/80, 89/80.
36448; Portion of Snake Gully Nature Reserve; 89/80.
27283; Goodlands Nature Reserve; Kalannie 1:50 000.
26259; Carlyarn Nature Reserve; Karrakutta 1:50 000.
18381; Sawyers Nature Reserve; Kalannie 1:50 000.
19650; Old Store Nature Reserve; Kalannie 1:50 000.
33803; Milyu Nature Reserve; Perth 1:2 000 12.21, 12.22, 13.21, 13.22.
16867; Dukin Nature Reserve; Koorda S.E.
24838; Walk Walkin Nature Reserve; Koorda S.W.
9281; Portion of Warramuggan Nature Reserve; Koorda S.E.
16040; Portion of Warramuggan Nature Reserve; Koorda S.E.
4670; Nembudding South Nature Reserve; Yelbeni S.W.
12398; Lake Mears Nature Reserve; Quairading S.W.
36063; Strange Road Nature Reserve; Luptons S.W., S.E.
19740; Bartram Nature Reserve; Luptons S.E.
36519; Pingeculling Nature Reserve; Brookton S.W.
36742; Brookton Highway Nature Reserve; Luptons S.E.
8830; Bulgin Nature Reserve; Cunderdin 1:50 000.
10313; Noonying Nature Reserve; 26C/40.
23566; Tammin Nature Reserve; 26C/40.
17732; North Bungulla Nature Reserve; Kellerberrin 1:50 000.
4667; Lundy Nature Reserve; 26B/40.
24831; Wyola Nature Reserve; 26C/40.
28289; Moulien Nature Reserve; 3B/40.
33990; Bungulla Nature Reserve; Bungulla Townsite.
21153; Morranoppin Nature Reserve; Doodlakine 1:50 000.
22921; Durokoppin Nature Reserve; Kodjikooin 1:50 000.
12329; North Bandee Nature Reserve; Kodjikooin 1:50 000.
24897; Mournucking Nature Reserve; Kellerberrin 1:50 000.
25112; Portion of Glenluce Nature Reserve; Pantapin 1:50 000.
26266; Portion of Glenluce Nature Reserve; Pantapin 1:50 000.
30903; Craig Nature Reserve; Pantapin 1:50 000.
5456; Dead Mans Swamp Nature Reserve; Hillman S.E. Moodiarup N.E.
25904; Boolading Nature Reserve; Boolading Townsite.
16904; Hillman Nature Reserve; Hillman N.W.
21521; Williams Nature Reserve; Williams N.E.
29313; Borgey Nature Reserve; Highbury N.W. Williams N.E.
32448; Moorapulling Nature Reserve; Dwarda S.W.
30563; Moomagul Nature Reserve; Dattening N.W.
19784; Haddleton Springs Nature Reserve; Blackwood River N.W., S.W.
29322; Weam Nature Reserve; Brookton S.W., N.W.
31913; Haddleton Nature Reserve; Blackwood River N.W., N.E.
13373; Benjabbering Nature Reserve; Benjabbering Townsite.
15895; Folly Nature Reserve; Yorkrakine 1:50 000.
14920; Dingo Well Nature Reserve; Wyalkatchem 1:50 000.
13242; Gabwotting Nature Reserve; Wyalkatchem 1:50 000.
A23756; Portion of Kooljerrenup Nature Reserve; Lake Clifton N.E.
36126; Portion of Kooljerrenup Nature Reserve; Lake Clifton N.E.
B4990; Portion of Austin Bay Nature Reserve; Mandurah 1:10 000, 2.7.
B24036; Portion of Austin Bay Nature Reserve; Pinjarra N.W.
28087; Portion of Austin Bay Nature Reserve; Mandurah S.E., N.E. Pinjarra S.W., N.W.
24739; McLarty Nature Reserve; Mandurah 1:10 000, 1.5.
33749; Boodalan Nature Reserve; Mandurah 1:10 000, 2.7.
16907; Nine Mile Lake Nature Reserve; Pinjarra S.W.
22199; Buller Nature Reserve; Hamel N.W., S.W.
12049; Harvey Flats Nature Reserve; Hamel S.W.
12632; Riverdale Nature Reserve; Hamel S.W.
24472; Crampton Nature Reserve; Lake Preston N.E., N.W.
22797; Falls Brook Nature Reserve; Harvey N.E. Tallanalla N.W.
34811; Benger Swamp Nature Reserve; Harvey S.W.
1740; Wild Horse Swamp Nature Reserve; Blackwood River S.E.
24917; Towering Nature Reserve; Moddiarup N.W.
30668; Arthur River Nature Reserve; East Arthur N.W. Hillman N.E.
7349; Jandabup Nature Reserve; Swan 1:10 000, 3.2.
A31048; Portion of Lake Joondalup Nature Reserve; Swan 1:10 000, 2.2.
A21708; Portion of Lake Joondalup Nature Reserve; Swan 1:10 000, 2.2.
30809; Woodvale Nature Reserve; Swan 1:2 000, 8.03, 8.04, 9.04.
25919; Copley Dale Nature Reserve; Swan 1:10 000, 6.3.
30667; Beechina Nature Reserve; 3B/40.

56
 & Reserves *MC* 2 hands Clerk.
 Please ensure that title of list is correct
 DONE AND. 26.7.88



FOLLY NATURE RESERVE
A15095
20617
70.0.1
C.F.E

~~03213673102~~

704/84
WALK
SHIRE of Wyalkatchem

SHIRE

OF

WYALK

YORKAKINE

CARRIBIN ROAD

NOCK ROAD

YORKAKINE
1.50000

YORKAKINE

2

55
CG
24305
1578 ac

23034
677 ac

CG
11674
775 ac

CG
20846
640 ac

CG
26072
215 ac

CG
24764
880 ac

CG
13388
160 ac

CG
20013
164 ac

CG
11684
494 ac

CG
12937
180 ac

CG
14638
177 ac

CG
19993
488 ac

CG
23227
160 ac

CG
20368
970 ac

CG
12916
160 ac

CG
9896
1000 ac

CG
9894
160 ac

CG
12913
160 ac

CG
11461
580 ac

CG
11467
11467 ac

CG
12992
100 ac

CG
27480
10 ac

CG
12994
100 ac

CG
27502
10 ac

CG
11487
307 ac

CG
20843
1 ac

CG
11487
307 ac

CG
27544
154 ac

CG
11488
11488 ac

CG
13902
160 ac

CG
25025
160 ac

CG
75543
77 ac

CG
15544
848 ac

CG
15235
640 ac

CG
15234
168 ac

CG
22216
404 ac

CG
11471
913 ac

CG
26554
160 ac

CG
11472
842 ac

CG
12916
160 ac

CG
9896
1000 ac

CG
9894
160 ac

CG
12913
160 ac

CG
11461
580 ac

CG
11467
11467 ac

CG
12992
100 ac

CG
27480
10 ac

CG
12994
100 ac

CG
27502
10 ac

CG
11487
307 ac

CG
20843
1 ac

CG
11487
307 ac

CG
25025
160 ac

CG
75543
77 ac

CG
15544
848 ac

CG
15235
640 ac

CG
15234
168 ac

CG
22216
404 ac

CG
11471
913 ac

CG
26554
160 ac

CG
11472
842 ac

CG
12916
160 ac

CG
9896
1000 ac

CG
9894
160 ac

CG
12913
160 ac

CG
11461
580 ac

CG
11467
11467 ac

CG
12992
100 ac

CG
27480
10 ac

CG
12994
100 ac

CG
27502
10 ac

CG
11487
307 ac

CG
20843
1 ac

CG
11487
307 ac

CG
25025
160 ac

CG
75543
77 ac

CG
15544
848 ac

CG
15235
640 ac

CG
15234
168 ac

CG
22216
404 ac

CG
11471
913 ac

CG
26554
160 ac

CG
11472
842 ac

CG
12916
160 ac

CG
9896
1000 ac

CG
9894
160 ac

CG
12913
160 ac

CG
11461
580 ac

CG
11467
11467 ac

CG
12992
100 ac

CG
27480
10 ac

CG
12994
100 ac

CG
27502
10 ac

CG
11487
307 ac

CG
20843
1 ac

CG
11487
307 ac

CG
25025
160 ac

CG
75543
77 ac

CG
15544
848 ac

CG
15235
640 ac

CG
15234
168 ac

CG
22216
404 ac

CG
11471
913 ac

CG
26554
160 ac

CG
11472
842 ac

CG
12916
160 ac

CG
9896
1000 ac

CG
9894
160 ac

CG
12913
160 ac

CG
11461
580 ac

CG
11467
11467 ac

CG
12992
100 ac

CG
27480
10 ac

CG
12994
100 ac

CG
27502
10 ac

CG
11487
307 ac

CG
20843
1 ac

CG
11487
307 ac

CG
25025
160 ac

CG
75543
77 ac

CG
15544
848 ac

CG
15235
640 ac

CG
15234
168 ac

CG
22216
404 ac

CG
11471
913 ac

CG
26554
160 ac

CG
11472
842 ac

CG
12916
160 ac

CG
9896
1000 ac

CG
9894
160 ac

CG
12913
160 ac

CG
11461
580 ac

CG
11467
11467 ac

CG
12992
100 ac

CG
27480
10 ac

CG
12994
100 ac

CG
27502
10 ac

CG
11487
307 ac

CG
20843
1 ac

CG
11487
307 ac

CG
25025
160 ac

CG
75543
77 ac

CG
15544
848 ac

CG
15235
640 ac

CG
15234
168 ac

CG
22216
404 ac

CG
11471
913 ac

CG
26554
160 ac

CG
11472
842 ac

CG
12916
160 ac

CG
9896
1000 ac

CG
9894
160 ac

CG
12913
160 ac

CG
11461
580 ac

CG
11467
11467 ac

CG
12992
100 ac

CG
27480
10 ac

CG
12994
100 ac

CG
27502
10 ac

CG
11487
307 ac

CG
20843
1 ac

CG
11487
307 ac

CG
25025
160 ac

CG
75543
77 ac

CG
15544
848 ac

CG
15235
640 ac

CG
15234
168 ac

CG
22216
404 ac

CG
11471
913 ac

CG
26554
160 ac

CG
11472
842 ac

CG
12916
160 ac

CG
9896
1000 ac

CG
9894
160 ac

CG
12913
160 ac

CG
11461
580 ac

CG
11467
11467 ac

CG
12992
100 ac

CG
27480
10 ac

CG
12994
100 ac

CG
27502
10 ac

CG
11487
307 ac

CG
20843
1 ac

CG
11487
307 ac

CG
25025
160 ac

CG
75543
77 ac

CG
15544
848 ac

CG
15235
640 ac

CG
15234
168 ac

CG
22216
404 ac

CG
11471
913 ac

CG
26554
160 ac

CG
11472
842 ac

CG
12916
160 ac

CG
9896
1000 ac

CG
9894
160 ac

CG
12913
160 ac

CG
11461
580 ac

CG
11467
11467 ac

CG
12992
100 ac

CG
27480
10 ac

CG
12994
100 ac

CG
27502
10 ac

CG
11487
307 ac

CG
20843
1 ac

CG
11487
307 ac

CG
25025
160 ac

CG
75543
77 ac

CG
15544
848 ac

CG
15235
640 ac

CG
15234
168 ac

CG
22216
404 ac

CG
11471
913 ac

CG
26554
160 ac

CG
11472
842 ac

CG
12916
160 ac

CG
9896
1000 ac

CG
9894
160 ac

CG
12913
160 ac

CG
11461
580 ac

CG
11467
11467 ac

CG
12992
100 ac

CG
27480
10 ac

CG
12994
100 ac

CG
27502
10 ac

CG
11487
307 ac

CG
20843
1 ac

CG
11487
307 ac

CG
25025
160 ac

CG
75543
77 ac

CG
15544
848 ac

CG
15235
640 ac

CG
15234
168 ac

CG
22216
404 ac

CG
11471
913 ac

CG
26554
160 ac

CG
11472
842 ac

CG
12916
160 ac

CG
9896
1000 ac

CG
9894
160 ac

CG
12913
160 ac

CG
11461
580 ac

CG
11467
11467 ac

</