

NATURE RESERVE

RESERVE NO: 18583

GOVERNMENT GAZETTE
Date Page No.

FILE NUMBER:

PURPOSE: Cons. of Flora & Fauna 11.8.78 2885

NAME:

CLASS (Land Act):

AREA: 1155.9871 ha

VESTING: W.A.W.A. 11.8.78 2864

LOCATION NO(S): Yilgarn 267

CLASSIFICATION:
(Wildlife Act
Section 12A)

LITHO: 24/80, 35/80

LOCAL AUTHORITY: WESTONIA SHIRE

Notes:

RESERVE ACTION SHEET - CONSERVATION RESERVES

RESERVE No. 18583

REASON FOR ACTION

- Amendment to reserve 18583 to include a portion of discontinued railway. Area of reserve reduced by 97.3 hectares due to a recalculation of location boundaries. Area: 1058.7 hectares.

The discontinued railway, despite being predominantly cleared with limited regeneration of native vegetation, was included into reserve 18583 as the railway is relatively narrow and surrounded by the reserve. Gaining management of the railway also aids in the Department's capacity to control the illegal harvesting of timber for digeridoos, which occurs in the surrounding native vegetation.

- Date of DOLA's advice: 4 October 2000 See folio: 64
- Plans at folios: 61, 62 & 63

OFFICER	ACTION
<p>1 CONSERVATION ESTATE OFFICER ^{LS}</p>	<ul style="list-style-type: none"> - Fill in above details ✓ - Attach copies of DOLA's advice to file ✓ <p>Send copies of advice & maps to:</p> <ul style="list-style-type: none"> - Lisa Wright, Woodvale ✓ - District Manager, Merredin ✓ - Regional Manager, Wheatbelt ✓ <p>Recommended IUCN classification: 1a</p> <p>To note: <i>LS</i></p>
<p>2 INDEX CLERK, RECORDS</p>	<p>To note: _____</p>
<p>3 LAND ACQUISITIONS OFFICER</p>	<p>To note: _____</p>
<p>4 MANAGER, PLANNING & VISITOR SERVICES</p>	<p>To note & approve IUCN classification: _____</p>
<p>5 DIRECTOR, NATURE CONSERVATION/ NATIONAL PARKS</p>	<p>To note: _____</p>

RESERVE ACTION SHEET: CONSERVATION RESERVES

RESERVE No. 18583

LOCAL GOVERNMENT: Shire of Westonia

NAME: 'Unnamed nature reserve'

PURPOSE: Conservation of flora and fauna

VESTING: Conservation and Parks Commission

ACTION: Excision of 15.02 hectares from Reserve 18583 and the creation of Lots 543-547 on Deposited Plan 416529.

Total Area: From 1058.6855ha to 1043.6652ha

REASON FOR ACTION:

Main Roads Western Australia required an excision from Reserve 18583 for widening/realignment Great Eastern Highway.

Date of amendment: 18/03/2021

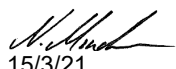
Maps: attached

Customer advice: attached

Proposal Summary: attached

IUCN classification: 1a

Native Title: Marlinyu Ghoorlie (registered)

1	LAND UNIT LEADER	To note	 15/3/21
2	LAND UNIT	Send scan of RAS, customer advice, Reserve Enquiry Detail and maps to:	
		• Lisa Wright (Kensington) DIGITAL COPY	SH 15/3/22
		• District Manager DIGITAL COPY	SH 15/3/22
		• Regional Manager DIGITAL COPY	SH 15/3/22
		• Geoffrey Banks GIS Branch DIGITAL COPY	SH 15/3/22
		Attach Landgate RDR to file	SH 15/3/22
		Strikethrough from District Proposals spreadsheets	Not present
		Create Conservation Commission summary	SH 15/3/22
	TENIS amended	AG 15/3/21	
3	EXECUTIVE DIRECTOR, PARKS AND VISITOR SERVICES	To note	SH 15/3/22

Customer Advice

Customer Advices for Reserve Actions 1/12/2000 - 31/12/2000

Shire of Westonia 1/12/2000 - 31/12/2000

Reserve No.	Land Description	DOLA File No.	Volume/Folio	Action	Document No.	Registered	Street Name	Area	Public Plans
18583	Yilgarn Location 267	03382-1988-01RO	0000-000	Amendment of Reserve to To comprise Yilgarn Location 267 on Land Administration Miscellaneous Plan 21187 and of its area being reduced to 1058.6855 hectares accordingly	H566554	04/10/2000	near Yerbillon	1058.6855 Ha	Westonia (50)
18583		03382-1988-01RO	0000-000	Revocation of Management Order (WA Wildlife Authority) for the designated purpose of "Conservation of Flora & Fauna".	H566553	04/10/2000	near Yerbillon	1155.9871 Ha	Westonia (50)
32162	Westonia Lots 42, 43, 44, 45 and 46 on Land Administration Plan 3296	01231-1973-01RO	3074-838	Amendment of Reserve to To include the section of closed road being Westonia Lot 430 and for Reserve 32162 to comprise Westonia Lot 431 on Land Administration Diagram 93624, formerly Lots 42, 43, 44, 45 and 46, and of its area being increased to 6677 square metres accordingly .	H522913	11/08/2000	Diorite Street	6677 sqm	Westonia Townsite
32162		01231-1973-01RO	3110-956	Management Order to Shire of Westonia of Wolfram Street Westonia for the designated purpose of "Recreation"	H522916	11/08/2000	Diorite Street	6677 sqm	Westonia Townsite
32162		01231-1973-01RO	3074-838	Revocation of Management Order (the Shire of Westonia) for the designated purpose of "Recreation".	H522915	11/08/2000	Diorite Street	5060 sqm	Westonia Townsite

John 820

For plans please

Thanks

Sharon Colliss

30.11.01

Tens d'ave awarded (50)

Plan, white folder checked OK 9/12

**Customer Advices for Reserve Actions
1/05/2021 - 31/05/2021**

Shire of Westonia 1/05/2021 - 31/05/2021

Reserve No.	Land Description	DPLH File No.	Volume/Folio	Action	Document No.	Registered	Street Name	Area	Public Plans
14017	Lot 1 on Deposited Plan 222242 Lot 6 on Deposited Plan 222242	06882-1911	3021-755 3021-755	Amendment of Reserve to include Lots 101 and 106 on Deposited Plan 413019 in lieu of Lots 1 and 6 on Deposited Plan 222242 and its area being reduced to 0.4535 hectares, accordingly.	O674506	18/03/2021	Ayliffe Street, Carrabin	0.4537 Ha	BL36 (2.5) 16.05
14017	Lot 65 on Deposited Plan 90119	06882-1911	3021-755	Amendment of Reserve to include Lot 165 on Deposited Plan 415998 in lieu of Lot 65 on Deposited Plan 90119 and its area being reduced to 0.4326 hectares, accordingly.	O674517	18/03/2021	Ayliffe Street, Carrabin	0.4328 Ha	BL36 (2.5) 16.05
14034	Lot 73 on Deposited Plan 222242	01919-1912	3172-993	Amendment of Reserve to now comprise Lot 173 on Deposited Plan 415998 in lieu of Carrabin Lot 73 on Deposited Plan 222242 and its area being reduced to 6.3014 hectares, accordingly.	O674519	18/03/2021	York Road, Carrabin	6.3014 Ha	BL36 (2.5) 16.05
18583	Lot 267 on Deposited Plan 221187	03382-1988	3028-846	Amendment of Reserve to now comprise Lots 543 - 547 on Deposited Plan 416529 in lieu of Lot 267 on Deposited Plan 221187 and its area being reduced to 1043.6652 hectares, accordingly.	O674509	18/03/2021	Great Eastern Highway, Carrabin	1043.6652 Ha	Westonia (50)
45634	Lot 74 on Deposited Plan 193693	03253-1978	3111-125	Amendment of Reserve to now comprise Lot 174 on Deposited Plan 415598 in lieu of Lot 74 on Deposited Plan 193693 and its area being reduced to 0.4285 hectares, accordingly.	O674518	18/03/2021	York Road, Carrabin	0.4285 Ha	BL36 (2.5) 16.05

Reserve Details Report -18583

Reserve	18583	Legal Area (ha)	1043.6652
Name	N/A	Status	CURRENT
Type	N/A	Current Purpose	CONSERVATION OF FLORA & FAUNA
File Number	03382-1988-01RO		
Notes	N/A		
Additional Reserve Information	RESERVE COMPRISES LOTS 543, 544, 545, 546 & 547 ON DP416529 (O674509)		

Class	Responsible Agency	Date of Last Change
C	DEPARTMENT OF BIODIVERSITY, CONSERVATION AND ATTRACTIONS (SCLM)	30/04/2021

Management Order	Document Number
VEST CONSERVATION AND PARKS COMMISSION	O674510

Land Use
FAUNA
PROTECTION OF FLORA
CONSERVATION

Local Government Authority
SHIRE OF WESTONIA

CLT Number	Parcel Identifier	Street Address, Suburb	File Number	PIN	Area (m ²)
LR3173/6	Lot 543 On Deposited Plan 416529	No Street Address Information Available	03382-1988-01RO	12384817	6322640
LR3173/7	Lot 544 On Deposited Plan 416529	No Street Address Information Available	03382-1988-01RO	12384815	1022822
LR3173/8	Lot 545 On Deposited Plan 416529	No Street Address Information Available	03382-1988-01RO	12384811	667540
LR3173/9	Lot 546 On Deposited Plan 416529	No Street Address Information Available	03382-1988-01RO	12384814	850945
LR3173/10	Lot 547 On Deposited Plan 416529	No Street Address Information Available	03382-1988-01RO	12384818	1572705

Previous Certificates of Title	Status
--------------------------------	--------

Document Number/Gazette Page	Date	Type	Text
O674507	18/03/2021	Vesting Revoked	REVOKED
O674509	18/03/2021	Current Area	1043.6652
O674510	18/03/2021	Current Vesting	VEST CONSERVATION AND PARKS COMMISSION
H607287	27/11/2000	Historical Vesting	VEST: NATIONAL PARKS AND NATURE CONSERVATION AUTHORITY
H566553	04/10/2000	Vesting Revoked	REVOKED ORDER DATED 11.08.1978
H566554	04/10/2000	Historical Area	1058.6855
H566554	04/10/2000	Survey Number	LTO: MISC PLAN 21187
N/A	04/10/2000	Correspondence File Number	03382-1988-01RO
N/A	29/12/1987	Public Plan	WESTONIA (50)
2864	11/08/1978	Historical Vesting	VEST W A WILDLIFE AUTHORITY
2885	11/08/1978	Current Purpose	CONSERVATION OF FLORA & FAUNA
576	04/04/1924	Class	C
576	04/04/1924	Original Gazettal and page	ORIGINAL GAZETTE
N/A	04/04/1924	Historical Area	ABT2885.0.0
N/A	04/04/1924	Location	YILGARN LOCATION 267
N/A	04/04/1924	Street Name	NR.YERBILLON
N/A	N/A	Historical Purposes	TIMBER
N/A	N/A	Area Reduced by	1155.9871 BY STANDARD GAUGE RAILWAY,P86

date: Mar 2, 2022, 4:05:58 PM

ers1 -----

CROWN RESERVES SYSTEM

----- RESCERS1

15:05:08

RESERVES INDEX ENQUIRY

22 JAN 01

COMMAND ==>

CLR-NO LR 3028/846 - ISSUED

Reserve : 18583 (Status : 0) Class : C (04/04/1924 pp 576)
 Orig Gaz : 576 of 04/04/1924 Area : 1058.6855
 Coded Information : (to translate VESTING, RESP AGENCY and LGA = Press PF05)
 Vesting : 15NPN : Resp. Agency : SCLM
 Usage : 9100 : 9200 : 9300 : : 1858 :
 L.G. Auth: 428 : : : : : (Last Change: 27/11/2000)

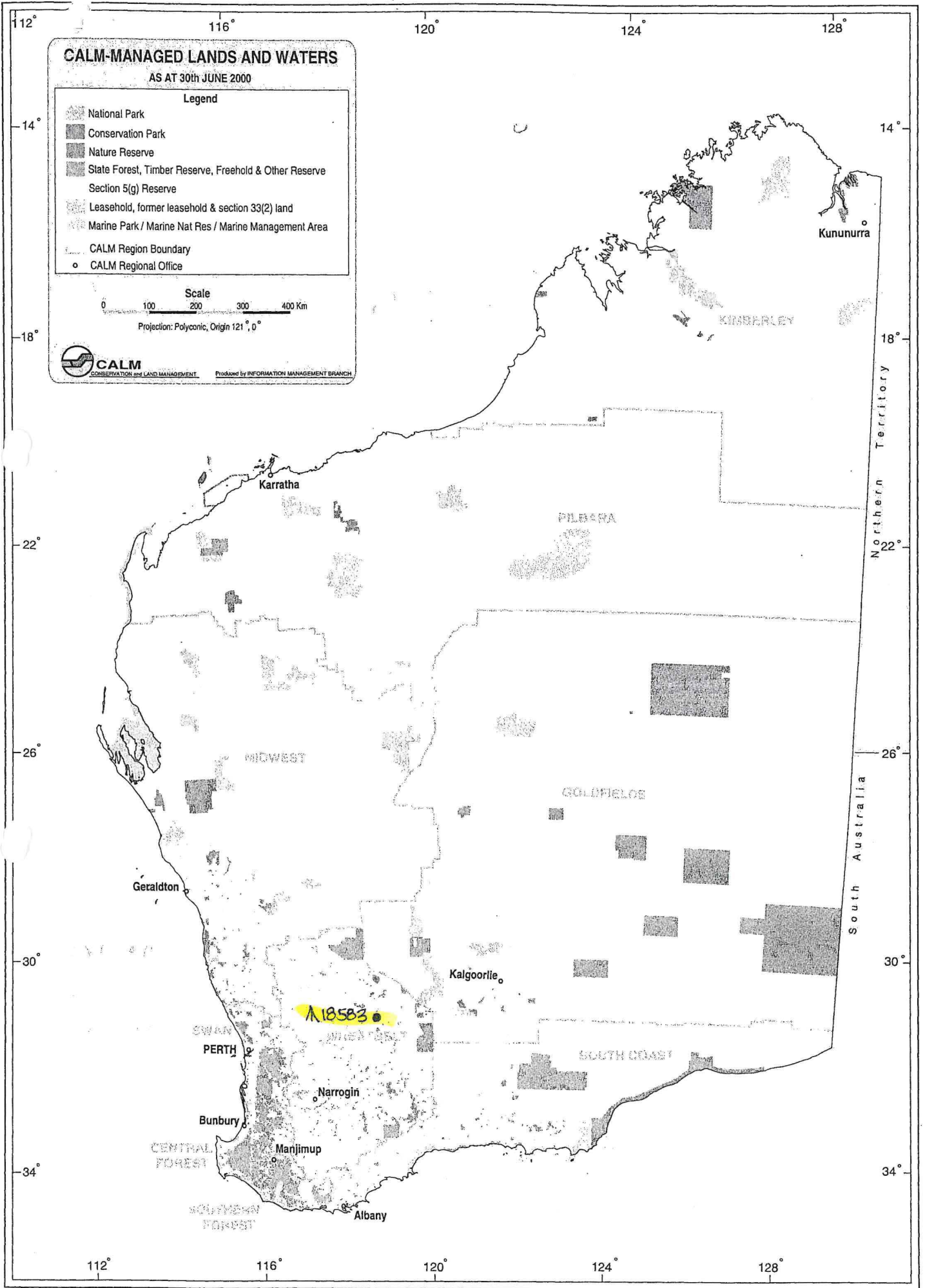
Gaz-Page and Date.

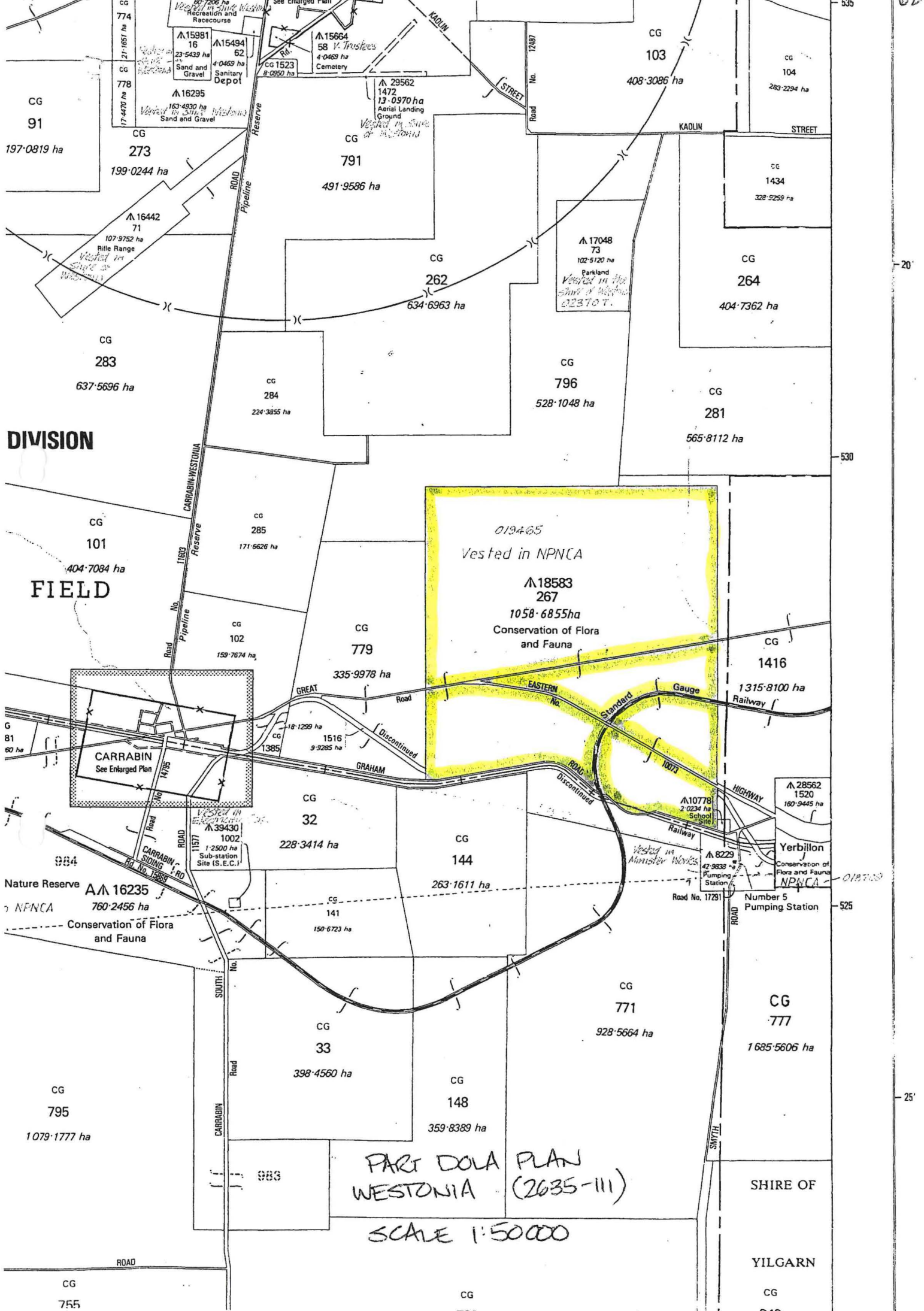
Text Details

	04/10/2000	1	CA	1058.6855 (H566554)
2885	11/08/1978	1	CP	CONSERVATION OF FLORA & FAUNA
	04/10/2000	1	CV	VEST: NATIONAL PARKS AND NATURE CONSERVATION
	PLUS	2	CV	AUTHORITY (H607287)
	04/10/2000	1	FN	03382-1988-01RD
	04/04/1924	1	LC	YILGARN LOCATION 267
	29/12/1987	1	PP	WESTONIA (50)
	04/04/1924	1	ST	NR.YERBILLON
	04/10/2000	1	SV	LTD: MISC PLAN 21187 (H566554)

----- ADDITIONAL INFORMATION (NEWEST FIRST) -----

PFkeys: 1 = Help 3 = End 4 = Main Menu 5 = Translate Codes 6 = Map Details
 7 = Bkwd 8 = Fwd 9 = Print 10 = Cal List 11 = Graphics 12 = Command Line



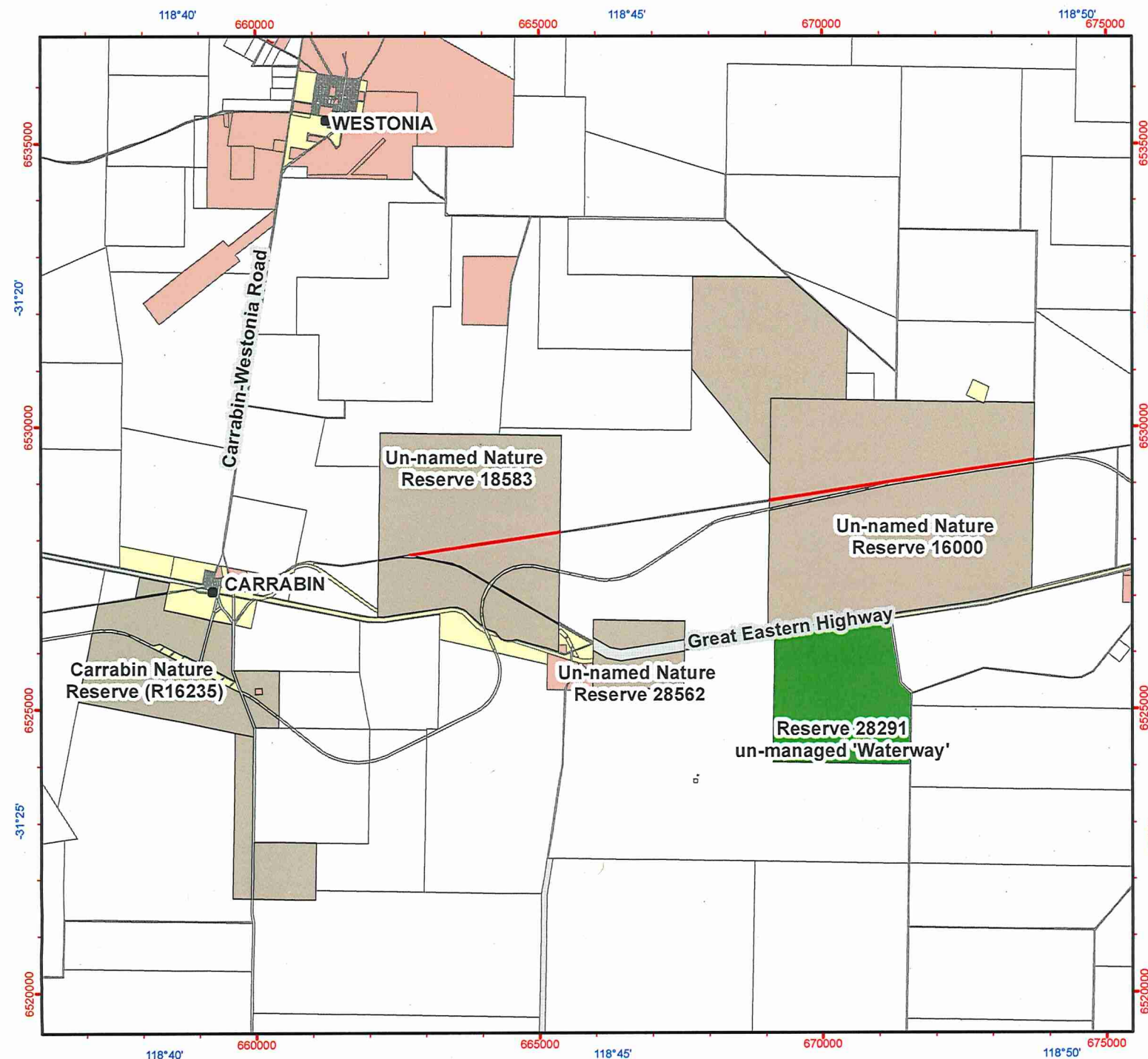


DIVISION
FIELD

**PART DOLA PLAN
WESTONIA (2635-111)**
SCALE 1:50000

**SHIRE OF
YILGARN**

CG 91 197-0819 ha
CG 273 199-0244 ha
CG 283 637-5696 ha
CG 101 404-7094 ha
CG 102 159-7674 ha
CG 103 408-3086 ha
CG 104 283-2294 ha
CG 1434 328-5259 ha
CG 264 404-7362 ha
CG 262 634-6963 ha
CG 284 224-3855 ha
CG 285 171-6626 ha
CG 279 335-9978 ha
CG 32 228-3414 ha
CG 141 150-6723 ha
CG 148 359-8389 ha
CG 771 928-5664 ha
CG 777 1685-5606 ha
CG 795 1079-1777 ha
CG 796 528-1048 ha
CG 799 1058-6855 ha
CG 829 42-9838 ha
CG 833 398-4560 ha
CG 834 107-9752 ha
CG 835 18-1299 ha
CG 836 9-9285 ha
CG 837 1-2500 ha
CG 838 1516-9-9285 ha
CG 839 1002-1-2500 ha
CG 840 11517-1-2500 ha
CG 841 1002-1-2500 ha
CG 842 11517-1-2500 ha
CG 843 1002-1-2500 ha
CG 844 11517-1-2500 ha
CG 845 1002-1-2500 ha
CG 846 11517-1-2500 ha
CG 847 1002-1-2500 ha
CG 848 11517-1-2500 ha
CG 849 1002-1-2500 ha
CG 850 11517-1-2500 ha
CG 851 1002-1-2500 ha
CG 852 11517-1-2500 ha
CG 853 1002-1-2500 ha
CG 854 11517-1-2500 ha
CG 855 1002-1-2500 ha
CG 856 11517-1-2500 ha
CG 857 1002-1-2500 ha
CG 858 11517-1-2500 ha
CG 859 1002-1-2500 ha
CG 860 11517-1-2500 ha
CG 861 1002-1-2500 ha
CG 862 11517-1-2500 ha
CG 863 1002-1-2500 ha
CG 864 11517-1-2500 ha
CG 865 1002-1-2500 ha
CG 866 11517-1-2500 ha
CG 867 1002-1-2500 ha
CG 868 11517-1-2500 ha
CG 869 1002-1-2500 ha
CG 870 11517-1-2500 ha
CG 871 1002-1-2500 ha
CG 872 11517-1-2500 ha
CG 873 1002-1-2500 ha
CG 874 11517-1-2500 ha
CG 875 1002-1-2500 ha
CG 876 11517-1-2500 ha
CG 877 1002-1-2500 ha
CG 878 11517-1-2500 ha
CG 879 1002-1-2500 ha
CG 880 11517-1-2500 ha
CG 881 1002-1-2500 ha
CG 882 11517-1-2500 ha
CG 883 1002-1-2500 ha
CG 884 11517-1-2500 ha
CG 885 1002-1-2500 ha
CG 886 11517-1-2500 ha
CG 887 1002-1-2500 ha
CG 888 11517-1-2500 ha
CG 889 1002-1-2500 ha
CG 890 11517-1-2500 ha
CG 891 1002-1-2500 ha
CG 892 11517-1-2500 ha
CG 893 1002-1-2500 ha
CG 894 11517-1-2500 ha
CG 895 1002-1-2500 ha
CG 896 11517-1-2500 ha
CG 897 1002-1-2500 ha
CG 898 11517-1-2500 ha
CG 899 1002-1-2500 ha
CG 900 11517-1-2500 ha
CG 901 1002-1-2500 ha
CG 902 11517-1-2500 ha
CG 903 1002-1-2500 ha
CG 904 11517-1-2500 ha
CG 905 1002-1-2500 ha
CG 906 11517-1-2500 ha
CG 907 1002-1-2500 ha
CG 908 11517-1-2500 ha
CG 909 1002-1-2500 ha
CG 910 11517-1-2500 ha
CG 911 1002-1-2500 ha
CG 912 11517-1-2500 ha
CG 913 1002-1-2500 ha
CG 914 11517-1-2500 ha
CG 915 1002-1-2500 ha
CG 916 11517-1-2500 ha
CG 917 1002-1-2500 ha
CG 918 11517-1-2500 ha
CG 919 1002-1-2500 ha
CG 920 11517-1-2500 ha
CG 921 1002-1-2500 ha
CG 922 11517-1-2500 ha
CG 923 1002-1-2500 ha
CG 924 11517-1-2500 ha
CG 925 1002-1-2500 ha
CG 926 11517-1-2500 ha
CG 927 1002-1-2500 ha
CG 928 11517-1-2500 ha
CG 929 1002-1-2500 ha
CG 930 11517-1-2500 ha
CG 931 1002-1-2500 ha
CG 932 11517-1-2500 ha
CG 933 1002-1-2500 ha
CG 934 11517-1-2500 ha
CG 935 1002-1-2500 ha
CG 936 11517-1-2500 ha
CG 937 1002-1-2500 ha
CG 938 11517-1-2500 ha
CG 939 1002-1-2500 ha
CG 940 11517-1-2500 ha
CG 941 1002-1-2500 ha
CG 942 11517-1-2500 ha
CG 943 1002-1-2500 ha
CG 944 11517-1-2500 ha
CG 945 1002-1-2500 ha
CG 946 11517-1-2500 ha
CG 947 1002-1-2500 ha
CG 948 11517-1-2500 ha
CG 949 1002-1-2500 ha
CG 950 11517-1-2500 ha
CG 951 1002-1-2500 ha
CG 952 11517-1-2500 ha
CG 953 1002-1-2500 ha
CG 954 11517-1-2500 ha
CG 955 1002-1-2500 ha
CG 956 11517-1-2500 ha
CG 957 1002-1-2500 ha
CG 958 11517-1-2500 ha
CG 959 1002-1-2500 ha
CG 960 11517-1-2500 ha
CG 961 1002-1-2500 ha
CG 962 11517-1-2500 ha
CG 963 1002-1-2500 ha
CG 964 11517-1-2500 ha
CG 965 1002-1-2500 ha
CG 966 11517-1-2500 ha
CG 967 1002-1-2500 ha
CG 968 11517-1-2500 ha
CG 969 1002-1-2500 ha
CG 970 11517-1-2500 ha
CG 971 1002-1-2500 ha
CG 972 11517-1-2500 ha
CG 973 1002-1-2500 ha
CG 974 11517-1-2500 ha
CG 975 1002-1-2500 ha
CG 976 11517-1-2500 ha
CG 977 1002-1-2500 ha
CG 978 11517-1-2500 ha
CG 979 1002-1-2500 ha
CG 980 11517-1-2500 ha
CG 981 1002-1-2500 ha
CG 982 11517-1-2500 ha
CG 983 1002-1-2500 ha
CG 984 11517-1-2500 ha
CG 985 1002-1-2500 ha
CG 986 11517-1-2500 ha
CG 987 1002-1-2500 ha
CG 988 11517-1-2500 ha
CG 989 1002-1-2500 ha
CG 990 11517-1-2500 ha
CG 991 1002-1-2500 ha
CG 992 11517-1-2500 ha
CG 993 1002-1-2500 ha
CG 994 11517-1-2500 ha
CG 995 1002-1-2500 ha
CG 996 11517-1-2500 ha
CG 997 1002-1-2500 ha
CG 998 11517-1-2500 ha
CG 999 1002-1-2500 ha
CG 1000 11517-1-2500 ha



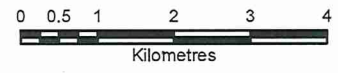
Additions to un-named nature reserves 18583 and 16000 Shires of Westonia and Yilgarn

Legend

- WA Townsites
- Crown reserve proposed for addition
- Road and Rail reserves proposed for addition
- Nature Reserve
- Crown Reserve
- Freehold
- Unallocated Crown Land
- Crown Lease
- Public Roads
- Other Public Lands



1:94,685
(A4)



GDA2020 MGA Zone 50



Produced by the
Department of
Biodiversity, Conservation
and Attractions



Graticule shown at 5 minutes intervals
Grid shown at 5000 metre intervals

The Dept. of Biodiversity, Conservation and Attractions does not guarantee that this map is without flaw of any kind and disclaims all liability for any errors, loss or consequence which may arise from relying on any information depicted.

Roads and tracks on land managed by DBCA may contain unmarked hazards and their surface condition is variable. Exercise caution and drive to conditions on all roads.

