

Reserve No. 28462

File No. 387/67

Government Gazette:

Name: Mission Lake

Area: 16,030 acres

Purpose: Flora & Fauna

Vesting:

Status:

Litho: 30/80 F1, 31/80 A 1

Location No.: Swan 8172

Shire: Gingin

Vegetational Region: S.W. Province, Darling District

*From Amendment  
to National Park  
by 31/10/69 p3375*

**RESERVE GAZETTAL ACTION SHEET  
FOR REGIONS AND DISTRICTS**

**LANDS CLERK:** Attach a copy of a map and forward to the following:

1. **REGIONAL MANAGER:** ✓  
CENTRAL FOREST, MIDWEST, GOLDFIELDS, KIMBERLEY, SWAN REGION,  
PILBARA, SOUTH COAST, SOUTHERN FOREST, WHEATBELT
2. **DISTRICT MANAGER:** Perth ✓
3. **DISTRICT WILDLIFE OFFICER:** Como ✓
4. **CLERK WOODVALE** ✓
5. **O.I.C. INVENTORY BUNBURY/KELMSCOTT/MANJIMUP**

**REASON FOR GAZETTAL:**

Excision for road widening - Orange Springs Road. Shire of  
Gingin, from Swan Location 8833 + 8172. Total excision 2.94 ha.

**RESERVE NUMBER:** 28462

**CALM FILE NUMBER:** 025066F3201

**NAME OF RESERVE:** Moore River National Park

**PURPOSE:** National Park

**CLASS:** C

**AREA:** 17542.59 ha

**VESTING:** NPWCA

**DATE OF CURRENT GAZETTAL:** 8 May 1992 Pages 1920 + 1919

**MAP REFERENCE:** Part Bidaminna NW 1:25000

**SHIRE:** Gingin

S. Water  
**LANDS CLERK**  
09 367 0221

22/10/92.  
**DATE**

*Map Missing (Perth 1:250,000)*

## RESERVE ACTION SHEET - CONSERVATION RESERVES

### RESERVE No. **A28462** – Moore River National Park

#### REASON FOR ACTION

Amendment of Reserve A28462, located in the Shire of Gingin, to include an unmade road (highlighted yellow on the attached map) and a closed road (highlighted green) into the reserve. A subsequent redefinition of the reserve's boundaries resulted in a reduction in area of 286.3713 hectares. Class A Reserve 28462 is vested in the Conservation Commission of Western Australia for the purpose of "National Park".

Area: 17252.853 hectares

At a request by the Shire of Gingin, a portion of State Forest No. 65 was excised to provide formal access to Swan Locations 1238, 1863, 2530 and 2750. To offset the loss of State forest involved (11.2996 ha), the unmade road and adjoining closed road were added to Reserve 28462. These areas (of approximately 40 hectares) were already being managed as part of the national park so their inclusion into the reserve simply formalised an existing arrangement.

- Date of amendment: 21 November 2001
- Customer Advice: p. 101
- Plans at Folios: pp. 45, 99-100,102

	OFFICER	ACTION
1	<b>CONSERVATION ESTATE OFFICER</b>	Send copies of advice & maps to: <ul style="list-style-type: none"> <li>- Lisa Wright, Woodvale _____</li> <li>- Manager, Swan Coastal District _____</li> <li>- Manager, Swan Region _____</li> <li>- Melissa D'Silva, Financial Services _____</li> </ul> Recommended IUCN classification: <span style="float: right;">N/A</span>
2	<b>LAND ACQUISITIONS OFFICER</b>	To note: _____
3	<b>UNIT LEADER, LAND &amp; EXTERNAL FUNDING</b>	To note: _____
4	<b>DIRECTOR, PARKS &amp; VISITOR SERVICES</b>	To note: _____
5	<b>INDEX CLERK, RECORDS</b>	To note: _____
6	<b>CONSERVATION ESTATE OFFICER</b>	Reserve details to inside cover of file & add details to Conservation Commission Reserves Summary Table _____

**Customer Advices for Reserve Actions  
1/05/2002 - 31/05/2002**

**Shire of Gingin 1/05/2002 - 31/05/2002**

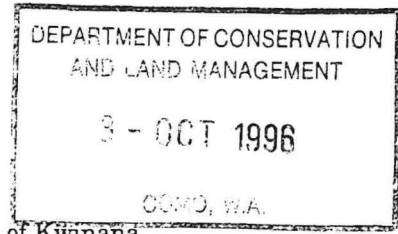
Reserve No.	Land Description	DOLA File No.	Volume/Folio	Action	Document No.	Registered	Street Name	Area	Public Plans
2334	Swan Location 13010 on Land Administration Plan 19953	01557-1893-05RO	3111-520	Reserve Cancellation "Water Catchment"	I039243	11/03/2002	Ashworth Road	181.9986 Ha	Gingin NE and NW (25)
2334		01557-1893-05RO	3111-520	Revocation of Management Order (Shire of Gingin) for the designated purpose of "Water Catchment".	I068207	09/04/2002	Ashworth Road	181.9986 Ha	Gingin NE and NW (25)
24019	Lancelin Lot 1035	02962-1954-01RO	3038-245	Amendment of Reserve to To now comprise Lancelin Lot 1037 on Land Administration Plan 27318 in lieu of Lot 1035, and of its area being reduced to 2126 square metres.	H982635	11/01/2002		2126 sqm	
28462	Locations 8172, 3230 & 8926 in the Swan District, and Swan Location 8833 on Land Administration Plan 13054.	02460-1965-03RO	3046-794	Amendment of Reserve to To now comprise Swan Location 8833 on Land Administration Plan 13054 and Swan Locations 13203 and 13204 on Land Administration Miscellaneous Plan 20113, in lieu of Locations 8172, 3230 & 8926, and of its area being recalculated to abt 17252.8530 hectares.	H933927	21/11/2001		17252.853 Ha	-286.3713 ha
45980	Lancelin Lot 1034	02445-1999-01RO	3038-244	Amendment of Reserve to To now comprise Lancelin Lot 1036 on Land Administration Plan 27318 in lieu of Lot 1034, and of its area being increased to 2573 square metres.	H982633	11/01/2002		2126 sqm	
46701		01047-1997-01RO	3115-580	Management Order to Shire of Gingin of 7 Brockman Street, Gingin, for the designated purpose of ""	I012417	12/02/2002		0 sqm	
46701	Swan Location 13525	00663-2000-01RO	3115-580	Reserve Creation for the designated purpose of "Pedestrian Access".	I012416	12/02/2002		2501 sqm	

\* TENIS d base amended  
 - while folder " GH 1/16

024111F1999 (KATZINA)

L .201

LAND ACT 1933  
CANCELLATION OF RESERVES



Made by His Excellency the Governor under Section 37.

The following reserves have been cancelled.

DOLA File 4291/965

Reserve No. 28327 (Kwinana Lot C694) "Use and Requirements of the Town of Kwinana

Public Plan: BG33 (2) 10.33 Moulton Street.

Local Authority—Town Of Kwinana

DOLA File 3028/995.

Reserve No. 44028 (Wagin Lots 1846, 1848, 1849 and 1850) "Use and Requirements of the Minister for Works".

Public Plans: BJ30 (2) 20. 35, 21.34 and 21.35. Tudor Street.

Local Authority—Shire of Wagin.

DOLA File 1915/995.

Reserve No. 44290 (Tincurrin Lot 8) "Use and Requirements of the Government Employees Housing Authority".

Public Plan: Tincurrin Town Site. McDougal Street.

Local Authority—Shire of Wickepin.

A. A. SKINNER, Chief Executive.

Reserve 28462

LB701

Schedule No. A31/1996

Exco No. 1060

DOLA 3054/1995

LAND ACQUISITION AND PUBLIC WORKS ACT 1902 (as amended)

NOTICE OF RESUMPTION OF LAND

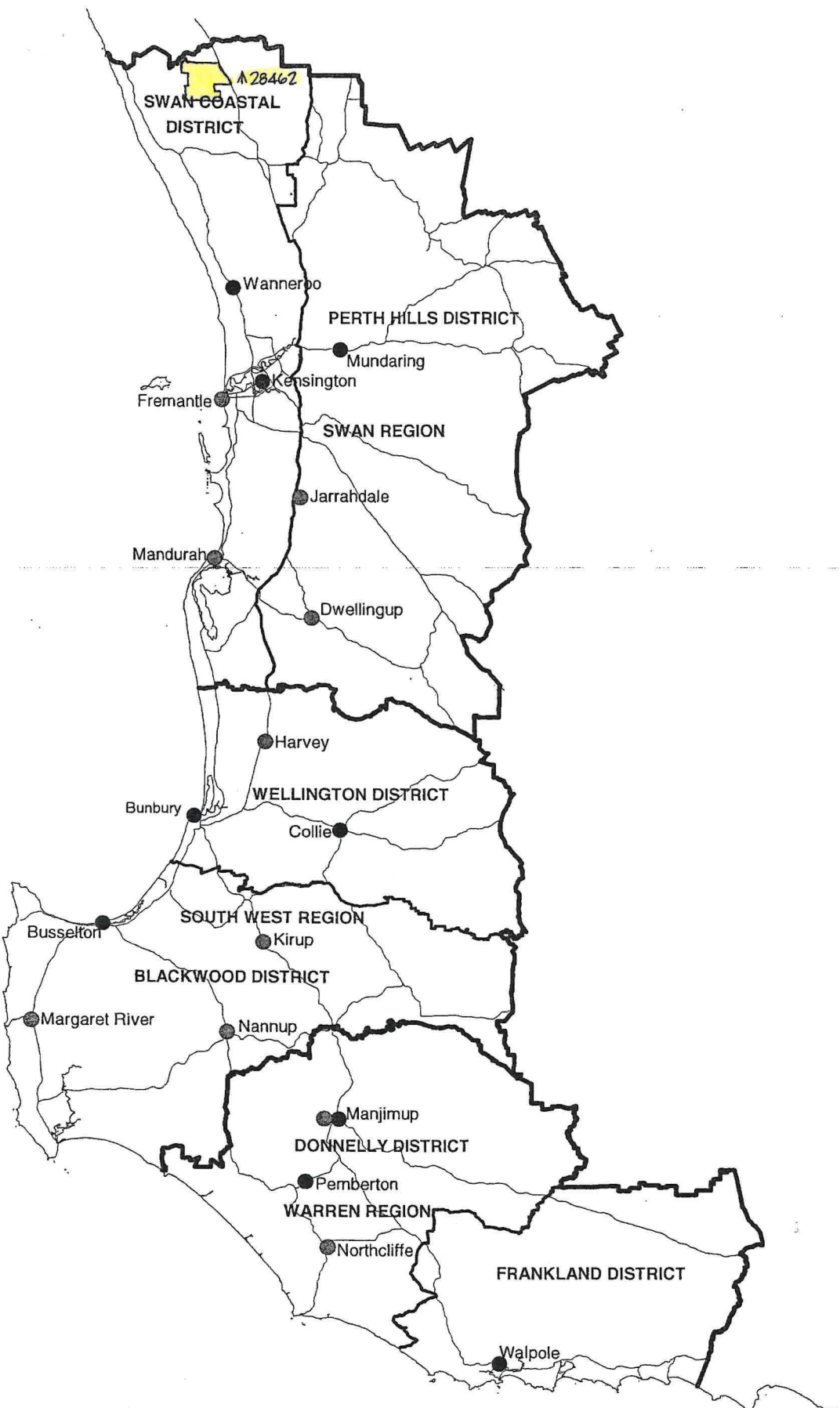
For the purposes of granting estates, interests or rights under written law as authorised by the Governor under Section 33C of the Land Acquisition and Public Works Act described in the Schedule (Use/Purpose), the land described in the Schedule ("the resumed land") has been set apart, taken or resumed. A plan and a more particular description of the resumed land may be inspected between 8.00 a.m. and 5.00 p.m. on working days at: Department of Land Administration, Midland Square, Midland.

The resumed land shall, by force of the Land Acquisition and Public Works Act 1902, be vested in Her Majesty for the public work, freed and discharged of all trusts, mortgages, charges, obligations, estates, interest, right-of-way, or other easements whatsoever.

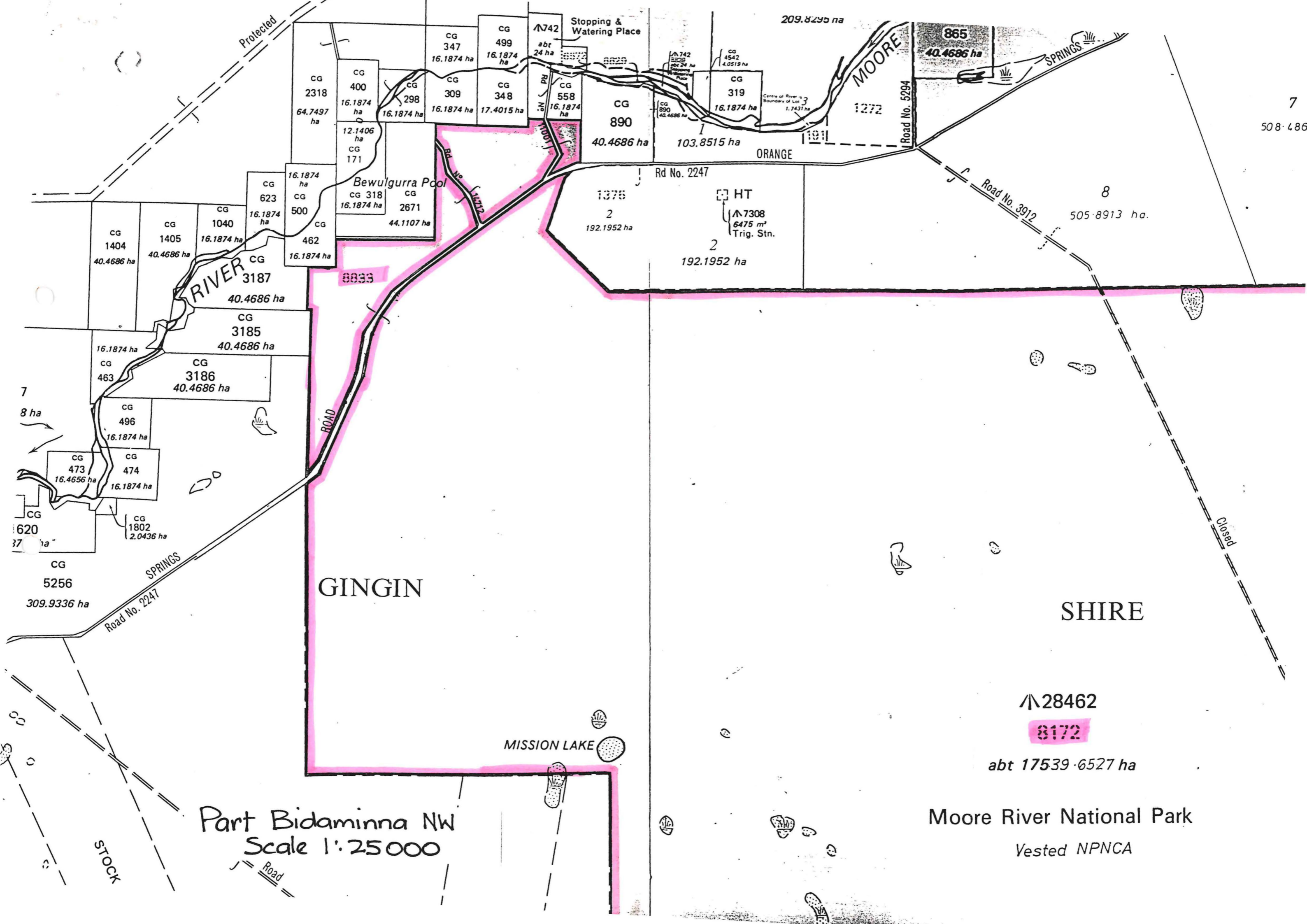
SCHEDULE

Table with 6 columns: Locality/Local Government/Region, Description of land affected, Interest holder/Registered native title claimant, Use/Purpose, Plan, Job Number/Reference. Rows include Albany (Town), Brookton (Shire), Carnarvon (Shire), Dandaragan (Shire), Gingin (Shire).

Handwritten notes at the bottom of the page, including "4-10-96" and "Mr Collins - for your letter pls MR".



**DEPARTMENT OF CONSERVATION AND LAND MANAGEMENT  
REGION AND DISTRICT BOUNDARIES - SOUTH WEST W A  
OCTOBER 2001**



Part Bidaminna NW  
Scale 1:25000

Moore River National Park  
Vested NPNCA

GINGIN

SHIRE

▲28462

8172

abt 17539.6527 ha

MISSION LAKE

Bewulgurra Pool

Stopping & Watering Place

MOORE RIVER

MOORE

SPRINGS

ORANGE

Rd No. 2247

Road No. 3912

Road No. 5294

Road No. 2247

7  
8 ha

8  
505.8913 ha.

7  
508.486

Closed

STOCK

Road

Protected

8833

ROAD

HT

▲7308  
6475 m<sup>2</sup>  
Trig. Stn.

Rd No. 2247

1375  
2  
192.1952 ha

2  
192.1952 ha

1272

CG 890  
40.4686 ha

CG 319  
16.1874 ha

CG 558  
16.1874 ha

CG 348  
17.4015 ha

CG 309  
16.1874 ha

CG 400  
16.1874 ha

CG 2318  
64.7497 ha

▲742  
abt 24 ha

CG 499  
16.1874 ha

CG 347  
16.1874 ha

209.8295 ha

865  
40.4686 ha

CG 4542  
4.0519 ha

▲742  
abt 24 ha

CG 319  
16.1874 ha

CG 558  
16.1874 ha

CG 309  
16.1874 ha

CG 400  
16.1874 ha

CG 2318  
64.7497 ha

CG 348  
17.4015 ha

CG 309  
16.1874 ha

CG 400  
16.1874 ha

CG 2318  
64.7497 ha

CG 558  
16.1874 ha

CG 309  
16.1874 ha

CG 400  
16.1874 ha

CG 2318  
64.7497 ha

CG 890  
40.4686 ha

CG 319  
16.1874 ha

CG 558  
16.1874 ha

CG 309  
16.1874 ha

CG 400  
16.1874 ha

CG 2318  
64.7497 ha

CG 890  
40.4686 ha

CG 319  
16.1874 ha

CG 558  
16.1874 ha

CG 309  
16.1874 ha

CG 400  
16.1874 ha

CG 2318  
64.7497 ha

CG 890  
40.4686 ha

CG 319  
16.1874 ha

CG 558  
16.1874 ha

CG 309  
16.1874 ha

CG 400  
16.1874 ha

CG 2318  
64.7497 ha

CG 890  
40.4686 ha

CG 319  
16.1874 ha

CG 558  
16.1874 ha

CG 309  
16.1874 ha

CG 400  
16.1874 ha

CG 2318  
64.7497 ha

CG 890  
40.4686 ha

CG 319  
16.1874 ha

CG 558  
16.1874 ha

CG 309  
16.1874 ha

CG 400  
16.1874 ha

CG 2318  
64.7497 ha

CG 890  
40.4686 ha

CG 319  
16.1874 ha

CG 558  
16.1874 ha

CG 309  
16.1874 ha

CG 400  
16.1874 ha

CG 2318  
64.7497 ha

CG 890  
40.4686 ha

CG 319  
16.1874 ha

CG 558  
16.1874 ha

CG 309  
16.1874 ha

CG 400  
16.1874 ha

CG 2318  
64.7497 ha

CG 890  
40.4686 ha

CG 319  
16.1874 ha

CG 558  
16.1874 ha

CG 309  
16.1874 ha

CG 400  
16.1874 ha

CG 2318  
64.7497 ha

CG 890  
40.4686 ha

CG 319  
16.1874 ha

CG 558  
16.1874 ha

CG 309  
16.1874 ha

CG 400  
16.1874 ha

CG 2318  
64.7497 ha

CG 890  
40.4686 ha

CG 319  
16.1874 ha

CG 558  
16.1874 ha

CG 309  
16.1874 ha

CG 400  
16.1874 ha

CG 2318  
64.7497 ha

CG 890  
40.4686 ha

CG 319  
16.1874 ha

CG 558  
16.1874 ha

CG 309  
16.1874 ha

CG 400  
16.1874 ha

CG 2318  
64.7497 ha

CG 890  
40.4686 ha

CG 319  
16.1874 ha

CG 558  
16.1874 ha

CG 309  
16.1874 ha

CG 400  
16.1874 ha

CG 2318  
64.7497 ha

CG 890  
40.4686 ha

CG 319  
16.1874 ha

CG 558  
16.1874 ha

CG 309  
16.1874 ha

CG 400  
16.1874 ha

CG 2318  
64.7497 ha

CG 890  
40.4686 ha

CG 319  
16.1874 ha

CG 558  
16.1874 ha

CG 309  
16.1874 ha

CG 400  
16.1874 ha

CG 2318  
64.7497 ha

CG 890  
40.4686 ha

CG 319  
16.1874 ha

CG 558  
16.1874 ha

CG 309  
16.1874 ha

CG 400  
16.1874 ha

CG 2318  
64.7497 ha

CG 890  
40.4686 ha

CG 319  
16.1874 ha

CG 558  
16.1874 ha

CG 309  
16.1874 ha

CG 400  
16.1874 ha

CG 2318  
64.7497 ha

CG 890  
40.4686 ha

CG 319  
16.1874 ha

CG 558  
16.1874 ha

CG 309  
16.1874 ha

CG 400  
16.1874 ha

CG 2318  
64.7497 ha

CG 890  
40.4686 ha

CG 319  
16.1874 ha

CG 558  
16.1874 ha

CG 309  
16.1874 ha

CG 400  
16.1874 ha

CG 2318  
64.7497 ha

CG 890  
40.4686 ha

CG 319  
16.1874 ha

CG 558  
16.1874 ha

CG 309  
16.1874 ha

CG 400  
16.1874 ha

CG 2318  
64.7497 ha

CG 890  
40.4686 ha

CG 319  
16.1874 ha

CG 558  
16.1874 ha

CG 309  
16.1874 ha

CG 400  
16.1874 ha

CG 2318  
64.7497 ha

CG 890  
40.4686 ha

CG 319  
16.1874 ha

CG 558  
16.1874 ha

CG 309  
16.1874 ha

CG 400  
16.1874 ha

CG 2318  
64.7497 ha

CG 890  
40.4686 ha

CG 319  
16.1874 ha

CG 558  
16.1874 ha

CG 309  
16.1874 ha

CG 400  
16.1874 ha

CG 2318  
64.7497 ha

CG 890  
40.4686 ha

CG 319  
16.1874 ha

CG 558  
16.1874 ha

CG 309  
16.1874 ha

CG 400  
16.1874 ha

CG 2318  
64.7497 ha

CG 890  
40.4686 ha

CG 319  
16.1874 ha

CG 558  
16.1874 ha

CG 309  
16.1874 ha

CG 400  
16.1874 ha

CG 2318  
64.7497 ha

CG 890  
40.4686 ha

CG 319  
16.1874 ha

CG 558  
16.1874 ha

CG 309  
16.1874 ha

CG 400  
16.1874 ha

CG 2318  
64.7497 ha

CG 890  
40.4686 ha

CG 319  
16.1874 ha

CG 558  
16.1874 ha

CG 309  
16.1874 ha

CG 400  
16.1874 ha

CG 2318  
64.7497 ha

CG 890  
40.4686 ha

CG 319  
16.1874 ha

CG 558  
16.1874 ha

CG 309  
16.1874 ha

CG 400  
16.1874 ha

CG 2318  
64.7497 ha

CG 890  
40.4686 ha

CG 319  
16.1874 ha

CG 558  
16.1874 ha

CG 309  
16.1874 ha

CG 400  
16.1874 ha

CG 2318  
64.7497 ha

CG 890  
40.4686 ha

CG 319  
16.1874 ha

CG 558  
16.1874 ha

CG 309  
16.1874 ha

CG 400  
16.1874 ha

CG 2318  
64.7497 ha

CG 890  
40.4686 ha

CG 319  
16.1874 ha

CG 558  
16.1874 ha

CG 309  
16.1874 ha

CG 400  
16.1874 ha

SHIRE

OF

GINGIN

28462

8172

abt 17539-6527 ha

Moore River National Park

Vested NPNCA

Pipeline

EA 215

(Underground)

CG

5430

1168.9977 ha

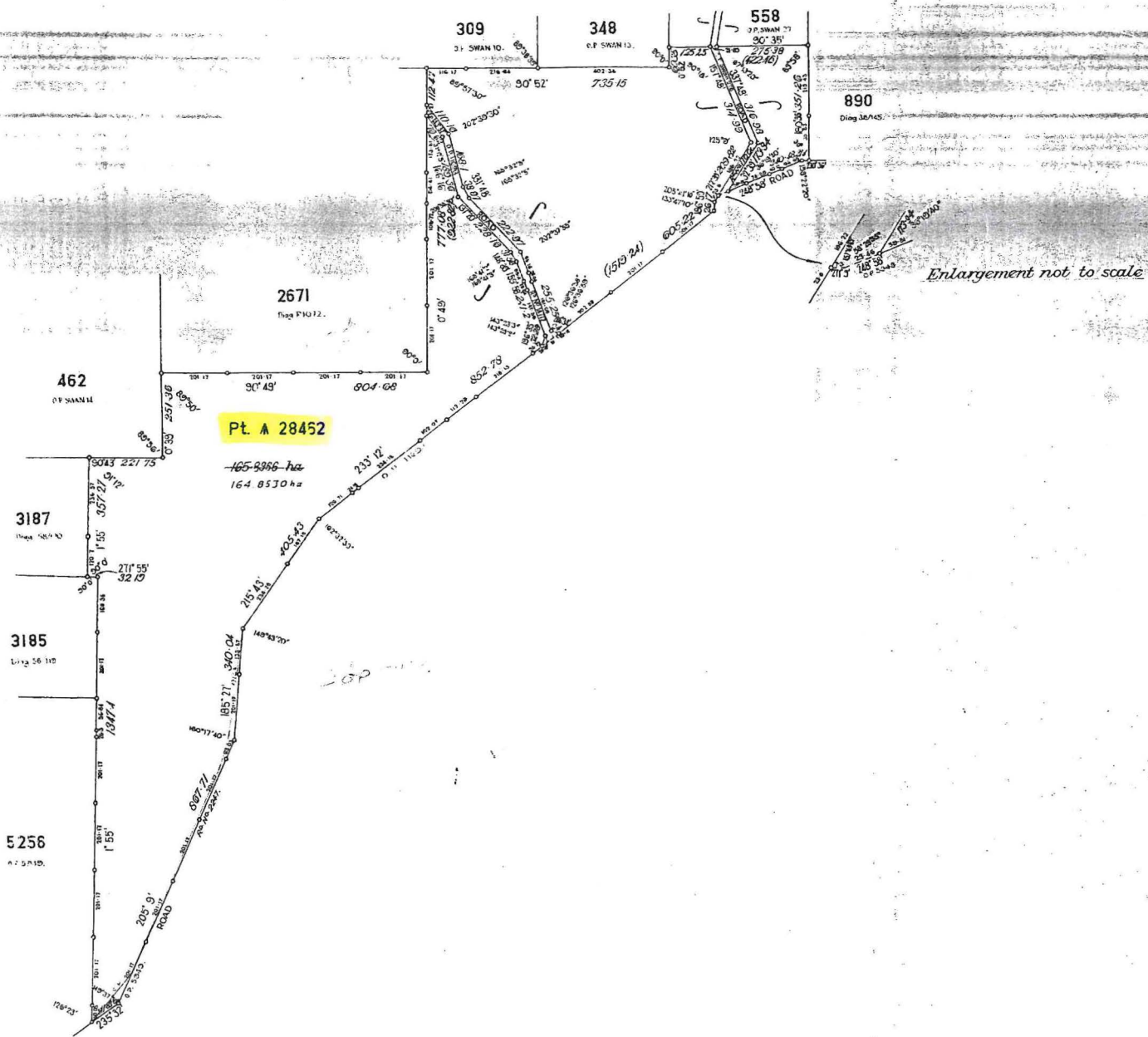
BRAND

6 Mile Swamp

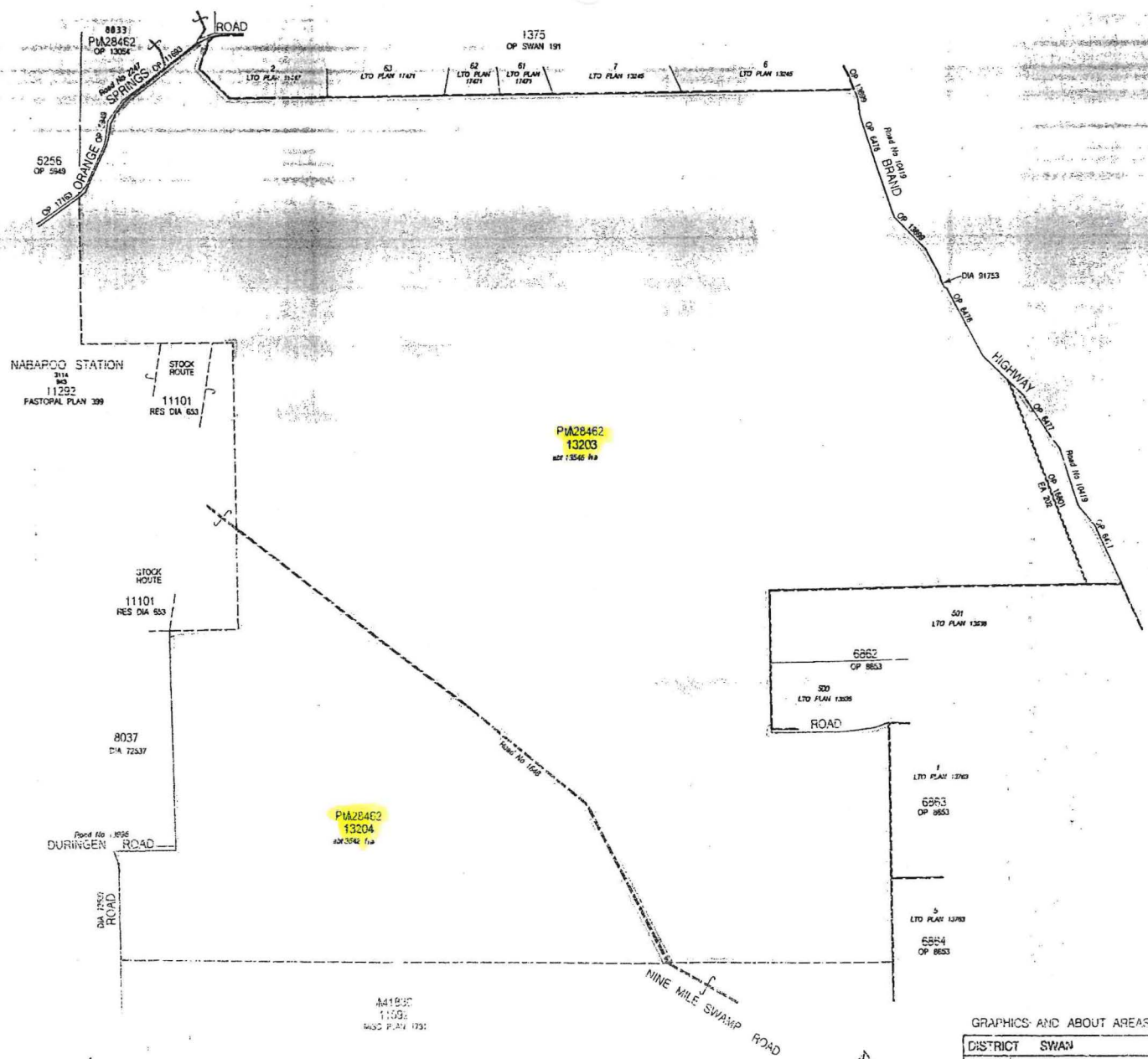
HIGHWAY  
Road No. 10479

Closed

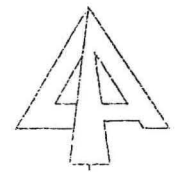
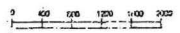
Road



LAND DISTRICT <b>SWAN</b>	<b>Location 8833</b>	G. R. No. 431/48 SCALE 1:7500 All measurements in metres
<b>SURVEYOR'S CERTIFICATE</b> I hereby certify that this survey was performed by me personally (or under my personal supervision, inspection and field check), in strict accordance with the (Licence of Surveyors (Regulations of Surveyors) Regulations, 1961.	Ameth observed at..... or assumed from O.P. 11023 Date of marking Completed..... Field Book No. Completed Page..... Public Plan No. 30/80 OF..... Plan drawn M. CULL Date 21-1-73	<b>SURVEY APPROVED</b> Calculation Book No. 1195 30/73 Compared with F.B. 1195 30/73 Account No. .... Account passed..... Examined..... Original plan passed..... Date 21-1-73 M. CULL

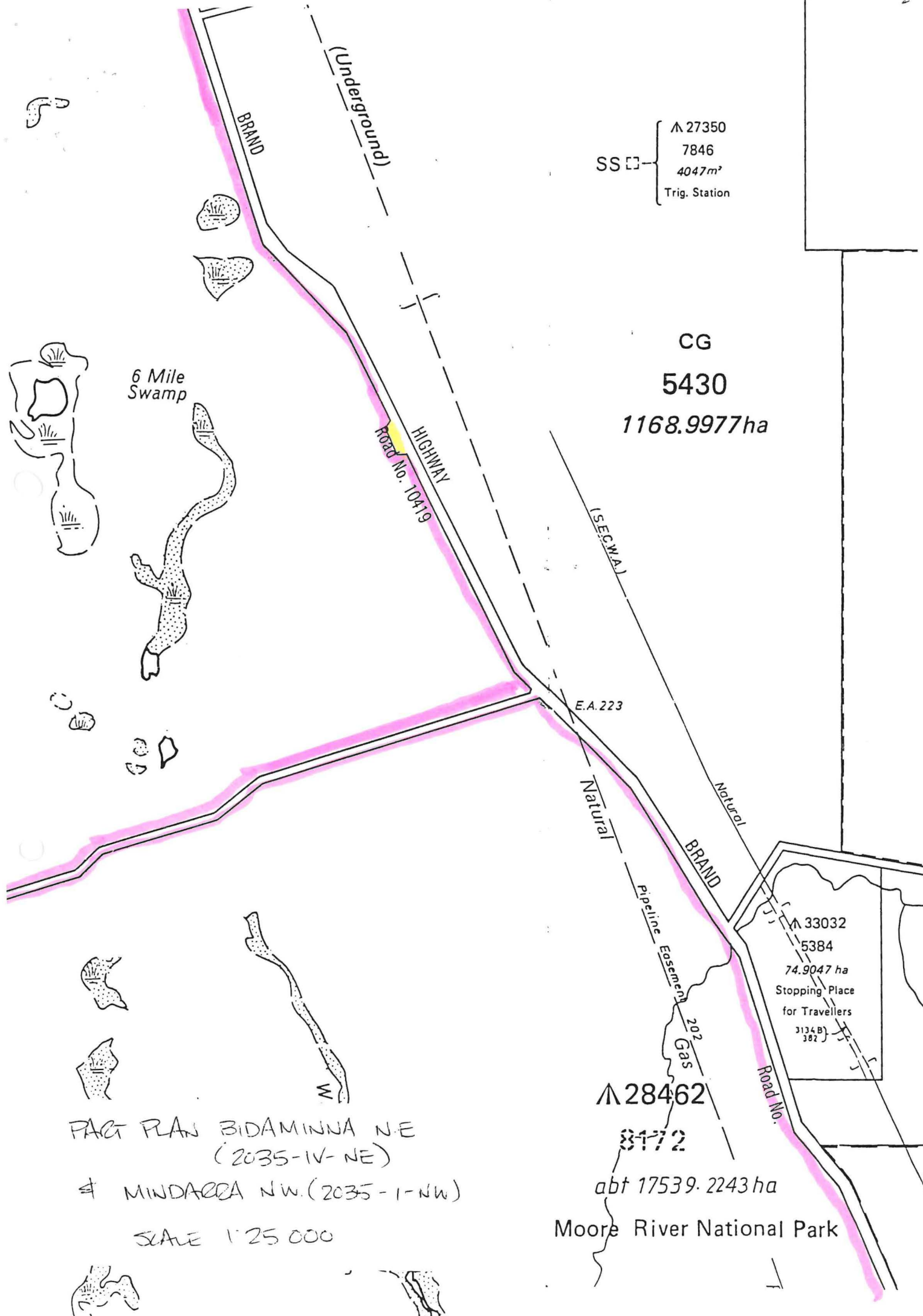


M41830  
11193  
MISC PLAN 1791



GRAPHICS AND ABOUT AREAS DERIVED FROM DCIA'S SPATIAL CADASTRAL DATA BASE Feb 95

DISTRICT SWAN	IN ORDER OF DEMANDS	LAND ADMINISTRATION ACT MISCELLANEOUS PLAN 2013
LOCAL AUTHORITY SHIRE OF SWAN	RELATE TO	
FILE 2480/1965 v3	Loc's 13203 & 13204	APPROVED 2013
SCALE 1:40000	SUBJECT TO SURVEY	
Public Plan	NOT FOR ALIENATION PURPOSES	APPROVED 2013
Authorisation		
Prepared by PAUL MITCHELL Date 11/03/05	Checked by P. R. 11/03/05	APPROVED 2013
Checked by P. R. 11/03/05	Checked by P. R. 11/03/05	



SS □ {
 

- ▲ 27350
- 7846
- 4047m<sup>2</sup>
- Trig. Station

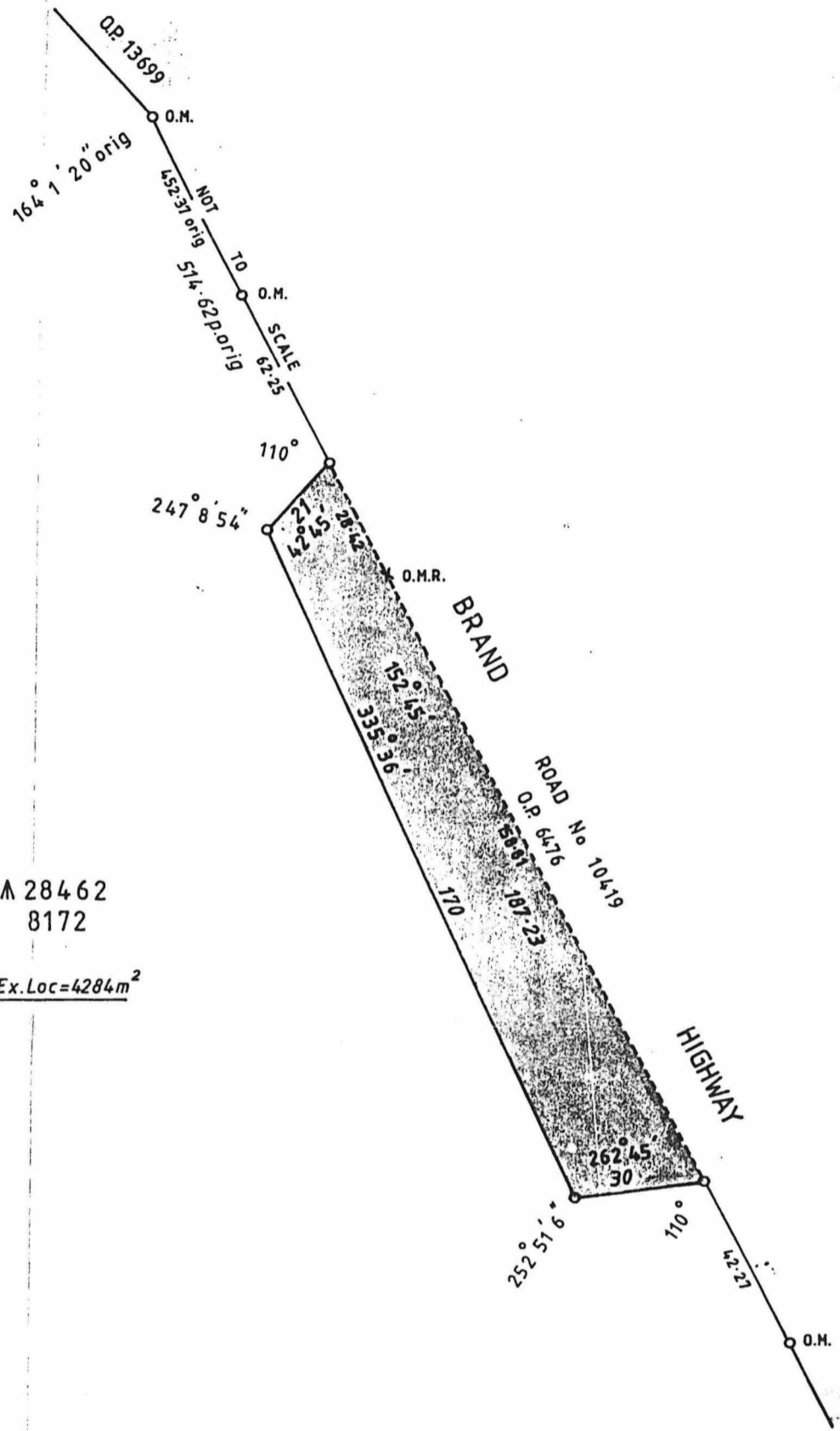
CG  
 5430  
 1168.9977ha

▲ 33032  
 5384  
 74.9047 ha  
 Stopping Place  
 for Travellers  
 3134B  
 382

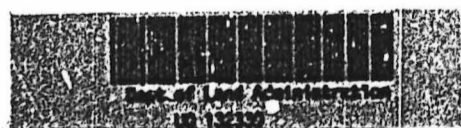
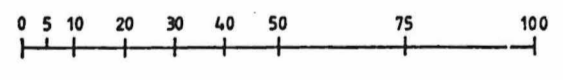
▲ 28462  
 8172  
 abt 17539.2243 ha

Moore River National Park

PART PLAN BIDAMINNA NE  
 (2035-IV-NE)  
 & MINDARDA NW. (2035-1-NW)  
 SCALE 1:25 000



A 28462  
 8172  
 Area Ex. Loc = 4284 m<sup>2</sup>



<b>LAND DISTRICT</b> SWAN		<b>ROAD WIDENING EX LOCATION 8172</b>		
<b>SURVEYOR'S CERTIFICATE</b>				
<small>I hereby certify that:-          (a) this plan of survey is a correct and accurate representation of the survey carried out by me personally / under my sole personal supervision, inspection and field check and recorded in fieldbooks lodged for the purpose of this plan of survey;          (b) the measurements are in strict accordance with the Licensed Surveyors' Guidance of Surveyors' Regulations 1981 and in particular regulations 23 and 34 of those regulations; and          (c) this survey and this plan of survey are in strict accordance with the requirements of the Licensed Surveyors' Guidance of Surveyors' Regulations 1981 and the relevant law in relation to which it is lodged.</small>				
Licensed Surveyor <u>P.P. KRAFT</u> <small>to strike out which ever does not apply</small>		Date <u>26.6.94</u>		SCALE 1:1250 <small>measurements in metres</small>
Prepared <u>P.P. KRAFT</u>		In order for certification _____ Date _____		FILE 2006/993
Examined <u>[Signature]</u> Date <u>20.7.94</u> In order for further action <u>[Signature]</u> Date <u>5.8.94</u>		DIAGRAM CERTIFIED CORRECT _____ Authorized Land Officer Date _____		SURVEYOR P.P. KRAFT PUBLIC PLAN BIDAMINNA N.E. (25) FIELD BOOK 65600 Page 1-3 Date of Marking 18-12-1993 INDEX PLAN BIDAMINNA N.E. (25)
		AZIMUTH FROM O.R. 13699		RECORDED ON KEYPLAN SURVEY INDEX PLAN J.A.G. 20-7-94
		RECORDED ON PUBLIC PLAN REGISTERED W.S.S. 20-7-94		DEPARTMENT OF LAND ADMINISTRATION DIAGRAM 91753