

50

RESERVE No: 30082

REASON FOR ACTION: (1) Implementation of land exchange arrangements negotiated with Juna Downs and Mulga Downs stations (2) Purpose changed from "National Park - Dales Gorge" to just "National Park" (3) Recalculation of area of park to 606 597 ha. (4) Renamed 'Karijini National Park' (2020)

OFFICER ACTION ACTION DATE

1. ~~LANDS CLERK~~ <sup>MRB</sup> Fill in above details ✓  
2. ~~S.C. RESERVES CLERK~~

<sup>NR2</sup>  
<sup>13.3.92</sup> Attach copies of gazettal notices to file (folios: 306-309) ✓

Enter relevant details on file cover. ✓

3. ~~OFFICER IN CHARGE - RECORDS - INDEX CLERK~~ For new reserves: Index Reserve's name  
emessenger 13/3/92 Index Reserve's number

4. ~~SENIOR DRAFTSPERSON LEGAL MAPPING~~ Amend Litho  
NR2  
27/3/92 Attach copy of litho to file (mark litho name/number) Done see FILE 13 now DT 04

5. ~~LANDS CLERK~~ Send copies of gazettal notices (or Lands Department memo) and map to:  
SEB  
14.4.92 Clerk Woodvale \_\_\_\_\_  
Regional Manager \_\_\_\_\_  
OIC Inventory, Kelmscott/Bunbury/Manjimup \_\_\_\_\_  
District Manager \_\_\_\_\_  
District Wildlife Officer \_\_\_\_\_

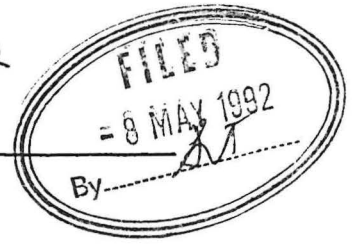
Note: Information sent must include:  
(a) Department's file number  
(b) Litho number/name

6. ~~SENIOR CLERK RESERVES~~ To Note NR2 15.4.92

7. ~~MANAGER, LAND ADMIN~~ To Note 16/4

<sup>15.92</sup> 8. Alan Padgett - Planning Branch to note  
8.A ~~DIRECTOR NATURE CONSERVATION/NATIONAL PARKS~~ To Note AP 4/5/92

~~Reserves Clerk - p. 25~~ B27/5



## RESERVE ACTION SHEET - CONSERVATION RESERVES

RESERVE No. **30082**

### REASON FOR ACTION

- Amendment of class "A" Karijini National Park vested in the NPNCA.  
Area: 627 441.3130 ha
- Plans and diagrams used for the creation of Reserve 30082 required amendment following survey of Windell Locations 121, 122, 130 and 131. Adjustment of area as a consequence, resulted in a net reduction of 3.4726 ha (see letter from DOLA at page 126).
- Gazettal date: 26.9.1997 See folio 129
- Plans at folios 125, 137 and 138

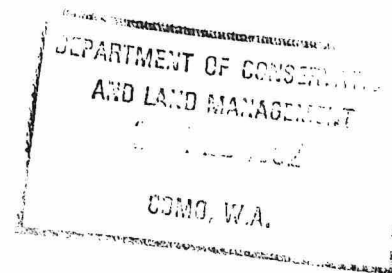
	OFFICER	ACTION
1	<del>RESERVES</del> <i>sc</i>	- Fill in above details _____ - Attach copies of gazettal notices to file _____
2	INDEX CLERK, RECORDS	- Index reserve's name _____ - Index reserve's number _____
3	<del>RESERVES CLERK</del> <i>sc</i>	Send copies of gazettal notices and Map to: - <b>Lisa Wright, Woodvale</b> _____ ✓ - Maitland Parker, Karijini NP _____ ✓ - Regional Manager, Pilbara _____ ✓
4	<del>CONSERVATION ESTATE OFFICER</del>	To note: <i>Sharon Colliss 30.3.98</i>
5	LAND ACQUISITIONS OFFICER	To note:
6	MANAGER, PLANNING & VISITOR SERVICES	To note:
7	DIRECTOR, NATURE CONSERVATION/ NATIONAL PARKS	To note:

9/28

Your Ref: ORIGINAL ON 02A959F3201  
COPIES ON 018223F3102, 023821F3201  
Our Ref: 2531/954V3, 3177/48V6, 1517/61, 2103/963 DC:NM

Telephone: 323 1416  
Enquiries: D. CHAN

EXECUTIVE DIRECTOR  
DEPARTMENT OF CONSERVATION AND  
LAND MANAGEMENT  
PO BOX 104  
COMO WA 6152



I advise for your information that:-

1. (a) Class "A" Reserve 24491 "National Park" is amended by excising an area surveyed as Victoria Location 11890 on Diagram 89981 and of its area being reduced to about 39,936.7500 hectares. Public Plan Pinjarrega 1:50,000.
- (b) Class "A" Reserve 30082 "National Park - Dales Gorge" is amended to comprise Windell Locations 126, 127 and 131 on Reserve Plan 333 in lieu of Locations 7 and 50 and of its area being recalculated to about 606,597 hectares.
- (c) The purpose of Class "A" Reserve 30082 is changed to "National Park". Public Plans Roy Hill and Mount Bruce 1:250,000.
- (d) Class "A" Reserve 27575 (Swan Locations 6270, 10313, 3323 and 10987) "National Park" is amended by excluding an area surveyed as Swan Location 11533 on Plan 17813 and of its area being reduced to 1,068.6380 hectares. Public Plans Swan 1:10,000 1.3, 2.3. File 2103/63.
- (e) Class "A" Reserve 10129 "Water and Conservation of Flora and Fauna" is amended to comprise Kent Location 748 on Plan 17737 and of its area being established at 1,891.5618 hectares. Public Plans Lake Joy and Woondingellup 1:50,000.

...2

Notice to this effect was assented in Parliament of Western Australia dated December 17 1991 and I enclose a print showing the said reserve.

*O*

*enc* R. PUMPHREY  
A/MANAGER  
ACQUISITIONS, ROADS AND RESERVES  
LAND OPERATIONS DIVISION

February 20, 1992

Enc

02NMLP40

3.3 92.  
~~Reserves Clerk~~ BB 7/5/92

§

## CLAUSE 10

Reserve No. 30082 (Hamersley Range National Park).

10. (1) Reserve No. 30082, classified as of Class A, containing 604 089.946 4 hectares or thereabouts set apart for "National Park-Dales Gorge" and vested in the Authority is amended -

(a) by excising several portions of the reserve; and

(b) by including several portions of Crown land,

so that the reserve is comprised of an area of 606 597 hectares or thereabouts, being Windell Locations 126 and 127 on Reserve Plan No. 333.

(2) The purpose of Reserve No. 30082, as amended by subsection (1), is changed from "National Park-Dales Gorge" to "National Park".

During 1990 two excisions were made from Class "A" Hamersley Range National Park - Dales Gorge Reserve 30082.

The first was to exclude an area comprising 354.5017 hectares (as shown on DOLA Miscellaneous Diagram 170) which consisted of a strip 200 metres wide for the proposed Wittenoom - Roy Hill Road with the balance being released for tourist purposes. Clause 11 of Reserves and Land Revestment Act No. 21 of 1990 authorised the exclusion.

The second adjustment was excision of land required for the "Marandoo Project". Clause 15 of Reserves and Land Revestment No. 71 of 1990 authorised the action which resulted in areas of 9305.3828 hectares and 3951.6491 hectares comprising Windell Locations 121 and 122 respectively being excluded.

During transition of Act 21 of 1990 (Reserves Bill No. 1) it was reported to Parliament that further changes to the Reserve would be presented as soon as it became possible to do so. The changes related to several land exchanges and matters have now progressed to a stage where further Reserves Bill action is necessary to complete the dealings.

Two land exchanges are proposed. The first is best explained by referring to the attached plan. The areas coloured green and areas coloured brown and hachured black have been surrendered to the Crown by Mulga Downs Pastoral Station. The green areas will be incorporated within the National Park while the other portions are earmarked for the Wittenoom - Roy Hill Road. In exchange, Mulga Downs will gain the areas coloured pink. The changes are linked to the position of the Wittenoom - Roy Hill Road and are intended to provide more manageable boundaries for both parties.

The other exchange relates to Juna Downs Pastoral Station. Juna Downs has surrendered the area coloured orange on the second plan attached for inclusion in the Park in exchange for the portions of Park shown coloured yellow. Once again the changes are made for more effective management and to legitimise well established occupation of areas by the Pastoral Station.

It has been determined that the most convenient method of dealing with all the boundary changes was to completely redefine the reserve and Reserve Plan 333 has been drawn accordingly. The reserve will comprise Windell Location 126 and 127 as shown coloured pink.

For expediency it has been decided to excise the balance of the Wittenoom - Roy Hill Road at this time even though the Shire of Ashburton has asked the EPA to make a formal assessment on possible environmental matters. The decision to proceed with this excision was based upon the following facts:-

- (a) part of the alignment has already been excised. (Reserves Act 21/1990).

37 A  
/

- 2 -

- (b) the Mulga Downs Pastoral Station has agreed to a land exchange based on this alignment.
- (c) it will avoid a further Reserves Bill submission to Parliament for separate excision.

If it is eventually considered that major alignment changes may be necessary or the proposal should not proceed, then the future of the land can be evaluated at that time.

Reserves Bill action is necessary to redescribe the Class "A" Reserve. In addition CALM has requested that the purpose of Reserve 30082 be changed from "National Park - Dales Gorge" to simply "National Park". There is no objection to this change which fits with CALM's practice to rationalise reserve purposes. However, reserves Bill action is also required to make the change.

Shire of Ashburton  
Electoral District of Pilbara  
Mining and Pastoral Region

## LAND ADMINISTRATION

LA101

## ADDENDUM

DOLA Files: 1212/894 and 2033/987.

In the notice at page 3341 of the *Government Gazette* dated 5 July 1991, in respect to the amendment of Mount Magnet Townsite include "and Portion of Lot 562" following the words "Mount Magnet Lot 555".

DOLA File 374/67.

In the Notices appearing at pages 575 and 3307 of the *Government Gazette* dated 14 February 1969 and 9 September 1983 respectively, with reference to Reserve 29558 insert "Suburban" after the word "Greenmount" where it appears.

D. MULCAHY, Chief Executive Officer,  
Department of Land Administration.

LA401

## RESERVES AND LAND REVESTMENT ACT No. 57/1991

It is hereby notified that pursuant to the above Act assented to on December 17, 1991, the undermentioned reserves have been dealt with in the manner described.

1. Class A Reserve 18720 "National Park" to comprise Margaret River Lots 45, 46, 53, 54 and 96 on Reserve Plan 334 and of its area being established at 18.0195 hectares. The purpose of Reserve 18720 is changed to "Park and Recreation". Public Plans Margaret River Townsite 1:2000 09.02, 09.03. File 807/1988.
2. Class A Reserve 29911 (Boyup Brook Lot 342) "Park" is amended by excising an area of 754 m<sup>2</sup> now comprised in Lot 369 on Diagram 89882 and of its area being reduced to 2.3147 hectares. Public Plan Boyup Brook 1:2000 5.17. File 445/53.
3. Class A Reserve 18090 (Cunderdin Lots 282 and 283) "Recreation" is cancelled. Public Plan Cunderdin 1:2000 Pt 14.18. File 656/989.
4. (a) Class A Reserve 39960 (Nelson Locations 13286, 13287 and portion of each of Locations 5616 and 5617) "National Park" is cancelled.  
(b) Class A Reserve 40841 (Nelson Location 13318) "National Park" is cancelled.  
(c) Class A Reserve 41466 (Nelson Locations 13303, 7594, 13344 and portion of each of Locations 8730 and 12270) "National Park and Water" is amended by including the land referred to in paragraphs (a) and (b) above and its area is increased to 21 608.2688 hectares. Public Plans Deep River SW, NW, Wainbup SE, NE, Saddle Island NW and Pt Chatham NE 1:25 000. File 2580.990.
5. (a) The classification of Class A over Reserve 8800 is cancelled (now Class C).  
(b) The purpose of Class C Reserve 8800 (Goomalling Lot 9) is changed from "Park and Rest Room" to "Park and Community Centre". Public Plan Goomalling 1:2000, 30.18. File 7134/03 V2.
6. (a) **Class A Reserve 30082** "National Park—Dales Gorge" is amended to comprise Windell Locations 126, 127 and 131 on Reserve Plan 333 in lieu of Locations 7 and 50 and of its area being recalculated to about 606 597 hectares.  
(b) The purpose of **Class A Reserve 30082** is changed to "National Park". Public Plans Roy Hill and Mount Bruce 1:250 000. File 3177/948 V6.
7. Class A Reserve 18414 (Wellington Location 4071) "Stopping Place" is cancelled. Public Plan Lake Preston 1:25 000 SE. File 5347/22.
8. Class A Reserve 10129 "Water and Conservation of Flora and Fauna" is amended to comprise Kent Location 748 on Plan 17737 and of its area being established at 1 891.5618 hectares. Public Plans Lake Joy and Woondingellup 1:50 000. File 1517/61.
9. The purpose of Class A Reserve 10504 (Nelson Location 12182) is changed from "Recreation and Stopping Place" to "Parkland Rehabilitation, Gravel and Water". Public Plans Deeside NE and Yerraminnup SE 1:25 000. File 501/01.
10. Class A Reserve 27575 (Swan Locations 6270, 10313, 3323 and 10987) "National Park" is amended by excluding an area surveyed as Swan Location 11533 on Plan 17813 and of its area being reduced to 1 068.6380 hectares. Public Plans Swan 1:10 000 1.3, 2.3. File 2103/63.
11. Class A Reserve 20091 "Recreation and Parklands" is amended to comprise Swan Location 11139 on Plan 17410 in lieu of Locations 3243, 2454, 2487, 2401, 2457 and 2411 and of its area being established at 84.4460 hectares. Public Plans Perth 1:2000, 11.38, 11.39, 12.38 and 12.39. File 6169/28 V2.
12. Class A Reserve 24491 "National Park" is amended by excising an area surveyed as Victoria Location 11890 on Diagram 89981 and of its area being reduced to about 39 936.7500 hectares. Public Plan Pinjarrega 1:50 000. File 2531/54 V3.

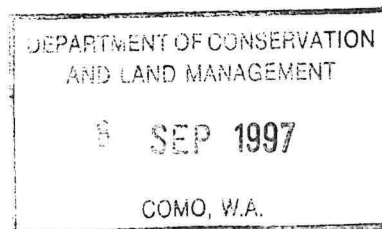
1 Records please file  
2 Reserves classed 7.2.92  
BB 13/2

SENT  
DIRECT

126  
MIDLAND SQUARE, MIDLAND  
WESTERN AUSTRALIA  
Postal Address: PO Box 2222  
Midland, Western Australia 6056

Your Ref:  
Our Ref: 3177/948 (Job No 954907) KE:NT  
Telephone: (09) 273 7284 Facsimile: (09) 273 7683  
Enquiries: Kevin Emrose

Executive Director  
Department of Conservation and Land Management




### CLASS 'A' RESERVE 30082 - KARIJINI NATIONAL PARK

Section 31 (4) of the Land Act 1933 allows for the minor amendment to the boundaries of Class 'A' reserves created using other than survey plans or diagrams.

The above mentioned Reserve was created using Reserve Plans and Diagrams and for Windell Location 133 and Gregory Location 94 Miscellaneous Diagram 337. Accordingly with the survey of Windell Locations 121, 122, 130 and 131 and the creation of Plan 19121, copy enclosed, the area of Reserve 30082 is to be adjusted with a nett reduction to the area of the reserve of 3.4726 hectares. That is from 627, 444. 7856 hectares to 627, 441. 3130 hectares.

The Executive Council meeting of 23 September 1997 has been targeted for this action with a suitable notice appearing in the Government Gazette 3 October 1997, all going smoothly.  
(NB Gazetted 26 9 97)

It would be appreciated if the National Parks and Nature Conservation Authority was informed of this minor amendment action.

  
**TREVOR THOMSON**  
**MANAGER**  
**ACQUISITION, ROADS AND RESERVES**  
**LAND OPERATIONS DIVISION**

04 September 1997

95-4907nl01

*File note: Copy taken for NAWCA  
Reserve Changes in Reserves Summary  
This advice to Rear District/LIB following*

*Noted JG 9/9/87*

*1. RESERVES Clerk*

9/10 AS

1. cis hke

2. J. Gilmore

040915 F3201

129  
S.

26 September 1997]

GOVERNMENT GAZETTE, WA

5377

LA802\*

**LAND ACT 1933**

**AMENDMENT OF CLASS 'A' RESERVE**

Made by His Excellency the Governor under Section 31(4).

The following reserve has been amended.

DOLA File: 03177-1948-07RO.

Class A Reserve No: 30082 (Windell and Gregory Districts) "National Park" to comprise Windell Locations 94, 126, 127, 128, 131 and 133 and Gregory Location 94 as delineated and shown on Land Administration Reserve Diagrams 984 and 1090, Reserve Plan 333 and Miscellaneous Diagram 337 and of its area being recalculated (reduced) to 627,441.3130 hectares accordingly.

Public Plan/s: Wittenoom (100). Hamersley-Mount Bruce Road.

Local Authority: Shire of Ashburton.

A. A. SKINNER, Chief Executive.  
DEPARTMENT OF CONSERVATION  
AND LAND MANAGEMENT  
- 3 OCT 1997  
PERTH, W.A.

LB201\*

**LAND ACT 1933**

**CANCELLATION OF RESERVE**

Made by His Excellency the Governor under Section 37.

The following reserves have been cancelled.

DOLA File: 06673-1951-01RD.

Reserve No: 23470 (Bakers Hill Lot 284) "Railway Purposes".

Public Plan/s: BH35 (2) 08.08 St George Street.

Local Authority: Shire of Northam.

DOLA File: 00634-1997-01RO.

Reserve No: 44776 (Swan Location 12673) "Use and Requirements of the Minister for Works".

Public Plan/s: BG34 (2) 18.31 Ivanhoe Street.

Local Authority: Town of Bassendean.

A. A. SKINNER, Chief Executive.

**LOCAL GOVERNMENT**

LG101

**CORRECTION**

In the Closure of Private Street Notice published in the *Government Gazette* of 27 June 1997 on page 3126 reference to Plan 1528 and Certificate of Title Volume 1355 Folio 799 was omitted. To correct the situation—

1. In line 10 of the notice delete the words "Plan 6097 and " and insert "Plans 1528 and 6097,;" and
2. In line 11 of the notice after the words "contained in" insert "Certificate of Title Volume 1355 Folio 799 and".

JOHN LYNCH, Executive Director,  
Department of Local Government.

LG301

**LOCAL GOVERNMENT ACT 1995**

**City of Wanneroo**

**Amendment to Local Laws Relating to Reserves and Foreshores**

In pursuance of the powers conferred upon it by the abovementioned Act, the Council of the City of Wanneroo hereby records having resolved on the 27th day of August 1997, to make the following amendment to its Local Laws Relating to Reserves and Foreshores as published in the *Government Gazette* on 28 September 1990, including subsequent amendments.

LMR M. 11. 1. JLM 23/3

1. MS. J. Gilmore amk 22/10/97

It has been determined that the boundaries of Class "A" Karijini National Park (formerly Hamersley) Reserve 30082 be expanded to enhance conservation values of the Park.

A number of areas have been identified for likely inclusion within the Park but at this point in time it is only possible to proceed with the addition of three sites. The balance will be considered for inclusion in subsequent Reserve Bills once all obstacles have been overcome.

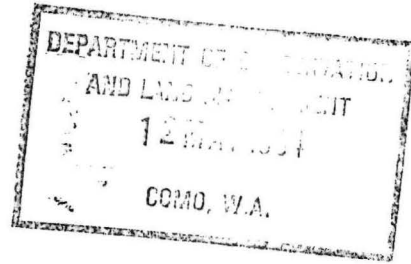
The three areas recommended for amalgamation are:-

- (1) Gregory Location 94 and Windell Location 133 (as one site) defined on Department of Land Administration Miscellaneous Diagram 337. These locations are vacant Crown land and surround that portion of the existing National Park containing Hamersley Gorge (Windell Location 127).
- (2) Class "C" Reserve 42165 (Windell Location 94) "Conservation Park". This area is known as "O'Briens block" and was temporarily protected by reservation pending formal inclusion within the National Park in the first available Reserves Bill.
- (3) Class "C" Reserve 41864 (Windell Location 128) "Conservation Park" which includes Mt Meharry and surrounding land. This "Conservation" reserve was also created pending inclusion in the Park.

In view of the Class "A" status over Karijini National Park, only Parliament can approve the additions and this clause seeks to achieve that action. For administrative convenience it is also proposed to cancel the two "C" Class reserves involved in this exercise. The three sites are coloured red on the sketch and numbered 1, 2, and 3 accordingly.

Shire of Ashburton  
Electoral District of Pilbara  
Mining and Pastoral Electoral Region

## CLAUSE 15



## 20 Reserve No. 30082 (Karijini National Park)

15. (1) Reserve No. 42165, classified as of Class C, containing 10 359.385 6 hectares or thereabouts as shown on Reserve Diagram No. 1090, set apart for "Conservation Park" and vested in the Authority, is cancelled.

25 (2) Reserve No. 41864, classified as of Class C, containing 5 998.400 0 hectares as shown on Reserve Diagram No. 984, set apart for "Conservation Park" and vested in the Authority, is cancelled.

(3) Reserve No. 30082, classified as of Class A, containing 606 597.000 0 hectares or thereabouts, set apart for "National Park" and vested in the Authority is amended —

- 5 (a) by including the land referred to in subsection (1);
- (b) by including the land referred to in subsection (2); and
- 10 (c) by including a portion of Crown land comprising 4 490.000 0 hectares, being Gregory Location 94 and Windell Location 133, as shown bordered pink on Miscellaneous Diagram No. 337,

so that the reserve is comprised of an area of 627 444.785 6 hectares or thereabouts.

*Copied from briefing notes to the Reserves Bill 1993.  
Reserves Bill 1994 assented to on 22 April 1994,  
no. 16 of 1994. (GG 6 May 1995).*

*Records — file on the Karijini NP Control file please  
D.H.M.P. 11/5/94.*

*CLERK, WOODVALE - FYI.*

**Reserve No. 30082 (Karijini National Park)**

15. (1) Reserve No. 42165, classified as of Class C, containing 10 359.385 6 hectares or thereabouts as shown on Reserve Diagram No. 1090, set apart for "Conservation Park" and vested in the Authority, is cancelled.

(2) Reserve No. 41864, classified as of Class C, containing 5 998.400 0 hectares as shown on Reserve Diagram No. 984, set apart for "Conservation Park" and vested in the Authority, is cancelled.

(3) Reserve No. 30082, classified as of Class A, containing 606 597.000 0 hectares or thereabouts, set apart for "National Park" and vested in the Authority is amended —

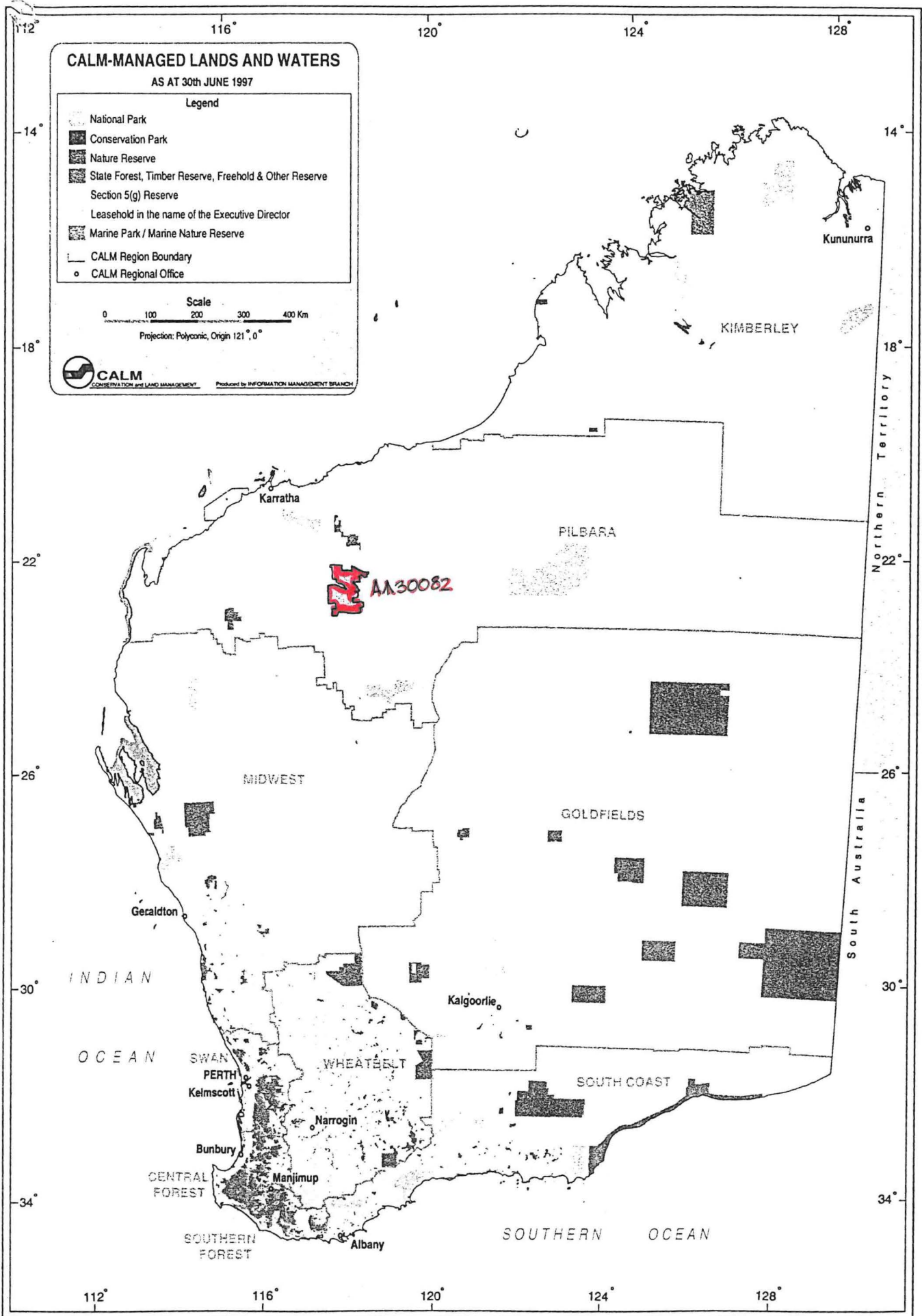
- (a) by including the land referred to in subsection (1);
- (b) by including the land referred to in subsection (2); and
- (c) by including a portion of Crown land comprising 4 490.000 0 hectares, being Gregory Location 94 and Windell Location 133, as shown bordered pink on Miscellaneous Diagram No. 337,

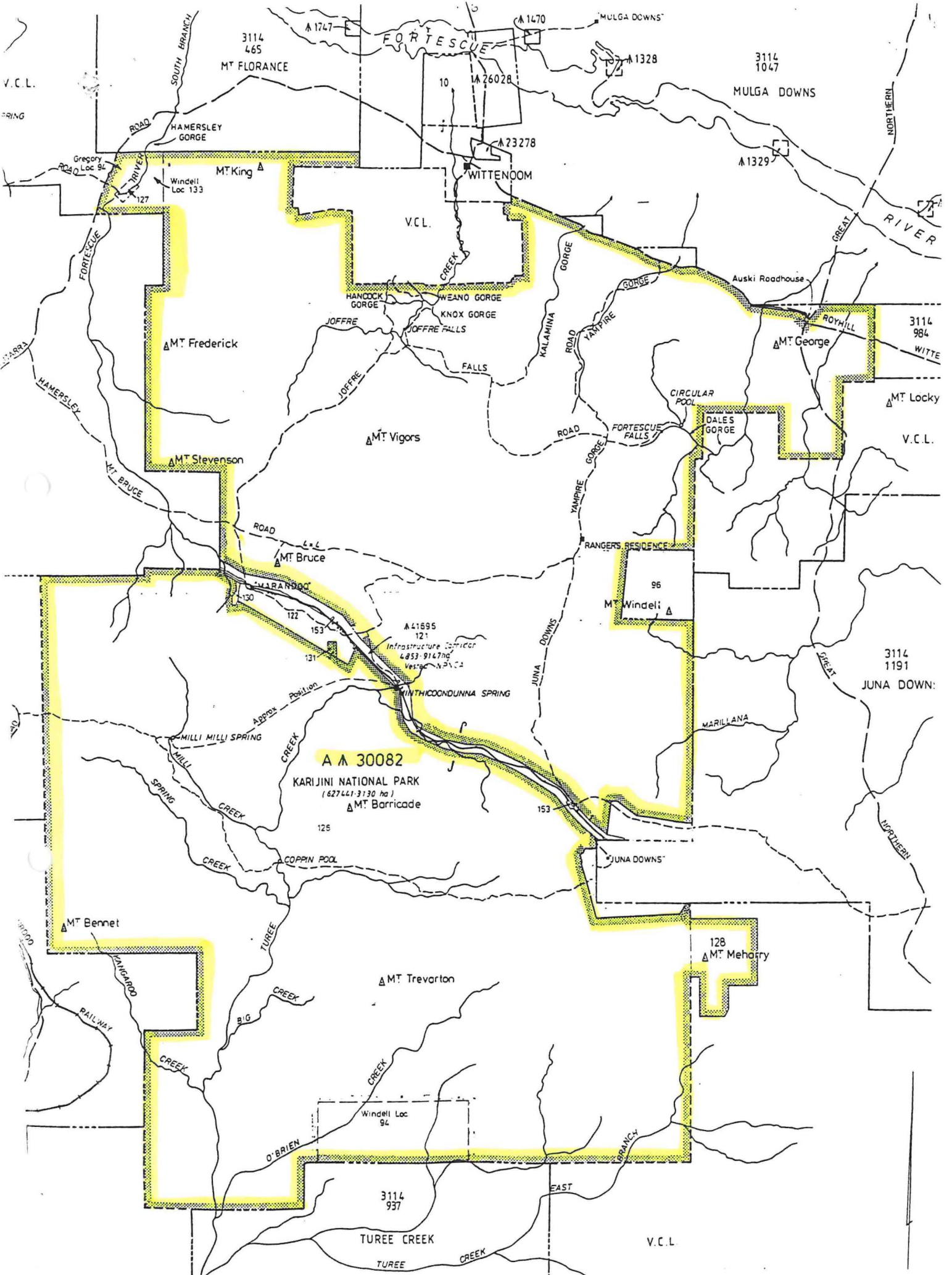
so that the reserve is comprised of an area of 627 444.785 6 hectares or thereabouts.

**Reserve No. 15061 in the Shire of Kojonup**

16. The purpose of Reserve No. 15061, classified as of Class A, containing 16.187 4 hectares, set apart for "Preservation of Indigenous Flora" and vested in the Authority, is changed to "Conservation of Flora and Fauna".

11. (i) The following reserves on Public Plan: Rockingham NE 1:25,000 are cancelled—
- (a) Class "C" Reserve 42238 (Cockburn Sound Locations 4020 and 4021) "Conservation of Flora and Fauna".
  - (b) Class "A" Reserve 31893 (Cockburn Sound Location 2992) "Conservation of Flora and Fauna".
  - (c) Class "C" Reserve 42237 (Cockburn Sound Location 4019) "Conservation of Flora and Fauna".
  - (d) Class "A" Reserve 31894 (Cockburn Sound Location 2988) "Conservation of Flora and Fauna".
- (ii) Class "A" Reserve 24204 (Cockburn Sound Location 3050) "Conservation of Flora and Fauna" is amended to include Locations 4020, 4021, 2992, 4019 and 2988 with its area being increased to 4.0598 hectares.  
Public Plan: Rockingham NE 1:25,000 and Peel (2) 03.29. File 929/928.
12. (i) Class "C" Reserve 42165 (Windell Location 94) "Conservation Park" is cancelled.  
Public Plan: Turee Creek 1:250,000.
- (ii) Class "C" Reserve 41864 (Windell Location 128) "Conservation Park" is cancelled.  
Public Plans: Newman and Roy Mill 1:250,000.
- (iii) Class "A" Reserve 30082 (Windell Locations 126, 127 and 131) "National Park" is amended to include Locations 128, 94 and 133 on Miscellaneous Diagram 337, with its area being increased to about 627444.7856 hectares.  
Public Plans: Mt Bruce, Roy Hill, Newman and Turee Creek 1:250,000h. File 3177/48 V6.
13. Class "A" Reserve 24029 (Swan Location 5543) "Kindergarten, Infant Health Clinic, Children's Playground and Park" is amended by the excision of that area now comprised in Location 11682 on Diagram 90839 with its area being reduced to 7620 square metres.  
Public Plan: Perth BG34 (2) 09.25. File 162/54.
14. (i) Class "C" Reserve 29149 (Melbourne District) "National Park" is cancelled.  
Public Plan: Cervantes 1:50,000.
- (ii) Class "C" Reserve 28393 (Melbourne Locations 4056, 4126 and 4127) "Preservation of Natural Formations (Pinnacles)" is cancelled.  
Public Plan: Cervantes 1:50,000.
- (iii) Class "A" Reserve 24522 (Melbourne District) "National Park and Water" is amended to comprise Locations 3953, 4048, 4056, 4126, 4127 and 4145 as shown on Reserve Plan 380 with its area being increased to 18 318.5304 hectares.  
Public Plan: Cervantes and Hill River 1:50,000 and Cervantes Regional File 2208/955V3.
15. (i) Class "C" Reserve 19413 (Murray Location 549) "Conservation of Flora and Fauna" is cancelled.
- (ii) Class "A" Reserve 40476 (Murray Location 1846) "Conservation of Flora and Fauna" is amended to include Location 549 with its area being increased to 69.6987 hectares.  
Public Plans: Wellard SE, Jarrahdale SW, Dwellingup NW and Pinjarra NE 1:25,000. File 570/988.
16. The purpose of Class "A" Reserve 25243 (Kojonup Location 8400) is changed to "Landscape Protection".  
Public Plan: Wagin SE and Woodanilling NE 1:25,000. File 8790/902.
17. Class "A" Reserve 16412 (Avon District) "Conservation of Flora and Fauna" is amended to comprise Location 29067 on Diagram 90711 in lieu of Location 21547 with its area being increased to 65.4857 hectares.  
Public Plan: Quajabin NW 1:25,000. File 4225/915.
18. Class "A" Reserve 900 (Victoria Locations 11144, 11275, 11276 and 11323) "Preservation of Natural Features" is amended by—
- (a) the revocation of the vesting held in the Mingenew Shire Council;
  - (b) the inclusion of Location 12004 with its area being increased to 753.8343 hectares.
  - (c) its purpose being changed to "Conservation Park".
- Reserve 900 is automatically vested in The National Parks and Nature Conservation Authority pursuant to the CALM Act 1984.  
Public Plan: Tardun 1:50,000. File 532/967.
19. The purpose of Class "A" Reserve 15061 (Kojonup Location 7175) is changed to "Conservation of Flora and Fauna". Reserve 15061 is automatically vested in the National Parks and Nature Conservation Authority pursuant to the CALM Act 1984.  
Public Plans: Boscabel SW and SE 1:25,000's File 611/13.

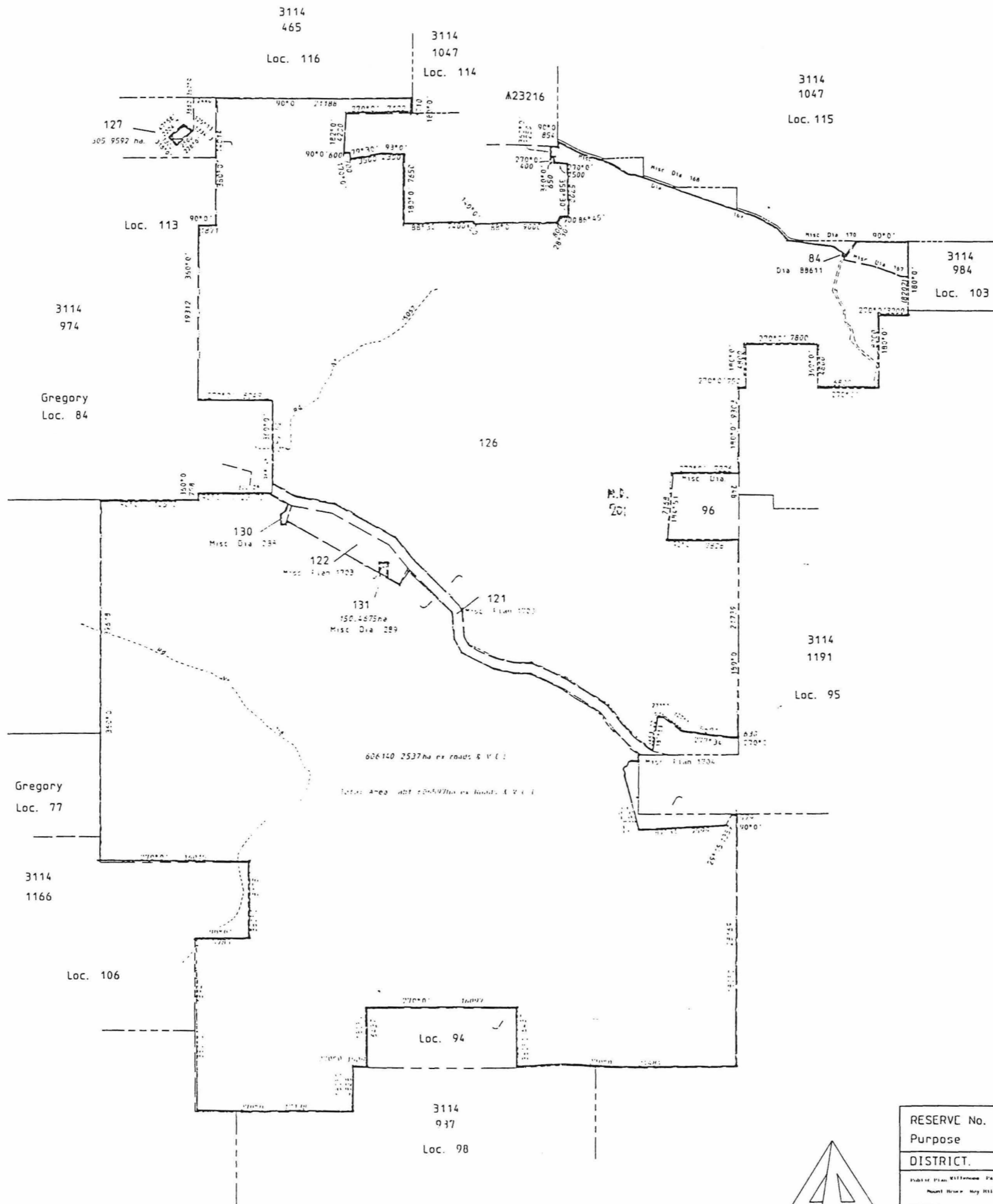




PART DOLA PLANS: MT BRUCE, ROY HILL,  
TUREE CREEK & NEWMAN

Dimension shown hereon are subject to survey  
 Supersees Reserve Plan 167 & Misc. Dia. 201  
 Includes former Locations 7, 50 & 119

317  
 163

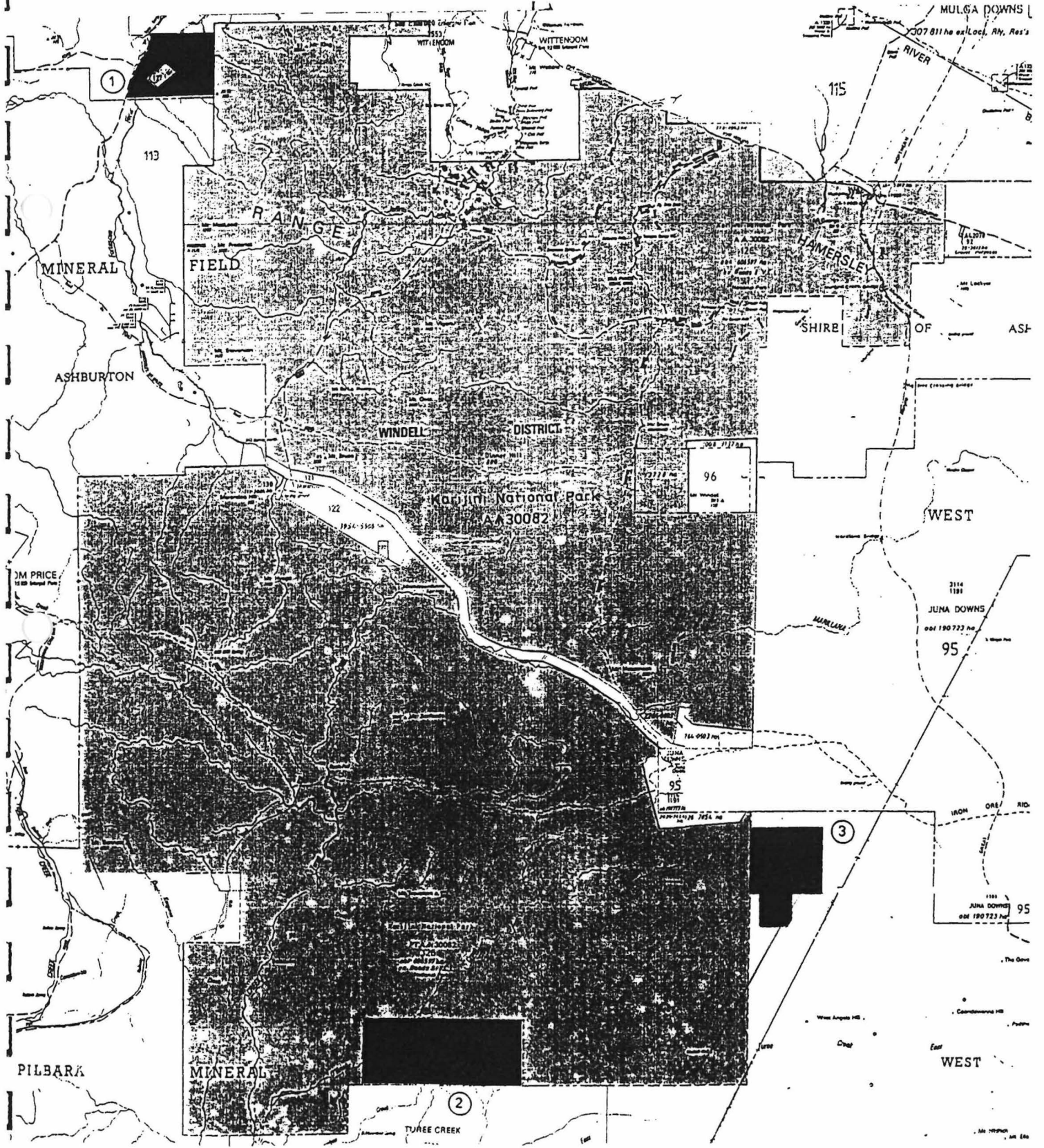


RESERVE No.	A 30082	Area.	abt 606597ha ex Roads & V. C. L.	FILE No.	3177 / 948 vol. 6
Purpose	National Park	SCALE	1: 250000	All amendments in outline	
DISTRICT.	WINDELL	SUBJECT TO SURVY			
Public Plan, Willemsoe, Parahorowangi & Papanui 1:100000 Point Bluff, Mt. Hutt, Meehan & Tapanui 1:250000		AMENDMENTS			
Reference	Date	Sheet	Page	Initials	Registered
Prepared by	11/1/1991				Registered
Checked	22/4/91				Registered
Approved	22/4/91				Registered
DEPT. OF LAND ADMINISTRATION					
RESERVE PLAN No. 333					

#

THE AMENDMENT OF CLASS A $\Delta$ 30082 TO INCLUDE 25  
 1/ GREGORY LOCATION 94 AND WINDELL LOCATION 133,  
 2/ CLASS C $\Delta$ 42165 (WINDELL LOCATION 94); AND  
 3/ CLASS C $\Delta$ 41864 (WINDELL LOCATION 128)  
 COLOURED RED HEREON

PUBLIC PLANS:- MT. BRUCE, ROY HILL, NEWMAN AND TUREE CREEK 1:250000:  
 CORR. 3177/48 Vol. 6  
 NOT TO SCALE

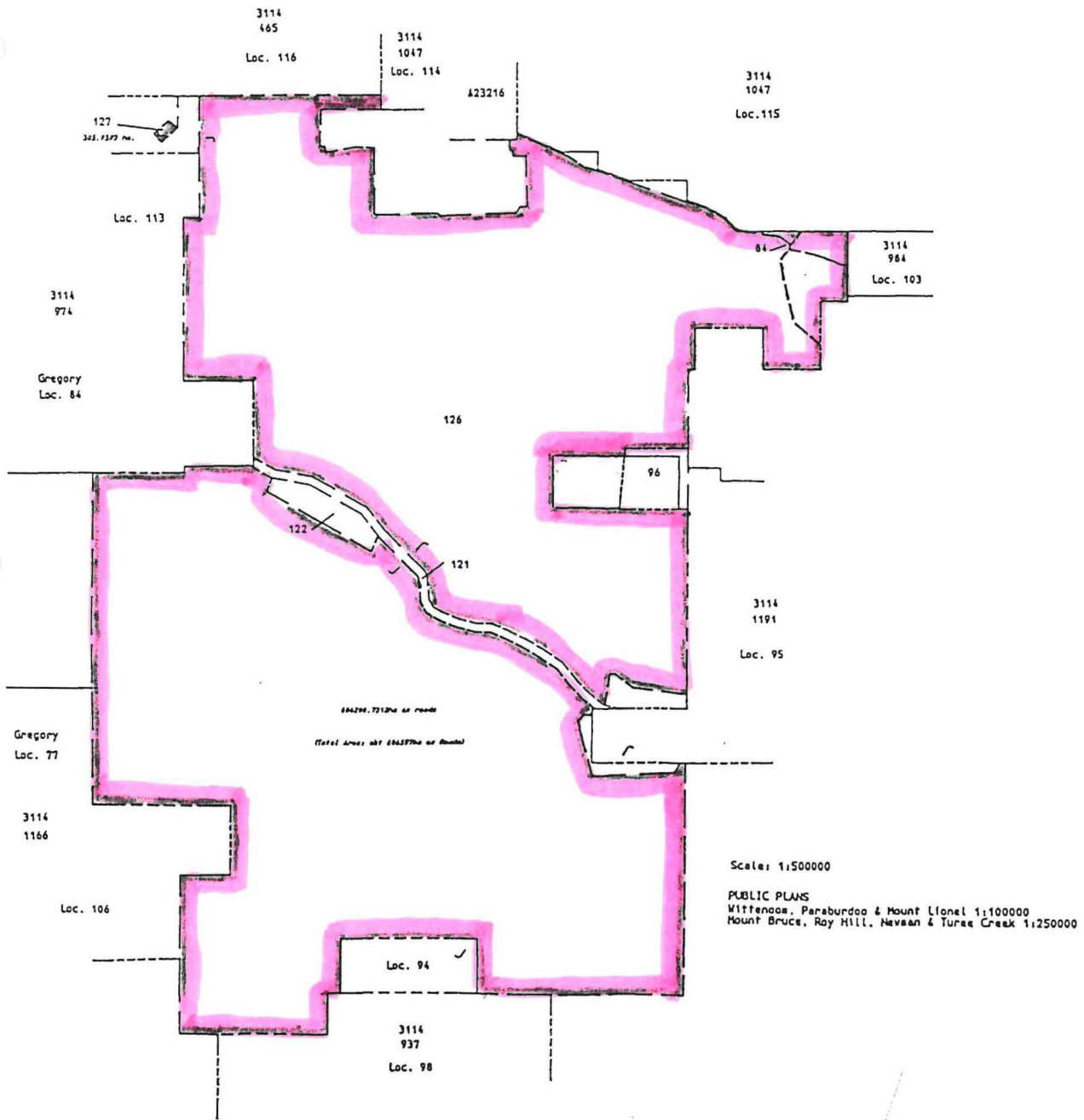


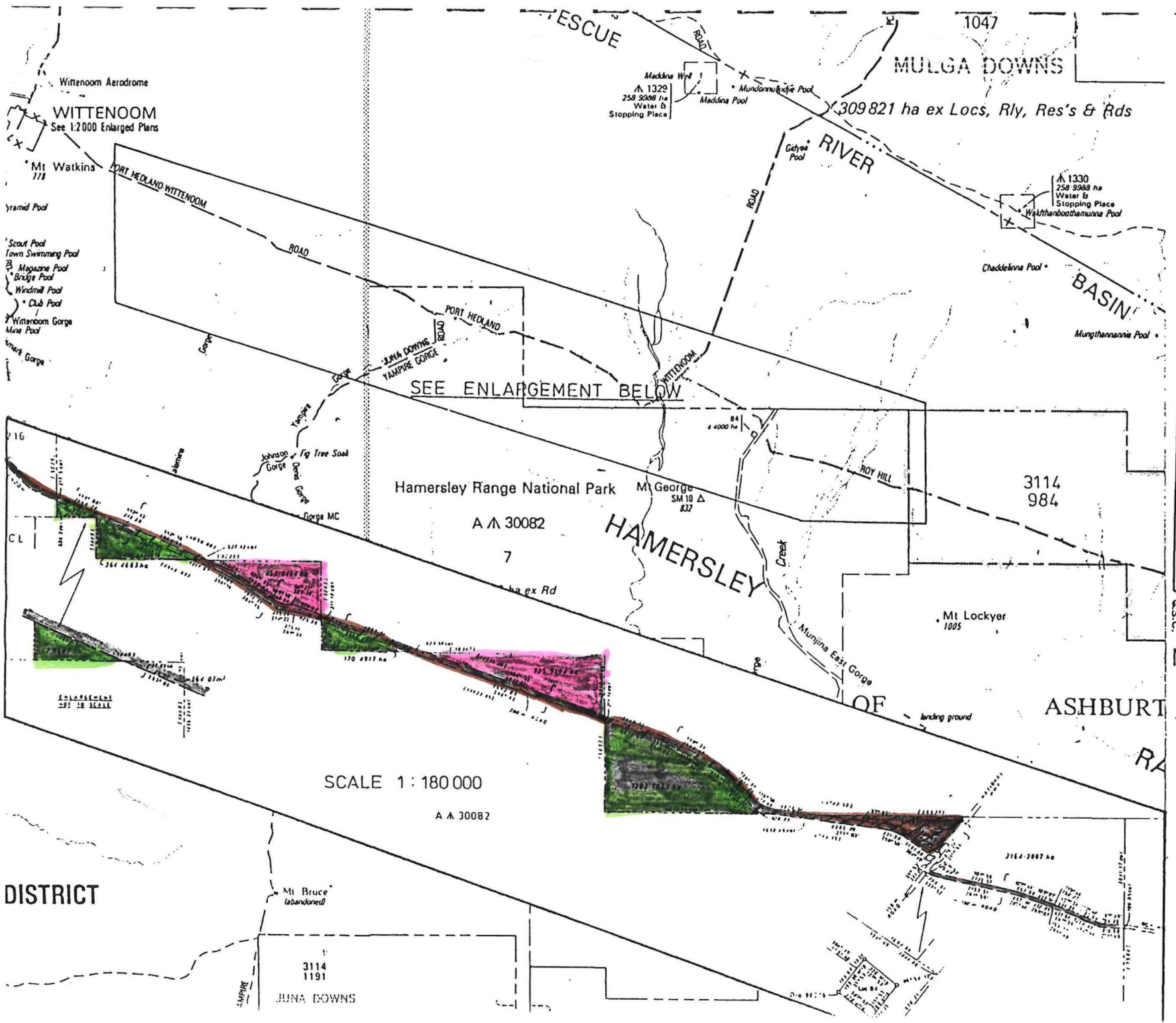
50  
30  
7

# PROPOSED BOUNDARY CHANGES TO AM30082 "NATIONAL PARK" AS SHOWN ON RESERVE PLAN 333

PUBLIC PLANS:- WITTENOOM, PARABURDOO & MOUNT LIONEL 1:100 000s  
& MOUNT BRUCE, ROY HILL, NEWMAN & TUREE CREEK 1:250 000s  
CORR. 3177/48 Vol. 6  
PILBARA DISTRICT

Excl  
da.



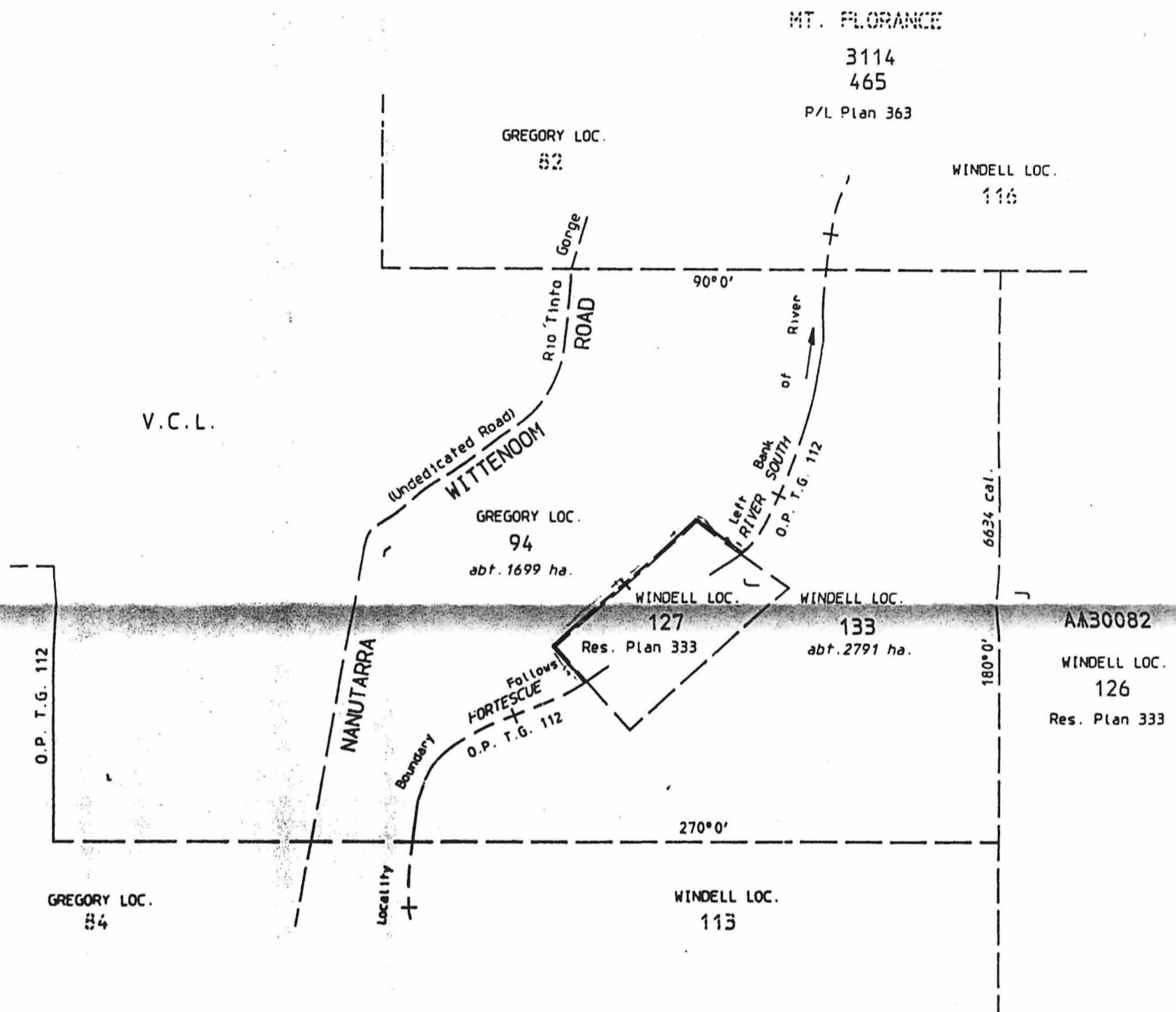


PUBLIC PLANS: ROY HILL AND MOUNT BRUCE 1:250 000  
 CORR 3117/1948 Vol 5  
 SCALE 1:250 000

BLACK FROM AA30082.  
 PROPOSED AMENDMENTS TO AA30082;  
 EXCISIONS COLOURED PINK AND BROWN,  
 ADDITIONS COLOURED GREEN.

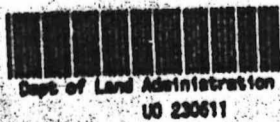
2/10/50  
 7

Dimensions shown hereon are SUBJECT TO SURVEY



HAMERSLEY

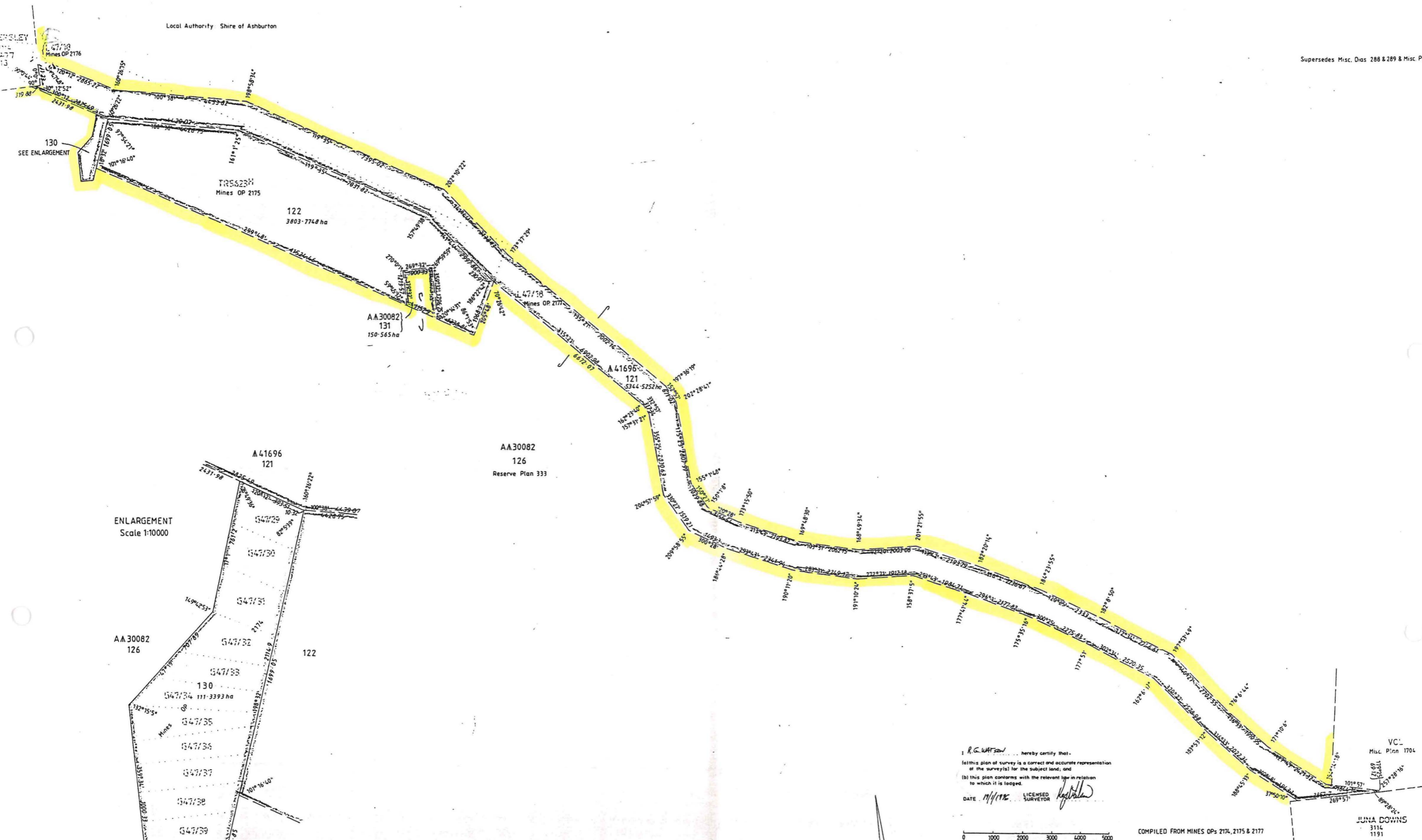
3114  
974  
P/L Plan 209



Water lines shown hereon do not necessarily depict an exact cadastral boundary



<b>GREGORY LOC. 94 AND WINDELL LOC. 133</b>		FILE No. 3177/948 v6
		SCALE 1:50000 All measurements in metres
<b>DISTRICT. GREGORY / WINDELL</b>		Gazetted ..... Page.....
Public Plan MT. BRUCE 250000 & WITTENOOM 100000		Recorded on Public Plan .....
P.P. Reference 699/949		Registered ..... <i>Taylor</i>
Reference AREAS BY PLANNING Page .....		On Key Plan MT. BRUCE 250000
Prepared by D. TAYLOR Date 20.08.92		DEPT. OF LAND ADMINISTRATION <b>MISCELLANEOUS DIAGRAM No. 337</b>
Checked <i>[Signature]</i> Date 20.8.1992		
Approved <i>[Signature]</i> Date 20.8.92		
SUBJECT TO SURVEY		
AMENDMENTS		



I, R. G. WATSON, hereby certify that:  
 (a) this plan of survey is a correct and accurate representation of the survey(s) for the subject land; and  
 (b) this plan conforms with the relevant law in relation to which it is lodged.  
 DATE 11/1/1982 LICENSED SURVEYOR *R. G. Watson*

0 1000 2000 3000 4000 5000

COMPILED FROM MINES OPs 2174, 2175 & 2177

VC.  
 Misc. Plan 1704  
 1170  
 1171  
 1172  
 1173  
 1174  
 1175  
 1176  
 1177  
 1178  
 1179  
 1180  
 1181  
 1182  
 1183  
 1184  
 1185  
 1186  
 1187  
 1188  
 1189  
 1190  
 1191  
 1192  
 1193  
 1194  
 1195  
 1196  
 1197  
 1198  
 1199  
 1200  
 1201  
 1202  
 1203  
 1204  
 1205  
 1206  
 1207  
 1208  
 1209  
 1210  
 1211  
 1212  
 1213  
 1214  
 1215  
 1216  
 1217  
 1218  
 1219  
 1220  
 1221  
 1222  
 1223  
 1224  
 1225  
 1226  
 1227  
 1228  
 1229  
 1230  
 1231  
 1232  
 1233  
 1234  
 1235  
 1236  
 1237  
 1238  
 1239  
 1240  
 1241  
 1242  
 1243  
 1244  
 1245  
 1246  
 1247  
 1248  
 1249  
 1250  
 1251  
 1252  
 1253  
 1254  
 1255  
 1256  
 1257  
 1258  
 1259  
 1260  
 1261  
 1262  
 1263  
 1264  
 1265  
 1266  
 1267  
 1268  
 1269  
 1270  
 1271  
 1272  
 1273  
 1274  
 1275  
 1276  
 1277  
 1278  
 1279  
 1280  
 1281  
 1282  
 1283  
 1284  
 1285  
 1286  
 1287  
 1288  
 1289  
 1290  
 1291  
 1292  
 1293  
 1294  
 1295  
 1296  
 1297  
 1298  
 1299  
 1300  
 1301  
 1302  
 1303  
 1304  
 1305  
 1306  
 1307  
 1308  
 1309  
 1310  
 1311  
 1312  
 1313  
 1314  
 1315  
 1316  
 1317  
 1318  
 1319  
 1320  
 1321  
 1322  
 1323  
 1324  
 1325  
 1326  
 1327  
 1328  
 1329  
 1330  
 1331  
 1332  
 1333  
 1334  
 1335  
 1336  
 1337  
 1338  
 1339  
 1340  
 1341  
 1342  
 1343  
 1344  
 1345  
 1346  
 1347  
 1348  
 1349  
 1350  
 1351  
 1352  
 1353  
 1354  
 1355  
 1356  
 1357  
 1358  
 1359  
 1360  
 1361  
 1362  
 1363  
 1364  
 1365  
 1366  
 1367  
 1368  
 1369  
 1370  
 1371  
 1372  
 1373  
 1374  
 1375  
 1376  
 1377  
 1378  
 1379  
 1380  
 1381  
 1382  
 1383  
 1384  
 1385  
 1386  
 1387  
 1388  
 1389  
 1390  
 1391  
 1392  
 1393  
 1394  
 1395  
 1396  
 1397  
 1398  
 1399  
 1400  
 1401  
 1402  
 1403  
 1404  
 1405  
 1406  
 1407  
 1408  
 1409  
 1410  
 1411  
 1412  
 1413  
 1414  
 1415  
 1416  
 1417  
 1418  
 1419  
 1420  
 1421  
 1422  
 1423  
 1424  
 1425  
 1426  
 1427  
 1428  
 1429  
 1430  
 1431  
 1432  
 1433  
 1434  
 1435  
 1436  
 1437  
 1438  
 1439  
 1440  
 1441  
 1442  
 1443  
 1444  
 1445  
 1446  
 1447  
 1448  
 1449  
 1450  
 1451  
 1452  
 1453  
 1454  
 1455  
 1456  
 1457  
 1458  
 1459  
 1460  
 1461  
 1462  
 1463  
 1464  
 1465  
 1466  
 1467  
 1468  
 1469  
 1470  
 1471  
 1472  
 1473  
 1474  
 1475  
 1476  
 1477  
 1478  
 1479  
 1480  
 1481  
 1482  
 1483  
 1484  
 1485  
 1486  
 1487  
 1488  
 1489  
 1490  
 1491  
 1492  
 1493  
 1494  
 1495  
 1496  
 1497  
 1498  
 1499  
 1500  
 1501  
 1502  
 1503  
 1504  
 1505  
 1506  
 1507  
 1508  
 1509  
 1510  
 1511  
 1512  
 1513  
 1514  
 1515  
 1516  
 1517  
 1518  
 1519  
 1520  
 1521  
 1522  
 1523  
 1524  
 1525  
 1526  
 1527  
 1528  
 1529  
 1530  
 1531  
 1532  
 1533  
 1534  
 1535  
 1536  
 1537  
 1538  
 1539  
 1540  
 1541  
 1542  
 1543  
 1544  
 1545  
 1546  
 1547  
 1548  
 1549  
 1550  
 1551  
 1552  
 1553  
 1554  
 1555  
 1556  
 1557  
 1558  
 1559  
 1560  
 1561  
 1562  
 1563  
 1564  
 1565  
 1566  
 1567  
 1568  
 1569  
 1570  
 1571  
 1572  
 1573  
 1574  
 1575  
 1576  
 1577  
 1578  
 1579  
 1580  
 1581  
 1582  
 1583  
 1584  
 1585  
 1586  
 1587  
 1588  
 1589  
 1590  
 1591  
 1592  
 1593  
 1594  
 1595  
 1596  
 1597  
 1598  
 1599  
 1600  
 1601  
 1602  
 1603  
 1604  
 1605  
 1606  
 1607  
 1608  
 1609  
 1610  
 1611  
 1612  
 1613  
 1614  
 1615  
 1616  
 1617  
 1618  
 1619  
 1620  
 1621  
 1622  
 1623  
 1624  
 1625  
 1626  
 1627  
 1628  
 1629  
 1630  
 1631  
 1632  
 1633  
 1634  
 1635  
 1636  
 1637  
 1638  
 1639  
 1640  
 1641  
 1642  
 1643  
 1644  
 1645  
 1646  
 1647  
 1648  
 1649  
 1650  
 1651  
 1652  
 1653  
 1654  
 1655  
 1656  
 1657  
 1658  
 1659  
 1660  
 1661  
 1662  
 1663  
 1664  
 1665  
 1666  
 1667  
 1668  
 1669  
 1670  
 1671  
 1672  
 1673  
 1674  
 1675  
 1676  
 1677  
 1678  
 1679  
 1680  
 1681  
 1682  
 1683  
 1684  
 1685  
 1686  
 1687  
 1688  
 1689  
 1690  
 1691  
 1692  
 1693  
 1694  
 1695  
 1696  
 1697  
 1698  
 1699  
 1700  
 1701  
 1702  
 1703  
 1704  
 1705  
 1706  
 1707  
 1708  
 1709  
 1710  
 1711  
 1712  
 1713  
 1714  
 1715  
 1716  
 1717  
 1718  
 1719  
 1720  
 1721  
 1722  
 1723  
 1724  
 1725  
 1726  
 1727  
 1728  
 1729  
 1730  
 1731  
 1732  
 1733  
 1734  
 1735  
 1736  
 1737  
 1738  
 1739  
 1740  
 1741  
 1742  
 1743  
 1744  
 1745  
 1746  
 1747  
 1748  
 1749  
 1750  
 1751  
 1752  
 1753  
 1754  
 1755  
 1756  
 1757  
 1758  
 1759  
 1760  
 1761  
 1762  
 1763  
 1764  
 1765  
 1766  
 1767  
 1768  
 1769  
 1770  
 1771  
 1772  
 1773  
 1774  
 1775  
 1776  
 1777  
 1778  
 1779  
 1780  
 1781  
 1782  
 1783  
 1784  
 1785  
 1786  
 1787  
 1788  
 1789  
 1790  
 1791  
 1792  
 1793  
 1794  
 1795  
 1796  
 1797  
 1798  
 1799  
 1800  
 1801  
 1802  
 1803  
 1804  
 1805  
 1806  
 1807  
 1808  
 1809  
 1810  
 1811  
 1812  
 1813  
 1814  
 1815  
 1816  
 1817  
 1818  
 1819  
 1820  
 1821  
 1822  
 1823  
 1824  
 1825  
 1826  
 1827  
 1828  
 1829  
 1830  
 1831  
 1832  
 1833  
 1834  
 1835  
 1836  
 1837  
 1838  
 1839  
 1840  
 1841  
 1842  
 1843  
 1844  
 1845  
 1846  
 1847  
 1848  
 1849  
 1850  
 1851  
 1852  
 1853  
 1854  
 1855  
 1856  
 1857  
 1858  
 1859  
 1860  
 1861  
 1862  
 1863  
 1864  
 1865  
 1866  
 1867  
 1868  
 1869  
 1870  
 1871  
 1872  
 1873  
 1874  
 1875  
 1876  
 1877  
 1878  
 1879  
 1880  
 1881  
 1882  
 1883  
 1884  
 1885  
 1886  
 1887  
 1888  
 1889  
 1890  
 1891  
 1892  
 1893  
 1894  
 1895  
 1896  
 1897  
 1898  
 1899  
 1900  
 1901  
 1902  
 1903  
 1904  
 1905  
 1906  
 1907  
 1908  
 1909  
 1910  
 1911  
 1912  
 1913  
 1914  
 1915  
 1916  
 1917  
 1918  
 1919  
 1920  
 1921  
 1922  
 1923  
 1924  
 1925  
 1926  
 1927  
 1928  
 1929  
 1930  
 1931  
 1932  
 1933  
 1934  
 1935  
 1936  
 1937  
 1938  
 1939  
 1940  
 1941  
 1942  
 1943  
 1944  
 1945  
 1946  
 1947  
 1948  
 1949  
 1950  
 1951  
 1952  
 1953  
 1954  
 1955  
 1956  
 1957  
 1958  
 1959  
 1960  
 1961  
 1962  
 1963  
 1964  
 1965  
 1966  
 1967  
 1968  
 1969  
 1970  
 1971  
 1972  
 1973  
 1974  
 1975  
 1976  
 1977  
 1978  
 1979  
 1980  
 1981  
 1982  
 1983  
 1984  
 1985  
 1986  
 1987  
 1988  
 1989  
 1990  
 1991  
 1992  
 1993  
 1994  
 1995  
 1996  
 1997  
 1998  
 1999  
 2000  
 2001  
 2002  
 2003  
 2004  
 2005  
 2006  
 2007  
 2008  
 2009  
 2010  
 2011  
 2012  
 2013  
 2014  
 2015  
 2016  
 2017  
 2018  
 2019  
 2020  
 2021  
 2022  
 2023  
 2024  
 2025  
 2026  
 2027  
 2028  
 2029  
 2030  
 2031  
 2032  
 2033  
 2034  
 2035  
 2036  
 2037  
 2038  
 2039  
 2040  
 2041  
 2042  
 2043  
 2044  
 2045  
 2046  
 2047  
 2048  
 2049  
 2050  
 2051  
 2052  
 2053  
 2054  
 2055  
 2056  
 2057  
 2058  
 2059  
 2060  
 2061  
 2062  
 2063  
 2064  
 2065  
 2066  
 2067  
 2068  
 2069  
 2070  
 2071  
 2072  
 2073  
 2074  
 2075  
 2076  
 2077  
 2078  
 2079  
 2080  
 2081  
 2082  
 2083  
 2084  
 2085  
 2086  
 2087  
 2088  
 2089  
 2090  
 2091  
 2092  
 2093  
 2094  
 2095  
 2096  
 2097  
 2098  
 2099  
 2100  
 2101  
 2102  
 2103  
 2104  
 2105  
 2106  
 2107  
 2108  
 2109  
 2110  
 2111  
 2112  
 2113  
 2114  
 2115  
 2116  
 2117  
 2118  
 2119  
 2120  
 2121  
 2122  
 2123  
 2124  
 2125  
 2126  
 2127  
 2128  
 2129  
 2130  
 2131  
 2132  
 2133  
 2134  
 2135  
 2136  
 2137  
 2138  
 2139  
 2140  
 2141  
 2142  
 2143  
 2144  
 2145  
 2146  
 2147  
 2148  
 2149  
 2150  
 2151  
 2152  
 2153  
 2154  
 2155  
 2156  
 2157  
 2158  
 2159  
 2160  
 2161  
 2162  
 2163  
 2164  
 2165  
 2166  
 2167  
 2168  
 2169  
 2170  
 2171  
 2172  
 2173  
 2174  
 2175  
 2176  
 2177  
 2178  
 2179  
 2180  
 2181  
 2182  
 2183  
 2184  
 2185  
 2186  
 2187  
 2188  
 2189  
 2190  
 2191  
 2192  
 2193  
 2194  
 2195  
 2196  
 2197  
 2198  
 2199  
 2200  
 2201  
 2202  
 2203  
 2204  
 2205  
 2206  
 2207  
 2208  
 2209  
 2210  
 2211  
 2212  
 2213  
 2214  
 2215  
 2216  
 2217  
 2218  
 2219  
 2220  
 2221  
 2222  
 2223  
 2224  
 2225  
 2226  
 2227  
 2228  
 2229  
 2230  
 2231  
 2232  
 2233  
 2234  
 2235  
 2236  
 2237  
 2238  
 2239  
 2240  
 2241  
 2242  
 2243  
 2244  
 2245  
 2246  
 2247  
 2248  
 2249  
 2250  
 2251  
 2252  
 2253  
 2254  
 2255  
 2256  
 2257  
 2258  
 2259  
 2260  
 2261  
 2262  
 2263  
 2264  
 2265  
 2266  
 2267  
 2268  
 2269  
 2270  
 2271  
 2272  
 2273  
 2274  
 2275  
 2276  
 2277  
 2278  
 2279  
 2280  
 2281  
 2282  
 2283  
 2284  
 2285  
 2286  
 2287  
 2288  
 2289  
 2290  
 2291  
 2292  
 2293  
 2294  
 2295  
 2296  
 2297  
 2298  
 2299  
 2300  
 2301  
 2302  
 2303  
 2304  
 2305  
 2306  
 2307  
 2308  
 2309  
 2310  
 2311  
 2312  
 2313  
 2314  
 2315  
 2316  
 2317  
 2318  
 2319  
 2320  
 2321  
 2322  
 2323  
 2324  
 2325  
 2326  
 2327  
 2328  
 2329  
 2330  
 2331  
 2332  
 2333  
 2334  
 2335  
 2336  
 2337  
 2338  
 2339  
 2340  
 2341  
 2342  
 2343  
 2344  
 2345  
 2346  
 2347  
 2348  
 2349  
 2350  
 2351  
 2352  
 2353  
 2354  
 2355  
 2356  
 2357  
 2358  
 2359  
 2360  
 2361  
 2362  
 2363  
 2364  
 2365  
 2366  
 2367  
 2368  
 2369  
 2370  
 2371  
 2372  
 2373  
 2374  
 2375  
 2376  
 2377  
 2378  
 2379  
 2380  
 2381  
 2382  
 2383  
 2384  
 2385  
 2386  
 2387  
 2388  
 2389  
 2390  
 2391  
 2392  
 2393  
 2394  
 2395  
 2396  
 2397  
 2398  
 2399  
 2400  
 2401  
 2402  
 2403  
 2404  
 2405  
 2406  
 2407  
 2408  
 2409  
 2410  
 2411  
 2412  
 2413  
 2414  
 2415  
 2416  
 2417  
 2418  
 2419  
 2420  
 2421  
 2422  
 2423  
 2424  
 2425  
 2426  
 2427  
 2428  
 2429  
 2430  
 2431  
 2432  
 2433  
 2434  
 2435  
 2436  
 2437  
 2438  
 2439  
 2440  
 2441  
 2442  
 2443  
 2444  
 2445  
 2446  
 2447  
 2448  
 2449  
 2450  
 2451  
 2452  
 2453  
 2454  
 2455  
 2456  
 2457  
 2458  
 2459  
 2460  
 2461  
 2462  
 2463  
 2464  
 2465  
 2466  
 2467  
 2468  
 2469  
 2470