

## RESERVE ACTION SHEET - CONSERVATION RESERVES

**RESERVE No. 41775 & 22697**

**REASON FOR ACTION**

The creation of a 5(1)(h) reserve for the purpose 'Conservation, Navigation, Communication, Meteorology and Survey' and the creation of a new nature reserve for the purpose 'Conservation of Flora and Fauna', both vested in the Conservation Commission.

Area: 0.24 & 14.03 hectares

Due to increasing use of satellite aided navigation and AMSA'S desire to rationalise it's property holdings the Commonwealth has been divesting properties containing lighthouses and marine navigational aids. Reserve 41775 on Browse Island is a former AMSA property which will be leased back to AMSA to permit continued operation of lighthouse facilities. The addition of 9.32 ha to reserve 22697 on Browse Island is a former AMSA property, which will now be managed as a nature reserve.

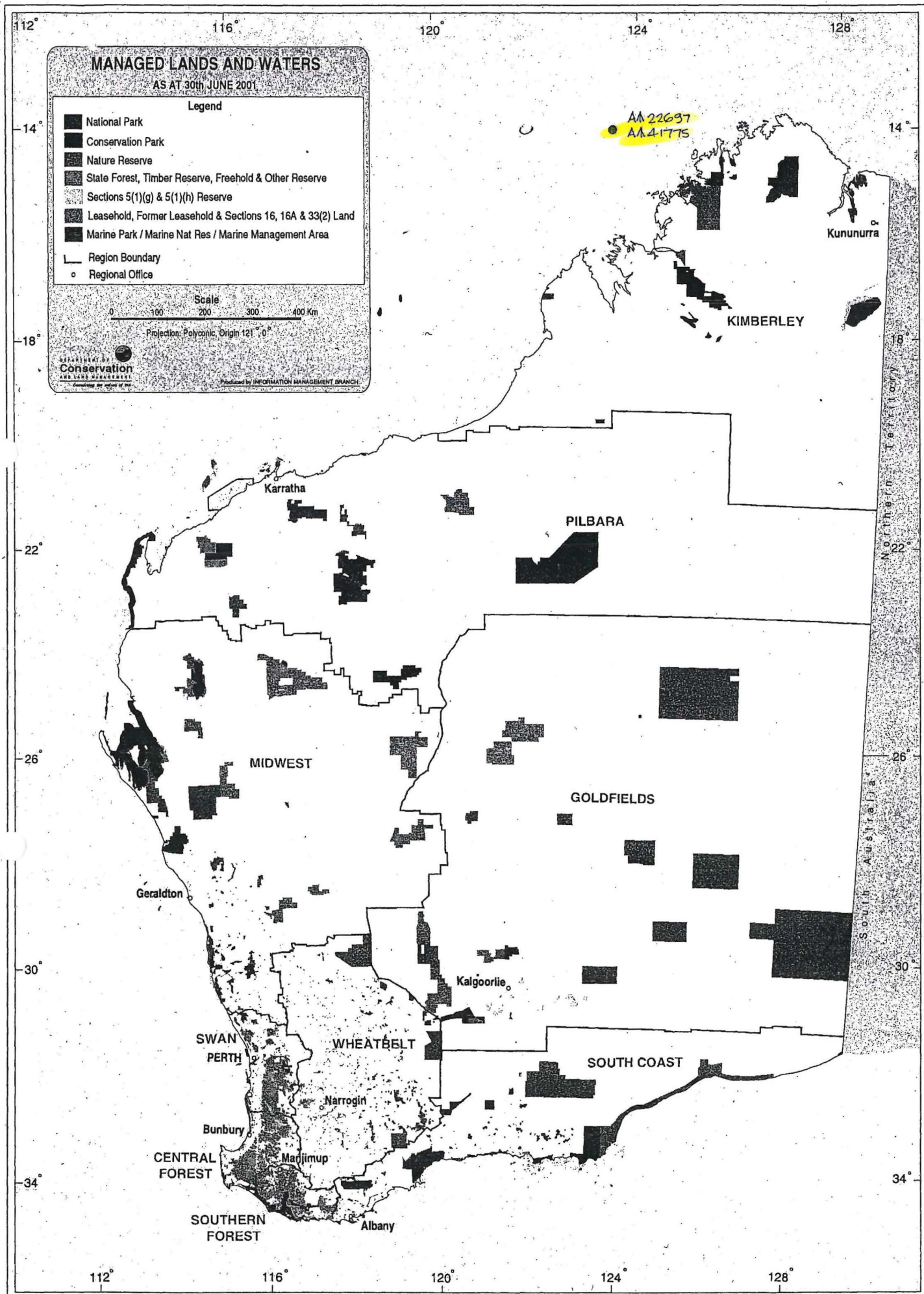
- Date of DOLA's advice: 4 December 2000      See folio: 224,216
- Plans at folios: 228,227,226,225

OFFICER	ACTION		
1	<b>CONSERVATION ESTATE OFFICER</b> <i>LS</i>	<ul style="list-style-type: none"> <li>- Fill in above details</li> <li>- Attach copies of DOLA's advice to file</li> </ul> Send copies of advice & maps to: <ul style="list-style-type: none"> <li>- Lisa Wright, Woodvale</li> <li>- Regional Manager, Kimberley</li> </ul> Recommended IUCN classification:	_____ _____ _____ _____ _____ _____
2	<b>LAND ACQUISITIONS OFFICER</b>	To note:	_____
3	<b>MANAGER, PLANNING &amp; VISITOR SERVICES</b>	To note & approve IUCN classification:	_____
4	<b>DIRECTOR, NATURE CONSERVATION/ NATIONAL PARKS</b>	To note:	_____
5	<b>INDEX CLERK, RECORDS</b>	To note:	_____
6	<b>CONSERVATION ESTATE OFFICER</b>	Attach copy of Reserve Details to inside cover of new file	_____

**Customer Advices for Reserve Actions**  
**1/08/2001 - 31/08/2001**

**Shire of Wyndham-East Kimberley 1/08/2001 - 31/08/2001**

Reserve No.	Land Description	DOLA File No.	Volume/Folio	Action	Document No.	Registered	Street Name	Area	Public Plans
41775		02153-1989-01RO	3081-95	Management Order to Conservation Commission of Western Australia C/- Department of Conservation and Land Management Locked Bag 104 Bentley Delivery Centre Como W.A 6152 for the designated purpose of "Conservation, Navigation, Communication, Meteorology and Survey"	H651910	23/01/2001		0.24 Ha	Montague Sound 1:250 000



# MANAGED LANDS AND WATERS

AS AT 30th JUNE 2001

## Legend

- National Park
- Conservation Park
- Nature Reserve
- State Forest, Timber Reserve, Freehold & Other Reserve
- Sections 5(1)(g) & 5(1)(h) Reserve
- Leasehold, Former Leasehold & Sections 16, 16A & 33(2) Land
- Marine Park / Marine Nat Res / Marine Management Area
- Region Boundary
- Regional Office

Scale  
0 100 200 300 400 Km

Projection: Polyconic, Origin 121° 0'



Produced by INFORMATION MANAGEMENT BRANCH

AA 22637  
AA 41775

Kununurra

KIMBERLEY

PILBARA

MIDWEST

GOLDFIELDS

Geraldton

Kalgoorlie

SWAN  
PERTH

WHEATBELT

SOUTH COAST

Narrogin

Bunbury

CENTRAL  
FOREST

Manjimup

SOUTHERN  
FOREST

Albany

Northern Territory

South Australia

124° 30'

45'

670000mE

68

69

70

71

mN

44

43

42

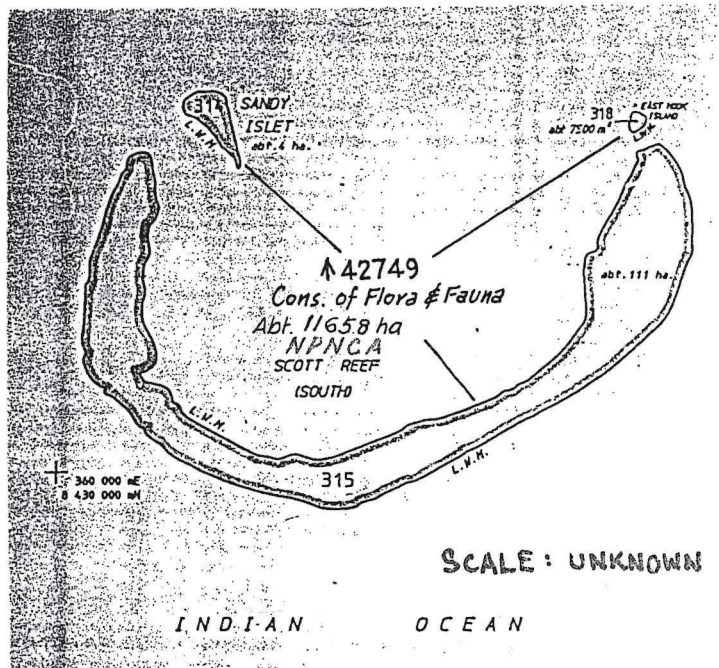
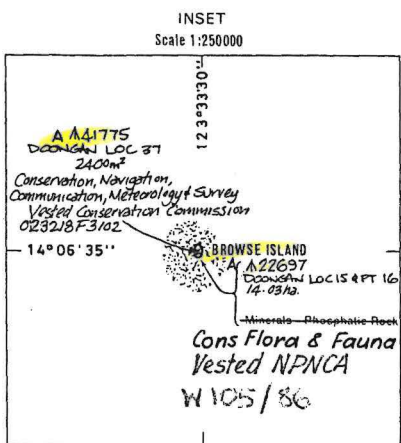
41

40

T.N.

32'

39



INDIAN

OCEAN

SOUTH M  
ISLAN

Robroy Reefs

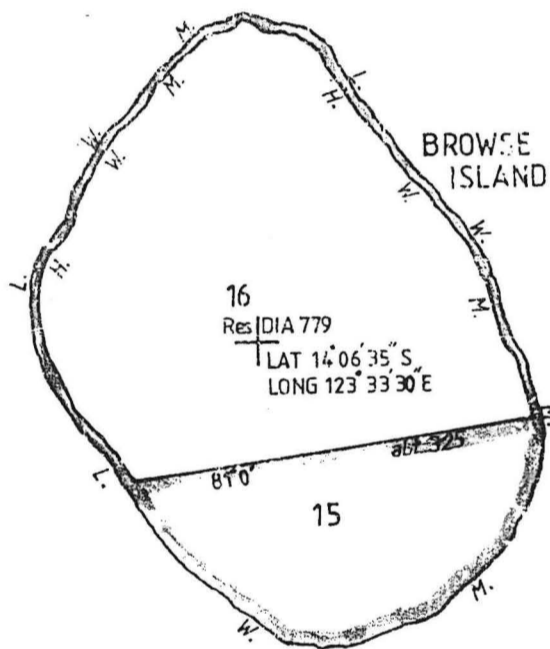
ALBERT ISLANDS

SUFFREN

PART DOVA PLAD.  
MONTAQUE SOUND. (SG 51-12)

SCALE 1:250000.

INDIAN




OCEAN

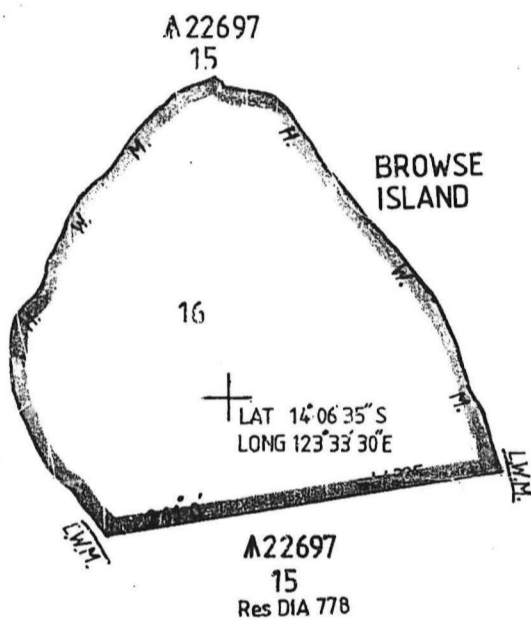
INFORMATION SHOWN DERIVED FROM HYDROGRAPHIC CHARTS AUS 319 AND BA 1242.

SURROUNDING REEFS AND ROCKS ARE INCLUDED IN A 22697

THE WATER LINES SHOWN ON THIS DIAGRAM DO NOT NECESSARILY DEPICT EXACT CADASTRAL BOUNDARIES. BOUNDARIES EXTEND TO LOW WATER MARK.

RESERVE No. 22697		Purpose Conservation of Flora and Fauna				Area abt 4.71 ha			
CORR. No. 2978 / 15 V.2				AMENDMENTS			SCALE 1:5000		
DISTRICT DOONGAN				Gaz	Page	Intls	Gaz	Page	Intls
PUBLIC PLAN MONTAGUE SOUND								GAZETTED	PAG
1:250 000								Recorded on Public Plan	
PREPARED BY J.A.V. MEERTENS								Registered 12.5.89	
CAL BOOK REF. 9 Page 69								On Key Plan	
EXAMINED <i>P. J. van der ...</i> 12.5.89									
APPROVED <i>W. J. van der ...</i> 12.5.89									
1/ MANAGER STATUTORY AMENDMENTS		SUBJECT TO SURVEY						RESERVE DIAGRAM No. 778	

INDIAN



OCEAN

INFORMATION SHOWN DERIVED FROM HYDROGRAPHIC CHARTS AUS 319 AND BA 1242.  
 THE WATERLINES SHOWN ON THIS DIAGRAM DO NOT NECESSARILY DEPICT EXACT CADASTRAL BOUNDARIES.  
 BOUNDARIES EXTEND TO HIGH WATERMARK.

<b>RESERVE No.</b> 2978 / 15 V2		<b>Purpose</b> Marine Navigation Aid Purposes				<b>Area</b> abt 9.56 ha	
<b>CORP. No.</b> 2978 / 15 V2		<b>AMENDMENTS</b>				<b>SCALE</b> 1:5000	
<b>DISTRICT</b> DOONGAN		<b>Gaz</b>	<b>Page</b>	<b>Intls</b>	<b>Gaz</b>	<b>Page</b>	<b>Intls</b>
<b>PUBLIC PLAN</b> MONTAGUE SOUND 1:250 000							
<b>PREPARED BY</b> J.A.M. MEERTENS							
<b>CAL. BOOK REF</b> 9 Page 69							
<b>EXAMINED</b> <i>[Signature]</i> 18.5.89							
<b>APPROVED</b> <i>[Signature]</i> 12.5.89							
<b>4/ MANAGER STATUTORY AMENDMENTS</b>							
		<b>SUBJECT TO SURVEY</b>				<b>RESERVE DIAGRAM No. 779</b>	