

RESERVE ACTION SHEET - CONSERVATION RESERVES

RESERVE No. 46233 (Lawley River National Park)

REASON FOR ACTION

- Creation of a new class A reserve with a Management Order issued to the Conservation Commission for the purpose 'National Park'. Area: 17,572 hectares.
- The creation of Lawley River National Park was a recommendation of the Environmental Protection Authority's (1980) *Conservation Reserves for Western Australia* (Eastern area of Recommendation 7.7.2). This Park will protect the Lawley River System and its associated mudflats and mangroves.
- Date of DOLA's advice: 10 July 2000 See folio: 5 & 8
- Plans at folios: 6, 10 & 11

	OFFICER	ACTION
1	CONSERVATION ESTATE OFFICER JM	- Fill in above details - Attach copies of DOLA's advice to file _____ Send copies of advice & maps to: - Lisa Wright, Woodvale _____ - District Manager, East Kimberley _____ - Regional Manager, Kununurra _____ Recommended IUCN classification: I _____ To note: [Signature] 18/12/00
2	INDEX CLERK, RECORDS	To note: _____
3	LAND ACQUISITIONS OFFICER	To note: _____
4	MANAGER, PLANNING & VISITOR SERVICES	To note & approve IUCN classification: _____
5	DIRECTOR, NATURE CONSERVATION/ NATIONAL PARKS	To note: _____
6	PROGRAM LEADER (TENURE)	To note & update IUCN records: _____

**Customer Advices for Reserve Actions
1/07/2000 - 31/07/2000**

Shire of Wyndham-East Kimberley 1/07/2000 - 31/07/2000

Reserve No.	Land Description	DOLA File No.	Volume/Folio	Action	Document No.	Registered	Street Name	Area	Public Plans
46231	Doongan Location 30	02160-1993-01RO	3040-984	Reserve Creation for the designated purpose of "Conservation Park".	H500464			12161 Ha	Montague Sound (250) & Camden Sound and Prince Regent (250)
46232	Doongan Location 33	00543-1994-01RO	3103-225	Reserve Creation for the designated purpose of "National Park".	H500457			115325 Ha	Montague Sound (250) & Camden and Prince Regent (250)
46233	Doongan Location 32	00542-1994-01RO	3103-224	Reserve Creation for the designated purpose of "National Park".	H500459			17572 Ha	Montague Sound (250)
46234	Doongan Location 29	02161-1993-01RO	3120-831	Reserve Creation for the designated purpose of "Conservation Park".	H500482			1267 Ha	Montague Sound (250)

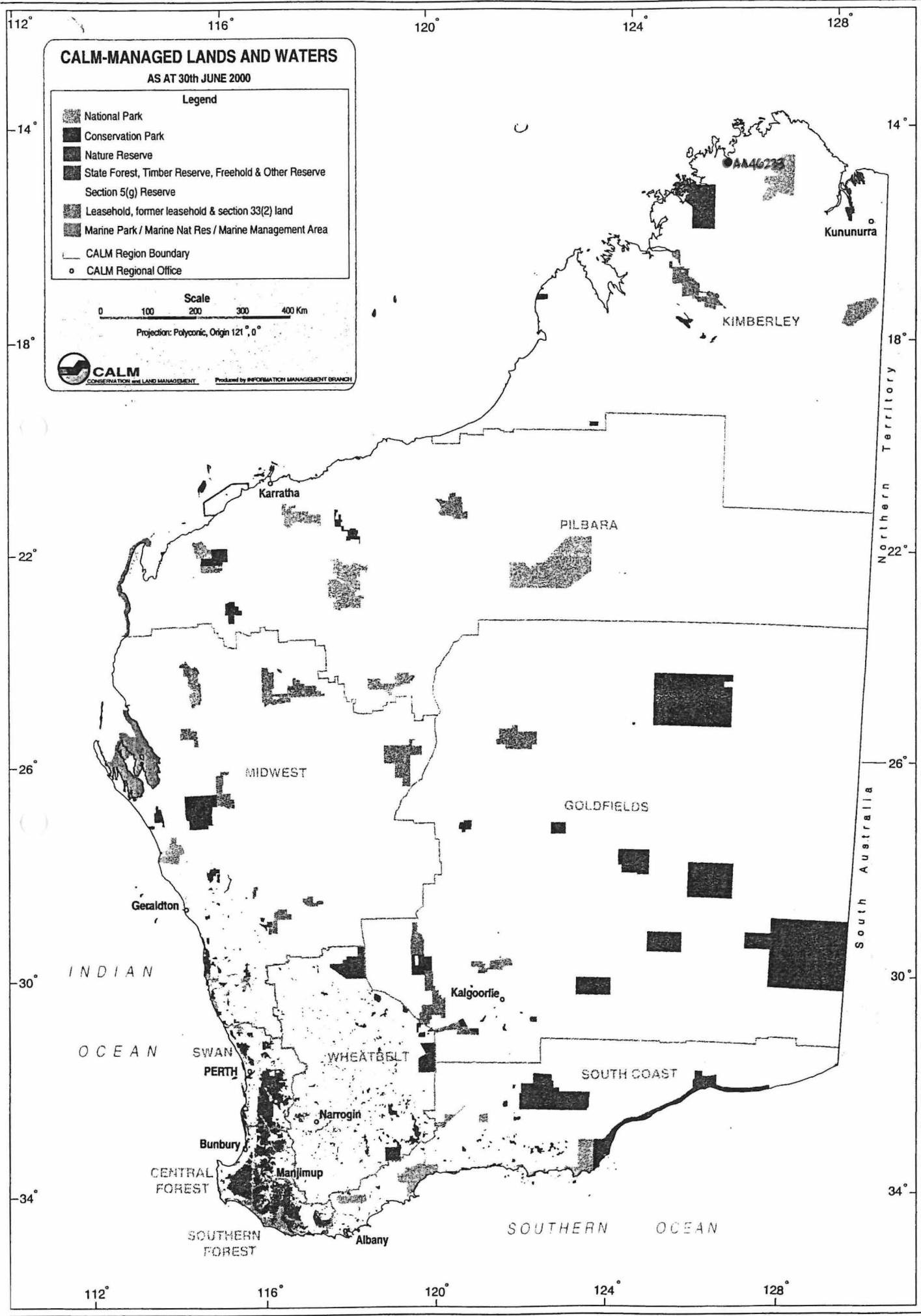
Reserves 46231 - 46234 :

lodgement/Registration date for vesting of all these reserves in NPNCAs is 11.7.00

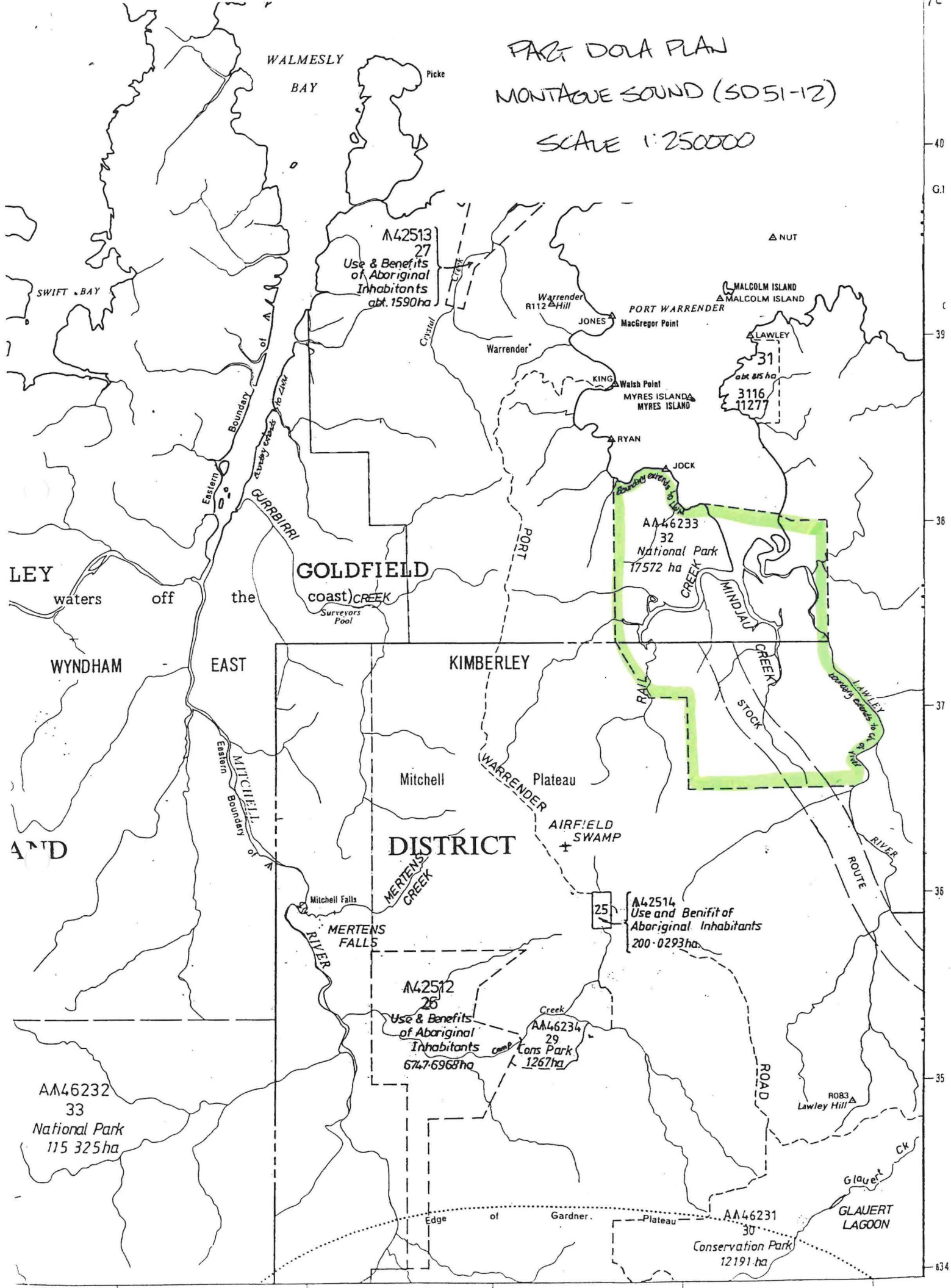
lodgement/Registration for all other actions is 10.7.00

THANK YOU,
C. BATHURST 16/8/00

FOR PLANS,
PLEASE
/ GRANT HORRE
16/8/00



PART DOLA PLAN
 MONTAGUE SOUND (SD 51-12)
 SCALE 1:250000



Roads shown on this sheet are not necessarily public roads
 All pastoral lease boundaries terminate at least 40 Metres above H.W.M.
 820000 mE