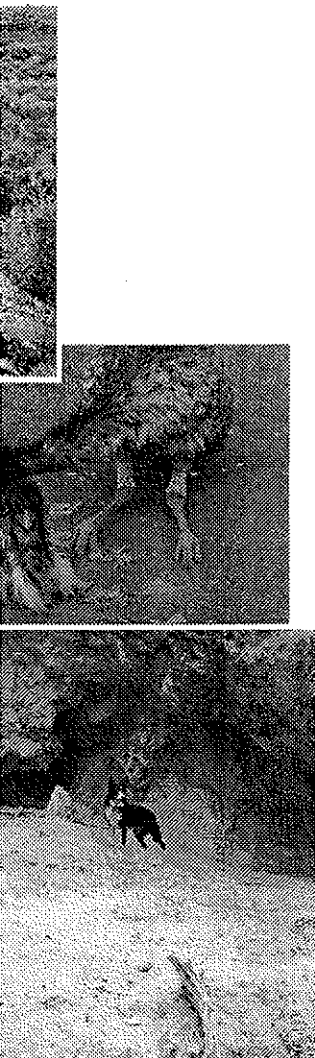


LIST OF BIRDS IDENTIFIED AT WHITE WELLS STATION

Emu	Red-capped Robin
Hoary-headed Grebe	Hooded Robin
Australasian Grebe	Western Yellow Robin
White-faced Heron	Jacky Winter
Straw-necked Ibis	Goldern Whistler
Australian Shelduck	Rufous Whistler
Pacific Black Duck	Grey Shrike-thrush
Grey Teal	Crested Bellbird
Australian Wood Duck	Grey Fantail
Square-tailed Kite	Willie Wagtail
Black-breasted Buzzard	Chestnut Quail-thrush
Whistling Kite	White-browed Babbler
Brown Goshawk	Rufous Songlark
Collared Sparrowhawk	Brown Songlark
Wedge-tailed Eagle	Splendid Fairy-wren
Little Eagle	White-winged Fairy-wren
Spotted Harrier	White-browed Scrubwren
Peregrine Falcon	Redthroat
Australian Hobby	Weebill
Brown Falcon	Western Gerygone
Nankeen Kestrel	Inland Thornbill
Malleefowl	Chestnut-rumped Thornbill
Black-tailed Native-hen	Slaty-backed Thornbill
Banded Lapwing	Yellow-rumped Thornbill
Hooded Plover	Southern Whiteface
Red-capped Plover	Varied Sittella
Black-fronted Plover	Rufous Treecreeper
Common Bronzewing	Red Wattlebird
Crested Pigeon	Spiny-cheeked Honeyeater
Red-tailed Black-Cockatoo	Yellow-throated Miner
Galah	Singing Honeyeater
Little Corella	White-eared Honeyeater
Major Mitchell Cockatoo	Yellow-plumed Honeyeater
Purple-crowned Lorikeet	Grey-fronted Honeyeater
Regent Parrot	Brown-headed Honeyeater
Australian Ringneck	Brown Honeyeater
Mulga Parrot	White-cheeked Honeyeater
Bourke's Parrot	White-fronted Honeyeater
Elegant Parrot	Tawny-crowned Honeyeater
Pallid Cuckoo	Black Honeyeater
Fan-tailed Cuckoo	Pied Honeyeater
Black-eared Cuckoo	Crimson Chat
Horsfield's Bronze-Cuckoo	White-fronted Chat
Shining Bronze-Cuckoo	Mistletoebird
Tawny Frogmouth	Striated Pardalote
Australian Owlet-nightjar	Silvereye
Spotted Nightjar	Zebra Finch
Red-backed Kingfisher	Magpie-lark
Sacred Kingfisher	Black-faced Woodswallow
White-backed Swallow	Dusky Woodswallow
Welcome Swallow	Grey Butcherbird
Tree Martin	Pied Butcherbird
Richard's Pipit	Australian Magpie
Black-faced Cuckoo-shrike	Grey Currawong
White-winged Triller	Australian Raven
Southern Scrub-robin	Little Crow



DFLOWERS
ITE WELLS STATION

culata
e white

/92

Laughing Leek

d
e covers the ground

lant prickly purple flower
ulent plant with pink flowers

ground cover

flower 3-4" stem leaves pointed.
orange red in summer.

ers

owers climber - 'Fringelily'

ers (Small Trees)

ers

er

owers shrub

- pink fading to white
Padalepis canescens

arge white
ky pink
- Pink clusters

erlasting' - pink leaves sticky

ve

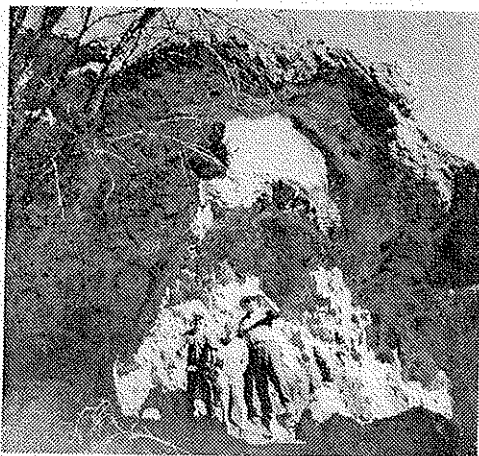
y honey' flowers pink

For bookings please telephone
Robin & Edna Tapper

096 645 017

or contact Robin Tapper
Telephone: (08) 9525 1126
Facsimile: (08) 9525 0126

Or Postal Address
White Well Station
Locked Bag
Wubin WA 6612



CONDITIONS

No linen supplied
(Available on request at \$10 per person per day)
Strictly no dogs. Refusal may offend
Patrons must pay on arrival.
All rooms and sites to be vacated by 10am.
240 volt power. On at 5pm Off at 10pm
Prices subject to change.
Deposit not refundable.
Please telephone 24 hours before for road conditions