

An Evaluation Of Northern Jarrah Forest Arboreta  
For Potential Reafforestation Species

ATTACHMENT 4

GEORGE LOWLAND ARBORETUM - FIELD GUIDE AND 1985 PERFORMANCE ANALYSIS

Davey, A.S. and Bartle, J.R.

Davey, A.S. and Bartle, J.R.

An Evaluation Of Northern Jarrah Forest Arboreta  
For Potential Reafforestation Species

ATTACHMENT 4

GEORGE LOWLAND ARBORETUM - FIELD GUIDE AND 1985 PERFORMANCE ANALYSIS

GEORGE LOWLAND

LIST OF TABLES AND FIGURES.

|             |                                       |
|-------------|---------------------------------------|
| Figure GL-1 | Location Map                          |
| Figure GL-2 | Plan of Arboretum                     |
| Table GL-1  | Plot Information                      |
| Table GL-2  | 20 Best Plots ( Ranked Best To Worst) |
| Figure GL-3 | Graph of Height                       |
| Figure GL-4 | Graph of Diameter                     |
| Figure GL-5 | Graph of Form                         |
| Figure GL-6 | Graph of Vigour                       |
| Figure GL-7 | Graph of Survival                     |
| Figure GL-8 | Graph of Rating                       |
| Table GL-3  | Plot-by-Plot Table Of Results         |

## INTRODUCTION

This booklet has been designed primarily for use as a directory for observers. It presents location maps, field guides, plot information and results for George Lowland Arboretum.

Separate graphs are presented for height, diameter, form, vigour, survival and "Rating" (ie. equal combination of height, diameter, form and vigour). For each parameter measured, plots are presented in logical sequence (starting with plot 1). Hence, travelling through an arboretum the point on the graph corresponding to a particular plot can be readily located and compared with neighbouring plots (means and 95% confidence intervals are supplied for all graphs except that for survival).

Figure GL-1: Location of GEORGE LOWLAND

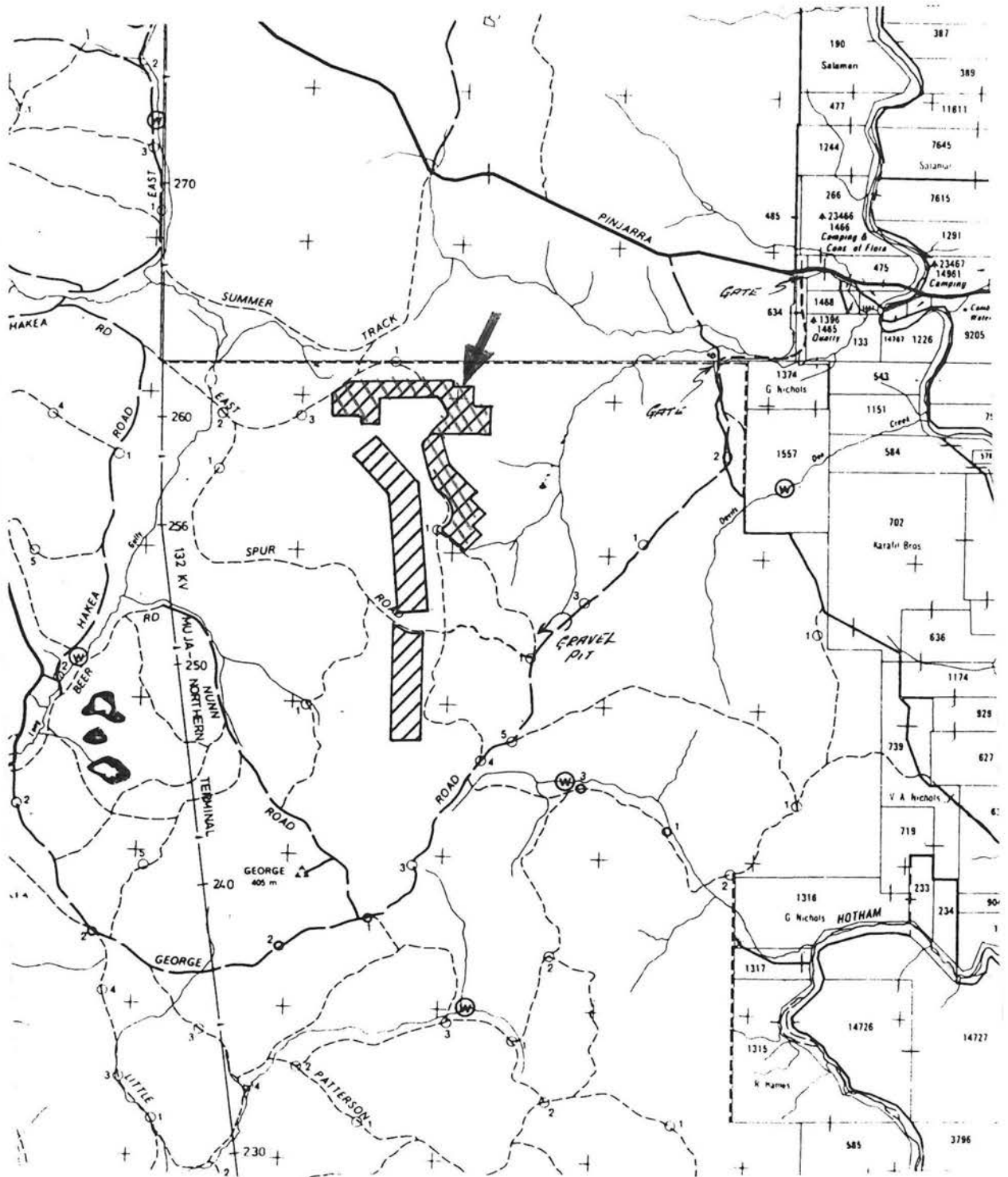


Figure GL-2: Plot Layout of GEORGE LOWLAND

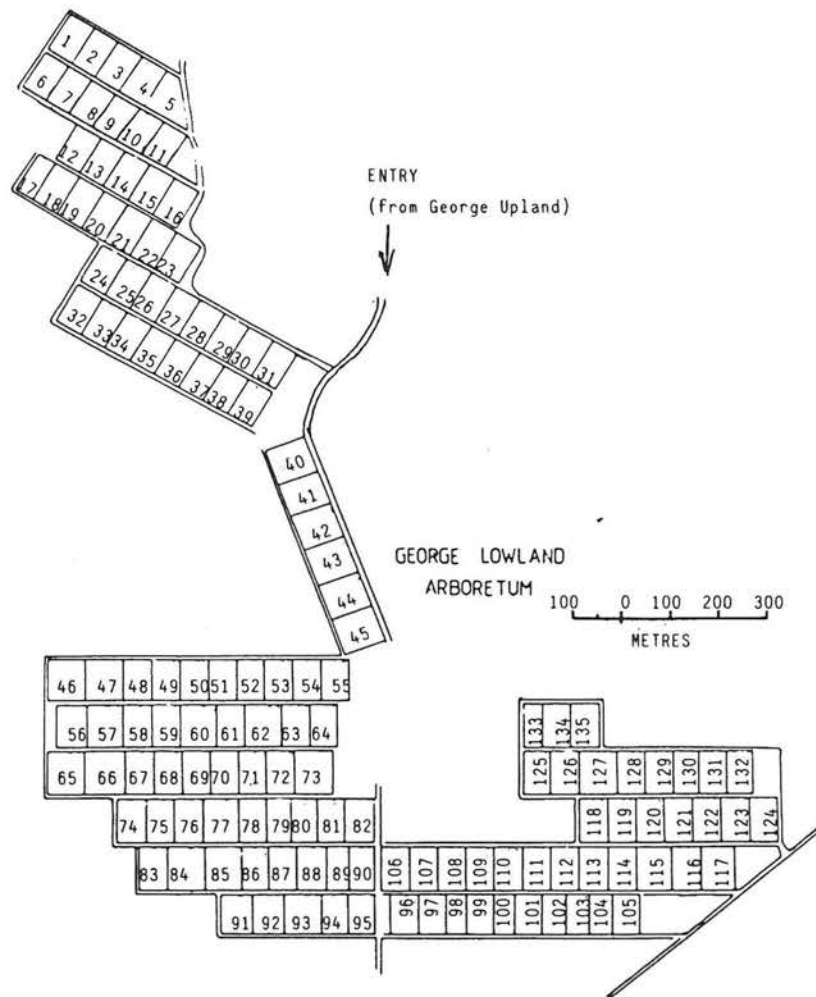


TABLE GL-1 : PROVENANCE INFORMATION FOR  
GEORGE BLOCK LOWLAND ARBORETUM

| <u>Plot</u> | <u>Species</u>                             | <u>Seedlot</u> | <u>Provenance</u>             |
|-------------|--|----------------|-------------------------------|
| 1           | <i>E.leucoxylo</i> n                       | 9600           | SW Edenhope Vic 120m          |
| 2           | <i>E.macrorhyncha</i>                      | 11165          | Urarra Forest ACT             |
| 3           | <i>E.macrorhyncha</i>                      | 12630          | Lima South Vic 480m           |
| 4           | <i>E.radiata</i>                           | 11983          | Braidwood-Nerriga NSW 820m    |
| 5           | <i>E.radiata</i>                           | 12631          | Yass NSW?                     |
| 6           | <i>E.largiflorens</i>                      | 12644          | NW Horsham Vic 100m           |
| 7           | <i>E.melliodora</i>                        | 12640          | Beaufort Vic 370m             |
| 8           | <i>E.melliodora</i>                        | 11827          | E.Trangie NSW 210m            |
| 9           | <i>E.melliodora</i>                        | 11860          | Kambar ACT 600m               |
| 10          | <i>E.maculata</i>                          | 10651          | Mt Topper.Tingha NSW 670m     |
| 11          | <i>E.cladocalyx</i>                        | 11834          | Gilgandra NSW 280m            |
| 12          | <i>E.baxteri</i>                           | 10012          | Grampian Mts Vic 300m         |
| 13          | <i>E.baxteri</i>                           | 10091          | Grampian Mts Wimmera Vic 300m |
| 14          | <i>E.baxteri</i>                           | 12642          | S.Halls Gap Vic 390m          |
| 15          | <i>E.woolsiana</i>                         | 8831           | Gilgandra NSW 270m            |
| 16          | <i>E.woolsiana</i>                         | 12105          | W.Wyalong NSW?                |
| 17          | <i>E.leucoxylo</i> n ( <i>leucoxylo</i> n) | 9601           | Ashbourne Area SA 150m        |
| 18          | <i>E.leucoxylo</i> n ( <i>leucoxylo</i> n) | 9602           | Williamstown SA 430m          |
| 19          | <i>E.leucoxylo</i> n                       | 9604           | Flinders Range SA 460m        |
| 20          | <i>E.leucoxylo</i> n                       | 10100          | Meredith Vic 300m             |
| 21          | <i>E.leucoxylo</i> n ( <i>Pruinosa</i> )   | 9597           | Arnaud Vic 230m               |
| 22          | <i>E.leucoxylo</i> n ( <i>Pruinosa</i> )   | 9598           | St.Arnaud Vic 230m            |
| 23          | <i>E.leucoxylo</i> n                       | 9600           | SW Edenhope Vic 120m          |
| 24          | <i>E.crebra</i>                            | 11206          |                               |
| 25          | <i>E.crebra</i>                            | 12010          | E.Coonabarabran NSW 510m      |
| 26          | <i>E.crebra</i>                            | 11784          | Gilgandra NSW 280m            |
| 27          | <i>E.crebra</i>                            | 8756           | Dubbo NSW 340m                |
| 28          | <i>E.viminalis</i>                         | 12400          | Blue Range Vic 1000m          |
| 29          | <i>E.viminalis</i>                         | 11823          | Eildon Vic 550m               |
| 30          | <i>E.viminalis</i>                         | 9320           | SW Port Lincoln SA?           |
| 31          | <i>E.viminalis</i>                         | 8911           | Rocky R. SA 110m              |
| 32          | <i>E.polyanthermos</i>                     | 11307          | Glen Maggie Vic 25m           |
| 33          | <i>E.polyanthermos</i>                     | 11829          | NNW Orange NSW 610m           |
| 34          | <i>E.oderata</i>                           | 6203           |                               |
| 35          | <i>E.microcarpa</i>                        | 8758           | Parkes NSW 270m               |
| 36          | <i>E.microcarpa</i>                        | 12633          | Heathcote Vic 240m            |
| 37          | <i>E.microcarpa</i>                        | 12638          | Tooborac Vic 440m             |
| 38          | <i>E.sideroxylo</i> n <i>sideroxylo</i> n  | 11844          | SE Gilgandra NSW 300m         |
| 39          | <i>E.sideroxylo</i> n ( <i>Tricarpa</i> )  | 12636          | W. Puckapunyal Vic 360m       |
| 40          | <i>E.diversicolor</i>                      | 6227           | Warren Block Manjimup WA      |
| 41          | <i>E.flocktoniae</i>                       | 6464           | N. Higginsville               |
| 42          | <i>E.rubida</i>                            | 12089          | Glendale Crossing ACT 800m    |
| 43          | <i>E.fasiculosa</i>                        | 7251           | Williamstown SA 430m          |
| 44          | <i>E.moluccana</i>                         | 10154          | Coxs Gap NSW 550m             |
| 45          | <i>E.paniculata</i>                        | 11741          | SW Grafton NSW 300m           |
| 46          | <i>E.platypus</i>                          | 6004           | 2km South Borden WA           |
| 47          | <i>E.occidentalis</i>                      | 6459           | Kalgoorlie WA                 |
|             |  | 6542           | S. of Scadden                 |
| 48          | <i>E.gomphocephala</i>                     | 6090           | Ludlow WA                     |
| 49          | <i>E.megacarpa</i>                         | 6451           | Kelmscott WA                  |
| 50          | <i>E.laeliae</i>                           | 6230           | Ex Research Dwellingup WA     |
| 51          | <i>E.patens</i>                            | 6138           | From Dwellingup District WA   |
| 52          | <i>E.calophylla</i>                        | 6336           | F.D. Narrogin WA              |
| 53          | <i>E.calophylla</i>                        | 6391           | Ex Research Como WA           |

TABLE GL-1 : (continued)

|     |   |       |                                  |
|-----|---|-------|----------------------------------|
| 54  | <i>E.marginata</i>                      | 6471  | George Block & Dwp Collection WA |
| 55  | <i>E.marginata</i>                      | 6229  | Marrinup Block Dwellingup WA     |
| 56  | <i>E.kondininensis</i>                  | 6203  | L.Pallorup Nth of Ravensthorpe   |
| 57  | <i>E.falcata</i>                        | 6525  | Stokes Block                     |
|     |   | 6438  | Dryandra SF.                     |
| 58  | <i>E.rudis</i>                          | 6295  | Ex F.D. Kelmscott WA             |
| 59  | <i>E.wandoo</i>                         | 6218  | Narrogin F.D. WA                 |
| 60  | <i>E.accendens</i>                      | 6215  | Narrogin F.D. WA                 |
| 61  | <i>E.sargentii</i>                      | 6467  | SW of Hines Hill                 |
| 62  | <i>E.spathulata</i>                     | 6221  | Narrogin Arboretum WA            |
| 63  | <i>E.conferruminata</i>                 | 6267  |                                  |
| 64  | <i>E.salmonophloia</i>                  | 6460  | Ex F.D. Kalgoorlie WA            |
| 65  | <i>E.astringens</i>                     | 6529  | Dwellingup collection WA         |
|     |   | 4716  | F.D. Narrogin WA                 |
| 66  | <i>E.gardenerii</i>                     | 6228  | Dryandra Western Section         |
| 67  | <i>E dives</i>                          | 8417  | Tumut NSW 270m                   |
| 68  | <i>E.aromophloia</i>                    | 12641 | NE Halls Gap Vic 170m            |
| 69  | <i>E.aromophloia</i>                    | 11311 | Mt Lonarch Vic                   |
| 70  | <i>E.griffithsii</i>                    | 6466  | Ex F.D. Kalgoorlie WA            |
| 71  | <i>E.longicornis</i>                    | 6463  | 2.5km E. of Yellowdine           |
| 72  | <i>E.oleosa</i>                         | 6462  | W.Celebration                    |
| 73  | <i>E.salubris</i>                       | 6461  | SE Coolgardie WA                 |
| 74  | <i>E dives</i>                          | 10064 | Carabost NSW 610m                |
| 75  | <i>E.gonicocalyx</i>                    | 12098 | L.George NSW 660m                |
| 76  | <i>E.gonicocalyx</i>                    | 12637 | E.Tooborac Vic 410m              |
| 77  | <i>E.mannifera</i> spp. <i>maculosa</i> | 12159 | Yass NSW                         |
| 78  | <i>E.huberana</i>                       | 7248  | Williamstown SA 430m             |
| 79  | <i>E.cladocalyx</i>                     | 11834 | Gilgandra NSW 280m               |
| 80  | <i>E.cladocalyx</i>                     | 6470  | Collie WA?                       |
| 81  | <i>E.largiflorens</i>                   | 10676 | L.Albacutya Vic 75m              |
| 82  | <i>E.largiflorens</i>                   | 11912 | L.Albacutya Vic 60m              |
| 83  | <i>E.camaldulensis</i>                  | 11340 | Minlaton SA 60m                  |
| 84  | <i>E.wandoo</i>                         | 4886  | Ashcliffe Rd Harvey WA           |
| 85  | <i>E.loxophleba</i>                     | 6150  | F.D. Narrogin WA                 |
| 86  | <i>E.camaldulensis</i>                  | 10089 | Horsham-Wimmera Vic 150m         |
| 87  | <i>E.saligna</i>                        | 6234  | Williams Springs Arboretum       |
| 88  | <i>E.camaldulensis</i>                  | 11910 | L.Albacutya Vic 60m              |
| 89  | <i>Pinus pinaster</i>                   | -     |                                  |
| 90  | <i>Pinus radiata</i>                    | -     |                                  |
| 91  | <i>E.intertexta</i>                     | 11302 | Kenmore Parke SA 400m            |
| 92  | <i>E.drepanophylla</i>                  | 11412 | N.Marlborough Qld 120m           |
| 93  | <i>E.decorticans</i>                    | 10148 | Murgon Qld 300m                  |
| 94  | <i>E.resinifera</i>                     | 10431 | N.of Woolgoolga NSW 6m           |
| 95  | <i>E.resinifera</i>                     | 10962 | S.Helenvale Qld 170m             |
| 96  | <i>E.cypellocarpa</i>                   | 12390 | N. of Erica Vic?                 |
| 97  | <i>E.cypellocarpa</i>                   | 9440  | Fitzroy Falls NSW 60m            |
| 98  | <i>E.pilularis</i>                      | 12136 | Meroo Pt Road NSW 40m            |
| 99  | <i>E.pilularis</i>                      | 12158 | S.Port Stephens NSW 30m          |
| 100 | <i>E.albens</i>                         | 8827  | Tooraweenah NSW 335m             |
| 101 | <i>E.albens</i>                         | 10457 | Gilgandra NSW 290m               |
| 102 | <i>E.albens</i>                         | 12632 | Tongio Gap Vic 720m              |
| 103 | <i>E.melanophloia</i>                   | 6959  | N.Charleville Qld 410m           |
| 104 | <i>E.melanophloia</i>                   | 6520  | Warialda NSW 300m                |
| 105 | <i>E.melanophloia</i>                   | 10783 | NE Narrabri NSW 360m             |
| 106 | <i>E.citriodora</i>                     | 12012 | Dawson Range Qld 180m            |
| 107 | <i>E.ocrophloia</i>                     | 11731 | S.Quilpie Qld 180m               |
| 108 | <i>E.ocrophloia</i>                     | 8584  | Tongo NSW 80m                    |

TABLE\_GL-1 : (continued)

|     |                             |       |                                |
|-----|-----------------------------|-------|--------------------------------|
| 109 | <i>E.maculata</i>           | 11965 | Coffs Harbour NSW 300m         |
| 110 | <i>E.citriodora</i>         | 10767 | Wirrabara For.Res.Stn. SA 360m |
| 111 | <i>E.maculata</i>           | 4817  | Kirup WA                       |
| 112 | <i>E.maculata</i>           | 9448  | Kiola SF?                      |
| 113 | <i>E.resinifera</i>         | 11963 | Medowie SF NSW 20m             |
| 114 | <i>E.maculata</i>           | 11181 | Hunter Valley NSW 20m          |
| 115 | <i>E.paniculata</i>         | 11600 | N.of Raymond Tce NSW 225m      |
| 116 | <i>E.botryoides</i>         | 12104 | W.Orbost Vic 30m               |
| 117 | <i>E.botryoides</i>         | 12134 | Meroo Pt NSW 9m                |
| 118 | <i>E.maculata</i>           | 10728 | Beaufort Vic 460m              |
| 119 | <i>E.robusta</i>            | 10063 | Port Stephens NSW 30m          |
| 120 | <i>E.robusta</i>            | 10176 | Huskisson NSW 3m               |
| 121 | <i>E.botryoides</i>         | 7809  |                                |
| 122 | <i>E.camaldulensis</i>      | 11910 | L.Albacutyl Vic 60m            |
| 123 | <i>E.wandoo</i>             | 6218  | Narrogin F.D. WA               |
| 124 | <i>E.resinifera</i>         | 6011  | Jarrahdale WA                  |
| 125 | <i>E.intertexta</i>         | 12470 | W.of St.George Qld 200m        |
| 126 | <i>E.intertexta</i>         | 11630 | Nyngan NSW 170m                |
| 127 | <i>E.globulus</i>           | 6291  | Tas?                           |
| 128 | <i>E.glomphocephala</i>     | 6090  | Ludlow WA                      |
| 129 | <i>E.microtheca</i>         | 12538 | Murchison R. WA 160m           |
| 130 | <i>E.microtheca</i>         | 12497 | NE Blackall Qld 283m           |
| 131 | <i>E.microtheca</i>         | 12811 | Mercadool NSW 152m             |
| 132 | <i>E.transcontinentalis</i> | 6465  | 13km NE Coolgardie WA          |
|     |                             | 6128  | " " " "                        |
| 133 | <i>E.camaldulensis</i>      | 6966  | Angaston SA 640m               |
| 134 | <i>E.citriodora</i>         | 6240  | WA Unknown                     |
| 135 | <i>E.intertexta</i>         | 11736 | Girilambone NSW 250m           |

## RESULTS

Plot by plot results detailing means, upper and lower 95% confidence limits for height, diameter, form, vigour and rating are listed in Table GL-3 towards the end of this booklet. Survival, and the presence/absence of evidence of stem borers, termites and cambial splits within each plot is also noted in Table GL-3.

Comparing the mean rating of each of the plots, the top 20 plots (ranked from best to worst) are listed in Table GL-2.

Comparing the mean rating of each of the plots, the top 10 plots (ranked from best to worst) are listed in Table GL-2, below.

The following figures display plot-by-plot graphs of mean and 95% confidence interval for height (Figure GL-3), diameter (Figure GL-4) form (Figure GL-5), vigour (Figure GL-6) and mean for survival (Figure GL-7).

Figure GL-8 presents a plot-by-plot graph of Rating (ie combination of height, diameter, form and vigour).

TABLE GL-2 LISTING OF TOP 20 PLOTS (IN ORDER OF RATING)

| PLOT | SPECIES              | SEEDLOT   | DEFECT | BEST |
|------|----------------------|-----------|--------|------|
| 121  | E.botryoides         | 7509      |        |      |
| 40   | E.diversicolor       | 12636     | B      |      |
| 116  | E.botryoides         | 12104     |        |      |
| 117  | E.botryoides         | 12134     |        |      |
| 90   | Pinus radiata        | 5086/7    |        |      |
| 87   | E.saligna/botryoides | 6234      |        |      |
| 29   | E.viminalis          | 11823     |        |      |
| 113  | E.resinifera         | 11963     | B      |      |
| 11   | E.cladocalyx         | 11834     |        |      |
| 80   | E.cladocalyx         | 6470      |        |      |
| 89   | Pinus pinaster       | 5083      |        |      |
| 114  | E.maculata           | 11181     |        |      |
| 128  | E.gomphocephala      | 6090      |        |      |
| 120  | E.robusta            | 10176     |        |      |
| 127  | E.globulus           | 6291      | B      |      |
| 31   | E.viminalis          | 8911      |        |      |
| 124  | E.resinifera         | 6011      | B      |      |
| 94   | E.resinifera         | 10431     | B      |      |
| 65   | E.astringens         | 6259/4716 |        |      |
| 42   | E.rubida             | 12089     |        |      |

SYMBOLS : B = BORER OCCURRENCE NOTED IN PLOT  
 T = TERMITE OCCURRENCE NOTED IN PLOT  
 C = CAMBIAL SPLITS NOTED IN PLOT  
 S = SURVIVAL LESS THAN 50%

FIGURE GL-3 : GRAPH OF GEORGE LOWLAND MEAN PLOT HEIGHTS

HEIGHT (M)

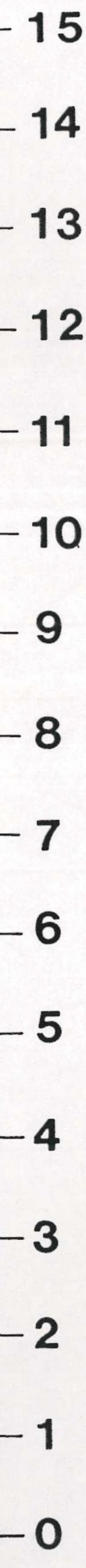
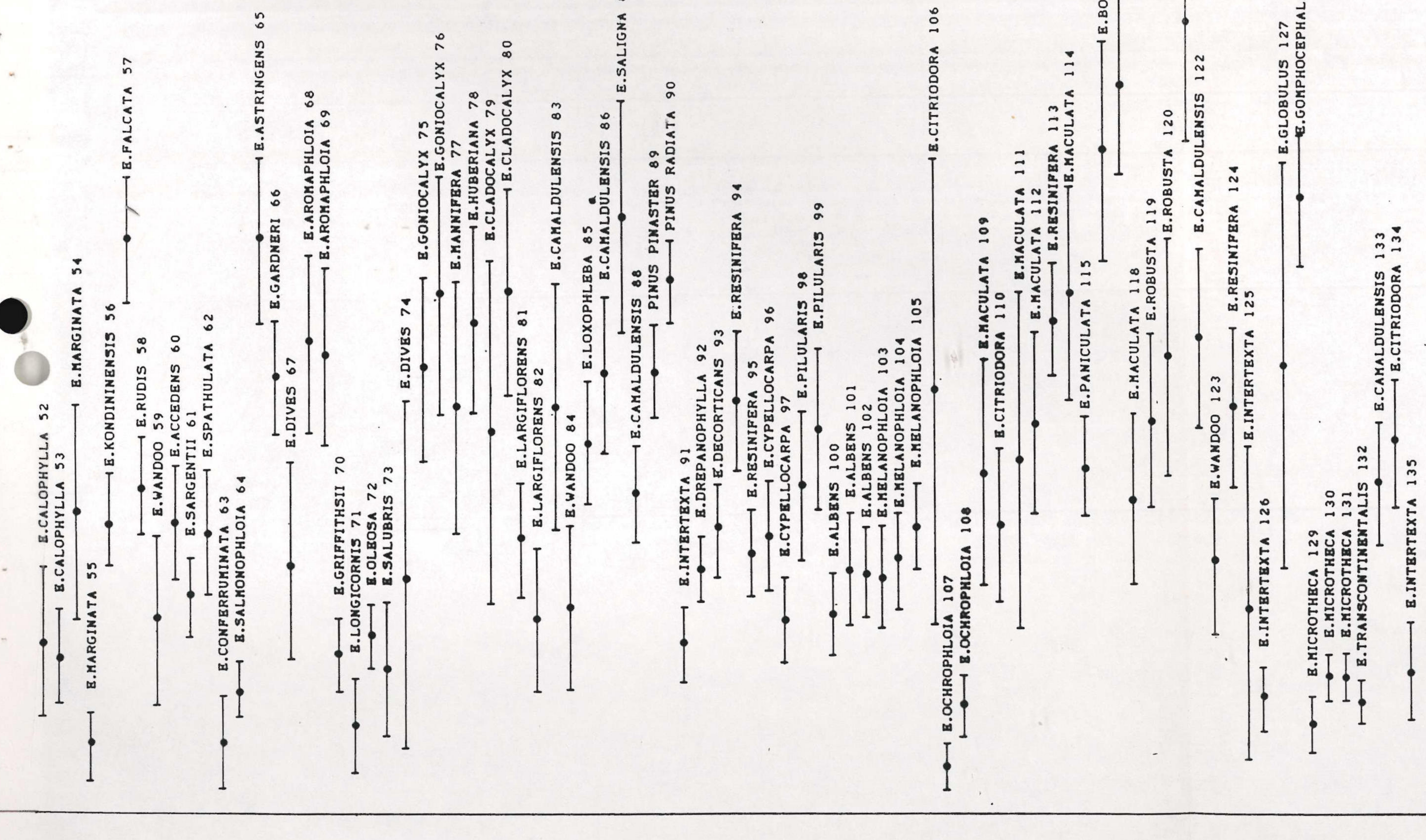
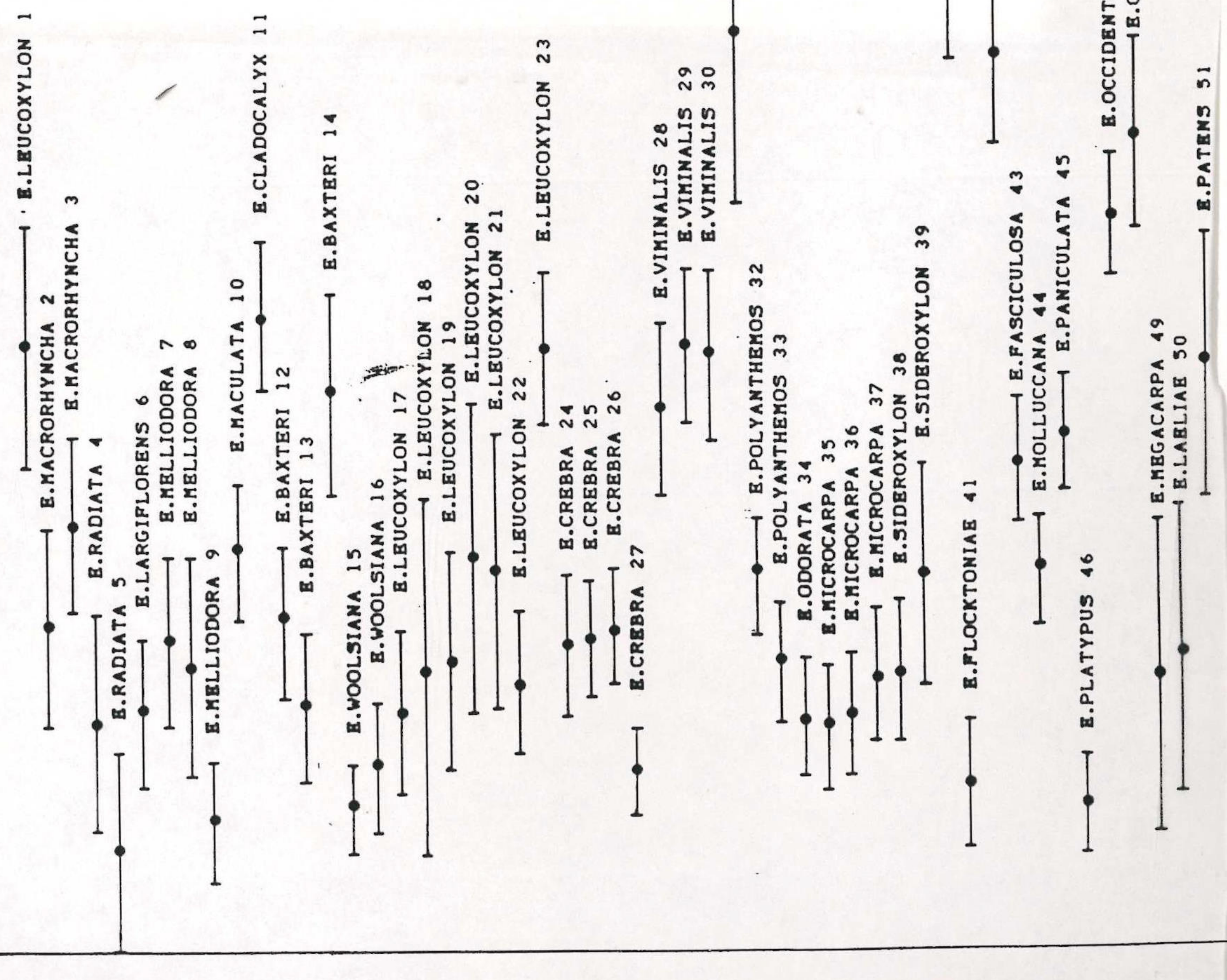


FIGURE GL-4 : GRAPH OF GEORGE LOWLAND MEAN PLOT DIAMETERS

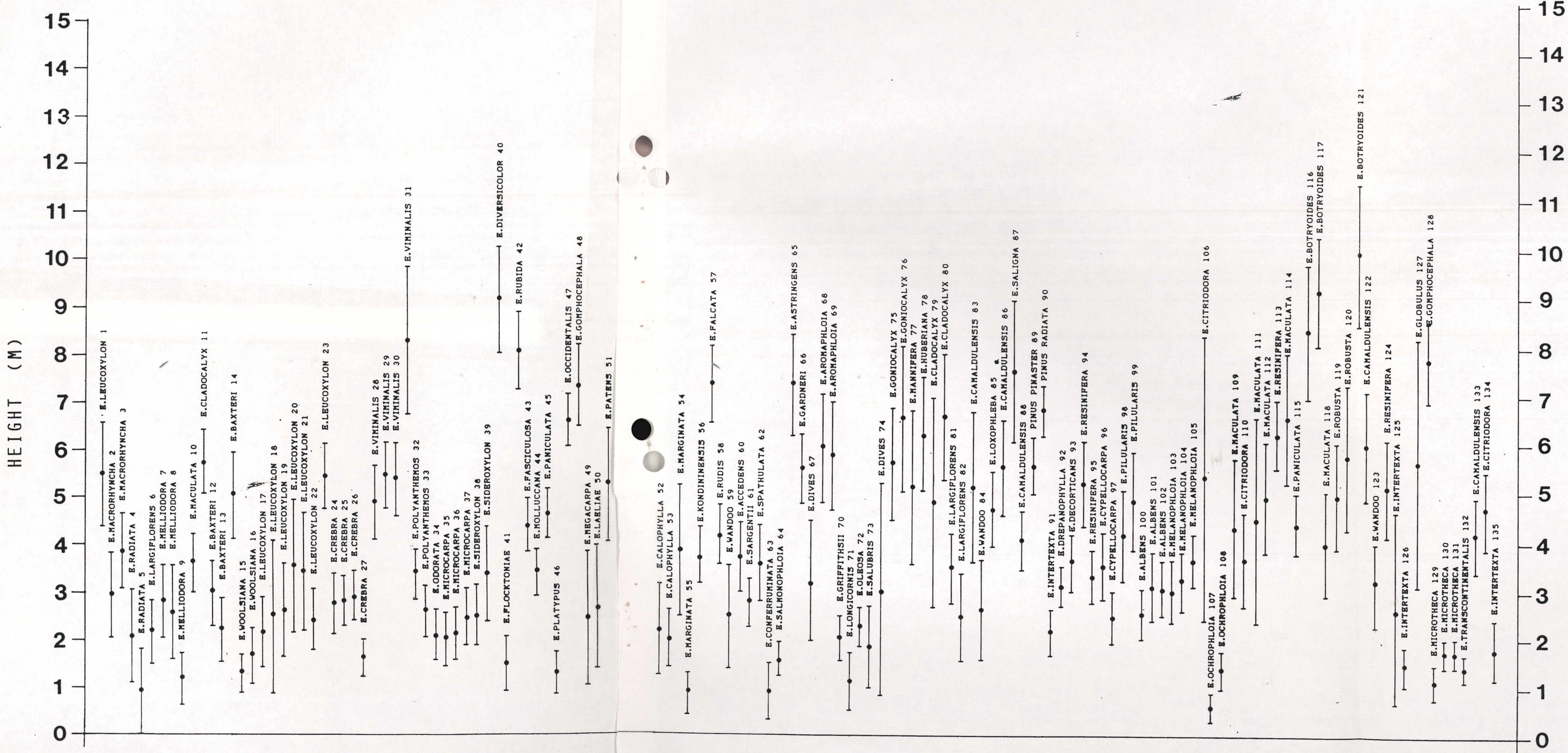


FIGURE GL-5 : GRAPH OF GEORGE LOWLAND MEAN PLOT FORM

FORM (POINTS)

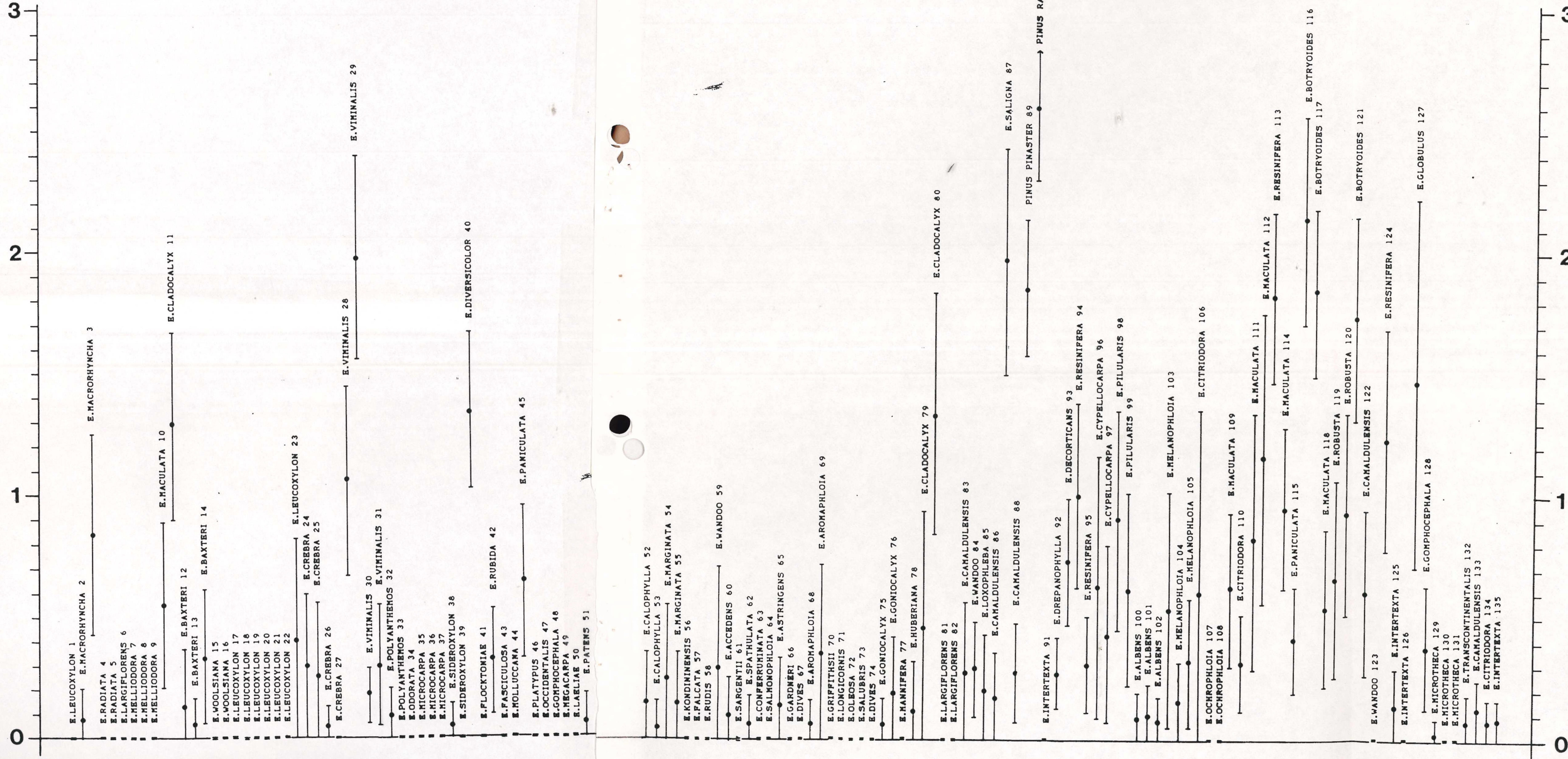


FIGURE GL-6 : GRAPH OF GEORGE LOWLAND MEAN PLOT VIGOUR

VIGOUR (POINTS)

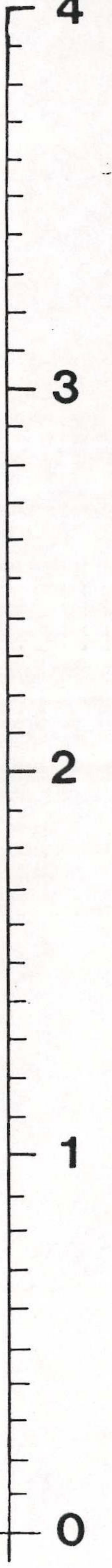
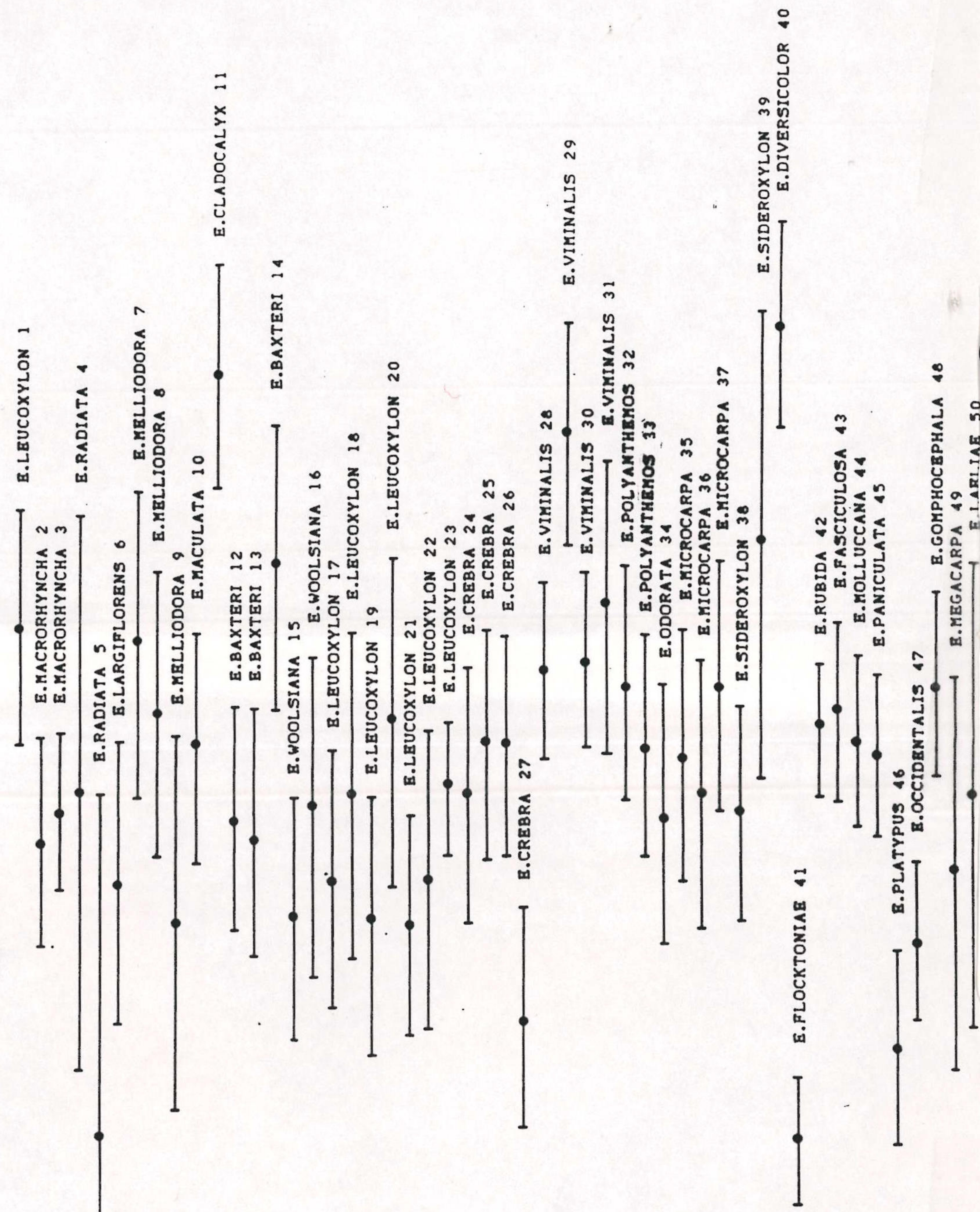
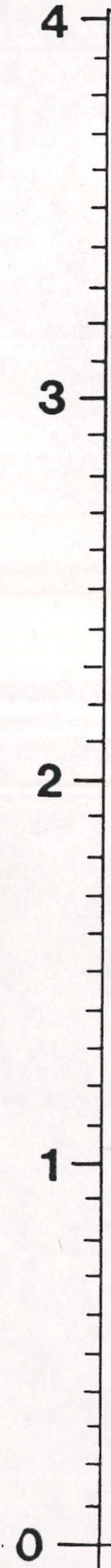


FIGURE GL-7 : GRAPH OF GEORGE LOWLAND MEAN PLOT SURVIVAL

GEORGE LOWLAND

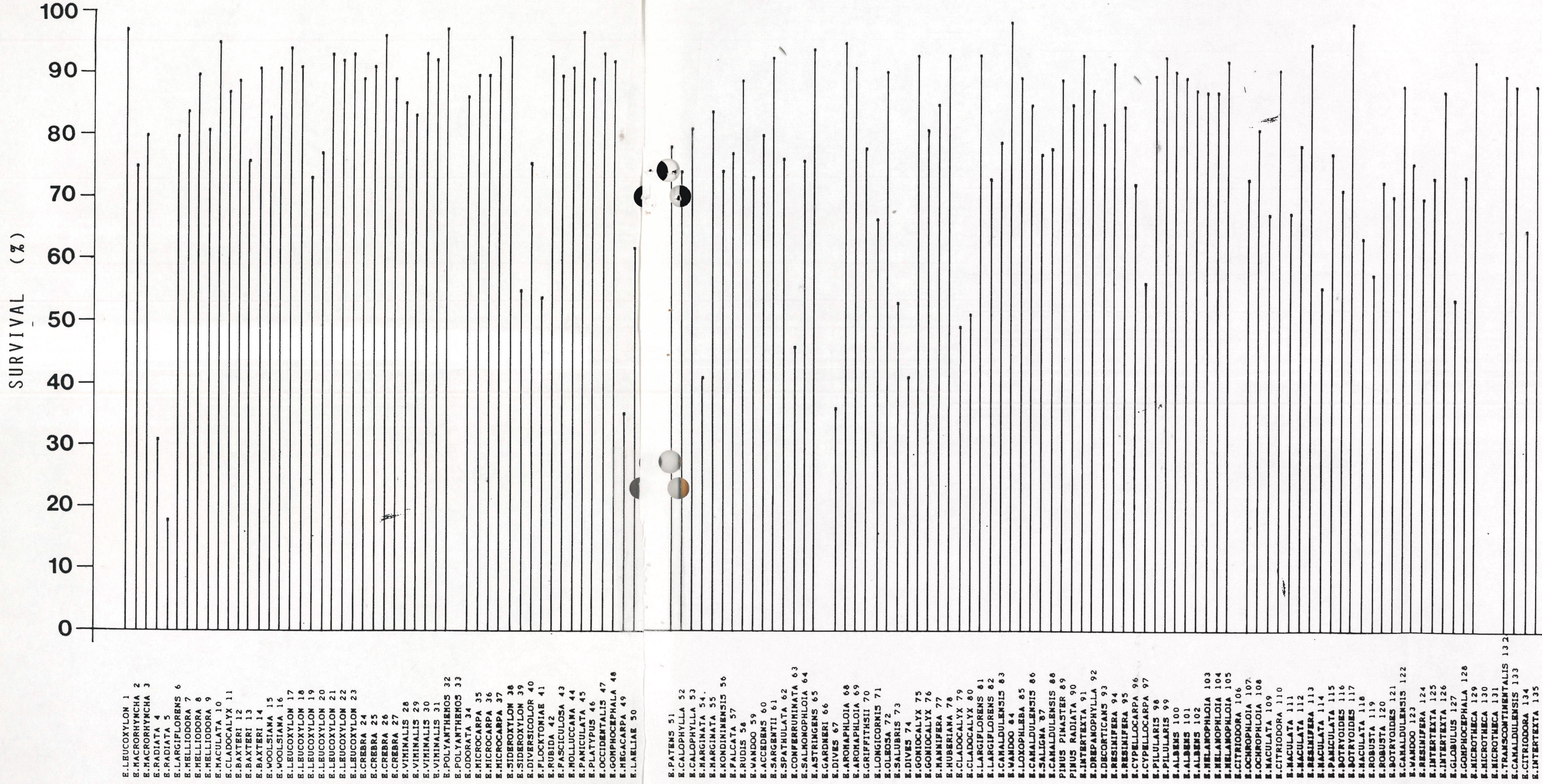


FIGURE GL-8    GRAPH OF RATING

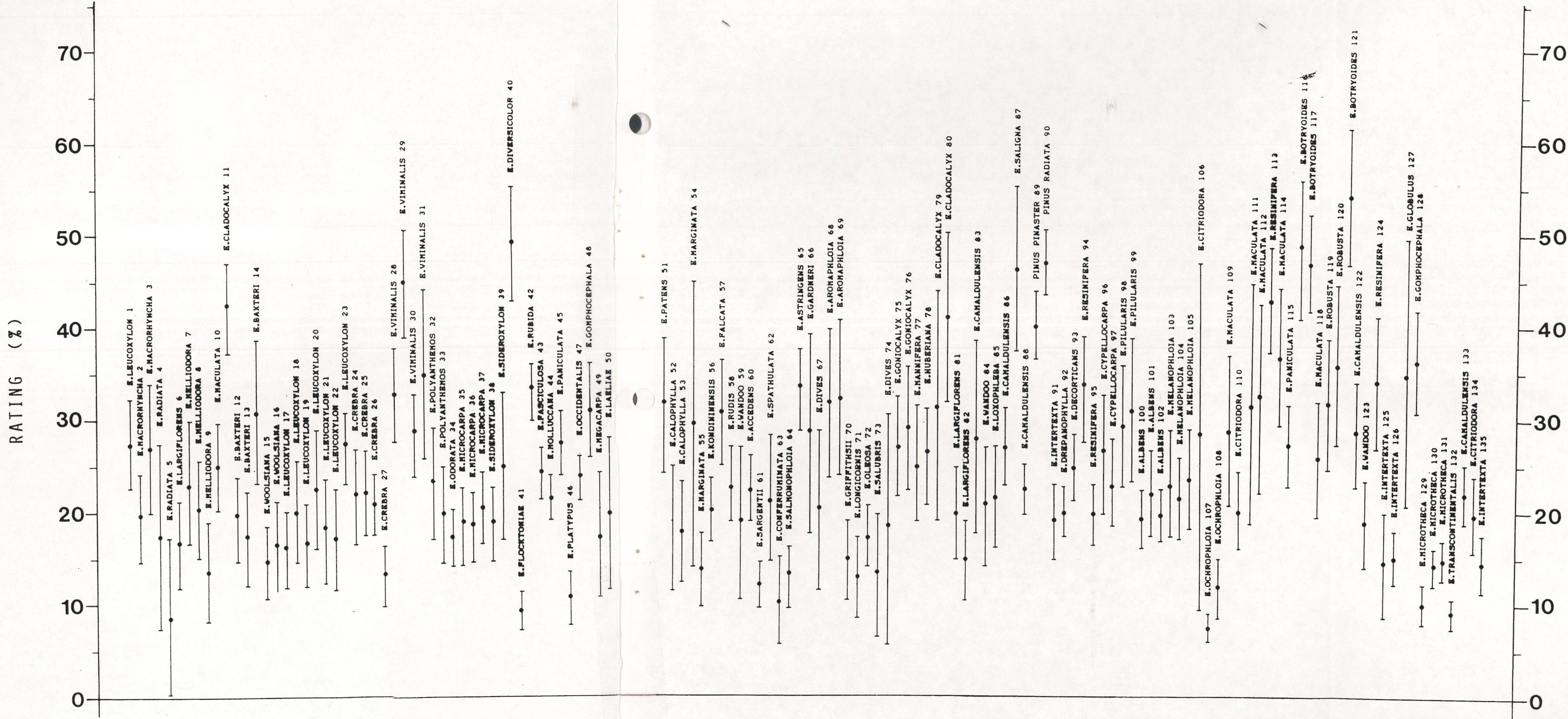


TABLE GL-3 :

PLOT BY PLOT TABLE OF RESULTS

-MEANS AND 95% CONFIDENCE INTERVALS-

| PLOT NO | SPECIES & SEEDLOT         | ARB SURV (%) | S S B | HEIGHT |       |       | DIAMETER |      |     | FORM |      |       | VIGOUR |      |      | RATING |      |      |      |
|---------|---------------------------|--------------|-------|--------|-------|-------|----------|------|-----|------|------|-------|--------|------|------|--------|------|------|------|
|         |                           |              |       | cm     | you   | x     | cm       | you  | x   | you  | you  | x     | you    | you  | x    | you    | you  | x    |      |
|         |                           |              |       |        |       |       |          |      |     |      |      |       |        |      |      |        |      |      |      |
| 1       | E. LEUCOXYLON 9600        | GL           | 97    | ---    | 6.55  | 4.42  | 5.49     | 7.6  | 5.2 | 6.4  | 0.00 | 0.00  | 0.00   | 2.52 | 2.13 | 2.48   | 31.9 | 22.3 | 27.1 |
| 2       | E. MACRODRHYNCHA 11165    | GL           | 75    | ---    | 3.86  | 2.08  | 2.97     | 6.1  | 3.3 | 4.7  | 0.20 | -0.06 | 0.07   | 2.17 | 1.56 | 1.87   | 24.0 | 14.4 | 19.2 |
| 3       | E. MACRODRHYNCHA 12630    | GL           | 80    | ---    | 4.67  | 3.11  | 3.89     | 7.1  | 4.5 | 5.8  | 1.25 | 0.43  | 0.84   | 2.18 | 1.72 | 1.95   | 33.2 | 20.0 | 26.6 |
| 4       | E. RADIATA 11983          | GL           | 31    | Y      | 3.09  | 1.15  | 2.12     | 4.6  | 1.8 | 3.2  | 0.00 | 0.00  | 0.00   | 2.80 | 1.20 | 2.00   | 27.3 | 7.5  | 17.4 |
| 5       | E. RADIATA 12531          | GL           | 18    | Y      | 1.81  | -0.01 | 0.90     | 3.4  | 0.0 | 1.7  | 0.00 | 0.00  | 0.00   | 2.00 | 0.00 | 1.00   | 17.0 | 0.0  | 8.5  |
| 6       | E. LARGIFLORENS 12644     | GL           | 80    | ---    | 2.84  | 1.53  | 2.18     | 4.8  | 2.6 | 3.7  | 0.00 | 0.00  | 0.00   | 2.15 | 1.35 | 1.75   | 21.0 | 11.7 | 16.4 |
| 7       | E. MELLIODORA 12640       | GL           | 84    | ---    | 3.58  | 2.08  | 2.83     | 6.3  | 4.1 | 5.2  | 0.00 | 0.00  | 0.00   | 2.89 | 1.99 | 2.44   | 29.2 | 16.3 | 22.7 |
| 8       | E. MELLIODORA 11827       | GL           | 90    | Y      | 3.57  | 1.62  | 2.59     | 5.3  | 3.0 | 4.1  | 0.00 | 0.00  | 0.00   | 2.64 | 1.83 | 2.24   | 23.4 | 15.0 | 20.2 |
| 9       | E. MELLIODORA 11860       | GL           | 81    | ---    | 1.73  | 0.66  | 1.19     | 3.4  | 1.4 | 2.4  | 0.00 | 0.00  | 0.00   | 2.18 | 1.11 | 1.64   | 18.2 | 8.1  | 13.1 |
| 10      | E. MACULATA 10515         | GL           | 95    | Y      | 4.27  | 2.99  | 3.63     | 5.6  | 3.6 | 4.7  | 0.89 | 0.21  | 0.55   | 2.48 | 1.82 | 2.15   | 25.5 | 20.1 | 24.6 |
| 11      | E. C. ADDALYX 11834       | GL           | 87    | ---    | 6.47  | 5.13  | 5.80     | 5.6  | 7.3 | 6.5  | 1.67 | 0.90  | 1.29   | 3.53 | 2.90 | 3.21   | 46.6 | 37.3 | 42.0 |
| 12      | E. BAXTERI 10012          | GL           | 89    | ---    | 3.65  | 2.31  | 2.98     | 4.3  | 2.7 | 3.5  | 0.37 | -0.12 | 0.13   | 2.26 | 1.61 | 1.94   | 23.4 | 14.7 | 19.1 |
| 13      | E. BAXTERI 10091          | GL           | 76    | ---    | 2.90  | 1.58  | 2.24     | 3.8  | 2.1 | 3.0  | 0.16 | -0.05 | 0.05   | 2.25 | 1.54 | 1.89   | 21.9 | 12.1 | 17.0 |
| 14      | E. BAXTERI 12642          | GL           | 91    | ---    | 5.98  | 4.18  | 5.08     | 6.6  | 5.5 | 7.1  | 0.61 | 0.06  | 0.33   | 3.07 | 2.26 | 2.67   | 36.1 | 22.9 | 30.5 |
| 15      | E. WOODLBIANA 8831        | GL           | 83    | ---    | 1.68  | 0.95  | 1.31     | 3.8  | 2.1 | 3.0  | 0.00 | 0.00  | 0.00   | 1.99 | 1.30 | 1.65   | 17.9 | 10.3 | 14.1 |
| 16      | E. WOODLBIANA 12105       | GL           | 91    | ---    | 2.26  | 1.13  | 1.69     | 3.2  | 2.0 | 2.6  | 0.00 | 0.00  | 0.00   | 2.40 | 1.49 | 1.95   | 20.9 | 11.3 | 16.1 |
| 17      | E. LEUCOXYLON 9601        | GL           | 94    | Y      | 2.88  | 1.47  | 2.18     | 3.7  | 2.2 | 2.9  | 0.00 | 0.00  | 0.00   | 2.13 | 1.39 | 1.76   | 19.6 | 11.9 | 15.8 |
| 18      | E. LEUCOXYLON 9602        | GL           | 91    | Y      | 4.12  | 1.88  | 3.00     | 6.4  | 3.4 | 4.9  | 0.00 | 0.00  | 0.00   | 2.47 | 1.53 | 2.00   | 25.1 | 14.5 | 19.8 |
| 19      | E. LEUCOXYLON 9604        | GL           | 73    | Y      | 3.63  | 1.67  | 2.65     | 5.3  | 2.8 | 4.1  | 0.00 | 0.00  | 0.00   | 1.99 | 1.26 | 1.63   | 20.7 | 11.9 | 16.3 |
| 20      | E. LEUCOXYLON 10100       | GL           | 77    | Y      | 4.92  | 2.18  | 3.55     | 7.0  | 3.4 | 5.2  | 0.00 | 0.00  | 0.00   | 2.69 | 1.73 | 2.21   | 28.4 | 15.9 | 22.1 |
| 21      | E. LEUCOXYLON 9597        | GL           | 93    | ---    | 4.67  | 2.21  | 3.44     | 6.6  | 2.7 | 4.7  | 0.00 | 0.00  | 0.00   | 1.94 | 1.30 | 1.62   | 23.2 | 12.4 | 17.8 |
| 22      | E. LEUCOXYLON 9598        | GL           | 92    | ---    | 3.09  | 1.81  | 2.45     | 5.2  | 3.0 | 4.1  | 0.00 | 0.00  | 0.00   | 2.18 | 1.32 | 1.75   | 22.3 | 11.4 | 16.9 |
| 23      | E. LEUCOXYLON 9600        | GL           | 93    | ---    | 6.15  | 4.76  | 5.46     | 7.4  | 5.8 | 6.6  | 0.52 | -0.02 | 0.40   | 2.21 | 1.65 | 2.03   | 31.3 | 22.7 | 27.0 |
| 24      | E. CREBRA 12506           | GL           | 89    | ---    | 3.36  | 2.14  | 2.75     | 5.8  | 3.6 | 4.7  | 0.59 | 0.01  | 0.30   | 2.37 | 1.63 | 2.00   | 26.4 | 16.2 | 21.3 |
| 25      | E. CREBRA 12010           | GL           | 91    | ---    | 3.34  | 2.31  | 2.83     | 5.5  | 3.8 | 4.6  | 0.56 | -0.06 | 0.25   | 2.48 | 1.62 | 2.15   | 26.2 | 17.6 | 21.9 |
| 26      | E. CREBRA 11784           | GL           | 96    | Y      | 3.43  | 2.44  | 2.94     | 5.5  | 3.8 | 4.5  | 0.13 | -0.04 | 0.05   | 2.44 | 1.63 | 2.14   | 23.8 | 17.6 | 20.7 |
| 27      | E. CREBRA 8756            | GL           | 89    | ---    | 2.00  | 1.28  | 1.64     | 4.2  | 2.7 | 3.4  | 0.00 | 0.00  | 0.00   | 1.68 | 1.03 | 1.35   | 16.0 | 10.0 | 13.0 |
| 28      | E. VIMINALIS 12400        | GL           | 86    | ---    | 5.67  | 4.19  | 4.93     | 7.7  | 5.5 | 6.6  | 1.44 | 0.67  | 1.06   | 2.61 | 2.11 | 2.36   | 37.4 | 27.6 | 32.5 |
| 29      | E. VIMINALIS 11823        | GL           | 84    | ---    | 6.18  | 4.60  | 5.49     | 9.1  | 6.6 | 7.9  | 2.39 | 1.56  | 1.97   | 3.38 | 2.72 | 3.05   | 50.2 | 36.5 | 44.4 |
| 30      | E. VIMINALIS 5320         | GL           | 94    | ---    | 6.16  | 4.61  | 5.39     | 8.1  | 6.2 | 7.1  | 0.25 | 0.05  | 0.18   | 2.63 | 2.13 | 2.36   | 32.3 | 23.9 | 28.1 |
| 31      | E. VIMINALIS 8911         | GL           | 93    | ---    | 9.84  | 6.80  | 8.32     | 9.4  | 6.1 | 7.7  | 0.55 | 0.05  | 0.30   | 2.97 | 2.13 | 2.65   | 43.2 | 25.3 | 34.3 |
| 32      | E. POLYANTHEMOS 11307     | GL           | 97    | ---    | 3.93  | 2.78  | 3.35     | 5.9  | 3.8 | 4.9  | 0.21 | -0.03 | 0.09   | 2.66 | 1.98 | 2.32   | 26.7 | 16.9 | 22.8 |
| 33      | E. POLYANTHEMOS 11829     | GL           | 99    | ---    | 3.15  | 2.07  | 2.61     | 4.6  | 3.0 | 3.8  | 0.00 | 0.00  | 0.00   | 2.46 | 1.62 | 2.14   | 24.8 | 14.0 | 19.4 |
| 34      | E. ODORATA 6703           | GL           | 86    | ---    | 2.64  | 1.61  | 2.12     | 3.8  | 2.4 | 3.1  | 0.00 | 0.00  | 0.00   | 2.31 | 1.58 | 1.94   | 20.1 | 13.8 | 16.9 |
| 35      | E. MICROCARPA 8756        | GL           | 90    | ---    | 2.55  | 1.49  | 2.02     | 4.1  | 2.7 | 3.4  | 0.00 | 0.00  | 0.00   | 2.47 | 1.74 | 2.11   | 22.4 | 14.0 | 18.2 |
| 36      | E. MICROCARPA 12633       | GL           | 90    | ---    | 2.71  | 1.68  | 2.19     | 4.8  | 3.0 | 3.9  | 0.00 | 0.00  | 0.00   | 2.39 | 1.61 | 2.00   | 21.7 | 14.3 | 18.0 |
| 37      | E. MICROCARPA 12638       | GL           | 93    | ---    | 3.10  | 1.94  | 2.52     | 4.3  | 2.9 | 3.6  | 0.00 | 0.00  | 0.00   | 2.67 | 1.56 | 2.32   | 24.0 | 16.2 | 20.1 |
| 38      | E. SIDEROXYLON            | 38 GL        | 96    | ---    | 3.17  | 1.90  | 2.53     | 5.0  | 3.0 | 4.0  | 0.14 | -0.05 | 0.05   | 2.26 | 1.64 | 1.96   | 22.3 | 14.7 | 18.5 |
| 39      | E. SIDEROXYLON 11844      | GL           | 95    | ---    | 4.40  | 2.42  | 3.41     | 6.3  | 3.3 | 4.8  | 0.00 | 0.00  | 0.00   | 3.40 | 2.06 | 2.73   | 32.6 | 17.0 | 24.6 |
| 40      | E. DIVERSICOLOR 12636     | GL           | 76    | Y      | 10.27 | 8.09  | 9.18     | 11.4 | 8.7 | 10.1 | 1.66 | 1.02  | 1.34   | 3.65 | 3.09 | 3.37   | 54.6 | 42.9 | 48.8 |
| 41      | E. FLOCKTONIAE 6464       | GL           | 64    | ---    | 2.08  | 0.93  | 1.51     | 2.6  | 1.2 | 1.9  | 0.00 | 0.00  | 0.00   | 1.18 | 0.62 | 1.00   | 11.1 | 7.1  | 9.1  |
| 42      | E. RUBIDA 12089           | GL           | 93    | ---    | 8.92  | 7.31  | 8.12     | 10.0 | 8.2 | 9.1  | 0.53 | 0.10  | 0.32   | 2.39 | 2.00 | 2.20   | 35.9 | 29.6 | 32.9 |
| 43      | E. FRAGILOCOSA 7251       | GL           | 90    | Y      | 4.98  | 3.88  | 4.43     | 6.7  | 5.1 | 5.9  | 0.00 | 0.00  | 0.00   | 2.50 | 1.97 | 2.24   | 26.6 | 21.1 | 24.0 |
| 44      | E. MOLLUCANA 10154        | GL           | 91    | ---    | 3.92  | 2.96  | 3.44     | 5.1  | 4.0 | 4.5  | 0.00 | 0.00  | 0.00   | 2.40 | 1.90 | 2.15   | 23.5 | 18.7 | 21.1 |
| 45      | E. PANICULATA 11741       | GL           | 97    | Y      | 5.18  | 4.16  | 4.67     | 6.1  | 4.9 | 5.5  | 0.55 | 0.33  | 0.64   | 2.36 | 1.68 | 2.12   | 30.7 | 23.7 | 27.2 |
| 46      | E. PLATYPUS 6004          | GL           | 89    | ---    | 1.71  | 0.87  | 1.29     | 2.2  | 1.0 | 1.6  | 0.00 | 0.00  | 0.00   | 1.58 | 0.99 | 1.27   | 13.1 | 7.7  | 10.4 |
| 47      | E. OCCIDENTALIS 6459/6542 | GL           | 94    | ---    | 7.21  | 6.10  | 6.65     | 7.6  | 6.2 | 6.9  | 0.00 | 0.00  | 0.00   | 1.80 | 1.35 | 1.57   | 25.9 | 21.0 | 23.4 |
| 48      | E. GOMPHOCEPHALA 6090     | GL           | 92    | ---    | 8.23  | 6.57  | 7.40     | 10.0 | 7.6 | 8.8  | 0.00 | 0.00  | 0.00   | 2.58 | 2.06 | 2.32   | 35.7 | 25.5 | 30.6 |
| 49      | E. MEGACARPA 6431         | GL           | 35    | ---    | 3.84  | 1.06  | 2.44     | 6.7  | 2.1 | 4.4  | 0.00 | 0.00  | 0.00   | 2.35 | 1.20 | 1.78   | 23.8 | 10.7 | 17.2 |

|     |                          |    |     |     |      |      |      |      |     |      |           |      |      |      |      |      |      |      |      |
|-----|--------------------------|----|-----|-----|------|------|------|------|-----|------|-----------|------|------|------|------|------|------|------|------|
| 51  | E. LAELIAE 6230          | GL | 62  | --- | 3.99 | 1.41 | 2.70 | 7.5  | 2.6 | 5.1  | 0.00      | 0.00 | 0.00 | 2.67 | 1.33 | 2.00 | 27.6 | 11.6 | 19.6 |
| 52  | E. PATENS 6138           | GL | 78  | --- | 6.48 | 4.11 | 5.29 | 11.7 | 7.5 | 9.6  | 0.18-0.06 | 0.06 | 3.12 | 2.28 | 2.70 | 38.6 | 24.0 | 31.3 |      |
| 53  | E. CALOPHYLLA 6336       | GL | 74  | --- | 3.14 | 1.23 | 2.18 | 5.6  | 2.6 | 4.1  | 0.36-0.05 | 0.15 | 2.36 | 1.33 | 1.85 | 24.9 | 11.2 | 18.1 |      |
| 54  | E. CALOPHYLLA 6391       | GL | 81  | --- | 2.61 | 1.42 | 2.02 | 4.9  | 2.7 | 3.8  | 0.16-0.05 | 0.05 | 2.32 | 1.57 | 1.95 | 22.9 | 12.4 | 17.7 |      |
| 55  | E. MARGINATA 6471        | GL | 41  | --- | 5.30 | 2.50 | 3.90 | 9.9  | 4.7 | 7.3  | 0.56-0.06 | 0.25 | 3.50 | 2.00 | 2.75 | 44.6 | 13.7 | 29.1 |      |
| 56  | E. MARGINATA 6229        | GL | 84  | --- | 1.29 | 0.43 | 0.66 | 2.6  | 1.0 | 1.8  | 0.36-0.06 | 0.15 | 2.06 | 1.34 | 1.70 | 17.5 | 9.7  | 13.6 |      |
| 57  | E. KONDININENSIS 6203    | GL | 75  | --- | 4.37 | 3.21 | 3.79 | 5.8  | 4.2 | 5.0  | 0.00      | 0.00 | 0.00 | 2.09 | 1.61 | 1.85 | 23.2 | 16.8 | 20.0 |
| 58  | E. PALDATA 6525/6438     | GL | 77  | Y   | 8.21 | 6.72 | 7.46 | 8.8  | 6.6 | 7.8  | 0.00      | 0.00 | 0.00 | 2.74 | 2.12 | 2.43 | 36.1 | 25.0 | 30.5 |
| 59  | E. RUDIS 6295            | GL | 89  | --- | 4.84 | 3.63 | 4.23 | 7.4  | 5.4 | 6.4  | 0.00      | 0.00 | 0.00 | 2.26 | 1.69 | 1.97 | 26.7 | 16.3 | 22.5 |
| 60  | E. WANDOO 6218           | GL | 73  | --- | 3.60 | 1.42 | 2.51 | 6.6  | 2.7 | 4.6  | 0.71-0.11 | 0.30 | 2.13 | 1.07 | 1.60 | 26.7 | 10.3 | 16.5 |      |
| 61  | E. ACCEDENS 6215         | GL | 80  | --- | 4.49 | 3.05 | 3.77 | 7.1  | 4.7 | 5.9  | 0.26-0.04 | 0.11 | 2.23 | 1.66 | 1.94 | 25.6 | 18.4 | 22.0 |      |
| 62  | E. SARGENTII 6467        | GL | 93  | --- | 3.33 | 2.32 | 2.83 | 4.3  | 3.0 | 3.7  | 0.00      | 0.00 | 0.00 | 1.10 | 0.79 | 0.94 | 14.3 | 9.7  | 12.0 |
| 63  | E. SPATHULATA 6221       | GL | 76  | --- | 4.45 | 2.85 | 3.65 | 6.2  | 3.9 | 5.0  | 0.17-0.06 | 0.06 | 2.44 | 1.56 | 2.00 | 27.9 | 14.1 | 21.0 |      |
| 64  | E. CONFERMINATA 6367     | GL | 46  | --- | 1.50 | 0.23 | 0.87 | 2.2  | 0.7 | 1.5  | 0.00      | 0.00 | 0.00 | 1.95 | 0.71 | 1.33 | 14.8 | 5.4  | 10.1 |
| 65  | E. SALMONOPHLOIA 6460    | GL | 76  | --- | 1.94 | 1.27 | 1.61 | 3.0  | 1.9 | 2.5  | 0.00      | 0.00 | 0.00 | 1.75 | 1.20 | 1.47 | 15.9 | 9.7  | 12.8 |
| 66  | E. ASTRINGENS 6259/4716  | GL | 94  | --- | 8.44 | 6.36 | 7.40 | 8.5  | 6.1 | 7.3  | 0.33-0.06 | 0.14 | 3.17 | 2.37 | 2.77 | 37.6 | 28.4 | 33.0 |      |
| 67  | E. BARDNERI 6228         | GL | 100 | --- | 6.37 | 4.93 | 5.65 | 7.6  | 5.6 | 6.6  | 0.00      | 0.00 | 0.00 | 2.95 | 2.19 | 2.57 | 38.9 | 17.6 | 28.2 |
| 68  | E. DIVES 6417            | GL | 36  | --- | 4.54 | 2.01 | 3.28 | 6.6  | 3.3 | 4.9  | 0.00      | 0.00 | 0.00 | 2.61 | 1.39 | 2.00 | 28.3 | 11.9 | 20.1 |
| 69  | E. ARDOPHLOIA 12641      | GL | 95  | --- | 7.20 | 4.97 | 6.06 | 11.8 | 7.4 | 9.6  | 0.16-0.05 | 0.06 | 2.96 | 2.16 | 2.56 | 39.5 | 23.6 | 31.6 |      |
| 70  | E. ARDOPHLOIA 11311      | GL | 91  | --- | 6.97 | 4.77 | 5.87 | 10.9 | 6.8 | 8.9  | 0.71-0.01 | 0.35 | 2.89 | 2.11 | 2.50 | 40.2 | 23.9 | 32.1 |      |
| 71  | E. BRIFFITHSII 6466      | GL | 79  | --- | 2.51 | 1.57 | 2.04 | 2.9  | 1.8 | 2.3  | 0.00      | 0.00 | 0.00 | 2.00 | 1.37 | 1.65 | 18.7 | 10.4 | 14.6 |
| 72  | E. LONGICORNIS 6463      | GL | 67  | Y   | 1.75 | 0.55 | 1.15 | 3.1  | 1.0 | 2.0  | 0.00      | 0.00 | 0.00 | 2.09 | 1.14 | 1.62 | 17.0 | 8.5  | 12.8 |
| 73  | E. DLEOSA 6462           | GL | 90  | Y   | 2.69 | 1.89 | 2.29 | 3.6  | 2.5 | 3.0  | 0.00      | 0.00 | 0.00 | 2.21 | 1.67 | 1.94 | 20.1 | 13.9 | 17.0 |
| 74  | E. SALUBRIS 6461         | GL | 53  | --- | 2.73 | 1.02 | 1.68 | 3.1  | 1.2 | 2.1  | 0.00      | 0.00 | 0.00 | 2.13 | 0.88 | 1.50 | 19.6 | 6.6  | 13.1 |
| 75  | E. DIVES 10064           | GL | 41  | --- | 5.32 | 0.86 | 3.09 | 5.9  | 1.5 | 3.7  | 0.00      | 0.00 | 0.00 | 2.66 | 1.03 | 1.86 | 30.2 | 5.5  | 17.9 |
| 76  | E. GONIOCALYX 12098      | GL | 93  | --- | 6.92 | 4.59 | 5.76 | 10.2 | 6.3 | 8.3  | 0.16-0.05 | 0.06 | 2.43 | 1.68 | 2.06 | 32.0 | 21.6 | 26.8 |      |
| 77  | E. GONIOCALYX 12637      | GL | 81  | --- | 6.22 | 5.19 | 6.70 | 10.6 | 6.6 | 8.6  | 0.41-0.03 | 0.19 | 2.30 | 1.70 | 2.00 | 35.1 | 22.4 | 26.7 |      |
| 78  | E. MANNIFERA 12159       | GL | 85  | Y   | 6.84 | 3.67 | 5.26 | 9.8  | 5.0 | 7.4  | 0.00      | 0.00 | 0.00 | 2.42 | 1.58 | 2.00 | 31.1 | 18.5 | 24.8 |
| 79  | E. HUBERANA 7248         | GL | 93  | --- | 7.56 | 5.19 | 6.38 | 9.0  | 5.7 | 7.4  | 0.31-0.10 | 0.11 | 2.25 | 1.54 | 1.89 | 31.9 | 20.3 | 26.1 |      |
| 80  | E. CLADOCALYX 11834      | GL | 49  | --- | 7.13 | 2.72 | 4.93 | 11.9 | 4.3 | 8.1  | 0.93-0.01 | 0.46 | 3.35 | 1.73 | 2.54 | 43.4 | 18.8 | 31.1 |      |
| 81  | E. CLADOCALYX 6470       | GL | 51  | --- | 6.07 | 5.43 | 6.75 | 10.8 | 7.1 | 9.0  | 1.83      | 0.84 | 1.33 | 3.16 | 2.26 | 2.72 | 49.8 | 31.6 | 40.8 |
| 82  | E. LARGIFLORENS 10676    | GL | 93  | --- | 4.26 | 2.81 | 3.53 | 5.0  | 3.2 | 4.1  | 0.00      | 0.00 | 0.00 | 2.19 | 1.70 | 1.94 | 24.4 | 14.3 | 19.4 |
| 83  | E. LARGIFLORENS 11912    | GL | 73  | --- | 3.44 | 1.58 | 2.51 | 4.1  | 1.9 | 3.0  | 0.00      | 0.00 | 0.00 | 1.77 | 1.17 | 1.47 | 16.3 | 10.3 | 14.3 |
| 84  | E. CAMALDULENSIS 11340   | GL | 79  | --- | 6.79 | 3.70 | 5.24 | 9.1  | 5.0 | 7.0  | 0.56-0.03 | 0.27 | 2.73 | 1.80 | 2.27 | 38.0 | 17.5 | 27.7 |      |
| 85  | E. WANDOO 4886           | GL | 98  | Y   | 3.70 | 1.60 | 2.65 | 6.2  | 2.5 | 4.3  | 0.48      | 0.09 | 0.29 | 2.36 | 1.54 | 1.95 | 26.9 | 13.9 | 20.4 |
| 86  | E. LIXOPHLEBA 6150       | GL | 89  | --- | 5.58 | 4.03 | 4.81 | 6.2  | 4.1 | 5.2  | 0.43-0.03 | 0.20 | 1.95 | 1.35 | 1.65 | 26.8 | 15.9 | 21.4 |      |
| 87  | E. CAMALDULENSIS 10089   | GL | 85  | --- | 6.66 | 4.68 | 5.67 | 9.0  | 6.2 | 7.6  | 0.35-0.02 | 0.17 | 2.29 | 1.82 | 2.06 | 30.9 | 22.8 | 26.9 |      |
| 88  | E. SALIGNA 6234          | GL | 77  | --- | 9.18 | 6.24 | 7.71 | 13.5 | 8.6 | 11.1 | 2.43      | 1.50 | 1.97 | 2.86 | 2.07 | 2.47 | 54.7 | 37.4 | 46.0 |
| 89  | E. CAMALDULENSIS 11910   | GL | 78  | --- | 4.74 | 3.53 | 4.13 | 5.1  | 3.6 | 4.4  | 0.48      | 0.07 | 0.27 | 2.12 | 1.78 | 1.95 | 24.9 | 19.5 | 22.2 |
| 90  | P. PINASTER 5083         | GL | 89  | --- | 6.26 | 5.15 | 5.71 | 9.9  | 7.9 | 8.9  | 2.13      | 1.58 | 1.85 | 2.50 | 2.08 | 2.29 | 43.4 | 36.5 | 40.0 |
| 91  | P. RADIATA 5086/7        | GL | 85  | --- | 7.38 | 6.33 | 6.85 | 11.2 | 9.3 | 10.3 | 2.90      | 2.30 | 2.60 | 2.39 | 2.01 | 2.20 | 50.1 | 43.0 | 46.5 |
| 92  | E. INTERTEXTA 11302      | GL | 93  | --- | 2.66 | 1.72 | 2.19 | 4.3  | 2.9 | 3.6  | 0.00      | 0.00 | 0.00 | 2.54 | 1.79 | 2.17 | 22.7 | 14.9 | 18.6 |
| 93  | E. DREPANOPHYLLA 11412   | GL | 87  | --- | 3.56 | 2.76 | 3.16 | 4.2  | 2.9 | 3.5  | 0.42      | 0.13 | 0.27 | 2.06 | 1.69 | 1.88 | 22.4 | 17.3 | 19.8 |
| 94  | E. DECORTICANS 10148     | GL | 82  | --- | 4.24 | 3.06 | 3.65 | 5.4  | 3.9 | 4.7  | 0.99      | 0.47 | 0.73 | 2.09 | 1.74 | 1.92 | 28.1 | 21.0 | 24.5 |
| 95  | E. RESINIFERA 10431      | GL | 92  | Y   | 6.23 | 4.44 | 5.34 | 9.3  | 6.1 | 7.7  | 1.38      | 0.62 | 1.00 | 2.59 | 1.96 | 2.27 | 36.8 | 27.4 | 33.1 |
| 96  | E. RESINIFERA 10962      | GL | 85  | Y   | 3.91 | 2.84 | 3.38 | 5.0  | 3.1 | 4.0  | 0.50      | 0.12 | 0.31 | 1.68 | 1.45 | 1.67 | 22.7 | 16.2 | 19.4 |
| 97  | E. CYPELLODC. 12390/9440 | GL | 72  | --- | 4.30 | 2.90 | 3.60 | 5.9  | 3.6 | 4.7  | 1.16      | 0.09 | 0.63 | 2.72 | 1.90 | 2.31 | 32.6 | 19.9 | 26.3 |
| 98  | E. CYPELLODC. 12390/9440 | GL | 56  | --- | 3.03 | 1.94 | 2.48 | 3.2  | 1.7 | 2.5  | 0.80      | 0.07 | 0.43 | 2.76 | 2.11 | 2.43 | 27.3 | 18.0 | 22.7 |
| 99  | E. PILULARIS 12136/12158 | GL | 90  | --- | 5.16 | 3.31 | 4.24 | 6.7  | 4.1 | 5.4  | 1.35      | 0.45 | 0.90 | 2.67 | 1.93 | 2.30 | 35.6 | 22.7 | 29.1 |
| 100 | E. PILULARIS 12136/12158 | GL | 93  | --- | 6.00 | 3.94 | 4.97 | 7.4  | 4.8 | 6.1  | 1.01      | 0.22 | 0.61 | 2.99 | 2.13 | 2.56 | 38.4 | 23.0 | 30.7 |
| 101 | E. ALBENS 8827           | GL | 90  | --- | 3.09 | 2.04 | 2.56 | 5.3  | 3.6 | 4.4  | 0.19-0.01 | 0.09 | 2.14 | 1.68 | 1.91 | 22.0 | 15.0 | 19.0 |      |
| 102 | E. ALBENS 10457          | GL | 89  | --- | 3.89 | 2.42 | 3.15 | 5.4  | 3.5 | 4.5  | 0.22-0.03 | 0.10 | 2.58 | 1.90 | 2.24 | 26.5 | 17.0 | 21.8 |      |
| 103 | E. ALBENS 12632          | GL | 87  | --- | 3.68 | 2.55 | 3.12 | 5.2  | 3.7 | 4.5  | 0.17-0.01 | 0.08 | 2.13 | 1.66 | 1.89 | 22.1 | 16.6 | 19.4 |      |
| 104 | E. MELANOPHLOIA 6959     | GL | 87  | --- | 3.70 | 2.40 | 3.05 | 5.7  | 3.8 | 4.8  | 1.01      | 0.05 | 0.53 | 2.20 | 1.69 | 1.94 | 28.3 | 17.1 | 22.7 |
| 105 | E. MELANOPHLOIA 6520     | GL | 87  | --- | 3.87 | 2.68 | 3.28 | 6.3  | 4.6 | 5.4  | 0.31-0.01 | 0.15 | 2.21 | 1.69 | 1.95 | 25.6 | 17.0 | 21.5 |      |
| 106 | E. MELANOPHLOIA 10763    | GL | 92  | --- | 4.33 | 3.28 | 3.81 | 6.2  | 4.6 | 5.4  | 0.58      | 0.05 | 0.32 | 2.21 | 1.75 | 2.00 | 28.4 | 17.9 | 23.2 |
| 107 | E. CITRIODORA 12012      | GL | 27  | --- | 8.45 | 2.45 | 5.44 | 9.8  | 2.8 | 6.3  | 1.35-0.15 | 0.60 | 2.98 | 1.02 | 2.00 | 46.7 | 9.3  | 28.0 |      |
| 108 | E. DICHROPHLOIA 11731    | GL | 73  | --- | 0.87 | 0.36 | 0.62 | 0.9  | 0.5 | 0.7  | 0.00      | 0.00 | 0.00 | 1.15 | 0.93 | 1.04 | 6.9  | 6.0  | 7.4  |
| 109 | E. DICHROPHLOIA 8584     | GL | 81  | --- | 1.74 | 0.96 | 1.36 | 2.9  | 1.5 | 2.2  | 0.00      | 0.00 | 0.00 | 1.63 | 1.10 | 1.37 | 14.7 | 8.7  | 11.7 |
| 110 | E. MACULATA 11965        | GL | 67  | --- | 5.84 | 2.99 | 4.41 | 6.4  | 3.7 | 6.1  | 0.93      | 0.30 | 0.62 | 2.65 | 1.84 | 2.35 | 36.7 | 20.3 | 28.5 |
| 111 | E. CITRIODORA 10767      | GL | 91  | --- | 4.70 | 2.76 | 3.73 | 6.2  | 3.4 | 4.8  | 0.51      | 0.12 | 0.31 | 1.76 | 1.38 | 1.57 | 24.1 | 15.8 | 19.9 |

|     |                           |    |    |     |       |      |       |      |      |      |      |       |      |      |      |      |      |      |      |
|-----|---------------------------|----|----|-----|-------|------|-------|------|------|------|------|-------|------|------|------|------|------|------|------|
| 110 | E. MACULATA 4817          | GL | 67 | --- | 6.69  | 2.46 | 4.57  | 9.5  | 3.2  | 6.3  | 1.34 | 0.29  | 0.82 | 3.32 | 1.59 | 2.45 | 44.2 | 16.0 | 31.1 |
| 112 | E. MACULATA 9448          | GL | 78 | --- | 6.16  | 3.86 | 5.03  | 8.3  | 5.1  | 6.7  | 1.75 | 0.56  | 1.15 | 2.60 | 1.71 | 2.15 | 42.2 | 21.9 | 32.1 |
| 113 | E. RESINIFERA 11963       | GL | 95 | Y   | 7.07  | 5.63 | 6.35  | 10.7 | 8.0  | 9.3  | 2.17 | 1.47  | 1.82 | 2.92 | 2.21 | 2.56 | 48.2 | 37.2 | 42.7 |
| 114 | E. MACULATA 11181         | GL | 55 | --- | 8.06  | 5.34 | 6.71  | 10.7 | 6.6  | 8.7  | 1.28 | 0.62  | 0.95 | 2.94 | 2.02 | 2.48 | 44.0 | 29.0 | 36.5 |
| 115 | E. PANICULATA 11600       | GL | 77 | --- | 5.12  | 3.55 | 4.48  | 7.7  | 5.5  | 6.6  | 0.62 | 0.19  | 0.41 | 2.45 | 1.98 | 2.22 | 31.4 | 22.8 | 27.1 |
| 116 | E. BUTRYOIDES 12104       | GL | 71 | --- | 9.92  | 7.17 | 8.54  | 12.6 | 8.7  | 10.7 | 2.56 | 1.71  | 2.14 | 2.98 | 2.13 | 2.55 | 56.1 | 40.8 | 48.4 |
| 117 | E. BUTRYOIDES 12134       | GL | 98 | --- | 10.52 | 8.24 | 9.38  | 11.7 | 8.8  | 10.3 | 2.16 | 1.49  | 1.84 | 2.73 | 2.25 | 2.49 | 51.9 | 41.7 | 46.6 |
| 118 | E. MACULATA 10728         | GL | 63 | --- | 5.17  | 2.98 | 4.07  | 7.2  | 3.8  | 5.5  | 0.66 | 0.21  | 0.53 | 2.43 | 1.77 | 2.10 | 31.9 | 19.4 | 25.7 |
| 119 | E. ROBUSTA 10063          | GL | 57 | Y   | 6.17  | 4.00 | 5.08  | 9.5  | 5.7  | 7.6  | 1.06 | 0.25  | 0.65 | 2.67 | 1.99 | 2.43 | 38.5 | 24.4 | 31.4 |
| 120 | E. ROBUSTA 10176          | GL | 72 | --- | 7.41  | 4.39 | 5.90  | 11.5 | 6.1  | 8.8  | 1.34 | 0.51  | 0.92 | 2.91 | 2.09 | 2.50 | 44.2 | 27.0 | 35.6 |
| 121 | E. BUTRYOIDES 7503        | GL | 70 | --- | 11.66 | 8.79 | 10.22 | 16.1 | 11.3 | 13.7 | 2.15 | 1.31  | 1.73 | 3.48 | 2.67 | 3.08 | 61.2 | 46.3 | 53.6 |
| 122 | E. CAMALDULENSIS 11910    | GL | 88 | Y   | 7.26  | 4.98 | 6.13  | 9.1  | 5.7  | 7.4  | 0.94 | 0.26  | 0.60 | 2.01 | 1.53 | 1.77 | 33.3 | 22.9 | 26.1 |
| 123 | E. WANDOO 6218            | GL | 75 | Y   | 4.08  | 2.32 | 3.20  | 5.7  | 3.1  | 4.4  | 0.00 | 0.00  | 0.00 | 2.12 | 1.47 | 1.79 | 23.1 | 13.8 | 18.4 |
| 124 | E. RESINIFERA 6011        | GL | 70 | Y   | 6.25  | 4.21 | 5.23  | 9.0  | 5.5  | 7.2  | 1.69 | 0.76  | 1.23 | 2.63 | 1.91 | 2.27 | 41.1 | 26.9 | 34.0 |
| 125 | E. INTERTEXTA 12470       | GL | 73 | --- | 4.74  | 0.07 | 2.41  | 3.3  | 1.2  | 2.3  | 0.29 | -0.02 | 0.13 | 1.76 | 1.17 | 1.47 | 19.8 | 8.9  | 14.3 |
| 126 | E. INTERTEXTA 11630       | GL | 87 | --- | 1.89  | 1.08 | 1.48  | 2.5  | 1.1  | 1.8  | 0.00 | 0.00  | 0.00 | 2.24 | 1.65 | 1.95 | 17.7 | 12.3 | 15.0 |
| 127 | E. GLOBULUS 6291          | GL | 53 | Y   | 8.39  | 3.22 | 5.61  | 10.6 | 2.7  | 6.7  | 2.22 | 0.71  | 1.47 | 2.82 | 1.45 | 2.13 | 49.2 | 20.4 | 34.8 |
| 128 | E. GOMPHOCEPHALA 6090     | GL | 73 | --- | 8.74  | 7.04 | 7.89  | 13.1 | 10.1 | 11.6 | 0.63 | 0.13  | 0.38 | 2.72 | 2.04 | 2.38 | 41.8 | 30.6 | 36.2 |
| 129 | E. MICROTHECA 12538       | GL | 92 | --- | 1.50  | 0.80 | 1.15  | 1.5  | 0.7  | 1.1  | 0.07 | -0.02 | 0.02 | 1.49 | 1.11 | 1.30 | 12.1 | 8.2  | 10.1 |
| 130 | E. MICROTHECA 12497       | GL | 99 | --- | 2.03  | 1.49 | 1.76  | 2.7  | 1.9  | 2.3  | 0.00 | 0.00  | 0.00 | 1.87 | 1.51 | 1.69 | 15.8 | 12.5 | 14.2 |
| 131 | E. MICROTHECA 12811       | GL | 99 | --- | 2.03  | 1.48 | 1.76  | 3.9  | 3.0  | 3.4  | 0.00 | 0.00  | 0.00 | 1.91 | 1.41 | 1.66 | 16.9 | 12.8 | 14.5 |
| 132 | E. TRANSCONTIN. 6465/6128 | GL | 90 | --- | 1.68  | 1.20 | 1.44  | 1.0  | 0.5  | 0.8  | 0.18 | -0.03 | 0.07 | 1.26 | 0.89 | 1.07 | 10.7 | 7.7  | 9.2  |
| 133 | E. CAMALDULENSIS 8966     | GL | 88 | --- | 5.03  | 3.48 | 4.25  | 7.1  | 4.5  | 5.8  | 0.24 | 0.01  | 0.13 | 2.03 | 1.59 | 1.81 | 25.0 | 16.5 | 21.8 |
| 134 | E. CITRIGDORA 6240        | GL | 65 | --- | 5.60  | 3.96 | 4.79  | 6.0  | 3.9  | 5.0  | 0.16 | -0.03 | 0.07 | 1.66 | 1.25 | 1.55 | 23.7 | 15.8 | 19.7 |
| 135 | E. INTERTEXTA 11736       | GL | 88 | --- | 2.46  | 1.23 | 1.84  | 3.4  | 1.8  | 2.6  | 0.16 | -0.01 | 0.08 | 1.81 | 1.37 | 1.59 | 17.3 | 11.5 | 14.4 |